



CLINICIAN UPDATE, August 9, 2005

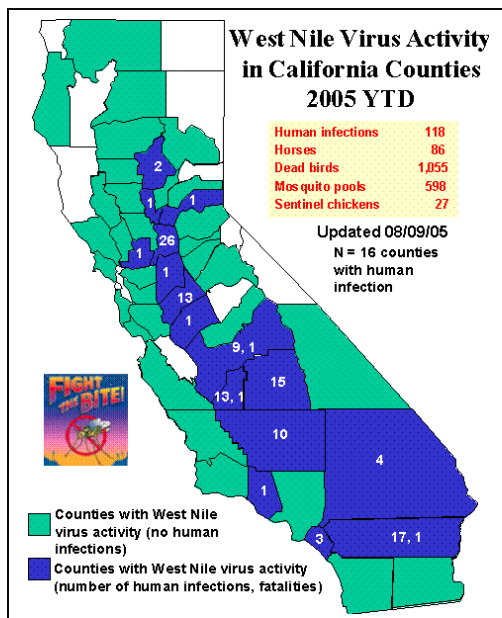
THE WEST NILE FILE



Orange County Health Care Agency, Epidemiology & Assessment, 1719 W. 17th St. Santa Ana, CA 92706, (714) 834-8180

The first three human cases of West Nile Virus (WNV) infection in Orange County during 2005 have been confirmed. Consider WNV infection in your patients with aseptic meningitis, encephalitis, acute flaccid paralysis or prolonged fever (≥ 7 days) and send serology (IgM, IgG) for WNV.

- **Weakness** may be a prominent finding in patients with WNV infection, including West Nile Fever (WNF). Evaluate motor strength and reflexes in all patients with possible WNV infection and monitor hospitalized WNV patients for respiratory weakness and need for respiratory support.
- **WNV-associated acute flaccid paralysis (AFP)** can occur alone or with WNF, meningitis or encephalitis. It most commonly presents as a poliomyelitis-like or atypical Guillain Barré syndrome. The weakness can take on many patterns including acute monoplegia (weakness or paralysis of one limb), asymmetric upper or lower extremity weakness, and generalized asymmetric quadriplegia. Deep tendon reflexes in affected limbs are usually diminished or absent. For more information on WNV-associated AFP, see Sejvar et al. *Emerg Infect Dis* 2005;11:1021-1027, available at <http://www.cdc.gov/eid>.



West Nile Virus — Orange County 2005

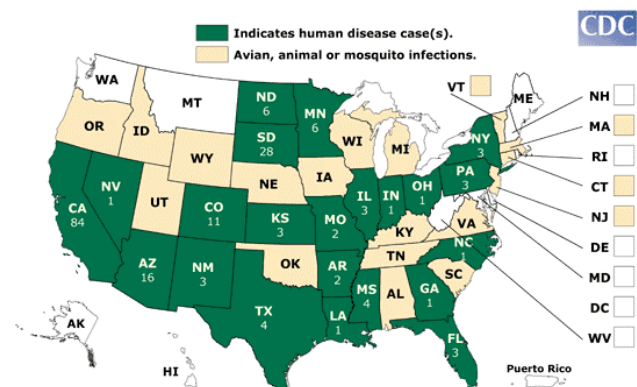
- Two more residents of Orange County (Anaheim and Brea) have been confirmed with WNV infection this year. It is unclear exactly where they were exposed to the virus, as both had traveled to other parts of CA where WNV has been detected.
- **WNV infection [including WNF, West Nile Neuroinvasive Disease (WNND), and asymptomatic blood donation]** is a reportable disease and should be reported to OC Epidemiology by phone 714-834-8180 or fax 714-834-8196 within one working day. Aseptic meningitis and encephalitis of any etiology are also reportable diseases and should be reported within the same timeframe.

Recommended Resources

OC Public Health: www.ochealthinfo.com/epi/wnv
 OC Vector Control: www.ocvcd.org or 714-971-2421
 California: www.westnile.ca.gov or 1-877-WNV-BIRD
 USA: www.cdc.gov/ncidod/dvbid/westnile

West Nile Virus — California and US 2005

- As of August 9, 2005, 118 human WNV infections have been reported in California. Of the 102 symptomatic cases, 34 (33%) had WNND and 55 (54%) had WNF, and 13 (13%) were unspecified. The median age for all symptomatic cases where data is available is 50 years (range, 18-85 years). Sixty-three (62%) of the cases are male.
- There have been three WNV-related fatalities this year in California (Fresno, Kings, and Riverside Counties).
- 187 human WNV cases from 22 states had been reported to the CDC as of August 9, 2005.



2005 West Nile Virus Activity in the US (Reported to CDC as of August 9, 2005)

If you have any comments about the flyer, contact Kirsten Melbye or Sandra Nutter at (714) 834-8180. To receive this newsletter by email, please contact us at epi@ochca.com.