



CD Connection

Orange County Communicable Disease News

Health Care Agency/Public Health Services - Epidemiology

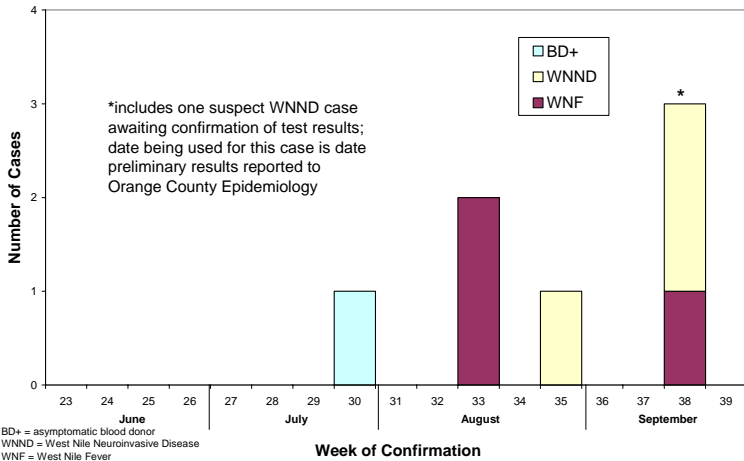
September 21, 2007

1719 W. 17th St. Santa Ana, CA 92706, (714) 834-8180

WEST NILE VIRUS (WNV) UPDATE

West Nile Virus activity continues in Orange County, with recent human cases and positive testing in birds and mosquitoes. Consider WNV infection in your patients with aseptic meningitis, encephalitis, or prolonged fever and submit serum for WNV IgM and IgG testing.

Orange County 2007 West Nile Virus Infections by Week of Confirmation as of September 21, 2007

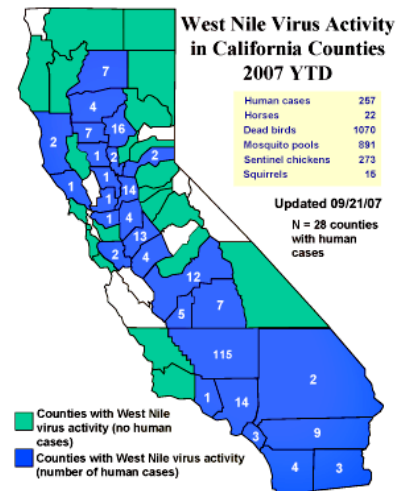


Who should get tested for WNV infection?

- WNV testing is recommended for the following individuals:
 - All patients with encephalitis
 - All patients with aseptic meningitis (consider enterovirus first in children)
 - All patients with acute flaccid paralysis
 - Patients with prolonged febrile illness (≥ 7 days) and symptoms compatible with West Nile infection.
- For more information about WNV testing, see the *CD Connection* issue from June 2007, available at www.ochealthinfo.com/epi/for-phys.htm - [Physicians](#).
- For clinical information, see www.westnile.ca.gov/resources.php under Clinician Information.

West Nile Virus -- Orange County and California

- Six confirmed WNV infections (2 WNNND, 3 WNF, 1 asymptomatic blood donor) have been reported in Orange County in 2007.
- 257 human WNV cases and 14 WNV-related fatalities have been reported in CA to date in 2007. WNV activity has been reported in 50 of 58 CA counties.
- To report dead birds or squirrels, call Orange County Vector Control at 714-971-2421 x117.



RECOMMENDED RESOURCES

Orange County Health Care Agency:

www.ochealthinfo.com/epi/wnv

Orange County Vector Control District:

www.ocvcd.org or Ph: 714-971-2421

California Department of Public Health:

www.westnile.ca.gov

Centers for Disease Control and Prevention:

www.cdc.gov/ncidod/dvbid/westnile

Public Health Preparedness News...

- Health & Emergency Preparedness Planning Council (HEPPC): next meeting 10/9/07 at Soka University
 - Special Populations Forum: 10/15/07 at the City of Costa Mesa Neighborhood Community Center.
- Email events@ochca.com or call 714-834-3105 for more information on either of these events.

For comments or suggestions on the newsletter, contact Dr. Michele Cheung at (714) 834-8180. To receive this newsletter by email, please contact us at epi@ochca.com.