

March 20, 2009

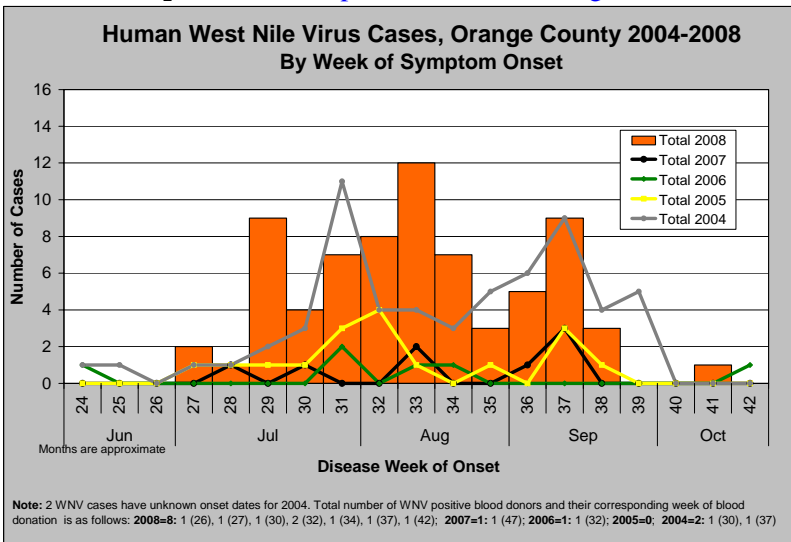
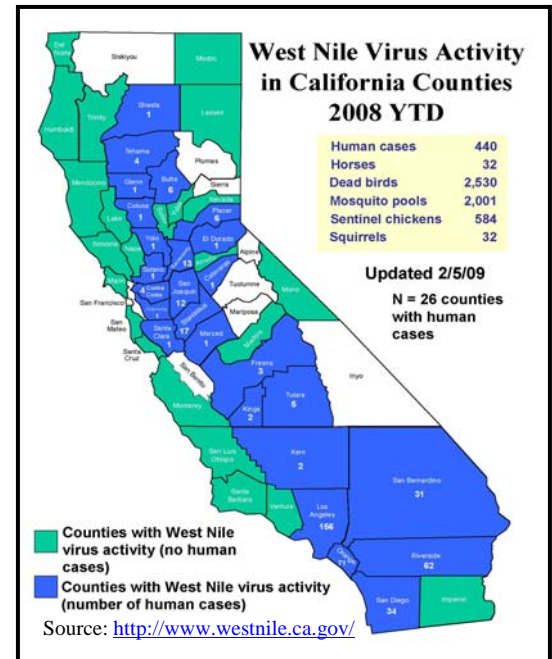
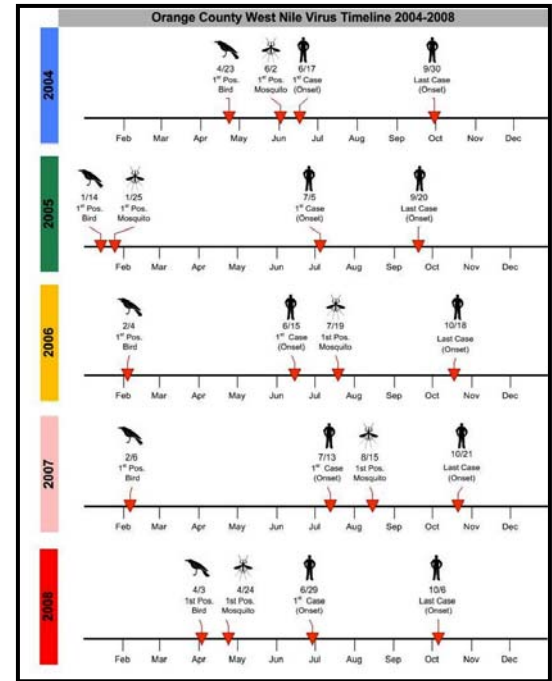
1719 W. 17<sup>th</sup> St. Santa Ana, CA 92706, (714) 834-8180

## Summary Report for the 2008 West Nile Virus (WNV) Season

If additional cases are reported from 2008, a revised summary will be posted on our website:

<http://www.ochcahealthinfo.com/epi/for-phys.htm#Physicians>.

- 2008 infections:** As of March 20, 2009, 79 WNV infections (71 symptomatic cases and 8 asymptomatic blood donors) have been reported in Orange County residents for the 2008 WNV season. Of the 71 symptomatic cases, 17 (24%) were West Nile fever (WNF), and 54 (76%) were West Nile neuroinvasive disease (WNND). There were three (4%) deaths. Among the WNND cases, 25 (46%) were WNND encephalitis, 24 (44%) were WNND meningitis, and 5 (9%) were WNND acute flaccid paralysis. In comparison, there were a total of 10 WNV infections reported in 2007, seven in 2006, 17 in 2005, and 64 in 2004.<sup>1</sup>
- Seasonality:** In the past five seasons, human WNV cases have occurred in Orange County from June through October. However, positive birds and/or mosquitoes have been detected throughout the year. WNV is endemic in Orange County and human cases are to be expected each year.
- Age for symptomatic cases, 2008:** The median age for all symptomatic cases reported in 2008 was 53 years (range 4-90 years). The median age of WNF and WNND cases was 56 years (range 27-80 years) and 53 years (range 4-90 years) respectively. The median age for WNND encephalitis cases was 62 years (range 4-86 years), WNND meningitis cases was 50 years (range 21-90 years), and WNND acute flaccid paralysis cases was 64 years (range 38-74 years).
- Gender, race, and ethnicity for symptomatic cases, 2008:** Males accounted for the majority of WNV cases in 2008 (47, 66.2%). Race and ethnicity information was known for 57 (80%) cases, of which 35 (61%) were Non-Hispanic White, 16 (28%) were Hispanic White, 3 (5%) were Non-Hispanic Other, 2 (4%) were Non-Hispanic Black, and 1 (2%) was Hispanic Other.
- For CDC updates:** See [www.cdc.gov/ncidod/dvbid/westnile/](http://www.cdc.gov/ncidod/dvbid/westnile/).
- For State updates:** See <http://www.westnile.ca.gov/>.



<sup>1</sup> West Nile Virus-positive blood donors were not included in official California statistics until 2006.

If you have any comments about the flyer, contact Suvas Patel, MPH or Dr. Michele Cheung at (714) 834-8180. To receive this newsletter by email, please contact us at [epi@ochca.com](mailto:epi@ochca.com).