

TheNavigator

A GUIDE TO BEHAVIORAL HEALTH SERVICES



Adult & Older Adult Behavioral Health

Welcome to The Navigator

This publication will showcase the Adult and Older Adult Behavioral Health (AOABH) division. The AOABH division has six primary departments:

- Crisis Services
- Collaborative Services
- Clinic Operations
- Inpatient Services
- Central Services
- Residential Services



Who we serve

Adults who have a serious and persistent mental illness, either with or without a co-occurring substance use disorder that impairs their ability to function in the community. Their history of functional impairments, hospitalization, or symptoms have reduced their ability to succeed in the community or access services in the past.

AOABH is a County division that provides recovery behavioral health services; to adult and older adults with serious emotional or mental health problems. The service offerings include assessment, evaluation, case management, individual and group therapy, substance use disorder treatment, medication support, rehabilitation, linkage, placement, crisis intervention, and specialized residential services.

Crisis Services

Centralized Assessment Team

The County AOABH system offers a variety of crisis services to assist Adults and their families during challenging times.



AOABH – Centralized Assessment Team (CAT) Team

The AOABH-CAT team is a mobile crisis response team, providing crisis intervention and evaluation for involuntary hospitalization (5150) on a 24 hour, 7 days per week basis, to any adult who is experiencing a psychiatric emergency. The staff assists families, police, fire, and social service agencies dealing with crisis situations and responds to private residences, police stations, health clinics, private doctor and therapist offices, and in the community of Orange County.

Services include: mental health evaluation, crisis intervention, family support and education, and community referrals. The Adult CAT's bilingual and bicultural staff also provides follow-up contact to assist with successful linkage to on-going services.

Services are also offered in Spanish, Vietnamese and Korean

Adult CAT also has a TAY component that provides specialized services to adults from 18-25 years of age.

Adult CAT also has a component called *Psychiatric Emergency Response Teams (PERT)*. PERT has mental health clinicians who ride along with police officers to provide rapid response to calls for service which often involve individuals suffering from mental illness. PERT provides mental health consultations to individuals in a mental health crisis and will link them to ongoing services. PERT currently partners with the cities of Orange, Garden Grove, Westminster, Costa Mesa, Newport Beach, Fullerton, Anaheim, Tustin, Laguna Beach and the Orange County Sheriff's Department.

Call 866-830-6011 or 714-517-6353 for services

OC Links Information and Referral Line

OC Links

OC Links is an information and referral phone and online chat service to help navigate the Behavioral Health Services (BHS) system within the Health Care Agency for the County of Orange.



Orange County | Behavioral Health Information & Referrals

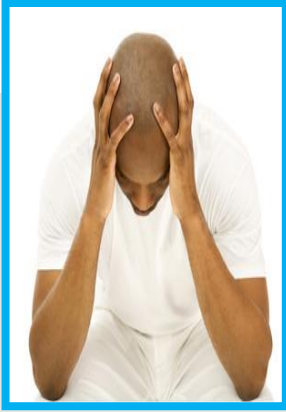
855-OC-Links
(625-4657)

Please visit us @ www.ochealthinfo.com/oclinks

Crisis Services

Crisis Stabilization Unit

The County's 24-hour psychiatric crisis stabilization program for adults



The Crisis Stabilization Unit serves Orange County residents, ages 18 and older, with major mental health disorders, who are experiencing a psychiatric crisis and require acute psychiatric stabilization and treatment.

The Crisis Stabilization Unit program will complete a risk assessment to determine the level of care needed for the client, including crisis intervention and stabilization treatment. Client follow-up and linkages are offered as clinically indicated.

The Crisis Stabilization Unit's mission is to provide required services to Medi-Cal beneficiaries and to serve unfunded clients.

Admission criteria for Adults: Danger to self or to others and/or gravely disabled – unable to provide or avail oneself of food, clothing or shelter due to mental illness. The Crisis Stabilization Unit also serves as the County Point of Access for contracted inpatient services.

CALL FIRST to avoid delays!

714-834-6900

1030 W. Warner Ave
Santa Ana, CA

Crisis Services

The TREEhouse Crisis Residential Program

The program is short-term and voluntary, typically lasting 7 – 14 days.

Individuals are in an environment in which they create their own recovery action plan with a multidisciplinary team.

Residents of Orange County, ages 18-59 who are experiencing a mental health crisis can be referred via Adult CAT or other AOABH.

Walk-ins and self-referrals are not accepted in the crisis residential program.

The **TREEhouse** (“Total Recovery Enriching Experience”) is Telecare’s Orange County Adult Crisis Residential Program. Telecare has created a *recovery-centered* experience in a safe environment for individuals who are experiencing a mental health crisis and need additional support to avoid hospitalization, stabilize symptoms, and return to their previous levels of functioning.

The program...

- Helps people cope with crisis while avoiding unnecessary psychiatric hospitalization
- Assists people to gain skills to manage their conditions and crisis more effectively
- Engages with follow-up care and community supports

For more information: 714-289-3936

Collaborative Services

Adult & Older Adult Full Service Partnerships (FSP)

The Adult and Older Adult FSP are programs designed to assist the target populations in achieving high levels of recovery through following evidence-based and best practices. The FSPs provide culturally competent services to residents in Orange County. Please call the FSP Coordination office for more information at: **714-850-8402**



The FSP programs offer a variety of services, including:

- Case Management
- Benefits Acquisition and Money Management
- Crisis Response
- Intervention & Stabilization
- Medication Evaluation & Supports
- Housing
- Peer Support
- Employment and Vocational Training
- Transportation
- Outreach and Engagement
- Family Supports and Education

STEPS – Striving Towards Enhanced Partnerships (FSP)

STEPS specializes in innovative, recovery-focused services for high-risk individuals with complex mental health needs. The FSP uses a multidisciplinary team utilizing a wrap-around approach, which believes in “*whatever it takes*” to support the needs of the clients.

STEPS strives to create an environment where a person can choose to recover, and assists individuals to gain skills to manage their conditions and crises more effectively. **STEPS** partners with community services to ensure continuity of care.

Referrals for this program come from: residential/locked facilities and a small portion from the forensic system.

For more information: 714-245-6881

OK – The Opportunity Knocks Program (FSP)

The **OK** program works with the criminal justice system, and with the homeless and those at risk of homelessness, who have serious and persistent mental illness. The multi-disciplinary, comprehensive team approach offers a clinical network of care that best meets the needs of the clients.

The **OK** services follow the Recovery and Rehabilitation Models of Care, which focus on the consumer’s strengths and self-identified goals and objectives.

Referrals for this program come from: the Probation Department, hospitals and county outpatient clinics.

For more information: 714-620-8131

WIT- Whatever it Takes (FSP)

The **WIT** program is for individuals who are referred by a specific community court program. The program offers folks a final opportunity to receive services in the community rather than in jail – as determined by the court. The **WIT** multidisciplinary team works in collaboration with officials from probation, DA’s and public defenders offices in the development of an intervention plan approved by the court. The **WIT** program serves as the fixed point of accountability and responsibility and provides support to individuals to avoid future re-incarceration, hospitalization, and homelessness. ***For more information: 714-361-7950***

Collaborative Services

Adult & Older Adult Full Service Partnerships (FSP)

Oasis – Older Adult Support and Intervention System (FSP)

The **OASIS** program is an innovative outpatient mental health program for older adults, ages 60 and over, who are dealing with a serious and persistent mental illness and who are homeless or at risk of homelessness.

The **OASIS** multidisciplinary team provides recovery-oriented services to mentally ill older adults in Orange County. Services are client/family/caregiver-driven and have bilingual capabilities.

The **OASIS** team provides a full array of mental health and case management services in the field and at a variety of locations to meet the needs of the participants.

For information, please call **OASIS** at: **714-399-3480**
1855 W. Katella Ste. 150, Orange, CA

T.A.O – Telecare and Orange AOABH (FSP)

TAO means the process of nature by which all things change, which is to be followed for a life of harmony.

TAO provides mental health services to adults with serious mental health illness. The program has an emphasis on recovery and relapse prevention and instills a “*whatever it takes*” approach in supporting the client in their recovery journey.

TAO serves individuals 18 years or older. They may also be:

- Homeless
- Dually diagnosed
- At risk for hospitalization or institutionalization
- Involved in the criminal justice system
- Transitioning from institutional care
- Not successful with traditional mental health care

Please call one of the TAO offices:
2531 W. Woodland Anaheim 714-226-9888
275 E. Baker St. Costa Mesa 714-361-6760



BHS Older Adult Behavioral Health:

BHS Older Adult Behavioral Health: 714-972-3700

OC Links 855-625-4657

OC Warm Line: **877-910-9276**

Human Services Information: Dial “211”

Office of Aging: **800-510-2020**

Adult Protective Services: **800-451-5155**

Council on Aging Orange County: **714-479-0107**

Collaborative Services

Adult and Older Adult Behavioral Health

CalWORKS BHS

CalWORKS Behavioral Health Services are confidential and designed to assist WTW (welfare-to-work) participants in overcoming mental health and substance abuse issues to become self-sufficient.

Who is eligible for CalWORKS BHS:

CalWORKS WTW participants who have mental health and/or substance abuse issues that hurt their eligibility to find and keep employment are eligible.

CalWORKS BHS Program Services:

- Individual Therapy
- Group Therapy
- Family Counseling
- Couples Counseling
- Crisis Intervention
- Case Management
- Job coaching

Please call administrative offices for more information: 1200 N. Main St., Ste 300 Santa Ana, CA **714-480-6633** *Offices in: Anaheim, Laguna Hills, Santa Ana and Cypress*

AB 109 Outpatient services

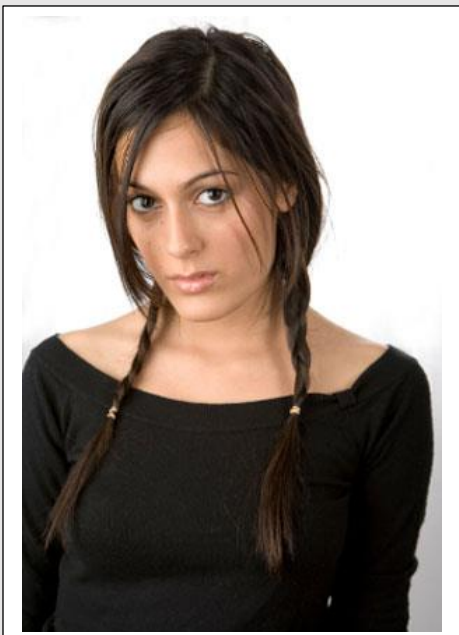
AB 109 is the public safety realignment act; it removes the barriers to treatment and promotes access to care for people upon their release from prison.

Through the placement of Health Care Agency (Health Care) staff at Probation sites, offenders have access to treatment and resources where they first report to their probation officers.

Services include:

- medical (that includes Vivitrol and Methadone detox and maintenance) and social model detox
- outpatient treatment (mental health and substance use)
- psychiatric assessment
- residential substance abuse treatment
- sober living and emergency shelter
- Medication Assisted Treatment

AB109 Plan Coordinators are located at the Adult and Older Adult Behavioral Health Clinic (AOABH) in Santa Ana for clients that are severely and persistently mentally ill.



Assisted Outpatient Treatment (AOT)

AOT, also known as Laura's Law, provided court-ordered treatment for persons with severe mental illness who meet specific criteria.

Who qualifies for AOT:

- County residents, at least 18 years old
- Person is suffering from mental illness
- Clinical determination that the person is unlikely to survive safely in the community without supervision.
- History of lack of compliance with treatment for their mental illness
- In last 36 months person has a history of at least 2 psychiatric hospitalizations, incarcerations or acts, threats or attempts of serious violent behavior towards them self or others

For more information call: 855-422-1421

Collaborative Services

Adult Collaborative Court Programs



The Adult Collaborative Court programs have clinicians conduct assessments on clients to determine appropriate services based on mental health criteria. Upon determining the need and meeting criteria, the individual will be recommended for acceptance into one of the Collaborative Courts. New members of the court program will receive individual therapy, case management, crisis intervention and medication services. The clinicians in the program will also act as the liaison between the Criminal Justice System, (i.e., the presiding Judge, Probation Department, Public Defender, District Attorney) and the county contract treatment provider. The clinician will help determine the best clinical treatment plan for the individual being served, and will make recommendations to the court team based on the plan.

The program's expected outcomes include:

- Assuring that the appropriate individuals are served by the Collaborative Courts.
- A reduction in re-incarceration for persons who go to jail repeatedly for crimes related to their mental illness
- Ability to reach and engage people who traditionally have difficulty accessing or remaining connected to mental health treatment.



Opportunity Court (OC) and Recovery Court (RC): These two courts are voluntary programs for non-violent drug offenders who have been diagnosed with serious and persistent mental illness. Individuals are served through PACT if they meet the eligibility criteria of the program regarding recent hospitalizations and/or incarcerations. If ineligible for PACT, individuals are served through other sources of treatment. A variety of services are offered through the programs, including mental health and psychiatric care, drug and alcohol abuse counseling, family counseling, and residential treatment, if appropriate.

“Whatever IT Takes” (WIT) Court: The WIT Court is a voluntary program, for non-violent offenders who have been diagnosed with serious and persistent mental illness, and who are homeless or at risk of homelessness. The program involves regular court appearances, drug and alcohol testing, meetings with the WIT Court team, and direct access to specialized services. The service provider has a variety of services for participants, including mental health and psychiatric services, drug and alcohol abuse counseling, residential treatment, family counseling, and peer mentoring. In addition, several placement opportunities are available including: access to medical services, employment counseling, job training, and assistance with obtaining government disability benefits and housing.

Assisted Intervention Court (AI): AI Court is a program for some misdemeanor offenders who have mental health problems which are so serious that ultimately the offender will likely be found incompetent to stand trial. Pending that determination, however, many of these defendants will languish in custody for weeks or months without receiving any treatment for their mental illness. Instead, through AI Court, potential participants are evaluated and, if accepted into the program, are afforded immediate mental health treatment through HCA and designated service providers.

Collaborative Services

DUI Court and Drug Court

Driving-Under-the-Influence (DUI) Court

The DUI Court Program is a highly intensive outpatient alcohol rehabilitation program for individuals with multiple misdemeanor DUI's.

This program is a minimum of 12 months and includes individual treatment, group treatment, drug/alcohol education, drug/alcohol testing, formal probation and frequent progress reviews with the judge. The DUI Court clients receive treatment services in the East County Region in Santa Ana.

Court locations:

- South DUI Court 5 Mareblu, Ste. 100 Aliso Viejo, CA 949-643-6930
- Harbor DUI Court 1200 N Main St., Ste 100-B, Santa Ana, CA 714-480-6650
- Central DUI Court 1200 N Main St., Ste 100-B, Santa Ana, CA 714-480-6650
- North DUI Court 2035 E. Ball Rd., Ste 100A Anaheim, CA 714-517-6140
- West DUI Court 14140 Beach Blvd., Ste 200 Westminster, CA 714-896-7574



Drug Court

The Orange County Drug Court Program is a **court-supervised**, comprehensive treatment collaborative for non-violent offenders. This is a voluntary program that includes regular court appearances before a designated Drug Court Judge.

Treatment includes: drug testing, individual and group counseling, and regular attendance at self-help meetings. The program's length, determined by each participant's progress, will be no less than 18 months.

Court locations:

- South Drug Court 5 Mareblu, Ste. 200 Aliso Viejo, CA 949-643-6930
- Harbor Drug Court 3115 Redhill, Costa Mesa, CA 714-850-8431
- Central Drug Court 1200 N Main St., Ste 100-B, Santa Ana, CA 714-480-6650
- North Drug Court 2035 E. Ball Rd., Ste 100A Anaheim, CA 714-517-6140
- West Drug Court 14140 Beach Blvd., Ste 200 Westminster, CA 714-896-7574

Clinic Operations

Adult Outpatient Clinics

The **Outpatient Clinics** are a safety net for individuals who would otherwise not have access to treatment due to cultural, language, socioeconomic barriers, and difficulty navigating the system of care.

Length of Services:

The client typically remains in services at the clinics for 6- 18 months depending on need.

Services offered include: assessment, individual/group/family short-term solution focused therapy, medication management, benefits acquisition, crisis intervention services, clubhouse, substance abuse groups, case management, and educational and support groups.

Population Served:

Services are extended to individuals who suffer from chronic and persistent mental illness and do not have access to other resources, have a diagnosis, and are showing significant impairments in their community functioning due to mental illness.



NORTH REGION

2035 E. Ball Road, Ste. 200, Anaheim, CA
714-517-6300
Hours: M-TH: 8 a.m. – 6 p.m. & F: 8 a.m. – 5 p.m.

SOUTH REGION

5 Mareblu, Aliso Viejo, CA
949-643-6901
Hours: M-TH: 8 a.m. – 6 p.m. & F: 8 a.m. – 5 p.m.

EAST REGION

1200 N. Main St., Ste. 200, Santa Ana, CA
714-480-6767
TDD 714-480-6767
Hours: M-TH: 8 a.m. – 6 p.m. & F: 8 a.m. – 5 p.m.

WEST REGION

14140 Beach Blvd., Ste. 223, Westminster,
714-896-7566
Hours: M-TH: 8 a.m. – 6 p.m. & F: 8 a.m. – 5 p.m.

PACIFIC ASIAN SERVICES

14140 Beach Blvd., Ste. 200, Westminster, CA
714-896-7574
Hours: M-TH: 8 a.m. – 6 p.m. & F: 8 a.m. – 5 p.m.

OLDER ADULT SERVICES

1901 E. Fourth Street. Ste. 312, Santa Ana, CA
714-972-3700
Hours: M-TH: 8 a.m. – 6 p.m. & F: 8 a.m. – 5 p.m.

Clinic Operations

Program Assertive Community Treatment (P.A.C.T.)

The Adult PACT services are located in a variety of clinics throughout Orange County. The program is designed for individuals who have not previously accessed or benefited from treatment, and have had at least two psychiatric hospitalizations or incarcerations within the last year. Participants must meet specific medical necessity requirements and be of high acuity. Specialty PACT services are available to the Pacific Asian population, Older Adults, age 60 and up, and Transitional Age Youth, ages 18-24. To find out more about PACT services, call one of the locations listed below.

**Fullerton:**

211 W. Commonwealth
Tel: 714-447-7000

Mission Viejo:

23228 Madero
Tel: 949-454-3940

Costa Mesa:

3115 Redhill
Tel: 714-850-8463

Westminster:

14140 Beach Blvd.
Tel: 714-896-7566

Santa Ana:

1200 N. Main Ste. 200
Tel: 714-480-6767

Older Adult :

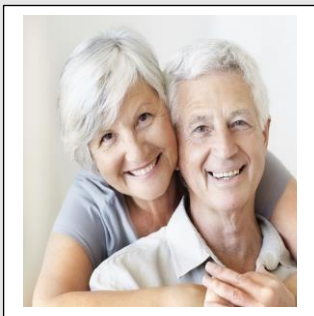
1901 E. Fourth Street, Ste. 312, Santa Ana, CA
Tel: 714-972-3700

Anaheim:

2035 E. Ball Rd., Ste. 200
Tel: 714-517-6300

PAU PACT

1200 N. Main Ste. Ste. 201 Santa Ana, CA
Tel: 714-480-6767



OLDER ADULT RECOVERY SERVICES

Offered to individuals who are at least 60 years of age and older and who have had difficulty engaging in treatment.

Engagement begins in the home and in the field.
Services are provided by a multidisciplinary team in collaboration with physical health care, and family and community supports.

Senior Health Outreach Prevention Program (SHOPP)

The SHOPP program works in collaboration with the Public Health Nurses to serve individuals in need who are 60 years of age and older, and who are experiencing a functional impairment related to a mental health issue.

The nurses will meet the seniors in their homes to assist with their health care needs with assessment, behavioral health outreach, short-term case management and linkage.

For more information, call: 714-972-3700

START – Substance Abuse Resource Team

START provides an in-home service for older adults age 60 and above who have a serious mental illness and misuse substances such as alcohol, recreational drugs, and over the counter or prescription medications.

Services include: assessment, interventions, counseling and education, coordination with health providers, case management and linkage to community services, and inpatient treatment programs.

For more information, call: 714-972-3700

Clinic Operations

Administrative Services Organization (ASO)

- The ASO provides Access Line services, including screening, authorization and linkage to an array of consumer-centered, culturally competent behavioral health services.
- The ASO serves Mental Health Plan, Medi-Cal eligible Orange County beneficiaries of all ages, including adults, older adults, families, children, and adolescents.
- The Access Line is available 24 hours a day, 7 days a week, including holidays.
- The ASO assists callers to determine Medi-Cal eligibility and screens for behavioral health needs.
- They assist beneficiaries with authorization of services to community Medi-Cal Network Providers, help callers immediately access crisis services, and provide information and linkage to other community services as needed.
- The ASO services are offered in English, Spanish, Vietnamese, Korean, and Farsi and can accommodate a variety of other languages.

The ASO provides an array of consumer-centered, culturally competent services to Medi-Cal eligible Orange County Residents. Through this ASO, adults, older adults, families, children, and adolescents may receive Mental Health Services.



To access services, call the ASO
Access Line at any time:

Call Toll Free 800-723-8641

Substance Use Disorder Outpatient Contract Clinics

Gary Center / SACS (Substance Abuse Counseling Systems)

The Gary Center/SACS is an outpatient/4-month program serving individuals 12 years and older. The center provides individual and group programs, 12-step groups, and random drug testing.

- 1525 E. 17th St., Ste. B Santa Ana, CA 714-542-0400

Mariposa Women & Family Center

Mariposa Women & Family Center is an outpatient treatment up to 4 month program serving individuals 18 years and older. Mariposa also offers 12 step programs and other ongoing self-help groups.

- 812 Town & Country Rd., Orange, CA 714-547-6494
- 2922 Rancho Viejo Rd., Ste. 122, San Juan Capistrano, CA 949-429-6888

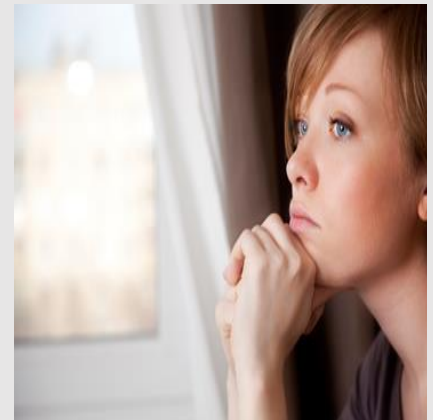
Clinic Operations

RECOVERY CENTERS (RC)

The RCs provide recovery-focused, client-centered care to consumers who have been diagnosed with, and have been significantly impaired by a chronic and persistent mental illness.

The RCs are designed to give consumers an opportunity to receive care and treatment with an emphasis on peer support and reintegration. The treatment at the RCs helps individuals prepare for the future and focuses on helping them gain a greater sense of self-determination, independent living skills and connections to community supports so they can be plugged into their communities for the continuum of care they will need to live a long, fulfilling life.

When a consumer reaches level 5 on the Milestones of Recovery Scale (MORS), they are eligible for a lower level of care at the RCs. The case management and mental health services engage consumers who are experiencing moderate intermittent disruptions in life, but who are no longer in an acute crisis state. Services include: medication support, individual and group therapy, peer support and activities for eligible individuals 18 and over, treated for a mental illness, and who may have a co-occurring substance use disorder. Currently, referrals are accepted from AOABH and outpatient clinics only.



Recovery Center- College Community Services

1901 E. Center
Anaheim, CA
TEL: 714-780-0750

Recovery Center - MHA Costa Mesa

3540 Howard Way, Ste. 150
Costa Mesa, CA
TEL: 949-646-9227

Camino Nuevo Recovery Center

1200 N Main St., Suite 650
Santa Ana, CA
Tel: 714-824-8140
Specializes in meeting the needs of the Hispanic Community.

[Community Point of Access](#)

Older Adults Recovery Services

1901 E. Fourth Street, Ste. 312
Santa Ana, CA
Tel: 714-972-3700

[Community Point of Access](#)

Recovery Center- MHA Garden Grove

12755 Brookhurst St., Ste. 116
Garden Grove, CA
TEL: 714-638-8277

Specializes in meeting the needs of the Pacific Asian Community..

Recovery Center – MHA Lake Forest

22471 Aspan St., Ste. 103
Lake Forest, CA
TEL: 949-458-2715



Clinic Operations

Outpatient- Substance Use Disorder Treatment

Substance Use Disorder Treatment

Alcohol and Drug Outpatient Services is a 6 month treatment program for persons with challenges related to drug and/ or alcohol use. The program is comprised of three 8 week phases. Each phase addressed various issues associated with addiction education, recovery, communication and relapse prevention.

Services include crisis intervention, assessment and evaluation; individual, and group counseling, HIV education, pre- and post-test counseling, and random drug testing; referrals to other programs when indicated.

North Clinic

2035 E Ball Rd., Ste 100A

Anaheim, CA

714-517-6140

Also handles Perinatal

South Clinic

5 Mareblu, Ste. 100

Aliso Viejo, CA

949-643-6930

949-643-6901 (Perinatal)

West Clinic

14140 Beach Blvd. 2nd Floor

Westminster, CA

714-896-7574

714-934-4600 (Perinatal)

East Clinic

1200 N Main St.

Santa Ana, CA

714-480-6660

Also handles Perinatal



Perinatal Services

The Alcohol and Drug Perinatal Services program is a 9 to 12 month program for women who are parenting children and who also have challenges related to alcohol and / or drug abuse. The program is comprised of three 8 week phases and a 10 week phase. Each phase addresses issues related to addiction such as recovery planning, assertiveness, parenting and relapse prevention.

The Perinatal Program takes an active role in promoting the health of our community by offering evidence based treatment to help pregnant and parenting women create positive change in their recovery. Preference is given both to women who are pregnant and IV drug users. We promote an understanding of addiction and the recovery process by providing education, helping women acquire effective coping skills, developing safe living situations and decreasing domestic violence and abuse.

Inpatient Services

The Health Care Agency offers a variety of inpatient, residential care, and housing options to those consumers needing psychiatric managed care and/ or are homeless or at risk of homelessness due to their mental illness.



Inpatient Services encompass both Managed Care and Long-Term Care Treatment Services. Services are for consumers experiencing acute psychiatric crises that require a secure environment. The Long-Term Care program serves the severely and persistently mentally ill adults who are conserved under the Lanterman-Petris-Short (LPS) Act and require an extended stay in a treatment setting. For more information regarding the inpatient services, please call: **714-834-3810**

Acute Psychiatric Inpatient Treatment

As part of the Inpatient and Residential Care or long-term housing services, this acute psychiatric inpatient hospital program provides assessment, treatment and stabilization for clients in crisis.

Treatment

Treatment may include medications in conjunction with group and recreational therapies in addition to discharge planning for aftercare.

Serving adults ages 18 and older, requiring acute psychiatric inpatient treatment in a secured setting.

Facilities

- **College Hospital**-301 Victoria St., Costa Mesa, CA
- **Royale Therapeutic Residential Center**-1030 W. Warner Ave., Santa Ana, CA
- **University of California Irvine, Medical Center**-101 The City Dr. S., Orange, CA
- **Anaheim Global Medical Center**-1025 S. Anaheim Blvd., Anaheim, CA

Inpatient Services



Long Term Care

As part of the inpatient and long-term housing or Residential Care program, there are several facilities that offer specialty care:

This residential care facility provides medication management, individual and group psychotherapy and recreational therapies combined in an individualized treatment program with the goal of helping clients to develop the skills needed for independent community living.

- **The Anne Sippi Clinic**

The facilities listed below are Institute for Mental Disease (IMD) facilities providing a 27-hour per week Specialized Treatment Program (STP) focused on helping clients to develop the skills needed to return to a community setting.

Medication and other adjunctive therapies are utilized in this long-term care setting.

- **Community Care Center**
- **Country Villa**
- **Landmark Medical Center**
- **Sierra Vista**
- **Sylmar Health and Rehabilitation Center**

The facilities listed below are **Skilled Nursing Facilities** (SNF) providing a 27-hour per week Specialized Treatment Program (STP) focused on helping clients to develop the skills needed to return to a community setting.

Medication and other adjunctive therapies are utilized in this long-term care setting.

Unlocked setting:

- **Downey Community Health Care Center**

Secured setting:

- **Royale Therapeutic Residential Center**
- **Westminster Therapeutic Residential Center**
- **West Anaheim Therapeutic Residential Center**

Residential Care & Housing office: 714-796-0200

Inpatient Services

Long Term Care

The facility listed below is a Skilled Nursing Facility (SNF) providing a Neurological Behavior Care Unit focused on assessing, diagnosing, and treating medical conditions in addition to helping clients to develop the skills needed to return to a community setting:

- **Vista Knoll**
-

Royal Mission Viejo Mental Health Rehabilitation Center (MHRC)

Is a secure 80-bed long term care facility providing individualized treatment programs designed to maximize recovery and foster skills to facilitate a return to community living.

Long Term Care State Hospitals

As part of the Inpatient and Residential Care or long-term housing services, this State Hospital program provides individualized treatment focused on maximizing recovery and helping clients to develop the skills needed to return to a community setting.

The two county contracted State Hospitals are:

- **Metropolitan State Hospital**
- **Patton State Hospital**

Medical Detox

Medical Detoxification is provided in a residential setting with 24-hour medical supervision.

- **BHS / Tom Redgate Memorial Recovery**
- **BHS / American Recovery Center**

Central Services

The Central Services (CS) unit manages programs that provide services to clients and staff from all areas of Orange County, as well as training HCA AOABH staff and Contract providers. The CS oversees a variety of programs and services to the community.



The Goodwill – Supported Employment WORKS serves individuals 18 years or older who have a serious and persistent mental illness and who may also have a co-occurring substance use disorder. Services are offered to clients County-wide, with facilities in both North and South Orange County. The program provides job-seeking and survival skills training. The vocational services encourage clients to participate in job training, volunteer work, part-time work, and education services. In addition, the program assists with GED preparation, life skills, and interpersonal communication skills. Referrals are provided through outpatient clinics & Adult Full Service Partnerships. **North County 714-638-1741 / South County 949-900-0550**

Social Security Income Outreach Services (SSI-OR) serves individuals 18 years or older who have a serious and persistent mental illness and who may also have a co-occurring substance use disorder. The **SSI-OR** program assists clients to apply for SSI Benefits and represents clients in court to appeal denials of benefits. Clients are assisted with completing paperwork and compiling supporting documentation. The program offers presentations on the SSI application. **Telephone number: 714-568-0082**



The **Representative Payee Services** is an individual or organization appointed by the Social Security Administration (SSA) to receive Social Security Disability and/or Supplemental Income benefits for someone who is not fully capable of managing their own benefits and monies. The Representative payee sets up a trust account on behalf of the client to meet the current and foreseeable needs and expenses of the individual. The Representative Payee does not act as a legal guardian or conservator, but assists the client with money management, along with providing protection from financial abuse or victimization.

OC Links

OC Links is an information and referral phone and online chat service to help navigate the Behavioral Health Services (BHS) system within the Health Care Agency for the County of Orange.



Please visit us @ www.ochealthinfo.com/oclinks

Central Services

The [Goodwill – Volunteer-to-work](#) program serves individuals 18 years or older that are identified as having mild to severe mental illness. The program is a community-based program that utilizes trained Consumer mentors to facilitate the preparation and involvement of program Participants in volunteer and employment positions in the community. Participants are placed in volunteer positions that best meet their strengths, desires and goals. **Call 714-638-1741 for more information.**

[Peer Mentoring Program Coming Winter 2015](#)

The Peer Mentoring Program will provide services to adults 18-59 years old, and older adults over 60 years of age, who have been or are soon to be discharged from a psychiatric hospital, or are currently at risk for psychiatric hospitalization.

The services target some of the most common reasons for re-hospitalization, including interruption of medication, lack of social support and unstable housing. Mentors assist the consumer with identified needs, including social support, food, clothing, transportation, housing and community resources.

Wellness and Peer Support Center



The [Wellness and Peer Support Center's mission](#) is to provide a safe and nurturing environment for each individual to achieve his or her vision of recovery by providing acceptance, dignity and social inclusion. The [Wellness Center](#) is 100% consumer-run, with staff that are consumers of mental health services, and are committed to peer-to-peer promotion with community integration of emotional, physical, spiritual and social domains. The [Wellness Center](#) facilitates over 100 groups weekly and has a growing number of members volunteering in the community as their way of giving back.

The ultimate goal is to reduce reliance on the mental health system with increased self-reliance by building a healthy network of support, which may involve the member's family, friends and significant others.

The [Wellness Center](#) serves adults over 18 years of age and residing in Orange County, who have been diagnosed with a serious mental illness and who may have a co-occurring disorder. The individuals are relatively stable and are working on their recovery, and need a support system to assist in maintaining their stability while they progress in their personal growth and development.

The services are culturally and linguistically appropriate to meet the needs of a diverse population. The services also include: personalized socialization, relationship building, educational opportunities and assistance maintaining benefits and setting employment goals. These services facilitate and promote recovery and empowerment in mental health consumers.

**2 Locations: 401 S. Tustin Ave., Bldg C, Orange, CA
714-361-4860**

**23072 Lake Center Dr., Ste. 115, Lake Forest, CA
949-528-6822**



Central Services

Homeless Multi-Service Center

The Homeless Multi-Service Center is a drop-in center for homeless individuals with mental illness or co-occurring disorders. Services at the Center include evaluation and assessment, individual and group counseling, substance abuse prevention and education, case management, referral services, housing services, vocational services, and other therapeutic activities.

The Center also provides a hot lunch, a light breakfast and snacks, access to shower facilities, laundry services, local telephone calls, clothing, bus vouchers, a place for consumers to receive their mail, and referrals to appropriate mental health services according to their need.

Daily transportation is provided between the County's mental health short-term housing programs and the Center.

The goal of the Center is to provide homeless disabled individuals with assistance in an atmosphere in which they feel safe and comfortable to engage in services and address their illness.

Site Hours:

6a.m. to 3p.m. daily, 7-days a week, 365-days a year

**Location: 2416 South Main Street Santa Ana, CA
714-668-1530**



Recovery Maintenance Services

AOD counselor and peer run drop-in recovery maintenance services. Services include: peer mentoring, coaching, support groups, 12-step meetings, parenting class, fitness and recreational activities.

**Location: 1207 East Fruit Street Santa Ana, CA
For more information call: 714-953-9373**

Central Services

Narcotic Replacement Therapy Services

Target population(s):

- Adult males and females with opioid addiction needing narcotic replacement maintenance therapy (maintenance) or narcotic replacement detoxification (detox)
- Individuals with HIV and Hep C disease and/or incarcerated pregnant women for maintenance therapy.
- Detoxification and Maintenance services for individuals at or below 200% of federal poverty level.
- Pregnant women who are incarcerated and already on methadone,

Services to be provided:

Maintenance: Daily methadone dosing; assessment and evaluation; individual sessions; services for the dually diagnosed; case management; relapse prevention; crisis intervention; and linkage and referral services. Services are provided seven days a week, 365 days a year.

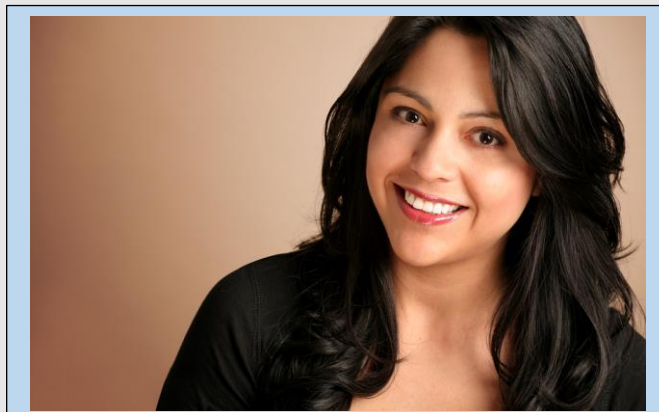
Detoxification: Daily methadone dosing used in decreasing medically determined dosage levels for a period of no more than 21 days to reduce or eliminate opioid addiction; assessment and evaluation; individual sessions; services for the dually diagnosed; case management; relapse prevention; crisis intervention; and linkage and referral services. Services are provided seven days a week, 365 days a year.

Methadone Maintenance and Detoxification

2 Locations:

218 E. Commonwealth Avenue Fullerton, CA
Fullerton office: 714-992-4770

10751 Dale Street Stanton, CA
Stanton office: 714-821-5311



Residential Drug Treatment Services

Adult Substance Use Disorder (SUD) Residential Treatment Services

If you or someone you love is struggling with drug and alcohol use, help is available through our county-contracted substance use disorder residential treatment facilities. Individuals must not have used in the last 24 hours, and not be in need of a detox to be eligible for residential treatment. Residential treatment is for individuals who need additional structure and support than an outpatient counseling program can provide. Residential treatment allows you to focus on your recovery in a safe, drug free environment. No one is denied services for the inability to pay, though individuals will be required to subsidize their recovery once an income is established. You will be required to spend the first 30 days of treatment in the facility. Once you have started to achieve your treatment goals, you will gradually be allowed to start the resocialization process. During the resocialization phase you will be able to secure employment, take passes and work on interpersonal relationships with family and friends.

What services are offered at residential SUD treatment programs?

Most SUD residential treatment services are for up to 90 days and provide a 24-hour supervised drug-free environment. Adolescent and Perinatal treatment programs are up to six months. Services include assessment and evaluation, individual, group and family counseling, health education, services for co-occurring substance use disorders and mental illness, case management, transportation, relapse prevention, life skills, education/vocation training, employment assistance, sober activities and linkage and referral to medical and psychiatric services, and other community services. Treatment combines guiding principles of the Twelve-Step programs and evidence-based clinical practice. All programs have clinical staff and staff with “lived experience” who understand and have the skills to work with individuals seeking recovery.

Residential Treatment Providers Modalities

All county contracted providers provide the services mentioned above. There are various modalities of residential treatment, some have a strong 12-step focus, and others offer a hybrid of clinical, therapeutic community and 12-step practices. All models are effective. All treatment providers offer exposure to Narcotics Anonymous and Alcoholic Anonymous. In addition to the various models, programs address the specific needs of various populations. There are programs that are gender specific, women and children, Latino/a focused, HIV, and programs that allow medication assisted treatment (methadone, suboxone, Naltrexone/Vivitrol etc.) All County contracted programs are approved by Orange County Probation Department, and recognized by the courts as appropriate alternative placement.

Please refer to the list below to locate the provider which best suits your need or your preference:

Residential Drug Treatment Services

These are county-contracted inpatient services. Most contractors have specific populations they serve. To have a participant be referred/placed on the centralized waitlist for these services, please call **OC Links @ 855-OC Links (625-4657)**. Special requests for specific programs may be accommodated, but may delay the ability to enter treatment promptly.

Pregnant and Perinatal Women

Heritage House North and South specialize in serving pregnant, post-partum, and parenting women. Women can bring children up to age 12 to stay with them. Childcare, parenting classes and medical care are all provided or arranged. *Treatment stay is up to 6 months.*

Heritage House North
321 N. State College Blvd.
Anaheim
714-687-0077

Heritage House South
2212 Placentia Ave..
Coast Mesa
949-646-2271

Opiate Users or/and HIV Positive Substance Users

Gerry House exclusively serves HIV positive clients with any substance use disorder, and/or opiate substance users (including those who are using methadone, suboxone or Vivitrol to assist in their treatment). Treatment includes linkage to medical care.

Gerry House
1225 W. 6th St, Santa Ana
714-972-1402

General Adult Population

The Villa is a women only program deeply rooted in 12-step practices.

The Villa Center
910 N. French St, Santa Ana
714-541-2732

Casa Elena is Latina focused for women only and is delivered in a culture-specific framework in English and Spanish. This program is deeply rooted in 12-step practices. Program is open to all ethnicities.

Casa Elena
832 S. Anaheim Blvd, Anaheim
714-722-5580

Hope House is a co-ed treatment program and works well with client with co-occurring mental and/or physical problems, HIV positive or involved in criminal justice system. Program offers a hybrid of a therapeutic community and best practices.

Hope House
707 N. Anaheim Blvd, Anaheim
714-776-7490

Woodglen Recovery Junction is a co-ed treatment program which is deeply rooted in 12-step practices.

Woodglen Recovery Junction
771 W. Orangethorpe, Fullerton
714-879-0929

Unidos Recovery Home is a Latino focused men only program and is delivered in a culture-specific framework in English and Spanish. This program is deeply rooted in 12-step practices. Program is open to all ethnicities

Unidos Recovery
9842 W. 13th St, Ste B., Garden Grove
714-531-4624

Phoenix House has a gender segregated program which works well with clients with co-occurring mental problems, HIV positive or involved in criminal justice system. Program offers a hybrid of a therapeutic community and best practices.

Phoenix House
1207 E. Fruit St, Santa Ana
714-953-9373

Residential Drug Treatment Services

Social Model Detoxification

Social model detox is a non-medical detoxification setting which provides a comfortable environment where you can safely and securely withdraw from the effects of substance while qualified staff provides 24-hour monitoring and care. The duration of care is up to 7 days. The detoxification process consists of three essential components: evaluation, stabilization and fostering client readiness for entry into a treatment program. Detoxification is not treatment in itself but an essential first step to the recovery.

Currently County has contracted with three social model detox programs:

The Roque Center

10936 Dale Ave, Stanton
714-952-4032

Woodglen Detox

772 W. Orangethorpe, Fullerton
714-879-0929

Unidos Detox

9842 W. 13th St, Ste B., Garden
Grove
714-531-4624

Medical Detoxification

Medical Detox is provided in a residential setting with 24-hour medical supervision. The process is designed to help client safely and comfortably withdraw from alcohol and other drugs of abuse. The duration of care is up to 10 days. Clients will be educated about addiction, introduced to self-help programs such as Alcoholics Anonymous and Narcotics Anonymous, and linked to continuing care and other community support.

Currently County has contracted with two medical detox programs:

American Recovery Center

2180 W. Valley Blvd, Pomona
(909) 865-2336

Tom Redgate Memorial Recovery Center

1775 Chestnut Ave, Long Beach
(562) 599-8444

If you are interested in any of the services above, please contact provider directly or call our OC Links Information and Referral Line at 855-OC-LINKS (625-4657).

Residential Services

Placement and Housing Assistance

Residential Care and Housing (Res Care)

This is a unit which assists county and community programs with housing resources for their clients. The Res Care services are for the homeless or those at risk of homelessness.

These resources include:

- *The **Residential Rehabilitation (Res Rehabs)** services are offered at five locations and at one additional facility for the elderly. The **Res Rehabs** are an 18-month transitional program to assist individuals moving from hospitals and long-term care facilities into a lower level of housing support.
- *The **Shelter Plus Care (S+C)** is HUD funded programs which assist clients of the AOABHS system, SUD and the AIDS Services Foundation with applying for subsidized independent housing within Orange County.
- * The **Mental Health Services Act (MHSA) Housing Program** was allocated monies for subsidized housing for clients of the AOABH system. Many of the housing projects are still under development.
- * **Short Term/ Transitional Housing** is available for clients of the AOABH system, stay can be up to 120 days.
- ***Sober Living** seeks to provide a multi-faceted and personal alternative to standard drug and alcohol rehabilitation programs.

For more information regarding the RES Care Housing programs, call: 714-796-0200



TheNavigator



Adult & Older Adult Behavioral Health

For more information concerning this publication
please contact: OC Links 855-OC-LINKS (855-625-
4657)

Or visit us @:

<http://ochealthinfo.com/oclinks>

OC Links Information and Referral Line

OC Links

OC Links is an information and referral phone and online chat service
to help navigate the Behavioral Health Services (BHS) system within
the Health Care Agency for the County of Orange.



Orange County | Behavioral Health Information & Referrals

855-OC-Links
(625-4657)