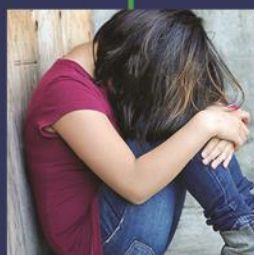




# BEHAVIORAL HEALTH SERVICES DIRECTORY



Thank you for your interest in the programs available through the OC Health Care Agency's (HCA) Behavioral Health Services (BHS) division, which include mental health and substance use disorder services.

## MISSION STATEMENT

Our mission is to prevent substance abuse and/or mental health crisis; when signs are present, to intervene early and appropriately; and when assessments indicate that treatment is required, to provide the right type of treatment, at the right place, by the right person/programs to help individuals achieve and maintain the highest quality of health and wellness.

Our team strives to achieve this mission by focusing on four key areas:

1. Increasing public access to behavioral health programs and services.
2. Ensuring those programs and services are co-occurring capable, which means that they are appropriate courses of treatment and care for individuals with two or more simultaneous disorders; for example, a person may suffer from substance abuse as well as bipolar disorder;
3. Practicing cultural competency, or a set of behaviors, policies, and attitudes that form a healthy professional environment that is deeply aware of and respectful toward different human behaviors, languages, communication styles, actions, values, religious beliefs, social groups, and ethnic perceptions.
4. Continuously improving the quality of all that we do.

This directory includes descriptions and information about all of the programs available to Orange County residents and guide individuals and families through a comprehensive array of services spanning a variety of treatments and intensity levels depending on their evolving, individual needs.

## Service Category Overview

**BHS Navigation Services** assists the community in accessing needed behavioral health services and understanding the Continuum of Care system here at HCA. Related programs include the OC Links Information and Referral Line, BHS Outreach and Engagement Services, BHS Veterans Programs, and the Office of Consumer and Family Affairs.

**Prevention and Early Intervention Services** includes a wide variety of services targeting all age groups including early intervention, prevention, Veteran and training programs. Related services include parenting education and supportive services, telephone-based supportive services, and school-based programs designed to create a system of first help. They have been especially effective in reaching out to more diverse racial and ethnic communities. This category also includes statewide efforts to prevent suicide and reduce stigma and discrimination related to mental illness as well as efforts to improve student mental health.

**Crisis Services** programs help individuals of all age groups during a behavioral health emergency and are designed to rapidly address and respond to individuals in crisis in order to achieve the most desirable outcomes. These programs aim to provide treatment in the most dignified, recovery oriented and least restrictive setting as appropriate, in lieu of an inpatient setting, whenever possible. Crisis services works with individuals' immediate support networks and assists in referral and linkage in order to keep the individuals connected in the community with structured support (when appropriate) in order to promote recovery/resiliency and have a plan in place to divert any future crises. They include the



Crisis Assessment Team (CAT), Crisis Stabilization Unit (CSU), Crisis Residential as well as In-Home Crisis Stabilization for Children/Transitional Aged Youth (TAY)/Adults, and the Crisis Hotline.

**Outpatient Services** includes a wide-variety of County-operated and contracted outpatient clinics throughout Orange County, California targeting adults and older adults with Severe and Persistent Mental Illness, TAY with severe mental illness, and children and youth with serious emotional disturbance. Outpatient Services also include Substance Use Disorder (SUD) treatment for all ages.

**Intensive Outpatient Services** provides a higher level of care and are structured to meet a greater level of need. Treatment programs target individuals needing greater structure and more intensive services to engage in treatment and who are at increased risk of hospitalizations and incarcerations. Lower caseloads in these programs allow for more frequent contact and engagement in the community. They include the Program for Assertive Community Treatment, Collaborative Court, and Full-Service Partnership programs.

**Inpatient Services** offers the most intensive level of care and is provided in hospital settings. In addition, long-term care programs are offered to those requiring psychiatric treatment for an extended period in a secured setting.

**Residential Treatment Services** offers substance use and mental health disorder treatment programs and residential detox programs.

**Housing** offers a variety of options to those who are in need of behavioral health care and are also homeless or at risk of becoming homeless. These programs included emergency housing, permanent supportive housing and Residential Rehabilitation (also known as Board & Care).

**Recovery & Supportive Services** are supplemental to and supportive of the other treatment programs listed in this directory. These broad-spectrum services can often be utilized by clients in several different service categories, and include The Wellness Center, Adult Supported Employment, Office of the Public Guardian, Peer Mentoring, Workforce Education and Training and Patient's Rights.

All of these programs can be accessed by calling OC Links, the BHS Information and Referral Line, Monday through Friday 24 hours a day, 7 days a week at 855-OC-Links (625-4657) or chatting with a navigator online

<https://www.ochealthinfo.com/bhs/about/nit/oclinks/>



Orange County | Behavioral Health Information & Referrals

**855-OC-Links**  
(625-4657)



# TABLE OF CONTENTS

BEHAVIORAL HEALTH SERVICES NAVIGATION SERVICES .....	4
PREVENTION AND EARLY INTERVENTION .....	18
CRISIS SERVICES.....	37
OUTPATIENT SERVICES.....	48
INTENSIVE OUTPATIENT PROGRAMS .....	86
INPATIENT.....	115
RESIDENTIAL TREATMENT.....	1245
HOUSING .....	13738
RECOVERY & SUPPORTIVE SERVICES .....	1423





# BEHAVIORAL HEALTH SERVICES NAVIGATION SERVICES

## OC Links Information and Referral Line

### Program Description

OC Links Behavioral Health Line is available 24/7 at (855) 625-4657. OC Links provides information and linkage to any of the Health Care Agency's Behavioral Health Services, including crisis services, via telephone and chat. Callers can be potential participants, family members, friends, law enforcement and other first responders, providers or anyone seeking behavioral health resources and support. Trained Navigators provide information, referral, and linkage directly to programs in the behavioral health continuum of care from prevention through crisis identification and response. If you would like to learn more about services available through Behavioral Health Services, OC Links is available 24 hours a day, 7 days a week. Please call (855) OC-LINKS to be connected to a Behavioral Health Navigator, or click on the OC Links Chat icon at <https://www.ocalthinfo.com/bhs/about/nit/oclinks/>. TDD Number: 714-834-2332.

### Serving

Orange County residents of all ages.

### Operated by

County of Orange, Health Care Agency

### Administrative Address

500 City Parkway West, 4<sup>th</sup> Floor, Orange, CA 92868

### Phone

(855) OC-LINKS (855-625-4657)  
TDD (714) 834-2322

### Web Address

[www.ocalthinfo.com/oclinks](https://www.ocalthinfo.com/oclinks)

### Language(s)

English, Spanish, Vietnamese, Farsi (additional translation services available)

### Hours of Operation

24 hours a day, 7 days a week





## Office of Consumer and Family Affairs

### Program Description

The Office of Consumer and Family Affairs provides individuals living with a behavioral health condition and their family members with emotional support, community resources, and assistance in navigating the behavioral health system. Staff is available, by request, to visit local hospitals and help family members advocate for adult relatives on involuntary psychiatric hold there as well as to better understand the related process. They also work to educate medical providers about the variety of behavioral health services available here in Orange County.

### Serving

Orange County residents of all ages.

### Operated by

County of Orange, Health Care Agency

### Address

500 City Parkway West, 4<sup>th</sup> Floor, Orange, CA 92868

### Phone

(714) 834-5917

### Web Address

<http://www.ochealthinfo.com/bhs/about/nit/nav/ocfa>

### Language(s)

English, Spanish (additional translation services available)

### Hours of Operation

Monday – Friday, 8 a.m. – 6 p.m.



## Outreach and Engagement Services

### Program Description

Our Outreach and Engagement Services program provides education, assessment, short-term case management, educational and life skills classes; support groups, transportation assistance and in-person outreach to two specific groups here in Orange County:

**(1) Serving:** Residents of all ages and populations who are at risk of developing a mental illness or who are displaying early signs of emotional, behavioral, or mental instability or co-occurring substance abuse disorders. Among this group, the program seeks to prevent the development of mental health conditions and intervene early in their manifestation to reduce risk factors/stressors and prevent conditions from getting worse. While assisting participants in building skills, the program provides support and referrals/linkages to appropriate community resources.

**Operated by:** The following County Contractors, which provide services to residents and populations of all ages by geographic region:

**Child Abuse Prevention Center** (Serves Central OC)

**Address:** 2390 E. Orangewood Ave., Ste. 300, Anaheim, CA 92806

**Phone:** (888) 955-6570

**Web Address:** [www.brightfutures4kids.org](http://www.brightfutures4kids.org)

<i>Costa Mesa</i>	<i>Orange</i>
<i>Fountain Valley</i>	<i>Santa Ana</i>
<i>Garden Grove</i>	<i>Villa Park</i>
<i>Huntington Beach</i>	

**Orange County Asian Pacific Islander Community Alliance**

(Serves North OC)

**Address:** 12900 Garden Grove Blvd., Ste. 225, Garden Grove, CA, 92843

**Phone:** (844) 530-0240

**Web Address:** [www.ocapica.org](http://www.ocapica.org)





Anaheim	Orange
Brea	Placentia
Buena Park	Seal Beach
Cypress	Stanton
Fullerton	Westminster
La Habra	Yorba Linda
La Palma	

**Western Youth Services** (Serves South OC)

**Address:** 131 W. Midway Dr., Anaheim, CA, 92805

**Phone:** (844) 243-0048

**Web Address:** [www.westernyouthservices.org](http://www.westernyouthservices.org)

**Hours of Operation:** For all the locations listed above, Monday – Friday from 9 a.m. – 5 p.m. with nights/weekends based on service.

Aliso Viejo	Lake Forest
Dana Point	Mission Viejo
Irvine	Rancho Santa Margarita
Laguna Beach	San Clemente
Laguna Hills	San Juan Capistrano
Laguna Niguel	Tustin
Laguna Woods	



## BHS Outreach and Engagement Services

### Program Description

Individuals who are homeless or on the verge of becoming homeless. Among this group, services are offered to individuals of all ages with behavioral health conditions ranging from mild to moderate to severe and chronic mental illness. Staff frequents known gathering places for the homeless including food banks, shelters, and public areas such as parks/libraries in order to identify potential consumers and screen for program eligibility.

The focus here is on rapport building to increase the consumer's acceptance of mental health treatment and ultimate integration into his or her community of choice. The team responds to community referrals and collaborates with various community partners in support of an individual's recovery.

### Operated by:

County of Orange, Health Care Agency

### Address

500 City Parkway West, 4<sup>th</sup> Floor, Orange, CA 92868

### Phone

(800) 364-2221 or (714) 834-7742

### Fax

(714) 834-8235

### Web address

[www.ochealthinfo.com/oe](http://www.ochealthinfo.com/oe)

### Hours of operation

Monday – Sunday 8 a.m. – 5 p.m.



## OC4Vets

### Program Description

OC4Vets is a Mental Health Services Act program in partnership with the OC Community Resources Veterans Service Office and the Workforce Investment Board. Services are aimed at assisting military veterans and their families to become aware of and to access needed community and behavioral health services. In addition to the standard Veterans Service Office services (i.e., assistance with application for compensation, pensions, and other VA related benefits), participants are provided brief screening, case management, linkages for medical, mental health, substance use disorders, housing, job skills enhancement, employment, work sustainment coaching, and other services as required.

### Serving

Orange County veterans, active military, reserve status, National Guard, Air National Guard, retired, previous military service, and military families. Character of military discharge, length of service, or combat experience is not used as acceptance criteria.

### Operated by

County of Orange, Health Care Agency

### Address

1300 S. Grand Ave., Bldg. B, Santa Ana, CA 92705 (located on the OC Operations Center campus)

### Phone

(714) 480-6476

### Web Address

<http://www.ochealthinfo.com/bhs/about/pi/veterans>

### Language(s)

English, Spanish, other languages accommodated upon request

### Hours of Operation

Monday – Friday, 8 a.m. – 5 p.m.; closed on County holidays



## Strong Families, Strong Children (SFSC)

### Program Description

Strong Families, Strong Children: Behavioral health Services for Military Families is a Collaboration of community partners that provides support to military families throughout Orange County. The project is staffed with trained clinicians and peer counselors with experience and knowledge of military culture and issues. Services are at no cost to the participants.

Services include.

- Screening and assessment
- Case management
- Peer navigation support
- Referrals/linkages
- Individual/family/child therapy
- Workshops
- Domestic violence prevention
- Parenting
- Legal services
- Housing and basic needs support

### Serving

Military or veteran connected (spouse, child, widow, ex-spouse, extended family and guardian), we do not require written proof of military status, Orange County Residents in the event of homelessness resident requirement may allow for exception. Adults Teens Children Families Females Males

### Operated by

Child Guidance Center, Inc.

### Address

525 N. Cabrillo Park Drive, Suite #300, Santa Ana, CA 92701

### Phone

(714) 953-4455 ext 661 Fax (714) 542-2793

### Web Address

<http://www.strongfamilies@cgcinc.org/>

### Language(s)

English, Spanish

### Hours of Operation

Monday – Friday, 8 a.m. – 5 p.m.



## 'Veterans' Court Services

### Program Description

Veterans' Court Services provides case management to veterans in the Orange County Superior Court system and the Veterans Non-Criminal Domestic Violence Family Court. This service provides case management to court-assigned veterans who are in need of behavioral health support, referrals and linkages to the Veteran Administration (VA), Veterans Centers, and community organizations that provide treatment and other services to veterans, military, and family members.

### Serving

Orange County adults who are active military, veterans, or families of military members/veterans.

### Operated by

County of Orange, Health Care Agency

### Address

1300 S. Grand Ave., Bldg. B, Santa Ana, CA 92705 (located in the Orange County Operations Center campus)

### Phone

(714) 480-6476

### Web Address

<http://www.ochealthinfo.com/bhs/about/nit/veterans>

### Language(s)

English

### Hours of Operation

Monday – Friday, 8 a.m. – 5 p.m.



## College Veterans Program - US Veterans Outside the Wire

### Program Description

U.S. VETS created Outside the Wire (OTW) to provide preventative and early mental health treatment to veterans returning from Iraq and Afghanistan. California is home to a large percentage of the nation's veterans.

Many veterans do not ask for the help they need. Whether they are frustrated by waiting months for an appointment, or afraid to revisit the memories, about 60 percent of veterans returning from combat duty with PTSD will not seek treatment. OTW aims to make these crucial services more readily available, by bringing them where many of these veterans already are – on campus.

Record numbers of post-9/11 veterans are going to college with the GI Bill. By operating out of community colleges and technical schools throughout Los Angeles and Orange Counties, OTW offers individual and group therapy to student veterans and their families. Strong partnerships with these schools allows OTW to provide comprehensive mental health services through veteran student counseling and resource centers.

By focusing on the specific needs of veterans striving to successfully reenter civilian life, OTW provides unique training opportunities to mental health professionals, including psychology trainees, social work, and marriage and family therapist interns. We are creating a strong network of qualified individuals who can provide care for military personnel and their families as they manage the pressures of combat-related stress and post-war adjustments.

Individual, group, and family therapies offered through OTW include:

- Cognitive Behavior Therapy Interventions (CBT)
- Substance Abuse Intervention
- Parenting Skills Intervention
- Anger Management Strategies
- Coping and Problem-Solving Skills

By bringing these preventative and early mental health treatment options to post-9/11 veterans, OTW helps to increase their chances of transitioning successfully to civilian life.

### Serving

Veteran students at seven community college campuses.

- Coastline College
- Cypress College
- Fullerton College
- Golden West College
- Irvine Valley College
- Orange Coast College
- Santa Ana College

### Operated by

US Vets Outside the Wire (OTW)

### Address

1816 S. Figueroa St. Los Angeles, CA 90015





<b>Phone</b>	(888) 556-9993
<b>Fax</b>	
<b>Web Address</b>	<a href="https://cms.ocgov.com/gov/health/bhs/about/nit/veterans.asp">https://cms.ocgov.com/gov/health/bhs/about/nit/veterans.asp</a>
<b>Language(s)</b>	English, Spanish
<b>Hours of Operation</b>	Monday – Friday, 8:30 a.m. – 4:30 p.m.



## Mental Health Career Pathways – Recovery Education Institute (REI)

### Program Description

Mental Health Career Pathways offers courses through the Recovery Education Institute (REI), which prepares individuals living with mental illness and their family members to pursue a career in behavioral health. REI provides training on basic life skills, career management and academic preparedness, and offers certified programs to solidify the personal and academic skills necessary to work in behavioral health field. In addition, REI contracts with Saddleback College to offer a Mental Health Worker Certificate program that prepares students to enter the public mental health workforce.

### Serving

Adult Consumers, eighteen (18) years of age and older, who are currently living in Orange County and receiving services with Orange County's behavioral health system of care and family members of participants, eighteen (18) years of age and older, residing in Orange County.

### Operated by

County Contracted – Recovery Education Institute (REI)

### Address

401 S. Tustin St., Orange, CA 92866

### Phone

(714) 244-4322

### Web Address

<http://www.pcrei.org>

### Language(s)

English

### Hours of Operation

Monday – Thursday 9 a.m. – 9 p.m. & Friday 9 a.m. – 3 p.m.



## Crisis Intervention Training (CIT) for Law Enforcement

### Program Description

The best-practice Crisis Intervention Training (CIT) has been providing training services to Orange County law enforcement officers and dispatchers. CIT offers a comprehensive training program to first responders, including law enforcement officers and public safety dispatchers, which helps raise awareness of the mental health issues in the community. As first responders, they gain the techniques needed to de-escalate mental health crisis by identifying signs and symptoms of an individual experiencing a mental health crisis.

### Serving

Orange County first responder agencies including: law enforcement officers, public safety dispatchers, emergency medical services personnel, firefighters, and paramedics

### Operated by

County Contracted – Golden West College

### Address

15744 Goldenwest St., Huntington Beach, CA 92647

### Phone

(714) 895-8369

### Web Address

<http://www.goldenwestcollege.edu/cjtc>

### Language(s)

English

### Hours of Operation

Monday – Friday 8 a.m. – 5 p.m.



## Behavioral Health Training Collaborative (BHTC)

### Program Description

This program provides mental health trainings that reduce stigma and supports a greater understanding of mental illness in the community. The goal of Behavioral Health Training Collaborative (BHTC) is to provide behavioral health training services to community members utilizing in-person and online instruction to reach a broad range of audience. BHTC delivers training services by using five subcontractors, subject matter experts and with trained staffs. BHTC also reaches out to clinical and non-clinical providers to offer training topics at their sites, community locations and online.

### Serving

Clinical providers, non-clinical providers, and community members in Orange County.

### Operated by

County Contracted – Western Youth Services (WYS)

### Address

23461 S. Pointe Dr. Suite 220, Laguna Hills, CA 92653

### Phone

(949) 900-3246

### Web Address

<http://www.westernyouthservices.org>

### Language(s)

English, Spanish, Vietnamese, Korean, Arabic, and Farsi (American Sign Language as needed)

### Hours of Operation

Monday – Friday 8 a.m. – 5 p.m.





# PREVENTION AND EARLY INTERVENTION

## Community Counseling & Supportive Services (CCSS)

### Program Description

The counseling program is designed to serve individuals of all ages experience mild to moderate behavioral health conditions including trauma. The program specializes in providing services to diverse communities including LGBTQI+, deaf and hard of hearing and underserved ethnic communities. While the program is designed to provide services to individuals with no or limited access to behavioral health services, everyone who calls will be assisted in linking to appropriate services.

### Serving

All ages, LGBTQI+

### Operated by

County of Orange, Health Care Agency

### Address

4000 W. Metropolitan Drive, Suite #405, Orange, CA 92868

### Phone

(714) 645-8000

### Fax

(714) 954-2985

### Web Address

<http://ochealthinfo.com/bhs/about/pi/mhsa>

### Language(s)

English, Spanish, Arabic (interpretation in other languages available upon request)

### Hours of Operation

Monday – Thursday, 8 a.m. – 6 p.m.; Friday, 8 a.m. – 5 p.m.





## Children's Support and Parenting Program (CSPP)

### Program Description

The Children's Support and Parenting Program (CSPP) is a prevention program serving a wide range of families from different backgrounds whose stressors make children more vulnerable to developing behavioral health problems. CSPP utilizes two evidence-based curricula in this effort: The Parent project and Strengthening Families. Program services focus on families that have a common parental history of serious substance abuse and/or mental illness; children living with family members who have developmental or physical illnesses/disabilities; children living in families that are impacted by divorce, domestic violence, trauma, unemployment, homelessness, etc.; families of active duty military/returning and families that have a child who is displaying moderate to serious behavioral problems such as truancy, substance experimentation, gang involvement, or other challenging behaviors. CSPP services consist of 10 to 12-week, multi-family, multi-generational psycho-educational classes in the community. They are offered to eligible families in the community to increase parenting skills and support, increase child resiliency, and improve the overall strength of the family. Classes are usually held in the evening when all the family can attend, but morning classes, for parents only, are also available. Brief family intervention sessions and referrals to community services are available to all participants.

### Serving

Parents and caregivers with children ages six to 17 from different backgrounds whose stressors make their children more vulnerable to developing behavioral health problems. Childcare provided for children zero through five.

### Operated by

County of Orange, Health Care Agency

### Address

4000 W. Metropolitan Drive, Suite #400, Orange, CA 92868

### Phone

(714) 480-4678

### Fax

(714) 480-6608

### Web Address

<http://ochealthinfo.com/bhs/about/pi/support/cspp>

### Language(s)

English, Spanish (interpretation in other languages is available upon request)

### Hours of Operation

Monday – Friday, 8 a.m. – 5 p.m. (some evening hours)



## School Based Behavioral Health Intervention and Support – Phoenix House

### Program Description

School Based Behavioral Health Interventions and Supports provides services and curriculum for students and their families for the purpose of preventing and/or interrupting the onset or progression of behavioral health conditions, negative social behaviors, and emotional distress in youth exhibiting early signs of problem behaviors. Services will be delivered to elementary, middle, and high schools in school districts that have the highest indicators of behavioral issues, including dropout rates, expulsion, and suspensions. Curriculum will be implemented at the classroom level for all students to explore a positive approach to the school environment. More intensive curriculum will be implemented for students and families based on assessed need.

### Serving

Students at elementary, middle, and high school sites in Orange County.

### Operated by

County Contracted – Phoenix House

### Address

1207 E. Fruit St., Santa Ana, CA 92701

### Phone

(800) 251-0921 or (714) 953-9373

### Web Address

<http://www.phoenixhouse.org/>

### Language(s)

English

### Hours of Operation

Monday – Friday, 8 a.m. – 5 p.m.



## School Based Mental Health Services (SBMHS) Program

### Program Description

The School Based Mental Health Services (SBMHS) program provides prevention and early intervention services targeting students with mild to moderate depression, anxiety, and substance abuse problems to address symptoms early, reduce risk factors, build resiliency, and strengthen culturally appropriate coping skills in students. Services include assessment, counseling, group interventions, case management and linkage to community services.

### Serving

Children and adolescents who are Orange County residents attending intermediate schools (grades 6-8) within the Santa Ana Unified School District.

### Operated by

County of Orange, Health Care Agency

### Address

4000 W. Metropolitan Drive, Suite #402, Orange, CA 92868

### Phone

(714) 954-2900

### Fax

(714) 939-2012

### Web Address

<http://ochealthinfo.com/bhs/about/pi>

### Language(s)

English, Spanish (interpretation in other languages available)

### Hours of Operation

Monday – Friday, 7:30 a.m. – 5 p.m.



## Start Well: Mental Health Consultation for Early Care & Education-Charitable Ventures

### Program Description

Early Childhood Mental Health Consultation Services are provided to Early Childhood and Education (ECE) providers, including licensed providers, license exempt childcare centers, and licensed family childcare homes throughout Orange County. Consultation Services are designed to educate and build capacity, increase knowledge and awareness of early childhood educators to provide appropriate behavior support for those exhibiting ongoing challenging behaviors, and promote development of healthy identities in young children. The goal of these services is to improve the mental health outcomes of young developing children, infant to five years old, particularly those exhibiting problematic behaviors and are at risk of mental illness in Early Childhood and Education settings throughout Orange County. Consultation services include consultation, practice-based coaching, direct observation, and follow-up services.

### Serving

Effective management of challenging behaviors of infants and preschool children up to five (5) years old in Early Childhood and Education (ECE) settings, particularly those exhibiting problematic behaviors and are at risk of mental illness.

### Operated by

County Contracted

### Address

4041 MacArthur Blvd., Suite 510, Newport Beach, CA 92660

### Phone

(714) 559-1264

### Web Address

### Language(s)

English, Spanish

### Hours of Operation

8 am-5 pm



## Gang Reduction Intervention Partnership (GRIP)

### Program Description

In partnership with the Orange County District Attorney's office, Community Service Programs, Inc. provides Gang Reduction Intervention Partnership (GRIP) case management in schools across Orange County. GRIP provides services to 4th through 8th grade youth who display signs of being at risk for gang activity. Schools selected for service include sites with high levels of truancy, discipline issues, and gang proximity. Case-managed youth are enrolled based on individual rates of truancy, disciplinary issues, and poor academic performance in comparison to other students at the school site.

### Serving

Selected Orange County school sites based on need.

### Facility

County Contracted – Community Service Programs, Inc.

### Program Administration Address

1221 East Dyer Rd., Ste. 120, Santa Ana, CA 92705

### Phone

(949) 724-7034

### Web Address

[www.cspinc.org/Gang%20Reduction](http://www.cspinc.org/Gang%20Reduction)

### Language(s)

English, Spanish

### Hours of Operation

Monday – Friday, 8 a.m. – 5 p.m.



## Olive Crest – Parent Education Services

### Program Description

Parent Education Services are designed to foster and develop effective parenting skills; strengthen relationships with their children; promote family communication; develop problem-solving skills; and promote child growth, development and self-esteem. Parent Education Services will include parent training, group training, individual support and case management, childcare and other supportive services including transportation. These services will utilize an evidence-based curriculum aimed at reducing risk factors, build protective factors and skills with the ultimate goal of preventing the development of behavioral health conditions. Services will be available throughout the County for all Orange County residents.

### Serving

Parents, grandparents and caregivers with children from birth to 18 years, who are at risk for behavioral health conditions.

### Facility

County Contracted – Olive Crest

### Program Administration Address

2130 E. 4th St., Ste. 200, Santa Ana, CA 92705

### Phone

(714) 543-5437

### Web Address

[www.olivecrest.org](http://www.olivecrest.org)

### Language(s)

English, Spanish, Vietnamese, Farsi, Korean, Arabic

### Hours of Operation

Monday – Friday, 8 a.m. – 5 p.m.





## Orange County Center for Resiliency, Education and Wellness (OC CREW)

### Program Description

The Orange County Center for Resiliency, Education and Wellness (OC CREW) program provides early intervention services to Orange County residents between the ages of 12-25 years old who are experiencing their first episode of psychosis with symptoms that started within the last 24 months. The program provides eligibility screening and assessment, individual and family therapy, psychiatric services, psychoeducation groups, social wellness groups, and case management services. Outreach and community education opportunities to raise awareness about psychosis are also available.

### Serving

Orange County youth ages 12 to 25 years old with onset of psychotic symptoms within the last 24 months. Symptoms are not known to be caused by the effects of substance use, a known medical condition, depression, bipolar disorder or trauma.

### Operated by

County of Orange, Health Care Agency

### Address

4000 W. Metropolitan Drive, Suite 403, Orange, CA 92868

### Phone

(714) 480-5100

### Fax

(714) 836-5801

### Web Address

<http://ochealthinfo.com/bhs/about/pi/early/crew>

### Language(s)

English, Spanish, Vietnamese (interpretation in other languages is available upon request)

### Hours of Operation

Monday – Thursday, 8 a.m. – 6 p.m.; Friday, 8 a.m. – 5 p.m.



## Orange County Parent Wellness Program (OCPWP)

### Program Description

OC Parent Wellness Program- has been expanded to three “Tracks” that specialize in supporting families with children under the age of 18. This includes expectant women and their partners affected by the pregnancy or birth of a child within the past 12 months. (Track I); families with young children between the ages of 0-8 years old, who are exhibiting behavioral symptoms that may be negatively impacting their readiness for school. (Track II, formerly Connect the Tots\* Adult is now the enrolled participant); and families that have a history of Social Services involvement (Track III, formerly Stress Free Families).

### Serving

Residents of Orange County who are currently expecting or new parents, with children under the ages of 8-years old or have a history of Social Services involvement.

### Operated by

County of Orange, Health Care Agency

### Address

4000 W. Metropolitan Drive, Suite 404, Orange, CA 92868

### Phone

(714) 480-5160

### Fax

(714) 714-939-2079

### Web Address

<http://www.ochealthinfo.com/gov/health/bhs/about/pi/early/pwp.asp>

### Language(s)

English, Portuguese, Spanish and Vietnamese  
(interpretation in other languages available upon request)

### Hours of Operation

Monday – Thursday, 8 a.m. – 6 p.m.; Friday, 8 a.m. – 5 p.m.



## School Based Violence Prevention Education (SBVPE)

### Program Description

The Orange County Department of Education provides School Based Violence Prevention Education (SBVPE) in schools across Orange County with collaboration among community resources and partners. Violence prevention training and services are intended to reduce school failure and violence in schools, neighborhoods and families. SBVPE programs offer the following three components:

- **Safe and Healthy Lifestyles:** includes programs designed to provide a continuum of prevention and intervention support to provide a safe and healthy environment for youth.
  - **Safe From The Start:** provides essential knowledge specific to the brain development of young children. This sub-component disseminates scientific research based on how exposure to violence, whether through direct physical impact or witnessing violence, can impact the neurological development of young children. Such exposure can negatively compromise learning and normal cognitive development, as well as social and emotional development.
  - **Crisis Response Network (CRN):** provides services that are available for public, private and charter schools. CRN coordinates, manages and mobilizes a roster of trained crisis responders who are ready and can assemble to assist schools and the community in times of emergency or need. CRN is a resource for schools and the community for situations that may be a threat and/or crisis to student(s).
- **Media Literacy:** provides training and support for students, parents and school staff in areas related to the use of digital media, bullying, and cyber-bullying. Programs are designed to decrease opportunities for digital harassment, bullying and exploitation at the student level.
- **Conflict Resolution:** provides support to students and parents in the development of conflict resolution and peer mediation skills. Training and skill-building activities are available for students to learn and develop needed skills related to solving conflicts at the school level.

### Serving

All Orange County residents, students, schools and community partners.



<b>Operated by</b>	County Contracted – Orange County Department of Education
<b>Program Administration Address</b>	200 Kalmus Dr., Costa Mesa, CA 92626
<b>Phone</b>	(714) 327-1068
<b>Web Address</b>	<a href="http://www.ocde.us/PEI/Pages/default.aspx">www.ocde.us/PEI/Pages/default.aspx</a>
<b>Language(s)</b>	English in all programs. Spanish and Vietnamese are offered in some programs.
<b>Hours of Operation</b>	Monday – Friday, 9 a.m. – 5 p.m.



## The Priority Center-School Readiness

### Program Description

School Readiness Collaborative serves families with children from birth to age eight, who are exhibiting behavioral problems and emotional distress, which, puts them at increased risk of developing mental illness and failing in school. Prior to FY 18-19, services were provide by The Priority Center (TPC), previously known as Child Abuse Prevention Center (CAPC) - School Readiness program with collaboration with the County program-Connect the Tots. For FY 18-21, the scope of services was modified to provide School Readiness services collaboratively between the two providers, Children's Bureau and TPC. School Readiness providers will refer participants needing additional services to the County program.

### Serving

Children ages zero to eight and their families living in Orange County, who are at risk for developing mental illness due to social/emotional deficits or who are displaying early signs of emotional, behavioral, and/or mental instability that would impair the child's ability to successfully transition and participate in school.

### Operated by

County Contracted – The Priority Center

### Program Administration Address

1940 E. Deere Street, Suite 100, Santa Ana, CA 92705

### Phone

(714) 543-4333 FAX (714) 543-4398

### Web Address

[www.theprioritycenter.org](http://www.theprioritycenter.org)

### Language(s)

English, Spanish, Vietnamese, and Arabic

### Hours of Operation

Monday – Friday, 8 a.m. – 5 p.m. with the capability to provide services in the evening hours and on the weekends.



## Early Intervention Services for Older Adults

### Program Description

Early Intervention Services for Older Adults serves adults 60 years of age and older who are at risk of or are experiencing the early onset of a behavioral health condition. The program targets unserved or underserved populations and individuals who have not sought out services due to social isolation, stigma associated with behavioral health conditions, or cultural or linguistic barriers. The program provides trained, culturally and linguistically competent case managers and life coaches who provide services in the homes of participants. Participants receive a comprehensive assessment and case management services. The program facilitates linkages to other behavioral health, medical and community resources. Other services include educational/skill building workshops, support groups, recreational activities and transportation support services.

### Serving

Orange County residents age 60 or older.

### Operated by

County Contracted – Orange County Child Abuse Prevention Center

### Program Administration

#### **Council on Aging Southern California**

**Address:** 2 Executive Circle, #175, Irvine, CA 92614

**Web Address:** [www.coaoc.org](http://www.coaoc.org)

**Phone:** (714) 479-0107

#### **Hours of Operation:**

Administration: Monday – Friday, 8 a.m. – 5 p.m.

Direct service hours: Monday – Friday, 8 a.m. – 5 p.m., and nights/weekends based on service.

#### **Multi Ethnic Collaborative of Community Agencies (MECCA)**

**Address:** 1505 E. 17th St., Ste. 123, Santa Ana, CA 92705

**Web Address:** [www.ocmecca.org](http://www.ocmecca.org)

**Phone:** (714) 202-4750

#### **Hours of Operation:**

Administration: Monday – Friday, 9 a.m. – 5 p.m.

Direct service hours: Monday – Friday, 8 a.m. – 5 p.m., and nights/weekends based on service.

### Language(s)

English, Spanish, Vietnamese, Farsi, Korean, Arabic





## Warmline Network Services

### Program Description

Warmline Network Services is telephone-based, non-crisis support for anyone struggling with mental health and/or substance abuse issues. Staff providing services have been through a similar journey, either as a mental health or substance abuse services consumer or as a family member of an individual receiving these services. In addition, the

### Serving

All Orange County residents

### Operated by

County Contracted – NAMI Orange County

### Program Administration Address

2030 E. 4<sup>th</sup> Street, Suite A-221, Santa Ana, CA 92705

### Phone

(877) 910-WARM or (714) 991-6412, text: (714)991-6412,  
Livechat: [www.namioc.org](http://www.namioc.org)

### Web Address

[www.namioc.org](http://www.namioc.org)

### Language(s)

English, Spanish, Vietnamese, Farsi and other languages

### Hours of Operation

Monday – Friday, 9 a.m. – 3 a.m.; Saturday and Sunday, 10 a.m. – 3 a.m.



## Survivor Support Services

### Program Description

The Survivor Support Services program provides support for those who have lost a loved one to suicide, and educates the community on suicide prevention and intervention. These services include outreach, crisis support, bereavement groups, individual support, and training. Through a support group model, this program offers emotional support and provides education and information regarding the personal and social impact of suicide. The service is also designed to improve family functioning/communication, identify and understand the factors that promote a survivor's resilience and strength, provide bereavement services and support, and address issues of stigma and shame.

### Serving

All Orange County residents who are family members/loved ones of those who have attempted or died by suicide.

### Facility

County Contracted – Didi Hirsch Mental Health Services

### Program Administration Address

2000 E. 4th St., Ste. 110, Santa Ana, CA 92705

### Phone

(714) 547-0885

### Web Address

[www.didihirsch.org/suicide-prevention/survivor-support-services-orange-county](http://www.didihirsch.org/suicide-prevention/survivor-support-services-orange-county)

### Language(s)

English, Spanish, Vietnamese, Farsi and other languages as needed

### Hours of Operation

Administration: Monday – Friday, 8 a.m. – 5 p.m., and by appointment (group and/or individual hours are determined by participating members)



## Alcohol and Other Drug (AOD) Prevention Team

### Program Description

The Alcohol and Other Drug Prevention Team provides staff training, parent education, school-based curriculum, community education and outreach to increase awareness of, prevent alcohol, and drug use/abuse.

### Serving

Orange County residents

### Operated by

County of Orange, Health Care Agency

### Address

4000 W. Metropolitan Drive, Suite #400, Orange, CA 92868

### Phone

(714) 954-2900

### Fax

(714) 954-2901

### Web Address

<http://ochealthinfo.com/bhs/about/pi>

### Language(s)

English, Spanish (interpretation for other languages is available upon request)

### Hours of Operation

Monday – Friday, 8 a.m. – 5 p.m. (some evening hours)



## Alcohol and Other Drug Abuse Prevention Services

### Program Description

The Orange County Department of Education's Alcohol and Other Drug (AOD) Abuse Prevention Services program uses evidence-based curriculum to provide teacher, parent, and student workshops and groups focused on AOD education and prevention strategies. The goal of these activities is to reduce alcohol and drug use by improving protective factors, identifying high-risk behaviors, and enhancing family relationships to increase connectedness of youth to their families, schools, and community.

### Serving

Children/youth, parents and school staff affiliated with pre-selected schools in Orange County.

### Operated by

County Contracted – Orange County Department of Education

### Program Administration Address

200 Kalmus Dr., Costa Mesa, CA 92626

### Phone

(714) 327-1068

### Web Address

<http://ocde.us/PAL/Pages/Alcohol-Tobacco-Drug-Prevention.aspx>

### Language(s)

English, Spanish

### Hours of Operation

Monday – Friday, 8 a.m. – 5 p.m.



## Screening, Brief Intervention and Referral to Treatment (SBIRT)

### Program Description

Two licensed Master's level clinicians are stationed at UCI Family Health Centers in Santa Ana and Anaheim to provide screening for substance use disorders, depression, anxiety, intimate partner violence and /or trauma that may be impacting the overall general health of the patient. Patients are provided with brief interventions such as Motivational Interviewing techniques to engage patients into services and provide appropriate referrals as indicated by the positive screens. Outpatient services provided by SBIRT include follow-up phone calls to encourage linking and/or address barriers that affect successful linkage to ancillary services.

### Serving

Adults and older adults in Central and North Orange County.

### Operated by

County of Orange, Health Care Agency

### Address

UC Irvine Family Health Centers: 800 North Main St., Santa Ana, 92701

### Phone

(714) 480-2439

### Fax

(714) 491-4401

### Web Address

<http://ochealthinfo.com/bhs/about/pi/mhsa>

### Language(s)

English, Spanish

### Hours of Operation

Monday – Thursday, 8 a.m. – 5 p.m.; Friday, 8 a.m. – 4 p.m.





# CRISIS SERVICES

## Adult & Older Adult Behavioral Health (AOABH) Exodus Crisis Stabilization Unit

### Program Description

Exodus CSU will provide psychiatric crisis stabilization services twenty-four (24) hours a day providing a viable option to the default presentation to emergency departments for persons in behavioral health crisis. Crisis stabilization services include: psychiatric assessment, physical screening, collateral history, therapy, crisis intervention, medication services, education, nursing assessment, peer specialist services, coordination of referrals to continuing care and emergency housing, post discharge planning and facilitation of transfer of individuals to inpatient treatment facilities when clinically appropriate and indicated. Exodus CSU will serve individuals presenting in Orange County who are 13 years and older who are experiencing behavioral health crisis, may have co-occurring disorders, are at risk of hospitalization and cannot wait until regularly scheduled appointments. There are 16 beds for adults and eight for adolescents 13 years and over.

### Serving

Orange County residents who are 13 years and older.

There are 16 beds for adults and eight for adolescents 13 years and over.

### Operated by

County of Orange, Health Care Agency Contracted--Exodus Recovery

### Address

265 S. Anita Street, Orange, CA 92868

### Phone

(714) 410-3500

Fax: (714) 410-3526

### Web Address

### Language(s)

English, additional languages TBD

### Hours of Operation

24 hours a day, 7 days a week, 365 days a year



## Adult & Older Adult Behavioral Health (AOABH) College Hospital Crisis Stabilization Unit

### Program Description

College Hospital Crisis Stabilization Unit (CSU) provides psychiatric crisis stabilization services twenty-four hours a day providing a viable option to the default presentation to emergency departments for persons in behavioral health crisis. Crisis stabilization services include: psychiatric assessment, physical screening, collateral history, therapy, crisis intervention, medication services, educations, nursing assessment, peer specialist services, coordination of referrals to continuing care and emergency housing, post discharge planning and facilitation of transfer of individuals to inpatient treatment facilities when clinically appropriate and indicated.

### Serving

College Hospital CSU serves Orange County residents 18 years and older who are experiencing behavioral health crises, may have no-occurring disorders, are at risk of hospitalization and cannot wait until regularly scheduled appointments

### Operated by

County of Orange, Health Care Agency

### Address

301 Victoria Street, Costa Mesa, CA 92627

### Phone

(949) 574-3328

Fax: (714) 426-8160

### Web Address

### Language(s)

English, Spanish, Korean, Farsi

### Hours of Operation

24 hours a day, 7 days a week, 365 days a year





## Adult & Older Adult Behavioral Health (AOABH) AMHS TREEhouse Crisis Residential Program

### Program Description

The program provides short-term crisis residential services to meet the needs of adults in a behavioral health crisis and who may be at risk of psychiatric hospitalization. The program emulates a home-like environment in which intensive and structured psychosocial recovery services are offered 24 hours a day, 7 days a week. Stays are voluntary and average 7-14 days. The program is person-centered, recovery oriented, and focuses on having individuals take responsibility for themselves and reintegrate into the community. Services include crisis intervention, development of a Wellness Recovery Action Plan (WRAP), group education and rehabilitation, assistance with self-administration of medications, case management and discharge planning.

### Serving

Orange County residents between ages of 18 and 59 and individuals over 60 years of age whose needs are compatible with those of other clients if they require the same level of care and supervision and all Community Care Licensing requirements can be met. Referrals are coordinated by our Crisis Assessment Team.

### Operated by

County of Orange, Health Care Agency

### Address

2026 W. Beacon Ave, Anaheim, CA 92804

### Phone

(657) 276-7030

Fax: (714) 426-8160

### Web Address

[www.telecarecorp.com/treehouse](http://www.telecarecorp.com/treehouse)

### Language(s)

English, Spanish, Korean, Farsi

### Hours of Operation

24 hours a day, 7 days a week, 365 days a year



## Adult & Older Adult Behavioral Health AMHS Prevention Center In-Home Crisis Stabilization

### Program Description

The Adult In-Home Crisis Stabilization (AIHCS) Program will consist of Family Stabilization Team that will provide intensive, in-home crisis stabilization services to persons who have been assessed as being at imminent risk of psychiatric hospitalization and/or out-of-home placement, but are capable of avoiding such outcomes if provided necessary and appropriate support. The program will provide services 24 hours a day, seven (7) days a week, and 365 days a year. Services will be mobile and short-term in nature, providing individuals and/or their families and/or immediate support networks access to an array of behavioral health services. These services can include evidence-based practices; crisis intervention assessments, individual and family therapy, case-management services, collateral services, referral and linkage services, and treatment focusing on helping the individual, family and/or immediate support network develop coping skills to avoid future crises. Assistance with benefit acquisition and treatment planning will also be provided. The programs will engage the individual and/or family/identified support network in the home or a setting that the individual feels comfortable in, whenever possible. Services will be crisis focused with a target of intensive three to six weeks treatment episodes to address and stabilize the current behavioral health crisis.

### Serving

Orange County residents between the ages of 18-59, which includes Transitional Age Youth (TAY), who are experiencing a behavioral health crisis and at risk of hospitalization and/or out of home placement. Adults over 60 years old whose needs are compatible with those of other individuals may be included in the target population if they require the same level of care and supervision.

### Operated by

County of Orange, Health Care Agency

### Address

1940 E. Deere St., Suite 101, Santa Ana, CA 92705

### Phone

(714) 955-6594

### Fax

(714) 619-6364

### Web Address



**Language(s)**

English, Spanish, Vietnamese, Korean, Arabic and Farsi

**Hours of Operation**

24 hours a day, 7 days a week, 365 days a year



## Children and Youth Behavioral Health Crisis Assessment Team

### Program Description

The Children and Youth Behavioral Health Crisis Assessment Team is comprised of psychologists, social workers, marriage and family therapists, as well as a rotation of behavioral health Service Chiefs who provide crisis evaluations for minors to determine if psychiatric hospitalization is required or if the child/youth can be safely referred to a lower level of care. Team members receive referrals from a variety of sources that include: hospital emergency departments, police departments, County-operated and contract clinics, schools, group homes, emergency shelters, reporting centers, the Child Abuse Services Team, Juvenile Hall, Probation Department, the Back-Up for Court Evaluation and Guidance Unit, and the Orangewood Children and Family Center. They will also visit individual homes with the support of local law enforcement.

### Serving

This program serves Orange County residents (minors) under the age of 18.

### Operated by

County of Orange, Health Care Agency

### Address

N/A – mobile service

### Phone

(866) 830-6011

### Fax

(714) 935-8492

### Web Address

All there [http://ochealthinfo.com/bhs/about/cys/crisis\\_services](http://ochealthinfo.com/bhs/about/cys/crisis_services)

### Language(s)

English, Spanish (additional translation services available)

### Hours of Operation

24 hours a day, 7 days a week, 365 days a year



## Children's Crisis Residential Program *Wayfinders*

### Program Description

The Wayfinders Children's Crisis Residential Program offers a temporary, short-term, crisis stabilization home to adolescents who are in crisis with the goal of reducing at-risk behaviors, peer and family problems, out-of-home placement, and involvement in the child welfare and juvenile justice system among adolescents. Admissions are voluntary and available on a 24/7 basis depending on bed availability. The program facilitates/educates coping strategies and promotes resiliency in diverse youth and their families. Staff involved in evaluating possible inpatient admissions, or the Family Stabilization Teams, identify youth who do not require hospitalization but who will benefit from additional assessment and therapeutic respite.

### Serving

Orange County residents ages 13 to 17. Referrals are made only by our Children and Youth Behavioral Health clinical staff or Crisis Assessment Team members.

### Operated by

County Contracted – Community Service Programs

### Address

Huntington Beach and Laguna Beach locations.

### Phone

(949) 494-4311

### Fax

(949) 497-4861

### Web Address

[www.wayfindersinc.org](http://www.wayfindersinc.org)

### Language(s)

English, Spanish

### Hours of Operation

24 hours a day, 7 days a week, 365 days a year



## **Crisis Prevention Hotline**

### ***Didi Hirsch Mental Health Services***

#### **Program Description**

The Crisis Prevention Hotline provides toll-free, around-the-clock, immediate, confidential, culturally and linguistically appropriate suicide prevention services over the telephone to anyone who is in crisis or experiencing suicidal thoughts.

#### **Serving**

Orange County residents of all ages.

#### **Operated by**

County Contracted – Didi Hirsch Mental Health Services

#### **Address (Administrative Offices)**

4760 S. Sepulveda Blvd., Culver City, CA 90230

#### **Phone**

(877) 7-CRISIS or (877) 727-4747

#### **Web Address**

[www.didihirsch.org/orange-county-services](http://www.didihirsch.org/orange-county-services)

#### **Language(s)**

English and Spanish and Korean (translation of other languages is available through a multi-language line upon request)

#### **Hours of Operation**

24 hours a day, 7 days a week, 365 days a year



## Adult & Older Adult Behavioral Health (AOABH) Crisis Stabilization Unit Vuity

### Program Description

Psychiatric and Basic Medical Services at the CSU are primarily designed to provide timely and effective crisis intervention and stabilization for those accessing services at the CSU, including evaluation, assessment, medication services, identifying appropriate disposition, collaborating with clients/families and working in coordination with County CSU nursing, clinicians, Peer Support, and Office Support staff to provide recovery-oriented care.

### Serving

Adults ages 18 and older, referred or presenting themselves to the CSU who are experiencing behavioral health emergencies that cannot wait for their regularly scheduled appointments.

### Operated by

County Contract

### Address

1030 W. Warner, Santa Ana, CA 92707

### Phone

(714) 834-6900

### Fax

(714) 850-1066

### Web Address

[www.ochealthinfo.com/csu](http://www.ochealthinfo.com/csu)

### Language(s)

All threshold languages

### Hours of Operation

24 hours a day, 7 days a week, 365 days a year



## Transitional Age Youth (TAY) Crisis Residential Program South Coast Children's Society

### Program Description

A six-bed residential program for transitional age youth (TAY) who have experienced a mental health crisis, but do not meet the criteria for inpatient hospitalization. The program provides assistance with stabilization and linkage to more long-term support.

### Serving

Orange County residents ages 18 to 25 in need of service and referred by County staff.

### Operated by

County Contracted – South Coast Children's Society

### Address

3611 S. Harbor Blvd., Ste. 100, Santa Ana, CA 92704

### Phone

(714) 966-5338

### Fax

(714) 966-5339

### Web Address

[www.sccskids.org](http://www.sccskids.org)

### Language(s)

English, Spanish, Vietnamese

### Hours of Operation

24 hours a day, 7 days a week, 365 days a year







# OUTPATIENT PROGRAMS

## Children and Youth Behavioral Health Outpatient Clinics

### Program Description

Children and Youth Behavioral Health Services (CYBH) provides a broad range of outpatient services for behaviorally, emotionally or mentally disordered children and adolescents, which include evaluation, therapy, medication monitoring, crisis intervention, and collateral services to parents and families. CYBH provides information for hospitalization, consults with local education agencies and other community programs, coordinates with private and public services, and provides case management for Medi-Cal beneficiaries placed in psychiatric hospitals or other 24-hour settings.

### Serving

Children, youth and school-based programs. Eligibility includes Medi-Cal.

### Operated by

County of Orange, Health Care Agency

### Web Address

<http://ochealthinfo.com/bhs/about/cys/clinics>

### Location

#### Aliso Viejo Clinic

**Address:** 5 Mareblu, Ste. 100, Aliso Viejo, CA 92656

**Phone:** (949) 643-6900

**Fax:** (949) 643-6931

**Hours of Operation:** Monday – Friday, 8 a.m. – 5 p.m.

**Languages(s):** English, Spanish, Korean

#### Costa Mesa Clinic

**Address:** 2801 S. Bristol Street., Costa Mesa, CA 92626

**Phone:** (714) 850-8408

**Fax:** (714) 850-8587

**Hours of Operation:** Monday – Friday, 8 a.m. – 5 p.m.

**Language(s):** English, Spanish, Vietnamese

#### Dana Point Clinic

**Address:** 24242 La Cresta, Dana Point, CA 92629 (located at Richard Henry Dana Elementary School)

**Phone:** (949) 248-2228

**Fax:** (949) 248-2230

**Hours of Operation:** Monday – Friday, 8 a.m. – 5 p.m.

**Languages(s):** English, Spanish



**Laguna Beach Clinic**

**Address:** 21632 Wesley Dr., Laguna Beach, CA 92651

**Phone:** (949) 499-5346

**Fax:** (949) 499-1594

**Hours of Operation:** Monday – Friday, 8 a.m. – 5 p.m.

**Language(s):** English, Spanish

**Placentia Clinic**

**Address:** 377 E. Chapman Ave., Ste. 110, Placentia, CA 92870

**Address:** (714) 577-5400

**Fax:** (714) 577-5450

**Hours of Operation:** Monday – Friday, 8 a.m. – 5 p.m.

**Languages(s):** English, Farsi, Korean, Spanish, Vietnamese

**Santa Ana Clinic**

**Address:** 1200 North Main St., Ste. 500, Santa Ana, CA 92701

**Phone:** (714) 480-6600

**Fax:** (714) 568-4527

**Hours of Operation:** Monday – Thursday, 8 a.m. – 8 p.m.;  
Friday, 8 a.m.-5 p.m.

**Language(s):** English, Farsi, French, Spanish

**Westminster Clinic**

**Address:** 14140 Beach Blvd., Westminster, CA 92683

**Phone:** (714) 896-7556

**Fax:** (714) 896-7564

**Hours of Operation:** Monday – Friday, 8 a.m. – 5 p.m.

**Languages(s):** English, Mandarin, Spanish, Vietnamese



## Child Abuse Services Team (CAST)

### Program Description

Children and Youth Behavioral Health Services County staff work with a team consisting of medical, social work, and legal staff to provide assessment and treatment to victims of sexual abuse.

### Serving

Orange County children and youth. All referrals (including Medi-Cal) are made by child protective agencies.

### Operated by

County of Orange, Health Care Agency

### Address

401 The City Dr., Orange, CA 92868

### Phone

(714) 935-7545

### Fax

(714) 935-6845

### Web Address

<http://ssa.ocgov.com/cast/>

### Language(s)

English, Spanish (provision for other languages as necessary)

### Hours of Operation

Monday – Friday by appointment, 8 a.m. – 5 p.m.



## Olive Crest Outpatient - Costa Mesa

### Program Description

Olive Crest's Mental Health staff provide special services such as crisis intervention, therapy, psychiatric assessments, medication management, and Therapeutic Behavioral Services (TBS)

### Serving

Orange County children and youth ages, 0 – 21.

### Operated by

County Contract- Olive Crest

### Address

4275 Victoria Street, Suite 2M, Costa Mesa, CA 92727

### Phone

(714) 361-4380

### Fax

(714) 361-4376

### Web Address

<http://www.olivecrest.org>

### Language(s)

English, Spanish (provision for other languages as necessary)

### Hours of Operation

Monday – Friday, 8 a.m. – 5 p.m.



## Supporting Survivors

### Program Description

This program is for individuals of all age groups who are victims or witnesses of crime and/or mass violence events. Outpatient services consist of screening, assessment, counseling groups (support and educational), case management, referral and linkages and community outreach. Referrals are accepted from all County and community agencies, as well as self-referrals. A Master's level clinician will assist in providing participants with identified needs and appropriate services.

### Serving

Children, transitional age youth, adults, and older adults who are Orange County residents.

### Created by

County of Orange, Health Care Agency

### Address

2035 E. Ball Rd., Ste. 100C, Anaheim, CA 92806

### Phone

(714) 517-6100

### Fax

(714) 517-6139

### Web Address

[www.ochealthinfo.com/bhs/ss](http://www.ochealthinfo.com/bhs/ss)

### Language(s)

English

### Hours of Operation

Monday – Thursday, 8:30 a.m. – 6 p.m.; Friday, 8:30 a.m. – 5 p.m.



## Child Guidance Center, Inc.

### Program Description

Child Guidance Center, Inc. is a non-profit organization dedicated to empowering children and their parents to achieve their potential as loving, responsible families. The program provides outpatient comprehensive diagnostic and treatment services to children and families whose relationships and personal growth are impaired by emotional and behavioral problems.

### Serving

Children and youth ages 0-21. Eligibility includes Medi-Cal.

### Operated by

County Contracted – Child Guidance Center, Inc.

### Web Address

[www.childguidancecenter.com](http://www.childguidancecenter.com)

### Location

#### Buena Park

**Address:** 6301 Beach Blvd., Ste. 245, Buena Park, CA 90621

**Phone:** (714) 736-0231

**Fax:** (714) 736-0895

**Hours of Operation:** Monday – Thursday, 8 a.m. – 7 p.m.;  
Friday, 8 a.m.-5 p.m.

**Language(s):** English, Farsi, Korean, Spanish

#### Fullerton

**Address:** 680 Langsdorf Dr., Ste. 200, Fullerton, CA 92831

**Phone:** (714) 871-9264

**Fax:** (714) 871-5032

**Hours of Operation:** Monday – Thursday, 8 a.m. – 7 p.m.;  
Friday, 8 a.m.-5 p.m.

**Languages(s):** English, Spanish

#### Santa Ana

**Address:** 525 N. Cabrillo Park Dr., Ste. 300, Santa Ana, CA 92701

**Phone:** (714) 953-4455

**Fax:** (714) 542-2793

**Hours of Operation:** Monday – Thursday, 8 a.m. – 7 p.m.;  
Friday, 8 a.m.-5 p.m.

**Languages(s):** English, Spanish



## Pathways Community Services

### Program Description

Pathways Community Services (PCS) provides a broad range of outpatient services for behaviorally, emotionally or mentally disordered children, adolescents, and young adults who have Medi-Cal. PCS services can include evaluation, therapy, medication, crisis intervention, one-on-one mentoring, therapeutic behavioral services (TBS), psychological testing, specialized services in foster care and group homes, and collateral services to parents and families. PCS is unique, as services can be provided in the clinic, the client's own home, or in community based settings versus institutional care.

### Serving

Children and youth ages 0-21 and families. Eligibility includes Medi-Cal.

### Operated by

County Contracted – Pathways Community Services

### Web Address

[www.pathways.com](http://www.pathways.com)

### Location

#### Anaheim

**Address:** 711 E. Ball Rd., Ste. 201, Anaheim, CA 92805

**Phone:** (714) 254-8473      **Fax:** (714) 254-8480

**Hours of Operation:** Monday – Friday, 8 a.m. – 5 p.m.

**Language(s):** English, Spanish

#### Costa Mesa

**Address:** 1503 South Coast Dr., Ste. 202, Costa Mesa, CA 92626

**Phone:** (949) 515-5440      **Fax:** (949) 515-5444

**Hours of Operation:** Monday – Friday, 8:30 a.m. – 5:30 p.m.

**Languages(s):** English, Farsi, Spanish

#### Garden Grove

**Address:** 12966 Euclid St., Ste. 280, Garden Grove, CA 92840

**Phone:** (714) 823-4770      **Fax:** (714) 823-4777

**Hours of Operation:** Monday – Friday, 8:30 a.m. – 5:30 p.m.

**Languages(s):** English, Spanish, Vietnamese

#### Santa Ana

**Address:** 525 N. Cabrillo Park Dr., Ste. 300, Santa Ana, CA 92701

**Phone:** (714) 953-4455      **Fax:** (714) 542-2793

**Hours of Operation:** Monday – Thursday, 8 a.m. – 7 p.m.; Friday, 8 a.m. – 5 p.m.

**Languages(s):** English, Spanish





## South Coast Children's Society

### Program Description

South Coast Children's Society provides shelter, care, therapy and essential support services for abused, neglected and underprivileged children and youth, and their struggling families. Outpatient services include individual, group, and family therapy, as well as psychiatric and medication support services. South Coast Children's Society also provides therapeutic behavioral services (TBS).

### Serving

Children and youth ages 0 to 21 in West Orange County (Cypress, Huntington Beach, Los Alamitos, Midway City, Seal Beach, Stanton, Sunset Beach and Westminster). Eligibility includes Medi-Cal and third party insurance.

### Operated by

County Contracted – South Coast Children's Society

### Address

2124 Main St., Ste. 165, Huntington Beach, CA 92648

### Phone

(714) 536-0077

### Fax

(714) 536-0071

### Web Address

[www.sccskids.org](http://www.sccskids.org)

### Language(s)

English, Spanish, Arabic, Vietnamese

### Hours of Operation

Monday – Friday, 8 a.m. – 5 p.m.



## Western Youth Services

### Program Description

Western Youth Services is staffed by a dedicated team of mental health professionals who understand the unique concerns of children, adolescents and families. Comprehensive outpatient mental health services are provided at clinics strategically located throughout the county.

### Serving

Children and youth ages 0-21. Eligibility includes Medi-Cal.

### Operated by

County Contracted – Western Youth Services

### Web Address

[www.westernyouthservices.org](http://www.westernyouthservices.org)

### Location

#### Anaheim

**Address:** 505 N. Euclid St., Ste. 300, Anaheim, CA 92801

**Phone:** (714) 871-5646 **Fax:** (714) 817-7368

**Hours of Operation:** Monday – Thursday, 8 a.m. – 7 p.m.;  
Friday, 8 a.m. – 5 p.m.

**Languages(s):** English, Spanish

#### Fountain Valley

**Address:** 18350 Mount Langley St., Ste. 206, 215 and 216,  
Fountain Valley, CA 92708

**Phone:** (714) 378-2620 **Fax:** (714) 378-2631

**Hours of Operation:** Monday – Thursday, 8 a.m. – 7 p.m.;  
Friday, 8 a.m. – 5 p.m.

**Language(s):** English, Spanish, Vietnamese

#### Mission Viejo

**Address:** 26137 La Paz Rd., Ste. 230 Euclid St., Ste. 280, Mission  
Viejo, CA 92691

**Phone:** (949) 595-8610 **Fax:** (949) 595-0296

**Hours of Operation:** Monday – Thursday, 8 a.m. – 7p.m.;  
Friday, 8 a.m. – 5 p.m.

**Languages(s):** English, Farsi, Spanish

#### Santa Ana

**Address:** 200 W. Santa Ana Blvd., Ste. 801, Santa Ana, CA 92701

**Phone:** (714) 704-5900 **Fax:** (714) 978-3419

**Hours of Operation:** Monday – Friday, 8 a.m. – 5 p.m.

**Languages(s):** English, Spanish



## Juvenile Recovery Court (JRC)

### Program Description

A collaboration between Children and Youth Behavioral Health Services (CYBH), Probation, Collaborative Court Full Service Partnership and Juvenile Court for youth who have committed substance abuse related offenses. CYBH County staff provide assessments for mental health and substance abuse disorders as well as individual, collateral, and group therapy to address those disorders.

### Serving

Orange County children and youth referred by Juvenile Court.

### Operated by

County of Orange, Health Care Agency

### Address

301 The City Dr. South, Orange, CA 92868

### Phone

(714) 935-6363

### Fax

(714) 935-8112

### Web Address

<http://ocgov.com/gov/probation/ocijs>

### Language(s)

English, Spanish, Vietnamese

### Hours of Operation

Monday – Friday, 8 a.m. – 5 p.m.



## Wayfinders Families First

### Program Description

The Wayfinders Families First program consists of a series of programs designed to treat at risk, severely disturbed youth between the ages of 6 and 21 who are experiencing behavioral/emotional problems in their homes or school and may be in jeopardy of being removed from their current placement. Outpatient services include an integrated, therapeutic after-school program as well as individual, family, and group therapy and psychiatric and medication support services.

### Serving

Children and youth ages 6–21 in East Orange County (El Modena, Lemon Heights, Orange, Santa Ana, Tustin and Villa Park). Eligibility includes Medi-Cal.

### Operated by

County Contracted – Community Service Programs

### Address

2130 E. 4th St., Ste. 150, Santa Ana, CA 92705

### Phone

(714) 558-3807

### Fax

(714) 558-7462

### Web Address

[www.wearewayfinders.org](http://www.wearewayfinders.org)

### Language(s)

English, Spanish

### Hours of Operation

Monday – Thursday, 8:30 a.m. – 6:30 p.m.;  
Friday, 8:30 a.m. – 5 p.m.



## Administrative Services Organization (ASO)

### Program Description

The Administrative Services Organization (ASO) provides access to mental health services for Orange County Medi-Cal beneficiaries. These services include a 24-hour Access Line and referral to outpatient mental health providers. Additionally, the ASO provides ongoing development and maintenance of the Mental Health Plan Network of Providers that meet the geographical, cultural and linguistic needs of the community.

### Serving

Adult Orange County Medi-Cal beneficiaries who seek mental health services for a mental illness that is causing impairment in their community functioning.

### Operated by

County Contracted – Beacon Health Strategies

### Program Administration Address

N/A

### Phone

(800) 723-8641

### Fax

(714) 450-1593

### Web Address

<http://www.ochealthinfo.com/bhs/aso>

### Language(s)

English, Spanish, Vietnamese, Farsi (interpretation for other languages is available upon request)

### Hours of Operation

24 hours a day, 7 days a week, telephone access



## Adult and Older Adult Behavioral Health Services

### Wel-Mor Psychology Group, Inc.

#### Program Description

Outpatient and Intensive Outpatient services that include substance use treatment, assessment of placement and continuing needs, individual and group therapy, case management, linkage and coordination of care, and collaboration of goals with clients.

#### Serving

Adults and adolescents 12 to 17 years. Drug Medi-Cal beneficiaries entering treatment must meet medical necessity and level of care determination based on the criteria of the American Society of Addiction Medicine (ASAM).

#### Operated by

County Contract – Wel-Mor Psychology Group, Inc.

#### Address

1440 N. Harbor Blvd., Suite 725, Fullerton, CA 92835  
4120 Birch Street, Suite 131, Newport Beach, CA 92660

#### Phone

(714) 540-9070

#### Fax

(714) 884-4347

#### Web Address

[www.welmortreatment.com](http://www.welmortreatment.com)

#### Language(s)

English

#### Hours of Operation

Monday – Friday, 8 a.m. – 9 p.m.; Saturday 9 a.m. – 12 p.m.



## Adult & Older Adult Behavioral Health (AOABH) Outpatient Clinics – (Access Point)

### Program Description

Adult and Older Adult Behavioral Health Services provides outpatient recovery oriented behavioral health services which emphasize individual needs, strengths, choices, and involvement in service planning and implementation. Outpatient services include assessment, evaluation, collateral therapy, individual and group therapy, substance abuse treatment, medication support, rehabilitation, linkage and consultation, placement, plan development, crisis intervention and specialized residential services. The Santa Ana, Westminster or Anaheim County Clinics also provide integrated community services (ICS) which addresses both physical and mental health care needs.

### Serving

Adults who have a serious and persistent mental illness, may have a co-occurring substance use disorder, and exhibit a significant impairment in their ability to function in the community. Individuals eligible for the program typically do not have access to other resources, and may have a history of psychiatric hospitalization.

### Operated by

County of Orange, Health Care Agency

### Address

Anaheim: 2035 E. Ball Rd., Ste. 200, Anaheim, CA 92806  
 Aliso Viejo: 5 Mareblu, Aliso Viejo, CA, 92656  
 Santa Ana: 1200 North Main St., Ste. 200,  
 Santa Ana, CA 92701  
 Westminster: 14140 Beach Blvd., Ste. 223,  
 Westminster, CA 92683

### Phone and Fax

Anaheim: Phone: (714) 517-6300 Fax: (714) 517-6306  
 Aliso Viejo: Phone: (949) 643-6930 Fax: (949) 643-6944  
 Santa Ana: Phone: (714) 480-6767 Fax: (714) 568-4362  
 Westminster: Phone: (714) 896-7566 Fax: (714) 896-7408

### Web Address

[www.ochealthinfo.com/bhs/about/aoabh/clinics](http://www.ochealthinfo.com/bhs/about/aoabh/clinics)

### Language(s)

English, Spanish, Vietnamese, Farsi, Korean (interpretation of other languages is available upon request)

### Hours of Operation

Monday – Thursday, 8 a.m. – 6 p.m.; Friday, 8 a.m. – 5 p.m.



## Adult & Older Adult Behavioral Health (AOABH) Pacific Asian Unit (PAU) Clinic – (Access Point)

### Program Description

The Pacific Asian Unit Outpatient Clinic serves primarily Vietnamese monolingual individuals, age 18 years and older who are living with a chronic and persistent mental illness, may have a co-occurring substance abuse disorder, and who are experiencing multiple significant impairments in their community functioning. The clinic provides assessment, linkage, individual and group therapy, case management, medication support, substance abuse treatment, and a variety of recovery services for adults.

### Serving

Pacific Asian adults, who have a serious and persistent mental illness, may have a co-occurring substance abuse disorder, and exhibit an impairment in their ability to function in the community. Individuals eligible for the program typically do not have access to other resources, and a history of psychiatric hospitalization.

### Operated by

County of Orange, Health Care Agency

### Address

14140 Beach Blvd., Ste. 200, Westminster, CA 92683

### Phone

(714) 896-7574

### Fax

(714) 896-7332

### Web Address

[www.ochealthinfo.com/bhs/about/aoabh/clinics](http://www.ochealthinfo.com/bhs/about/aoabh/clinics)

### Language(s)

Vietnamese

### Hours of Operatn

Monday – Thursday, 8 a.m. – 6 p.m.; Friday, 8 a.m. – 5 p.m.





## Older Adult Services Program for Assertive Community Treatment (OAS PACT)

### Program Description

The Older Adult Services Program for Assertive Community Treatment (OAS PACT) serves adults 60 years of age and older who are living with a chronic and persistent mental illness, may have a co-occurring substance abuse disorder, and who are experiencing multiple significant impairments in their community functioning. PACT provides outpatient services including assessment, linkage, individual and group therapy, extensive case management, advocacy, medication support, substance abuse treatment, and a variety of recovery services for older adults. Typically, the individuals in this program have not been able to access or benefit from traditional treatment programs.

### Serving

Orange County adults 60 years of age and older. Individuals who are eligible for OAS PACT have a mental illness diagnosis, may have a co-occurring substance abuse disorder, and have had at least two psychiatric hospitalizations within the past year, or frequent Emergency Room visits.

### Operated by

County of Orange, Health Care Agency

### Address

1901 East Fourth St., Ste. 312, Santa Ana, CA 92705

### Phone

(714) 972-3700

### Fax

(714) 972-3744

### Web Address

[www.ochealthinfo.com/bhs/about/aoabh/oas](http://www.ochealthinfo.com/bhs/about/aoabh/oas)

### Language(s)

English, Spanish, Vietnamese, Korean, Farsi (interpretation of other languages is available upon request)

### Hours of Operation

Monday – Thursday, 8 a.m. – 6 p.m.; Friday, 8 a.m. – 5 p.m.



## Older Adult Services

### Senior Health Outreach & Prevention Program (SHOPP)

#### Program Description

SHOPP Behavioral Health Clinicians provide field-based engagement services, crisis intervention, assessment, referral and linkage to resources for older adults ages 60 and above who are experiencing a functional impairment related to a mental health issue. SHOPP also provides psychoeducation to families, caregivers, and brief counseling to clients, families and caregivers. The program is a collaborative effort with Public Health SHOPP.

#### Serving

Orange County older adults age 60 and above

#### Operated by

County of Orange, Health Care Agency

#### Address

1901 East Fourth St., Ste. 312, Santa Ana, CA 92705

#### Phone

(714) 972-3700

#### Fax

(714) 972-3744

#### Web Address

<http://ochealthinfo.com/phs/about/phn/specialized/shopp>

#### Language(s)

English, Spanish, Vietnamese, Farsi, Korean, Mandarin, Amharic, Arabic

#### Hours of Operation

Monday – Thursday, 8 a.m. – 6 p.m.; Friday, 8 a.m. – 5 p.m.



## Older Adult Services Substance Abuse Resource Team (START)

### Program Description

START is an in-home service for older adults ages 60 and above who have a serious mental illness and misuse substances such as alcohol, recreational drugs, over the counter and prescription medications. START serves older adults who are unable to access traditional services geared toward drug and alcohol abuse. Services include engagement, brief intervention, mental health and substance abuse counseling and education, coordination with health care providers, case management, information and linkage to community services and inpatient treatment programs.

### Serving

Orange County older adults age 60 and above.

### Operated by

County of Orange, Health Care Agency

### Address

1901 East Fourth St., Ste. 312, Santa Ana, CA 92705

### Phone

(714) 972-3700

### Fax

(714) 972-3744

### Web Address

[www.ochealthinfo.com/bhs/about/aoabh/start](http://www.ochealthinfo.com/bhs/about/aoabh/start)

### Language(s)

English, Spanish, Vietnamese, Farsi, Korean, Mandarin, Amharic, Arabic

### Hours of Operation

Monday – Thursday, 8 a.m. – 6 p.m.; Friday, 8 a.m. – 5 p.m.



## Adult & Older Adult Behavioral Health (AOABH) Substance Use Disorder (SUD) & Perinatal Services

### Program Description

The SUD Outpatient Treatment program is a program designed to reduce or eliminate the abuse of alcohol and other drugs. This is a voluntary program may include drug testing, individual and group counseling, and regular attendance to self-help meetings (such as Narcotics Anonymous or Alcoholics Anonymous). The SUD Outpatient Treatment offers both Outpatient Drug Free (ODF) and Intensive Outpatient Treatment (IOT) levels of care. The length of time to is determined by each participant's progress. Ongoing continuing care services will be available to all graduates.

The SUD Perinatal Outpatient Treatment Program is a program designed to reduce or eliminate the use of alcohol and other drugs for substance using pregnant and/or parenting women. This is a voluntary program that includes drug testing, gender-specific individual and group counseling, parenting classes, and regular attendance at self-help meetings (such as Narcotics Anonymous or Alcoholics Anonymous). Childcare services are available while the women are receiving counseling services. The SUD Perinatal Outpatient Treatment Program offers Outpatient Drug Free (ODF) and Intensive Outpatient Treatment (IOT) levels of care. The length of time to is determined by each participant's progress. Ongoing continuing care services will be available to all clients who successfully complete their course of treatment.

### Serving

Adults and adolescents who are at risk of/or experiencing alcohol, drug or mental health problems.

### Operated by

County of Orange, Health Care Agency

### Web Address

[www.ochealthinfo.com/bhs/about/adult\\_and\\_older\\_adult\\_behavioral\\_health\\_services/clinics](http://www.ochealthinfo.com/bhs/about/adult_and_older_adult_behavioral_health_services/clinics)

### Language(s)

English, Spanish, American Sign Language



**Location(s)**

**Outpatient & Perinatal Services – North**

**Address:** 2035 E. Ball Rd., Ste. 100A, Anaheim, CA 92805

**Phone:** (714) 517-5140      **Fax:** (714) 517-6169

**Hours of Operation:** Monday, 7 a.m. – 8 p.m.; Tuesday, Wednesday, Thursday, 8 a.m. – 6 p.m.; Friday, 8 a.m. – 5 p.m.

**Outpatient & Perinatal Services – South**

**Address:** 5 Marellu, Ste. 100, Aliso Viejo, CA 92656

**Phone:** (949) 362-5834      **Fax:** (949) 362-5834

**Hours of Operation:** Monday, Tuesday, Wednesday, Thursday, and Friday, 8 a.m. – 6 p.m.; Tuesday, 8 a.m. – 8 p.m.

**Outpatient & Perinatal Services – East**

**Address:** 1200 North Main St., Ste. 301, Santa Ana, CA 92701

**Phone:** (714) 480-6660      **Fax:** (714) 568-4933

**Hours of Operation:** Monday, Tuesday, Wednesday, Thursday, 8 a.m. – 6 p.m.; Friday, 8 a.m. – 5 p.m.

**Outpatient & Perinatal Services – West**

**Address:** 14140 Beach Blvd., Ste. 120, Westminster, CA 92683

**Phone:** (714) 934-4600      **Fax:** (714) 934-4649

**Hours of Operation:** Monday, Tuesday, Wednesday, Thursday, 8 a.m. – 6 p.m.; Friday, 8 a.m. – 5 p.m.



## Authority & Quality Improvement Acadia Recovery Solutions

### Program Description

Opioid Treatment Program offers medication services, case management, family counseling, group counseling and individual counseling.

### Serving

Adults (Ages 18+) Seniors ( 65+)

### Operated by

County contracted

### Address

2101 East 1<sup>st</sup> Street, Santa Ana, CA 92701

### Phone

(714) 542-3581 or (855) 359-2665

### Fax

(714) 542-2246

### Web Address

<https://www.southerncaliforniactc.com/about/> subsidizing

### Language(s)

Arabic, English, Gujarati, Korean, Spanish, Vietnamese

### Hours of Operation

Monday – Friday, 5 a.m. – 2 p.m.; medication hours M – F, 5 am. -1 pm, Saturday and Sunday – 6:15 am – 9:15 am



## Adult and Older Adult Behavioral Health (AOABH) Twin Town Treatment Center

### Program Description

Outpatient and Intensive Outpatient services that include interview and assessment for alcohol and drug problems. Intensive outpatient and day treatment for adult and adolescent addiction. Relapse prevention, referral to and coordination of care with Alternative levels of care including detoxification. Medical services. Psychiatric treatment, mental health counseling, family education and counseling. Family Codependency counseling.

### Serving

Adolescents ages 12-18. Adults 18 and up.

### Operated by

County contracted

### Address

24953 Paseo De Valencia Bldg. B. Ste 1B, Laguna Hills, CA 92653  
705 W. La Veta, Ste 208, Orange, CA 92868

### Phone

(866)594-8844

### Web Address

<https://twintowntreatmentcenters.com>

### Language(s)

English, Spanish

### Hours of Operation

Monday – Friday, 9 a.m. – 9:30 p.m.; Saturday, 9 a.m. – 5 p.m.



## Adult & Older Adult Behavioral Health (AOABH) Older Adult Services Recovery

### Program Description

Program provides case management, mental health services, medication services and crisis intervention. Services are provided in the community, in clients' homes and at the clinic. Program services all Orange County

### Serving

Orange County residents age 60 and up with impairments in functioning related to a mental illness.

### Operated by

County contracted

### Address

401 W. Civic Center Drive, #800, Santa Ana, CA 92701

### Phone

(714) 972-3700

### Fax

(714) 972-3744

### Web Address

### Language(s)

English, Spanish, Vietnamese, Korean, Farsi, Amharic, Cantonese, Mandarin

### Hours of Operation

Monday – Thursday, 8 a.m. – 6 p.m.; Friday, 8 a.m. – 5 p.m.





## Adult & Older Adult Behavioral Health (AOABH) Outpatient Recovery Services

### Program Description

AOABH Adult Outpatient Clinic clients that have graduated the Outpatient Clinic program will be transitioned to Outpatient Recovery Services. The Recovery Services program will provide case management and therapeutic services to assist clients in moving through the states of recovery. As clients achieve their care plan goals and have maintained psychiatric stability they will be transitioned to a lower level of care for ongoing supportive services.

### Serving

Adult clients that have graduated the Outpatient Clinic program and still require some case management, therapeutic and medication services as they move through the states of recovery.

### Operated by

County of Orange, Health Care Agency

### Web Address

[www.ochealthinfo.com/bhs/about/adult\\_and\\_older\\_adult\\_behavioral\\_health\\_services/clinics](http://www.ochealthinfo.com/bhs/about/adult_and_older_adult_behavioral_health_services/clinics)

### Language(s)

English, Spanish, Vietnamese (interpretation of other languages is available upon request.

### Address

Aliso Viejo –5 Mareblu, Aliso Viejo, CA 92656  
(949) 643-6930 Fax: (949) 643-6944

Anaheim – 2035 E. Ball Rd., Suite 200, Anaheim, CA 92806  
(714) 517-6300 Fax (714) 517-6306

Santa Ana – 401 W. Civic Center Dr. #800, Santa Ana, CA 92701  
(714)480-6767 Fax (714) 568-4362

Westminster- 14140 Beach Blvd., Suite 223, Westminster, CA 92683  
(714) 896-7566 Fax (714)896-7408

### Hours of Operation

Monday – Thursday, 8 a.m. – 6 p.m., Friday 8 a.m. – 5 p.m.



## Clinical Evaluation and Guidance Unit (Orangewood Children and Family Center)

### Program Description

Children and Youth Behavioral Health Services County staff provide assessment and treatment services to youth during their stay at the Social Services Agency (SSA) shelter home, Orangewood Children and Family Center and afterwards until continued treatment at a local clinic can be arranged.

### Serving

Orange County children and youth admitted to Orangewood Children and Family Center or considered by the Social Services Agency for admission to Orangewood Children's Home. Eligibility includes Medi-Cal.

### Operated by

County of Orange, Health Care Agency

### Address

301 The City Drive South, Orange, CA 92868

### Phone

(714) 935-6363

### Fax

(714) 935-8112

### Web Address

<http://ochealthinfo.com/bhs/about/cys>

### Language(s)

English, Spanish, Vietnamese (provision for other languages as necessary)

### Hours of Operation

24 hours a day, 7 days a week, 365 days a year



## Clinical Evaluation and Guidance Unit (Juvenile Hall/Probation)

### Program Description

Children and Youth Behavioral Health Services County staff provide assessment and treatment services to youth during incarceration. This includes incarcerated youth in Juvenile Hall, the Youth Guidance Center, the Joplin Youth Center and the Youth Leadership Academy.

### Serving

All incarcerated children and youth.

### Operated by

County of Orange, Health Care Agency

### Address

301 The City Drive South, Orange, CA 92868

### Phone

(714) 935-6363

### Fax

(714) 935-8112

### Web Address

<http://ocgov.com/gov/probation/ocjjs>

### Language(s)

English, Spanish, Vietnamese

### Hours of Operation

Hours of Operation: Monday–Friday, 7:30 a.m. – 5 p.m.



## Continuing Care Placement Unit (CCPU)

**Program Description**

Children and Youth Behavioral Health Services County staff implement consultation, treatment and intensive case management for Social Services Agency youth in placement.

**Serving**

Orange County Children and youth referred by Social Services Agency staff.

**Operated by**

County of Orange, Health Care Agency

**Address**

800 N. Eckhoff, Orange, CA 92868

**Phone**

(714) 704-8826

**Fax**

(714) 704-8803

**Web Address**

<http://ochealthinfo.com/bhs/about/cys>

**Language(s)**

English, Spanish

**Hours of Operation**

Monday – Friday, 7 a.m. – 5 p.m.



## Youth Reporting Center

### Program Description

The Youth Reporting Center (YRC) is a Probation Department alternative to incarceration. This program provides school and behavioral health services for probation youth in the community who are assigned to the program. Children and Youth Behavioral Health Services provides the behavioral health services component to this collaboration with the Probation Department and the Orange County Department of Education.

### Serving

County of Orange, Health Care Agency, Probation Department and Orange County Department of Education.

### Operated by

County of Orange, Health Care Agency, Probation Department and Orange County Department of Education

### Web Address

[www.ocgov.com/gov/probation/ocjjs](http://www.ocgov.com/gov/probation/ocjjs)

[www.ochealthinfo.com/gov/health/bhs/about/cys/court\\_programs.asp](http://www.ochealthinfo.com/gov/health/bhs/about/cys/court_programs.asp)

### Location(s)

#### Youth Reporting Center – Central

**Address:** 1001 S. Grand Ave., Santa Ana, CA 92705

**Phone:** (714) 667-7770 **Fax:** (714) 667-7640

**Hours of Operation:** Monday – Friday, 8 a.m. – 5 p.m.

**Languages(s):** English, Spanish

#### Youth Reporting Center – North

**Address:** 1001 S. Grand Ave., Suite B, Santa Ana, CA 92705

**Phone:** (714) 687-6705 **Fax:** (714) 667-7621

**Hours of Operation:** Monday – Friday, 8 a.m. – 6 p.m.

**Language(s):** English, Spanish



## Adult & Older Adult Behavioral Health (AOABH) Recovery Center

### Program Description

The Recovery Centers (RCs) are staff and peer operated adult outpatient mental health clinics, which provide less intensive services than other Adult and Older Adult Behavioral Health Services outpatient programs. Once a person is stabilized in the outpatient system of care, the RCs provide the next step and a gradual transition to community reintegration. A typical client of these services is no longer in acute crisis and is successfully meeting their basic needs. The program is designed to serve individuals that are actively engaged in their care and that are pursuing some quality of life goals, yet may still be experiencing moderate but intermittent disruption in their lives.

Outpatient services include medication support, individual and group mental health services, substance abuse treatment, peer support services and activities, and episodic case management. A variety of cultural and linguistic services is available.

### Serving

Adults age 18 and older referred from other county outpatient programs, who have been treated for mental illness, may have a co-occurring substance use disorder, and are on the road to functioning independently in the community. To access services, clients are referred from other county outpatient programs.

### Operated by

County of Orange, Health Care Agency

### Address

800 N. Eckhoff, Orange, CA 92868

### Web Address

<http://www.ochealthinfo.com/bhs/about/aoabh>



**Operated by**

**County contracted – Mental Health Association**

**Address:** 3540 Howard Way, Ste. 150 E., Costa Mesa, CA 92627

**Phone:** (949) 646-9227      **Fax:** (949) 646-9191

**Language(s):** English, Farsi, Korean, Spanish, Vietnamese  
(interpretation is available for all languages)

**Hours of Operation:** Monday – Friday, 8 a.m. – 5 p.m.

**County contracted – Mental Health Association**

**Address:** 22471 Aspan St., Ste. 103, Lake Forest, CA 92630

**Phone:** (949) 458-2715      **Fax:** (949) 458-3583

**Language(s):** English, Farsi, Korean, Spanish, Vietnamese  
(interpretation is available for all languages)

**Hours of Operation:** Monday – Friday, 8 a.m. – 5 p.m.

**County contracted – Mental Health Association (specialized services available)**

**Address:** 3055 W. Orange Ave., Ste 105, Anaheim, CA 92804

**Phone:** (714) 638-8277      **Fax:** (714) 638-8343

**Language(s):** English, Farsi, Korean, Spanish, Vietnamese  
(interpretation is available for all languages)

**Hours of Operation:** Monday – Friday, 8 a.m. – 5 p.m.

**County contracted – College Community Services**

**Address:** 1901 E. Center St., Anaheim, CA 92805

**Phone:** (714) 780-0750      **Fax:** (714) 780-0757

**Language(s):** English, Farsi, Korean, Spanish, Vietnamese  
(interpretation is available for all languages)

**Hours of Operation:** Monday – Friday, 8 a.m. – 5 p.m.

**County contracted – College Community Services Specialized services available for Hispanic Community members who may access this site directly.**

**Address:** 1200 North Main St., Ste. 650, Santa Ana, CA 92701

**Phone:** (714) 824-8140      **Fax:** (714) 824-8141

**Language(s):** Spanish speaking, English (interpretation is available for all languages)

**Hours of Operation:** Monday – Friday, 8 a.m. – 5 p.m.



## Adult & Older Adult Behavioral Health (AOABH) Open Access

### Program Description

The Open Access program provides immediate and short term integrated behavioral health services including brief assessments, crisis counseling, SUD services, temporary medication support, and linkage to ongoing care. The client is provided assistance until they are linked to a primary care provider. These services are intended for persons exiting inpatient and jail systems in need of outpatient psychiatric follow-up, those who are pending SUD services, and clients currently open in the adult system of care. These services provide access to urgent care, SUD treatment and improve the system's ability to provide 24-hour outpatient follow-up post hospitalization and discharge from jail.

Outpatient services include medication support, individual and group mental health services, substance abuse treatment, peer support services and activities, and episodic case management. A variety of cultural and linguistic services are available.

### Serving

Adults age 18 and older in North and South Orange County referred from psychiatric hospitals, jails and other county outpatient programs, who have been treated for mental illness, may have a co-occurring substance use disorder, and need immediate help to improve their functioning in the community.

### Operated by

County of Orange, Health Care Agency

### Web Address

[www.ochealthinfo.com/bhs/about/aoabh](http://www.ochealthinfo.com/bhs/about/aoabh)





## Location(s)

### Open Access – North

**Address:** 303 W. Lincoln, Ste. 130, Anaheim, CA 92805

**Phone:** (714) 520-7300      **Fax:** (714) 520-0882

**Language(s):** English, Cambodian, Laotian, Spanish, Vietnamese (interpretation is available for all languages)

**Hours of Operation:** Monday – Thursday, 8 a.m. – 6 p.m.; Friday, 8 a.m. – 5 p.m.

### Open Access – South

**Address:** 3115 Red Hill Ave., Costa Mesa, CA 92626

**Phone:** (714) 850-8463      **Fax:** (714) 850-8492

**Language(s):** English, Chinese, Spanish (interpretation is available for all languages)

**Hours of Operation:** Monday – Thursday, 8 a.m. – 6 p.m.; Friday, 8 a.m. – 5 p.m.



## Adult & Older Adult Behavioral Health (AOABH) AB 109

### Program Description

The AB 109 program provides a continuum of behavioral health services to AB 109 adults (non-serious, non-violent, and non-sex offenders) who have mental health and/or substance use issues and are being released from state prison or county jail. Individuals are identified through a collaborative effort by the Orange County Probation Department and Health Care Agency (HCA). HCA staff are stationed at Probation offices to screen and link individuals to behavioral health services and coordinate for services. Services are provided by both county-operated and county-contracted programs. Continuum of services include:

- Assessment
- Counseling and Therapy (individuals and groups)
- Case Management
- Psychiatric Services
- Medical and Social Model Detox
- Residential Substance Use Treatment
- Sober Living
- Emergency Shelter
- Medication Assisted Treatment
- Full Service Partnership
- Referral and Linkage

### Serving

AB 109 adults (ages 18 and older) referred from the Probation Department.

### Operated by

County of Orange, Health Care Agency and various County contractors



HCA AB 109 staff are co-located at Probation offices to assist with questions about AB 109 services:

**Anaheim Probation Office**

**Address:** 1535 E. Orangewood Ave., Anaheim, CA 92805

**Phone:** (714) 937-4500      **Fax:** (714) 938-0852

**Santa Ana Probation Office**

**Address:** 401 W. Civic Center, Suite 600, Santa Ana, CA 92701

**Phone:** (714) 480-4601      **Fax:** (714) 850-8455

**Westminster Probation Office**

**Address:** 14180 Beach Blvd., Westminster, CA 92683

**Phone:** (714) 896-7500      **Fax:** (714) 375-1175

**Address and Phone**

**Web Address**

[www.ochealthinfo.com/bhs/about/aoabh](http://www.ochealthinfo.com/bhs/about/aoabh)

**Language(s)**

English, Spanish

**Hours of Operation**

Monday – Friday, 8 a.m. – 5 p.m.



## Adult & Older Adult Behavioral Health (AOABH) CalWORKs

### Program Description

The Behavioral Health CalWORKs Services program provides vocationally focused and integrated mental health and substance use services to CalWORKs Welfare-to-Work (WTW) participants in order to remove barriers to employment, facilitate successful participation in WTW activities and achieve self-sufficiency. Services include outreach and engagement, assessment, individual therapy, group therapy, family counseling, couples counseling, crisis intervention, case management, referral and linkage, on-site childcare and employment support services.

### Serving

CalWORKs Welfare-to-Work participants who have mental health and/or substance use issues and are referred by the Social Services Agency (SSA). HCA CalWORKs staff housed at SSA CalWORKs office locations will refer and link individuals to needed services.

### Address

#### County Contracted – College Community Services

##### Address & Phone:

4000 W. Metropolitan Drive, Suite 130, Orange, CA 92868

**Phone:** (714) 824-8150 Fax (714)824-8151

**Web Address:** [www.ssa.ocgov.com](http://www.ssa.ocgov.com)

**Language(s):** English, Spanish Vietnamese

### Operated by

**County of Orange, Health Care Agency**

### Languages

**English, Spanish**

### Hours of Operation

**Hours of Operation:** Monday – Friday, 8 a.m. – 5 p.m. with early, evening appointments available as needed.



## Adult & Older Adult Behavioral Health (AOABH) CalWORKs (Mariposa)

### Program Description

The Behavioral Health CalWORKs Services program provides vocationally focused and integrated mental health and substance use services to CalWORKs Welfare-to-Work (WTW) participants in order to remove barriers to employment, facilitate successful participation in WTW activities and achieve self-sufficiency. Services include outreach and engagement, assessment, individual therapy, group therapy, family counseling, couples counseling, crisis intervention, case management, referral and linkage, on-site childcare and employment support services.

### Serving

CalWORKs Welfare-to-Work participants who have mental health and/or substance use issues and are referred by the Social Services Agency (SSA). HCA CalWORKs staff housed at SSA CalWORKs office locations will refer and link individuals to needed services.

### Address

**County Contracted – Mariposa Women & Family Center  
Address & Phone:**

29222 Rancho Viejo Rd., San Juan Capistrano, CA 92675

**Phone:** (714) 824-8150 **Fax** (714)824-8151

**Web Address:** [www.ssa.ocgov.com](http://www.ssa.ocgov.com)

**Language(s):** English, Spanish Vietnamese

### Operated by

**County of Orange, Health Care Agency**

### Languages

**English, Spanish**

### Hours of Operation

**Hours of Operation:** Monday – Friday, 8 a.m. – 5 p.m. with early, evening appointments available as needed.



## Adult & Older Adult Behavioral Health (AOABH) Methadone Maintenance

### Program Description

Western Pacific Rehabilitation provides methadone maintenance and 21-day outpatient detoxification.

### Serving

Adults 18 and older. Eligibility includes self-pay, Medi-Cal and sliding scale.

### Operated by

#### County Contracted – Western Pacific Rehabilitation

**Address:** 275 Victoria Street, Suite 1H, Costa Mesa, CA 92627

**Phone:** (949) 629-2860      **Fax:** (949) 629-2867

**Language(s):** English, Spanish

**Hours of Operation:** Monday – Friday, 5:30 a.m. – 2:15 p.m. (dosing stops at 12:30 p.m.); Saturday – Sunday, 5:45 a.m. – 9:30 a.m. (dosing stops at 9 a.m.)

**Address:** 218 E. Commonwealth Ave., Fullerton, CA 92832

**Phone:** (714) 992-4770      **Fax:** (714) 992-5475

**Language(s):** English, Spanish

**Hours of Operation:** Monday – Friday, 5 a.m. – 1:45 p.m. (dosing stops at 12 noon); Saturday-Sunday, 5 a.m. – 9 a.m. (dosing stops at 8:30 a.m.)

### Web Address

[www.westpacmed.com](http://www.westpacmed.com)



## Adult & Older Adult Behavioral Health (AOABH) Integrated Community Services (ICS)

### Program Description

The Integrated Community Services (ICS) Community Home provides outreach into the medical community to facilitate bi-directional services to fully integrate both physical and mental health care. This collaboration between community medical clinics and County mental health programs is a healthcare model that will prove to bridge the gaps in service for the underserved low-income community and increase better overall health outcomes for the patients involved. In the ICS Community Home project, a Mental Health Team (Psychiatrist, Behavioral Health Services Clinician and Mental Health Caseworker) will be brought into existing community health clinics: Southland Health Center and Korean Community Services. Bringing in each team to complement existing patient services allows full integration of patient care in each location.

### Serving

Orange County residents who are transitional age youth (TAY), adult and older adult participants who are receiving primary care services at Korean Community Services or Southland Health Center and are in need of mental health services. Eligibility includes Medi-Cal, Medi-Cal eligible or third party coverage.

### Operated by

#### **County Contracted – Southland Health Center**

**Address:** 9862 Chapman Ave., Ste. B,  
Garden Grove, CA 92861

**Phone:** (714) 620-7070      **Fax:** (714) 620-7071

**Web Address:** [www.thevncoc.org/asian\\_hc.html](http://www.thevncoc.org/asian_hc.html)

**Language(s):** English, Spanish, Vietnamese

**Hours of Operation:** Monday – Friday, 9 a.m. – 6 p.m.

#### **County Contracted – Korean Community Services (KCS)**

**Address:** 7212 Orangethorpe Ave., Ste. 9A,  
Buena Park, CA 90621

**Phone:** (714) 503-6550      **Fax:** (714) 562-8729

**Web Address:** [www.kcshealthcenter.org](http://www.kcshealthcenter.org)

**Language(s):** English, Korean, Spanish

**Hours of Operation:** Friday, 9 a.m. – 5 p.m.

### Web Address

[www.westpacmed.com](http://www.westpacmed.com)





# INTENSIVE OUTPATIENT PROGRAMS



## Adult Crisis Assessment & Psychiatric Emergency and Response Teams

### Program Description

The Crisis Assessment Team (CAT) provides 24-hour mobile response services to any adult experiencing a behavioral crisis. Staff members receive calls to provide crisis intervention individuals living with mental health issues from law enforcement officers in the field, social service agencies, and concerned family members. CAT conducts risk assessments, initiates involuntary hospitalizations when necessary, provides resources and linkage, and conducts follow-up contacts for individuals assessed.

Staff members on our Psychiatric Emergency and Response Team (PERT) are mental health clinicians who ride along with assigned law enforcement officers to address mental health related calls in the assigned city. PERT conducts risk assessments, initiates involuntary hospitalizations when necessary, and provides resources and education. The program also provides outreach and follow-up services to ensure linkage to ongoing services.

### Serving

Orange County residents 18 years of age and older..

### Operated by

County of Orange, Health Care Agency

### Address and Phone

**405 W. 5<sup>th</sup> Street, Suite 211, Santa Ana, CA 92701**  
**Mobile service**  
**(855) 625-4657    FAX: 714-667-3968**

### Web Address

<http://www.ochealthinfor.com/bhs/about/aoabh/cartpert>

### Language(s)

English, Spanish, Vietnamese, Korean, Cambodian, Arabic and Tagalog

### Hours of Operation

24 hours a day, 7 days a week, 365 days a year



## Adult & Older Adult Behavioral Health (AOABH) Program for Assertive Community Treatment (PACT)

### Program Description

The Program for Assertive Community Treatment (PACT) Court is an intensive outpatient program that serves adults living with serious mental illness who are participating in the Mental Health Opportunity Court and Recovery Court. Services include assessment, individual and group therapy, case management, crisis intervention, co-occurring substance use services, medication support, advocacy, referral and linkage. Services are provided in collaboration with the Court, Probation Department, Public Defender's Office and District Attorney's Office. Referrals for Opportunity Court and Recovery Court come from the Public Defender's Office or judges

### Serving

The PACT Court program serves adults living with serious mental illness who are participating in the Mental Health Opportunity Court and Recovery Court

### Operated by

County of Orange, Health Care Agency

### Address and Phone

#### Anaheim

**Address:** 2035 E. Ball Rd., Ste. 200, Anaheim, CA 92806

**Phone:** (714) 517-6300 **Fax:** (714) 517-6306

#### Costa Mesa

**Address:** 3115 Red Hill Ave., Costa Mesa, CA 92626

**Phone:** (714) 850-8463 **Fax:** (714) 850-8492

#### Fullerton

**Address:** 211 W. Commonwealth Ave., Fullerton, CA 92832

**Phone:** (714) 447-7000 **Fax:** (714) 447-7003

#### Mission Viejo

**Address:** 23228 Madero, Mission Viejo, CA 92691

**Phone:** (949) 454-3940 **Fax:** (949) 770-1953



	<b>Santa Ana</b>	
	<b>Address:</b> 401 W. Civic Center, Ste. 600, Santa Ana CA 92701	
	<b>Phone:</b> (714) 850-8402	<b>Fax:</b> (714) 850-8455
	<b>Westminster</b>	
	<b>Address:</b> 14140 Beach Blvd., Ste. 223, Westminster, CA 92683	
	<b>Phone:</b> (714) 896-7566	<b>Fax:</b> (714) 896-7408
<b>Web Address</b>	<a href="http://www.ochealthinfo.com/bhs/about/aoabh">www.ochealthinfo.com/bhs/about/aoabh</a>	
<b>Language(s)</b>	English, Spanish, Vietnamese (interpretation in other languages is available upon request)	
<b>Hours of Operation</b>	Monday – Friday, 8 a.m. – 5 p.m.	



## Adult and Older Adult Behavioral Health Services

### Wel-Mor Psychology Group, Inc.

#### Program Description

Outpatient and Intensive Outpatient services that include substance use treatment, assessment of placement and continuing needs, individual and group therapy, case management, linkage and coordination of care, and collaboration of goals with clients.

#### Serving

Adults and adolescents 12 to 17 years. Drug Medi-Cal beneficiaries entering treatment must meet medical necessity and level of care determination based on the criteria of the American Society of Addiction Medicine (ASAM).

#### Operated by

County Contract –

#### Address

1440 N. Harbor Blvd., Suite 725, Fullerton, CA 92835  
4120 Birch Street, Suite 131, Newport Beach, CA 92660

#### Phone

(714) 540-9070

#### Fax

(714) 884-4347

#### Web Address

[www.welmortreatment.com](http://www.welmortreatment.com)

#### Language(s)

English

#### Hours of Operation

Monday – Friday, 8 a.m. – 9 p.m.; Saturday 9 a.m. – 12 p.m.



## Adult & Older Adult Behavioral Health (AOABH) Outpatient Clinics – (Access Point)

### Program Description

Adult and Older Adult Behavioral Health Services provides outpatient recovery oriented behavioral health services which emphasize individual needs, strengths, choices, and involvement in service planning and implementation. Outpatient services include assessment, evaluation, collateral therapy, individual and group therapy, substance abuse treatment, medication support, rehabilitation, linkage and consultation, placement, plan development, crisis intervention and specialized residential services. The Santa Ana, Westminster or Anaheim County Clinics also provide integrated community services (ICS) which addresses both physical and mental health care needs.

### Serving

Adults who have a serious and persistent mental illness, may have a co-occurring substance use disorder, and exhibit a significant impairment in their ability to function in the community. Individuals eligible for the program typically do not have access to other resources, and may have a history of psychiatric hospitalization.

### Operated by

County of Orange, Health Care Agency

### Address

Anaheim: 2035 E. Ball Rd., Ste. 200, Anaheim, CA 92806  
 Aliso Viejo: 5 Mareblu, Aliso Viejo, CA, 92656  
 Santa Ana: 1200 North Main St., Ste. 200,  
 Santa Ana, CA 92701  
 Westminster: 14140 Beach Blvd., Ste. 223,  
 Westminster, CA 92683

### Phone and Fax

Anaheim: Phone: (714) 517-6300 Fax: (714) 517-6306  
 Aliso Viejo: Phone: (949) 643-6930 Fax: (949) 643-6944  
 Santa Ana: Phone: (714) 480-6767 Fax: (714) 568-4362  
 Westminster: Phone: (714) 896-7566 Fax: (714) 896-7408

### Web Address

[www.ochealthinfo.com/bhs/about/aoabh/clinics](http://www.ochealthinfo.com/bhs/about/aoabh/clinics)

### Language(s)

English, Spanish, Vietnamese, Farsi, Korean (interpretation of other languages is available upon request)

### Hours of Operation

Monday – Thursday, 8 a.m. – 6 p.m.; Friday, 8 a.m. – 5 p.m.



## Transitional Age Youth/Program for Assertive Community Treatment (TAY PACT)

### Program Description

The Program for Assertive Community Treatment for Transitional Age Youth (TAY PACT) provides outpatient services including assessment, linkage, individual and group therapy, extensive case management, advocacy, medication support, substance abuse treatment, and a variety of recovery services for individuals from age 18 to 26 who are living with severe and persistent mental illness and who are experiencing multiple significant impairments in their community functioning.

### Serving

Orange County adults' age 18 to 26 who have a mental illness diagnosis, may have co-occurring substance use disorder, and have had at least two psychiatric hospitalizations and/or incarcerations due to a mental health condition within the past year.

### Operated by

County of Orange, Health Care Agency

### Address and Phone

#### Anaheim

**Address:** 2035 E. Ball Rd., Ste. 200, Anaheim, CA 92806

**Phone:** (714) 517-6300 **Fax:** (714) 517-6306

#### Fullerton

**Address:** 211 W. Commonwealth Ave., Fullerton, CA 92832

**Phone:** (714) 447-7000 **Fax:** (714) 447-7003

#### Mission Viejo

**Address:** 23228 Madero, Mission Viejo, CA 92691

**Phone:** (949) 454-3940 **Fax:** (949) 770-1953

#### Santa Ana

**Address:** 1200 North Main. St., Ste. 200, Santa Ana CA 92701

**Phone:** (714) 480-6767 **Fax:** (714) 568-4362

#### Westminster

**Address:** 14140 Beach Blvd., Ste. 223, Westminster, CA 92683

**Phone:** (714) 896-7566 **Fax:** (714) 896-7408

### Web Address

[www.ochealthinfo.com/bhs/about/aoabh](http://www.ochealthinfo.com/bhs/about/aoabh)

### Language(s)

English, Farsi, Korean, Spanish, Vietnamese (interpretation in other languages is available upon request)

### Hours of Operation

Monday – Thursday, 8 a.m. – 6 p.m.; Friday, 8 a.m. – 5 p.m.



## Pacific Asian Unit Program for Assertive Community Treatment (PAU PACT)

### Program Description

The Pacific Asian Unit Program for Assertive Community Treatment (PAU PACT) provides intensive outpatient services including assessment, linkage, individual and group therapy, extensive case management, advocacy, medication support, substance abuse treatment, and a variety of recovery services for adults. Typically, the individuals in this program have not been able to access or benefit from traditional treatment programs.

### Serving

Primarily monolingual Pacific Asian adults in Orange County who have a mental illness diagnosis, may have a co-occurring substance use disorder, and have had at least two psychiatric hospitalizations and/or incarcerations due to a mental illness within the past year.

### Operated by

County of Orange, Health Care Agency

### Address

401 West Civic Center Dr., #800, Santa Ana, CA 92701

### Phone

(714) 480-6767

### Fax

(714) 568-4362

### Web Address

[www.ocalthinfo.com/bhs/about/aoabh](http://www.ocalthinfo.com/bhs/about/aoabh)

### Language(s)

Vietnamese

### Hours of Operation

Monday – Thursday, 8 a.m. – 6 p.m.; Friday, 8 a.m. – 5 p.m.



## Older Adult Services Program for Assertive Community Treatment (OAS PACT)

### Program Description

The Older Adult Services Program for Assertive Community Treatment (OAS PACT) serves adults age 60 years and older who are living with severe and persistent mental illness and experiencing multiple significant impairments in their community functioning. PACT is an intensive outpatient program that provides outpatient services including assessment linkage, individual and group therapy, extensive case management, advocacy, medication support, substance abuse treatment, and a variety of recovery services for older adults. Typically, the individuals in this program have not been able to access or benefit from traditional mental health treatment programs.

### Serving

Orange County adults age 60 years and older who have a severe and persistent mental illness diagnosis, may have a co-occurring substance use disorder, and have had at least two psychiatric hospitalizations and/or incarcerations due to their symptoms within the past year, or frequent emergency room visit.

### Operated by

County of Orange, Health Care Agency

### Address

1901 East Fourth St., Ste. 312, Santa Ana, CA 92705

### Phone

(714) 972-3700

### Fax

(714) 972-3744

### Web Address

[www.ocalthinfo.com/bhs/about/aoabh/oas](http://www.ocalthinfo.com/bhs/about/aoabh/oas)

### Language(s)

English, Farsi, Korean, Spanish, Vietnamese (interpretation of other languages is available upon request)

### Hours of Operation

Monday – Thursday, 8 a.m. – 6 p.m.; Friday, 8 a.m. – 5 p.m.





## Children and Youth Behavioral Health/Program for Assertive Community Treatment (CYBH PACT)

### Program Description

PACT (Program for Assertive Community Treatment) is a field-based program for transitional age youth and young adults ages 14-21 living with a chronic and persistent mental illness, who may have a co-occurring substance use disorder, and who are experiencing significant impairments in their daily functioning. Outpatient services include the following intensive mental health services: assessment, individual, family and group therapy, substance abuse treatment, medication support, crisis intervention, extensive case management, and advocacy.

### Serving

Orange County youth between the ages of 14-21 years old who have at least two psychiatric hospitalizations or one psychiatric hospitalization for at least 10 days and/or incarcerations, and are referred by their Children and Youth Behavioral Health (CYBH) clinician.

### Operated by

County of Orange, Health Care Agency

### Address

2200 W. Orangewood Ave., #212 Orange, CA 92868

### Phone

(714) 645-8040

### Web Address

[www.ochealthinfo.com/bhs/about/cys](http://www.ochealthinfo.com/bhs/about/cys)

### Language(s)

English, Spanish (interpretation in other languages available upon request)

### Hours of Operation

Monday – Friday, 8 a.m. – 5 p.m.



## Wayfinders Collaborative Courts Full Service Partnership

### Program Description

The Collaborative Court Full Service Partnership (FSP) was designed to meet the needs of unserved and underserved youth who have come under the purview of Juvenile Court. It provides services to clients and families in coordination with Children and Youth Behavioral Health (CYBH), Probation, Social Services, various attorneys representing the client, family, the County and Juvenile Court. It serves consumers, dependents and/or wards of the court who have serious emotional disturbances in addition to truancy and/or substance abuse related-issues. The FSP provides culturally competent, in-home and community-based behavioral health services to clients and their families that address client and family needs across all life domains and works to improve client self-efficacy and social competence.

### Serving

Orange County children and youth through age 25 who are referred by Juvenile Court.

### Operated by

County Contracted – Community Service Programs

### Address

1221 E. Dyer Rd., Ste. 220, Santa Ana, CA 92705

16580 Harbor Blvd., Unit O, Fountain Valley, CA 92708

### Phone

(714) 492-1010

### Fax

(714) 617-7639

### Web Address

[www.wearewayfinders.org](http://www.wearewayfinders.org)

### Language(s)

English, Spanish, Vietnamese

### Hours of Operation

Monday – Friday, 8 a.m. – 8 p.m.; Crisis services for enrolled clients provided 24 hours a day, 7 days a week, 365 days a year



## Adult & Older Adult Behavioral Health (AOABH) Assisted Outpatient Treatment (AOT) Assessment and Linkage Team

### Program Description

The Assisted Outpatient Treatment (AOT) program, also known as Laura's Law, provides court-ordered treatment for persons with severe mental illness who meet specific criteria. The program is designed to assist individuals with severe mental illness who have been unable and/or unwilling to engage in voluntary services to obtain the proper care they need. The AOT Assessment and Linkage Team conducts outreach to determine that specific program criteria are met and works to engage and link individuals to services voluntarily. If an individual meets AOT criteria but refuses voluntary treatment, the AOT Assessment and Linkage Team works with County Counsel to process with the court process for court-ordered treatment.

To qualify for the program, the following criteria must be met:

- Individual is an Orange County resident and is 18 years of age or older; and
- Individual has a severe mental illness; and
- There has been a clinical determination that the individual is unlikely to survive safely in the community without supervision; and
- The individual's condition is substantially deteriorating; and
- Individual has been offered an opportunity to engage in treatment and has not been successful; and
- AOT would be the least restrictive placement; and
- History of lack of compliance with treatment for his/her mental illness and at least one of the following is true:
  - o In the last 36 months, the individual has had at least two psychiatric hospitalizations or has been admitted to the acute mental health unit in a correctional facility; OR
  - o In the last 48 months, the individual has engaged in serious acts of violence or made serious threats of violence toward himself/herself or others.

### Serving

Adults who are Orange County residents.

### Operated by

County of Orange, Health Care Agency

### Address

200 W. Santa Ana Blvd., Ste 125, Santa Ana, CA 92701

### Phone

(855) HCA-1421 or (855) 422-1421

### Web Address

[www.ochealthinfo.com/bhs/about/aoabh/aot](http://www.ochealthinfo.com/bhs/about/aoabh/aot)

### Language(s)

English, Spanish, Vietnamese

### Hours of Operation

Monday – Friday, 8 a.m. – 5 p.m.



## Adult & Older Adult Behavioral Health (AOABH) Telecare and Orange (TAO) – Full Service Partnership

### Program Description

Telecare and Orange (TAO) is an evidence- and strength-based model that focuses on the person rather than the disease and provides culturally competent, mental health services to adults with serious, chronic persistent mental illness. Aptly named TAO, meaning the process of nature by which all things change, which is to be followed for a life of harmony. TAO uses a multidisciplinary team that includes a psychiatrist, a nurse, a Team Lead, and Personal Service Coordinators (PSC). The program serves as the fixed point of responsibility for all members. Caseloads are shared among team members. We believe in a “whatever it takes approach” in supporting clients. Outpatient services will include, but not be limited to the following:

- Outreach and engagement
- Housing services
- 24 hours a day, 7 days a week, 365 days a year emergency response
- Community-based wraparound recovery services
- Vocational and educational Services
- Job coaching/developing
- Intensive case management
- Money management/representative payee support
- Flexible fund account for immediate needs
- Transportation
- Illness education and self-management
- Medication support
- Dual diagnosis recovery services
- Linkage to financial benefits/entitlements
- Family and peer support
- Supportive socialization/meaningful community role

### Serving

Orange County adults who are chronically mentally ill, homeless or in imminent risk of homelessness. May or may not be dually diagnosed.

### Operated by

County Contracted – Telecare and Orange



Location(s)

**Telecare and Orange (TAO) North**

**Address:** 2531 W. Woodland Dr., Anaheim, CA 92801

**Phone:** (714) 296-1934 **Fax:** (714) 226-9887

**Language(s):** English, Spanish, Vietnamese, Arabic, Tagalog, Mandarin, Hindi, Khmer, Indonesian, Urdu, Panjabi, Malay, Bahasa (interpretation of other languages is available upon request)

**Hours of Operation:** Monday, Wednesday, Friday, 8 a.m. – 5 p.m.; Tuesday, Thursday, 8 a.m. – 7 p.m.; Saturday, 8:30 a.m. – 5 p.m.; **Crisis Line after hours: (714) 397-6606**

**Telecare and Orange (TAO) Central**

**Address:** 12141 Brookhurst St., Garden Grove, CA 92841

**Phone:** (714) 296-1934 **Fax:** (714) 426-8161

**Language(s):** English, Spanish, Vietnamese, Arabic, Tagalog, Mandarin, Hindi, Khmer, Indonesian, Urdu, Panjabi, Malay, Bahasa (interpretation of other languages is available upon request)

**Hours of Operation:** Monday, Wednesday, Friday, 8 a.m. – 5 p.m.; Tuesday, Thursday, 8 a.m. – 7 p.m.; Saturday, 8:30 a.m. – 5 p.m.; **Crisis Line after hours: (714) 397-6606**

**Telecare and Orange (TAO) South**

**Address:** 275 E. Baker St., Ste. A, Costa Mesa, CA 92626

**Phone:** (714) 361-6760 **Fax:** (714) 361-6768

**Language(s):** English, Spanish, French, Chinese, Vietnamese (interpretation of other languages is available upon request)

**Hours of Operation:** Monday, Wednesday, Friday, Saturday, 8 a.m. – 5 p.m.; Tuesday, Thursday, 8 a.m. – 7 p.m.; **Crisis Line after hours: (714) 673-7095**

Web Address

[www.ochealthinfo.com/bhs/about/pi/mhsa/fsp/adult/tao/](http://www.ochealthinfo.com/bhs/about/pi/mhsa/fsp/adult/tao/)



## Wayfinders Youthful Offender Wraparound (YOW), Full Service Partnership (FSP)

### Program Description

Wayfinders Youthful Offender Wraparound (YOW) provides a Full Service Partnership program for Seriously Emotionally Disturbed (SED) youth who received behavioral health services while incarcerated.

### Serving

Orange County transitional age youth ages 16–25 who are probation or former wards that have received behavioral health services while incarcerated.

### Operated by

County Contracted – Telecare and Orange

### Address

1231 E. Dyer Rd., Ste. 275, Santa Ana, CA 92705

### Phone

(714) 659-6380

### Fax

(714) 659-6379

### Web Address

[www.wearewayfinders.org](http://www.wearewayfinders.org)

### Language(s)

English, Spanish

### Hours of Operation

Monday – Friday, 8 a.m. – 8 p.m. Crisis services for enrolled clients provided 24 hours a day, 7 days a week, 365 days a year



## New Alternatives Wraparound

**Program Description**

Provide Wraparound services to referred families. Referrals are made directly from Orange County Social Services, Orange County Probation, and CYBH-HCA only. This is not an open access program

**Serving**

Youth at risk of out of home placement.

**Operated by**

County Contracted – New Alternatives

**Address**

1202 West Civic Center Drive

**Phone**

(714) 245-0045

**Fax**

(714) 245-1738

**Web Address**

[N/A](#)

**Language(s)**

English, Spanish

**Hours of Operation**

Monday – Friday, 8:30 a.m. – 5:30 p.m., additional hours are arranged with staff.



## Orange County Asian Pacific Islander Community Alliance (OCAPICA) PROJECT FOCUS – Full Service Partnership Wraparound

### Program Description

Utilizing a “whatever it takes” community-based and client-centered approach where individualized care plans are developed for individuals and families, the Full Service Partnership Wraparound program of OCAPICA provides mental health services and intensive case management services. These services include support and assistance in obtaining benefits for low-income families, health insurance, housing placements, parent education and support, tutoring, mentoring, youth recreation and leadership development.

### Serving

Orange County children, youth and transitional age youth age 0 to 25 who have serious emotional disturbances or severe mental illness with one or more of the following: homeless or at risk of homelessness, history of psychiatric hospitalizations, first psychotic episode, in danger of failing school, uninsured exiting Social Services Agency or probation system, unserved or underserved due to linguistic or cultural isolation, with special needs and/or co-occurring disorders, with parents who have serious mental illness.

### Operated by

County Contracted – Orange County Asian Pacific Islander Community Alliance

### Address

12912 Brookhurst St., Ste. 480, Garden Grove, CA 92840

### Phone

(714) 636-6286

### Fax

(714) 636-8354

### Web Address

[www.ocapica.org](http://www.ocapica.org)

### Language(s)

English, Vietnamese, Korean, Tagalog, Samoan, Cambodian, Chinese, Japanese, Hmong and other Asian Pacific Islander languages

### Hours of Operation

Monday – Friday, 9 a.m. – 5:30 p.m. Crisis services for all enrolled partners provided by Project Focus Personal Service Coordinators 24-hours a day/7-days a week.





## Adult & Older Adult Behavioral Health (AOABH) Telecare STEPS Orange County – Full Service Partnership

### Program Description

Telecare STEPS (Striving Toward Enhanced Partnerships) is the Enhanced Recovery Full Service Partnership (FSP). The program provides culturally competent and intensive field-based mental health services to adults who have severe and persistent mental illness. STEPS has a multidisciplinary team that includes a psychiatrist, nurse, housing specialist, benefit specialist, peer specialist, employment specialist, team lead and Personal Service Coordinators (PSC) and uses a “whatever it takes” approach to assist individuals gain the skills and confidence to live successfully in the community. Services include:

- Outreach and engagement
- Housing services
- 24 hours a day, 7 days a week, 365 days a year emergency response
- Employment services
- Money management /representative payee support
- Transportation
- Medication support
- Co-occurring substance use disorder services
- Benefits acquisition
- Family and peer support
- Referral and linkage

### Serving

Orange County adults with severe and persistent mental illness who are on Lanterman-Petris-Short (LPS) Act conservatorship and returning from long-term care placement, and adults who are participating in the Mental Health Assisted Intervention (AI) Court. AI Court serves mentally ill offenders who may be of questionable competence to stand trial or have low criminogenic risk/needs. Services for AI are provided through the collaborative efforts of partner agencies including HCA, AOABH, contracted providers, the Court, Public Defender’s Office, and the District Attorney’s Office. Referrals for AI form from the Mental Health Court through the Public Defender’s Office.

### Operated by

County Contracted – Telecare

### Address

2100 N. Broadway, Ste. 101, Santa Ana CA 92706

### Phone

(714) 245-6881



<b>Fax</b>	(714) 245-6891
<b>Web Address</b>	<a href="http://ochealthinfo.com/bhs/about/pi/mhsa/fsp/adult/STEPS/">http://ochealthinfo.com/bhs/about/pi/mhsa/fsp/adult/STEPS/</a>
<b>Language(s)</b>	English, Spanish, Tagalog, Arabic, French (interpretation of other languages is available upon request)
<b>Hours of Operation</b>	Monday – Friday, 8 a.m. – 5 p.m.; Friday evenings and Saturday, by appointment only; Sunday, on-call staff; <b>Crisis Line after hours: (714) 245-6881</b>



## Adult & Older Adult Behavioral Health (AOABH) Whatever It Takes (WIT) – Full Service Partnership and Collaborative Court

### Program Description

Whatever It Takes (WIT) is the Collaborative Full Service Partnership (FSP). The program provides culturally competent and intensive field-based mental health services to adults who have severe and persistent mental illness and are participating in the Mental Health WIT Court. The program offers members an opportunity to receive services in the community rather than being in jail and provides members with the services and supports needed to meet court requirements. Services are provided through the collaborative efforts of partner agencies including the Superior Court of Orange County, Probation Department, District Attorney's Office and Public Defender's Office. The program utilizes a "whatever it takes" approach in supporting members to prevent re-incarceration, hospitalization and homelessness. Services include:

- Outreach and engagement
- Housing services
- 24 hours a day, 7 days a week, 365 days a year emergency response
- Employment services
- Intensive case management
- Money management/representative payee support
- Transportation
- Medication support
- Co-occurring substance use services
- Benefits acquisition
- Family and peer support
- Referral and linkage

### Serving

Orange County adults with severe and persistent mental illness who are homeless or at risk of homelessness, on formal probation and participating in the Mental Health WIT Court. Referrals come from the Mental Health Court through the Public Defender's Office.

### Operated by

County Contracted – Telecare

### Address

1910 N. Bush Street, Santa Ana, CA 92706



<b>Phone</b>	(714) 361-7950
<b>Fax</b>	(714) 361-7966
<b>Web Address</b>	<a href="http://ochealthinfo.com/bhs/about/pi/mhsa/fsp/adult/wit/">http://ochealthinfo.com/bhs/about/pi/mhsa/fsp/adult/wit/</a>
<b>Language(s)</b>	English, Spanish, Vietnamese, Farsi (interpretation of other languages is available upon request)
<b>Hours of Operation</b>	Monday, Wednesday, Friday, Saturday, 8:30 a.m. – 5 p.m.; Tuesday, Thursday, 8:30 a.m. – 6 p.m.; <b>Crisis Line after hours: (714) 483-0367</b>



## Pathways Community Services – Project RENEW (Reaching Everyone Needing Effective Wrap), Full Service Partnership (FSP)

### Program Description

Project RENEW serves Orange County children from birth to 18 years of age with serious emotional disturbance (SED)/serious mental illness (SMI), along with their families. The program focuses on children and their families who have been unserved or underserved, are homeless or at risk of homelessness. While the child is the identified participant, Project RENEW uses a Wraparound model, developing a team of individuals offering both formal and informal support to the entire family.

### Serving

Orange County children and youth ages 0 to 18 who are severely emotionally disturbed (SED), homeless or at risk of homelessness. Eligibility includes Medi-Cal.

### Operated by

County Contracted – Pathways Community Services/Orange County Project RENEW

### Address

1360 S Anaheim Blvd., Ste. 101, Anaheim CA 92805

### Phone

(714) 689-1380

### Fax

(714) 689-1381

### Web Address

[www.pathways.com/california-pathways-community-services-locations/](http://www.pathways.com/california-pathways-community-services-locations/)

### Language(s)

English, Spanish, Vietnamese, Farsi, Korean as needed

### Hours of Operation

Monday – Friday, 9 a.m. – 5 p.m.; Crisis services for enrolled clients provided 24 hours a day, 7 days a week, 365 days a year



## Pathways Community Services – Support Transitional Age Youth (STAY), Full Service Partnership (FSP)

### Program Description

Pathways Community Services – Support Transitional Age Youth (STAY) is a recovery program for seriously emotionally disturbed (SED) and seriously mentally ill (SMI) transition age youth (TAY) ages 16 through 25 who would benefit from increased integration into the community and support that builds the skills essential to being a self-sufficient adult. Founded with a vision that all TAY have hope, are empowered, can be responsible for themselves and be engaged to meaningful adult roles, the program supports participants in discovering and deciding what they want for themselves and how to develop the strengths, abilities and skills applicable to many aspects of their adult lives.

### Serving

Orange County transitional age youth age 16-25 who are SMI or SED, homeless or at risk of homelessness.

### Operated by

County Contracted – Pathways Community Services/Orange County Support Transitional Age Youth

### Address

1401 N Tustin Ave., Ste. 225, Santa Ana, CA 92705

### Phone

(714) 221-6400

### Fax

(714) 221-6402

### Web Address

[www.pathways.com/california-pathways-community-services-locations/](http://www.pathways.com/california-pathways-community-services-locations/)

### Language(s)

English, Spanish, Vietnamese, Farsi, Korean

### Hours of Operation

Monday – Friday, 9 a.m. – 5 p.m.; Crisis services for clients provided 24 hours a day, 7 days a week, 365 days a year



## Older Adult Support Intervention Systems (OASIS) – Full Service Partnership

### Program Description

Older Adult Support Intervention Systems (OASIS) is an Older Adult Full Service Partnership Program that serves adults age 60 and over with chronic mental illness who are homeless or at risk of homelessness. Services include intensive case management/wraparound services, community based outpatient services, peer mentoring, housing supports, transportation services, benefit acquisition, supported employment/education services, linkage to primary health care and services for co-occurring disorder. OASIS provides an integrated team to develop plans for the client and provide the full spectrum of community services so that clients can reach their identified goals. Services are provided at the facility or in the field at client-friendly locations. The program is linguistically and culturally capable of providing services to the underserved ethnic populations in Orange County, including Vietnamese and Spanish-speaking individuals.

### Serving

Orange County adults age 60 years and older who are chronically mentally ill, homeless or in imminent risk of homelessness. May or may not be dually diagnosed.

### Operated by

County Contracted – Pathways

### Address

1855 West Katella Ave., Orange, CA 92867

### Phone

(714) 399-3480

### Fax

(714) 399-3481

### Web Address

[www.ochealthinfo.com/bhs/about/pi/mhsa/fsp/older/](http://www.ochealthinfo.com/bhs/about/pi/mhsa/fsp/older/)

### Language(s)

English, Spanish, Vietnamese, Farsi, Tagalog

### Hours of Operation

Monday – Friday, 8 a.m. – 5 p.m.



## Adult & Older Adult Behavioral Health (AOABH) Opportunity Knocks (OK) – Full Service Partnership

### Program Description

Opportunity Knocks is the Criminal Justice Full Service Partnership (FSP). The program serves adults with severe and persistent mental illness who have recent history of incarceration, and/or are experiencing recidivism within the criminal justice system. The program provides culturally competent and intensive field-based mental health services, uses the Recovery Model and focuses on individual strengths. The program works closely with Orange County jails and Probation to provide a wide range of recovery services and supports to individuals to prevent re-incarceration, hospitalization and homelessness. The program uses a multi-disciplinary team approach to a service delivery in order to best meet the needs of clients. Services include:

- Outreach and engagement
- Housing services
- 24 hours a day, 7 days a week, 365 days a year emergency response
- Employment services
- Intensive case management
- Money management/representative payee support
- Transportation
- Medication support
- Co-occurring substance use services
- Benefits acquisition
- Family and peer support
- Referral and linkage

### Serving

Orange County adults who have severe and persistent mental illness, and are homeless or at risk of homelessness, unserved or underserved, and have a recent history of incarceration and/or experience recidivism within the criminal justice system.

### Operated by

County Contracted – Pathways Community Services

### Address

11277 Garden Grove Blvd., Ste. 100, Garden Grove, CA 92843

### Phone

(714) 620-8131

### Fax

(714) 620-8132





**Web Address**

<http://ochealthinfo.com/bhs/about/pi/mhsa/fsp/adult/ok/>

**Language(s)**

English, Spanish, Vietnamese (interpretation of other languages is available upon request)

**Hours of Operation**

Monday, Tuesday, Wednesday, Friday, 8 a.m. – 5 p.m.; Thursday, 8 a.m. – 7 p.m.; **Crisis Line after hours: (714) 620-8131**



## Adult & Older Adult Behavioral Health (AOABH) Collaborative Courts – Drug Court and Driving-Under-the-Influence (DUI) Court

### Program Description

**The Drug Court Program:** is a highly intensive outpatient drug and alcohol rehabilitation program for individuals with felony drug charges facing prison time. This program is a minimum of 18 months and includes individual treatment, group treatment, drug/alcohol education, drug/ alcohol testing, formal probation and frequent progress reviews with the assigned Drug Court Bench Officer and Court Team.

**The DUI Court Program:** is a highly intensive outpatient alcohol rehabilitation program for individuals with multiple misdemeanor DUI's. This program is a minimum of 12 months and includes individual treatment, group treatment, drug/alcohol education, drug/alcohol testing, formal probation and frequent progress reviews with the assigned DUI Court Bench Officer and Court Team.

### Operated by

#### North Drug Court & Driving-Under-the-Influence (DUI) Court

**Serving:** Adults in North Orange County (Anaheim, Atwood, Brea, Buena Park, Fullerton, Garden Grove, La Habra, La Palma, Placentia, Cypress, Los Alamitos, Seal Beach and Yorba Linda) who are referred by Superior Court

**Address:** 2035 E. Ball Rd., Ste. 100A, Anaheim, CA 92805

**Phone:** (714) 517-6140    **Fax:** (714) 517-6169

**Language(s):** English, Spanish

**Hours of Operation:** Monday, Wednesday, 8 a.m. – 8 p.m.;  
Thursday, 8 a.m. – 6 p.m.; Friday, 8 a.m. – 5 p.m.

#### South Drug Court & Driving-Under-the-Influence (DUI) Court

**Serving:** Adults in South Orange County (Aliso Viejo, Corona del Mar, Dana Point, Lake Forest, Laguna Hills, Mission Viejo, Laguna Beach, Laguna Niguel, San Clemente and San Juan Capistrano) who are referred by Superior Court

**Address:** 5 Mareblu, Ste. 100, Aliso Viejo, CA 92656

**Phone:** (949) 643-6930    **Fax:** (949) 362-5834

**Language(s):** English, Spanish

**Hours of Operation:** Monday, Tuesday, 8 a.m. – 6:30 p.m.;  
Wednesday, 8:30 a.m. – 8 p.m.; Thursday, Friday, 8 a.m. – 5 p.m.



**Web Address**

**Harbor Drug Court & Driving-Under-the-Influence (DUI) Court**

**Serving:** Adults in the Newport Mesa area of Orange County (Balboa, Costa Mesa, Irvine and Newport Beach) who are referred by Superior Court

**Address:** 3115 Red Hill, Costa Mesa, CA 92626

**Phone:** (714) 850-8431     **Fax:** (714) 850-8492

**Language(s):** English, Spanish

**Hours of Operation:** Monday, 6 a.m. – 7 p.m.; Tuesday-Friday, 8 a.m. – 5 p.m.

**Central Drug Court & Driving-Under-the-Influence (DUI) Court**

**Serving:** Adults in East Orange County (El Modena, Lemon Heights, Orange, Santa Ana, Tustin, and Villa Park) who are referred by Superior Court

**Address:** 401 W. Civic Center Drive, Suite 500 Santa Ana, CA 92701

**Phone:** (714) 480-6650     **Fax:** (714) 571-5659

**Language(s):** English, Spanish, Vietnamese

**Hours of Operation:** Monday and Wednesday, 8 a.m. – 8 p.m.; Tuesday, Thursday, and Friday 8 a.m. – 5 p.m

[www.ochealthinfo.com/bhs/about/adult\\_and\\_older\\_adult\\_behavioral\\_health\\_services/clinics](http://www.ochealthinfo.com/bhs/about/adult_and_older_adult_behavioral_health_services/clinics)





# INPATIENT

## Adult & Older Adult Behavioral Health (AOABH) Acute Psychiatric Inpatient Treatment

### Program Description

This acute psychiatric inpatient hospital program provides assessment, treatment and stabilization for individuals in crisis. Treatment may include medications in conjunction with group and activities therapies, in addition to discharge planning for aftercare.

### Serving

Orange County residents age 18 and older who require acute psychiatric inpatient treatment in a secured setting. Adults may access services directly or can be referred from other county outpatient programs. Eligibility includes Medi-Cal, Medicare and private insurance.

### Operated by

#### County Contracted – Anaheim Global Medical Center

**Address:** 1025 S. Anaheim Blvd., Anaheim, CA 92805

**Phone:** (714) 834-6900 for referral by HCA Crisis Stabilization Unit (CSU)

**Web Address:** <https://anaheim-gmc.com>

#### County Contracted – Orange County Global Medical Center

**Address:** 1001 N. Tustin Ave., Santa Ana, CA 92705

**Phone:** (714) 953-3500

**Web Address:** <https://orangecountyglobalmedicalcenter.com/>

#### County Contracted – Huntington Beach Hospital

**Address:** 17772 Beach Blvd., Huntington Beach, CA 92647

**Phone:** (714) 843-5000

**Web Address:** [www.hbhospital.org](http://www.hbhospital.org)

#### County Contracted – College Hospital Costa Mesa

**Address:** 301 Victoria St., Costa Mesa, CA 92627

**Phone:** (714) 834-6900 for referral by HCA Crisis Stabilization Unit (CSU)

**Web Address:** [www.collegehospitals.com](http://www.collegehospitals.com)

#### County Contracted – UCI Medical Center

**Address:** 101 The City Drive South, Orange, CA 92868

**Phone:** (714) 834-6900 for referral by HCA Crisis Stabilization Unit (CSU)

**Web Address:** [www.ucirvinehealth.org/medical-services/psychiatry](http://www.ucirvinehealth.org/medical-services/psychiatry)

#### County Contracted – Royale Therapeutic Residential Center.

Serves Orange County residents age 18 and older referred from the County Crisis Stabilization Unit who require acute psychiatric inpatient treatment in a secured setting.

**Address:** 1030 Warner Ave., Santa Ana, CA 92707

**Phone:** (714) 834-6900 for referral by HCA Crisis Stabilization Unit



(CSU)

**Web Address:** [www.royaletrc.com](http://www.royaletrc.com)

**County Contracted – College Hospital Crisis Stabilization Unit. (CSU)**

Serves Orange County residents age 18 and older who are Medi-Cal beneficiaries or those without insurance as resources permit.

**Address:** 301 Victoria Street, Costa Mesa, CA 92627

**Phone:** (800) 773-8001

**Web Address:** <http://www.collegehospitals.com>

**Language(s)**

English, Spanish,

**Hours of Operation**

24 hours a day, 7 days a week, 365 days a year



## Adult & Older Adult Behavioral Health (AOABH) Acute Psychiatric Inpatient Treatment

### Program Description

This facility is a licensed Skilled Nursing Facility (SNF) providing 27 hours per week Specialized Treatment Program (STP) focused on helping clients develop the skills needed to return to a community environment. Medication management and other adjunctive therapies are utilized.

### Serving

Orange County residents on Public Guardian or Private Conservatorship ages 18 to 65 who require psychiatric treatment for an extended period of time in a secured setting. Eligibility includes Medi-Cal and/or Medicare beneficiaries with Supplemental Security Income (SSI) and/or Social Security Disability Income (SSDI). Referrals are made by County staff.

### Operated by

#### **County Contracted – Royale Therapeutic Residential Center**

**Address:** 1030 W. Warner Ave., Santa Ana, CA 92707

**Phone:** (714) 834-2780 for referral

**Web Address:** [tpwww.royaletrc.com](http://www.royaletrc.com)

#### **County Contracted – West Anaheim Therapeutic Residential Center**

**Address:** 645 S. Beach Blvd., Anaheim, CA 92804

**Phone:** (714) 834-2780 for referral

**Web Address:** N/A

#### **County Contracted – Westminster Therapeutic Residential Center**

**Address:** 206 Hospital Circle, Westminster, CA 92683

**Phone:** (714) 834-2780 for referral

**Web Address:** N/A

#### **County Contracted – Community Care Center**

**Address:** 2335 S. Mountain Ave., Duarte, CA 91010

**Phone:** (714) 834-2780 for referral

**Web Address:** N/A

#### **County Contracted – Downey Community Health Center**

**Address:** 8425 Iowa St., Downey, CA 90242

**Phone:** (714) 834-2780 for referral

**Web Address:** [www.downeycommunityhealthcenter.com](http://www.downeycommunityhealthcenter.com)



**County Contracted – Landmark Medical Center**

**Address:** 2020 N. Garey Ave., Pomona, CA 91767

**Phone:** (714) 834-2780 for referral

**Web Address:**

[www.landmarkmedicalcenter.net/Landmark\\_Medical\\_Center](http://www.landmarkmedicalcenter.net/Landmark_Medical_Center)

**Operated by: County Contracted – Riverside Health Care Center**

**Address:** 4580 Palm Dr., Riverside, CA 92501

**Phone:** (714) 834-2780 for referral

**Web Address:** [www.riversidehealthcare.org/](http://www.riversidehealthcare.org/)

**County Contracted – Sylmar Health and Rehabilitation Center**

**Address:** 12220 Foothill Blvd., Sylmar, CA 91342

**Phone:** (714) 834-2780 for referral

**Web Address:** N/A

**County Contracted – Sierra Vista**

**Address:** 3455 E. Highland Ave., San Bernardino, CA 92346

**Phone:** (714) 834-2780 for referral

**Web Address:** [www.genesishcc.com/SierraVista](http://www.genesishcc.com/SierraVista)

**County Contracted – Vista Knoll.** In addition to the above services, this facility provides a Neurological Behavior Care Unit focused on assessing, diagnosing, and treating medical conditions thus clients must have a medical issue that warrants Skilled Nursing Care.

**Address:** 2000 Westwood Rd., Vista, CA 92083

**Phone:** (714) 834-2780 for referral

**Web Address:** [www.vistaknoll.com](http://www.vistaknoll.com)

**Language(s)**

English, Spanish, Vietnamese, Farsi

**Hours of Operation**

24 hours a day, 7 days a week, 365 days a year





## Adult & Older Adult Behavioral Health (AOABH) Mental Health Rehabilitation Center

### Program Description

This is an 80-bed long-term care facility providing individualized treatment programs designed to maximize recovery and foster skills to facilitate a return to community living. Treatment modalities include medication, group, individual and recreational therapies with a strong emphasis on development of vocational skills. Fifteen of the 80 beds are identified as the Telecare Striving Toward Enhanced Partnerships (STEPs) program and these individuals receive targeted case management wrap around services to assist with acclimation to community living from an Institute for Mental Disease (IMD) or other long-term care facility.

### Serving

Orange County residents on Public Guardian or Private Conservatorship ages 18 to 65, requiring psychiatric treatment for an extended period in a secured setting. Eligibility includes Medi-Cal and/or Medicare beneficiaries with Supplemental Security Income (SSI) and/or Social Security Disability Income (SSDI). Referrals are made by County staff.

### Operated by

County Contracted – Royale Mission Viejo Mental Health Rehabilitation Center

### Address

23228 Madero, Mission Viejo, CA 92691

### Phone

(714) 834-2780 for referral

### Fax

(714) 399-3481

### Web Address

[www.royaletrc.com/](http://www.royaletrc.com/)

### Language(s)

English, Spanish, Vietnamese, Farsi

### Hours of Operation

24 hours a day, 7 days a week, 365 days a year



## Adult & Older Adult Behavioral Health (AOABH) State Hospital

### Program Description

The Department of State Hospitals (DHS) manages the California state hospital system which provides mental health services to patients admitted into Five DSH facilities including; Atascadero, Coalinga, Metropolitan, Napa and Patton. The programs provide intensive and individualized treatment (including medication management, and individual and group activities therapies) focused on maximizing recovery and helping clients to develop the skills needed to return to a community setting. Metropolitan State Hospital is a tobacco-free facility.

### Serving

Orange County residents who are forensically and civilly committed including those on LPS Public Guardian or Private Conservatorship, ages 18 and older, requiring intensive psychiatric treatment for an extended period in a secured setting. Referrals are made by County staff and through the court system.

### Operated by

#### **Operated by: County Contracted – Metropolitan State Hospital**

**Address:** 11401 S. Bloomfield Ave., Norwalk, CA 90650

**Phone:** (714) 834-2780 for referral

**Web Address:** [www.dsh.ca.gov/Metropolitan](http://www.dsh.ca.gov/Metropolitan)

**Language(s):** English, Spanish, Vietnamese, Farsi

**Hours of Operation:** 24 hours a day, 7 days a week, 365 days a year

#### **Operated by: County Contracted – Patton State Hospital**

**Address:** 3102 E. Highland Ave., Patton, CA 92369

**Phone:** (714) 834-2780 for referral

**Web Address:** [www.dsh.ca.gov/patton](http://www.dsh.ca.gov/patton)

**Language(s):** English, Spanish, Vietnamese, Farsi

**Hours of Operation:** 24 hours a day, 7 days a week, 365 days a year

#### **Operated by: County Contracted – Napa State Hospital**

**Address:** 2100 Napa Vallejo Hwy., Napa, CA 94558

**Phone:** (714) 834-2780 for referral

**Web Address:** [www.dsh.ca.gov/napa/](http://www.dsh.ca.gov/napa/)

**Language(s):** English, Spanish, Vietnamese, Farsi

**Hours of Operation:** 24 hours a day, 7 days a week, 365 days a year



## South Coast Children's Society (Social Rehabilitation Program)

### Program Description

The Social Rehabilitation Program assists transitional age youth (TAY) with serious mental illness by providing an established daily living routine, usually after a psychiatric hospitalization. The anticipated length of stay is two to four months, and the program works closely with the full service partnership in which the TAY is enrolled.

### Serving

Orange County residents ages 18 to 25 in need of short-term housing and behavioral health services support. A fee is required from the placing full service partnership, the client, or the client's family.

### Operated by

County Contracted – South Coast Children's Society

### Address

145 Kalmus Dr., Costa Mesa 92868

### Phone

(714) 966-5338

### Fax

(714) 545-4180

### Web Address

[www.sccs4kids.org](http://www.sccs4kids.org)

### Language(s)

English, Spanish

### Hours of Operation

24 hours a day, 7 days a week, 365 days a year



## Adult & Older Adult Behavioral Health (AOABH) Medical Detox

### Program Description

Is a freestanding Chemical Dependency Recovery Hospital providing a comprehensive system of care including medical detoxification from alcohol and other drugs and residential services.

### Serving

Adult men and women.

### Operated by

#### **County Contracted – American Recovery**

**Address:** 2180 W. Valley Blvd., Pomona, CA 91768

**Phone:** (909) 865-2336      **Fax:** (909) 865-1831

**Web address:** [www.bhs-inc.org](http://www.bhs-inc.org)

**Language(s):** Human Resources has a list of bilingual staff for each facility. They also utilize Interpreter Services when necessary.

**Hours of Operation:** Monday-Sunday, 8 a.m.-10 p.m.

#### **County Contracted – Redgate Memorial Recovery Center**

**Address:** 1775 North Chestnut, Long Beach, CA 90813

**Phone:** (561) 599-8444      **Fax:** (562) 591-6134

**Web address:** [www.dsh.ca.gov/patton](http://www.dsh.ca.gov/patton)

**Language(s):** Human Resources has a list of bilingual staff for each facility. They also utilize Interpreter Services when necessary

**Hours of Operation:** Monday – Sunday, 7:30 a.m. – 9:30 p.m.





# RESIDENTIAL TREATMENT

## Adult & Older Adult Behavioral Health (AOABH) Coastal Telecare Recovery Station

### Program Description

Telecare Recovery Station provides a safe place for adults to sober from alcohol and/or drugs and begin discussions about options and possibilities to change through links to treatment and community-based resources. It is a voluntary, short stay program that provides screening, intake, monitoring, engagement, ancillary services, discharge planning, and linkage.

### Serving

Adults 18 and older

### Operated by

County Contracted

### Address

265 S. Anita Drive, Suite 101, Orange, CA 92868

### Phone

(657) 933-4101 FAX: (657) 933-4102

### Web Address

<https://www.telecarecorp.com>

### Language(s)

English, additional languages TBD, contactor shall include bilingual/bicultural services to meet the needs of threshold languages as determined by County.

### Hours of Operation

24 hours a day, 7 days a week, 365 days a year



## Adult & Older Adult Behavioral Health (AOABH)

### Telecare Recovery Station Be Well Orange

#### Program Description

12 cot recovery station for individuals who are intoxicated and need supportive services to recover. Available linkage to SUDs Services.

#### Serving

Orange County residents, Adults 18 and older, funded or unfunded.

#### Operated by

County Contracted

#### Address

265 S. Anita Drive, Suite 106, Orange, CA 92868

#### Phone

(657) 933-4101 FAX: (657) 933-4102

#### Web Address

<https://www.telecarecorp.com>

#### Language(s)

English, Spanish

#### Hours of Operation

24 hours a day, 7 days a week, 365 days a year



## Adult & Older Adult Behavioral Health (AOABH) Coastal Star Crisis Residential Treatment

### Program Description

The Adult Crisis Residential program in the Central Region provides services to Orange County Residents 18 years and over. Crisis Residential services provides positive, temporary alternative for people experiencing acute psychiatric episodes or intense emotional distress who might otherwise face voluntary or involuntary inpatient treatment. Program will provide crisis intervention, therapy, medication monitoring and evaluation to determine the need and intensity of additional services within a framework of evidence based and trauma-informed approaches to recovery planning, including a rich peer support component. The program will include treatment for co-occurring disorders. The programs emphasize mastery of daily living skills and social development using strength –based approaches that support recovery and wellness. The residential settings create solid links to the continuum of care with emphasis on housing supports and linkages that will ease the transitions into independent living and prevent recidivism. Program operates 24/7, 365 days a year.

### Serving

Orange County residents ages 18 and over.

### Operated by

County Contracted

### Address

401 South Tustin Street, Building B, Orange, CA 92866

### Phone

(714) 289-3936 FAX: (714) 289-3938

### Web Address

[www.starsinc.com/coastal-star-crisis-residential-central](http://www.starsinc.com/coastal-star-crisis-residential-central)

### Language(s)

English, (additional languages TBD) CONTRACTOR shall include bilingual/bicultural services to meet the needs of threshold languages as determined by COUNTY.

### Hours of Operation

24 hours a day, 7 days a week, 365 days a year





## Adult & Older Adult Behavioral Health (AOABH) Residential Treatment

### Program Description

Residential treatment substance use and/or co-occurring mental health treatment program for up to 90 days. Program addresses behaviors and emotions behind addiction. Treatment includes individual therapy, group therapy, and education about addiction.

### Serving

Adult Men and Women. Program offers a sliding scale. Requires pre-authorization by County Residential staff.

### Operated by

#### County Contracted – Gerry House

**Address:** 1225 W. 6th St., Santa Ana, CA 92703

**Phone:** (714) 972-1402 **Fax:** (714) 972-1519

**Language(s):** English 24 hours

#### County Contracted – Hope House

**Address:** 707 N. Anaheim Blvd., Anaheim, CA 92805

**Phone:** (714) 776-7490 **Fax:** (714) 776-8650

**Web address:** [www.hopehouseoc.com](http://www.hopehouseoc.com)

**Language(s):** English

#### County Contracted – Phoenix House

**Address:** 1207 E. Fruit S., Santa Ana, CA 92701

**Phone:** (714) 953-9373 **Fax:** (714) 953-7573

**Web address:** [www.phoenixhouse.org](http://www.phoenixhouse.org)

**Language(s):** English

#### County Contracted – Woodglen Recovery Junction

**Address:** 771 W. Orangethorpe, Fullerton, CA 92632

**Phone:** (714) 879-0929 **Fax:** (714) 578-2960

**Web Address:** [www.woodglenrecovery.org](http://www.woodglenrecovery.org)

**Language(s):** English

### Hours of Operation

24 hours a day, 7 days a week, 365 days a year



## Adult & Older Adult Behavioral Health (AOABH) Residential Treatment

### Program Description

Anne Sippi is a residential care facility that provides medication management, individual and group psychotherapy and recreational therapies combined in an individualized treatment program with the goal of helping clients to develop the skills needed for independent community living.

### Serving

Orange County residents ages 18 to 65 who require psychiatric treatment for an extended period of time in a highly structured residential setting. Eligibility includes Supplemental Security Income (SSI) and Social Security Disability Insurance (SSDI) beneficiaries with Medi-Cal and/or Medicare as well as private pay patients. Referrals are made by County Long Term Care staff.

### Operated by

County Contracted – Anne Sippi Clinic

### Address

2457 Endicott St., Los Angeles, CA 90032

### Phone

(714) 834-2780 for referral

### Web Address

[www.schizophrenia-help.com](http://www.schizophrenia-help.com)

### Language(s)

English, Spanish, Vietnamese, Farsi

### Hours of Operation

24 hours a day, 7 days a week, 365 days a year



## Adult & Older Adult Behavioral Health (AOABH) Clean Path Behavioral Health

### Program Description

This is a Drug Medi-Cal (DMC) county contracted residential Substance Use Disorder Program, ASAM level 3.1 and 3.5. Clients are required to complete a minimum of five clinical hours of treatment per week.

### Serving

Drug Medi-Cal (DMC), Insurance, Women must be 18 years old or over, the perinatal program serves children up to 12 years old.

### Operated by

County Contracted

### Address

2201 Kilson Drive, Santa Ana, CA 92707

### Phone

(949) 734-7432 Fax: (949) 734-7433

### Web Address

<https://cleanpathrecovery.com>

### Language(s)

English

### Hours of Operation

Monday – Friday, 24/7 hours



## Adult & Older Adult Behavioral Health (AOABH) Social Model Detox

### Program Description

The program provides residential, social model, non-medical detoxification services. Services are provided around-the-clock in a clean, supportive, and calm environment and monitored by experienced, certified staff. Social Model Detox refers to the primary phase of drug and alcohol treatment, in which the process of withdrawal from the relevant substance(s) is monitored, supervised, and managed without the use of detoxification medication.

### Serving

Orange County residents age 18 and over. Most PPO insurance is accepted, as are private-pay clients. Programs also offers sliding scale beds through the OC Health Care Agency. No one is denied services due to inability to pay.

### Operated by

**County Contracted – The With Address:** 10936

Dale Ave., Stanton, CA 90680 **Phone:** (714)

839-9798

**Fax:** (714) 952-4075

**Web Address:** <http://www.roquecenter.org>

**County Contracted – Woodglen Recovery Junction**

**Address:** 772 W. Orangethorpe, Fullerton, CA 92632

**Phone:** (714) 879-2741 **Fax:** (714) 578-2960

**Web Address:** [www.woodglenrecovery.org](http://www.woodglenrecovery.org)

### Language(s)

English

### Hours of Operation

24 hours a day, 7 days a week, 365 days a year



## Adult & Older Adult Behavioral Health (AOABH) Clean Path Behavioral Health

### Program Description

This is a Drug Medi-Cal (DMC) county contracted residential Substance Use Disorder Program, ASAM level 3.1 and 3.5. Clients are required to complete a minimum of five clinical hours of treatment per week.

### Serving

Drug Medi-Cal (DMC), Insurance, Women must be 18 years old or over, the perinatal program serves children up to 12 years old.

### Operated by

County Contracted

### Address

2201 Kilson Drive, Santa Ana, CA 92707

### Phone

(949) 734-7432 Fax: (949) 734-7433

### Web Address

<https://cleanpathrecovery.com>

### Language(s)

English

### Hours of Operation

Monday – Friday, 24/7 hours



## Adult & Older Adult Behavioral Health (AOABH) Vera's Sanctuary – The Teen Project

### Program Description

The mission of Vera's Sanctuary is to provide healing and hope to young women who have survived human trafficking and homelessness, many from foster care, by innovating programs focused on drug treatment, psychotherapy; life skills, higher education and mentoring all with a trauma-informed lens. Vera's Sanctuary has 18 beds on-site. We provide residential treatment for women, including those who are pregnant and addicted needing services. The program includes 42 hours of weekly therapeutic services, including groups, individual counseling and case management. The young women residing with us received everything they need to get their lives back on track from therapy to high school and vocational education to job training and internships.

### Serving

Serve women between the ages of 18-35 that have been victims or human trafficking along with women that require help with substance abuse.

### Operated by

County Contracted

### Address

Address is kept private; program serves a sensitive population.

### Phone

800-685-7460 Fax: (818) 582-8832

### Web Address

<https://theteenproject.com/veras-sanctuary>

### Language(s)

English & Spanish

### Hours of Operation

Monday – Friday, 8 am – 5 pm, Residential services provide 24/7 hours

His h



## Adult & Older Adult Behavioral Health (AOABH) Continuum of Care *(formerly known as Shelter Plus Care)*

### Program Description

Part of the Health Care Agency's (HCA) Adult and Older Adult Behavioral Health (AOABH) Residential Services Program. Continuum of Care is a permanent supportive housing rental assistance for homeless persons disabled due to mental illness, substance abuse, and/or HIV/AIDS, and have very low income. This program is a "Housing First" model program and is a collaboration between HCA and the Orange County Housing Authority.

### Serving

Orange County residents age 18 and older and are linked with and referred from the AOABH County and/or County-contracted clinics, Full Services Partnership (FSP) Programs, or designated County staff. Applications are accepted on a continuous basis.

### Operated by

County of Orange, Health Care Agency

### Address

405 W. 5th St., Ste. 211, Santa Ana, CA 92701

### Phone

(714) 796-0200 for referral by or eligibility information from the Residential Services Office

### Web Address

[www.ochealthinfo.com/bhs/about/aoabh](http://www.ochealthinfo.com/bhs/about/aoabh)

### Language(s)

English, Spanish, Vietnamese (provided by referring Care Coordinators)

### Hours of Operation

24 hours a day, 7 days a week, 365 days a year



## NAdult & Older Adult Behavioral Health (AOABH)

### His House

#### Program Description

Residential treatment facility for males. Treatment for substance use disorders. 3.1 and 3.5 ASAM designation. Participants may stay up to 90 days. .

#### Serving

Male Medi Cal beneficiaries with substance use disorders

#### Operated by

County of Orange, Health Care Agency

#### Address

239 W. 9<sup>th</sup> St., Units A & B, Upland, CA 91786-5910

#### Phone

(909) 981-6121

Fax: (909) 912-8041

#### Web Address

[hishousenewcreation.com](http://hishousenewcreation.com)

#### Language(s)

English

#### Hours of Operation

24 hours a day, 7 days a week, 365 days a year





## Adult & Older Adult Behavioral Health (AOABH)

### New Creation

#### Program Description

Residential treatment facility for females. Treatment for substance use disorders. 3.1. and 3.5 ASAM designation. Participants may stay up to 90 days

#### Serving

Female Medi-Cal beneficiaries with substance use disorder.

#### Operated by

County of Orange, Health Care Agency

#### Address

23950 Prado Lane and 11646 Encanto Lane, Colton, CA 92324-9734

#### Phone

(909) 514-1958  
FAX: (909) 912-8011

#### Web Address

[hishousenewcreation.com](http://hishousenewcreation.com)

#### Language(s)

English

#### Hours of Operation

24 hours a day, 7 days a week, 365 days a year





# HOUSING

## Adult & Older Adult Behavioral Health (AOABH) Continuum of Care *(formerly known as Shelter Plus Care)*

### Program Description

Part of the Health Care Agency's (HCA) Adult and Older Adult Behavioral Health (AOABH) Residential Services Program. Continuum of Care is a permanent supportive housing rental assistance for homeless persons disabled due to mental illness, substance abuse, and/or HIV/AIDS, and have very low income. This program is a "Housing First" model program and is a collaboration between HCA and the Orange County Housing Authority.

### Serving

Orange County residents age 18 and older and are linked with and referred from the AOABH County and/or County-contracted clinics, Full Services Partnership (FSP) Programs, or designated County staff. Applications are accepted on a continuous basis.

### Operated by

County of Orange, Health Care Agency

### Address

405 W. 5th St., Ste. 211, Santa Ana, CA 92701

### Phone

(714) 796-0200 for referral by or eligibility information from the Residential Services Office

### Web Address

[www.ochealthinfo.com/bhs/about/aoabh](http://www.ochealthinfo.com/bhs/about/aoabh)

### Language(s)

English, Spanish, Vietnamese (provided by referring Care Coordinators)

### Hours of Operation

24 hours a day, 7 days a week, 365 days a year



## Adult & Older Adult Behavioral Health (AOABH) Short Term Housing Services

### Program Description

The Short-Term Housing program provides temporary emergency shelter to clients experiencing homelessness who are currently linked with AOABH's County or Contracted clinics. Clients must have a proposed housing plan developed in partnership with their Plan Coordinator to work toward the goal of securing permanent housing.

### Serving

Orange County residents age 18 and older who have no means for securing housing, and are currently linked with and referred from county-operated adult outpatient clinics or county-contracted adult outpatient clinics.

### Operated by

County Contracted – The Friendship Shelter, Grandma's House of Hope, and Colette's Children's Home.

### Address

405 W. 5th St., Ste. 211, Santa Ana, CA 92701

### Phone

(714) 796-0200 for referral by or eligibility information from the Residential Services Office

### Web Address

[www.ochealthinfo.com/bhs/about/aoabh](http://www.ochealthinfo.com/bhs/about/aoabh)

### Language(s)

English, Spanish, Vietnamese (provided by referring case managers)

### Hours of Operation

24 hours a day, 7 days a week, 365 days a year



## Adult & Older Adult Behavioral Health (AOABH) Residential Rehabilitation

### Program Description

Provided within licensed community care facilities, the Residential Rehabilitation program focuses on individual-centered rehabilitative mental health services which include behavioral management services, social skills training, vocational and pre-vocational activities, physical activities, individual and group recreational outings, the planning and implementation of client-driven goals, transportation to essential appointments and medication support services. Residents transition to less intensive settings within 18 months of admission.

### Serving

Orange County residents age 18 and older referred from Health Care Agency clinics, hospitals working with Health Care Agency staff, and/or the Public Guardian.

### Operated by

County Contracted:

- BMD ResCare, Inc.: Caring Village, Anaheim and Palm Village, Garden Grove
- Founder's House of Hope, Inc., Artesia
- Leisure Tower II, Anaheim
- Stanford Homes, Inc., Anaheim

### Phone

(714) 796-0200 for referral by or eligibility information from the Residential Care and Housing Office.

### Web Address

[www.ochealthinfo.com/bhs/about/aoabh](http://www.ochealthinfo.com/bhs/about/aoabh)

### Language(s)

English, Spanish, Tagalog

### Hours of Operation

24 hours a day, 7 days a week, 365 days a year



## Adult & Older Adult Behavioral Health (AOABH) Mental Health Services Act (MHSA) Housing Services

### Program Description

The Mental Health Services Act (MHSA) Housing program provides supportive housing apartment units at multiple sites throughout the County for individuals with serious and persistent mental illness who are homelessness or at risk of homelessness. Collaborations between the Orange County Housing Authority, Health Care Agency, various developers and property managers have created 146 units thus far with more in development.

### Serving

Orange County residents age 18 and older who are experiencing homelessness, have no means for securing housing, and are currently linked with and referred from county-operated adult outpatient clinics, county-contracted adult outpatient clinics, or Full Services Partnership (FSP) Programs.

### Operated by

Apartment units are operated by various property managers

### Address

405 W. 5th St., Ste. 211, Santa Ana, CA 92701

### Phone

(714) 796-0200 for referral by or eligibility information from the Residential Services Office

### Web Address

[www.ochealthinfo.com/bhs/about/aoabh](http://www.ochealthinfo.com/bhs/about/aoabh)

### Language(s)

English, Spanish, Vietnamese (provided by referring case managers)

### Hours of Operation

24 hours a day, 7 days a week, 365 days a year





# RECOVERY & SUPPORTIVE SERVICES

## Adult & Older Adult Behavioral Health (AOABH) Peer Support and Wellness Centers

### Program Description

The Peer Support and Wellness Centers (also known as The Wellness Centers) provides services at three Orange County locations to adults, 18 years of age and older, who have been diagnosed with a serious mental illness, may also have a co-occurring substance use disorder, and have demonstrated progress in their recovery. The Wellness Centers assists individuals in their personal growth and development, and in minimizing the stigma associated with their mental health conditions. Activities are designed to encourage and empower members to seek interests and passions outside of the adult system of care, and offer a pathway for full integration back into the community. Services include, but are not limited to, group and individual activities, classes and workshops, indoor recreation and community involvement. The program also encourages creation and maintenance of an outdoor garden, health and well-being, and relationship building. Assistance is also offered with employment readiness, job searching, educational opportunities, setting employment and educational goals, identifying volunteer or paid employment opportunities.

### Serving

All three Wellness Centers serve Orange County adult residents age 18 and older who have a current or past history of receiving mental health services for a serious and persistent mental illness, and may also have a co-occurring substance use disorder.

### Location(s)

#### **WELLNESS CENTER CENTRAL**

**Operated by: County Contracted – College Community Services**

**Address:** 401 S. Tustin Ave., Bldg. C, Orange CA 92866

**Phone:** (714) 361-4860 **Fax:** (714) 361-4861

**Web Address:** [www.wellnesscenteroc.com](http://www.wellnesscenteroc.com)

**Language(s):** English, Spanish, Vietnamese, Farsi, Korean

**Hours of Operation:** Monday – Thursday, 9 a.m. – 5 p.m.;

Friday, 9 a.m. – 8 p.m.; Saturday, 9 a.m. – 5 p.m.





### **WELLNESS CENTER SOUTH**

**Operated by: County Contracted – Mental Health Association**

**Address:** 23072 Lake Center Dr., Ste. #115,  
Lake Forest, CA 92630

**Phone:** (949) 528-6822 **Fax:** (949) 900-1767

**Web Address:** [www.mhaoc.org](http://www.mhaoc.org)

**Language(s):** English, Spanish, Vietnamese, Farsi, Korean

**Hours of Operation:** Monday–Thursday, 9 a.m.–5 p.m.;  
Friday, 9 a.m.–7 p.m.; Saturday, 9 a.m.–5 p.m.

### **WELLNESS CENTER WEST**

**Operated by: County Contracted – Mental Health Association**

**Address:** 3055 West Orange Ave., Suite 105,  
Anaheim, CA 92804

**Phone:** (657) 667-6455 **Fax:** (714) 620-7995

**Web Address:** [www.mhaoc.org](http://www.mhaoc.org)

**Language(s):** English, Spanish, Vietnamese, Farsi, Korean

**Hours of Operation:** Monday–Saturday, 9 a.m. – 5 p.m.;  
Thursday, 9 a.m. – 7 p.m.



## Adult & Older Adult Behavioral Health (AOABH) Adult Supported Employment (Employment WORKS)

### Program Description

The Adult Supported Employment program, known as Employment WORKS, offers individuals who are seriously and persistently mentally ill, the opportunity to participate in supported employment services. The program offers individualized job placement and supportive vocational services.

### Serving

Orange County Adults 18 and older who are receiving services from county-operated adult outpatient clinics; county-contracted adult outpatient clinics, recovery centers and select Prevention and Intervention programs; and county-contracted adult and transitional age youth full service partnerships.

### Operated by

County Contracted – Goodwill Industries of Orange County

### Address

**North County Program:** 2250 S. Yale St, Ste. A, Santa Ana, CA 92704

**South County Program:** 23871 Via Fabricante, Ste. 401, Mission Viejo, CA 92691

### Phone and Fax

**North County** Phone: (714) 638-1741 Fax: (714) 638-4497

**South County** Phone: (949) 900-0550 Fax: (949) 900-0555

### Web Address

[www.ocgoodwill.org](http://www.ocgoodwill.org)

### Language(s)

English, Spanish, Vietnamese, Thai, Farsi, Korean

### Hours of Operation

Monday – Friday, 8 a.m. – 5 p.m.



## Adult & Older Adult Behavioral Health (AOABH) Homeless Multi-Service Center Services

### Program Description

This program includes two components to serve homeless individuals with mental illness and/or co-occurring disorders, as follows:

- The Homeless Multi-Service Center is a drop-in center with services including evaluation and assessment, individual and group counseling, substance abuse prevention and education, case management, referral services, housing services, vocational services, and other therapeutic activities. The Center also provides a hot lunch, a light breakfast and snacks, access to shower facilities, laundry services, local telephone calls, clothing, bus vouchers, a place for individuals to receive their mail, and referrals to appropriate behavioral health services according to their needs. Daily transportation is provided between the County's mental health short-term housing programs and the Center.
- The Courtyard Outreach program, in collaboration with both HCA and community collaborative partners, provides field case management, referral, and linkage to behavioral health or necessary community services, to adult homeless persons who have a mental illness or co-occurring substance use disorders, and are residing in the Courtyard in the civic center of downtown Santa Ana. Field case management services include provision of basic living essentials such as hygiene kits and clothing if necessary, providing bus passes, and other essential and necessary items the individuals being served may require. Courtyard staff may also assist with transporting clients to necessary services, if required.

### Serving

Both programs serve adults age 18 and older who are homeless and have a mental illness and/or co-occurring substance use disorder. Referrals come from County-operated programs, County-contracted short-term housing providers, community outreach workers, community social service referrals, individual referrals and walk-ins.

### Operated by

County Contracted – Mental Health Association of Orange County



**Address**

**Multi-Service Center:** 2416 South Main St.,  
Santa Ana, CA 92707

**Courtyard:** 400 W. Santa Ana Blvd.,  
Santa Ana, CA 92701

**Phone and Fax**

(714) 668-1530

**Web Address**

[www.mhaoc.org](http://www.mhaoc.org)

**Language(s)**

English, Spanish, Farsi

**Hours of Operation**

**Multi-Service Center:** 365-days a year, 6 a.m. to 3 p.m.

**Courtyard:** 365 days a year. Weekdays: 11:30 a.m. – 8 p.m.;  
Weekends: 8 a.m. – 5 p.m.



## Adult & Older Adult Behavioral Health (AOABH) Peer Mentoring

### Program Description

The Adult and Older Adult Peer Mentoring program provides field-based supportive services and consists of three Tracks to serve clients, as described below.

### Track One

Clients are matched with a Peer Mentor to assist them in achieving short-term recovery goals identified by their treatment providers. This track also serves clients who have been recently psychiatrically hospitalized or who are at risk of psychiatric hospitalization; and older adults who have had multiple Emergency Room visits.

### Track Two

Clients pending discharge from the Crisis Stabilization Unit or identified Orange County hospital Emergency Departments who utilize a Peer Mentor to assist with linkage to their follow-up behavioral health appointments at County Outpatient Services.

### Track Three

Homeless adult/older adult clients, or those at risk of homelessness, who are Medi-Cal beneficiaries, have a pending housing placement, and are referred from HCA's Outreach and Engagement Team, and who utilize a Peer Mentor to help them develop independent living skills and maintain their housing placement for a minimum of 6 months.

### Serving

Adults ages 18-59 years, and older adults 60 years of age and older, who have been diagnosed with a serious mental illness (SMI) and who may have a co-occurring disorder.

### Operated by

County Contracted – College Community Services

### Address

501 N Brookhurst St., Ste. #306, Anaheim, CA. 92801

### Phone

(714) 948-7970

### Web Address

[www.ochealthinfo.com](http://www.ochealthinfo.com)

### Language(s)

English, Spanish, Farsi

### Hours of Operation

Monday – Friday, 8 a.m. – 5 p.m.



## Adult & Older Adult Behavioral Health (AOABH) Supplemental Security Income (SSI) Outreach

### Program Description

The Supplemental Security Income (SSI) Outreach services include providing support to mental health clients by assisting them with compiling supporting documentation and completing the necessary paperwork required to apply for SSI Benefits, as well as working with clients to appeal denials of benefits. The SSI outreach team receives referrals from county-operated and contracted clinic programs, the Homeless Multi-Service Center, and designated hospitals, and provides consultations each month with both referring staff and clients on issues involved with the SSI application process, and assists in clearing problem areas that may preclude approval of applications. The SSI Outreach Team will be responsible to be knowledgeable of the current and pending requirements for the SSI application and approval process at all times. In-service educational meetings for county and contracted program staff are routinely conducted to educate them regarding the eligibility requirements and the application process.

### Serving

Orange County Adults 18 and older who are receiving services from county-operated adult outpatient clinics; county-contracted adult outpatient clinics, recovery centers and select Prevention and Intervention programs, and county-contracted adult and transitional age youth full service partnerships.

### Operated by

County Contracted – Mental Health Association of Orange County

### Address

788 Town and Country Rd., Orange, CA 92868

### Phone

(714) 568-0082

### Fax

(714) 568-4552

### Web Address

[www.mhaoc.org](http://www.mhaoc.org)

### Language(s)

English, Spanish, Vietnamese

### Hours of Operation

Monday – Friday, 8 a.m. – 5 p.m.



## Adult & Older Adult Behavioral Health (AOABH) Representative Payee Services

### Program Description

A Representative Payee is an individual or organization appointed by the Social Security Administration (SSA) to receive Social Security Disability and/or Supplemental Security Income benefits for someone who is not fully capable of managing their own benefits/money, i.e. cannot be their own payee. A Representative Payee does not act as a legal guardian or conservator but is expected to assist the person with money management, along with providing protection from financial abuse and victimization. The Representative Payee will set up an individual trust account for each client he/she represents; establish a process for receiving all client income, and make routine and emergency payments on behalf of the clients they represent; provide a written procedure to each client at the time of the first meeting that clearly and simply explains the steps required to request and make payments or receive discretionary funds from their trust account; communicate on a regular basis with Plan Coordinators regarding the status of clients' linkage to Representative Payee services; communicate with clients, as needed, to inform them of the status of their accounts and provide them with their discretionary funds as scheduled; and provide all reports as required by SSA or other agencies as necessary.

### Serving

Orange County Adults 18 and older who are receiving services from county-operated adult outpatient clinics; county-contracted adult outpatient clinics, recovery centers and select Prevention and Intervention programs; and county-contracted adult and transitional age youth full service partnerships.

### Operated by

County Contracted – Mental Health Association of Orange County

### Address

822 Town and Country Rd., Orange, CA 92868

### Phone

(714) 352-8611

### Fax

(714) 640-5764

### Web Address

[www.mhaoc.org](http://www.mhaoc.org)

### Language(s)

English, Spanish

### Hours of Operation

Monday – Friday, 8 a.m. – 5 p.m.



## Office of the Public Guardian

### Program Description

The Public Guardian serves the community by providing investigative and fiduciary services to adults who are unable to provide their own basic personal needs due to a severe mental disorder or disabling physical condition. Public Guardian deputies and staff are committed to ensure that individualized personal treatment, supervision and financial oversight is provided so that conservatee achieve their highest level of self-determination, autonomy and independence. The Office of the Public Guardian is dedicated to the physical and financial safety of persons unable to do so on their own that are conserved when there are no viable alternatives to a public conservatorship. The Superior Court determines whether a conservatorship should be established, involving a court process that includes petitioning the court and notifying the proposed conservatee and his or her family of the proceedings. A conservatorship is only established as a last resort through a formal hearing. The Court can appoint the Public Guardian as a conservator of the person only, estate only (for probate) or both person and estate.

### Serving

Orange County Residents who meet **conservatorship** criteria (Lanterman-Petris Short Act) and are in grave disability due to a mental disorder and unable to provide for their food, clothing or shelter; or **probate** criteria who are unable to provide for their food, clothing or shelter due to a disabling medical condition.

### Operated by

County of Orange, Health Care Agency

### Address

1300 S. Grand Ave., Bldg. #C, Santa Ana, CA 92705

### Phone

(714) 567-7660

### Fax

(714) 567-7633

### Web Address

N/A

### Language(s)

English, Spanish, Vietnamese

### Hours of Operation

Monday – Friday, 8 a.m. – 5 p.m.





## The Recovery Education Institute

### Program Description

The Recovery Education Institute provides pre-vocational workshops, student advisement, and some college level courses offered through Saddleback Community College, Santiago Canyon College and the Centennial Education Center.

### Serving

Orange County residents age 18 and older who are receiving services from the Orange County Health Care Agency-Behavioral Health Services, and family members referred from current services.

### Operated by

County Contracted – Pacific Clinics

### Address

401 S. Tustin Ave., Orange, CA 92866

### Phone

(714) 244-4322

### Fax

(714) 244-4330

### Web Address

[www.pacificclinics.org](http://www.pacificclinics.org)

### Language(s)

English, Spanish, Vietnamese

### Hours of Operation

Monday – Thursday, 9 a.m. – 9 p.m.; Friday, 9 a.m. – 5 p.m.



## Authority and Quality Improvement Services (AQIS)

### Program Description

Authority and Quality Improvement Services (AQIS) is an administrative unit providing information, training, guidance and oversight related to quality and regulatory issues in the provision of services. Staff monitors service delivery capacity of the mental health plan, accessibility to services, beneficiary satisfaction, continuity and coordination of care with physical health care providers. This administrative unit also coordinates and monitors Medi-Cal consumer complaints, grievances and provider appeals.

### Serving

Behavioral Health Services and Medi-Cal consumers.

### Operated by

County of Orange, Health Care Agency

### Program Administration Address

405 W. 5th St., Ste. 410, Santa Ana, CA 92701

### Phone

(714) 834-5601

### Fax

(714) 834-6575

### Web Address

<http://www.ochealthinfo.com/bhs/about/aqis>

### Language(s)

English, Spanish, Vietnamese

### Hours of Operation

Monday – Friday, 8 a.m. – 4:30 p.m.



## Multicultural Development Program

### Program Description

The Multicultural Development Program aims to promote health equity by enhancing culturally responsive and inclusive behavioral health services for all ethnic and cultural groups through supportive services, training, education, research, and advocacy. The program provides services such as Language Service Coordination, SSI/SSDI Disability Benefits and Employment Consultation and Training, Culture and Mental Health Needs of the Deaf and Hard of Hearing Community Consultation and Training. We also conduct clinical trainings and education that include, but are not limited to topics such as Client Culture, Cultural Groups, Cultural Responsive Services, Stressed Families/Older Adult, People with Developmental Disability, People with HIV/AIDS, Refugees and Immigrants, Trauma-Exposed Individuals, Limited English Proficiency Culture, Lesbian, Gay, Bisexual, Transgender, Questioning, Intersex, and more. In addition, we provide consumer/peer supervision, culturally responsive and inclusive clinical consultation, culturally responsive, inclusive community research, advocacy— while identifying local and regional behavioral health needs of linguistically, and culturally diverse populations as they impact county systems of care. Moreover, we assist in the following areas: **1)** developing, coordinating, and facilitating the implementation of a culturally responsive and inclusive plan for Orange County; **2)** Developing, implementing, and ensuring the accuracy of verbal interpretation and written translation services and materials; **3)** planning and organizing cultural diversity events at an organizational and community level, and **4)** supporting strategies and efforts for reducing racial, ethnic, cultural and linguistic disparities.

### Serving

Orange County residents of all ages and groups.

### Operated by

County of Orange, Health Care Agency

### Address

600 W. Santa Ana Blvd., Santa Ana, CA 92701

### Phone

(714) 667-5600

### Fax

(714) 667-5612

### Web Address

<http://www.ochealthinfo.com/bhs/about/aqis/wet/culture>

### Language(s)

English, Spanish, Vietnamese, Farsi, ASL

### Hours of Operation

Monday – Friday, 8 a.m. – 5p.m.



## Behavioral Health Training Services (BHTS) Program

### Program Description

The Behavioral Health Training Services Program works to address occupational community-based shortages in the public mental health system. The BHTS component of the Mental Health Services Act (MHSA) is focused on training staff members with the necessary skill sets to provide services in accordance with MHSA principals, offering education and training that promotes wellness, recovery, and resilience to county staff and that of contracting community partners.

Skill building and education are also provided to prepare and encourage the employment of mental health consumers and family members within the behavioral health system. Effort is also focused on developing and maintaining a culturally responsive bicultural/bilingual workforce

### Serving

Behavioral Health Services Staff

### Operated by

County of Orange, Health Care Agency

### Address

600 W. Santa Ana Blvd., Ste. 510, Santa Ana, CA 92701

### Phone

(714) 667-5600

### Fax

(714) 667-5612

### Web Address

N/A

### Language(s)

English, Spanish, Vietnamese, Farsi, American Sign Language, Chinese Mandarin

### Hours of Operation

Monday – Friday, 8 a.m. – 5 p.m.



## Patients' Rights Advocacy Services

### Program Description

As part of a state-mandated patients' rights advocacy system, Patients' Rights Advocacy Services monitors and ensures the statutory and constitutional rights of persons receiving mental health services. Staff performs complaint investigations about mental health inpatient facilities, outpatient clinics and licensed residential care facilities. Staff also visits facilities to train mental health providers on patients' rights and ensures that consumers are informed about their rights. Patients are also assisted to advocate for themselves and to protect their right to self-determination. Services also include providing patients' rights resources to consumers and community members.

### Serving

Adults and children who are residents of Orange County and receiving services in Orange County mental health facilities.

### Operated by

County of Orange, Health Care Agency

### Address

405 W. 5th St., Ste. 477, Santa Ana, CA 92701

### Phone

(714) 834-5647

### Fax

(714) 834-5576

### Web Address

[www.ochealthinfo.com/bhs/about/pr](http://www.ochealthinfo.com/bhs/about/pr)

### Language(s)

English, Spanish, Vietnamese, TDD and telephonic translation services

### Hours of Operation

Monday – Friday, 7:30 a.m. – 4:30 p.m.



## Integrated Community Services (ICS) – Community Home

### Program Description

The Integrated Community Services (ICS)-Community Home pilot project provides outreach into the medical community to facilitate bi-directional services to fully integrate both physical and mental health care. This collaboration with community medical clinics and County mental health programs is a healthcare model that will prove to bridge the gaps in service for the underserved low-income community and increase better overall health outcomes for the patients involved. In the ICS Community Home project, a Mental Health Team (Psychiatrist, Behavioral Health Services Clinician and Mental Health Caseworker) will be brought into existing community health clinics: Southland Health Center and Korean Community Services. Bringing in each team to complement existing patient services allows full integration of patient care in each location.

### Serving

Orange County residents who are transitional age youth, adult and older adult participants who are receiving primary care services at Korean Community Services (KCS), Vietnamese Community of Orange County (VNCOC) or Central City Community Health Center (CCCHC) clinics, and are in need of mental health services. Eligibility includes Medi-Cal, Medi-Cal eligible or third party coverage, Primary Care and Mental Health Care needs.

### Operated by

County of Orange, Health Care Agency and County Contracted

### Address

9862 Chapman Ave., Garden Grove, CA 92861

### Phone

(714) 620-7070

### Fax

(714) 640-3475

### Web Address

[www.ochealthinfo.com/bhs/about/pi/mhsa/components/innovation](http://www.ochealthinfo.com/bhs/about/pi/mhsa/components/innovation)

### Language(s)

English, Spanish, Vietnamese, Korean

### Hours of Operation

- Asian Health Center: Monday – Friday, 9 a.m. – 6 p.m.
- Korean Community Services: Friday, 9 a.m. – 5:30 p.m.
- Central City Community Health Center: Monday – Friday, 9 a.m. – 6 p.m.; Saturday, 9 a.m. – 3 p.m.



## Adult & Older Adult Behavioral Health (AOABH) Transportation Program-California Yellow Cab

### Program Description

Non-Emergency Transportation services for Adults/Older Adults who have had difficulty getting to their behavioral health and/or medical appointments. Clients may schedule their rides to appointments up to 14 days in advance. The program is no cost to clients, and offers both curb-to-curb service, as well as door-to-door services for those individuals that maybe need assistance getting to the vehicle. Service animals and escorts (if applicable) are authorized to ride with clients at no additional cost. Handicap accessible vehicles available upon request.

### Serving

Adults/Older Adults who have had difficulty with transportation.

### Operated by

County of Orange, Health Care Agency and County Contracted

### Address

520 W. Dyer Rd., Santa Ana, CA 92707

### Phone

(714) 427-2555

### Fax

(714) 714-438-0405

### Web Address

[www.CaliforniaYellowCab.com](http://www.CaliforniaYellowCab.com)

### Language(s)

English, Spanish, Vietnamese, Korean, Farsi, and Arabic

### Hours of Operation

Monday –Friday, 6:30 a.m. – 8:00 p.m.



## Continuum of Care for Veterans and Military Families Child Guidance Center

### Program Description

The project will integrate military culture and services into Family Resource Centers (FRCs) located throughout Orange County. The purpose of this integration is to train non-veteran organizations on how to identify, screen, and serve military connected families, thereby increasing access to this underserved population.

### Serving

Military-connected families, which includes active service members, reservists, veterans (regardless of discharge status) and their children, spouses, partners and loved ones.

### Operated by

County contracted- Child Guidance Center

### Address

525 N. Cabrillo Drive, Suite 300, Santa Ana, CA 92701

### Phone

(714) 953-4455

### Fax

(714) 542-2793

### Web Address

### Language(s)

English, Spanish

### Hours of Operation

Monday –Friday, 8:00 a.m. – 5:00 p.m.





## Authority & Quality Improvement Pacific Educational Services (PES-eps)

### Program Description

Outpatient and Intensive Outpatient services include assessment, evaluation, collateral therapy, individual and group therapy, substance abuse treatment, medication support, rehabilitation, linkage and consultation, placement, plan development, crisis intervention and specialized residential services.

### Serving

Drug Medi-Cal beneficiaries entering treatment, must meet medical necessity and level of care determination based on the criteria of the American Society of Addiction Medicine (ASAM)

### Operated by

County contracted- Pacific Educational Services

### Address

600 W. Santa Ana Blvd, Suite 107 -110, Santa Ana, CA 92701

### Phone

(714) 667-7926

### Fax

(714) 667-7918

### Web Address

### Language(s)

English, Spanish

### Hours of Operation

Monday –Friday, 8:00 a.m. – 5:00 p.m.

