

OVERVIEW OF CURRENT SITUATION (12/28/20 1030)

Source: Johns Hopkins University & Medicine <https://coronavirus.jhu.edu/map.html>

Cases / Deaths
 Worldwide: 81,072,988 / 1,769,930
 Nationwide: 19,191,583 / 333,836
 California: 2,159,571 / 24,289
 Orange Co: 149,607 / 1,1846 Source: [Orange County COVID-19 Case Counts & Testing Figures](#)

ORANGE COUNTY PUBLIC HEALTH (as of 12/28/20 1000)

[Orange County COVID-19 Summary* click for full details](#)

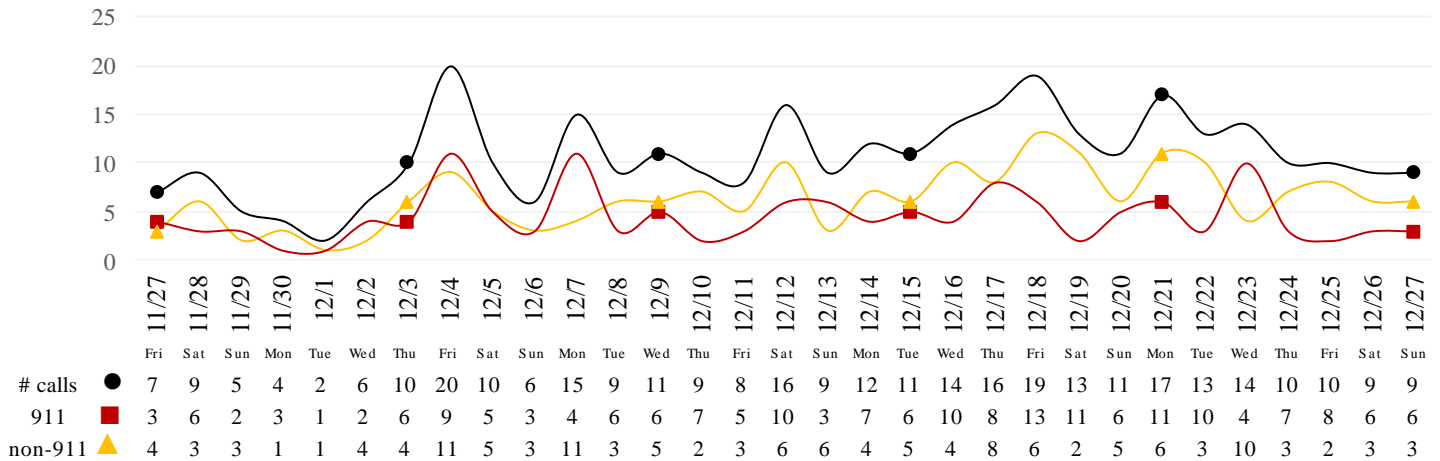
	Sat 12/26/20	Sun 12/27/20	Mon 12/28/20	Tue 12/29/20	Wed 12/30/20	Thu 12/31/20	Fri 1/1/21
Cases Reported to Date	144,263	147,463	149,607				
Deaths Reported to Date	1,845	1,846	1,846				
Tests Reported Today	14,569	11,647	20,307				
Cumulative Tests to Date	1,964,297	1,975,944	1,996,251				

*Data posted is always preliminary & subject to change. More information may become available as individual case investigations are completed. **LOCAL DATA MAY BE DIFFERENT FROM THE STATE WEBSITE DATA**

SKILLED NURSING/ASSISTED LIVING/RESIDENTIAL CARE FACILITY – TRENDS

*Data Source: Orange County Medical Emergency Data System (OC-MEDS)

Calls to SNFs/Congregate Living with Primary Impressions: Fever/Cough, Influenza-like Illnesses
 (Transports to ERCs Only - Last 30 Days)



*Data Source: California Department of Public Health (CDPH)

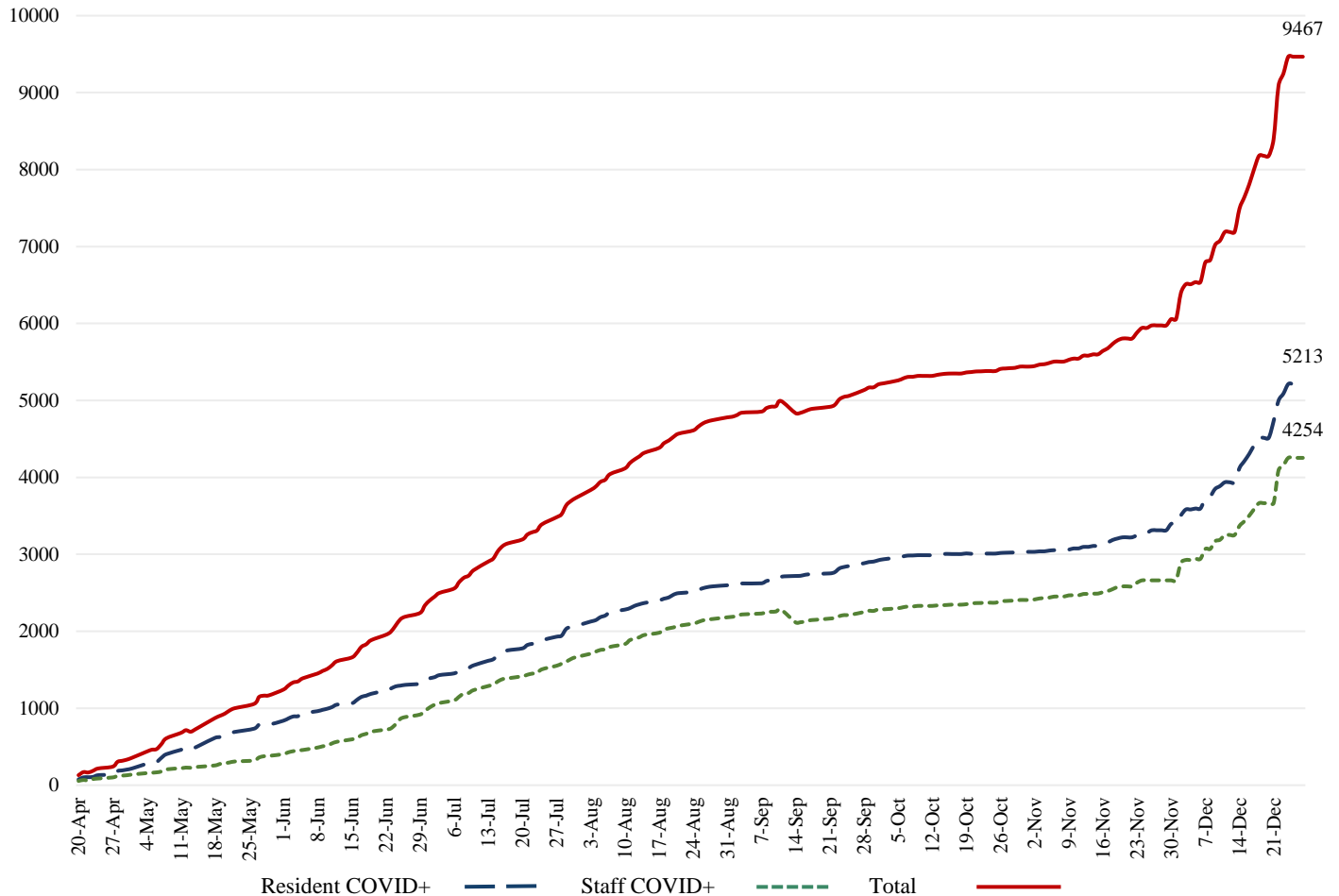
**Skilled Nursing/Assisted Living/Residential Care Facility PPE / Ventilator Supplies Days on Hand
 (66/73 SNFs reported)**

Reporting Date: 12/28/2020	0 - 3 days	4 - 7 days	8-14 days	15+ days
N95 Masks	0	3	12	51
Surgical Masks	0	3	9	54
Eye Protection	0	3	10	53
Gowns	0	3	10	53
Gloves	1	4	9	52
Alcohol-Based Hand Sanitizer	0	4	10	52

*Data Source: Orange County Health Care Agency – Public Health

****NOTE**:** Decrease in the COVID + in staff seen on graph is due to data being cleaned and removing duplicates of those that work in multiple OC facilities or are contract staff and care for residents at multiple facilities.

COVID+ in Congregate Healthcare*



*Data Source: Orange County Health Care Agency – Public Health

Current Facility Outbreaks (as of 12/28/20 1000)

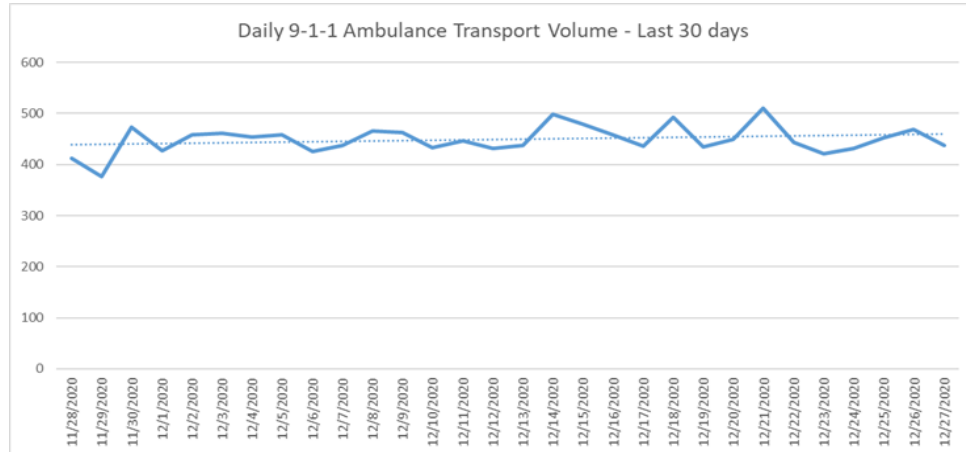
An "Outbreak" is two (2) or more confirmed cases of COVID-19 in facility occurring within 14 days.

Facility Type by Licensing Category, Count		Facility Name Alphabetical
Skilled Nursing Facility	43	Advanced Rehab Center Of Tustin, Alamitos West Health & Rehabilitation, Alta Gardens Care Center, Anaheim Crest Nursing Center, Anaheim Healthcare Center, Llc, Anaheim Terrace Care Center, Buena Park Nursing Center, Buena Vista Care Center, Capistrano Beach Care Center, Chapman Care Center, Crystal Cove Care Center, Extended Care Hospital Of Westminster, Freedom Village Healthcare Center, Garden Grove Convalescent Hospital, Garden Park Care Center, Gordon Lane Care Center, Harbor Villa Care Center, Huntington Valley Healthcare Center, La Habra Convalescent Hospital, Laguna Hills Health And Rehabilitation Center, Leisure Court Nursing Center, Mainplace Post Acute, Manorcare Health Services (Fountain Valley), Mesa Verde Post Acute Care Center, Mission Palms Healthcare Center, New Orange Hills, Newport Subacute Healthcare Center, Park Regency Care Center, Park Vista At Morningside (Snf), Regents Point - Windcrest, Sea Cliff Healthcare Center, Serento Rosa (Snf), South Coast Post Acute, St. Elizabeth Healthcare Center, Stanley Healthcare Center, Sun Mar Nursing Center, The Hills Post Acute, The Pavilion At Sunny Hills, Town And Country Manor, Victoria Healthcare And Rehabilitation Center, Villa Valencia (Snf), Windsor Gardens Care Center Of Fullerton, Windsor Gardens Convalescent Center Of Anaheim
Elderly Assisted Living	52	A Pericles Elderly Care Home, A Touch Of Serenity Residential Care, Anaheim Crown Plaza, Arbor Palms Of Anaheim, Ardent Care, Atria Golden Creek, Atria Newport Plaza, Belmont Village Aliso Viejo, Brookdale Garden Grove, Brookdale Irvine, Bubbe & Zayde's Place Ii, Citrus Hills Assisted Living, Crescendo Senior Living, Crestavilla Senior Living, Freedom Village, Fullerton Rosewood Assisted Living, Fullerton Villa, Harvest Retirement, Heritage Pointe, Huntington Terrace, Karlton Residential Care Center, Katella Senior Living Community, Kirkwood Orange, Mainplace Senior Living, Meridian At Laguna Hills, New Horizon Lodge, Inc., Oakmont Of Huntington Beach, Oakmont Of Orange, Orange County Care Home, Orange Point Home Care, Pacific Shores Of Lake Forest (Moresby), Pacifica Royale Assisted Living Community, Pacifica Senior Living South Coast, Palm Retirement Center, Park Regency Retirement Center, Regents Point (Alf), Rochelle Manor, Rosart Home Rcf, Rossmoor Home Assisted Living, Rowntree Gardens, Sea Cliff Assisted Living, Seaside Terrace Iii, Seaside Terrace Retirement Community, Serento Rosa (Alf), Silverado Brea Llc, Silverado Senior Living - San Juan Capistrano, Sunrise Assisted Living Of Fullerton, Sunrise At Yorba Linda, Sunrise Of Mission Viejo, Sunrise Of Seal Beach, Valley View Gardens, Vivante On The Coast

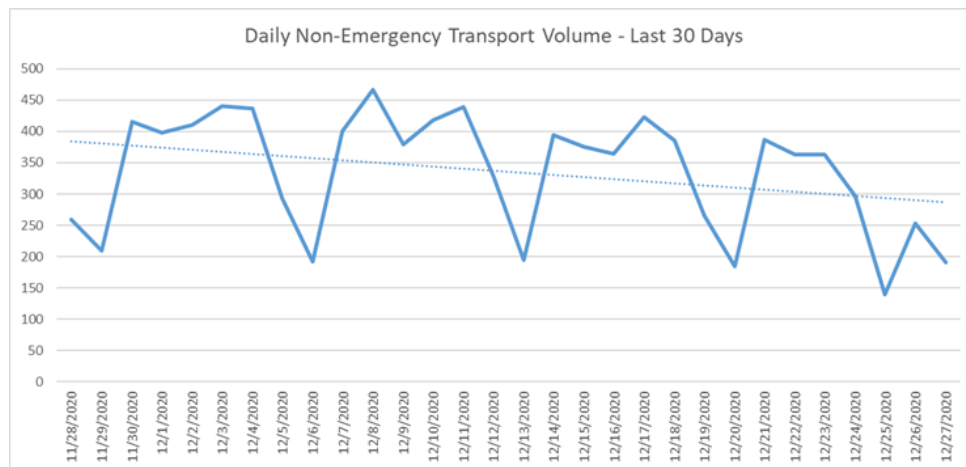
EMERGENCY MEDICAL SERVICES STATUS

*Data Source: Orange County Medical Emergency Data System (OC-MEDS)

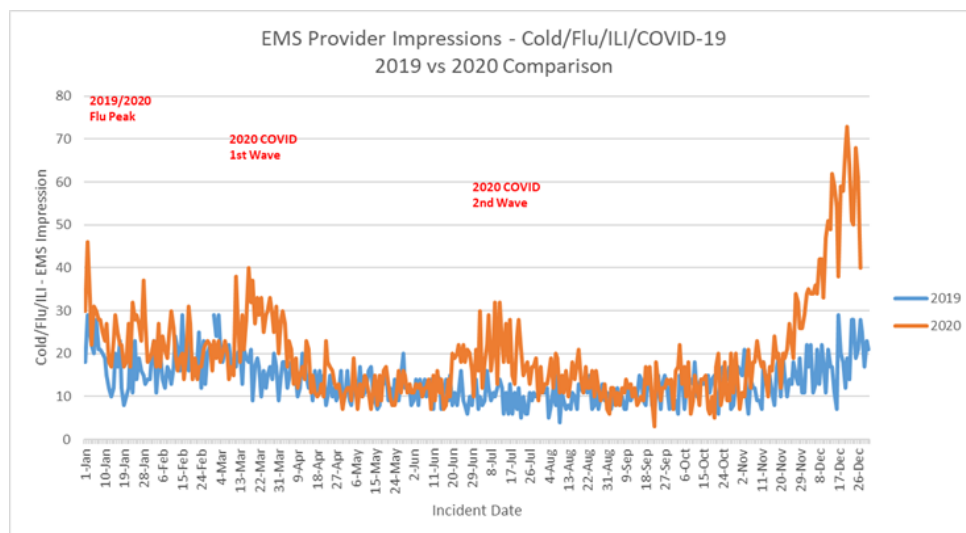
9-1-1 ambulance transport volume has stabilized over the last few days but are higher over the last 30 days. Volume is approaching normal (pre-COVID) levels but **most of the increase has occurred in the last 3-4 weeks** (Updated 12/28/20).



Non-emergency ambulance transports continue to declined. Transport volume is **averaging about 30-35% below normal** (pre-COVID) levels overall (Updated 12/28/20).



Primary Impressions of Cold/Flu/ILI by 9-1-1 EMS providers has fluctuated up and down for the last few days, but **remain about 10-15% of all 9-1-1 transports** (Updated 12/28/20).



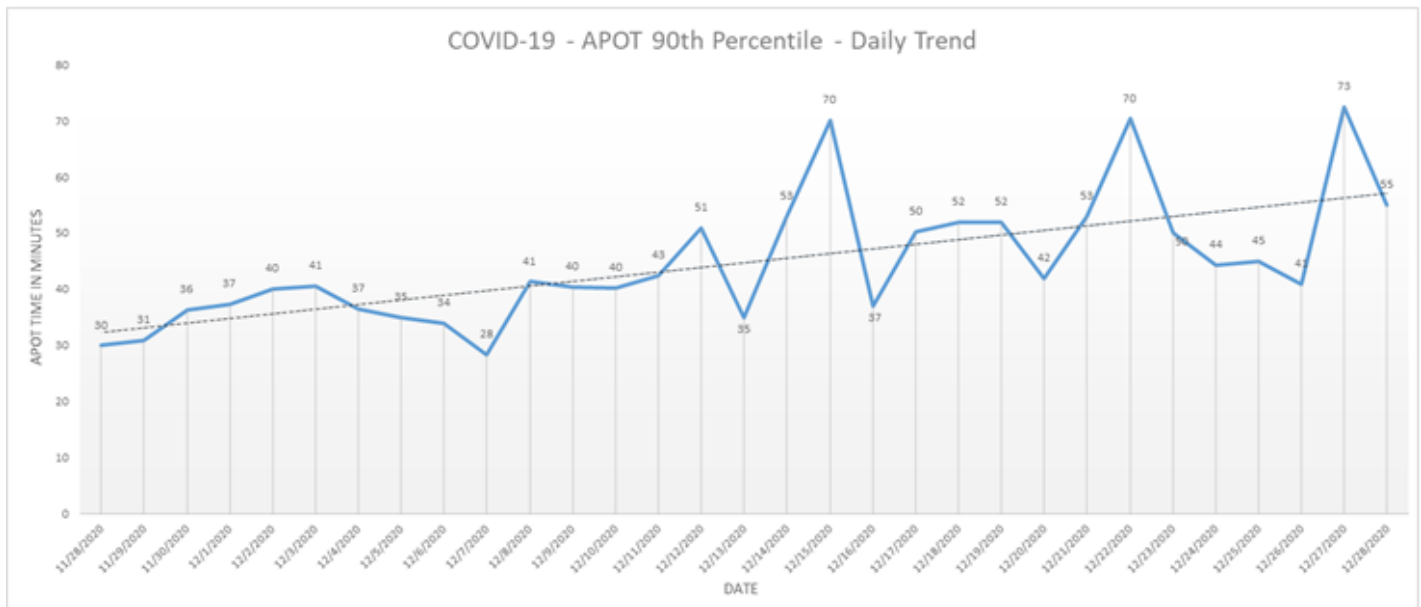
- Ambulance Patient Offload Time (APOT) is defined as the time the ambulance arrives at the receiving destination (wheels stop) to the time that the ambulance crew physically transfers the patient to the ED gurney. Last 24 hours: **Current Average APOT is: 22m44s / Current 90th Percentile APOT is: 55m14s**

The chart below displays a daily trend over the last 30 days.

- Seventeen (17) ERCs had APOT times greater than thirty (30) minutes.
- Eight (8) ERCs had APOT times greater than sixty (60) minutes.

Note: a handful of ERCs were close to the 30 minute threshold, but were not over it.

*Data Source: Orange County Medical Emergency Data System (OC-MEDS)

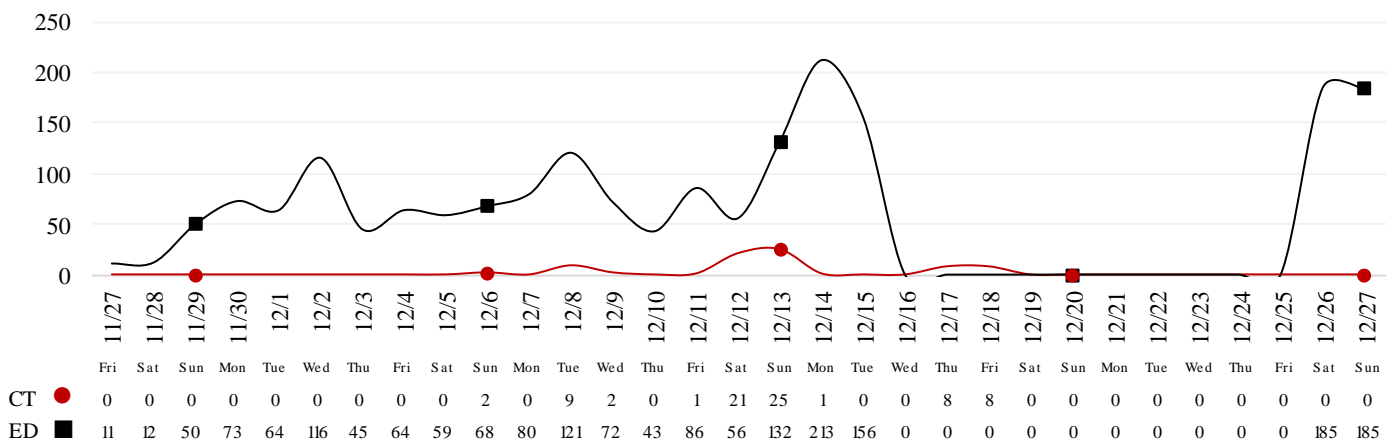


- Emergency Department (ED) Diversion & Computerized Tomography (CT) (ED closed to all ambulance transport due to no ED capacity or no CT available) for the last 30 days 11/27/20 – 12/27/20 below.
- NOTE: Hospital Diversion was suspended for 72 hours on 12/15/20 @ 1900. The suspension was lifted on 12/18/20.**

*Data Source: ReddiNet

Hours of Diversion per 24-Hour Period

Thru 12-27-2020, Last 30 Days | 25 Hospitals (Rounded to nearest hour)



12/28/20

26): Anaheim Regional, Anaheim Global, Chapman Global, CHOC, CHOC at Mission, Foothill, Fountain Valley, Garden Grove, Hoag-Irvine, Hoag-Newport Beach, Huntington Beach, Kaiser-Anaheim, Kaiser-Irvine, La Palma, Los Alamitos, Mission-Laguna Beach, Mission-Mission Viejo, Orange Coast Memorial, Orange County Global, Placentia Linda, Saddleback Memorial, Saint Jude, South Coast Global, St. Josephs, UCI, West Anaheim

***Data Source: California Department of Public Health (CDPH) – Snowflake server**

Current Snowflake Data Dictionary may be found at:

https://www.calhospital.org/sites/main/files/file-attachments/data_dictionary_cha_covid_tracker_4-17-20.pdf

ALL HOSPITALS (33)															
DATE	Census ALL	Occupancy %	COVID+ Hospitalized	COVID+ ICU	ICU Occupied Adult	ICU Available Adult	% ICU Beds Adult Available	ICU Occupied Peds	ICU Available Peds	% ICU Beds Peds Available	ICU CDPH OC Occupied **	ICU CDPH OC Available ***	% ICU CDPH OC Available ****	% ICU Beds System Available *****	% Ventilators Available
12/10	4197	76%	1122	265	532	65	11%	36	32	47%	665	97	15%	25%	54%
12/11	4244	77%	1150	273	524	68	11%	32	36	53%	660	104	16%	27%	53%
12/12	4152	75%	1236	284	548	70	11%	40	28	41%	686	98	14%	26%	54%
12/13	4081	75%	1287	288	547	58	10%	40	28	41%	673	86	13%	24%	52%
12/14	4090	74%	1371	296	557	68	11%	35	33	49%	693	101	15%	27%	50%
12/15	4242	76%	1486	319	565	63	10%	36	32	47%	696	95	14%	25%	50%
12/16	4282	77%	1519	343	580	49	8%	38	30	44%	697	79	11%	23%	47%
12/17	4243	76%	1557	358	569	59	9%	37	31	46%	696	90	13%	25%	51%
12/18	4273	77%	1601	361	565	60	10%	25	43	63%	693	103	15%	25%	50%
12/19	4203	76%	1682	375	570	79	12%	31	37	54%	717	116	16%	27%	51%
12/20	4123	75%	1709	380	566	66	10%	31	37	54%	700	103	15%	25%	48%
12/21	4193	76%	1806	390	622	56	8%	28	40	59%	746	96	13%	24%	45%
12/22	4209	76%	1854	394	600	59	9%	25	43	63%	727	102	14%	25%	44%
12/23	4219	76%	1893	405	589	57	9%	24	44	65%	714	101	14%	25%	44%
12/24	4202	76%	1955	417	607	50	8%	24	44	65%	725	94	13%	24%	44%
12/25	4098	75%	1957	432	611	45	7%	20	48	71%	724	93	13%	24%	45%
12/26	4026	75%	1990	443	591	54	8%	23	45	66%	713	99	14%	25%	45%
12/27	4181	77%	2031	453	609	46	7%	22	46	68%	723	92	13%	24%	42%

****ICU CDPH OC Occupied – CDPH combines occupied ICU adult beds and occupied ICU pediatric beds as a reporting metric on their COVID-19 Hospital dashboard.**

*****ICU CDPH OC Available – CDPH subtracts the sum of occupied ICU adult beds and occupied ICU pediatric beds, from the sum of ICU total adult beds and ICU total pediatric beds to determine ICU available beds on their COVID-19 Hospital dashboard.**

******% ICU CDPH OC Available – The sum of occupied ICU adult beds and occupied ICU pediatric beds, divided by the sum of ICU total adult beds and ICU total pediatric beds, as a percentage.**

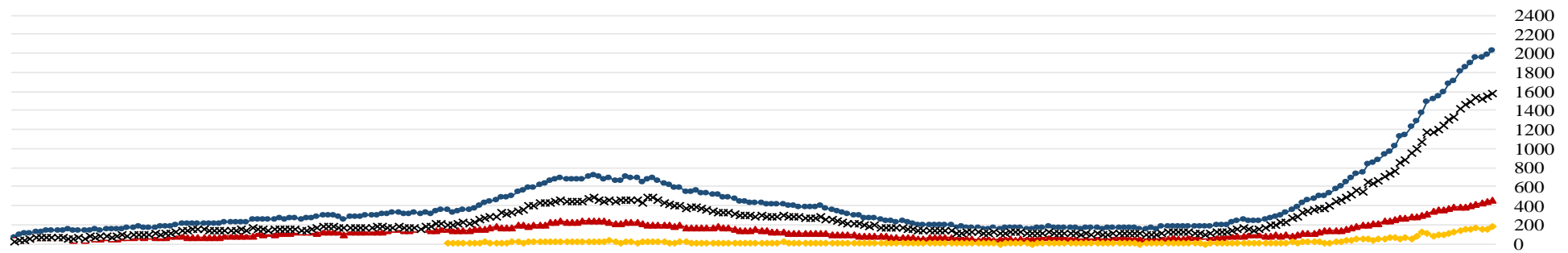
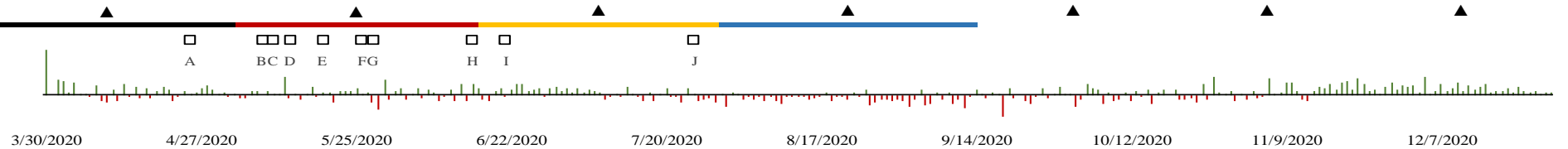
*******% ICU Beds System Available – All ICU beds reported as available in Orange County, which includes Adult, PICU, and NICU, and any other ICU bed types.**

12/28/20

COVID 19 ORANGE COUNTY HOSPITAL SYSTEM DATA (CA SNOWFLAKE SERVER)

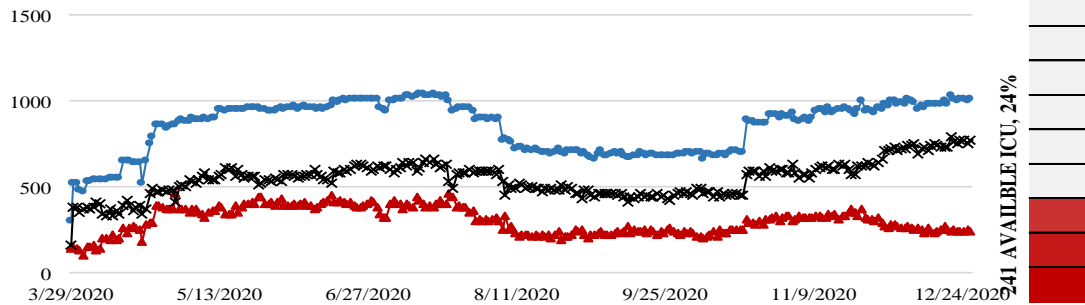
NON-ICU - 12/27/20 X ICU - 12/27/20 ▲ ED OVERFLOW - 12/27/20 ◆ SYSTEM - 12/27/20 ● 1 DAY +/- (12/26/20) 3 DAY +/- (12/25/20) 7 DAY +/- (12/21/20)

1578 31 2.0% 453 10 2.3% 185 24 14.9% 2031 41 2.1% 2031 41 2.1% 1957 74 3.8% 1806 225 12.5%

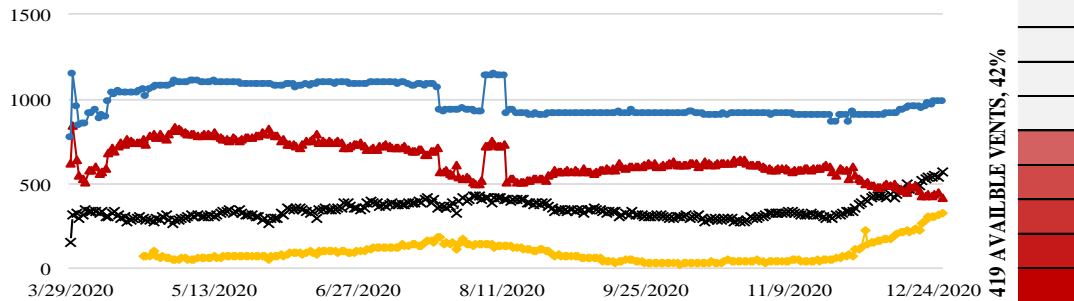


A. Face Covers Mandatory, B. Cinco de Mayo, C. OC Beaches Open, D. Mom's Day, E. OC Parks Parking Open, F. OC Stage 2 Approved, G. Memorial Day, H. Re-open entertainment, etc., I. CA Gov. Mask Mandate, J. Changes to data collection, Federal

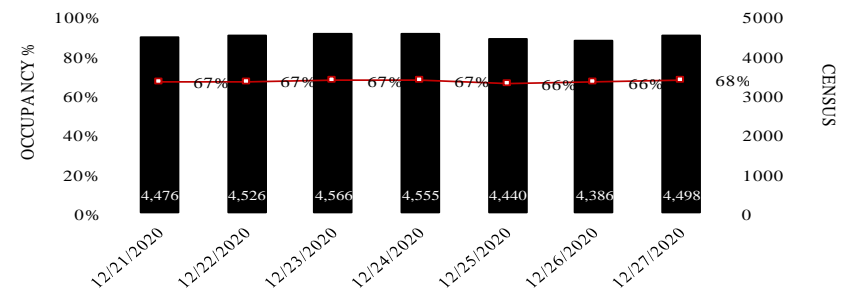
ICU CENSUS - (12/27/20) | ● SYSTEM-1014 | ▲ AVAILABLE-241 (24%) | X OCCUPIED-773



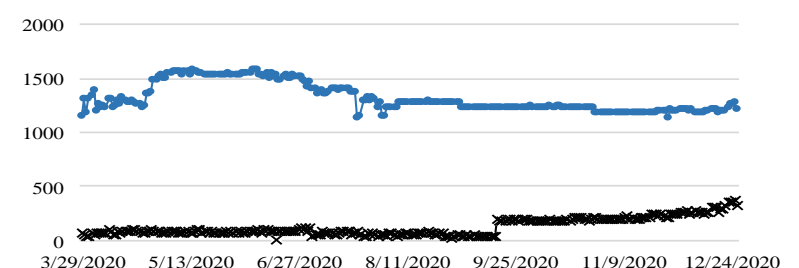
VENTILATORS - (12/27/20) | ● SYSTEM-987 | ▲ AVAILABLE-419 (42%) | X OCCUPIED-568 | ◆ COVID 328



7-DAY HISTORY BED OCCUPANCY - (12/27/20) | IN-PATIENT BEDS- 4498 (68%)

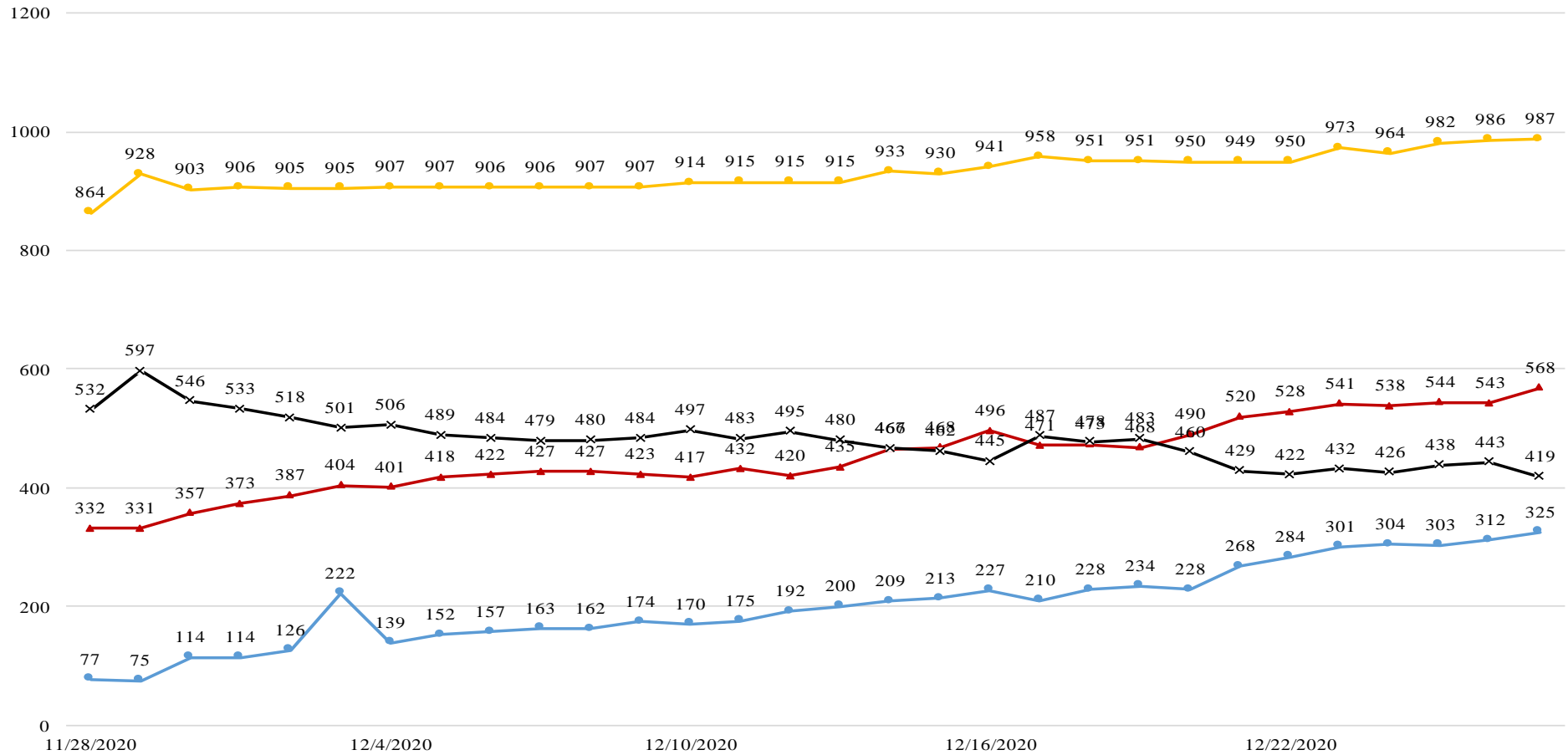


SURGE CENSUS - (12/27/20) | X OCCUPIED-317 | ● SYSTEM-1214



12/28/20

COVID 19 ORANGE COUNTY HOSPITAL SYSTEM DATA (CA SNOWFLAKE SERVER)
VENTILATORS IN USE (11/28/20 - 12/27/20) | 33 ACUTE CARE FACILITIES REPORTING



DATE	11/28	11/29	11/30	12/1	12/2	12/3	12/4	12/5	12/6	12/7	12/8	12/9	12/10	12/11	12/12	12/13	12/14	12/15	12/16	12/17	12/18	12/19	12/20	12/21	12/22	12/23	12/24	12/25	12/26	12/27
COVID+ ●	77	75	114	114	126	222	139	152	157	163	162	174	170	175	192	200	209	213	227	210	228	234	228	268	284	301	304	303	312	325
SYSTEM OCC ▲	332	331	357	373	387	404	401	418	422	427	427	423	417	432	420	435	466	468	496	471	473	468	490	520	528	541	538	544	543	568
SYSTEM AVL ✕	532	597	546	533	518	501	506	489	484	479	480	484	497	483	495	480	467	462	445	487	478	483	460	429	422	432	426	438	443	419
SYSTEM TTL ◆	864	928	903	906	905	905	907	907	906	906	907	907	914	915	915	915	933	930	941	958	951	951	950	949	950	973	964	982	986	987

COVID+ = CONFIRMED AND SUSPECTED PATIENTS ON A VENTILATOR

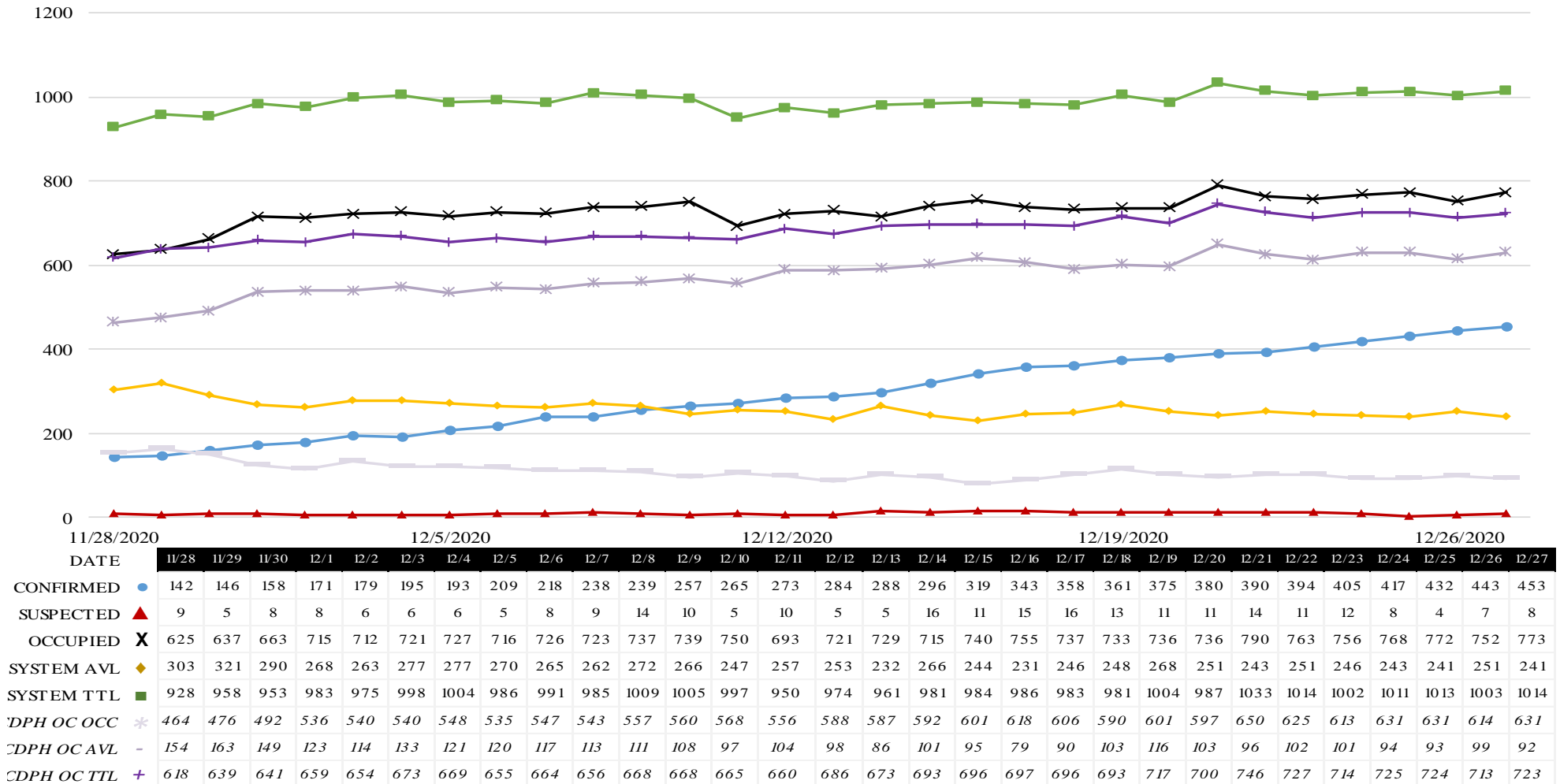
*OCC = VENTILATORS IN USE, INCLUDING COVID+ PATIENTS AND OTHER VENT PATIENTS

**AVL = AVAILABLE VENTILATORS IN SYSTEM

***TTL = TOTAL VENTILATORS IN SYSTEM

12/28/20

COVID 19 ORANGE COUNTY HOSPITAL SYSTEM DATA (CA SNOWFLAKE SERVER)
ICU BEDS (11/28/20 - 12/27/20) | 33 ACUTE CARE FACILITIES REPORTING



*AVL = AVAILABLE NON SURGE ICU BEDS. PRIOR TO 7/22 DEFINITION DID NOT EXCLUDE NONSURGE.

**TTL = TOTAL NON SURGE ICU BEDS. PRIOR TO 7/22 DEFINITION DID NOT EXCLUDE NONSURGE.

*** AS OF 10/20/2020 SPIKE IN SYSTEM TTL, OCCUPIED AND AVAILABLE DUE TO CHANGE IN CHOC ORANGE REPORTED VALUES.

**** CDPH OC OCC = Adult ICU Occupied + Pediatric ICU Occupied

***** CDPH OC AVL = (Adult ICU Total Beds + Pediatric ICU Total Beds) - (Adult ICU Occupied + Pediatric ICU Occupied)

***** CDPH OC TTL = Adult ICU Total + Pediatric ICU Total

*Data Source: California Department of Public Health (CDPH) – Snowflake server

**Current Snowflake Data Dictionary may be found at:

https://www.calhospital.org/sites/main/files/file-attachments/data_dictionary_cha_covid_tracker_4-17-20.pdf

Acute Care Hospital PPE / Ventilator Supplies Days on Hand – (27/33 ACHs reported)

Reporting Date: 12/27/20*	30 days +	15-30 days	7-14 days	4-6 days	0-3 days	Not Reported
Ventilator Supplies**	6	5	14	2	0	6
N95 Masks**	20	5	1	1	0	6
Surgical Masks**	16	7	1	0	0	9
Face Shields**	18	2	4	2	1	6
Gloves**	12	3	5	2	5	6
Gowns**	11	9	6	1	0	6

*Data Source: ReddiNet

Reported Service Category Status (20/25 ACHs w/EDs reported)

Reporting Date: 12/28/20	Count	% of Total
Command Center Activated	14	56%
Surge Plan Activated	15	60%
Canceled Procedures/Services	13	52%
Supply Issues	7	28%
CDPH Flex	10	40%
Increased Morgue Capacity	15	60%

Hospital Criteria for shifting to Crisis Care Strategies

LEGEND

STATUS

CRITERIA	Normal Operations	Modified Operations Under Control	Modified Operations Assistance Needed
Rate of change in Hospitalized COVID-19 patients (doubling time over last 7 days)	Never to 4 weeks to double	4 weeks to 2 weeks to double	Less than 2 weeks to double
Absolute COVID-19 Census in the hospital	Less than 500	500-750	>750
Hospital census as a percentage of capacity	<80%	80% to 90%	>90%
Supply of PPE available in the hospitals	>4 weeks	2 to 4 weeks	< 2 weeks

Hospital Criteria for shifting to Crisis Care Strategies

12/27/20

STATUS

CRITERIA	Normal Operations	Modified Operations Under Control	Modified Operations Assistance Needed
Rate of change in Hospitalized COVID-19 patients (doubling time over last 7 days)	6.3		
Absolute COVID-19 Census in the hospital			2,031
Hospital census as a percentage of capacity	77%		
Supply of PPE available in the hospitals		2-4 weeks	

AGENCY OPERATIONS CENTER / LOGISTICS SECTION

- The AOC is activated M-F 0900-1600 at Level I; Warehouse Ops are M-F - 0900-1600.
- SCARCE Resources: Gloves, Wipes, Syringes, Needles

Total Activity – Updated 12/23/20 at 1530

INQUIRIES	RR RECEIVED	RR FILLED
16659 +50	9,493 +46	7,638 +55
Total Denied Requests: 779 / Total Redacted Requests: 809		

Logistics Daily Units Distributed 12-23-20

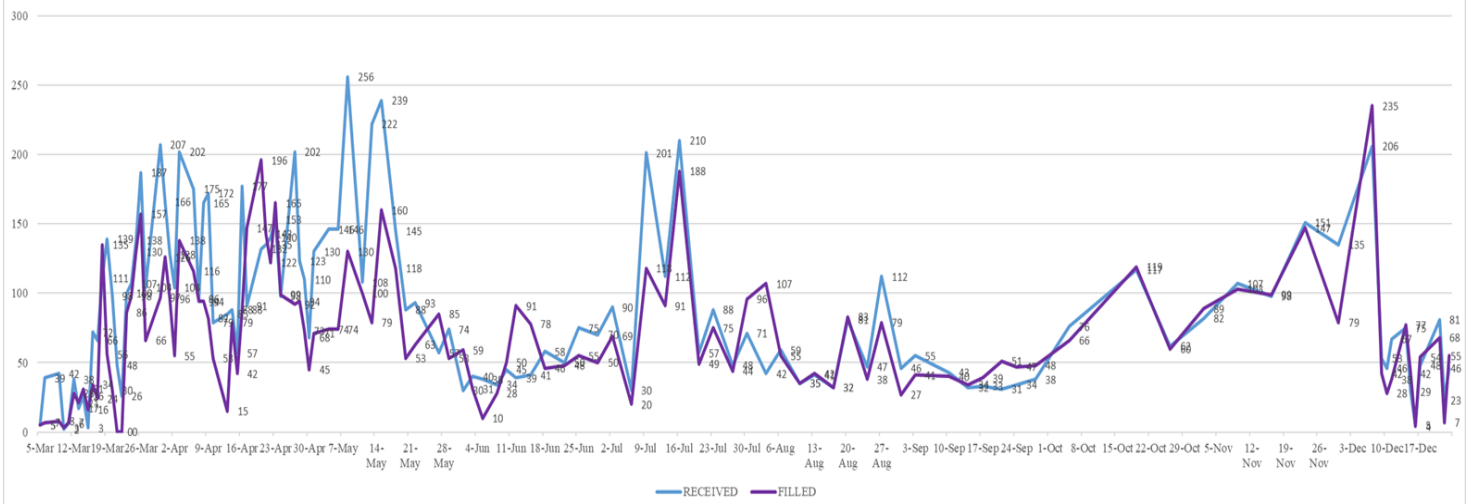
N95 Mask	31,500
Surgical Mask	3,200
Gown	11,510
Gloves	49,500
Face Shields/Eye Protection	5,450
Hand Sanitizer	500
Other	19,318
Total Units	120,978

Inventory Report February 18 to December 24, 2020

Medical Supply/Equipment Total Units Distributed	
N95 Mask	4,960,365
Surgical Mask	1,950,755
Gowns	1,962,251
PPE-Suit	17,965
Gloves	4,551,750
Eye Protection	358,979
Hand Sanitizer	310,988
Other Items	1,831,421
Total Units	15,944,474

Resource Requests

U:\1 REAL EVENTS\COVID-19\3\ MHOAC\MHOAC Daily Med Health System Overall Status



ALTERNATE CARE SITE (ACS)

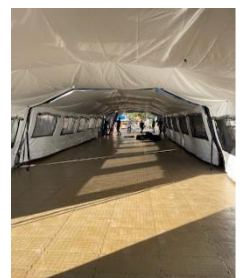
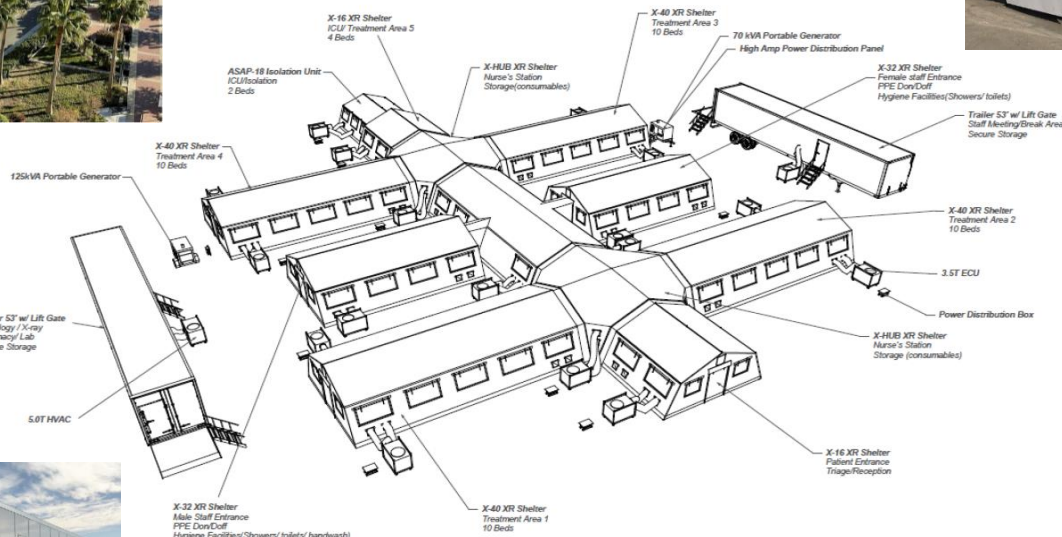
- Fairview Alternate Care Site (FACS) opened for admissions on **TUESDAY, 12/15/20 @ 1800**
- FACS Admissions Guidelines (updated 12.16.20) may be found on the OCEMS website at:
<https://www.healthdisasteroc.org/civicax/filebank/blobdload.aspx?BlobID=118724>

Fairview (COVID-19 +)		
Patient Census (as of 12/28/2020 09:00)	CURRENT	TOTAL
Orange County	7	21
LA County	11	23
Riverside	0	2
San Diego County	0	0
Ventura County	0	0
Total patients CENSUS / TOTAL ACCEPTED	18	46
Patients Discharged		TOTAL
DISCHARGED		28

MOBILE FIELD HOSPITALS

- MFHs are capable of expanding current hospital capacity by adding additional patient beds.
- They are large heavy duty canvas tents with hard flooring and temperature controlled units.
- They can be configured in a myriad of footprints and sizes (i.e. 25-200 bed).
- CDPH is primed and ready to provide hospitals a waiver to allow emergency use of this MFH facility.
- OCEMS is actively deploying multiple MFHs to OC hospitals prepared to receive & operate
 - OCEMS has a total of 8 trailers to support at minimum, 200 patient beds.
 - Hospitals who have self-identified in receiving a MFH include:

- **UCI (50 bed) – confirmed**
- **Fountain Valley (25 bed) – confirmed**
- **Los Alamitos (25 bed) – confirmed**



MOBILE FIELD HOSPITALS

