

OVERVIEW OF CURRENT SITUATION (12/30/20 1030)

Source: Johns Hopkins University & Medicine <https://coronavirus.jhu.edu/map.html>

Cases / Deaths
 Worldwide: 82,330,554 / 1,797,732
 Nationwide: 19,575,927 / 340,004
 California: 2,235,543 / 24,997
 Orange Co: 152,059 / 1,847 Source: [Orange County COVID-19 Case Counts & Testing Figures](#)

ORANGE COUNTY PUBLIC HEALTH (as of 12/30/20 1000)

Orange County COVID-19 Summary* click for full details

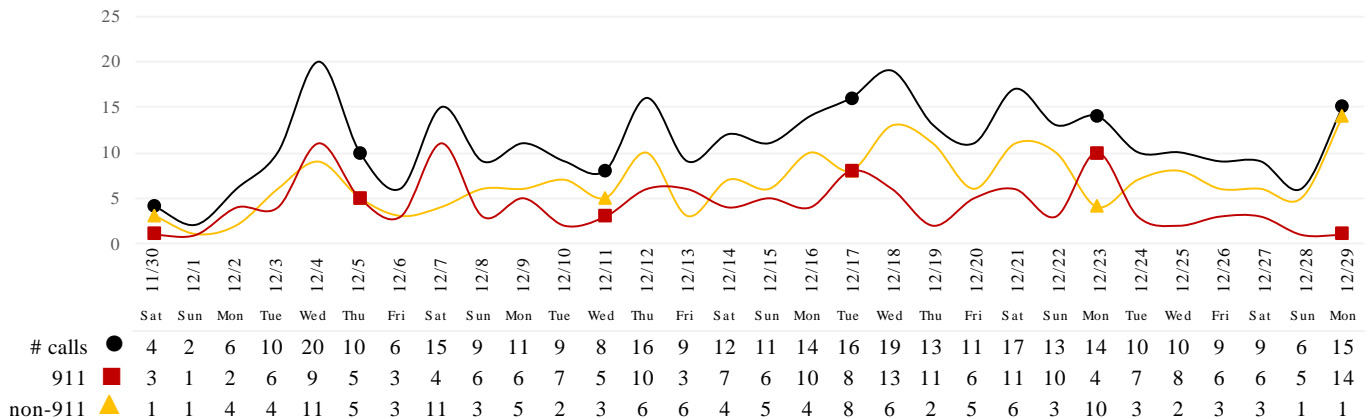
	Sat 12/26/20	Sun 12/27/20	Mon 12/28/20	Tue 12/29/20	Wed 12/30/20	Thu 12/31/20	Fri 1/1/21
Cases Reported to Date	144,263	147,463	149,607	152,059	156,573		
Deaths Reported to Date	1,845	1,846	1,846	1,847	1,874		
Tests Reported Today	14,569	11,647	20,307	14,038	12,340		
Cumulative Tests to Date	1,964,297	1,975,944	1,996,251	2,010,289	2,022,629		

*Data posted is always preliminary & subject to change. More information may become available as individual case investigations are completed. **LOCAL DATA MAY BE DIFFERENT FROM THE STATE WEBSITE DATA**

SKILLED NURSING/ASSISTED LIVING/RESIDENTIAL CARE FACILITY – TRENDS

*Data Source: Orange County Medical Emergency Data System (OC-MEDS)

Calls to SNFs/Congregate Living with Primary Impressions: Fever/Cough, Influenza-like Illnesses
 (Transports to ERCs Only - Last 30 Days)



*Data Source: California Department of Public Health (CDPH)

**Skilled Nursing/Assisted Living/Residential Care Facility PPE / Ventilator Supplies Days on Hand
 (68/73 SNFs reported)**

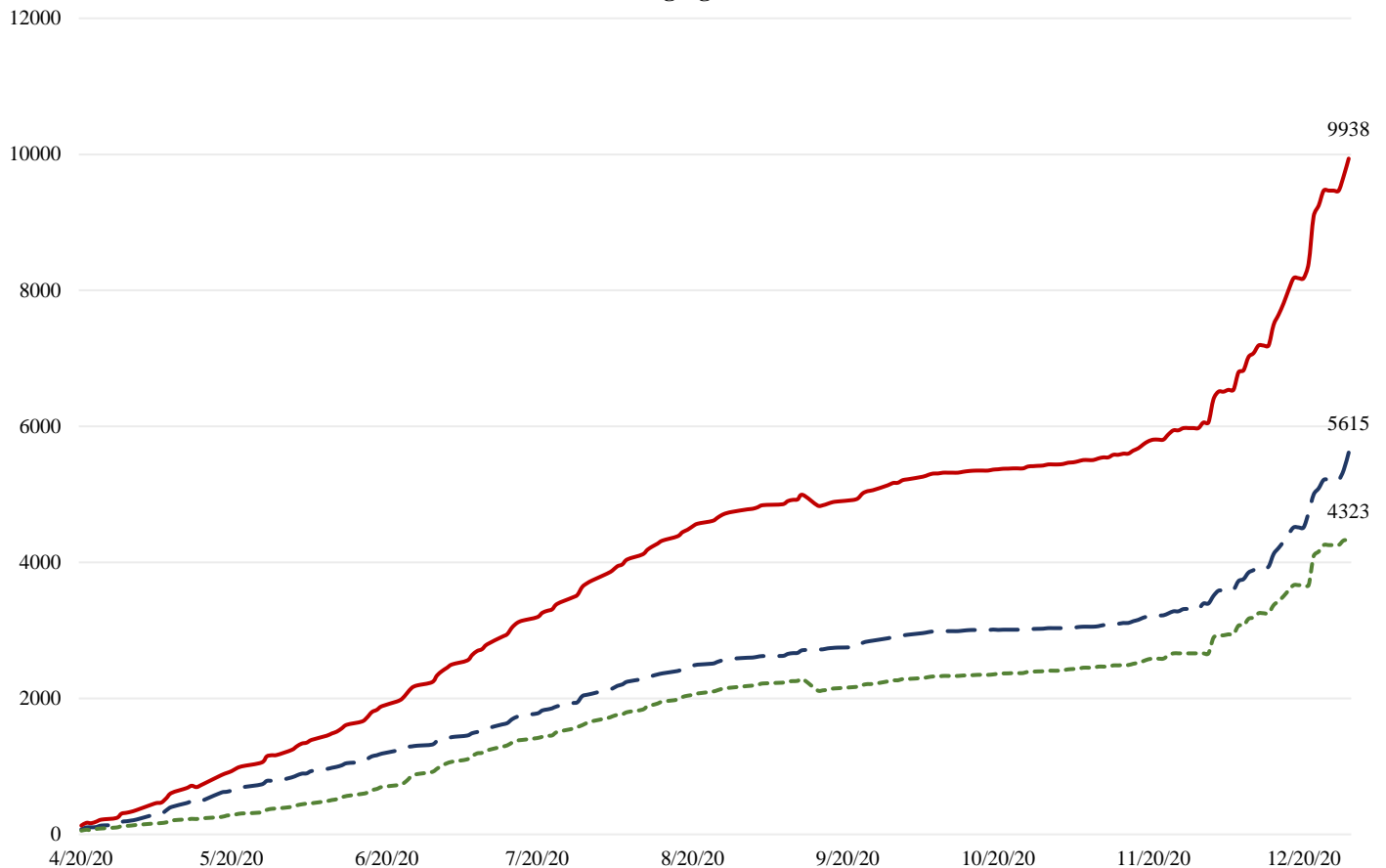
Reporting Date: 12/30/2020	0 - 3 days	4 - 7 days	8-14 days	15+ days
N95 Masks	0	5	12	51
Surgical Masks	0	5	11	52
Eye Protection	0	5	11	52
Gowns	0	5	11	52
Gloves	0	7	12	49
Alcohol-Based Hand Sanitizer	0	6	11	51

*Data Source: Orange County Health Care Agency – Public Health

NOTE: Decrease in the COVID + in staff seen on graph is due to data being cleaned and removing duplicates of those that work in multiple OC facilities or are contract staff and care for residents at multiple facilities.

Resident COVID+ ——— Staff COVID+ - - - - - Total ———

COVID+ in Congregate Healthcare*



*Data Source: Orange County Health Care Agency – Public Health

Current Facility Outbreaks (as of 12/30/20 1000)

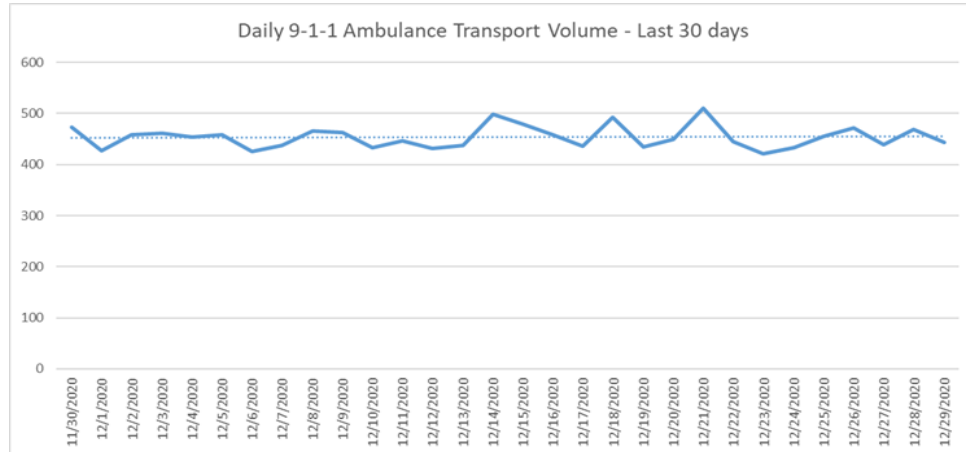
An “Outbreak” is two (2) or more confirmed cases of COVID-19 in facility occurring within 14 days.

Facility Type by Licensing Category, Count		Facility Name Alphabetical
Skilled Nursing Facility	41	Alamitos West Health & Rehabilitation, Alta Gardens Care Center, Anaheim Crest Nursing Center, Anaheim Healthcare Center, Llc, Anaheim Terrace Care Center, Buena Park Nursing Center, Buena Vista Care Center, Capistrano Beach Care Center, Chapman Care Center, Country Villa Plaza Convalescent Center, Crystal Cove Care Center, Extended Care Hospital Of Westminster, Freedom Village Healthcare Center, French Park Care Center, Garden Grove Convalescent Hospital, Garden Park Care Center, Gordon Lane Care Center, Huntington Valley Healthcare Center, La Habra Convalescent Hospital, La Palma Nursing Center, Laguna Hills Health And Rehabilitation Center, Leisure Court Nursing Center, Mainplace Post Acute, Mesa Verde Post Acute Care Center, Mission Palms Healthcare Center, New Orange Hills, Newport Subacute Healthcare Center, Park Regency Care Center, Park Vista At Morningside (Snf), Regents Point - Windcrest, Sea Cliff Healthcare Center, Serento Rosa (Snf), South Coast Post Acute, St. Elizabeth Healthcare Center, Stanley Healthcare Center, Sun Mar Nursing Center, The Hills Post Acute, The Pavilion At Sunny Hills, Town And Country Manor, Victoria Healthcare And Rehabilitation Center, Windsor Gardens Convalescent Center Of Anaheim
Elderly Assisted Living	62	A Touch Of Serenity Residential Care, Aegis Assisted Living Of Laguna Niguel, Anaheim Crown Plaza, Arbor Palms Of Anaheim, Ardent Care, Atria Golden Creek, Atria Newport Plaza, Brookdale Garden Grove, Bubbe & Zayde's Place Ii, Carmel Village Retirement Community, Citrus Hills Assisted Living, Crescendo Senior Living, Crestavilla Senior Living, Freedom Village, Fullerton Rosewood Assisted Living, Fullerton Villa, Golden Angel Of La Habra Ii, Golden Years Residential Care, Harvest Retirement, Heritage Pointe, Irvine Cottage #8, Karlton Residential Care Center, Katella Senior Living Community, Kirkwood Orange, La Vida At Mission Viejo, Las Palmas, Leisure Tower Guest Home, Mainplace Senior Living, Meridian At Laguna Hills, New Horizon Lodge, Inc., Oakmont Of Huntington Beach, Oakmont Of Orange, Orange County Care Home, Orange Point Home Care, Pacific Shores Of Lake Forest (Moresby), Pacifica Royale Assisted Living Community, Pacifica Senior Living South Coast, Park Regency Retirement Center, Regents Point (Alf), Rochelle Manor, Rosart Home Rcf, Rossmoor Home Assisted Living, Rowntree Gardens, Sea Cliff Assisted Living, Seaside Terrace Retirement Community, Serento Rosa (Alf), Silverado Brea Llc, Silverado Senior Living - San Juan Capistrano, Steadfast (Chopin), Steadfast (Western), Sunrise Assisted Living At La Palma, Sunrise Assisted Living Of Fullerton, Sunrise At Yorba Linda, Sunrise Haven, Sunrise Of Huntington Beach, Sunrise Of Mission Viejo, Sunrise Of Seal Beach, Sunset View Senior Care At Laurel View, The Groves Of Tustin, Valley View Gardens, Vivante On The Coast, Woodbridge Terrace Of Irvine

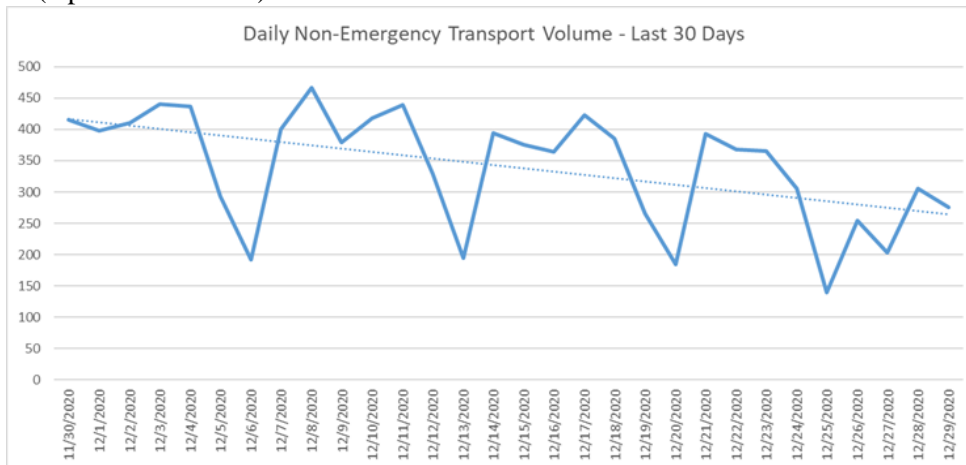
EMERGENCY MEDICAL SERVICES STATUS

*Data Source: Orange County Medical Emergency Data System (OC-MEDS)

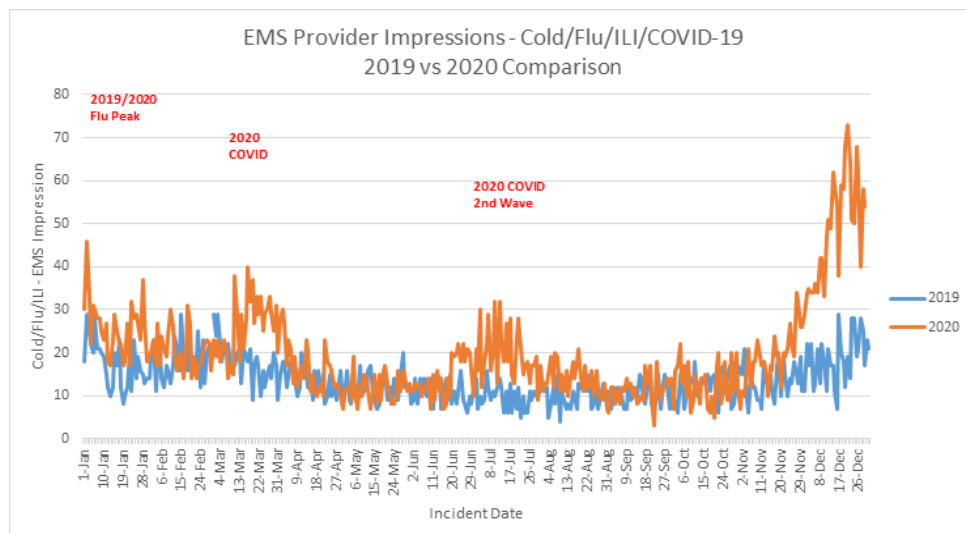
9-1-1 ambulance transport volume has stabilized over the last several days but are higher over the last 30 days. Volume is about 5-10% below normal (pre-COVID) levels (Updated 12/30/20).



Non-emergency ambulance transports continue to decline. Transport volume is averaging about 30-35% below normal (pre-COVID) levels overall (Updated 12/30/20).



Primary Impressions of Cold/Flu/ILI by 9-1-1 EMS providers has fluctuated up and down for the last few days, but remain about 10-15% of all 9-1-1 transports (Updated 12/30/20).



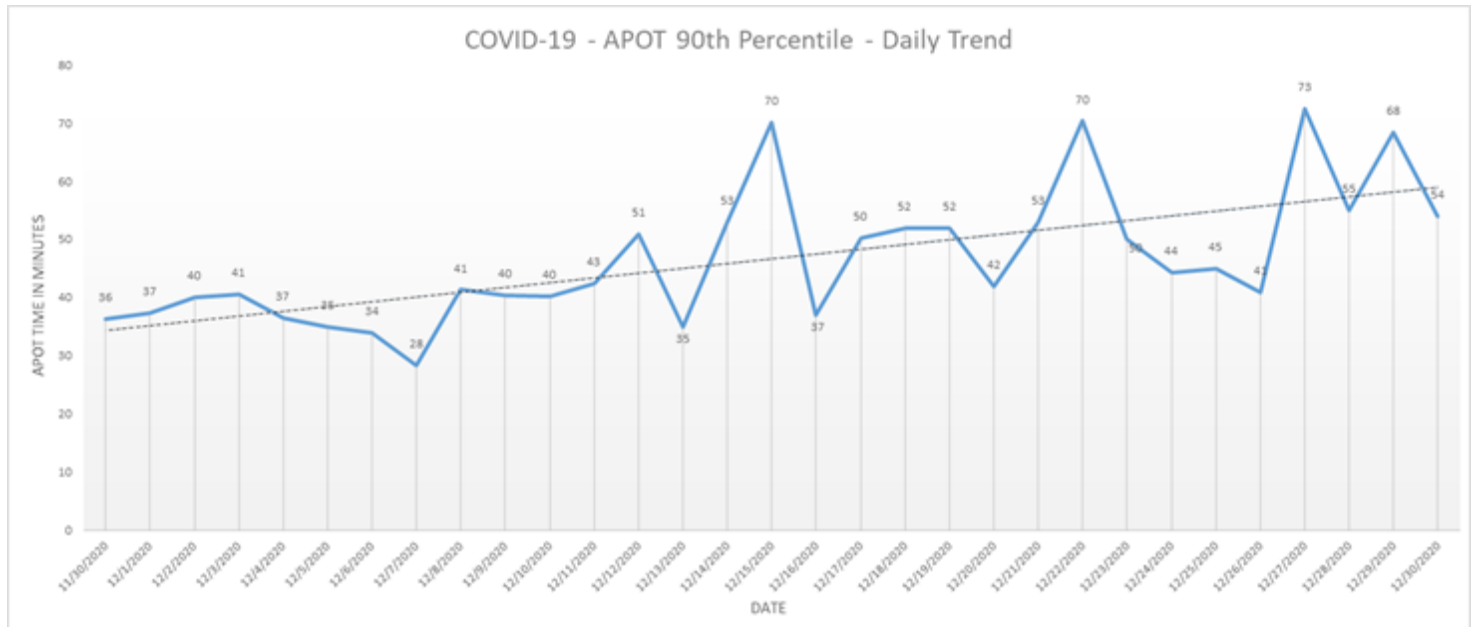
- Ambulance Patient Offload Time (APOT) is defined as the time the ambulance arrives at the receiving destination (wheels stop) to the time that the ambulance crew physically transfers the patient to the ED gurney. Last 24 hours: **Current Average APOT is: 23m40s / Current 90th Percentile APOT is: 54m02s**

The chart below displays a daily trend over the last 30 days.

- Fourteen (14) ERCs had APOT times greater than thirty (30) minutes.
- Eight (8) ERCs had APOT times greater than sixty (60) minutes.

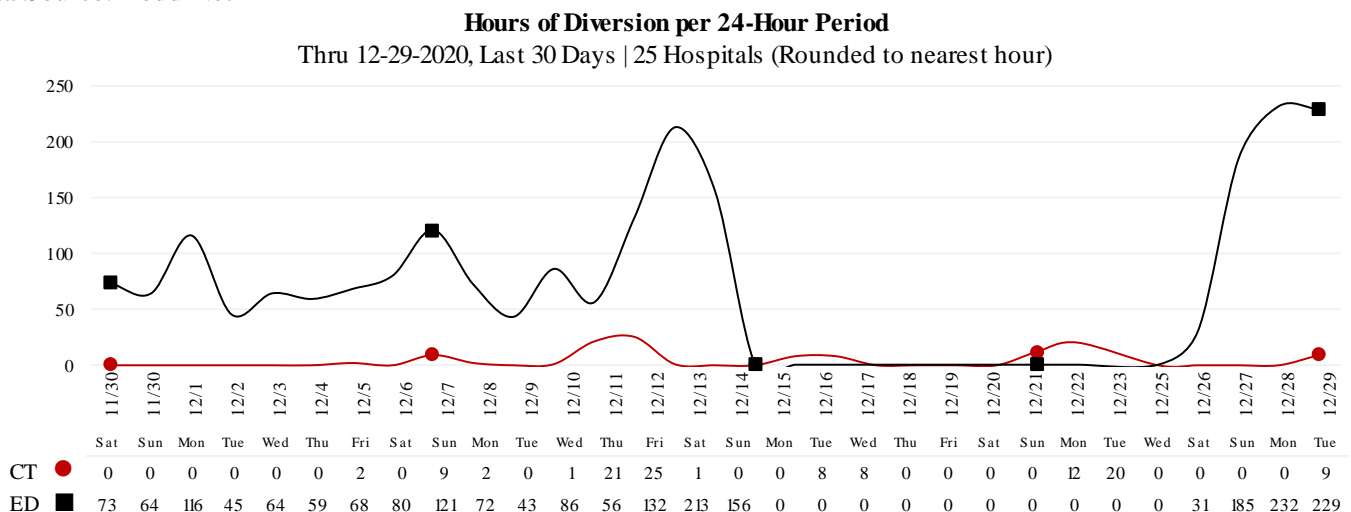
Note: a handful of ERCs were close to the 30 minute threshold, but were not over it.

*Data Source: Orange County Medical Emergency Data System (OC-MEDS)



- Emergency Department (ED) Diversion & Computerized Tomography (CT) (ED closed to all ambulance transport due to no ED capacity or no CT available) for the last 30 days 11/29/20 – 12/29/20 below.
- NOTE: Hospital Diversion was suspended for 72 hours on 12/15/20 @ 1900. The suspension was lifted on 12/26/20 @ 1900.**

*Data Source: ReddiNet



12/30/20

26): Anaheim Regional, Anaheim Global, Chapman Global, CHOC, CHOC at Mission, Foothill, Fountain Valley, Garden Grove, Hoag-Irvine, Hoag-Newport Beach, Huntington Beach, Kaiser-Anaheim, Kaiser-Irvine, La Palma, Los Alamitos, Mission-Laguna Beach, Mission-Mission Viejo, Orange Coast Memorial, Orange County Global, Placentia Linda, Saddleback Memorial, Saint Jude, South Coast Global, St. Josephs, UCI, West Anaheim

*Data Source: California Department of Public Health (CDPH) – Snowflake server

Current Snowflake Data Dictionary may be found at:

https://www.calhospital.org/sites/main/files/file-attachments/data_dictionary_cha_covid_tracker_4-17-20.pdf

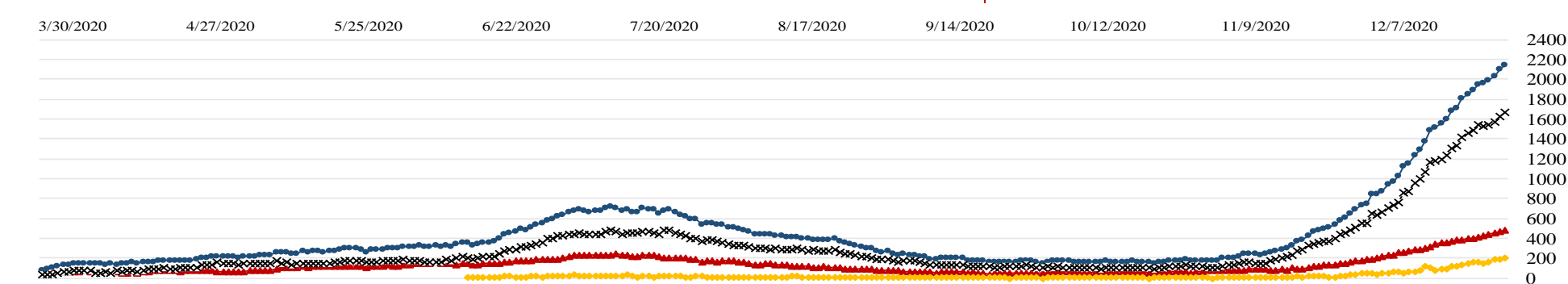
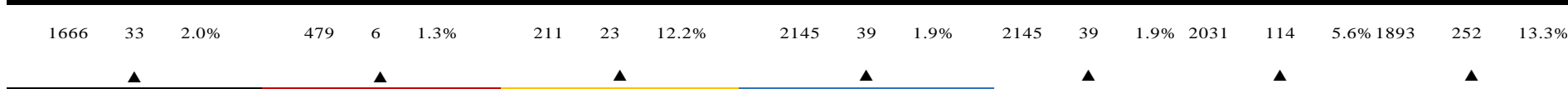
ALL HOSPITALS (33)															
DATE	Census ALL	Occupancy % *****	COVID+ Hospitalized	COVID+ ICU	ICU Occupied Adult	ICU Available Adult	% ICU Beds Adult Available	ICU Occupied Peds	ICU Available Peds	% ICU Beds Peds Available	ICU CDPH OC Occupied **	ICU CDPH OC Available ***	% ICU CDPH OC Available ****	% ICU Beds System Available *****	% Ventilators Available
12/12	4152	75%	1236	284	548	70	11%	40	28	41%	686	98	14%	26%	54%
12/13	4081	75%	1287	288	547	58	10%	40	28	41%	673	86	13%	24%	52%
12/14	4090	74%	1371	296	557	68	11%	35	33	49%	693	101	15%	27%	50%
12/15	4242	76%	1486	319	565	63	10%	36	32	47%	696	95	14%	25%	50%
12/16	4282	77%	1519	343	580	49	8%	38	30	44%	697	79	11%	23%	47%
12/17	4243	76%	1557	358	569	59	9%	37	31	46%	696	90	13%	25%	51%
12/18	4273	77%	1601	361	565	60	10%	25	43	63%	693	103	15%	25%	50%
12/19	4203	76%	1682	375	570	79	12%	31	37	54%	717	116	16%	27%	51%
12/20	4123	75%	1709	380	566	66	10%	31	37	54%	700	103	15%	25%	48%
12/21	4193	76%	1806	390	622	56	8%	28	40	59%	746	96	13%	24%	45%
12/22	4209	76%	1854	394	600	59	9%	25	43	63%	727	102	14%	25%	44%
12/23	4219	76%	1893	405	589	57	9%	24	44	65%	714	101	14%	25%	44%
12/24	4202	76%	1955	417	607	50	8%	24	44	65%	725	94	13%	24%	44%
12/25	4098	75%	1957	432	611	45	7%	20	48	71%	724	93	13%	24%	45%
12/26	4026	75%	1990	443	591	54	8%	23	45	66%	713	99	14%	25%	45%
12/27	4181	77%	2031	453	609	46	7%	22	46	68%	723	92	13%	24%	42%
12/28	4167	76%	2106	473	578	64	10%	25	43	63%	710	107	15%	26%	42%
12/29	4296	77%	2145	479	609	46	7%	44	24	35%	723	70	10%	22%	40%

ICU CDPH OC Occupied – CDPH combines occupied ICU adult beds and occupied ICU pediatric beds as a reporting metric on their COVID-19 Hospital dashboard. *ICU CDPH OC Available – CDPH subtracts the sum of occupied ICU adult beds and occupied ICU pediatric beds, from the sum of ICU total adult beds and ICU total pediatric beds to determine ICU available beds on their COVID-19 Hospital dashboard. ****% ICU CDPH OC Available – The sum of occupied ICU adult beds and occupied ICU pediatric beds, divided by the sum of ICU total adult beds and ICU total pediatric beds, as a percentage. ***** ICU Beds System Available – All ICU beds reported as available in Orange County, which includes Adult, PICU, and NICU, and any other ICU bed types. ***** Occupancy % - Census all, divided by system beds total, excluding surge capacity.

12/30/20

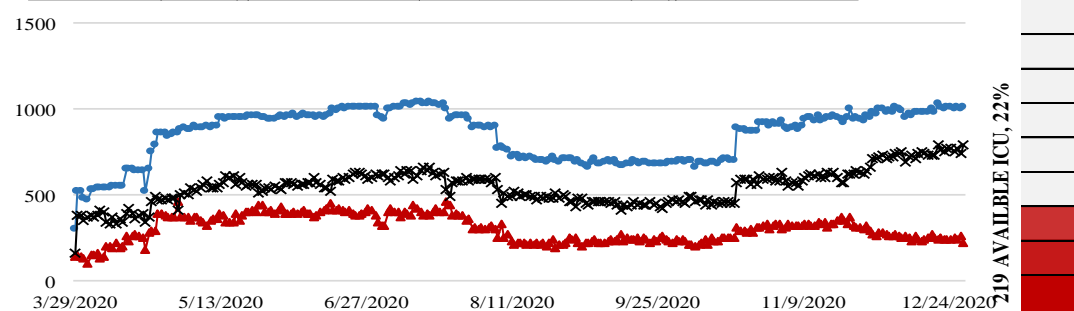
COVID 19 ORANGE COUNTY HOSPITAL SYSTEM DATA (CA SNOWFLAKE SERVER)

NON-ICU - 12/29/20 X ICU - 12/29/20 ▲ ED OVERFLOW - 12/29/20 ◆ SYSTEM - 12/29/20 ● 1 DAY +/- (12/28/20) 3 DAY +/- (12/27/20) 7 DAY +/- (12/23/20)

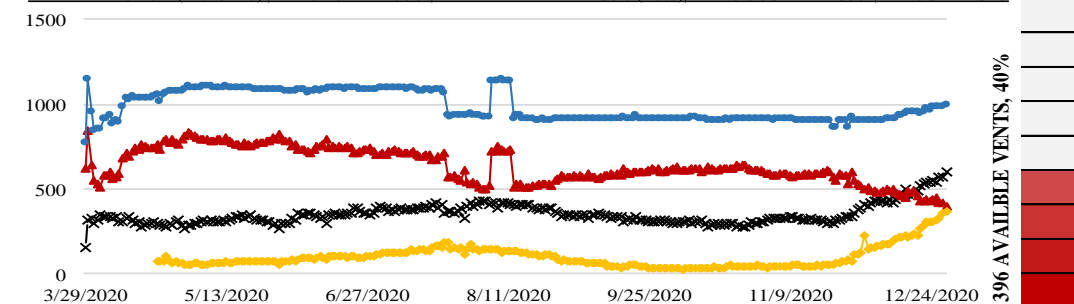


A.Face Covers Mandatory, B. Cinco de Mayo, C. OC Beaches Open, D. Mom's Day, E. OC Parks Parking Open, F. OC Stage 2 Approved, G. Memorial Day, H. Re-open entertainment, etc., I. CA Gov. Mask Mandate, J. Changes to data collection, Federal

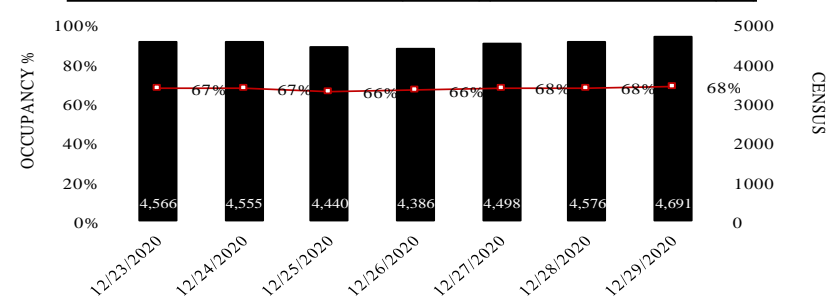
ICU CENSUS - (12/29/20) | ● SYSTEM- 1012 | ▲ AVAILABLE- 219 (22%) | X OCCUPIED- 793



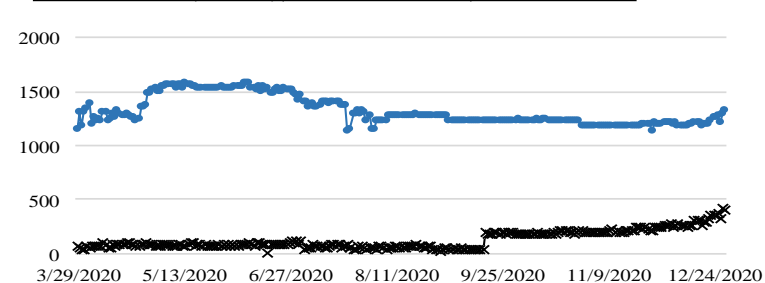
VENTILATORS - (12/29/20) | ● SYSTEM- 995 | ▲ AVAILABLE- 396 (40%) | X OCCUPIED- 599 | ◆ COVID 373



7-DAY HISTORY BED OCCUPANCY - (12/29/20) | IN-PATIENT BEDS- 4691 (68%)

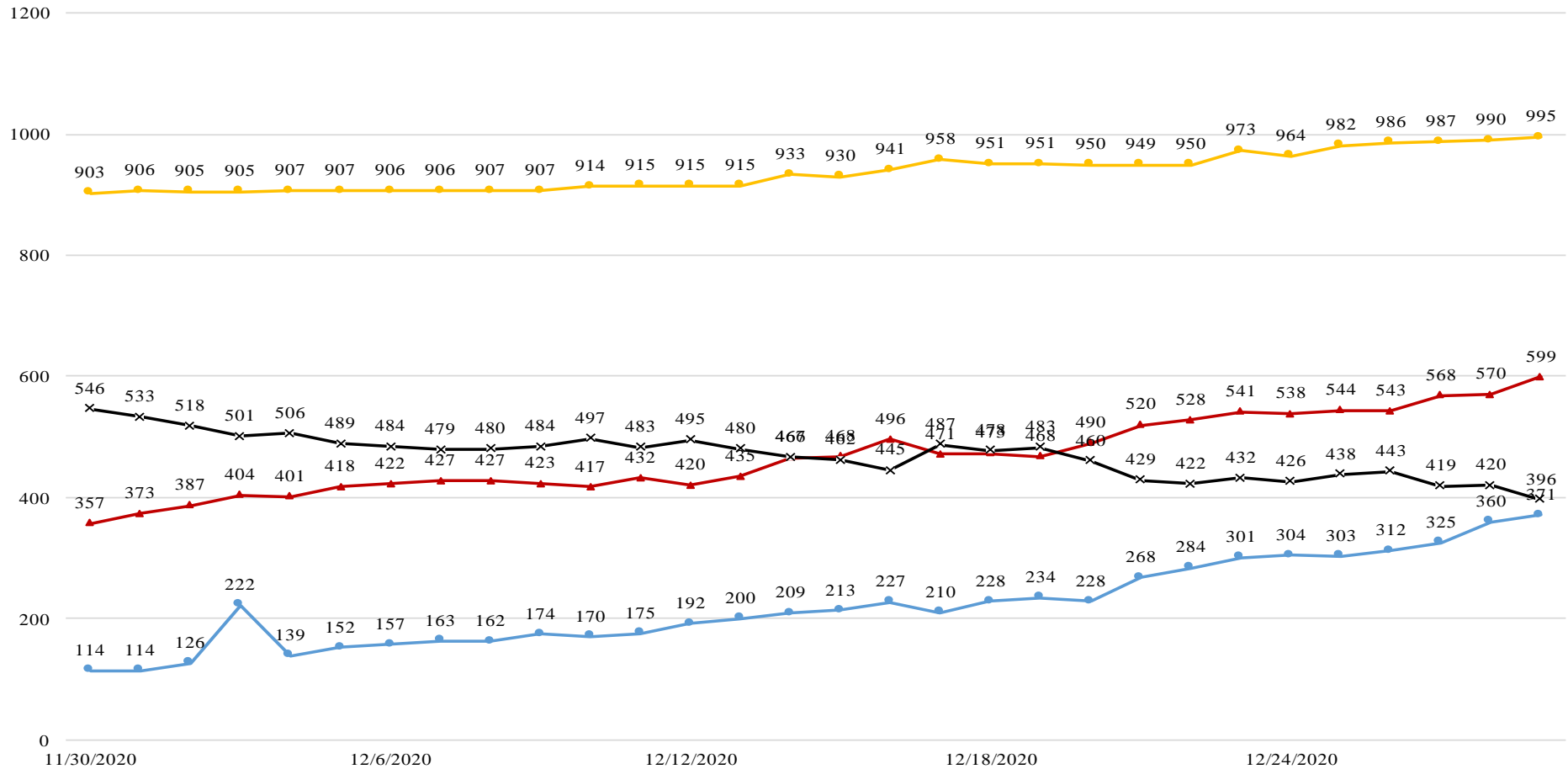


SURGE CENSUS - (12/29/20) | X OCCUPIED- 395 | ● SYSTEM- 1316



12/30/20

COVID 19 ORANGE COUNTY HOSPITAL SYSTEM DATA (CA SNOWFLAKE SERVER)
VENTILATORS IN USE (11/30/20 - 12/29/20) | 33 ACUTE CARE FACILITIES REPORTING



DATE	11/30	12/1	12/2	12/3	12/4	12/5	12/6	12/7	12/8	12/9	12/10	12/11	12/12	12/13	12/14	12/15	12/16	12/17	12/18	12/19	12/20	12/21	12/22	12/23	12/24	12/25	12/26	12/27	12/28	12/29
COVID+ ●	114	114	126	222	139	152	157	163	162	174	170	175	192	200	209	213	227	210	228	234	228	268	284	301	304	303	312	325	360	371
SYSTEM OCC ▲	357	373	387	404	401	418	422	427	427	423	417	432	420	435	466	468	496	471	473	468	490	520	528	541	538	544	543	568	570	599
SYSTEM AVL ✕	546	533	518	501	506	489	484	479	480	484	497	483	495	480	467	462	445	487	478	483	460	429	422	432	426	438	443	419	420	396
SYSTEM TTL ◆	903	906	905	905	907	907	906	906	907	907	914	915	915	915	933	930	941	958	951	951	950	949	950	973	964	982	986	987	990	995

COVID+ = CONFIRMED AND SUSPECTED PATIENTS ON A VENTILATOR

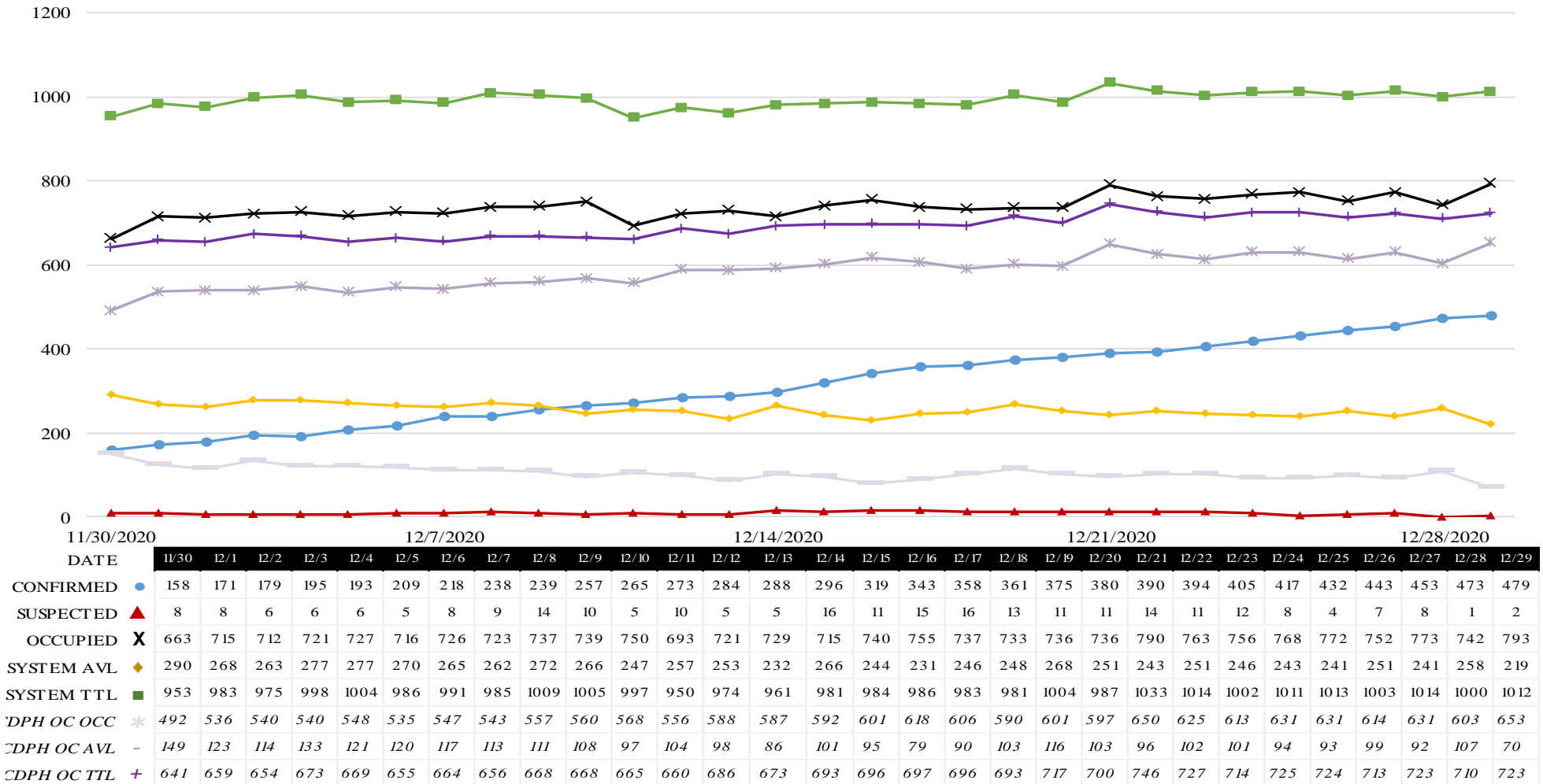
*OCC = VENTILATORS IN USE, INCLUDING COVID+ PATIENTS AND OTHER VENT PATIENTS

**AVL = AVAILABLE VENTILATORS IN SYSTEM

***TTL = TOTAL VENTILATORS IN SYSTEM

12/30/20

COVID 19 ORANGE COUNTY HOSPITAL SYSTEM DATA (CA SNOWFLAKE SERVER)
ICU BEDS (11/30/20 - 12/29/20) | 33 ACUTE CARE FACILITIES REPORTING



*AVL = AVAILABLE NON SURGE ICU BEDS. PRIOR TO 7/22 DEFINITION DID NOT EXCLUDE NONSURGE.

**TTL = TOTAL NON SURGE ICU BEDS. PRIOR TO 7/22 DEFINITION DID NOT EXCLUDE NONSURGE.

*** AS OF 10/20/2020 SPIKE IN SYSTEM TTL, OCCUPIED AND AVAILABLE DUE TO CHANGE IN CHOC ORANGE REPORTED VALUES.

**** CDPH OC OCC = Adult ICU Occupied + Pediatric ICU Occupied

***** CDPH OC AVL = (Adult ICU Total Beds + Pediatric ICU Total Beds) - (Adult ICU Occupied + Pediatric ICU Occupied)

***** CDPH OC TTL = Adult ICU Total + Pediatric ICU Total

*Data Source: California Department of Public Health (CDPH) – Snowflake server

**Current Snowflake Data Dictionary may be found at:

https://www.calhospital.org/sites/main/files/file-attachments/data_dictionary_cha_covid_tracker_4-17-20.pdf

Acute Care Hospital PPE / Ventilator Supplies Days on Hand – (28/33 ACHs reported)

Reporting Date: 12/29/20*	30 days +	15-30 days	7-14 days	4-6 days	0-3 days	Not Reported
Ventilator Supplies**	6	6	14	2	0	5
N95 Masks**	20	6	1	0	1	5
Surgical Masks**	17	7	1	0	0	8
Face Shields**	18	3	4	2	1	5
Gloves**	13	3	5	3	4	5
Gowns**	11	10	5	1	1	5

*Data Source: ReddiNet

Reported Service Category Status (19/25 ACHs w/EDs reported)

Reporting Date: 12/29/20	Count	% of Total
Command Center Activated	14	56%
Surge Plan Activated	14	56%
Canceled Procedures/Services	11	44%
Supply Issues	7	28%
CDPH Flex	12	48%
Increased Morgue Capacity	15	60%

Hospital Criteria for shifting to Crisis Care Strategies

LEGEND

STATUS

CRITERIA	Normal Operations	Modified Operations Under Control	Modified Operations Assistance Needed
Rate of change in Hospitalized COVID-19 patients (doubling time over last 7 days)	Never to 4 weeks to double	4 weeks to 2 weeks to double	Less than 2 weeks to double
Absolute COVID-19 Census in the hospital	Less than 500	500-750	>750
Hospital census as a percentage of capacity	<80%	80% to 90%	>90%
Supply of PPE available in the hospitals	>4 weeks	2 to 4 weeks	< 2 weeks

Hospital Criteria for shifting to Crisis Care Strategies

12/29/20

STATUS

CRITERIA	Normal Operations	Modified Operations Under Control	Modified Operations Assistance Needed
Rate of change in Hospitalized COVID-19 patients (doubling time over last 7 days)	7.37		
Absolute COVID-19 Census in the hospital			2,145
Hospital census as a percentage of capacity	77%		
Supply of PPE available in the hospitals		2-4 weeks	

AGENCY OPERATIONS CENTER / LOGISTICS SECTION

- The AOC will be **CLOSED** Friday, January 1, 2020 in observance of the New Year Holiday.
- The AOC is activated M-F 0900-1600 at Level I; Warehouse Ops are M-F - 0900-1600.
- SCARCE Resources: Gloves, Wipes, Syringes, Needles

Total Activity – Updated 12/29/20 at 1530

INQUIRIES	RR RECEIVED	RR FILLED
16,767 +54	9,593 +52	7,727 +34
Total Denied Requests: 784 / Total Redacted Requests: 813		

Logistics Daily Units Distributed 12-29-20

N95 Mask	4,250
Surgical Mask	0
Gown	1,000
Gloves	29,700
Face Shields/Eye Protection	720
Hand Sanitizer	32
Other	1,359
Total Units	37,061

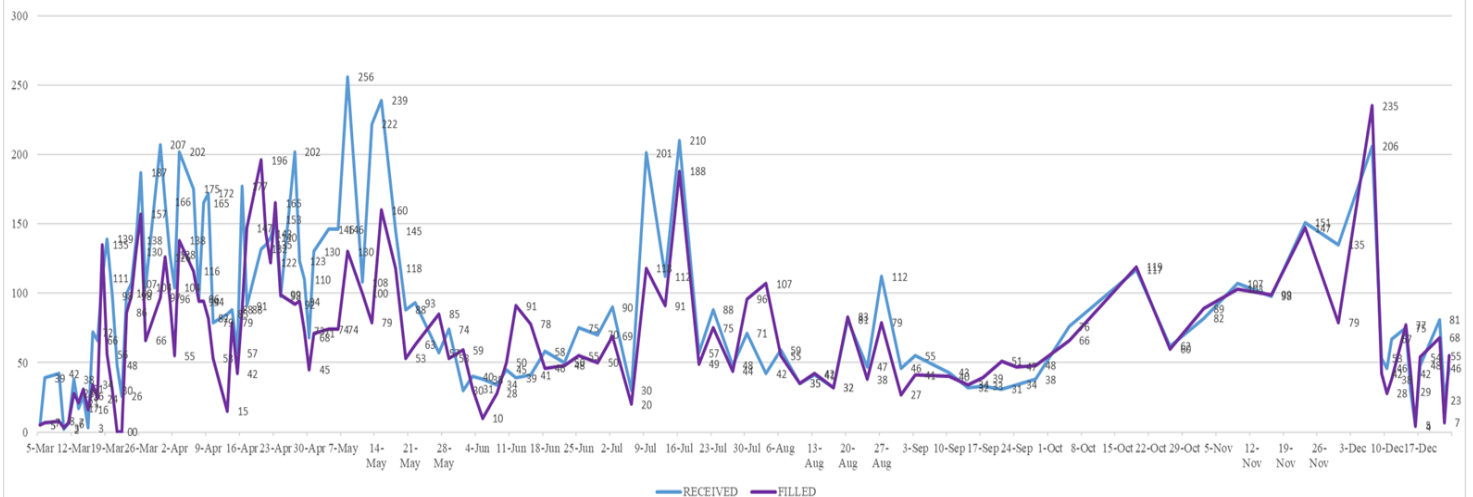
Inventory Report February 18 to December 28, 2020

Medical Supply/Equipment Total Units Distributed

N95 Mask	4,967,115
Surgical Mask	1,954,755
Gowns	1,970,061
PPE-Suit	17,965
Gloves	4,644,450
Eye Protection	379,699
Hand Sanitizer	311,020
Other Items	1,835,552
Total Units	16,080,617

Resource Requests

U:\1 REAL EVENTS\COVID-19\3\ MHOAC\MHOAC Daily Med Health System Overall Status



ALTERNATE CARE SITE (ACS)

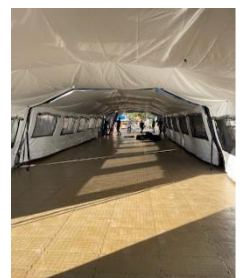
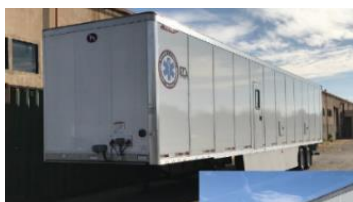
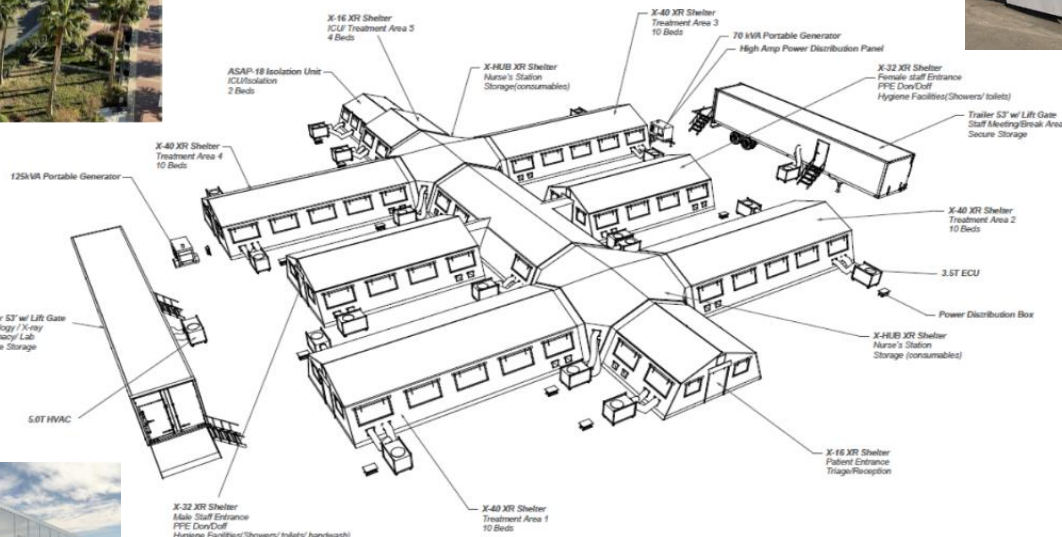
- Fairview Alternate Care Site (FACS) opened for admissions on **TUESDAY, 12/15/20 @ 1800**
- FACS Admissions Guidelines (updated 12.16.20) may be found on the OCEMS website at:
<https://www.healthdisasteroc.org/civicax/filebank/blobdload.aspx?BlobID=118724>

Fairview (COVID-19 +)		
Patient Census (as of 12/30/2020 09:00)	CURRENT	TOTAL
Orange County	8	27
LA County	9	27
Riverside	0	2
San Diego County	0	0
Ventura County	0	0
Total patients CENSUS / TOTAL ACCEPTED	17	56
Patients Discharged		TOTAL
DISCHARGED		39

MOBILE FIELD HOSPITALS

- MFHs are capable of expanding current hospital capacity by adding additional patient beds.
- They are large heavy duty canvas tents with hard flooring and temperature controlled units.
- They can be configured in a myriad of footprints and sizes (i.e. 25-200 bed).
- CDPH is primed and ready to provide hospitals a waiver to allow emergency use of this MFH facility.
- OCEMS is actively deploying multiple MFHs to OC hospitals prepared to receive & operate
 - OCEMS has a total of 8 trailers to support at minimum, 200 patient beds.
 - Hospitals who have self-identified in receiving a MFH include:

- **UCI (50 bed) – confirmed**
- **Fountain Valley (25 bed) – confirmed**
- **Los Alamitos (25 bed) – confirmed**



MOBILE FIELD HOSPITALS

