

OVERVIEW OF CURRENT SITUATION (2/17/21 1022) Source: Johns Hopkins University & Medicine <https://coronavirus.jhu.edu/map.html>

Cases / Deaths
 Worldwide: 109,729,579 / 2,424,897
 Nationwide: 27,775,159 / 488,921
 California: 3,566,965 / 47,549
 Orange Co: 243,329 / 3,644 Source: [Orange County COVID-19 Case Counts & Testing Figures](#)

ORANGE COUNTY PUBLIC HEALTH (as of 2/17/21 1023)

Orange County COVID-19 Summary* click for full details

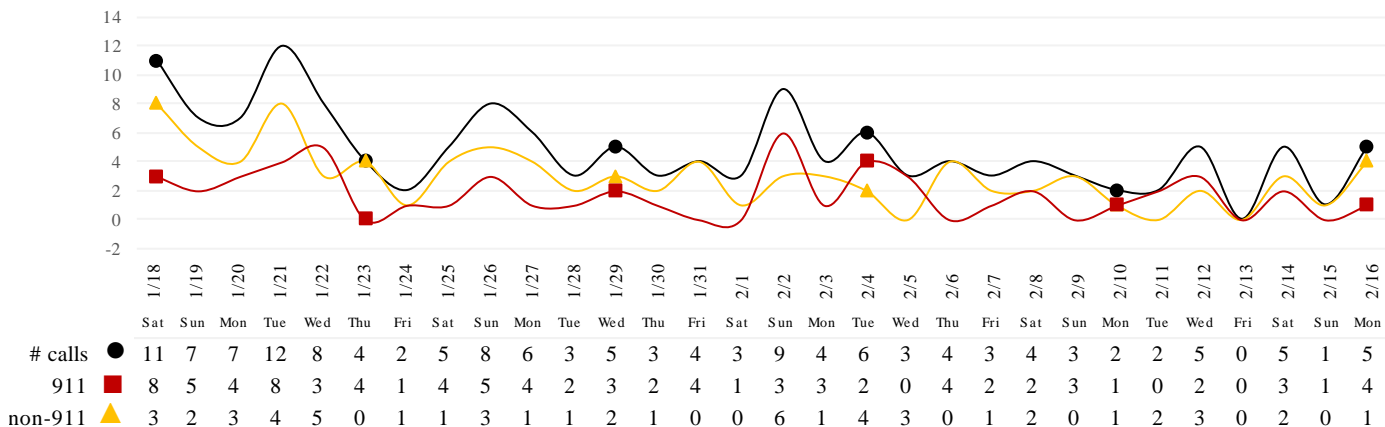
	Thu 2/11/21	Fri 2/12/21	Sat 2/13/21	Sun 2/14/21	Mon 2/15/21	Tue 2/16/21	Wed 2/17/21
Cases Reported to Date	240,999	241,627	242,144	242,505	242,794	243,163	243,329
Deaths Reported to Date	3,493	3,518	3,544	3,577	3,594	3,617	3,644
Tests Reported Today	18,924	15,392	13,926	11,328	7,673	5,651	8,591
Cumulative Tests to Date	2,836,621	2,852,939	2,865,939	2,877,267	2,884,940	2,890,591	2,899,182

*Data posted is always preliminary & subject to change. More information may become available as individual case investigations are completed. **LOCAL DATA MAY BE DIFFERENT FROM THE STATE WEBSITE DATA.**

SKILLED NURSING/ASSISTED LIVING/RESIDENTIAL CARE FACILITY – TRENDS

*Data Source: Orange County Medical Emergency Data System (OC-MEDS) – Updated 2/16/21

Calls to SNFs/Congregate Living with Primary Impressions: Fever/Cough, Influenza-like Illnesses
 (Transports to ERCs Only - Last 30 Days)



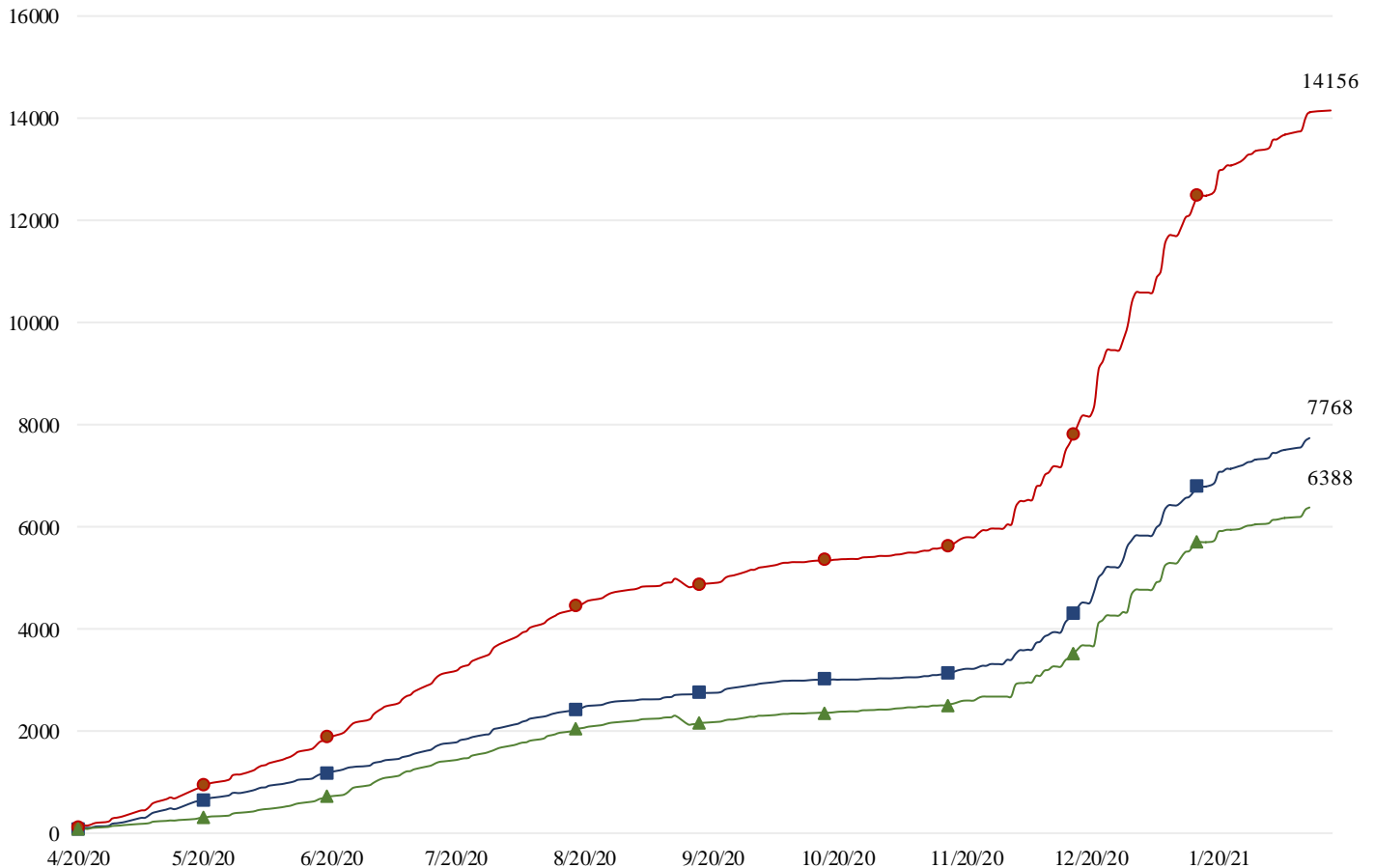
*Data Source: California Department of Public Health (CDPH)

**Skilled Nursing/Assisted Living/Residential Care Facility PPE / Ventilator Supplies Days on Hand
 (68/73 SNFs reported)**

Reporting Date: 2/16/2021	0 - 3 days	4 - 7 days	8-14 days	15+ days
N95 Masks	0	2	11	55
Surgical Masks	0	2	9	57
Eye Protection	0	2	10	56
Gowns	0	2	9	57
Gloves	0	3	8	57
Alcohol-Based Hand Sanitizer	0	2	10	56

*Data Source: Orange County Health Care Agency – Public Health

COVID+ in Congregate Healthcare*



****NOTE**:** Decrease in the COVID + in staff seen on graph is due to data being cleaned and removing duplicates of those that work in multiple OC facilities or are contract staff and care for residents at multiple facilities.

Resident COVID+ ■ Staff COVID+ ▲ Total ●

*Data Source: Orange County Health Care Agency – Public Health

Current Facility Outbreaks (as of 2/17/21 1000)

An “Outbreak” is two (2) or more confirmed cases of COVID-19 in facility occurring within 14 days.

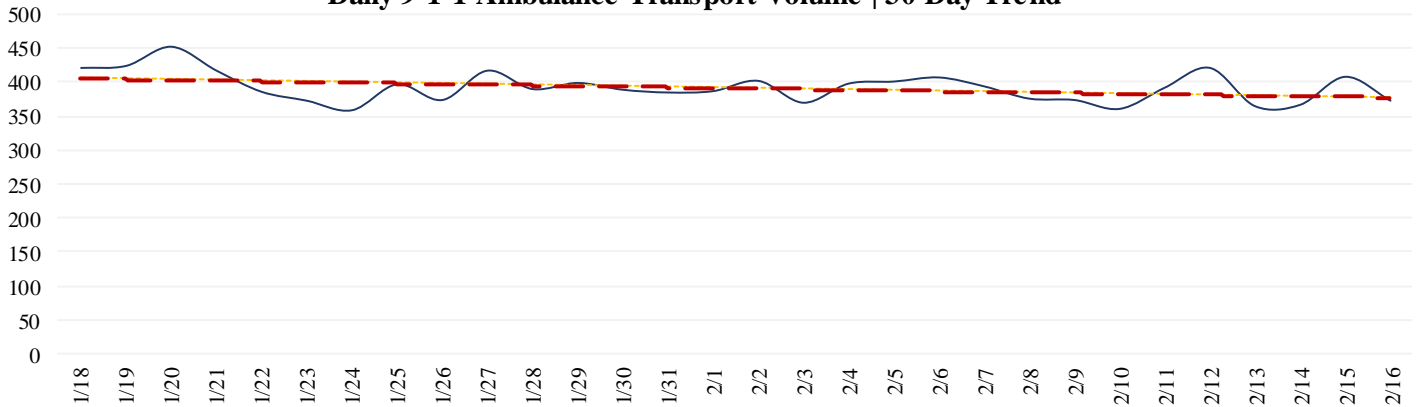
Facility Type by Licensing Category, Count		Facility Name Alphabetical
Skilled Nursing Facility	6	Healthcare Center Of Orange County, Mesa Verde Post Acute Care Center, Orange Healthcare & Wellness Centre, Llc, Orangegrove Rehabilitation Hospital, Palm Terrace Healthcare & Rehabilitation Center, Park Vista At Morningside (Snf)
Elderly Assisted Living	15	Brookdale Brookhurst, Capriana (Oakmont) Vellagio, Gracious Care Home Iii, Irvine Cottage, Janna Marie Guest Home, Meridian At Laguna Hills, Newport Beach Memory Care, Nora's Place 1, Oceanside Senior Home, Park Plaza, Seaside Terrace Retirement Community, Silverado Senior Living - Newport Mesa, Sunrise Assisted Living At Tustin, Sunrise Of Mission Viejo, Westminster Villa

EMERGENCY MEDICAL SERVICES STATUS

*Data Source: Orange County Medical Emergency Data System (OC-MEDS)

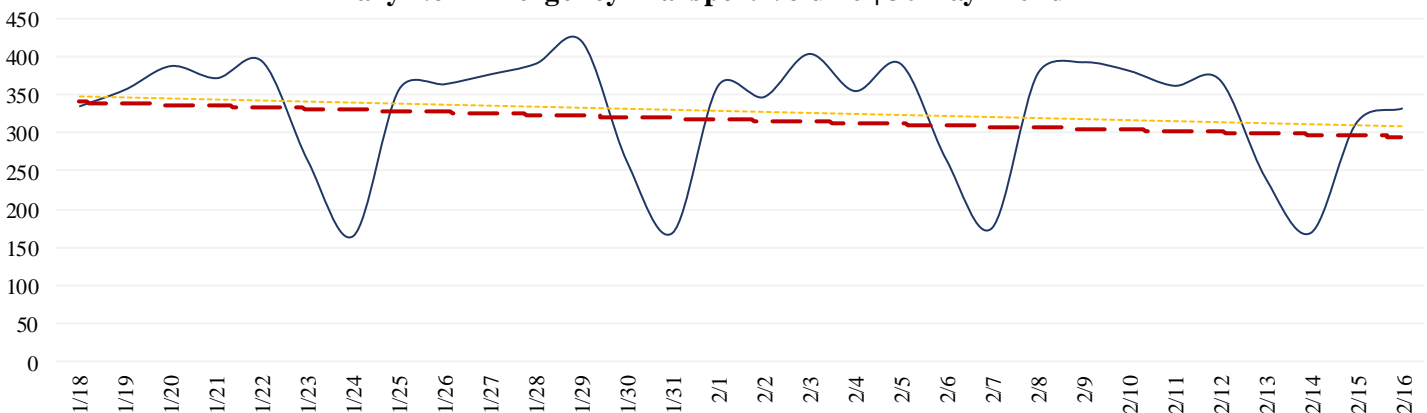
9-1-1 ambulance transport volume is **trending slightly lower**. Volume is averaging about **10-15% below normal** (pre-COVID) levels (Updated 02/17/21).

Daily 9-1-1 Ambulance Transport Volume | 30 Day Trend

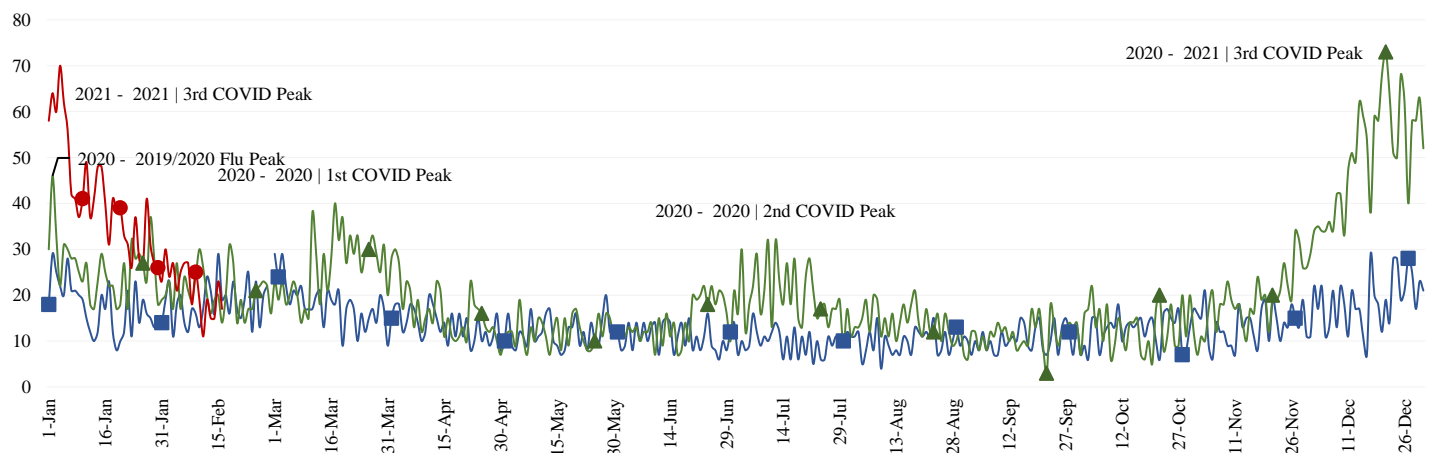


Non-emergency ambulance transports **have declined** this week compared to last week. Transport volume is **averaging about 30-35%** below normal (pre-COVID) levels overall (Updated 02/17/21).

Daily Non-Emergency Transport Volume | 30 Day Trend



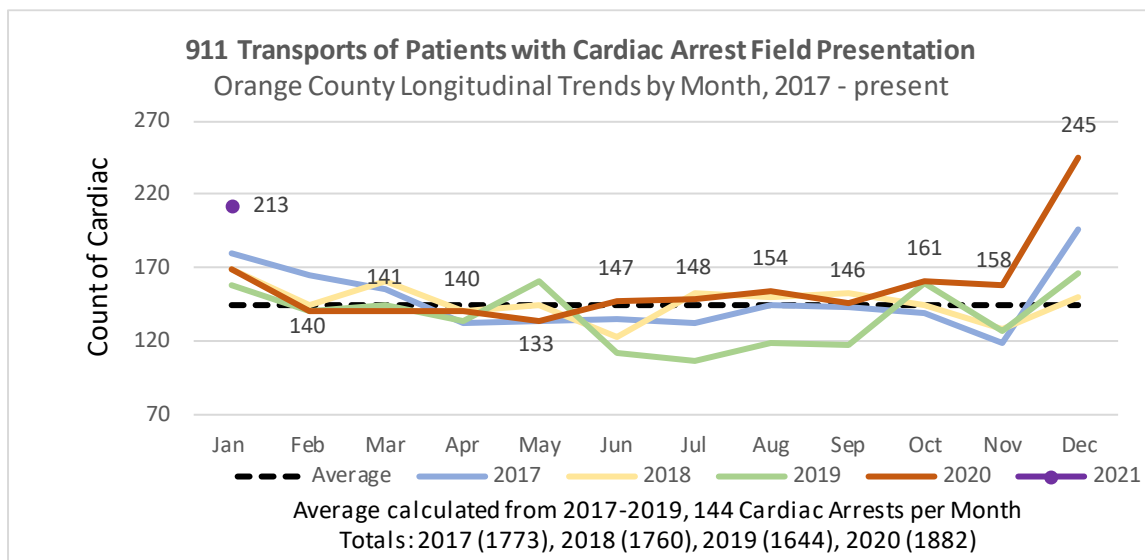
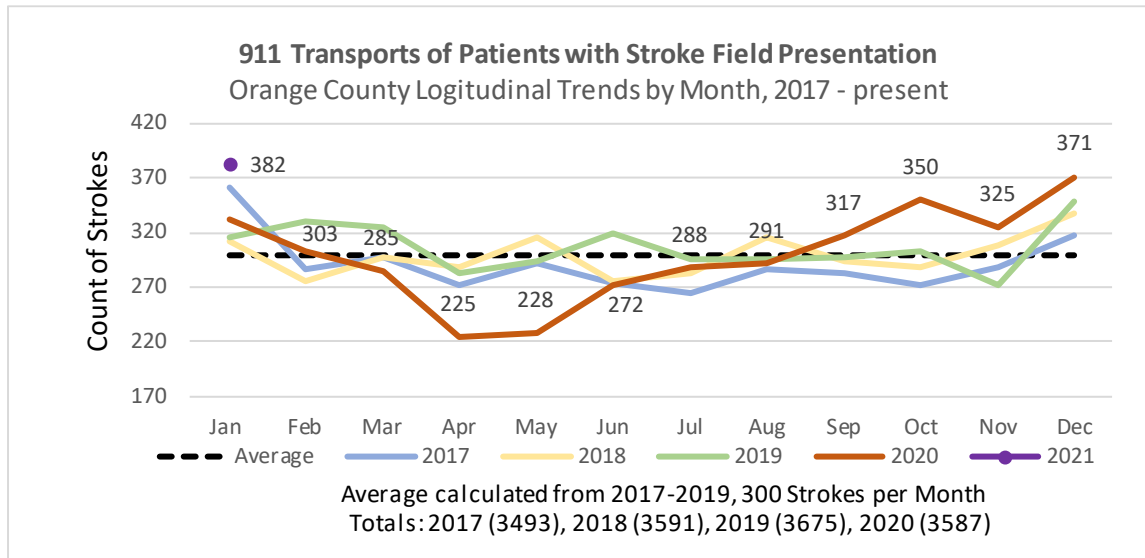
Primary Impressions of Cold/Flu/ILI by 9-1-1 EMS providers **continue to decline and are approaching baseline levels** for this time of year. (Updated 02/17/21).

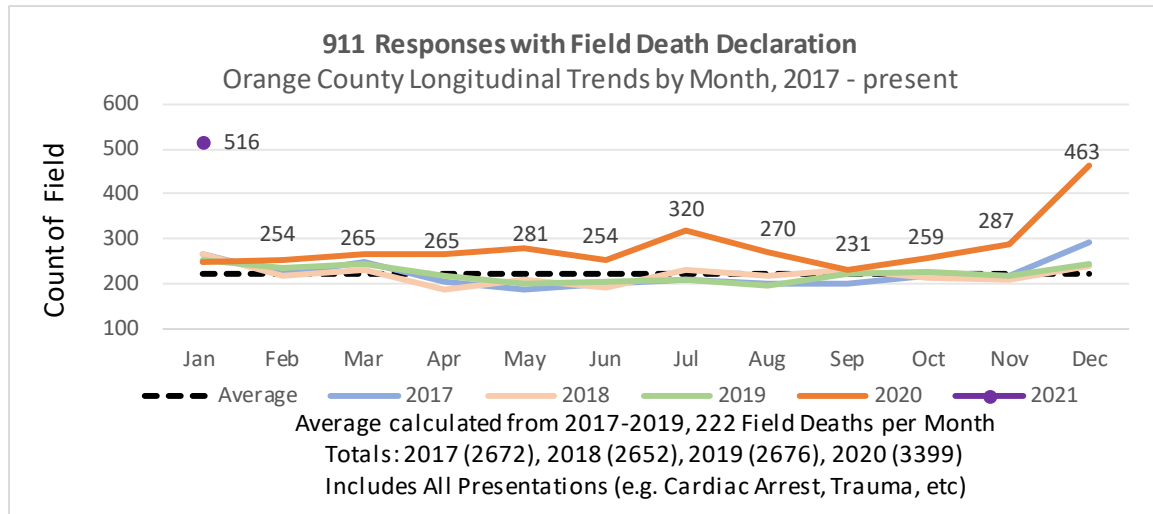


EMS Provider Impressions - Cold/Flu/ILI/COVID-19 Year Over Year Comparison (2019 ■, 2020 ▲, & 2021 ●)

911 EMS SYSTEM MONITORING

*Data Source: Orange County Medical Emergency Data System (OC-MEDS)





Summary Data Table for Chart, “911 Responses with Field Death Declaration”

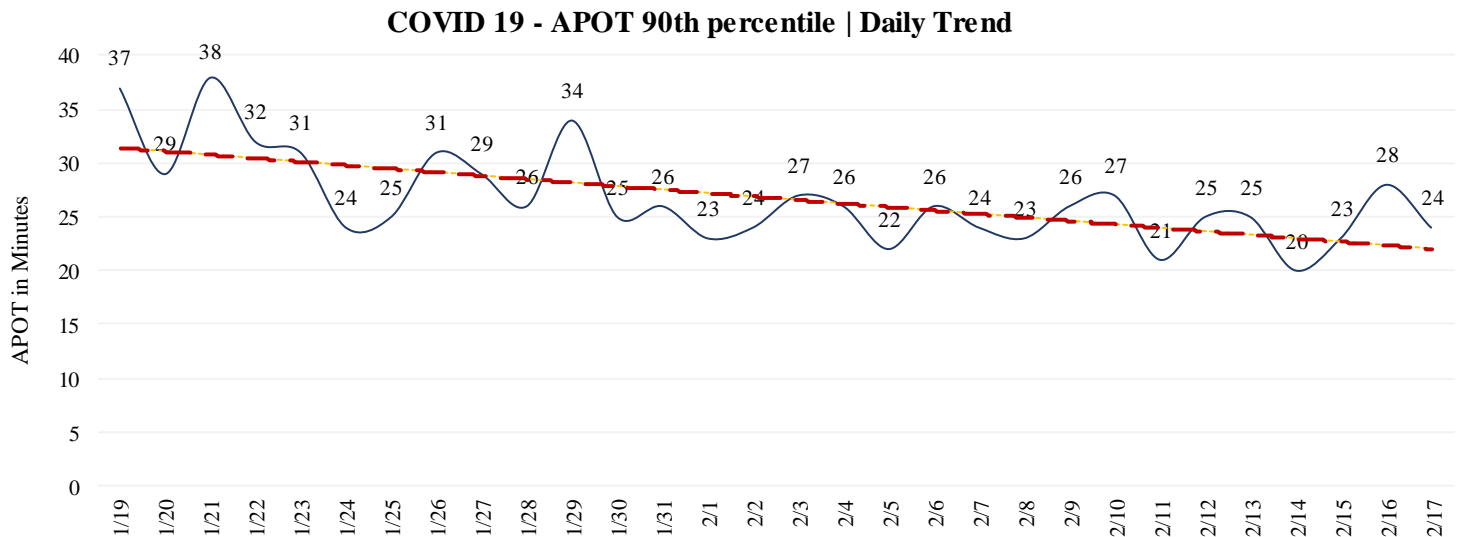
Month	2017	2018	2019	2020	2021
Jan	268	267	254	250	516
Feb	224	216	235	254	
Mar	248	233	245	265	
Apr	206	186	220	265	
May	186	210	202	281	
Jun	201	190	205	254	
Jul	211	233	208	320	
Aug	201	218	195	270	
Sep	199	233	222	231	
Oct	217	213	227	259	
Nov	217	211	217	287	
Dec	294	242	246	463	
Total	2378	2410	2430	3399	

- Ambulance Patient Offload Time (APOT) is defined as the time the ambulance arrives at the receiving destination (wheels stop) to the time that the ambulance crew physically transfers the patient to the ED gurney. Last 24 hours: **Current Average APOT is: 12m26s / Current 90th Percentile APOT is: 24m28s**

The chart below displays a daily trend over the last 30 days.

- Seven (1) ERCs had APOT times greater than thirty (30) minutes.
- One (1) ERCs had APOT times greater than sixty (60) minutes.

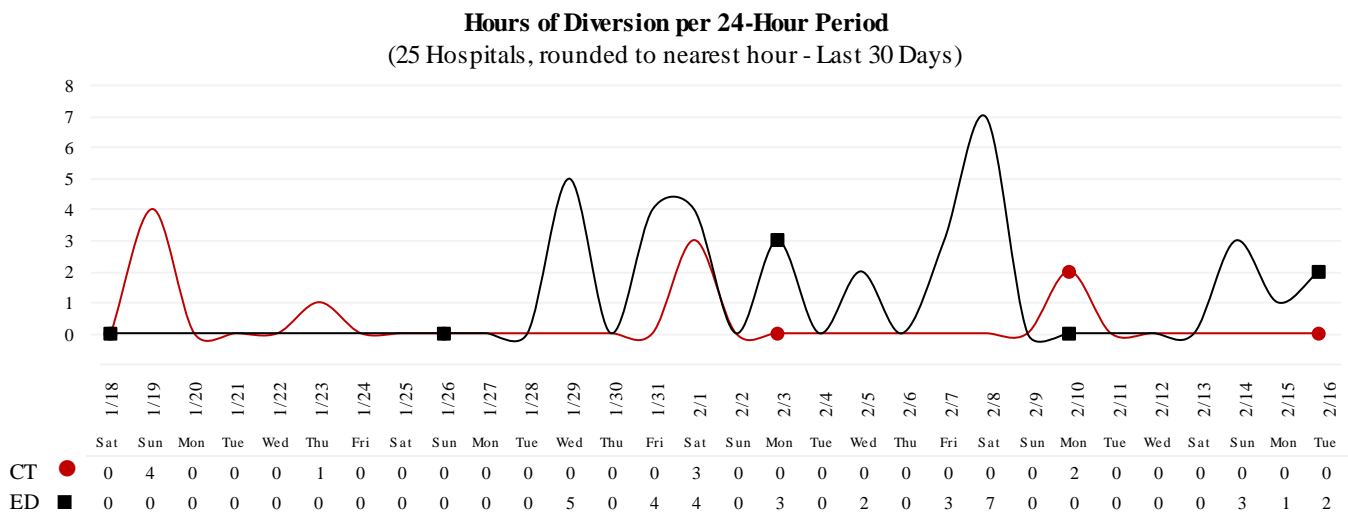
*Data Source: Orange County Medical Emergency Data System (OC-MEDS) – Updated 2/17/21



Note: a handful of ERCs were close to the 30 minute threshold, but were not over it.

- Emergency Department (ED) Diversion & Computerized Tomography (CT) (ED closed to all ambulance transport due to no ED capacity or no CT available) for the last 30 days.
- NOTE: Suspension of Hospital Diversion was reinstated, 1/4/21, @ 1900.**
- NOTE: Hospital Diversion was reinstated on 1/25/21 @ 1900.**

*Data Source: Orange County Medical Emergency Data System (OC-MEDS) – Updated 2/16/21



2/17/21

26: Anaheim Regional, Anaheim Global, Chapman Global, CHOC, CHOC at Mission, Foothill, Fountain Valley, Garden Grove, Hoag-Irvine, Hoag-Newport Beach, Huntington Beach, Kaiser-Anaheim, Kaiser-Irvine, La Palma, Los Alamitos, Mission-Laguna Beach, Mission-Mission Viejo, Orange Coast Memorial, Orange County Global, Placentia Linda, Saddleback Memorial, Saint Jude, South Coast Global, St. Josephs, UCI, West Anaheim

*Data Source: California Department of Public Health (CDPH) – Snowflake server

Current Snowflake Data Dictionary may be found at:

https://www.calhospital.org/sites/main/files/file-attachments/data_dictionary_cha_covid_tracker_4-17-20.pdf

33 HOSPITALS

Date	Census All System	Occupancy % System	COVID+ Hospitalized System	COVID+ Hospitalized ICU Only (Adult & Peds)	% COVID+ hospitalized of ICU Occupied (Adult & Peds)	ICU Occupied (Adult & Peds)**	ICU Available (Adult & Peds)***	% ICU Available (Adult & Peds)****	ICU by Patient Age Group						% Ventilators Available
									Adult Occupied	Adult Available	Adult % Available	Pediatric Occupied	Pediatric Available	Pediatric % Available	
2/3	4035	75%	1238	365	66%	555	98	15%	528	70	12%	27	28	51%	52%
2/4	4034	74%	1233	342	64%	538	112	17%	517	78	13%	21	34	62%	53%
2/5	3957	74%	1164	347	64%	543	101	16%	520	69	12%	23	32	58%	53%
2/6	3846	71%	1093	335	61%	547	103	16%	522	73	12%	25	30	55%	58%
2/7	3741	70%	1046	331	62%	536	97	15%	511	67	12%	25	30	55%	51%
2/8	3693	70%	1058	324	61%	530	101	16%	507	69	12%	23	32	58%	51%
2/9	3800	71%	1009	310	60%	516	114	18%	494	81	14%	22	33	60%	52%
2/10	3699	69%	965	298	61%	490	120	20%	469	86	15%	21	34	62%	51%
2/11	3759	70%	908	290	58%	501	130	21%	484	92	16%	17	38	69%	54%
2/12	3336	67%	742	245	52%	467	115	20%	451	76	14%	16	39	71%	56%
2/13	3689	69%	790	257	51%	507	112	18%	491	73	13%	16	39	71%	56%
2/14	3568	67%	777	242	52%	469	127	21%	452	89	16%	17	38	69%	56%
2/15	3511	67%	748	235	49%	477	136	22%	463	95	17%	14	41	75%	56%
2/16	3492	66%	719	235	48%	487	141	22%	475	98	17%	12	43	78%	57%

ICU occupied PREVIOUSLY ICU CDPH OC Occupied – CDPH combines occupied ICU adult beds and occupied ICU pediatric beds as a reporting metric on their COVID-19 Hospital dashboard. *ICU Available PREVIOUSLY ICU CDPH OC Available – CDPH subtracts the sum of occupied ICU adult beds and occupied ICU pediatric beds, from the sum of ICU total adult beds and ICU total pediatric beds to determine ICU available beds on their COVID-19 Hospital dashboard. ****% ICU AVAILABLE PREVIOUSLY % ICU CDPH OC Available – The sum of occupied ICU adult beds and occupied ICU pediatric beds, divided by the sum of ICU total adult beds and ICU total pediatric beds, as a percentage. *****COVID+ hospitalized of ICU Occupied PREVIOUSLY % ICU Beds System Available – All ICU beds reported as available in Orange County, which includes Adult, PICU, and NICU, and any other ICU bed types.

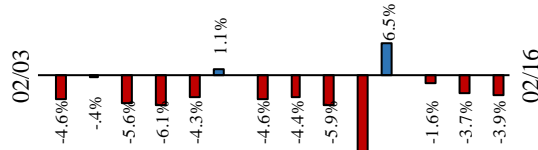
2/17/21

COVID 19 ORANGE COUNTY HOSPITAL SYSTEM DATA (CA SNOWFLAKE SERVER)

COVID+ CENSUS by BED TYPE | 02/16/2021

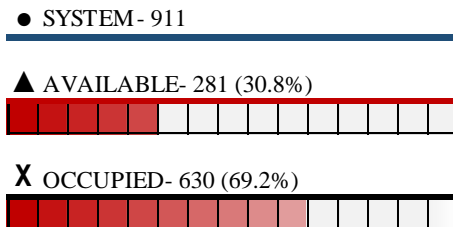
▲ ICU	235	0	0.0%
◆ ED OVERFLOW	22	-1	-4.3%
X NON-ICU	484	-29	-5.7%
● SYSTEM	719	-29	-3.9%
3 Day 02-13-21	790	-71	-9.0%
7 Day 02-09-21	1009	-290	-28.7%

14 Day System COVID+ Change

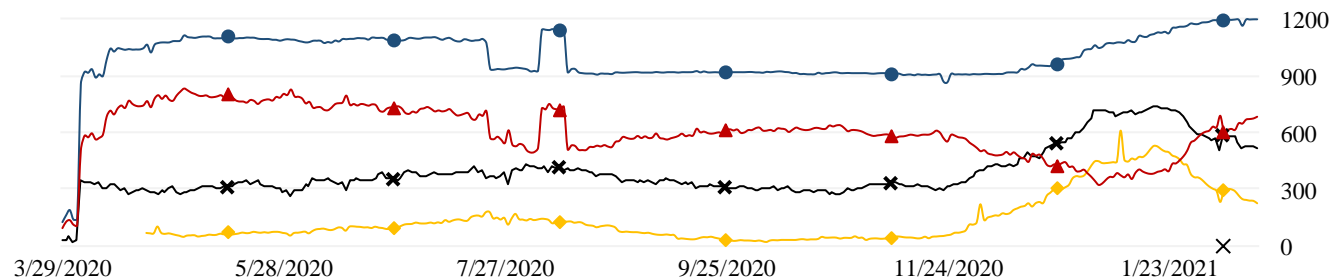
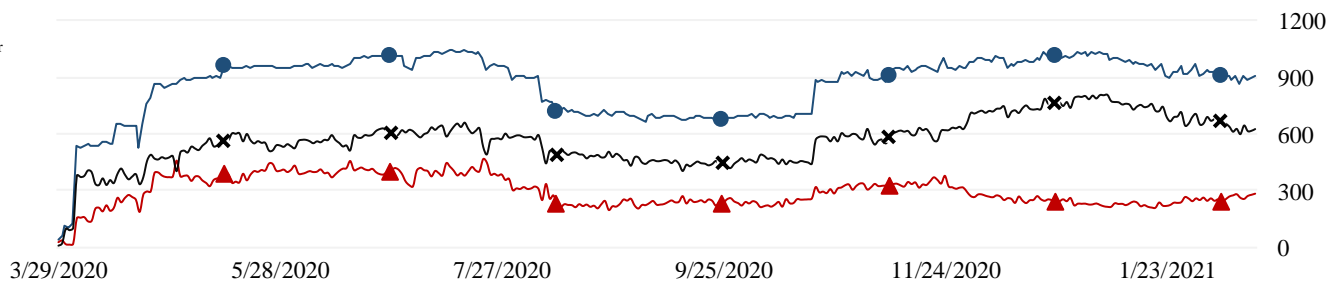
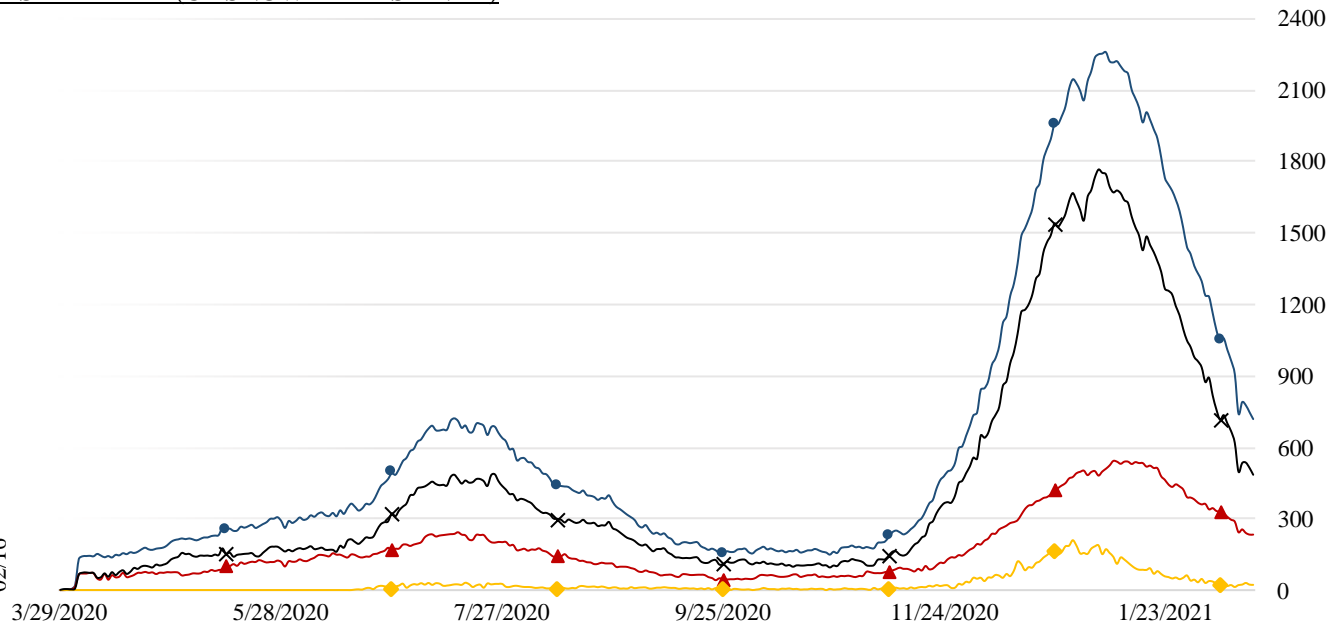
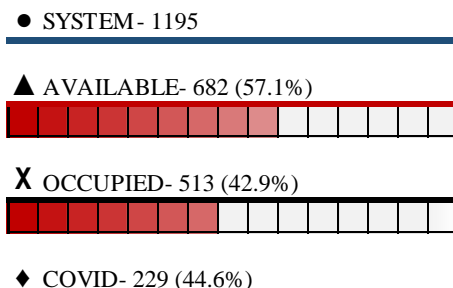


ICU SYSTEM CENSUS | (02/16/21)

*includes adult, PICU, NICU & other



VENTILATORS | (02/16/21)



2/17/21

COVID 19 ORANGE COUNTY HOSPITAL SYSTEM DATA (CA SNOWFLAKE SERVER)

7 DAY HISTORY BED OCCUPANCY | 02/16/2021

● SYSTEM BEDS (INCLUDES SURGE)- 7011

◆ INPATIENT INCLUDING SURGE- 3582 (51.1%)

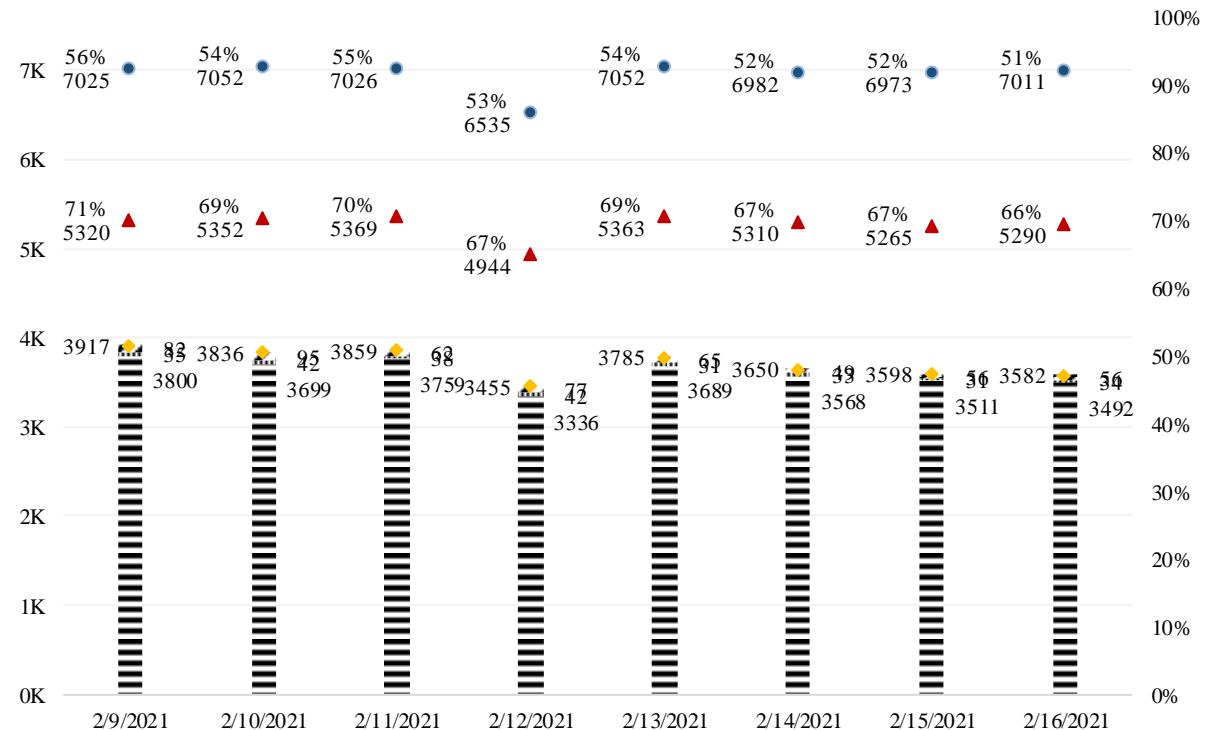


|||| SURGE NON ICU INPATIENT- 34

||||| SURGE ICU INPATIENT- 56

▲ NON SURGE INPATIENT BEDS- 5290

≡ NON SURGE INPATIENT- 3492 (66.0%)



SURGE CENSUS | 02/16/2021

● SURGE BED SYSTEM- 1178 (ICU- 163 | NON ICU- 1015)

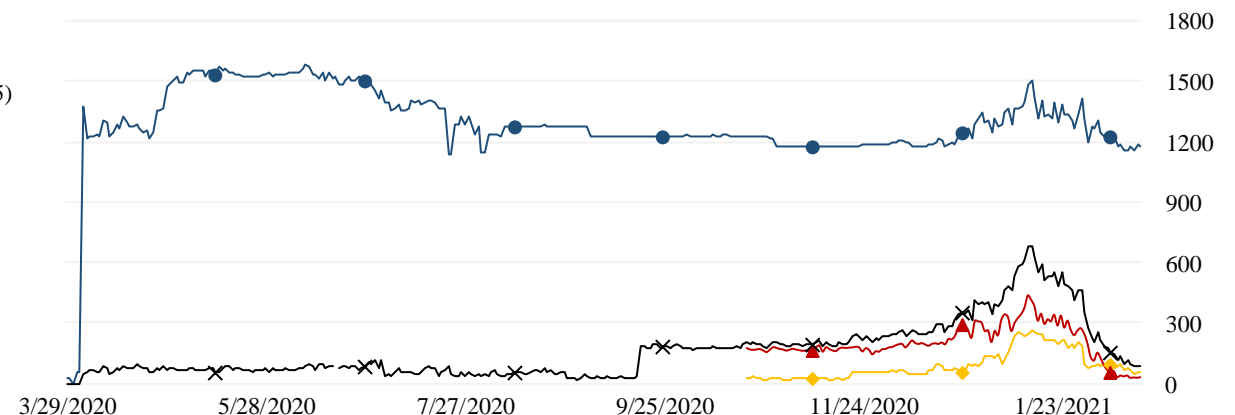
X SURGE BED PATIENTS SYSTEM- 90 (7.6%)



▲ SURGE BED NON ICU PATIENTS- 34 (3.3%)



◆ SURGE BED ICU PATIENTS- 56 (34.4%)



2/17/21

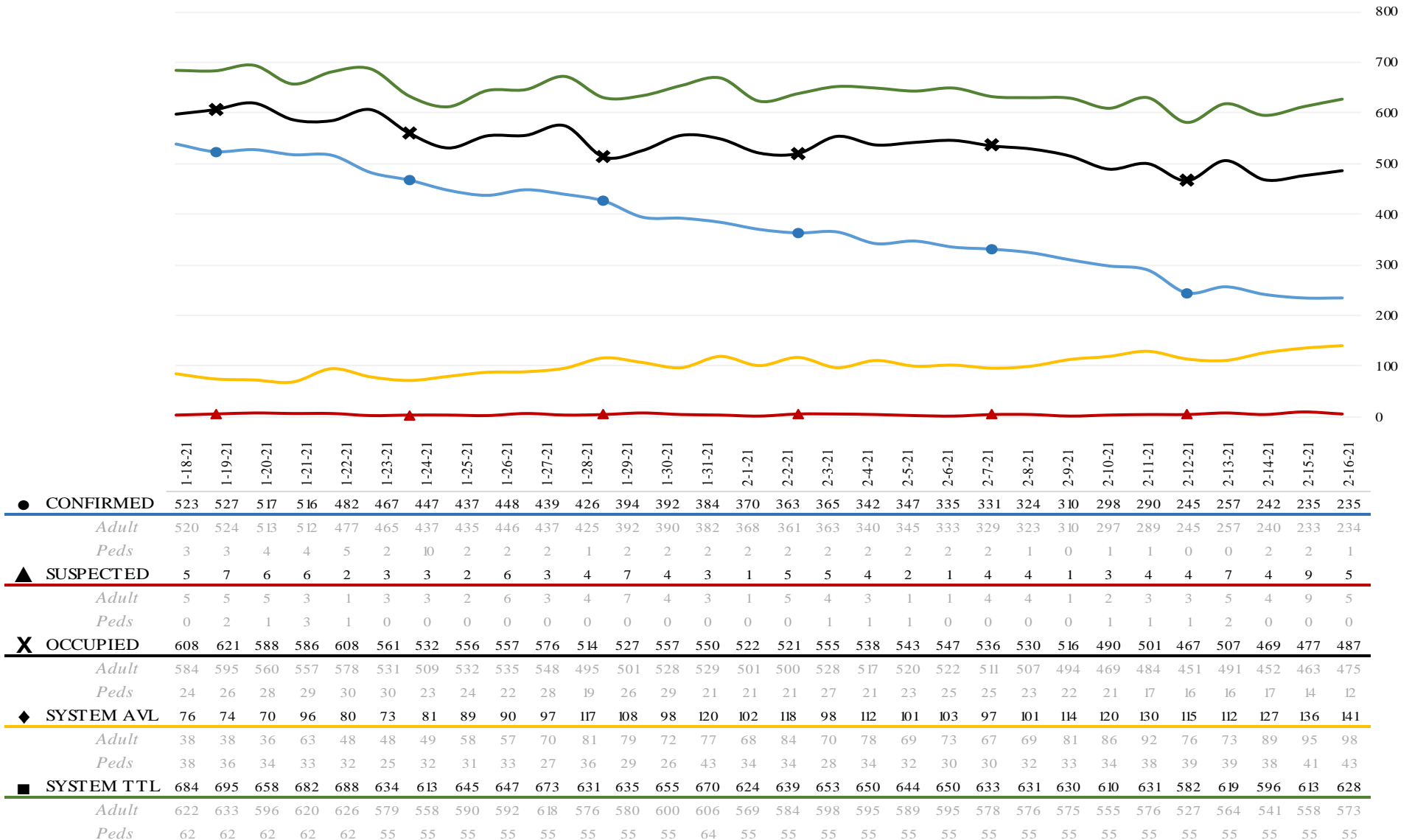
COVID 19 ORANGE COUNTY HOSPITAL SYSTEM DATA (CA SNOWFLAKE SERVER)

NON SURGE ICU BEDS: ADULT & PEDS COMBINED (01/18/21 - 02/16/21) | 33 ACUTE CARE FACILITIES REPORTING

ICU INSIGHTS

01-18-21 thru 02-16-21:

- Confirmed COVID+ in ICU decreased by -
- ▲ Confirmed suspect in ICU had no change at 0.0%.
- ✕ Occupied ICU decreased by -19.9%.
- ◆ Available ICU increased by 85.5%.
- System ICU decreased by -8.2%.



2/17/21

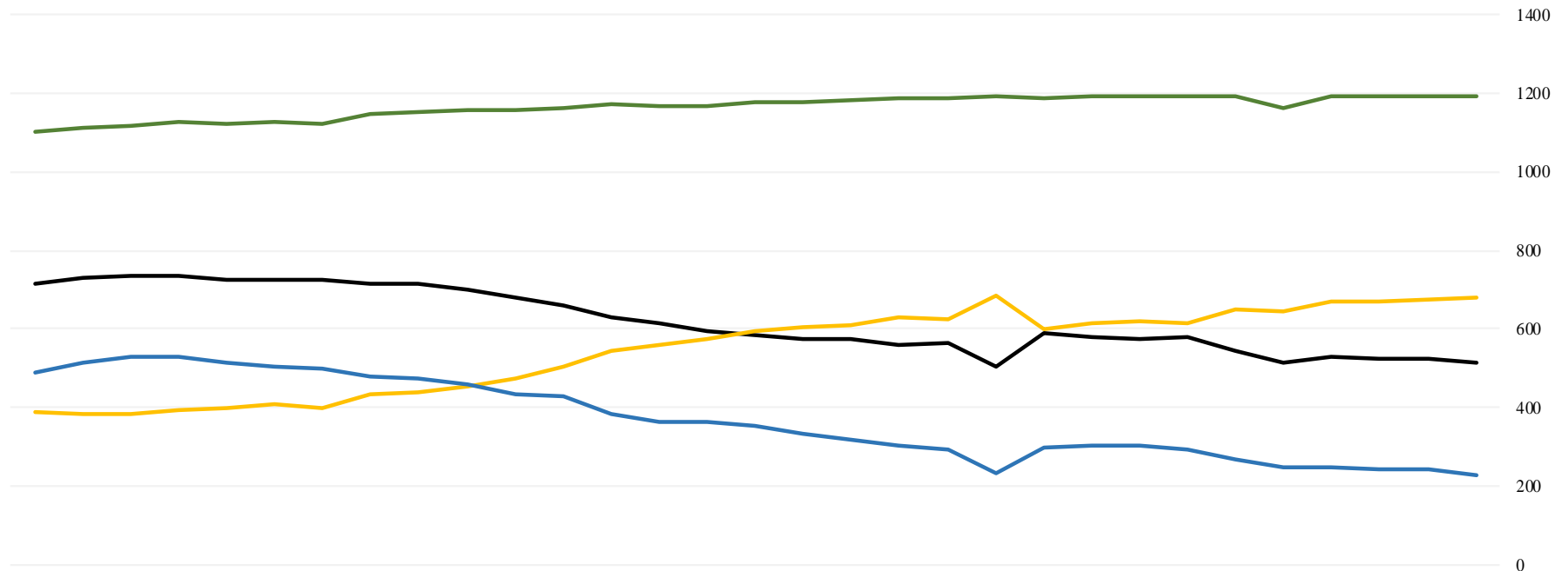
COVID 19 ORANGE COUNTY HOSPITAL SYSTEM DATA (CA SNOWFLAKE SERVER)

VENTILATORS (01/18/21 - 02/16/21) | 33 ACUTE CARE FACILITIES REPORTING

VENTILATOR INSIGHTS

01-18-21 thru 02-16-21:

- Confirmed COVID+ patients on ventilators decreased by -55.7%.
- X Occupied ventilators decreased by -29.8%.
- ◆ System available ventilators increased by 78.5%.
- Total system ventilators increased by 7.4%.



● CONFIRMED	512	531	528	513	502	498	480	473	459	434	430	382	365	364	352	333	316	304	292	234	296	303	301	291	268	249	245	241	240	227
X OCCUPIED	731	733	733	727	723	725	714	714	702	682	658	627	613	594	585	576	573	560	564	504	588	580	574	581	545	515	527	524	522	513
◆ SYSTEM AVL	382	384	393	397	406	396	435	437	454	474	503	546	557	576	593	603	609	630	626	687	601	613	618	613	648	646	667	670	673	682
■ SYSTEM TTL	1113	1117	1126	1124	1129	1121	1149	1151	1156	1156	1161	1173	1170	1170	1178	1179	1182	1190	1190	1191	1189	1193	1192	1194	1193	1161	1194	1194	1195	1195

*Data Source: California Department of Public Health (CDPH) – Snowflake server

**Current Snowflake Data Dictionary may be found at:

https://www.calhospital.org/sites/main/files/file-attachments/data_dictionary_cha_covid_tracker_4-17-20.pdf

Acute Care Hospital PPE / Ventilator Supplies Days on Hand – (30/33 ACHs reported)

Reporting Date: 2/16/21*	30 days +	15-30 days	7-14 days	4-6 days	0-3 days	Not Reported
Ventilator Supplies**	8	6	14	2	0	3
N95 Masks**	20	9	0	0	0	4
Surgical Masks**	21	6	2	0	0	4
Face Shields**	18	4	3	4	0	4
Gloves**	14	4	9	2	0	4
Gowns**	15	6	6	1	1	4

Hospital Criteria for shifting to Crisis Care Strategies

LEGEND

CRITERIA	STATUS		
	Normal Operations	Modified Operations	Modified Operations Assistance Needed
Rate of change in Hospitalized COVID-19 patients (doubling time over last 7 days)	Never to 4 weeks to double	4 weeks to 2 weeks to double	Less than 2 weeks to double
Absolute COVID-19 Census in the hospitals across Orange County	Less than 750	750-1500	>1500
Hospital census as a percentage of staffed capacity	<80%	80% to 90%	>90%
Hospital ICU census as a percentage of staffed ICU capacity	<70%	70% to 85%	>85%

Hospital Criteria for shifting to Crisis Care Strategies

2/16/21

CRITERIA	STATUS		
	Normal Operations	Modified Operations Under Control	Modified Operations Assistance Needed
Rate of change in Hospitalized COVID-19 patients (doubling time over last 7 days)	Declining		
Absolute COVID-19 Census in the hospitals across Orange County	719		
Hospital census as a percentage of staffed capacity	66%		
Hospital ICU census as a percentage of staffed ICU capacity		78%	

AGENCY OPERATIONS CENTER / LOGISTICS SECTION

- The AOC is activated on **Wednesdays from 0900-1600 at Level II**; Warehouse Ops are M-F - 0900-1600.
- SCARCE Resources: Gloves, Syringes, Needles

Total Activity – Updated 2/10/21 at 1530

INQUIRIES	RR RECEIVED	RR FILLED
18,029 +148	10,610 +127	8,612 +114
Total Denied Requests: 872 / Total Redacted Requests: 937		

Inventory Report 02/18/20 to 02/11/21

Logistics Daily Units Distributed 2/10/21

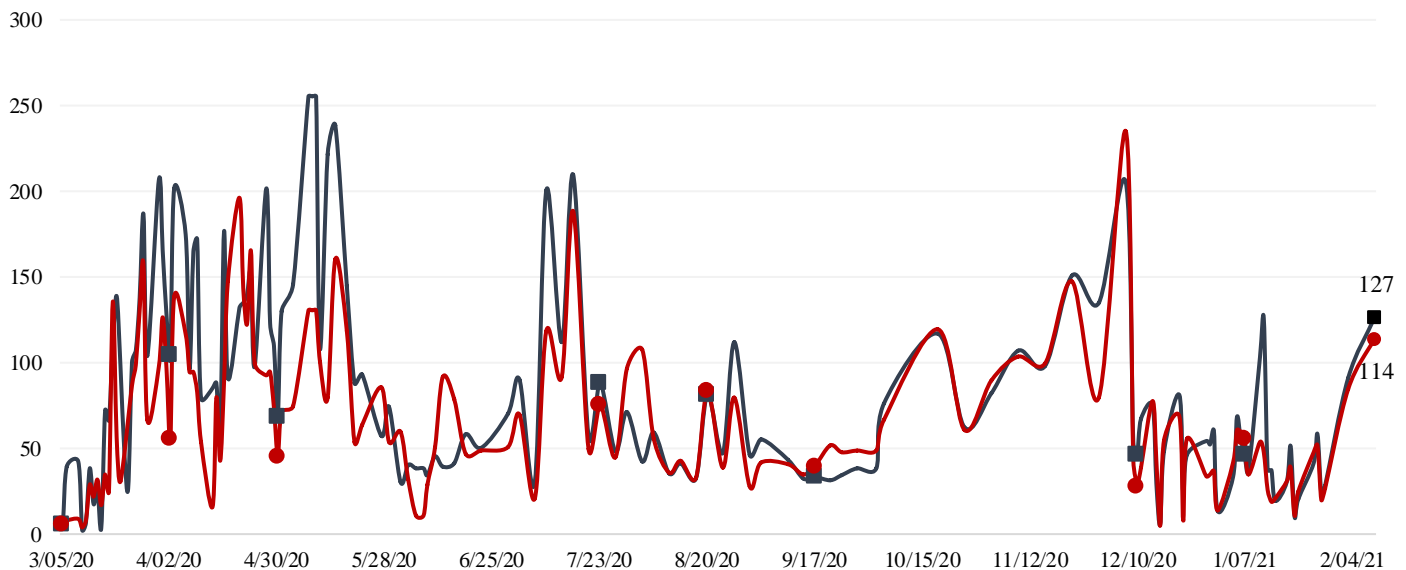
N95 Mask	15,200
Surgical Mask	17,800
Gown	7,700
Gloves	84,000
Face Shields/Eye Protection	2,375
Hand Sanitizer	300
Other	30,774
Total Units	158,149

Medical Supply/Equipment Total Units Distributed

N95 Mask	5,128,235
Surgical Mask	2,040,005
Gowns	2,805,516
PPE-Suit	17,965
Gloves	6,460,450
Eye Protection	416,984
Hand Sanitizer	313,723
Other Items	2,588,043
Total Units	19,770,921

Resource Requests - Updated 2/10/21 at 1530

Received ■ Filled ●



ALTERNATE CARE SITE (ACS)

- Fairview Alternate Care Site (FACS) opened for admissions on **TUESDAY, 12/15/20 @ 1800**
- FACS Admissions Guidelines (updated 12.16.20) may be found on the OCEMS website at:
<https://www.healthdisasteroc.org/civicax/filebank/blobdload.aspx?BlobID=118724>

Fairview (COVID-19 +)		
Patient Census (as of 2/17/2021 09:00)	CURRENT	TOTAL
Orange County	17	129
LA County	12	69
Riverside	2	5
San Bernadino County	0	4
Ventura County	0	1
Total patients CENSUS / TOTAL ACCEPTED	31	208
Patients Discharged		TOTAL
DISCHARGED		177
Memory Care Unit (MCU) Census (as of 2/16/2021 17:00)		
MCU Patient Census	11	46
Patients Discharged from MCU		TOTAL
MCU - DISCHARGED		35

MOBILE FIELD HOSPITALS

- MFHs are capable of expanding current hospital capacity by adding additional patient beds.
- They are large heavy duty canvas tents with hard flooring and temperature controlled units.
- They can be configured in a myriad of footprints and sizes (i.e. 25-200 bed).
- CDPH is primed and ready to provide hospitals a waiver to allow emergency use of this MFH facility.
- OCEMS is actively deploying multiple MFHs to OC hospitals prepared to receive & operate
 - OCEMS has a total of 8 trailers to support at minimum, 200 patient beds.
 - Hospitals who have self-identified in receiving a MFH include:

- UCI (50 bed) – confirmed
- Fountain Valley (25 bed) – confirmed
- Los Alamitos (25 bed) – confirmed
- Saint Jude (50 bed) – confirmed

