

OVERVIEW OF CURRENT SITUATION (2/3/21 1022)

Source: Johns Hopkins University & Medicine <https://coronavirus.jhu.edu/map.html>

Cases / Deaths
 Worldwide: 104,077,986 / 2,259,391
 Nationwide: 26,454,319 / 447,852
 California: 3,355,979 / 41,902
 Orange Co: 234,708 / 3,199 Source: [Orange County COVID-19 Case Counts & Testing Figures](#)

ORANGE COUNTY PUBLIC HEALTH (as of 2/3/21 0952)

Orange County COVID-19 Summary* click for full details

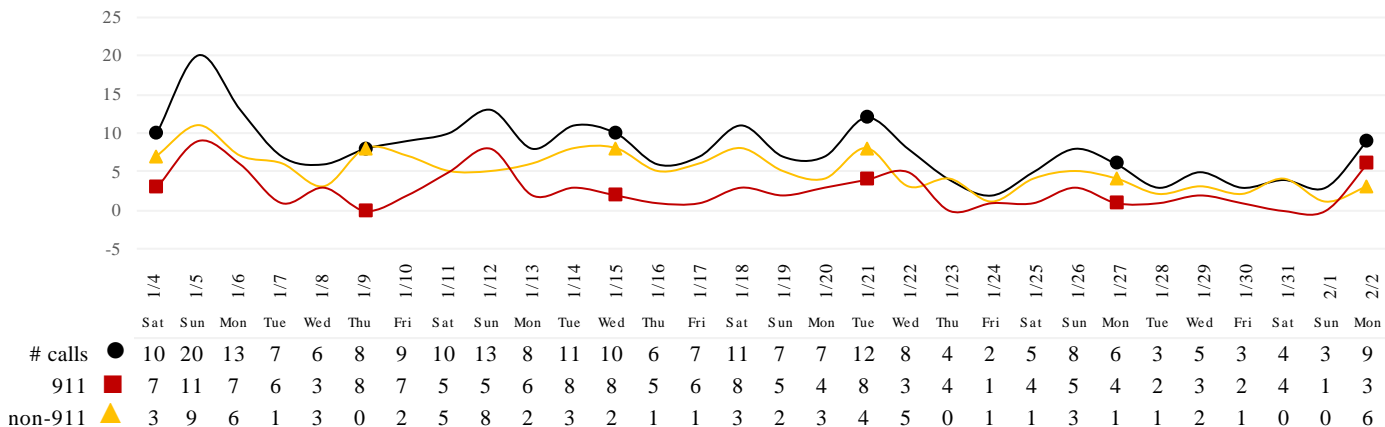
	Thu 1/28/21	Fri 1/29/21	Sat 1/30/21	Sun 1/31/21	Mon 2/1/21	Tue 2/2/21	Wed 2/3/21
Cases Reported to Date	228,297	229,757	231,036	232,391	233,394	234,162	234,708
Deaths Reported to Date	2,868	2,975	3,018	3,062	3,109	3,162	3,199
Tests Reported Today	19,733	21,584	22,215	16,044	11,640	8,625	14,219
Cumulative Tests to Date	2,621,830	2,643,414	2,665,629	2,681,673	2,693,313	2,701,938	2,716,157

*Data posted is always preliminary & subject to change. More information may become available as individual case investigations are completed. **LOCAL DATA MAY BE DIFFERENT FROM THE STATE WEBSITE DATA.**

SKILLED NURSING/ASSISTED LIVING/RESIDENTIAL CARE FACILITY – TRENDS

*Data Source: Orange County Medical Emergency Data System (OC-MEDS) – Updated 2/2/21

Calls to SNFs/Congregate Living with Primary Impressions: Fever/Cough, Influenza-like Illnesses
 (Transports to ERCs Only - Last 30 Days)



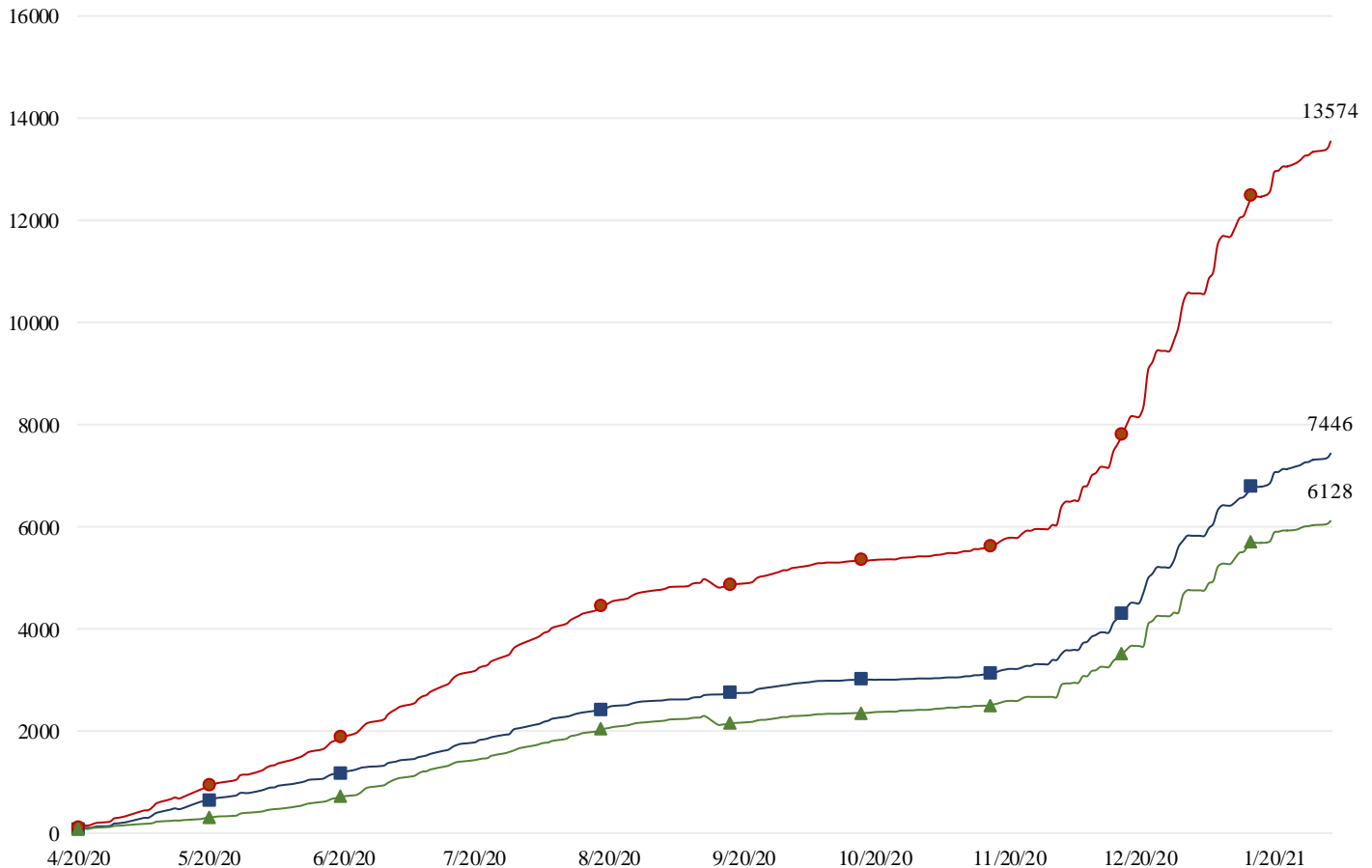
*Data Source: California Department of Public Health (CDPH)

**Skilled Nursing/Assisted Living/Residential Care Facility PPE / Ventilator Supplies Days on Hand
 (69/73 SNFs reported)**

Reporting Date: 1/28/2021	0 - 3 days	4 - 7 days	8-14 days	15+ days
N95 Masks	0	2	12	55
Surgical Masks	0	2	11	56
Eye Protection	0	2	11	56
Gowns	0	3	10	56
Gloves	0	3	11	55
Alcohol-Based Hand Sanitizer	0	3	11	55

*Data Source: Orange County Health Care Agency – Public Health

COVID+ in Congregate Healthcare*



****NOTE**:** Decrease in the COVID + in staff seen on graph is due to data being cleaned and removing duplicates of those that work in multiple OC facilities or are contract staff and care for residents at multiple facilities.

Resident COVID+ ■ Staff COVID+ ▲ Total ●

*Data Source: Orange County Health Care Agency – Public Health

Current Facility Outbreaks (as of 2/3/21 1000)

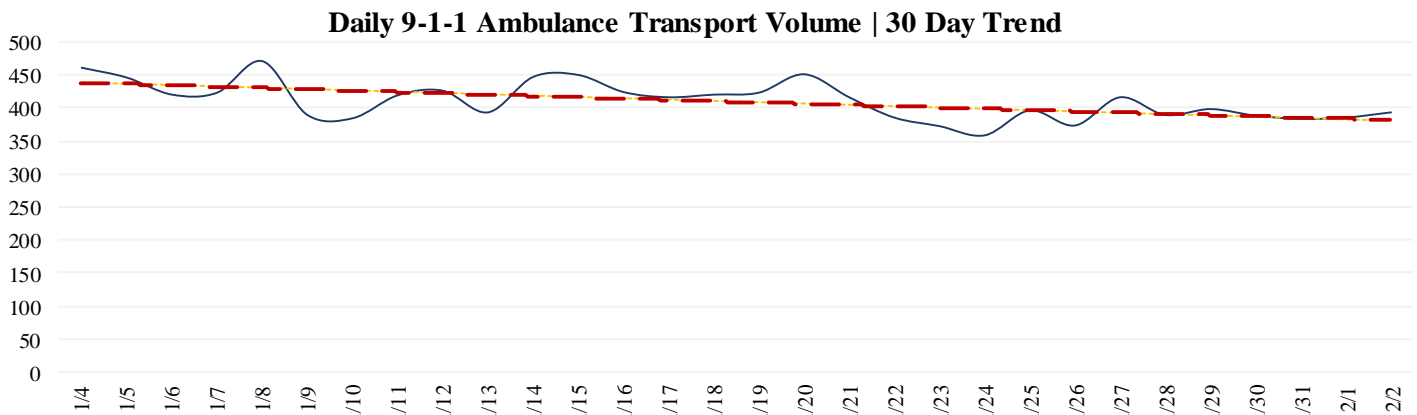
An “Outbreak” is two (2) or more confirmed cases of COVID-19 in facility occurring within 14 days.

Facility Type by Licensing Category, Count		Facility Name Alphabetical
Skilled Nursing Facility	19	Anaheim Crest Nursing Center, Chapman Care Center, Coventry Court Health Center, French Park Care Center, Gordon Lane Care Center, Healthcare Center Of Orange County, Lake Forest Nursing Center, Orange Healthcare & Wellness Centre, Llc, Orangegrove Rehabilitation Hospital, Pacific Haven Subacute And Healthcare Center, Palm Terrace Healthcare & Rehabilitation Center, Park Anaheim Healthcare Center, Park Regency Care Center, Park Vista At Morningside (Snf), Seal Beach Health And Rehabilitation Center, St. Catherine, St. Edna Subacute And Rehabilitation Center, Terrace View Care Center, West Anaheim Extended Care
Elderly Assisted Living	28	Aegis Assisted Living Of Laguna Niguel, Atria San Juan, Brookdale Brookhurst, Capriana (Oakmont), Capriana (Oakmont) Vellagio, Fullerton Gardens, Fullerton Villa, Harbor Heights Of Meridian, Hill Manor Elderly Care, Irvine Cottage #7, Janeen Home B&C, Las Palmas, Meridian At Laguna Hills, Newport Beach Memory Care, Park Plaza, Seaside Terrace I, Seaside Terrace II, Seaside Terrace Retirement Community, Serento Rosa (Alf), Silverado Senior Living - Newport Mesa, St. Francis Home, Sunrise Assisted Living Of Fullerton, The Covington, Town And Country Manor (Alf), Vivante On The Coast, West Glenn Manor, Westminster Villa, Woodbridge Terrace Of Irvine

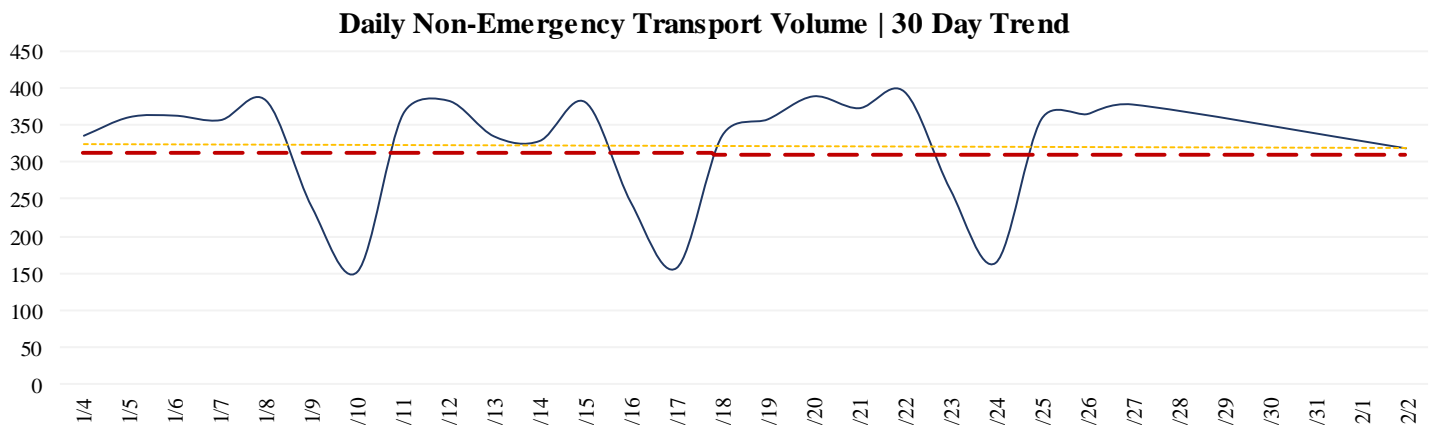
EMERGENCY MEDICAL SERVICES STATUS

*Data Source: Orange County Medical Emergency Data System (OC-MEDS)

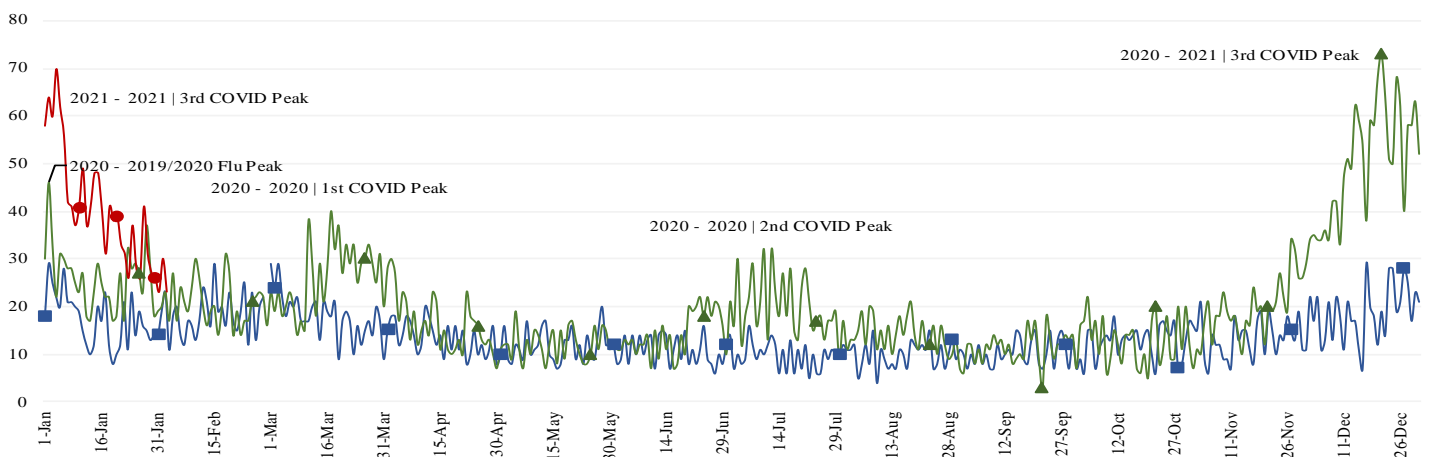
9-1-1 ambulance transport volume **has stabilized** after a two week decline. **Volume is averaging about 10% below normal** (pre-COVID) levels (Updated 02/3/21).



Non-emergency ambulance transports **have stabilized**. Transport volume is **averaging about 30-35%** below normal (pre-COVID) levels overall (Updated 02/3/21).



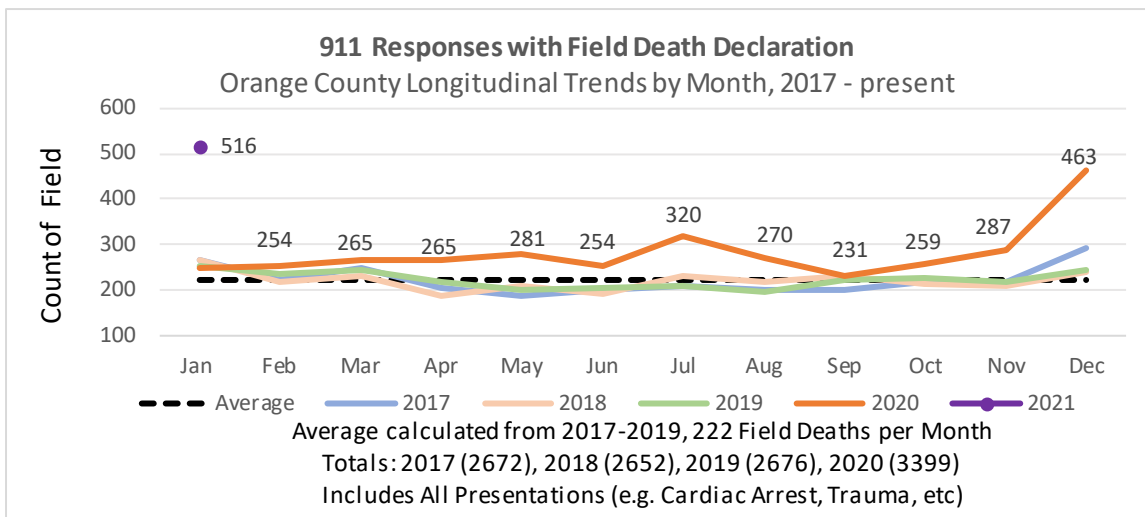
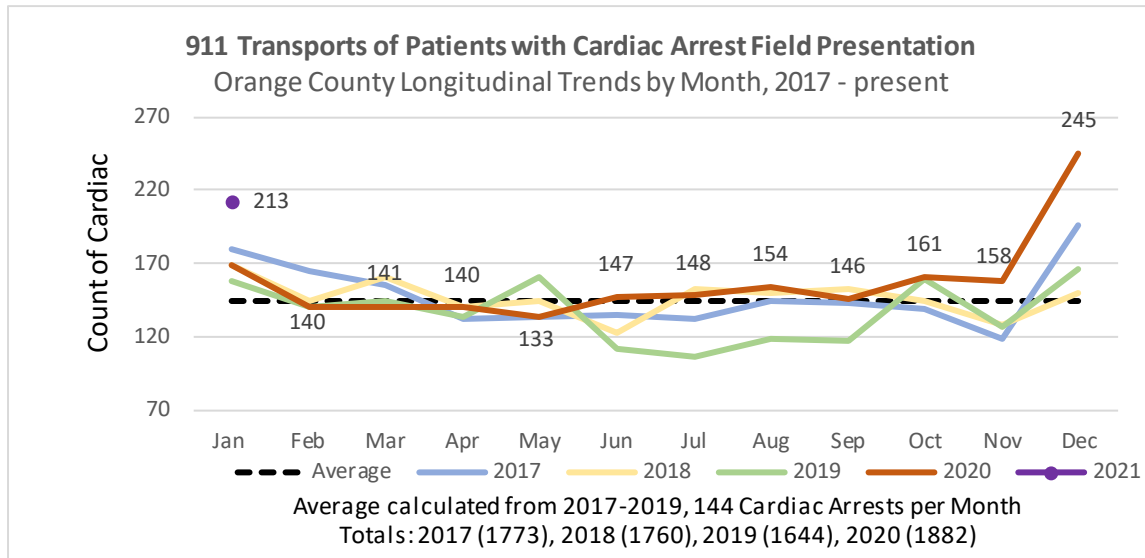
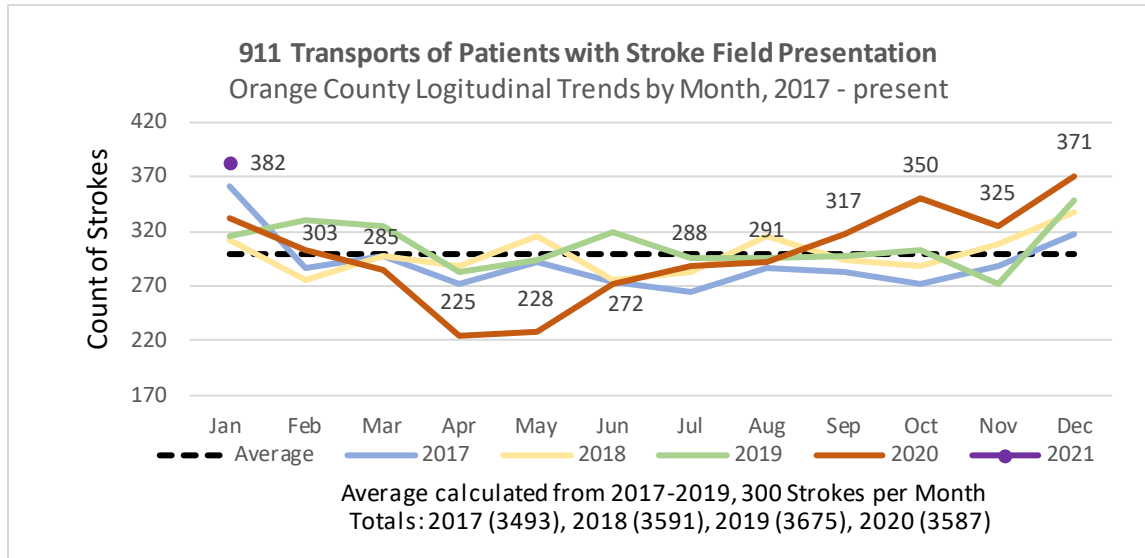
Primary Impressions of Cold/Flu/ILI by 9-1-1 EMS providers **continue to trend lower** from the peak reached in late December 2020.. (Updated 02/3/21).



EMS Provider Impressions - Cold/Flu/ILI/COVID-19 Year Over Year Comparison (2019 ■, 2020 ▲, & 2021 ▲)

911 EMS SYSTEM MONITORING

*Data Source: Orange County Medical Emergency Data System (OC-MEDS)



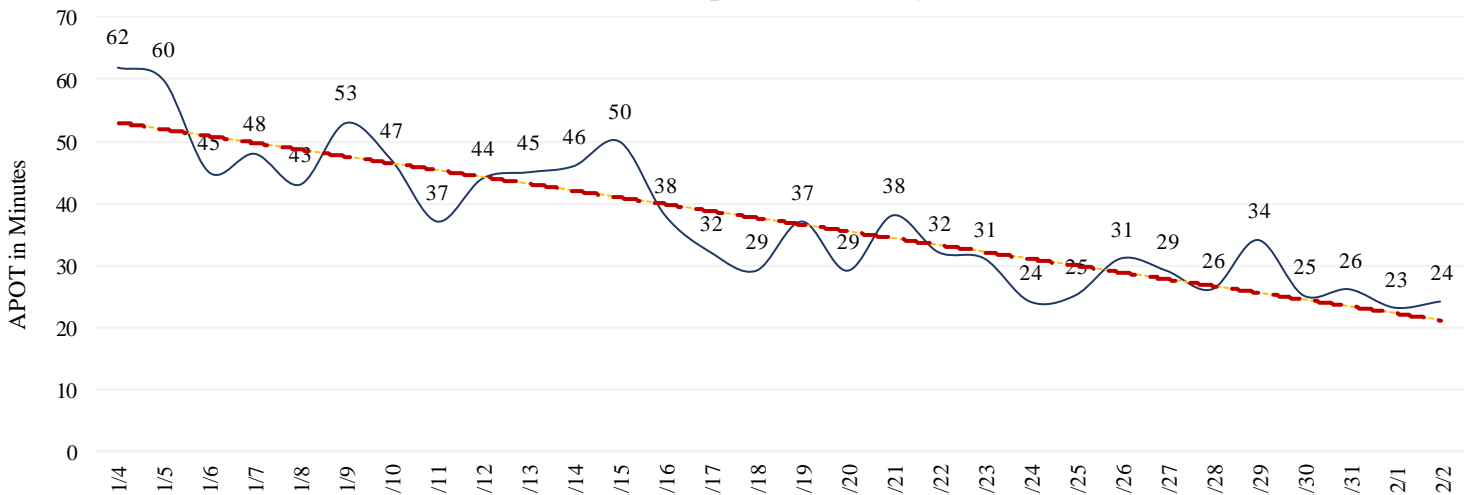
- Ambulance Patient Offload Time (APOT) is defined as the time the ambulance arrives at the receiving destination (wheels stop) to the time that the ambulance crew physically transfers the patient to the ED gurney. Last 24 hours: **Current Average APOT is: 14m43s / Current 90th Percentile APOT is: 29m00s**

The chart below displays a daily trend over the last 30 days.

- Seven (7) ERCs had APOT times greater than thirty (30) minutes.
- Five (5) ERCs had APOT times greater than sixty (60) minutes.

*Data Source: Orange County Medical Emergency Data System (OC-MEDS) – Updated 2/2/21

COVID 19 - APOT 90th percentile | Daily Trend

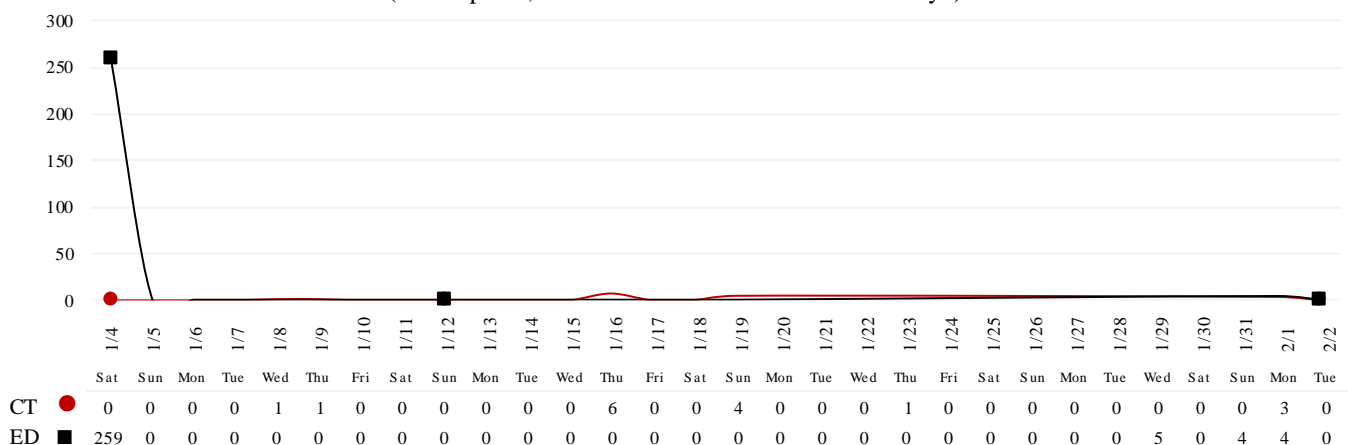


Note: a handful of ERCs were close to the 30 minute threshold, but were not over it.

- Emergency Department (ED) Diversion & Computerized Tomography (CT) (ED closed to all ambulance transport due to no ED capacity or no CT available) for the last 30 days.
- NOTE: Suspension of Hospital Diversion was reinstated, 1/4/21, @ 1900.**
- NOTE: Hospital Diversion was reinstated on 1/25/21 @ 1900.**

*Data Source: Orange County Medical Emergency Data System (OC-MEDS) – Updated 2/2/21

Hours of Diversion per 24-Hour Period (25 Hospitals, rounded to nearest hour - Last 30 Days)



2/3/21

26: Anaheim Regional, Anaheim Global, Chapman Global, CHOC, CHOC at Mission, Foothill, Fountain Valley, Garden Grove, Hoag-Irvine, Hoag-Newport Beach, Huntington Beach, Kaiser-Anaheim, Kaiser-Irvine, La Palma, Los Alamitos, Mission-Laguna Beach, Mission-Mission Viejo, Orange Coast Memorial, Orange County Global, Placentia Linda, Saddleback Memorial, Saint Jude, South Coast Global, St. Josephs, UCI, West Anaheim

*Data Source: California Department of Public Health (CDPH) – Snowflake server

Current Snowflake Data Dictionary may be found at:

https://www.calhospital.org/sites/main/files/file-attachments/data_dictionary_cha_covid_tracker_4-17-20.pdf

33 HOSPITALS

Date	Census All System	Occupancy % System	COVID+ Hospitalized System	COVID+ Hospitalized ICU Only (Adult & Peds)	% COVID+ hospitalized of ICU Occupied (Adult & Peds)	ICU Occupied (Adult & Peds)**	ICU Available (Adult & Peds)***	% ICU Available (Adult & Peds)****	ICU by Patient Age Group						% Ventilators Available
									Adult Occupied	Adult Available	Adult % Available	Pediatric Occupied	Pediatric Available	Pediatric % Available	
1/20	4281	78%	1935	517	88%	588	70	11%	560	36	6%	28	34	55%	35%
1/21	4262	78%	1896	516	88%	586	96	14%	557	63	10%	29	33	53%	35%
1/22	4257	78%	1818	482	79%	608	80	12%	578	48	8%	30	32	52%	36%
1/23	4161	77%	1732	467	83%	561	73	12%	531	48	8%	30	25	45%	35%
1/24	4115	77%	1703	447	84%	532	81	13%	509	49	9%	23	32	58%	38%
1/25	4100	76%	1677	437	79%	556	89	14%	532	58	10%	24	31	56%	38%
1/26	4098	76%	1639	448	80%	557	90	14%	535	57	10%	22	33	60%	39%
1/27	4198	76%	1592	439	76%	576	97	14%	548	70	11%	28	27	49%	41%
1/28	4044	74%	1521	426	83%	514	117	19%	495	81	14%	19	36	65%	43%
1/29	4052	75%	1442	394	75%	527	108	17%	501	79	14%	26	29	53%	47%
1/30	4095	75%	1412	392	70%	557	98	15%	528	72	12%	29	26	47%	48%
1/31	3961	73%	1362	384	70%	550	120	18%	529	77	13%	21	43	67%	49%
2/1	3887	73%	1330	370	71%	522	102	16%	501	68	12%	21	34	62%	50%
2/2	3946	74%	1298	363	70%	521	118	18%	500	84	14%	21	34	62%	51%

ICU occupied PREVIOUSLY ICU CDPH OC Occupied – CDPH combines occupied ICU adult beds and occupied ICU pediatric beds as a reporting metric on their COVID-19 Hospital dashboard. *ICU Available PREVIOUSLY ICU CDPH OC Available – CDPH subtracts the sum of occupied ICU adult beds and occupied ICU pediatric beds, from the sum of ICU total adult beds and ICU total pediatric beds to determine ICU available beds on their COVID-19 Hospital dashboard. ****% ICU AVAILABLE PREVIOUSLY % ICU CDPH OC Available – The sum of occupied ICU adult beds and occupied ICU pediatric beds, divided by the sum of ICU total adult beds and ICU total pediatric beds, as a percentage. *****COVID+ hospitalized of ICU Occupied PREVIOUSLY % ICU Beds System Available – All ICU beds reported as available in Orange County, which includes Adult, PICU, and NICU, and any other ICU bed types.

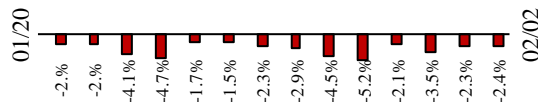
2/3/21

COVID 19 ORANGE COUNTY HOSPITAL SYSTEM DATA (CA SNOWFLAKE SERVER)

COVID+ CENSUS by BED TYPE | 02/02/2021

▲ ICU	363	-7	-1.9%	▼
◆ ED OVERFLOW	47	+14	42.4%	▲
X NON-ICU	935	-25	-2.6%	▼
● SYSTEM	1298	-32	-2.4%	▼
3 Day 01-30-21	1412	-114	-8.1%	
7 Day 01-26-21	1639	-341	-20.8%	

14 Day System COVID+ Change



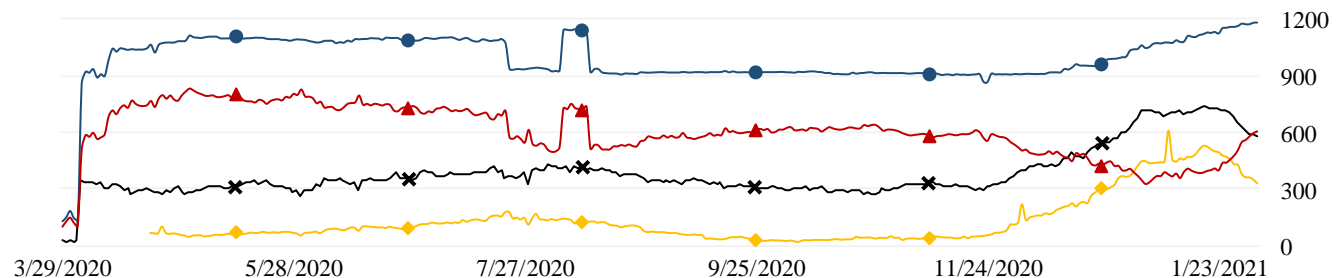
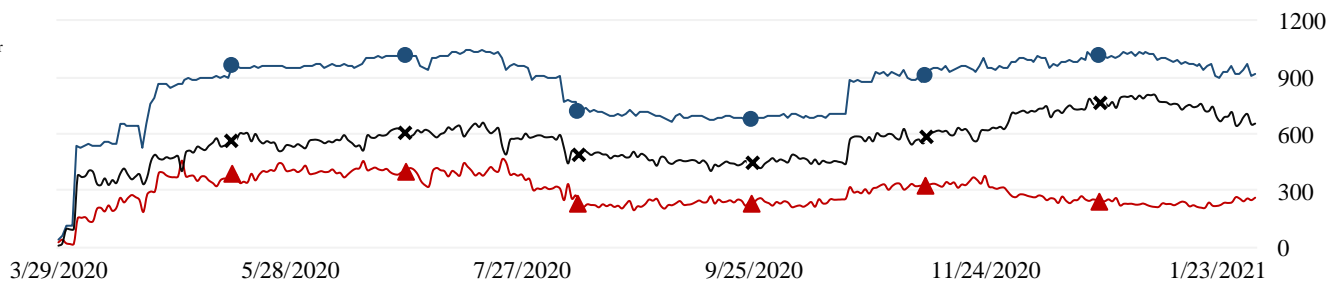
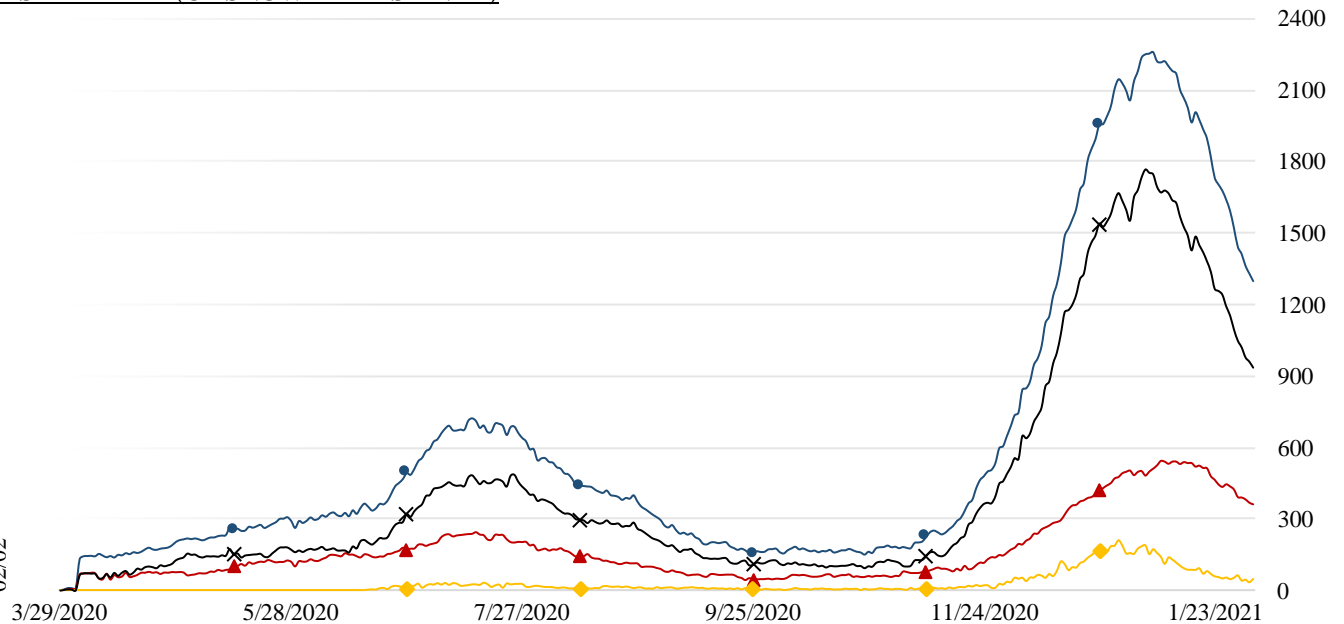
ICU SYSTEM CENSUS | (02/02/21)

*includes adult, PICU, NICU & other

● SYSTEM - 919
▲ AVAILABLE- 260 (28.3%)
X OCCUPIED- 659 (71.7%)

VENTILATORS | (02/02/21)

● SYSTEM - 1179
▲ AVAILABLE- 603 (51.1%)
X OCCUPIED- 576 (48.9%)
◆ COVID- 333 (57.8%)



2/3/21

COVID 19 ORANGE COUNTY HOSPITAL SYSTEM DATA (CA SNOWFLAKE SERVER)

7 DAY HISTORY BED OCCUPANCY | 02/02/2021

● SYSTEM BEDS (INCLUDES SURGE)- 7136

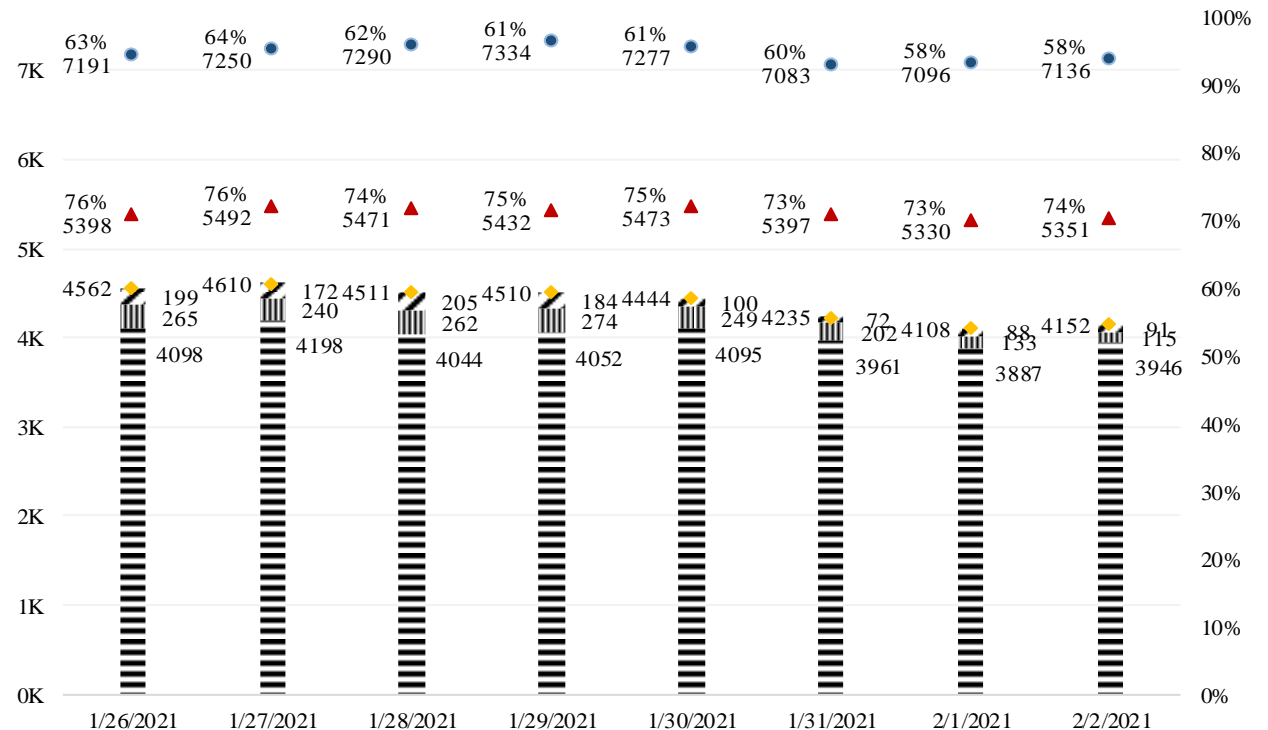
◆ INPATIENT INCLUDING SURGE- 4152 (58.2%)

||| SURGE NON ICU INPATIENT- 115

▨ SURGE ICU INPATIENT- 91

▲ NON SURGE INPATIENT BEDS- 5351

≡ NON SURGE INPATIENT- 3946 (73.7%)



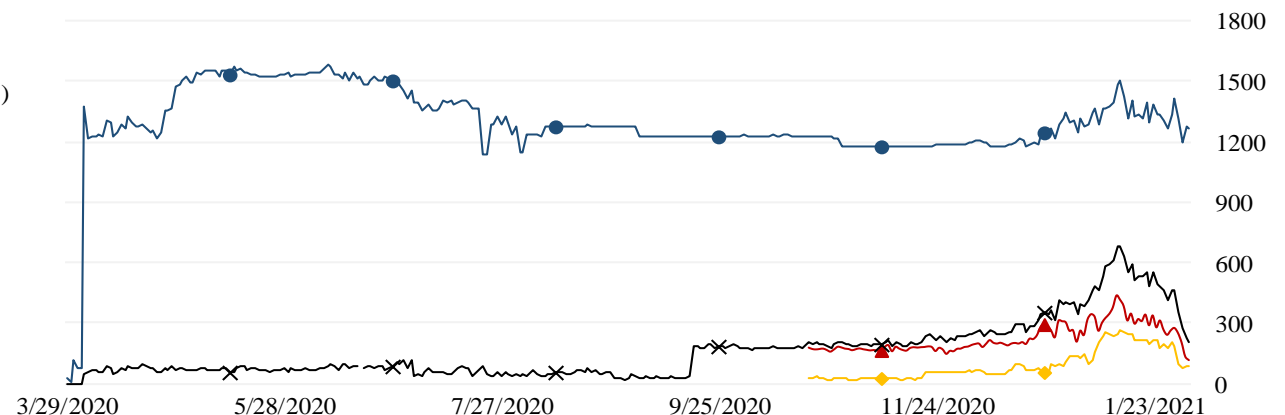
SURGE CENSUS | 02/02/2021

● SURGE BED SYSTEM- 1269 (ICU- 198 | NON ICU- 1071)

✕ SURGE BED PATIENTS SYSTEM- 206 (16.2%)

▲ SURGE BED NON ICU PATIENTS- 115 (10.7%)

◆ SURGE BED ICU PATIENTS- 91 (46.0%)



2/3/21

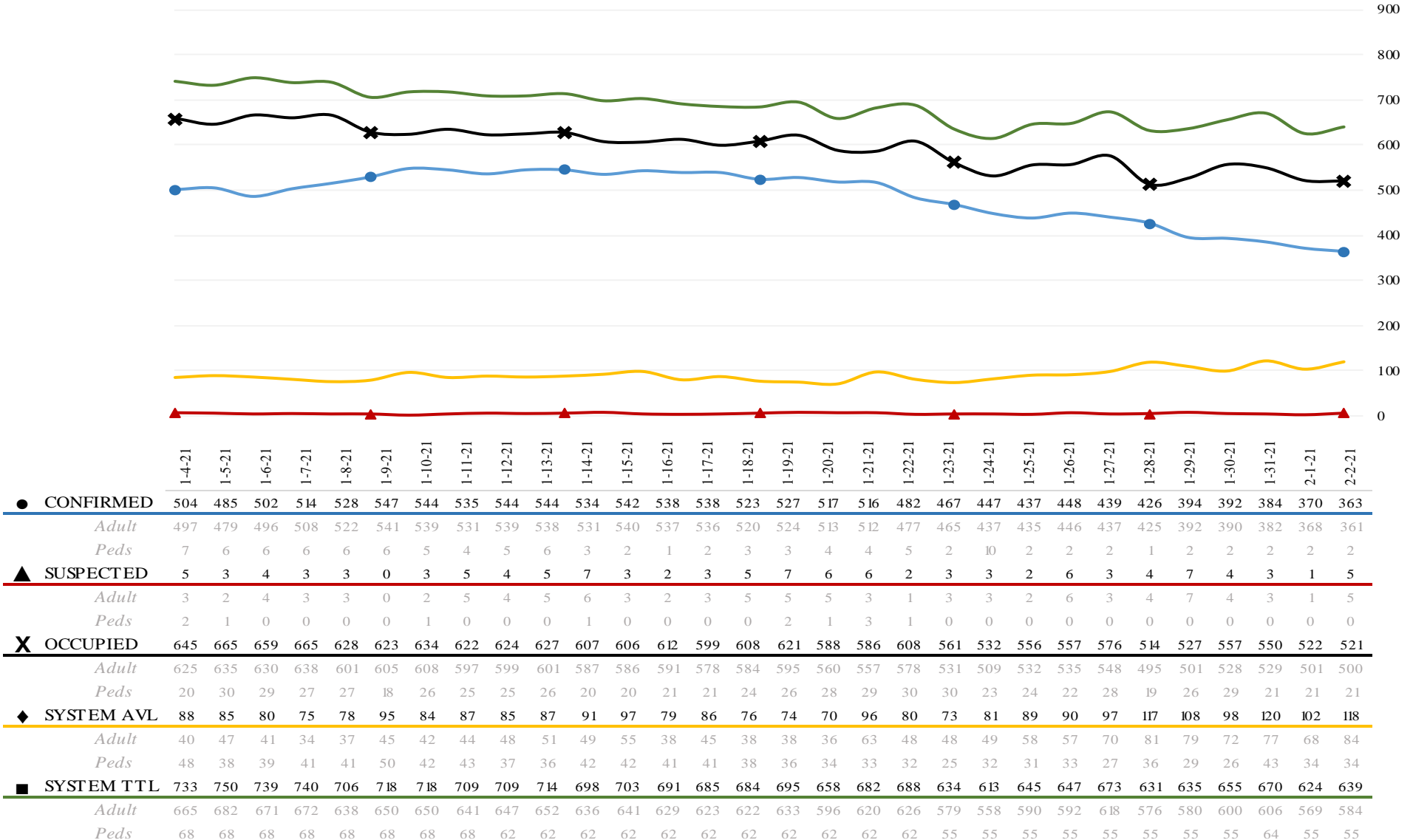
COVID 19 ORANGE COUNTY HOSPITAL SYSTEM DATA (CA SNOWFLAKE SERVER)

NON SURGE ICU BEDS: ADULT & PEDS COMBINED (01/04/21 - 02/02/21) | 33 ACUTE CARE FACILITIES REPORTING

ICU INSIGHTS

01-04-21 thru 02-02-21:

- Confirmed COVID+ in ICU decreased by -
- ▲ Confirmed suspect in ICU had no change at 0.0%.
- ✕ Occupied ICU decreased by -19.2%.
- ◆ Available ICU increased by 34.1%.
- System ICU decreased by -12.8%.



2/3/21

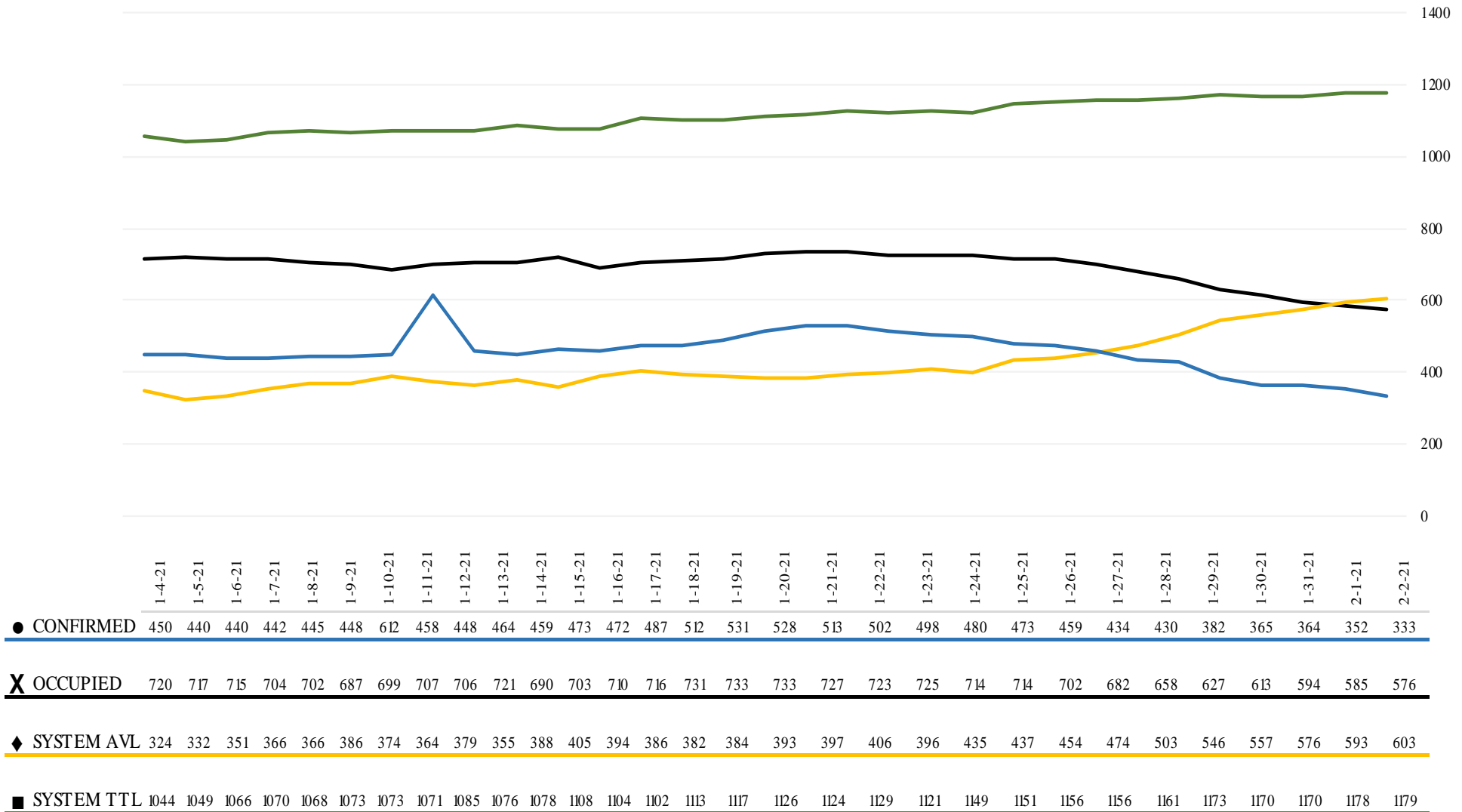
COVID 19 ORANGE COUNTY HOSPITAL SYSTEM DATA (CA SNOWFLAKE SERVER)

VENTILATORS (01/04/21 - 02/02/21) | 33 ACUTE CARE FACILITIES REPORTING

VENTILATOR INSIGHTS

01-04-21 thru 02-02-21:

- Confirmed COVID+ patients on ventilators decreased by -26.0%.
- X Occupied ventilators decreased by -20.0%.
- ◆ System available ventilators increased by 86.1%.
- Total system ventilators increased by 12.9%.



*Data Source: California Department of Public Health (CDPH) – Snowflake server

**Current Snowflake Data Dictionary may be found at:

https://www.calhospital.org/sites/main/files/file-attachments/data_dictionary_cha_covid_tracker_4-17-20.pdf

Acute Care Hospital PPE / Ventilator Supplies Days on Hand – (30/33 ACHs reported)

Reporting Date: 2/2/21 *	30 days +	15-30 days	7-14 days	4-6 days	0-3 days	Not Reported
Ventilator Supplies**	8	6	14	2	0	3
N95 Masks**	19	10	0	0	0	4
Surgical Masks**	21	7	1	0	0	4
Face Shields**	19	3	3	4	0	4
Gloves**	14	3	9	2	1	4
Gowns**	14	7	5	0	3	4

Hospital Criteria for shifting to Crisis Care Strategies

LEGEND

CRITERIA	STATUS		
	Normal Operations	Modified Operations	Modified Operations Assistance Needed
Rate of change in Hospitalized COVID-19 patients (doubling time over last 7 days)	Never to 4 weeks to double	4 weeks to 2 weeks to double	Less than 2 weeks to double
Absolute COVID-19 Census in the hospitals across Orange County	Less than 750	750-1500	>1500
Hospital census as a percentage of staffed capacity	<80%	80% to 90%	>90%
Hospital ICU census as a percentage of staffed ICU capacity	<70%	70% to 85%	>85%

Hospital Criteria for shifting to Crisis Care Strategies

2/2/21

CRITERIA	STATUS		
	Normal Operations	Modified Operations Under Control	Modified Operations Assistance Needed
Rate of change in Hospitalized COVID-19 patients (doubling time over last 7 days)	Declining		
Absolute COVID-19 Census in the hospitals across Orange County		1298	
Hospital census as a percentage of staffed capacity	74%		
Hospital ICU census as a percentage of staffed ICU capacity		81.5%	

AGENCY OPERATIONS CENTER / LOGISTICS SECTION

- The AOC is activated on **Wednesdays from 0900-1600 at Level II**; Warehouse Ops are M-F - 0900-1600.
- SCARCE Resources: Gloves, Syringes, Needles

Total Activity – Updated 1/28/21 at 1530

INQUIRIES	RR RECEIVED	RR FILLED
17,887 +50	10,491 +28	8,502 +26
Total Denied Requests: 864 / Total Redacted Requests: 914		

Inventory Report 02/18/20 to 02/02/21

Logistics Daily Units Distributed 1/28/21

N95 Mask	0
Surgical Mask	0
Gown	0
Gloves	19,400
Face Shields/Eye Protection	0
Hand Sanitizer	0
Other	57,710
Total Units	77,110

Medical Supply/Equipment Total Units Distributed

N95 Mask	5,100,175
Surgical Mask	2,018,805
Gowns	2,791,516
PPE-Suit	17,965
Gloves	6,187,050
Eye Protection	413,009
Hand Sanitizer	313,423
Other Items	2,550,759
Total Units	19,392,702

Resource Requests - Updated 1/28/21 at 1530

Received ■ Filled ●

