

**OVERVIEW OF CURRENT SITUATION (8/24/21 0721)** Source: Johns Hopkins University & Medicine <https://coronavirus.jhu.edu/map.html>

Cases / Deaths  
 Worldwide: 212,770,406 / 4,445,854  
 Nationwide: 37,944,377 / 629,581  
 California: 4,251,704 / 65,170  
 Orange Co: 281,609 / 5,184 Source: [Orange County COVID-19 Case Counts & Testing Figures](#)

**ORANGE COUNTY PUBLIC HEALTH (as of 8/24/21 0930)**

[Orange County COVID-19 Summary\\* click for full details](#)

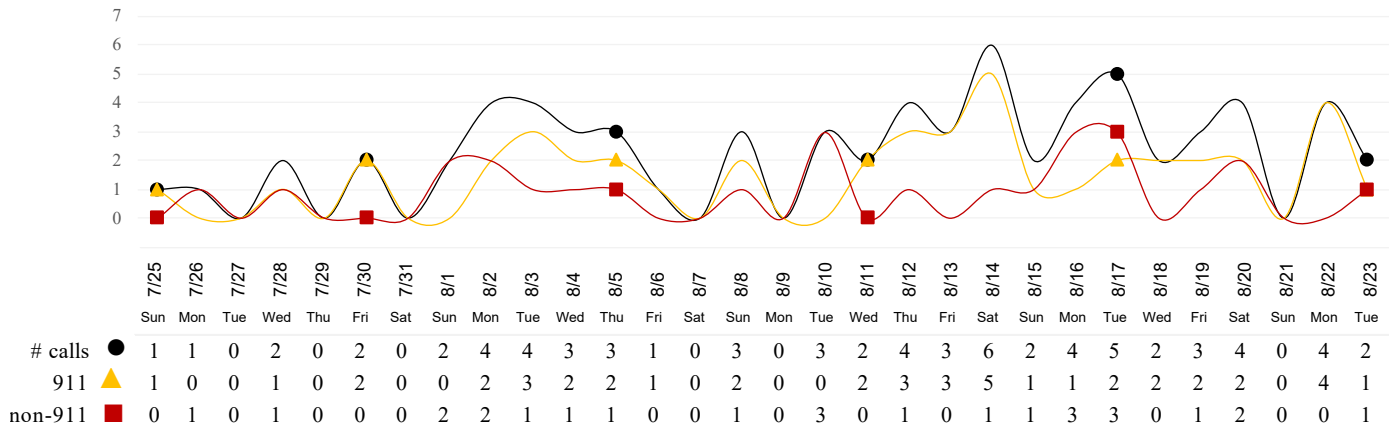
	Wed 8/18/21	Thu 8/19/21	Fri 8/20/21	Sat 8/21/21	Sun 8/22/21	Mon 8/23/21	Tue 8/24/21
Cases Reported to Date	277,845	278,417	279,237	X**	X**	281,092	281,609
Deaths Reported to Date	5,165	5,169	5,176	X**	X**	5,178	5,184
Tests Reported Today	11,213	12,644	12,458	X**	X**	31,050	9,941
Cumulative Tests to Date	4,522,326	4,534,970	4,547,528	X**	X**	4,578,478	4,588,419

\*Data posted is always preliminary & subject to change. More information may become available as individual case investigations are completed. **LOCAL DATA MAY BE DIFFERENT FROM THE STATE WEBSITE DATA.** \*\* Weekend values reported on Monday.

**SKILLED NURSING/ASSISTED LIVING/RESIDENTIAL CARE FACILITY – TRENDS**

\*Data Source: Orange County Medical Emergency Data System (OC-MEDS) – Updated 8/23/21

**Calls to SNFs/Congregate Living with Primary Impressions: Fever/Cough, Influenza-like Illnesses**  
(Transports to ERCs Only - Last 30 Days)



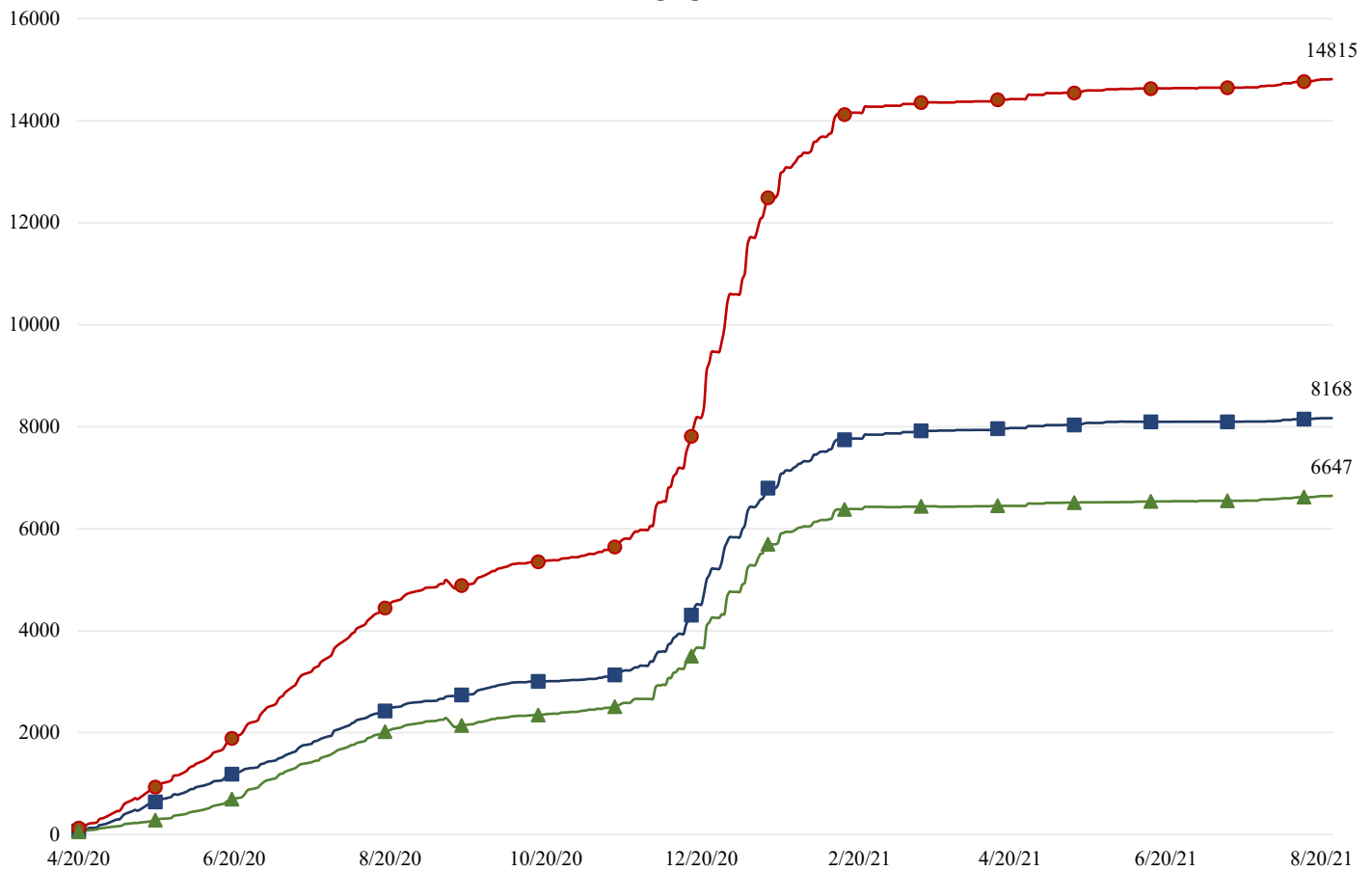
\*Data Source: California Department of Public Health (CDPH)

**Skilled Nursing/Assisted Living/Residential Care Facility PPE / Ventilator Supplies Days on Hand (65/73 SNFs reported)**

Reporting Date: 8/23/2021	0 - 3 days	4 - 7 days	8-14 days	15+ days
N95 Masks	0	2	6	57
Surgical Masks	0	1	6	58
Eye Protection	0	2	5	58
Gowns	0	2	4	59
Gloves	0	1	7	57
Alcohol-Based Hand Sanitizer	0	2	6	57

\*Data Source: Orange County Health Care Agency – Public Health – 8/24/21

COVID+ in Congregate Healthcare\*



\*\*NOTE\*\*: Decrease in the COVID + in staff seen on graph is due to data being cleaned and removing duplicates of those that work in multiple OC facilities or are contract staff and care for residents at multiple facilities.

Resident COVID+ ■ Staff COVID+ ▲ Total ●

\*Data Source: Orange County Health Care Agency – Public Health

Current Facility Outbreaks (as of 8/24/21 0930)

An "Outbreak" is two (2) or more confirmed cases of COVID-19 in facility occurring within 14 days.

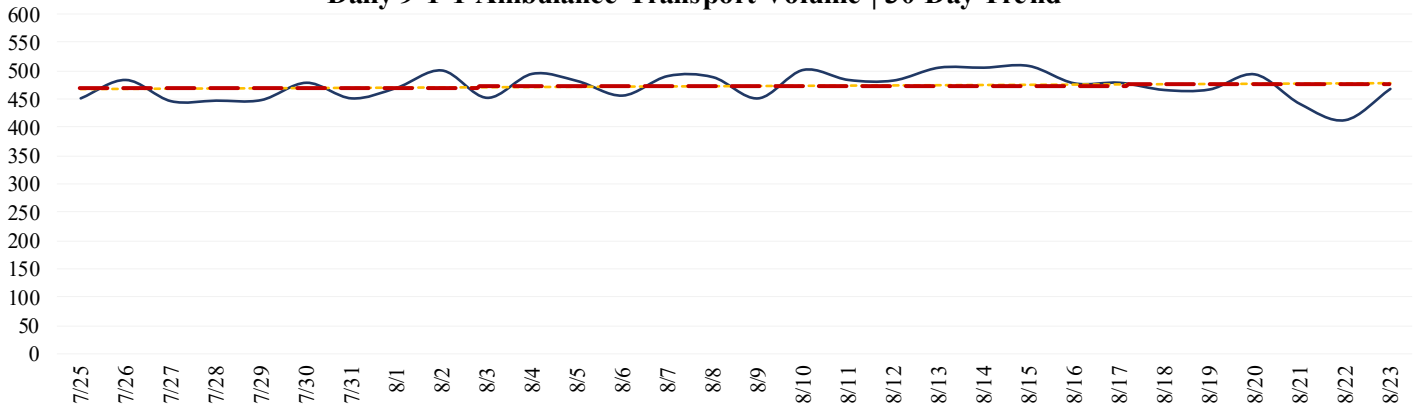
Facility Type by Licensing Category, Count	Facility Name Alphabetical
Skilled Nursing Facility 3	Buena Park Nursing Center, Freedom Village Healthcare Center, Huntington Valley Healthcare Center
Elderly Assisted Living 5	Casa Doctora Iii, Del Obispo Terrace Senior Living, Newport Bay, San Clemente Villas By The Sea, Sunrise Of Seal Beach

**EMERGENCY MEDICAL SERVICES STATUS**

\*Data Source: Orange County Medical Emergency Data System (OC-MEDS)

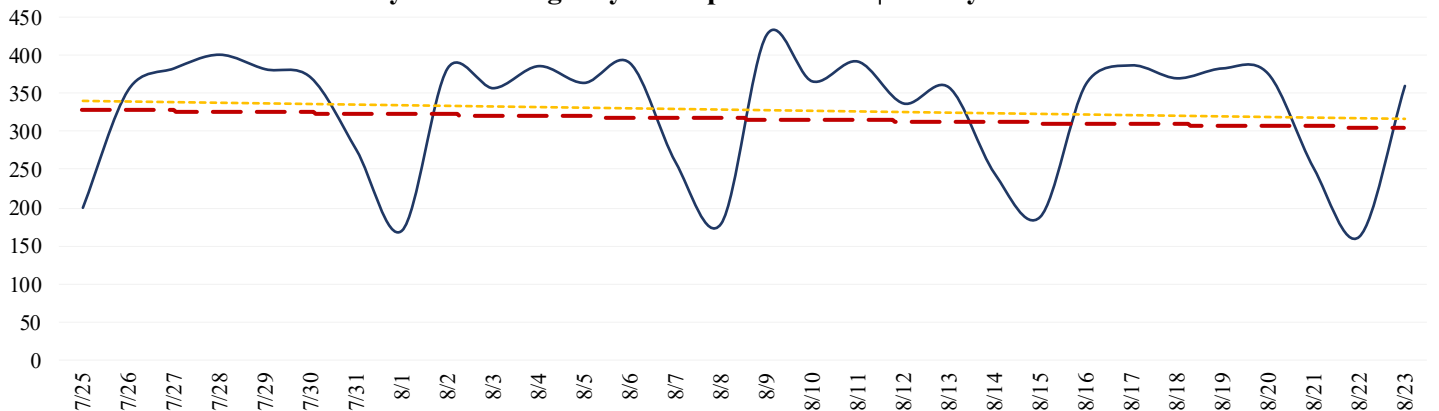
9-1-1 Ambulance Transports appear to have plateaued and are **now at normal (pre-pandemic) levels** (Updated 8/23/21).

**Daily 9-1-1 Ambulance Transport Volume | 30 Day Trend**



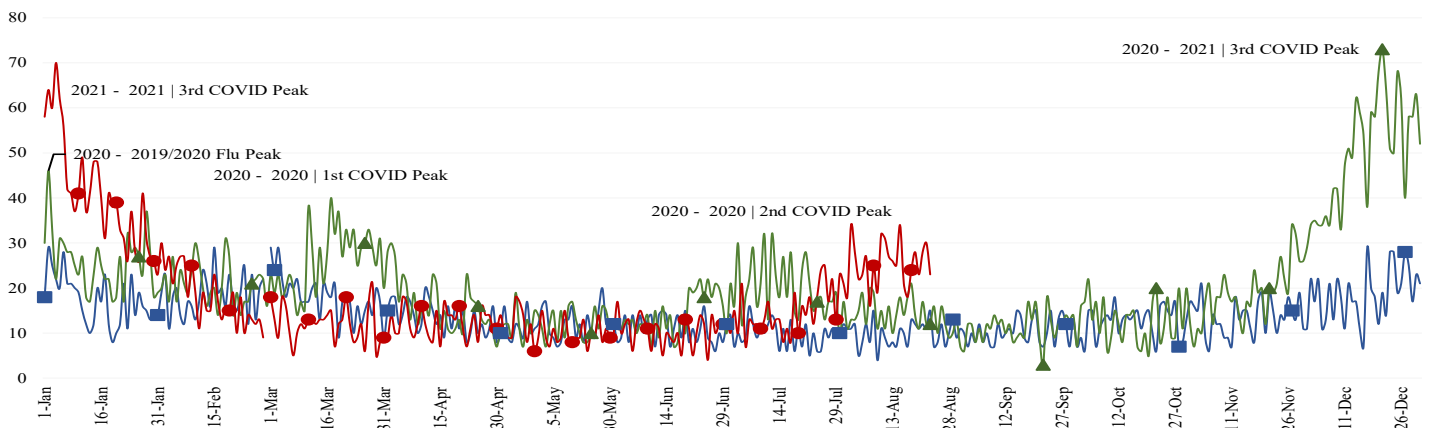
Non-emergency Ambulance Transports appear **to be trending lower** (Updated 8/23/21).

**Daily Non-Emergency Transport Volume | 30 Day Trend**



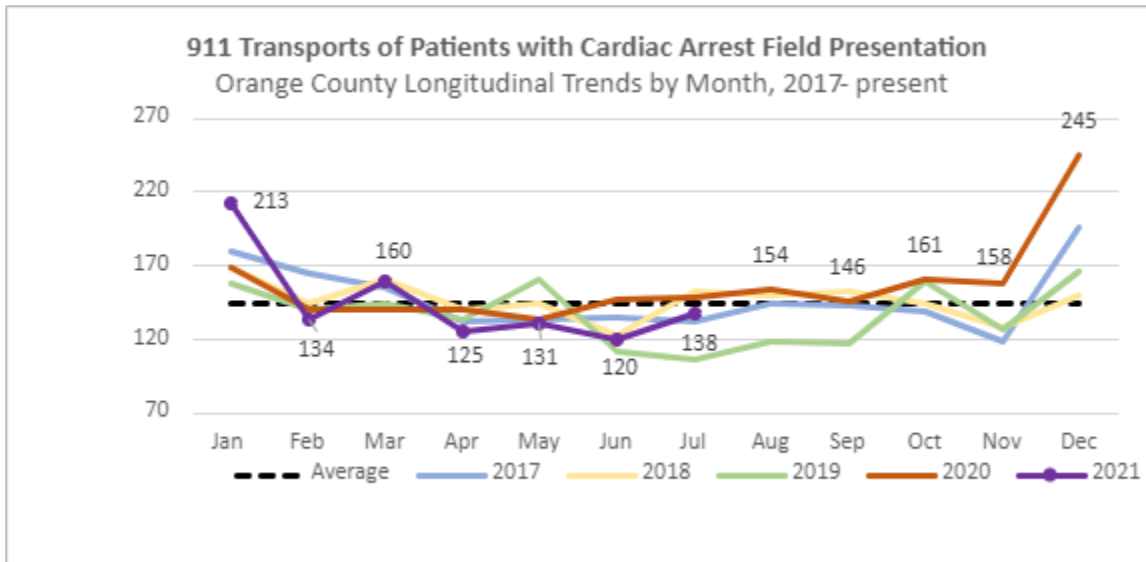
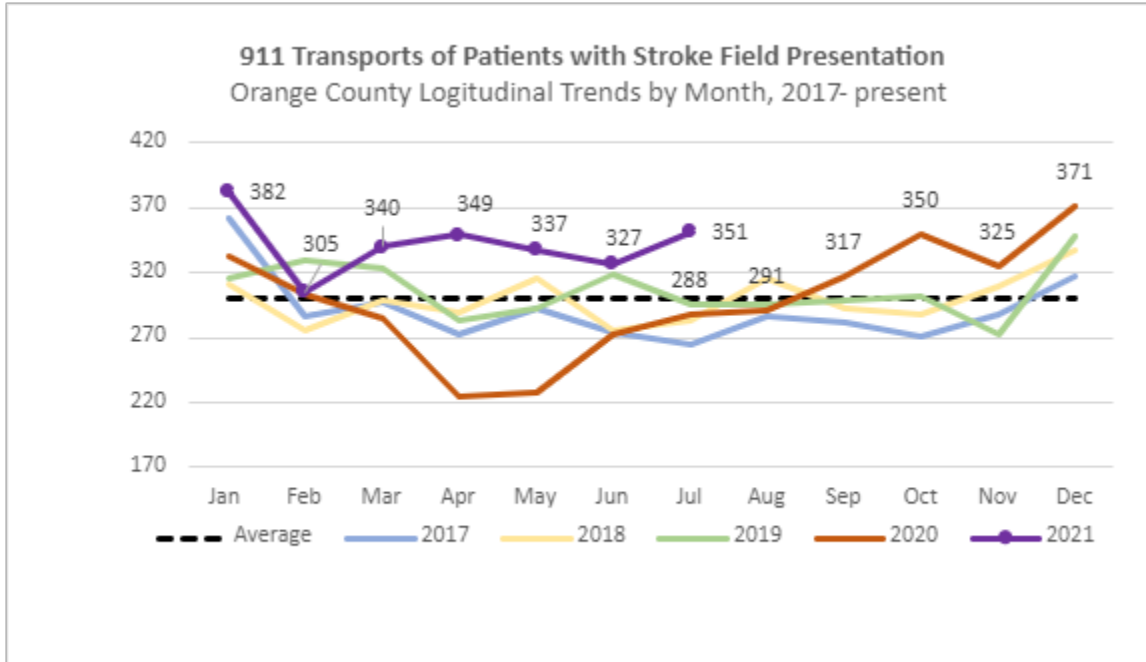
9-1-1 Transports of patients with Cold/Flu/ILI/COVID primary impressions **declined from a peak reached last week, but are still much higher than normal.** (Updated 8/23/21).

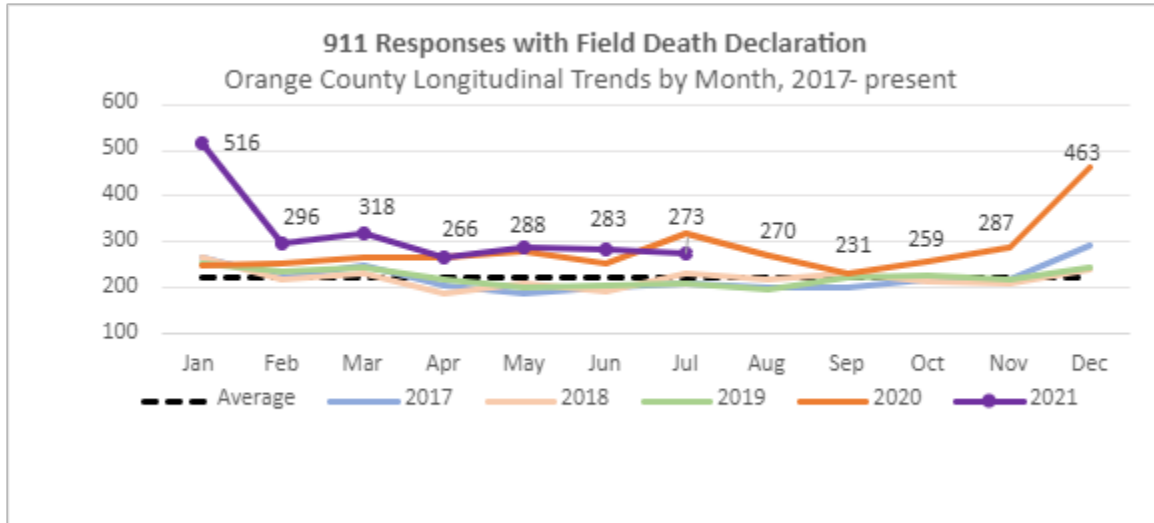
**EMS Provider Impressions - Cold/Flu/ILI/COVID-19 Year Over Year Comparison (2019 ■, 2020 ▲, & 2021 ●)**



**911 EMS SYSTEM MONITORING**

\*Data Source: Orange County Medical Emergency Data System (OC-MEDS)





**Summary Data Table for Chart, “911 Responses with Field Death Declaration”**

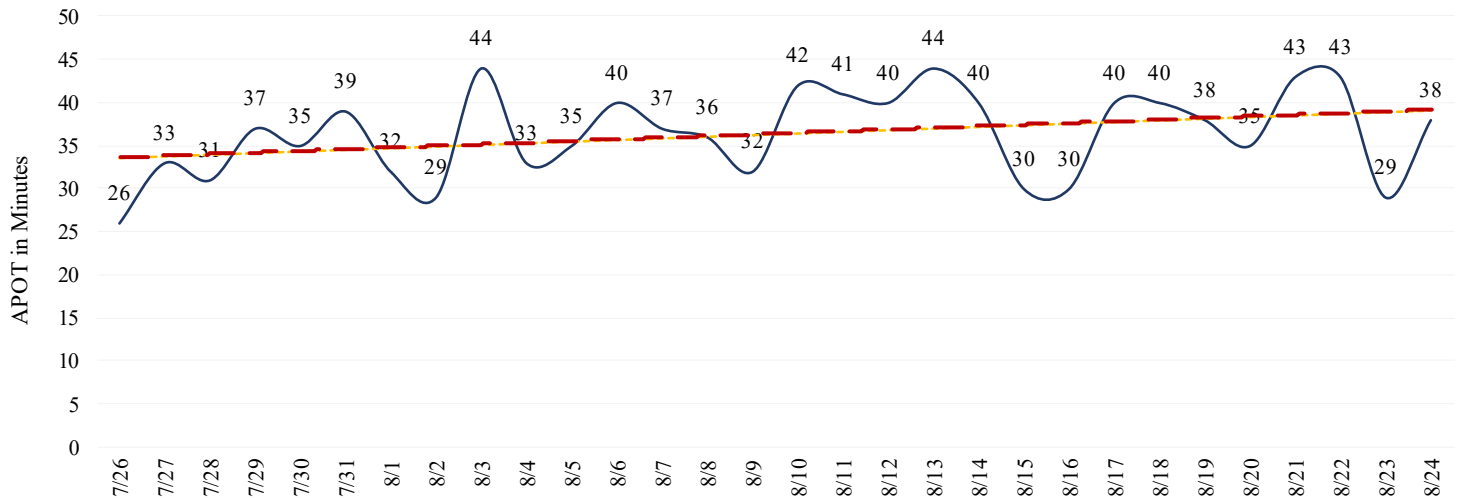
	2017	2018	2019	2020	2021
January	268	267	254	250	516
February	224	216	235	254	296
March	248	233	245	265	318
April	206	186	220	265	266
May	186	210	202	281	288
June	201	190	205	254	283
July	211	233	208	320	273
August	201	218	195	270	
September	199	233	222	231	
October	217	213	227	259	
November	217	211	217	287	
December	294	242	246	463	
<b>Total</b>	<b>2378</b>	<b>2410</b>	<b>2430</b>	<b>3399</b>	

- Ambulance Patient Offload Time (APOT) is defined as the time the ambulance arrives at the receiving destination (wheels stop) to the time that the ambulance crew physically transfers the patient to the ED gurney. Last 24 hours: **Countywide - 38m00s since the report creation time (08/24/21 @ 0732). Countywide APOT times continue at levels that are much higher than normal, but have flattened out.**
- Twelve (12) ERCs had APOT times greater than thirty (30) minutes.
- Two (2) ERCs had APOT times greater than sixty (60) minutes.

The chart below displays a daily trend over the last 30 days.

\*Data Source: Orange County Medical Emergency Data System (OC-MEDS) – Updated 8/24/21

COVID 19 - APOT 90th percentile | Daily Trend

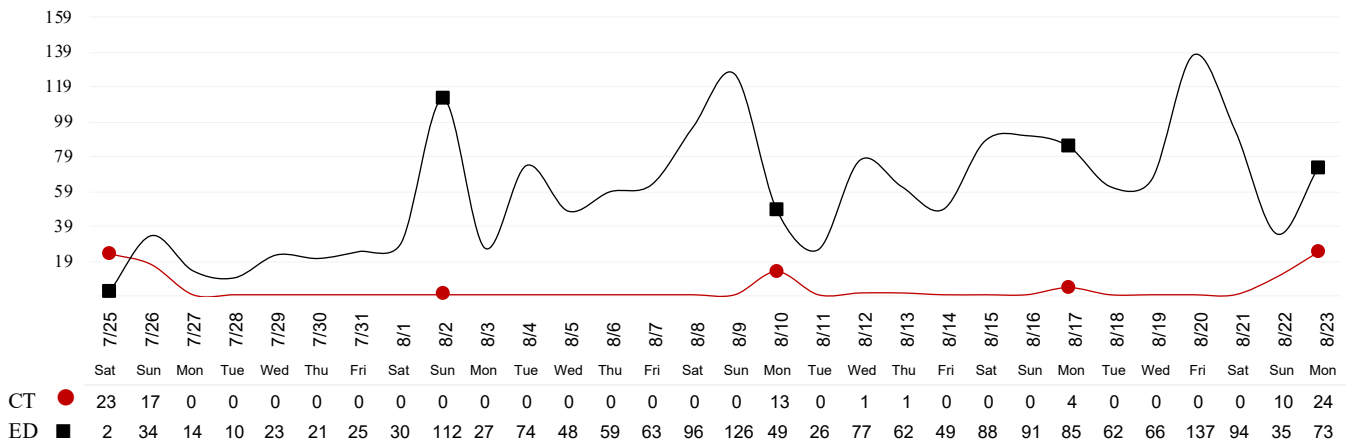


Note: a handful of ERCs were close to the 30 minute threshold, but were not over it.

- Emergency Department (ED) Diversion & Computerized Tomography (CT) (ED closed to all ambulance transport due to no ED capacity or no CT available) for the last 30 days.
- **NOTE: Suspension of Hospital Diversion was reinstated, 1/4/21, @ 1900.**
- **NOTE: Hospital Diversion was reinstated on 1/25/21 @ 1900.**

\*Data Source: Orange County Medical Emergency Data System (OC-MEDS) – Updated 8/23/21

Hours of Diversion per 24-Hour Period  
 (25 Hospitals, rounded to nearest hour - Last 30 Days)



08/24/21

**26):** Anaheim Regional, Anaheim Global, Chapman Global, CHOC, CHOC at Mission, Foothill, Fountain Valley, Garden Grove, Hoag-Irvine, Hoag-Newport Beach, Huntington Beach, Kaiser-Anaheim, Kaiser-Irvine, La Palma, Los Alamitos, Mission –Laguna Beach, Mission-Mission Viejo, Orange Coast Memorial, Orange County Global, Placentia Linda, Saddleback Memorial, Saint Jude, South Coast Global, St. Josephs, UCI, West Anaheim

\*Data Source: California Department of Public Health (CDPH) – Snowflake server

Current Snowflake Data Dictionary may be found at:

[https://www.calhospital.org/sites/main/files/file-attachments/data\\_dictionary\\_cha\\_covid\\_tracker\\_4-17-20.pdf](https://www.calhospital.org/sites/main/files/file-attachments/data_dictionary_cha_covid_tracker_4-17-20.pdf)

**33 HOSPITALS**

Date	Census All System	Occupancy % System	COVID+ Hospitalized System	COVID+ Hospitalized ICU Only (Adult & Peds)	% COVID+ hospitalized of ICU Occupied (Adult & Peds)	ICU Occupied (Adult & Peds)**	ICU Available (Adult & Peds)***	% ICU Available (Adult & Peds)****	ICU by Patient Age Group						% Ventilators Available
									Adult Occupied	Adult Available	Adult % Available	Pediatric Occupied	Pediatric Available	Pediatric % Available	
8/10	3876	73%	495	96	22%	433	154	26%	412	114	22%	21	40	66%	70%
8/11	3919	73%	497	126	27%	471	149	24%	446	113	20%	25	36	59%	71%
8/12	3911	72%	498	120	27%	452	160	26%	426	125	23%	26	35	57%	70%
8/13	3948	73%	505	127	28%	451	159	26%	425	124	23%	26	35	57%	69%
8/14	3910	72%	528	127	28%	457	145	24%	430	111	21%	27	34	56%	69%
8/15	3880	72%	538	124	27%	453	153	25%	429	116	21%	24	37	61%	71%
8/16	3776	70%	549	126	27%	460	158	26%	432	125	22%	28	33	54%	70%
8/17	3934	72%	568	125	27%	471	160	25%	441	129	23%	30	31	51%	69%
8/18	4013	73%	571	133	28%	476	154	24%	443	126	22%	33	28	46%	68%
8/19	4054	73%	571	137	29%	474	156	25%	444	125	22%	30	31	51%	69%
8/20	4028	73%	574	136	29%	464	150	24%	431	122	22%	33	28	46%	69%
8/21	3997	72%	560	121	26%	458	156	25%	430	123	22%	28	33	54%	69%
8/22	3915	71%	570	116	26%	453	147	25%	428	111	21%	25	36	59%	70%
8/23	3843	70%	564	132	29%	449	167	27%	423	132	24%	26	35	57%	70%

\*\*ICU occupied PREVIOUSLY ICU CDPH OC Occupied – CDPH combines occupied ICU adult beds and occupied ICU pediatric beds as a reporting metric on their COVID-19 Hospital dashboard. \*\*\*ICU Available PREVIOUSLY ICU CDPH OC Available – CDPH subtracts the sum of occupied ICU adult beds and occupied ICU pediatric beds, from the sum of ICU total adult beds and ICU total pediatric beds to determine ICU available beds on their COVID-19 Hospital dashboard. \*\*\*\*%ICU AVAILABLE PREVIOUSLY % ICU CDPH OC Available – The sum of occupied ICU adult beds and occupied ICU pediatric beds, divided by the sum of ICU total adult beds and ICU total pediatric beds, as a percentage. \*\*\*\*\*%COVID+ hospitalized of ICU Occupied PREVIOUSLY % ICU Beds System Available – All ICU beds reported as available in Orange County, which includes Adult, PICU, and NICU, and any other ICU bed types.

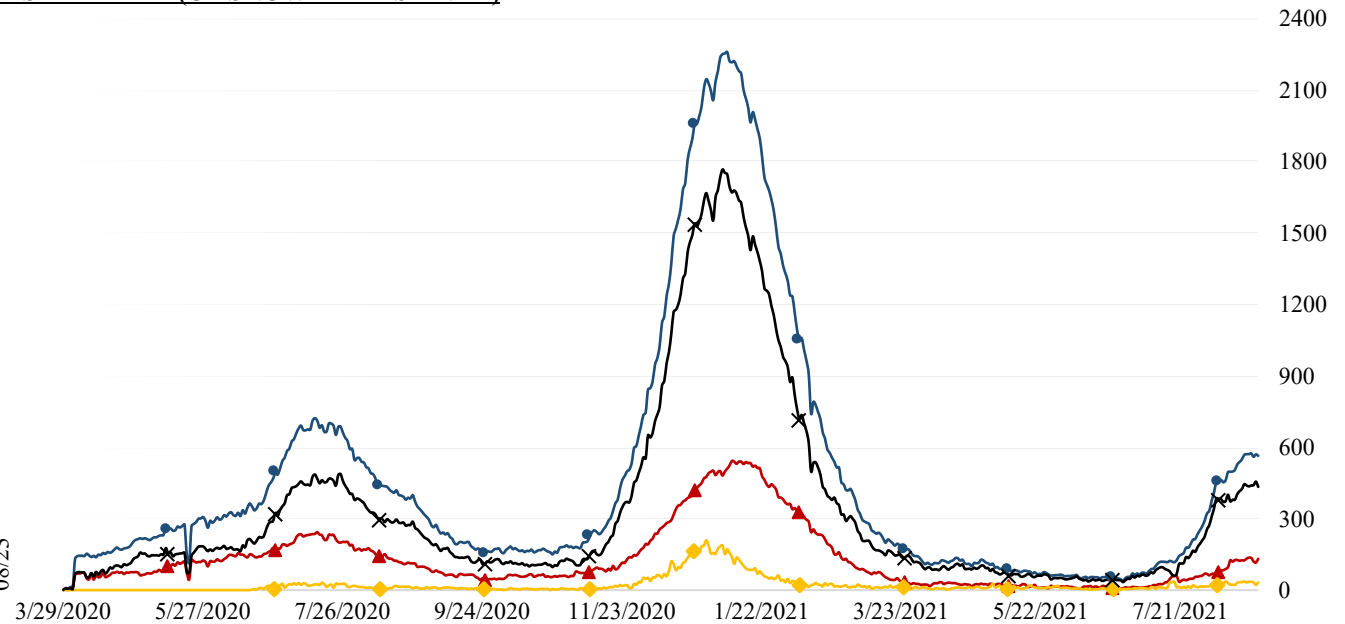
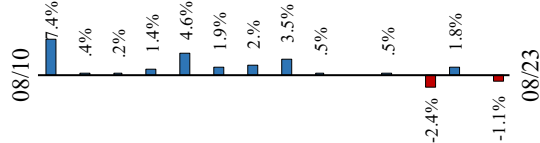
08/24/21

**COVID 19 ORANGE COUNTY HOSPITAL SYSTEM DATA (CA SNOWFLAKE SERVER)**

**COVID+ CENSUS by BED TYPE | 08/23/2021**

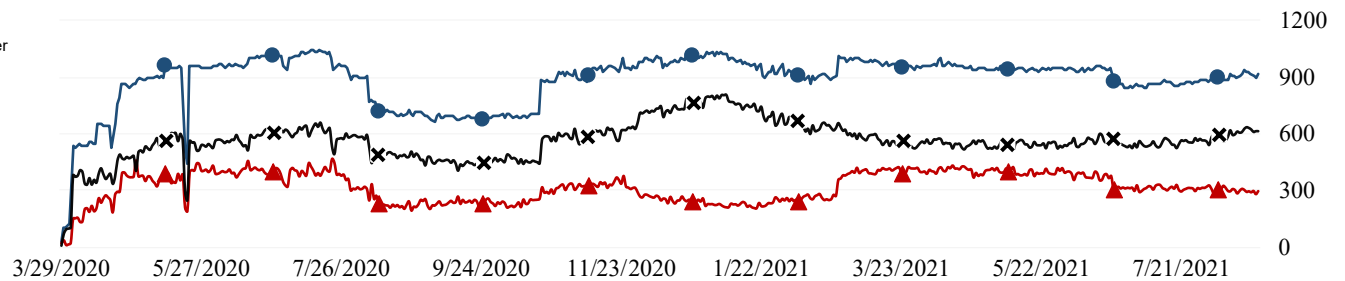
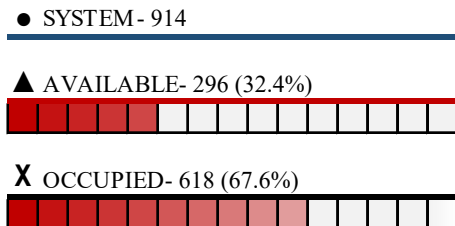
▲ ICU	132	+16	13.8%	▲
◆ ED OVERFLOW	32	+10	45.5%	▲
X NON-ICU	432	-22	-4.8%	▼
● SYSTEM	564	-6	-1.1%	▼
3 Day   08-20-21	574	-10	-1.7%	
7 Day   08-16-21	549	+15	2.7%	

**14 Day System COVID+ Change**

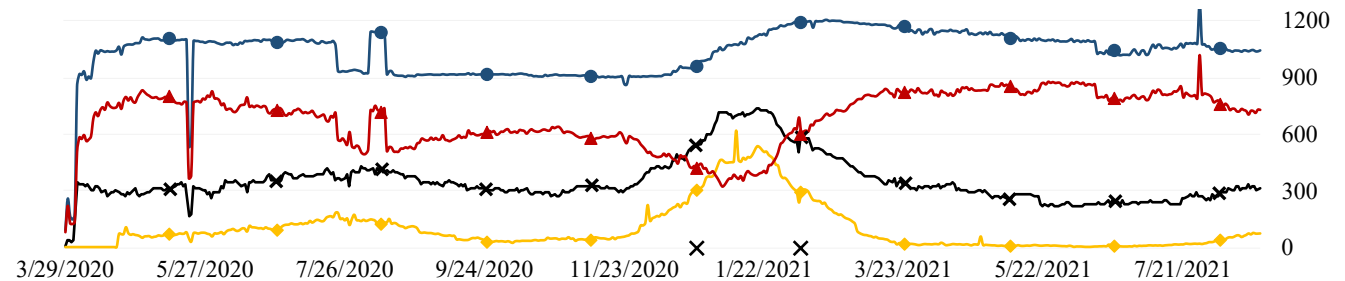
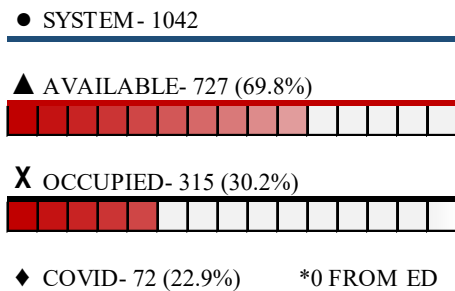


**ICU SYSTEM CENSUS | (08/23/21)**

\*includes adult, PICU, NICU & other



**VENTILATORS | (08/23/21)**





08/24/21

**COVID 19 ORANGE COUNTY HOSPITAL SYSTEM DATA (CA SNOWFLAKE SERVER)**

**7 DAY HISTORY BED OCCUPANCY | 08/23/2021**

● SYSTEM BEDS (INCLUDES SURGE)- 6982

◆ INPATIENT INCLUDING SURGE- 3877 (55.5%)

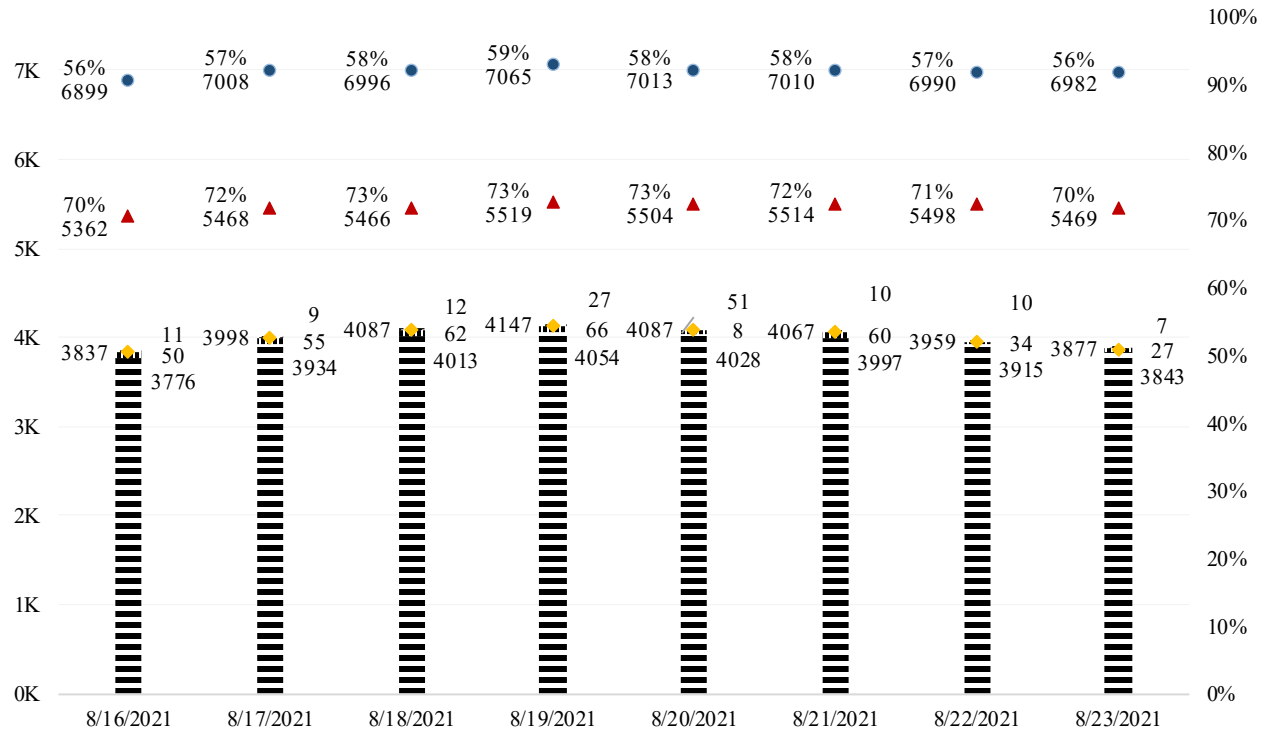


▤ SURGE NON ICU INPATIENT- 27

▨ SURGE ICU INPATIENT- 7

▲ NON SURGE INPATIENT BEDS- 5469

▤ NON SURGE INPATIENT- 3843 (70.3%)



**SURGE CENSUS | 08/23/2021**

● SURGE BED SYSTEM- 962 (ICU- 89 | NON ICU- 873)

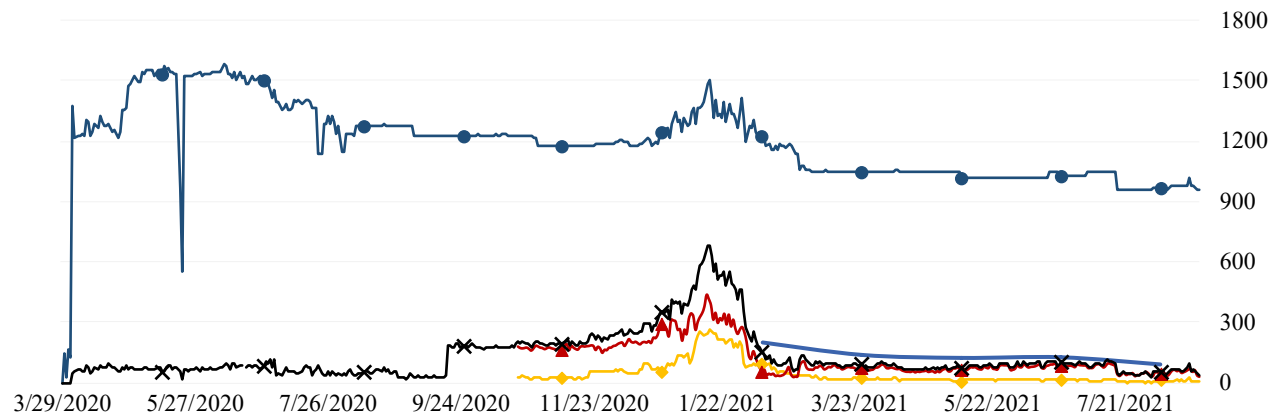
X SURGE BED PATIENTS SYSTEM- 34 (3.5%)



▲ SURGE BED NON ICU PATIENTS- 27 (3.1%)



◆ SURGE BED ICU PATIENTS- 7 (7.9%)



08/24/21

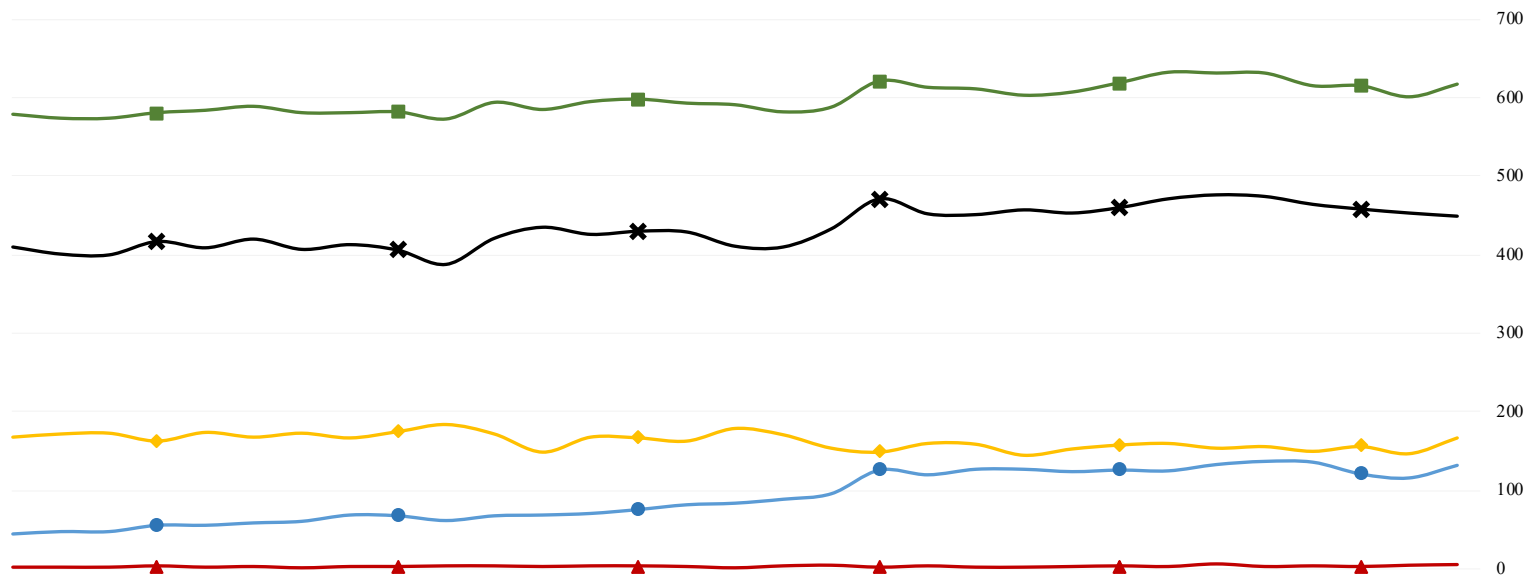
**COVID 19 ORANGE COUNTY HOSPITAL SYSTEM DATA (CA SNOWFLAKE SERVER)**

**NON SURGE ICU BEDS: ADULT & PEDIATRIC COMBINED (07/25/21 - 08/23/21) | 33 ACUTE CARE FACILITIES REPORTING**

**ICU INSIGHTS**

07-25-21 thru 08-23-21:

- Confirmed COVID+ in ICU increased by 175.0%
- ▲ Confirmed suspect in ICU increased by 400.0%
- ✕ Occupied ICU increased by 12.0%
- ◆ Available ICU decreased by -2.9%
- System ICU increased by 7.5%



	7-25-21	7-26-21	7-27-21	7-28-21	7-29-21	7-30-21	7-31-21	8-1-21	8-2-21	8-3-21	8-4-21	8-5-21	8-6-21	8-7-21	8-8-21	8-9-21	8-10-21	8-11-21	8-12-21	8-13-21	8-14-21	8-15-21	8-16-21	8-17-21	8-18-21	8-19-21	8-20-21	8-21-21	8-22-21	8-23-21	
<b>● CONFIRMED</b>	48	48	56	56	59	61	69	68	62	68	69	71	76	82	84	89	96	126	120	127	127	124	126	125	133	137	136	121	116	132	
Adult	47	48	56	56	59	61	69	68	61	68	69	69	76	79	84	83	91	117	114	122	122	120	122	120	127	132	132	120	115	128	
Peds	1	0	0	0	0	0	0	0	1	0	0	2	0	3	0	6	5	9	6	5	5	4	4	5	6	5	4	1	1	4	
<b>▲ SUSPECTED</b>	1	1	3	1	2	0	2	2	3	3	2	3	3	2	0	3	4	1	3	1	1	1	2	3	2	6	2	3	2	4	5
Adult	1	1	3	1	2	0	2	1	2	3	2	3	2	1	0	1	3	1	3	1	1	1	3	2	6	2	3	2	4	5	
Peds	0	0	0	0	0	0	0	1	1	0	0	1	1	1	0	2	1	0	0	0	0	1	0	0	0	0	0	0	0	0	
<b>✕ OCCUPIED</b>	401	400	417	409	420	407	413	406	388	421	435	426	430	429	411	410	433	471	452	451	457	453	460	471	476	474	464	458	453	449	
Adult	371	371	384	389	402	388	395	391	371	401	415	403	409	408	395	393	412	446	426	425	430	429	432	441	443	444	431	430	428	423	
Peds	30	29	33	20	18	19	18	15	17	20	20	23	21	21	16	17	21	25	26	26	27	24	28	30	33	30	33	28	25	26	
<b>◆ SYSTEM AVL</b>	172	173	163	174	168	173	167	175	184	172	149	168	167	163	179	171	154	149	160	159	145	153	158	160	154	156	150	156	147	167	
Adult	141	141	135	133	125	131	124	129	140	131	108	130	127	123	134	127	114	113	125	124	111	116	125	129	126	125	122	123	111	132	
Peds	31	32	28	41	43	42	43	46	44	41	41	38	40	40	45	44	40	36	35	35	34	37	33	31	28	31	28	33	36	35	
<b>■ SYSTEM TTL</b>	573	573	580	583	588	580	580	581	572	593	584	594	597	592	590	581	587	620	612	610	602	606	618	631	630	630	614	614	600	616	
Adult	512	512	519	522	527	519	519	520	511	532	523	533	536	531	529	520	526	559	551	549	541	545	557	570	569	569	553	553	539	555	
Peds	61	61	61	61	61	61	61	61	61	61	61	61	61	61	61	61	61	61	61	61	61	61	61	61	61	61	61	61	61	61	

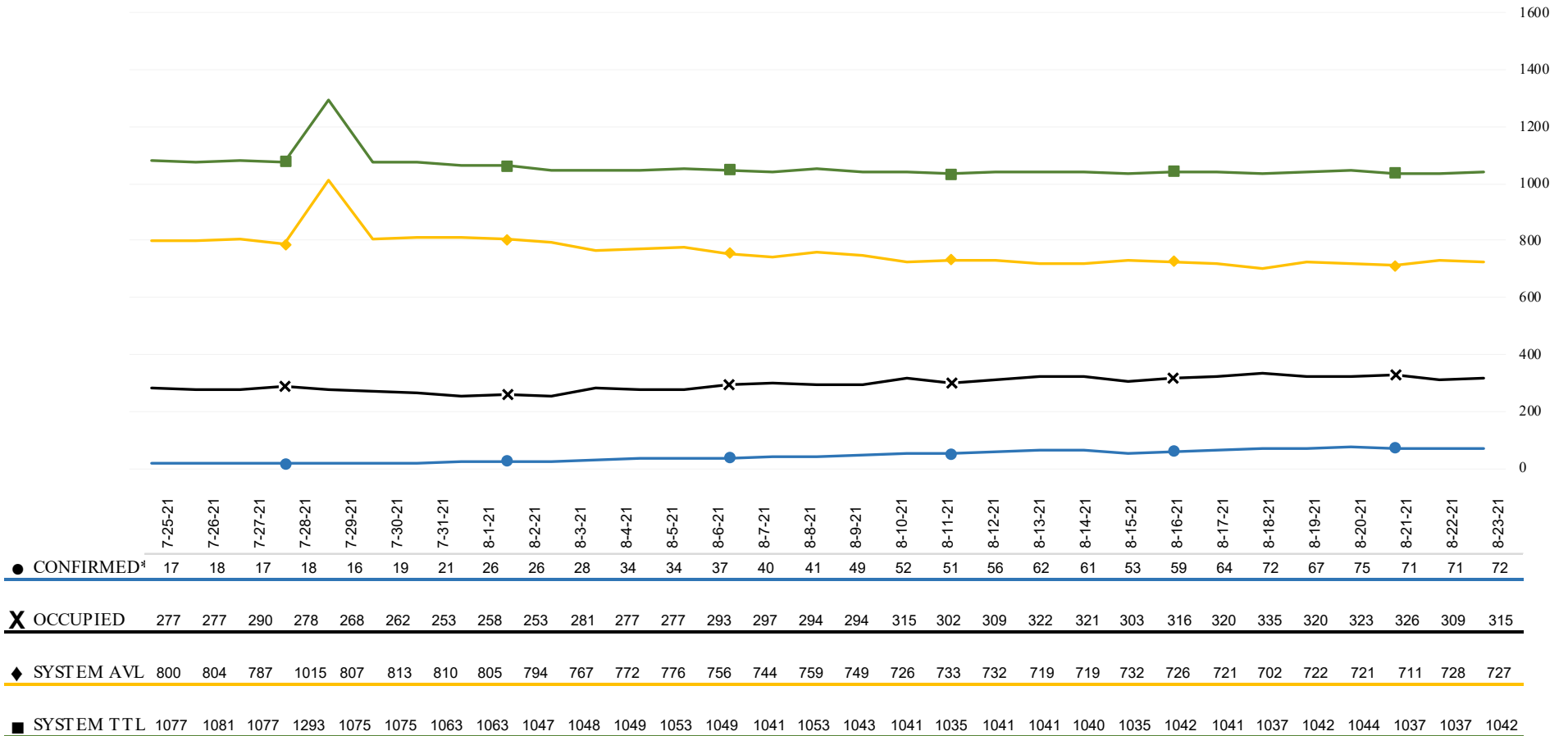
08/24/21

**COVID 19 ORANGE COUNTY HOSPITAL SYSTEM DATA (CA SNOWFLAKE SERVER)**

**VENTILATORS (07/25/21 - 08/23/21) | 33 ACUTE CARE FACILITIES REPORTING**

**VENTILATOR INSIGHTS**  
07-25-21 thru 08-23-21:

- Confirmed COVID+ patients on ventilators increased by 323.5%
- ✕ Occupied ventilators increased by 13.7%
- ◆ System available ventilators decreased by -9.1%
- Total system ventilators decreased by -3.2%



\*Confirmed includes ED values

\*Data Source: California Department of Public Health (CDPH) – Snowflake server

\*\*Current Snowflake Data Dictionary may be found at:

[https://www.calhospital.org/sites/main/files/file-attachments/data\\_dictionary\\_cha\\_covid\\_tracker\\_4-17-20.pdf](https://www.calhospital.org/sites/main/files/file-attachments/data_dictionary_cha_covid_tracker_4-17-20.pdf)

**Acute Care Hospital PPE / Ventilator Supplies Days on Hand – (31/33 ACHs reported)**

Reporting Date: 8/23/21*	30 days +	15-30 days	7-14 days	4-6 days	0-3 days	Not Reported
Ventilator Supplies**	8	6	14	2	1	2
N95 Masks**	28	3	0	0	0	2
Surgical Masks**	27	2	2	0	0	2
Face Shields**	25	3	2	1	0	2
Gloves**	18	8	5	0	0	2
Gowns**	20	6	4	1	0	2

**Hospital Criteria for shifting to Crisis Care Strategies**

**LEGEND**

**STATUS**

CRITERIA	STATUS		
	Normal Operations	Modified Operations	Modified Operations Assistance Needed
Rate of change in Hospitalized COVID-19 patients (doubling time over last 7 days)	Never to 4 weeks to double	4 weeks to 2 weeks to double	Less than 2 weeks to double
Absolute COVID-19 Census in the hospitals across Orange County	Less than 750	750-1500	>1500
Hospital census as a percentage of staffed capacity	<80%	80% to 90%	>90%
Hospital ICU census as a percentage of staffed ICU capacity	<70%	70% to 85%	>85%

**Hospital Criteria for shifting to Crisis Care Strategies**

8/23/21

**STATUS**

CRITERIA	STATUS		
	Normal Operations	Modified Operations Under Control	Modified Operations Assistance Needed
Rate of change in Hospitalized COVID-19 patients (doubling time over last 7 days)	Never to 4 weeks to double		
Absolute COVID-19 Census in the hospitals across Orange County	564		
Hospital census as a percentage of staffed capacity	70%		
Hospital ICU census as a percentage of staffed ICU capacity		73%	

**AGENCY OPERATIONS CENTER / LOGISTICS SECTION**

- The AOC is activated **M-F from 0900-1600 at Level II**; Warehouse Ops are M-F - 0900-1600.
- SCARCE Resources: Gloves, Syringes, Needles

**Inventory Report 5/24/21 - 8/18/21**

**Logistics Daily Units Distributed 8/19 - 8/20/21**

N95 Mask	500
Surgical Mask	28,000
Gown	0
Gloves	0
PPE-Suit	0
Face Shields/Eye Protection	0
Hand Sanitizer	0
Other	11,858
<b>Total Units</b>	<b>40,358</b>

**Medical Supply/Equipment Total Units Distributed**

N95 Mask	153,200
Surgical Mask	317,170
Gowns	730,065
PPE-Suit	1,000
Gloves	2,234,500
Eye Protection	63,089
Hand Sanitizer	6,285
Other Items	335,993
<b>Total Units</b>	<b>3,017,622</b>

**Resource Requests - Updated 8/23/21 at 0809**

Received ■ Filled ●

