

Overview of Substance Use Disorder (SUD) Services Within Orange County Health Care Agency

Drug Medi-Cal Organized
Delivery System (DMC-ODS)



Presentation Overview

- Access to Services
- DMC-ODS Outpatient and Residential Providers
- Level of Care Transitions - How Clients Move Through the Continuum of Care
- Additional SUD Services and Programs

Access to Services

- Beneficiary Access Line (BAL) – 24 hour access
- OC Links
- DMC-ODS Providers
- County Mental Health and SUD Outpatient Clinics
- Collaborative Court Evaluations
- AB109 Screeners
- Authorization for Residential Treatment (ART) Team

DMC-ODS Outpatient and Residential Providers

Levels 1.0 Outpatient

10 County and Contracted Providers with a total of 16 clinic locations billing DMC-ODS

4 County-operated adult SUD programs for adult Medi-Cal beneficiaries and uninsured clients

- Perinatal services available at these locations
- DUI/Drug Court Programs available at these locations and 1 additional location

2.1 Intensive Outpatient

5 contracted SUD programs for Medi-Cal beneficiaries with 11 locations

- 2 providers (6 locations) serve adults and adolescents

Perinatal

The County has 4 outpatient clinics that serve women who are pregnant or are parenting. Each clinic has childcare through a CO-OP

The County at the beginning of DMC had no Perinatal programs for residential treatment. Today there are 2 providers that serve beneficiaries for both the 3.1 and the 3.5 level for a total of 48 beds.

Recovery Services



10 County and Contracted providers billing DMC-ODS for Recovery Services



Our Recovery Services model is used as a step-down, or a long-term recovery model, in our system of care and is integrated into our providers



Offered to clients who have completed a treatment program



Services include:
Outpatient counseling
Recovery monitoring
Peer to Peer services
Relapse Prevention
Education and job skills
Family support
Support groups
Ancillary services

Narcotic Treatment Programs (NTP)

Two Contract Providers with 5
clinic locations

2,450 slots

Have added Mission Viejo location
this year to cover the entire
county



Non-NTP-Based Medication Assisted Treatment Programs

- 1 Contract Provider with 3 clinic locations with Vivitrol available
- List of Federally Qualified Health Centers (FQHC) available that provide service for Vivitrol, Suboxone and oral Naltrexone
- MAT services for youth are currently available for youth in Probation facilities and through FQHCs

Level 3.1 Residential

11 legal entities; 8 legal entities billing DMS-ODS for 3.1 Residential, 2 entities bill AB109 and 1 new provider

11 sites

Up to 278 bed capacity

Increased bed capacity for FY19/20 for adults

Application is currently being reviewed from an Orange County provider to contract for 3.1 Residential for adolescents under 18 years old

Level 3.2 Withdrawal Management



4 legal entities billing DMC-ODS for 3.2 WM



4 sites



50 beds



2 Services are provided as a stand-alone treatment center. 2 programs are integrated with residential treatment.



Treatment is billed by the day



Application is currently being reviewed from an Orange County provider to contract for 3.2 WM for adolescents under 18 years old

Level 3.3 Residential

The County opened its first co-occurring residential facility that is open as a 3.3 and a 3.5

Bed capacity is 15 for adults 18 years and older

Application is currently being reviewed from an Orange County provider to contract for 3.3 Residential for adolescents under 18 years old

Level 3.5 Residential

4 legal entities billing DMC-ODS

5 sites

Up to 171 bed capacity

Increased bed capacity for FY 20/21 for adults

Application is currently being reviewed from an Orange County provider to contract for 3.5 Residential for adolescents under 18 years old

Level 3.7 Withdrawal Management

1 legal entity served beneficiaries through the DMC-ODS for 3.7 WM

2 sites located in Los Angeles County

Up to 70 bed capacity

Our 2 programs provided services through Spring 2021 where they terminated their contract.

Seeking in-county 3.7 WM provider (current providers are out-of-county)

Recovery Residences

6 legal entities

11 sites

24 bed capacity for women with children

158 bed capacity

3 sites provide beds for women with children

5 sites are for females only

6 sites are for males only

Total Number of Clients that utilized Recovery Residences

YEAR	18/19 FY	19/20 FY	20/21 FY
ENROLLMENTS	271	450	364
AB109/PROBATION RR ENROLLMENTS	271	297	156



Level of Care Transitions
How Clients Move Through the Continuum of Care



Transitioning Levels of Care

Provider completes an ASAM-based SUD Assessment or Re-Assessment and links to the most appropriate level of care based on medical necessity

For individuals 18 years old and over: The Authorization for Residential Treatment (ART) Team conducts assessment and authorizes residential placement and when client meets medical necessity, the client is provided an intake with the residential provider

Providers ensure linkage to the next level of care by continuing to provide follow up case management services and coordination of care

Transitioning Levels of Care – Adults Residential

Authorization for Residential Treatment (ART) Team

- The County's new centralized process for assessing by using the ASAM to determine the best LOC and referring clients to a residential treatment provider; implemented in March 2021
- Developed to streamline access for Medi-Cal and uninsured clients requesting Residential Services
- The ART Team provides assessment and authorization, provides interim services such as group counseling and case management services through in person face-to-face appointments and has telehealth capability, as needed
- Reduce the waiting period for clients to be admitted into residential treatment services

Transitioning Levels of Care – Adolescent Residential

Provider completes an ASAM-based SUD Assessment of Re-Assessment and refers to residential treatment based on medical necessity

Referring provider sends the Treatment Referral Form (TRF), PHI Release and assessment documentation to the Residential Placement Coordinator (RPC)

RPC assigns the referral to a residential provider, who then coordinates the intake with the client and referring provider

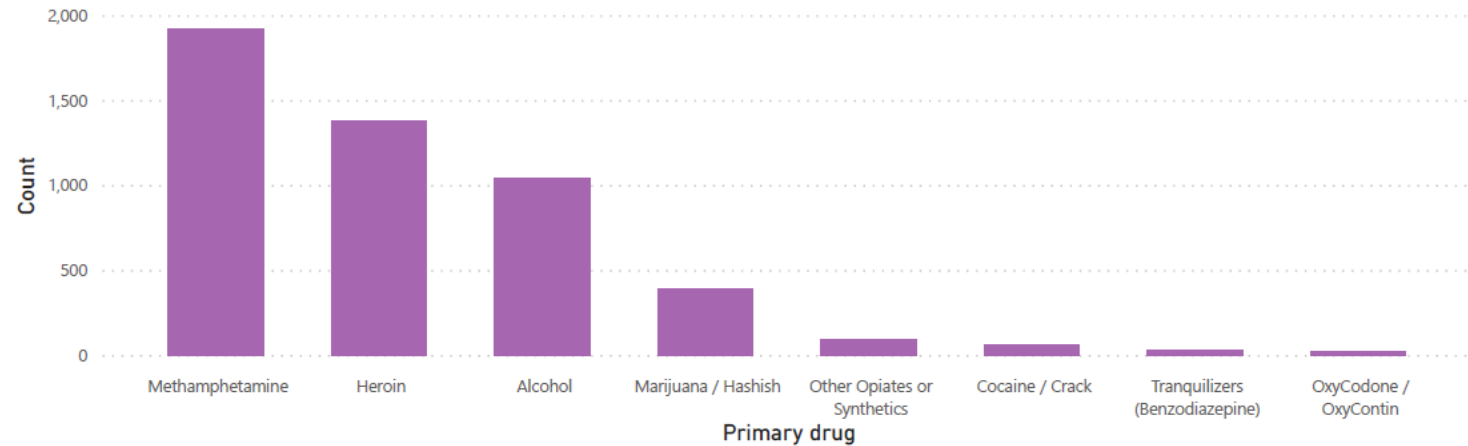
Residential to Outpatient Stepdown Rates

- Adjusted residential to outpatient calculation due to removal of certain fields from charge data.
- Additional analysis of DMC residential length of stay by level of care and by program.
- Clients with a residential stay between 61-90 days were the most likely to attend a follow-up outpatient appointment (7 and 30 days) post-discharge.
- 31.7% of all residential clients stayed in treatment between 61-90 days.

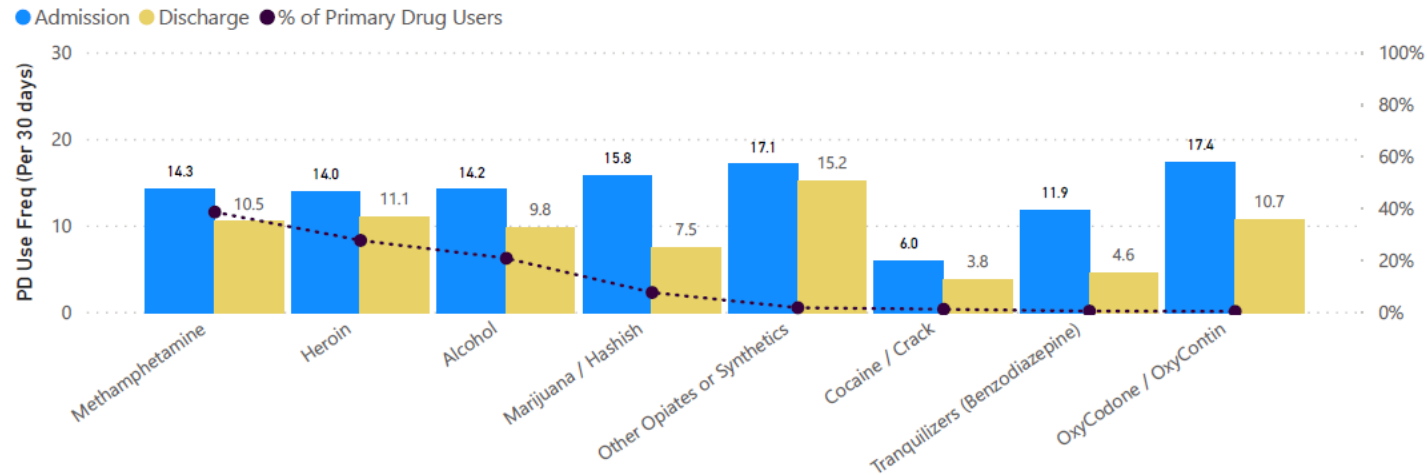
CalOMS Reporting & Dashboards

Primary Drug Usage (for admissions with paired discharges)

Primary drug at admission



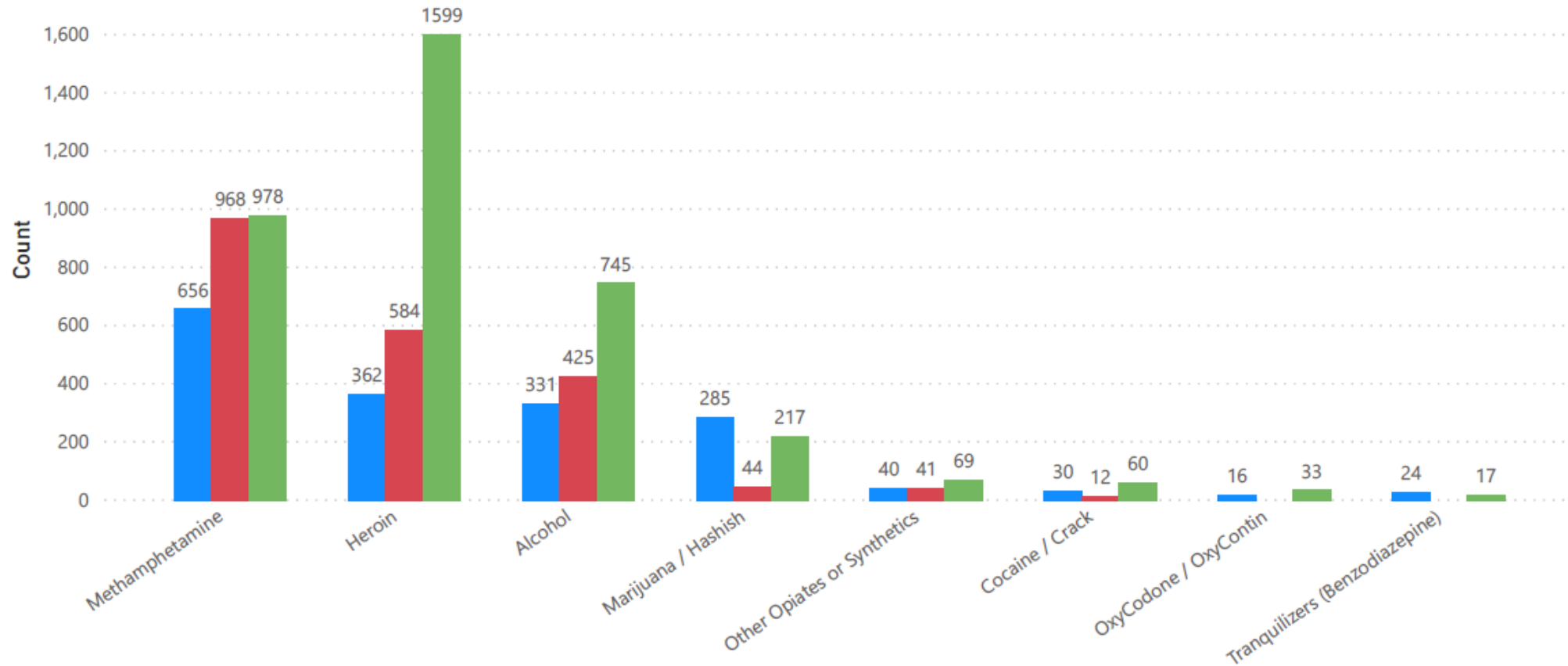
Primary Drug Use Frequency at Admission and Discharge



CalOMS Dashboard Report

Living arrangement by primary drug at admission

Current living arrangement ● Dependent living ● Homeless ● Independent living



Additional SUD Services/Programs

- SUD Peer Mentoring Program
- In Custody SUD Treatment Program
- Naloxone Distribution Project
- Hazelden Betty Ford Foundation
- Medication Assisted Treatment at County Clinic

Comparison of Data Pre and Post DMC

	2017-2018	2018-2019	2019-2020
OP	2545	2626	1,921
WM	1025	910	1,007
IP-WM	96	106	101
RES	1157	673	1,398
NTP	229	1965	2,024

Questions?

