

OVERVIEW OF CURRENT SITUATION (9/2/21 0721) Source: Johns Hopkins University & Medicine <https://coronavirus.jhu.edu/map.html>

Cases / Deaths
 Worldwide: 218,641,868 / 4,546,512
 Nationwide: 39,407,708 / 642,195
 California: 4,383,152 / 66,036
 Orange Co: 286,536 / 5,236 Source: [Orange County COVID-19 Case Counts & Testing Figures](#)

ORANGE COUNTY PUBLIC HEALTH (as of 9/1/21 0930)

Orange County COVID-19 Summary* [click for full details](#)

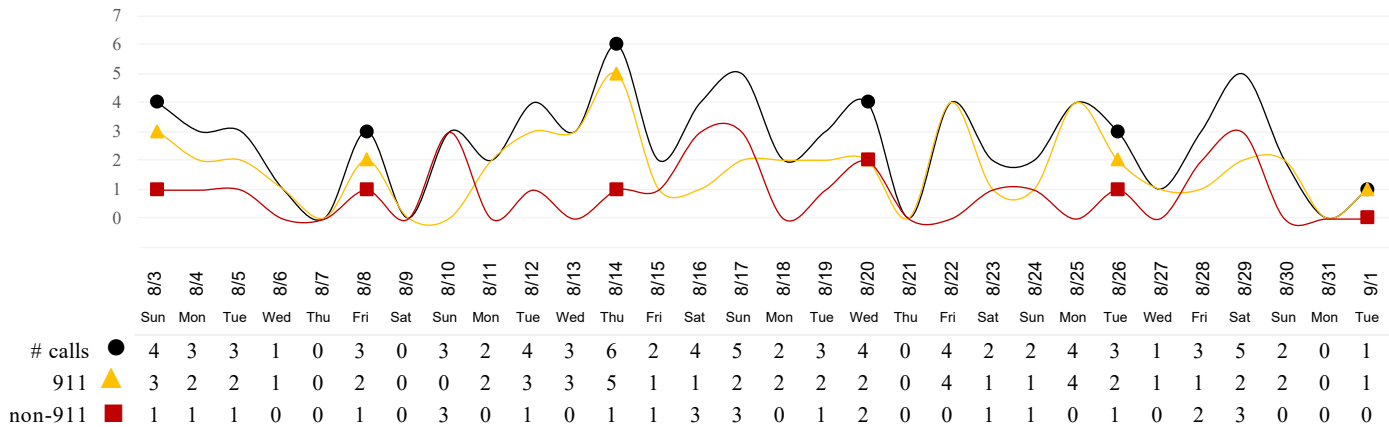
	Fri 8/27/21	Sat 8/28/21	Sun 8/29/21	Mon 8/30/21	Tues 8/31/21	Wed 9/1/21	Thu 9/2/21
Cases Reported to Date	283,537	X**	X**	285,098	285,453	286,099	286,536
Deaths Reported to Date	5,202	X**	X**	5,220	5,225	5,229	5,236
Tests Reported Today	13,351	X**	X**	31,388	10,851	13,430	13,510
Cumulative Tests to Date	4,628,707	X**	X**	4,660,095	4,670,946	4,684,376	4,697,886

*Data posted is always preliminary & subject to change. More information may become available as individual case investigations are completed. **LOCAL DATA MAY BE DIFFERENT FROM THE STATE WEBSITE DATA.** ** Weekend values reported on Monday.

SKILLED NURSING/ASSISTED LIVING/RESIDENTIAL CARE FACILITY – TRENDS

*Data Source: Orange County Medical Emergency Data System (OC-MEDS) – Updated 9/1/21

Calls to SNFs/Congregate Living with Primary Impressions: Fever/Cough, Influenza-like Illnesses
(Transports to ERCs Only - Last 30 Days)



*Data Source: California Department of Public Health (CDPH)

Skilled Nursing/Assisted Living/Residential Care Facility PPE / Ventilator Supplies Days on Hand
(69/73 SNFs reported)

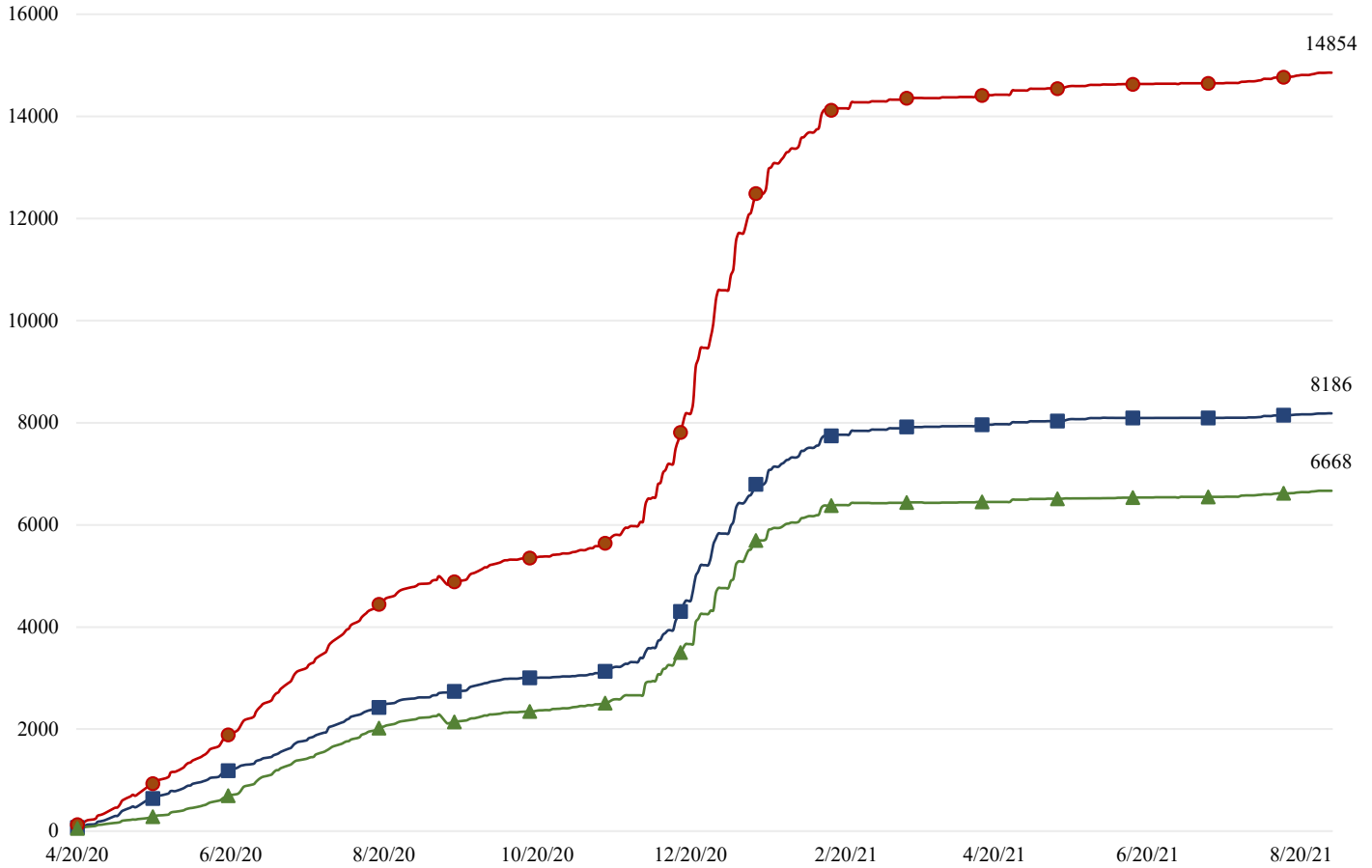
Reporting Date: 9/1/2021	0 - 3 days	4 - 7 days	8-14 days	15+ days
N95 Masks	0	2	8	59
Surgical Masks	0	2	6	61
Eye Protection	0	2	7	60
Gowns	0	2	5	62
Gloves	0	2	7	60
Alcohol-Based Hand Sanitizer	0	2	7	60

*Data Source: Orange County Health Care Agency – Public Health – 9/1/21

NOTE: Decrease in the COVID + in staff seen on graph is due to data being cleaned and removing duplicates of those that work in multiple OC facilities or are contract staff and care for residents at multiple facilities.

Resident COVID+ ■ Staff COVID+ ▲ Total ●

COVID+ in Congregate Healthcare*



*Data Source: Orange County Health Care Agency – Public Health

Current Facility Outbreaks (as of 9/2/21 0953)

An “Outbreak” is two (2) or more confirmed cases of COVID-19 in facility occurring within 14 days.

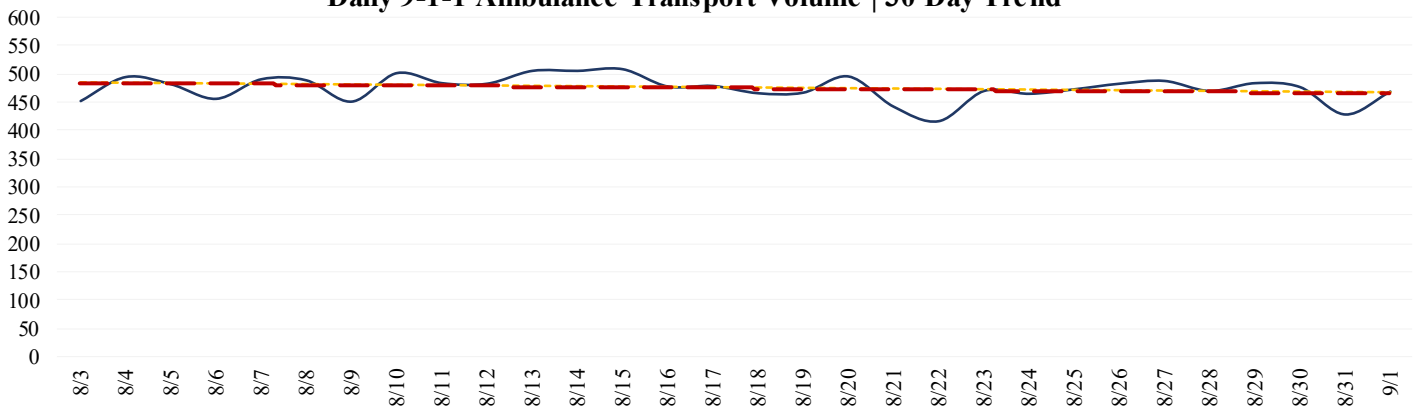
Facility Type by Licensing Category, Count		Facility Name Alphabetical
Skilled Nursing Facility	2	Freedom Village Healthcare Center, Mission Capistrano Healthcare Center
Elderly Assisted Living	8	Brookdale Anaheim, Casa Doctora Iii, Del Obispo Terrace Senior Living, My Home Board & Care, Newport Bay, Sunrise Assisted Living At Tustin, The Groves Of Tustin, Vivante On The Coast

EMERGENCY MEDICAL SERVICES STATUS

*Data Source: Orange County Medical Emergency Data System (OC-MEDS)

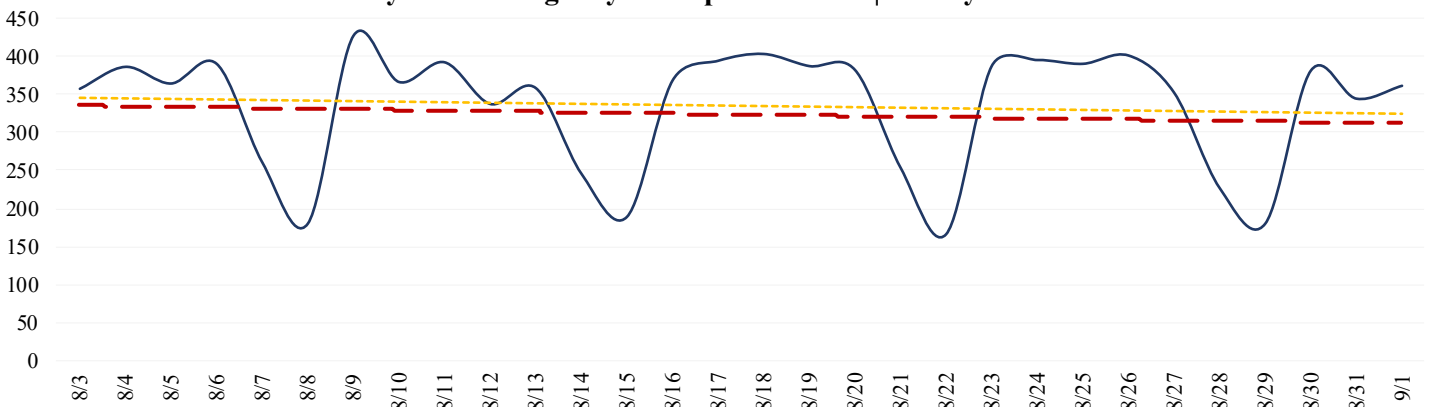
9-1-1 Ambulance Transports appear to have plateaued and are **trending lower over the last two weeks** (Updated 9/1/21).

Daily 9-1-1 Ambulance Transport Volume | 30 Day Trend



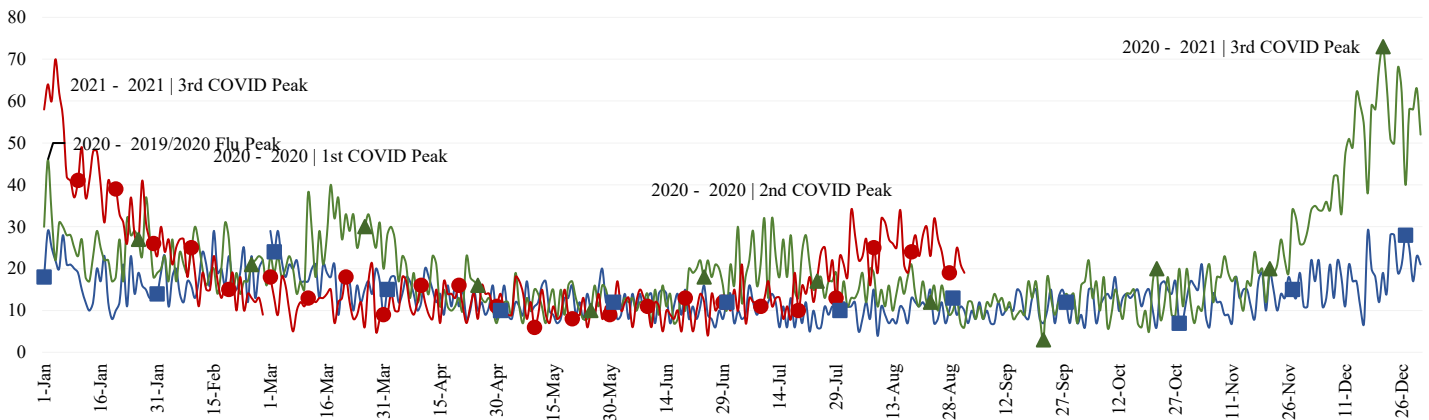
Non-emergency Ambulance Transports **appear to be fairly stable** (Updated 9/1/21).

Daily Non-Emergency Transport Volume | 30 Day Trend



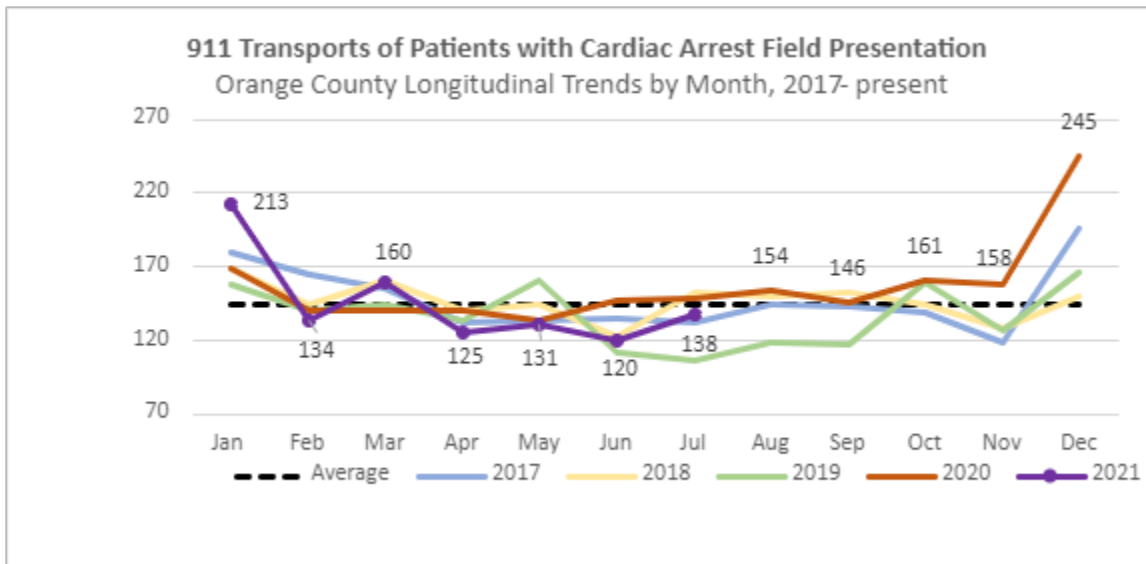
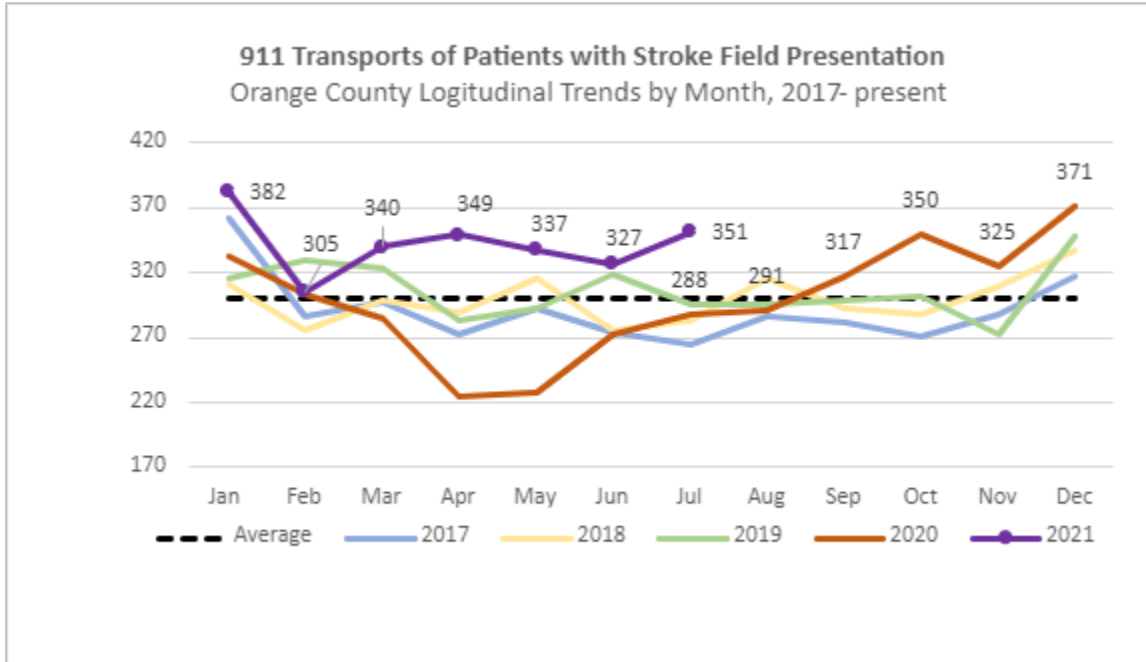
9-1-1 Transports of patients with Cold/Flu/ILI/COVID primary impressions **continue to trend lower from a peak reached a couple weeks ago.** (Updated 9/1/21).

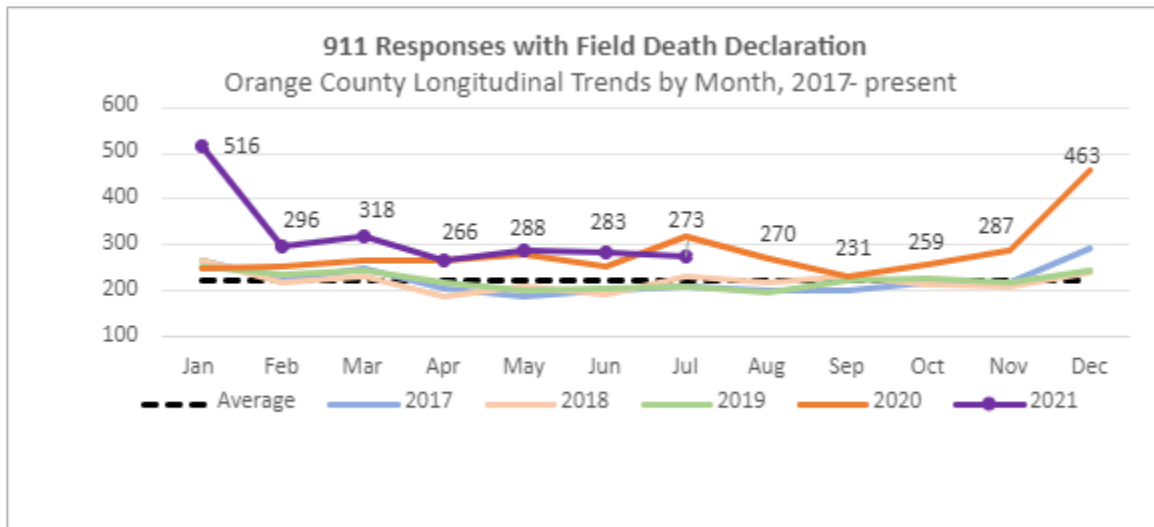
EMS Provider Impressions - Cold/Flu/ILI/COVID-19 Year Over Year Comparison (2019 ■, 2020 ▲, & 2021 ●)



911 EMS SYSTEM MONITORING

*Data Source: Orange County Medical Emergency Data System (OC-MEDS)





Summary Data Table for Chart, “911 Responses with Field Death Declaration”

	2017	2018	2019	2020	2021
January	268	267	254	250	516
February	224	216	235	254	296
March	248	233	245	265	318
April	206	186	220	265	266
May	186	210	202	281	288
June	201	190	205	254	283
July	211	233	208	320	273
August	201	218	195	270	
September	199	233	222	231	
October	217	213	227	259	
November	217	211	217	287	
December	294	242	246	463	
Total	2378	2410	2430	3399	

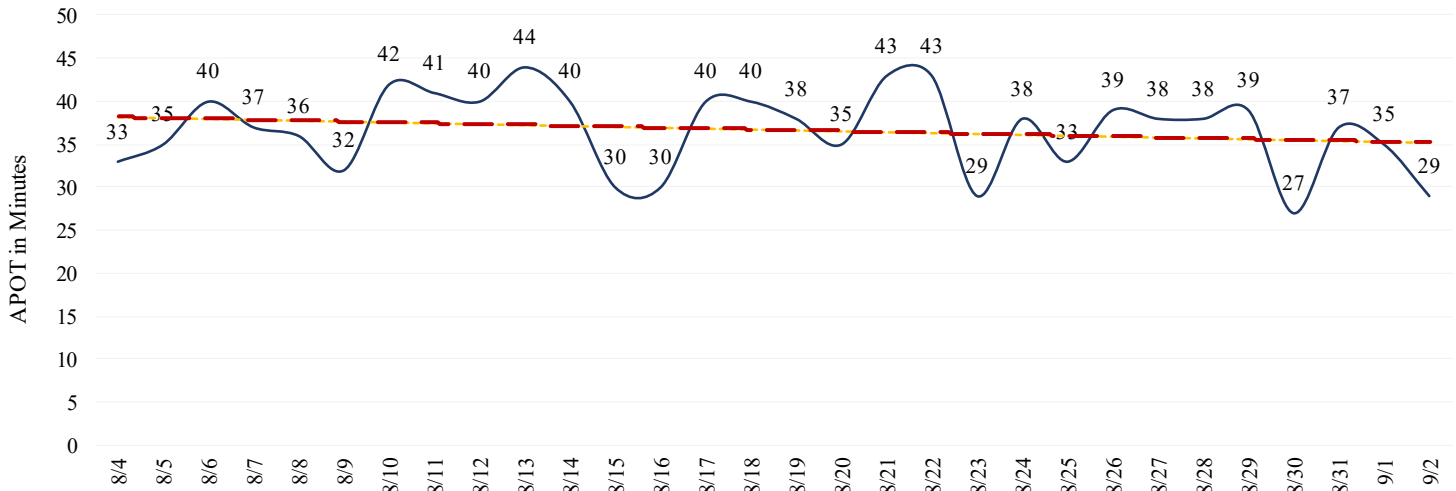
- Ambulance Patient Offload Time (APOT) is defined as the time the ambulance arrives at the receiving destination (wheels stop) to the time that the ambulance crew physically transfers the patient to the ED gurney. Last 24 hours: **Countywide - 29m19s since the report creation time (09/02/21 @ 0840). Countywide APOT continue to gradually decline, but remain higher than normal.**
- **Nine (9) ERCs had APOT times greater than thirty (30) minutes.**
- **One (1) ERCs had APOT times greater than sixty (60) minutes.**

The chart below displays a daily trend over the last 30 days.

Note: a handful of ERCs were close to the 30 minute threshold, but were not over it.

*Data Source: Orange County Medical Emergency Data System (OC-MEDS) – Updated 9/2/21

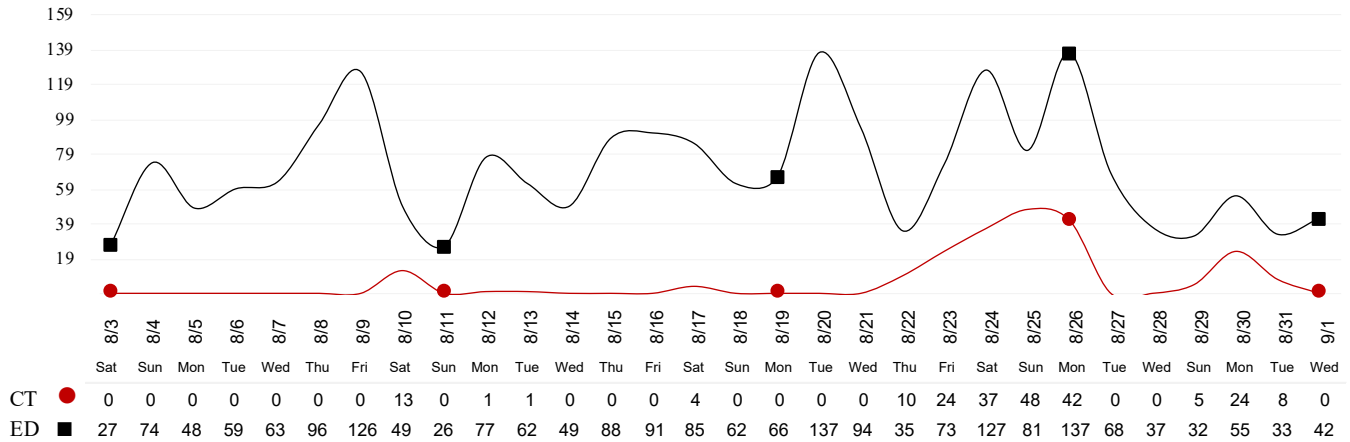
COVID 19 - APOT 90th percentile | Daily Trend



- **Emergency Department (ED) Diversion & Computerized Tomography (CT) (ED closed to all ambulance transport due to no ED capacity or no CT available) for the last 30 days.**

*Data Source: Orange County Medical Emergency Data System (OC-MEDS) – Updated 9/1/21

Hours of Diversion per 24-Hour Period
 (25 Hospitals, rounded to nearest hour - Last 30 Days)



09/02/21

26): Anaheim Regional, Anaheim Global, Chapman Global, CHOC, CHOC at Mission, Foothill, Fountain Valley, Garden Grove, Hoag-Irvine, Hoag-Newport Beach, Huntington Beach, Kaiser-Anaheim, Kaiser-Irvine, La Palma, Los Alamitos, Mission –Laguna Beach, Mission-Mission Viejo, Orange Coast Memorial, Orange County Global, Placentia Linda, Saddleback Memorial, Saint Jude, South Coast Global, St. Josephs, UCI, West Anaheim

*Data Source: California Department of Public Health (CDPH) – Snowflake server
 Current Snowflake Data Dictionary may be found at:

https://www.calhospital.org/sites/main/files/file-attachments/data_dictionary_cha_covid_tracker_4-17-20.pdf

33 HOSPITALS

Date	Census All System	Occupancy % System	COVID+ Hospitalized System	COVID+ Hospitalized ICU Only (Adult & Peds)	% COVID+ hospitalized of ICU Occupied (Adult & Peds)	ICU Occupied (Adult & Peds)**	ICU Available (Adult & Peds)***	% ICU Available (Adult & Peds)****	ICU by Patient Age Group						% Ventilators Available
									Adult Occupied	Adult Available	Adult % Available	Pediatric Occupied	Pediatric Available	Pediatric % Available	
8/19	4054	73%	571	137	29%	474	156	25%	444	125	22%	30	31	51%	69%
8/20	4028	73%	574	136	29%	464	150	24%	431	122	22%	33	28	46%	69%
8/21	3997	72%	560	121	26%	458	156	25%	430	123	22%	28	33	54%	69%
8/22	3915	71%	570	116	26%	453	147	25%	428	111	21%	25	36	59%	70%
8/23	3843	70%	564	132	29%	449	167	27%	423	132	24%	26	35	57%	70%
8/24	3950	72%	573	129	28%	459	159	26%	432	125	22%	27	34	56%	69%
8/25	3984	73%	565	122	26%	478	140	23%	443	114	20%	35	26	43%	69%
8/26	4049	73%	592	132	28%	480	141	23%	444	116	21%	36	25	41%	69%
8/27	4056	74%	549	121	25%	475	150	24%	438	126	22%	37	24	39%	68%
8/28	3997	73%	545	136	29%	472	144	23%	434	121	22%	38	23	38%	68%
8/29	3896	72%	546	139	30%	462	152	25%	428	125	23%	34	27	44%	67%
8/30	3820	70%	556	150	34%	447	160	26%	413	133	24%	34	27	44%	67%
8/31	3878	74%	534	149	33%	455	153	25%	422	125	23%	33	28	46%	67%
9/1	3887	73%	521	143	31%	467	147	24%	438	115	21%	29	32	52%	67%

ICU occupied PREVIOUSLY ICU CDPH OC Occupied – CDPH combines occupied ICU adult beds and occupied ICU pediatric beds as a reporting metric on their COVID-19 Hospital dashboard. *ICU Available PREVIOUSLY ICU CDPH OC Available – CDPH subtracts the sum of occupied ICU adult beds and occupied ICU pediatric beds, from the sum of ICU total adult beds and ICU total pediatric beds to determine ICU available beds on their COVID-19 Hospital dashboard. ****%ICU AVAILABLE PREVIOUSLY % ICU CDPH OC Available – The sum of occupied ICU adult beds and occupied ICU pediatric beds, divided by the sum of ICU total adult beds and ICU total pediatric beds, as a percentage. *****%COVID+ hospitalized of ICU Occupied PREVIOUSLY % ICU Beds System Available – All ICU beds reported as available in Orange County, which includes Adult, PICU, and NICU, and any other ICU bed types.

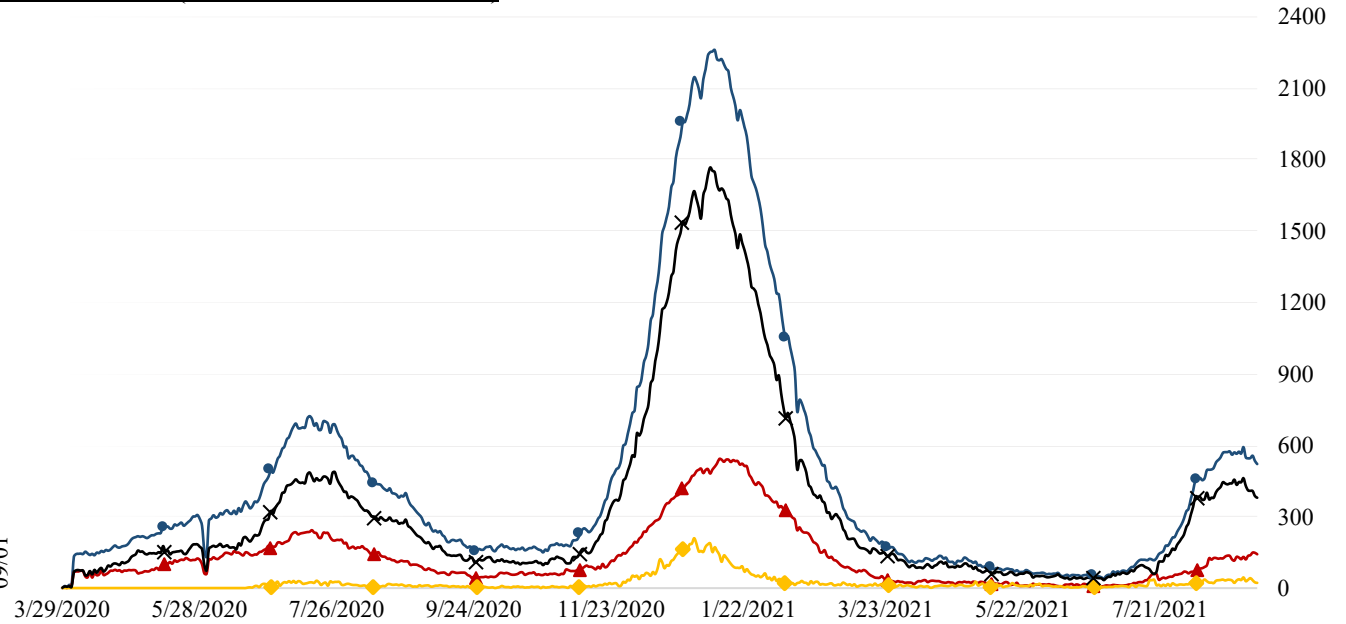
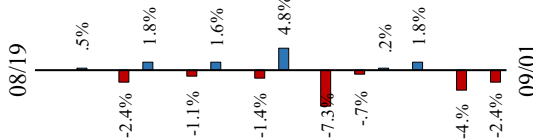
09/02/21

COVID 19 ORANGE COUNTY HOSPITAL SYSTEM DATA (CA SNOWFLAKE SERVER)

COVID+ CENSUS by BED TYPE | 09/01/2021

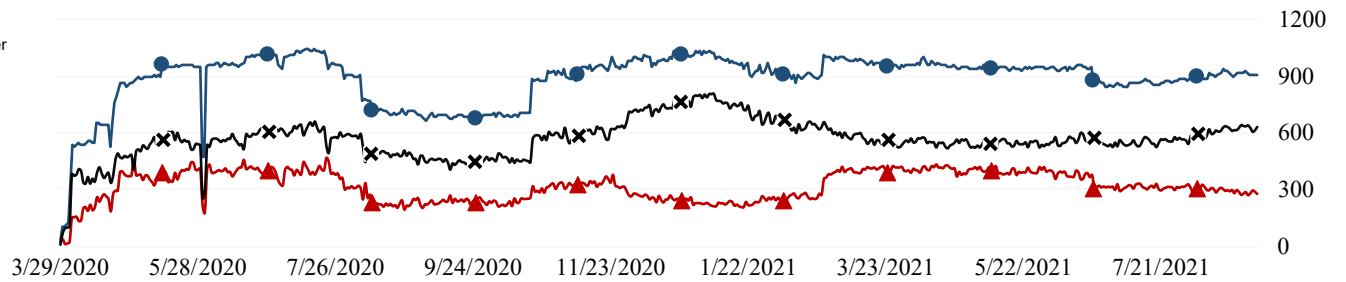
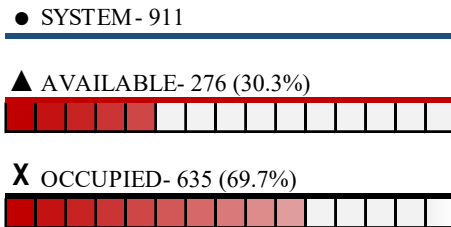
▲ ICU	143	-6	-4.0%
◆ ED OVERFLOW	22	-2	-8.3%
X NON-ICU	378	-7	-1.8%
● SYSTEM	521	-13	-2.4%
3 Day 08-29-21	546	-25	-4.6%
7 Day 08-25-21	565	-44	-7.8%

14 Day System COVID+ Change

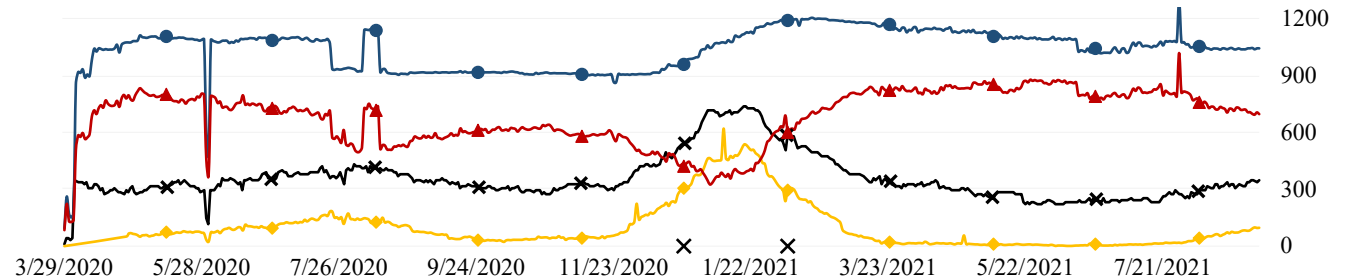
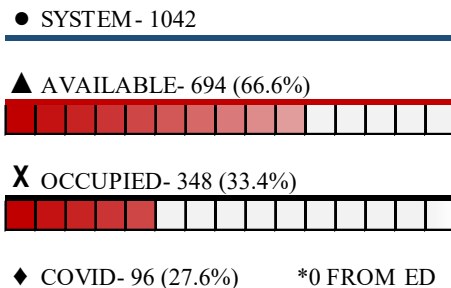


ICU SYSTEM CENSUS | (09/01/21)

*includes adult, PICU, NICU & other



VENTILATORS | (09/01/21)



09/02/21

COVID 19 ORANGE COUNTY HOSPITAL SYSTEM DATA (CA SNOWFLAKE SERVER)

7 DAY HISTORY BED OCCUPANCY | 09/01/2021

● **SYSTEM BEDS (INCLUDES SURGE)- 6884**

◆ **INPATIENT INCLUDING SURGE- 3970 (57.7%)**

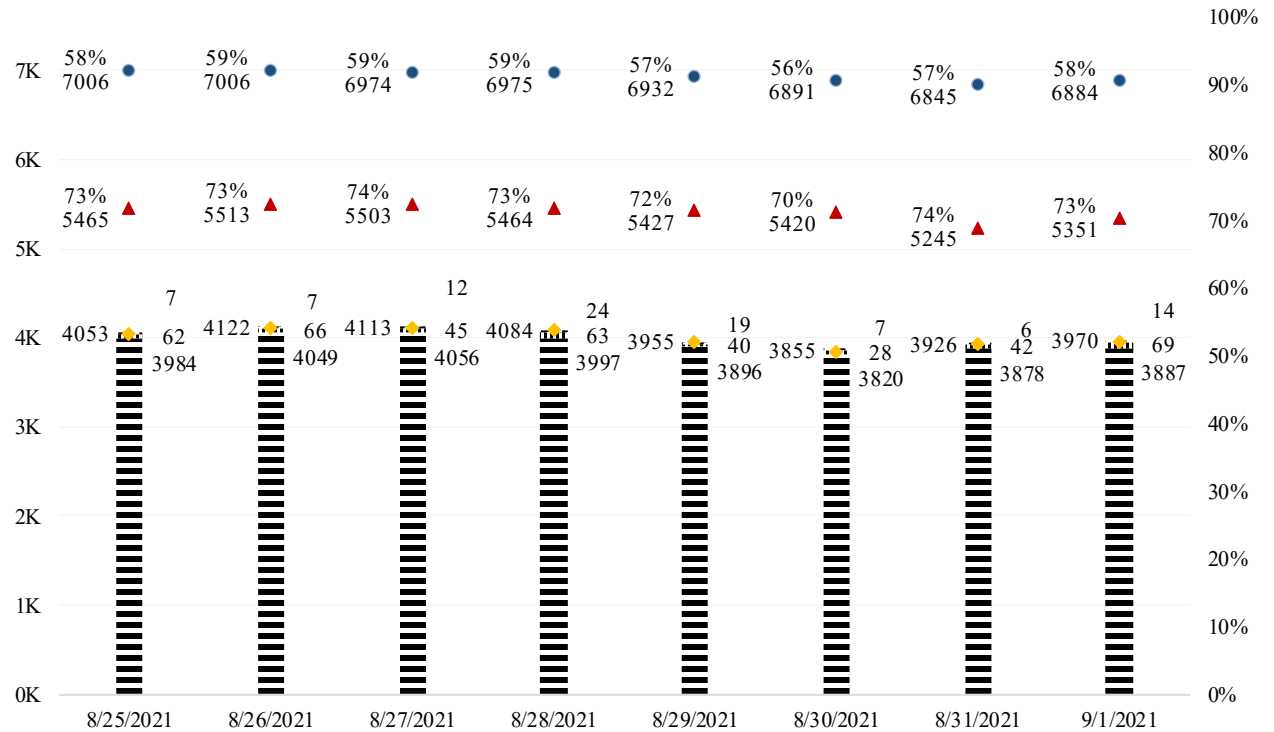


|||| **SURGE NON ICU INPATIENT- 69**

||||| **SURGE ICU INPATIENT- 14**

▲ **NON SURGE INPATIENT BEDS- 5351**

||||| **NON SURGE INPATIENT- 3887 (72.6%)**



SURGE CENSUS | 09/01/2021

● **SURGE BED SYSTEM- 981 (ICU- 104 | NON ICU- 877)**

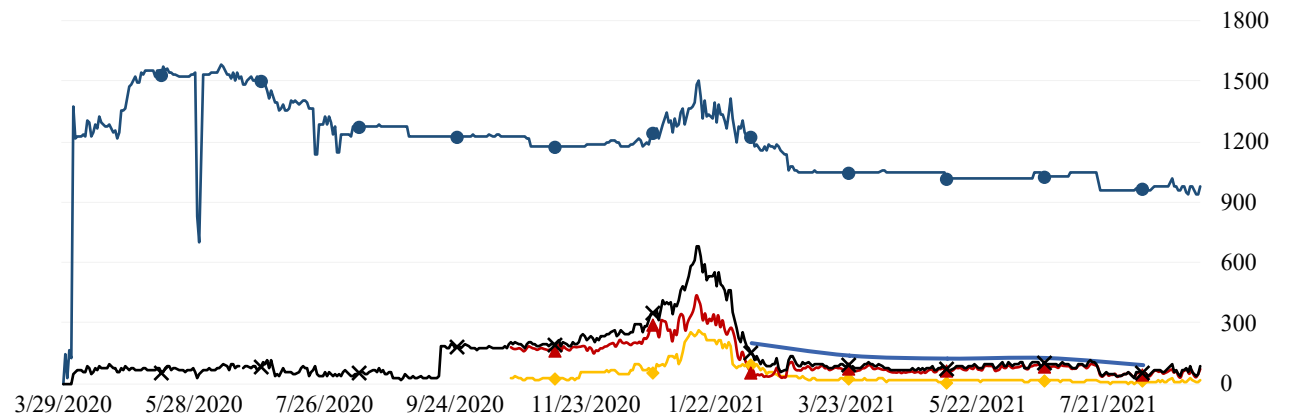
X **SURGE BED PATIENTS SYSTEM- 83 (8.5%)**



▲ **SURGE BED NON ICU PATIENTS- 69 (7.9%)**



◆ **SURGE BED ICU PATIENTS- 14 (13.5%)**



09/02/21

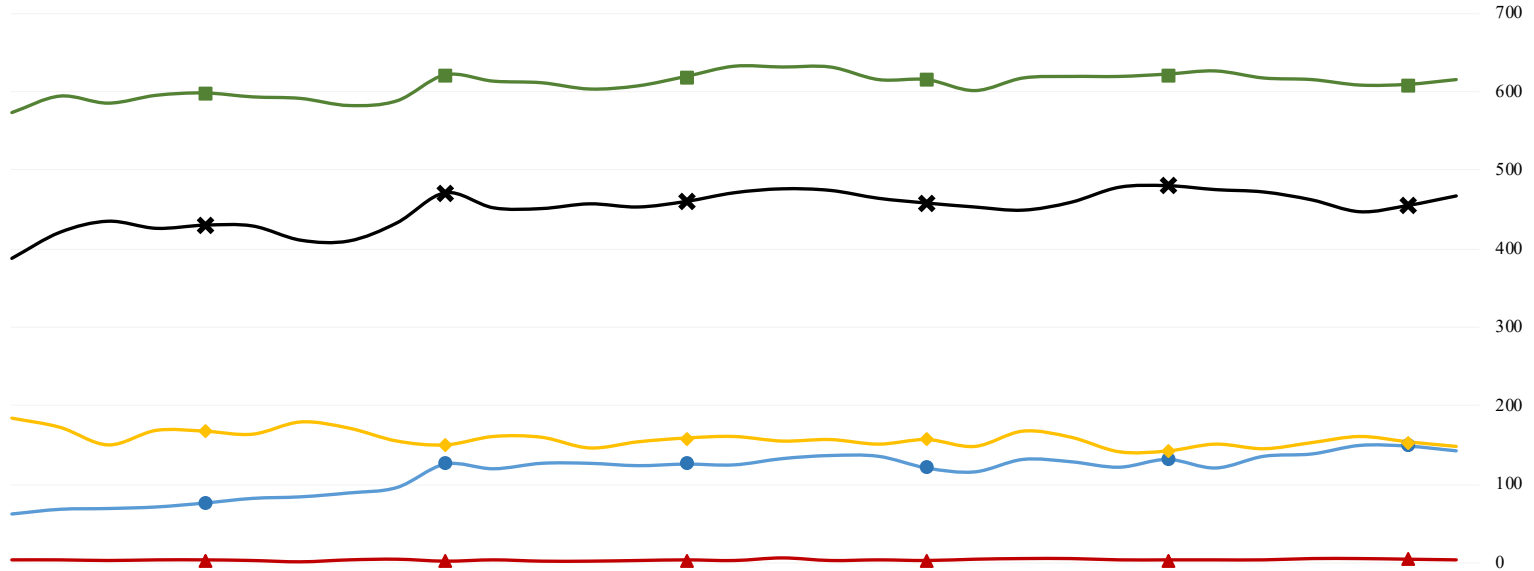
COVID 19 ORANGE COUNTY HOSPITAL SYSTEM DATA (CA SNOWFLAKE SERVER)

NON SURGE ICU BEDS: ADULT & Peds COMBINED (08/03/21 - 09/01/21) | 33 ACUTE CARE FACILITIES REPORTING

ICU INSIGHTS

08-03-21 thru 09-01-21:

- Confirmed COVID+ in ICU increased by 110.3%
- ▲ Confirmed suspect in ICU had no change at 0.0%
- ✕ Occupied ICU increased by 10.9%
- ◆ Available ICU decreased by -14.5%
- System ICU increased by 3.5%



	8-3-21	8-4-21	8-5-21	8-6-21	8-7-21	8-8-21	8-9-21	8-10-21	8-11-21	8-12-21	8-13-21	8-14-21	8-15-21	8-16-21	8-17-21	8-18-21	8-19-21	8-20-21	8-21-21	8-22-21	8-23-21	8-24-21	8-25-21	8-26-21	8-27-21	8-28-21	8-29-21	8-30-21	8-31-21	9-1-21
● CONFIRMED	68	69	71	76	82	84	89	96	126	120	127	127	124	126	125	133	137	136	121	116	132	129	122	132	121	136	139	150	149	143
<i>Adult</i>	68	69	69	76	79	84	83	91	117	114	122	122	120	122	120	127	132	132	120	115	128	127	117	127	118	133	137	146	142	137
<i>Peds</i>	0	0	2	0	3	0	6	5	9	6	5	5	4	4	5	6	5	4	1	1	4	2	5	5	3	3	2	4	7	6
▲ SUSPECTED	3	2	3	3	2	0	3	4	1	3	1	1	2	3	2	6	2	3	2	4	5	5	3	3	3	3	5	5	4	3
<i>Adult</i>	3	2	3	2	1	0	1	3	1	3	1	1	1	3	2	6	2	3	2	4	5	5	3	3	3	3	4	5	4	3
<i>Peds</i>	0	0	0	1	1	0	2	1	0	0	0	0	1	0	0	0	0	0	0	0	0	0	0	0	0	0	1	0	0	0
✕ OCCUPIED	421	435	426	430	429	411	410	433	471	452	451	457	453	460	471	476	474	464	458	453	449	459	478	480	475	472	462	447	455	467
<i>Adult</i>	401	415	403	409	408	395	393	412	446	426	425	430	429	432	441	443	444	431	430	428	423	432	443	444	438	434	428	413	422	438
<i>Peds</i>	20	20	23	21	21	16	17	21	25	26	26	27	24	28	30	33	30	33	28	25	26	27	35	36	37	38	34	34	33	29
◆ SYSTEM AVL	172	149	168	167	163	179	171	154	149	160	159	145	153	158	160	154	156	150	156	147	167	159	140	141	150	144	152	160	153	147
<i>Adult</i>	131	108	130	127	123	134	127	114	113	125	124	111	116	125	129	126	125	122	123	111	132	125	114	116	126	121	125	133	125	115
<i>Peds</i>	41	41	38	40	40	45	44	40	36	35	35	34	37	33	31	28	31	28	33	36	35	34	26	25	24	23	27	27	28	32
■ SYSTEM TTL	593	584	594	597	592	590	581	587	620	612	610	602	606	618	631	630	630	614	614	600	616	618	618	621	625	616	614	607	608	614
<i>Adult</i>	532	523	533	536	531	529	520	526	559	551	549	541	545	557	570	569	569	553	553	539	555	557	557	560	564	555	553	546	547	553
<i>Peds</i>	61	61	61	61	61	61	61	61	61	61	61	61	61	61	61	61	61	61	61	61	61	61	61	61	61	61	61	61	61	61

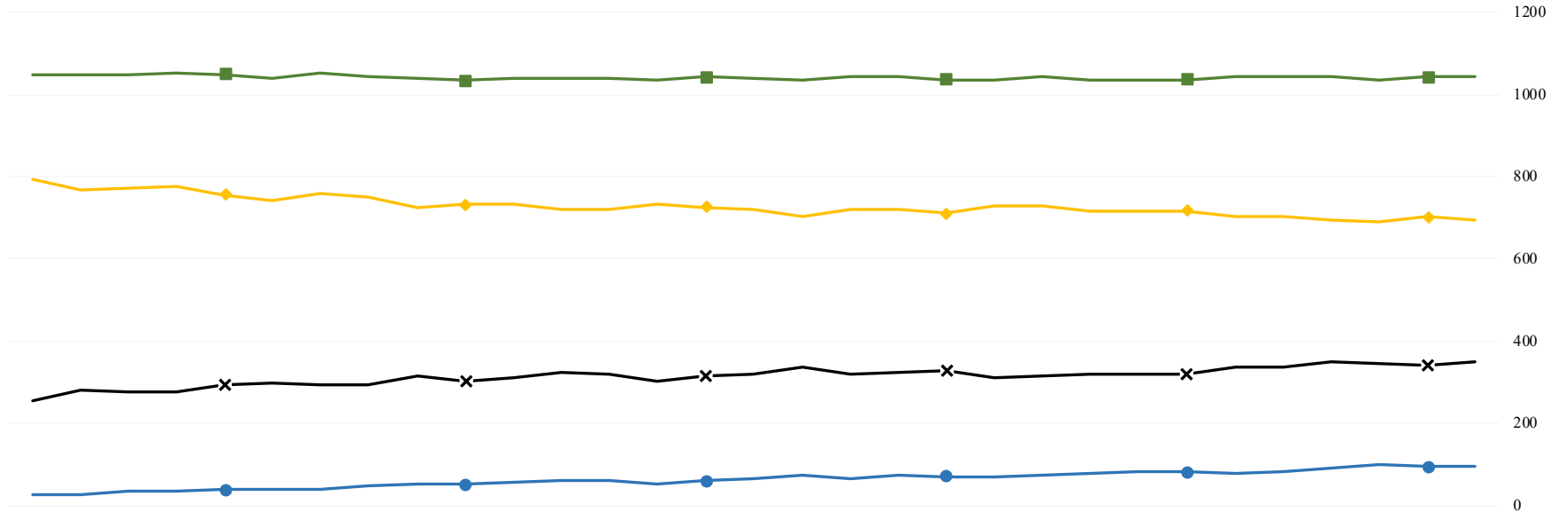
09/02/21

COVID 19 ORANGE COUNTY HOSPITAL SYSTEM DATA (CA SNOWFLAKE SERVER)

VENTILATORS (08/03/21 - 09/01/21) | 33 ACUTE CARE FACILITIES REPORTING

VENTILATOR INSIGHTS
 08-03-21 thru 09-01-21:

- Confirmed COVID+ patients on ventilators increased by 242.9%
- X Occupied ventilators increased by 23.8%
- ◆ System available ventilators decreased by -9.5%
- Total system ventilators decreased by -0.6%



	8-3-21	8-4-21	8-5-21	8-6-21	8-7-21	8-8-21	8-9-21	8-10-21	8-11-21	8-12-21	8-13-21	8-14-21	8-15-21	8-16-21	8-17-21	8-18-21	8-19-21	8-20-21	8-21-21	8-22-21	8-23-21	8-24-21	8-25-21	8-26-21	8-27-21	8-28-21	8-29-21	8-30-21	8-31-21	9-1-21
● CONFIRMED*	28	34	34	37	40	41	49	52	51	56	62	61	53	59	64	72	67	75	71	71	72	78	82	82	80	83	92	98	95	96
X OCCUPIED	281	277	277	293	297	294	294	315	302	309	322	321	303	316	320	335	320	323	326	309	315	321	320	319	338	338	349	346	339	348
◆ SYSTEM AVL	767	772	776	756	744	759	749	726	733	732	719	719	732	726	721	702	722	721	711	728	727	716	717	718	704	704	695	691	703	694
■ SYSTEM TTL	1048	1049	1053	1049	1041	1053	1043	1041	1035	1041	1041	1040	1035	1042	1041	1037	1042	1044	1037	1037	1042	1037	1037	1037	1042	1042	1044	1037	1042	1042

*Confirmed includes ED values

*Data Source: California Department of Public Health (CDPH) – Snowflake server

**Current Snowflake Data Dictionary may be found at:

https://www.calhospital.org/sites/main/files/file-attachments/data_dictionary_cha_covid_tracker_4-17-20.pdf

Acute Care Hospital PPE / Ventilator Supplies Days on Hand – (33/33 ACHs reported)

Reporting Date: 9/1/21*	30 days +	15-30 days	7-14 days	4-6 days	0-3 days	Not Reported
Ventilator Supplies**	8	6	17	1	1	0
N95 Masks**	28	4	0	1	0	0
Surgical Masks**	27	4	2	0	0	0
Face Shields**	25	3	3	1	1	0
Gloves**	20	7	4	1	1	0
Gowns**	19	7	5	2	0	0

Hospital Criteria for shifting to Crisis Care Strategies

LEGEND

STATUS

CRITERIA	STATUS		
	Normal Operations	Modified Operations	Modified Operations Assistance Needed
Rate of change in Hospitalized COVID-19 patients (doubling time over last 7 days)	Never to 4 weeks to double	4 weeks to 2 weeks to double	Less than 2 weeks to double
Absolute COVID-19 Census in the hospitals across Orange County	Less than 750	750-1500	>1500
Hospital census as a percentage of staffed capacity	<80%	80% to 90%	>90%
Hospital ICU census as a percentage of staffed ICU capacity	<70%	70% to 85%	>85%

Hospital Criteria for shifting to Crisis Care Strategies

9/1/21

STATUS

CRITERIA	STATUS		
	Normal Operations	Modified Operations Under Control	Modified Operations Assistance Needed
Rate of change in Hospitalized COVID-19 patients (doubling time over last 7 days)	Never to 4 weeks to double		
Absolute COVID-19 Census in the hospitals across Orange County	521		
Hospital census as a percentage of staffed capacity	73%		
Hospital ICU census as a percentage of staffed ICU capacity		76%	

AGENCY OPERATIONS CENTER / LOGISTICS SECTION

- The AOC is activated M-F **from 0900-1600 at Level II**; Warehouse Ops are M-F - 0900-1600.
- SCARCE Resources: Gloves, Syringes, Needles

Inventory Report 5/24/21 - 8/31/21

Logistics Daily Units Distributed 8/28 - 8/31/21

N95 Mask	0
Surgical Mask	18,960
Gown	0
Gloves	0
PPE-Suit	0
Face Shields/Eye Protection	0
Hand Sanitizer	0
Other	223,511
Total Units	242,471

Medical Supply/Equipment Total Units Distributed

N95 Mask	430,140
Surgical Mask	396,890
Gowns	675,110
PPE-Suit	1,000
Gloves	2,264,500
Eye Protection	54,676
Hand Sanitizer	7,675
Other Items	588,040
Total Units	4,418,031

Resource Requests - Updated 8/31/21 at 0917

Received ■ Filled ●

