

OVERVIEW OF CURRENT SITUATION (9/9/21 0521) Source: Johns Hopkins University & Medicine <https://coronavirus.jhu.edu/map.html>

Cases / Deaths
 Worldwide: 222,654,465 / 4,598,278
 Nationwide: 40,458,930 / 652,669
 California: 4,445,862 / 66,651
 Orange Co: 289,235 / 5,295 Source: [Orange County COVID-19 Case Counts & Testing Figures](#)

ORANGE COUNTY PUBLIC HEALTH (as of 9/9/21 1030)

Orange County COVID-19 Summary* [click for full details](#)

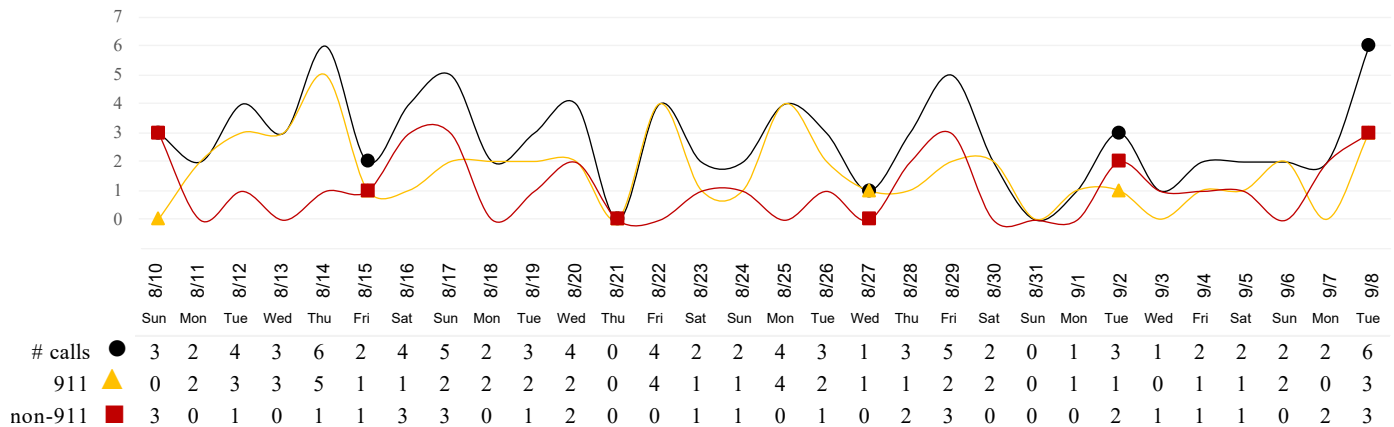
	Fri 9/3/21	Sat 9/4/21	Sun 9/5/21	Mon 9/6/21	Tue 9/7/21	Wed 9/8/21	Thu 9/9/21
Cases Reported to Date	286,950	XX**	XX**	XX**	288,601	288,939	289,235
Deaths Reported to Date	5,250	XX**	XX**	XX**	5,270	5,286	5,295
Tests Reported Today	14,217	XX**	XX**	XX**	39,930	8,450	14,545
Cumulative Tests to Date	4,712,103	XX**	XX**	XX**	4,752,033	4,760,483	4,775,028

*Data posted is always preliminary & subject to change. More information may become available as individual case investigations are completed. **LOCAL DATA MAY BE DIFFERENT FROM THE STATE WEBSITE DATA.** ** Weekend/holiday values reported on Monday.

SKILLED NURSING/ASSISTED LIVING/RESIDENTIAL CARE FACILITY – TRENDS

*Data Source: Orange County Medical Emergency Data System (OC-MEDS) – Updated 9/8/21

Calls to SNFs/Congregate Living with Primary Impressions: Fever/Cough, Influenza-like Illnesses
(Transports to ERCs Only - Last 30 Days)



*Data Source: California Department of Public Health (CDPH)

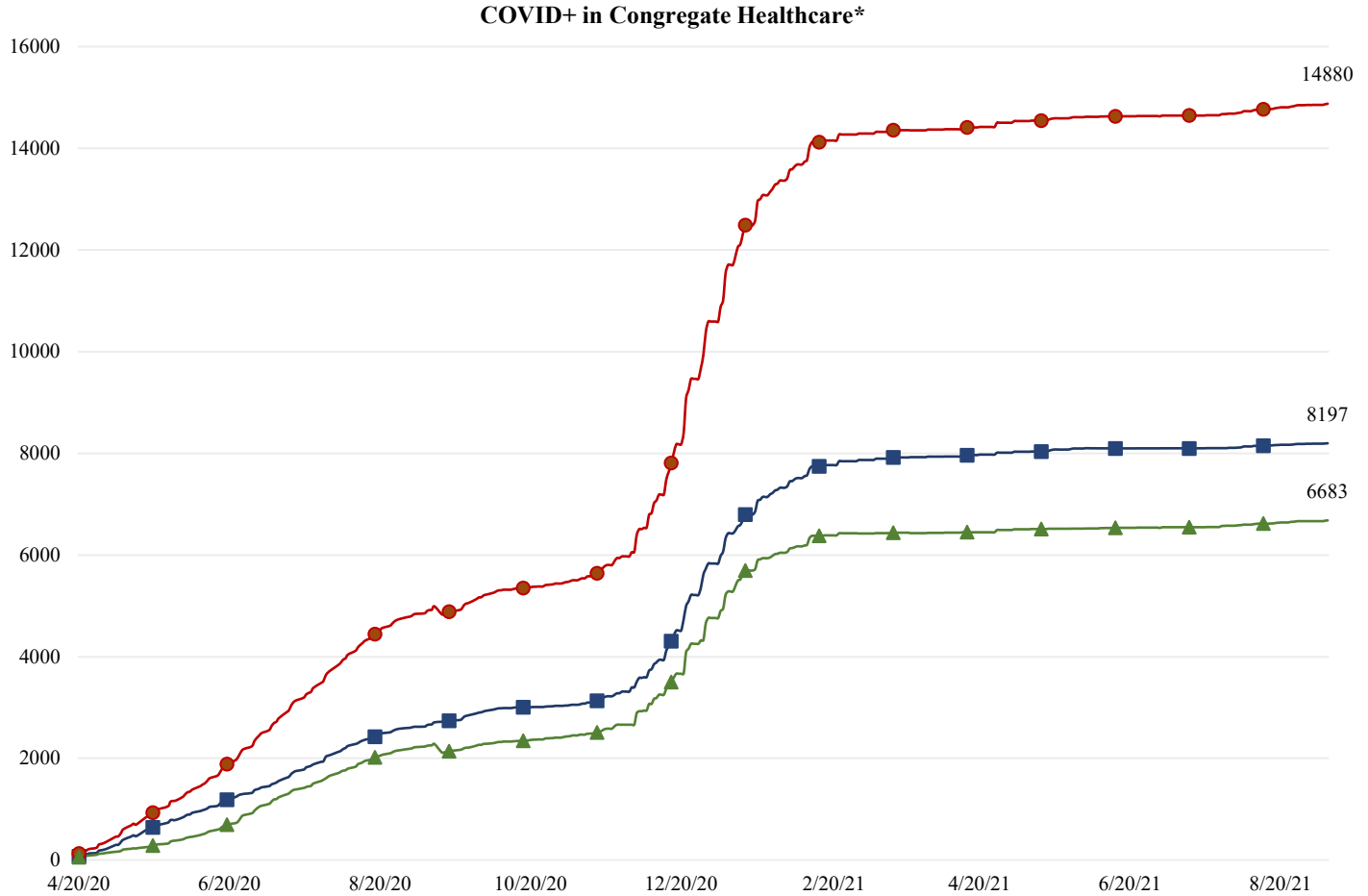
Skilled Nursing/Assisted Living/Residential Care Facility PPE / Ventilator Supplies Days on Hand
(66/73 SNFs reported)

Reporting Date: 9/8/2021	0 - 3 days	4 - 7 days	8-14 days	15+ days
N95 Masks	0	2	7	57
Surgical Masks	0	2	5	59
Eye Protection	0	2	6	58
Gowns	0	2	4	60
Gloves	0	2	6	58
Alcohol-Based Hand Sanitizer	0	1	6	59

*Data Source: Orange County Health Care Agency – Public Health – 9/9/21

NOTE: Decrease in the COVID + in staff seen on graph is due to data being cleaned and removing duplicates of those that work in multiple OC facilities or are contract staff and care for residents at multiple facilities.

Resident COVID+ ■ Staff COVID+ ▲ Total ●



*Data Source: Orange County Health Care Agency – Public Health

Current Facility Outbreaks (as of 9/9/21 1030)

An "Outbreak" is two (2) or more confirmed cases of COVID-19 in facility occurring within 14 days.

Facility Type by Licensing Category, Count		Facility Name Alphabetical
Skilled Nursing Facility	2	Freedom Village Healthcare Center, Mission Capistrano Healthcare Center
Elderly Assisted Living	5	Belmont Village Aliso Viejo, Brookdale Anaheim, Newport Bay, Sunrise Assisted Living At Tustin, Vivante On The Coast

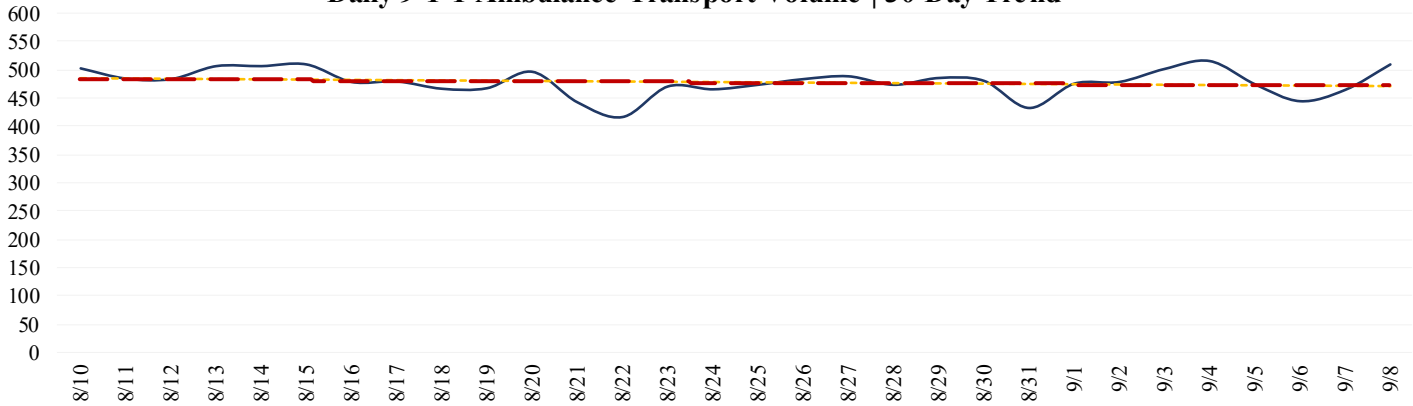


EMERGENCY MEDICAL SERVICES STATUS

*Data Source: Orange County Medical Emergency Data System (OC-MEDS)

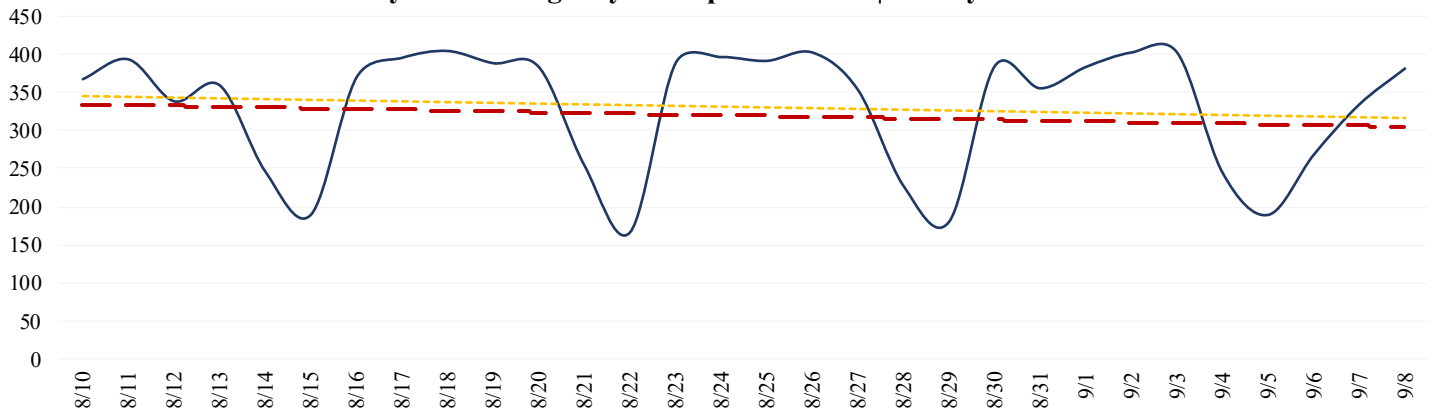
9-1-1 Ambulance Transports are leveling off and have had a couple days recently with > 500 transports each (Updated 9/9/21).

Daily 9-1-1 Ambulance Transport Volume | 30 Day Trend



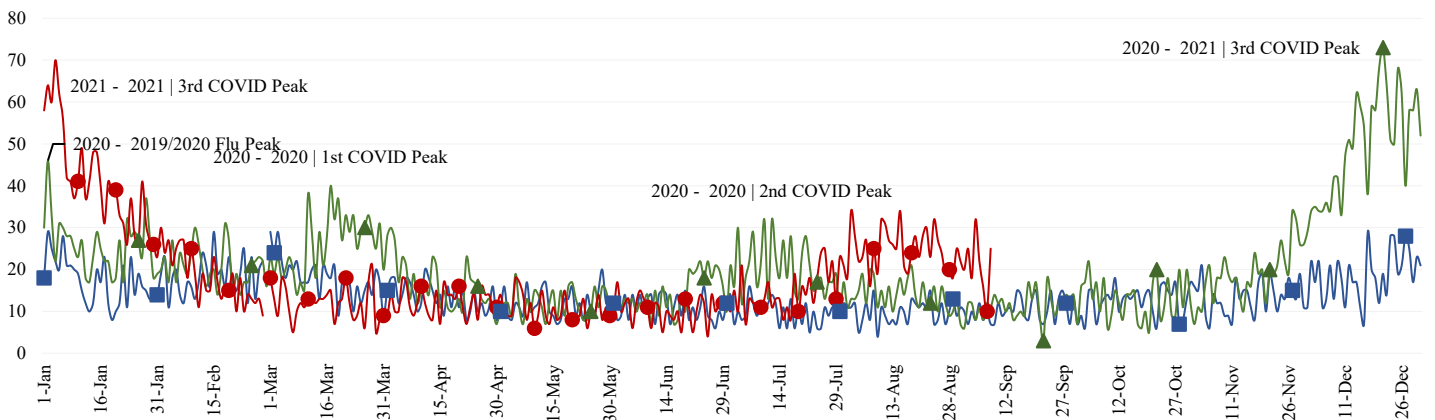
Non-emergency Ambulance Transports have been trending lower (Updated 9/9/21).

Daily Non-Emergency Transport Volume | 30 Day Trend



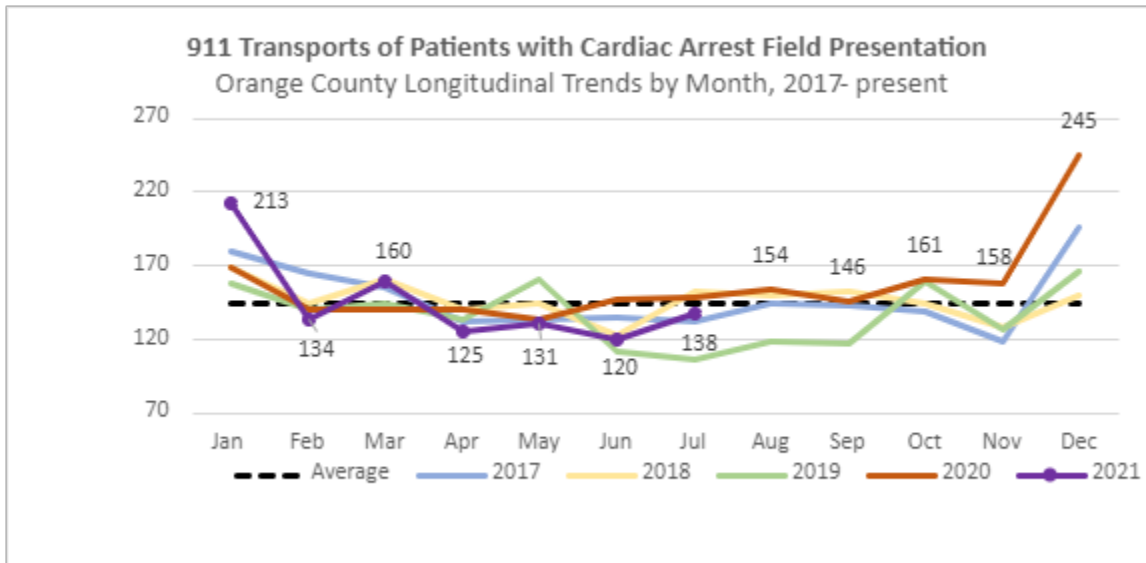
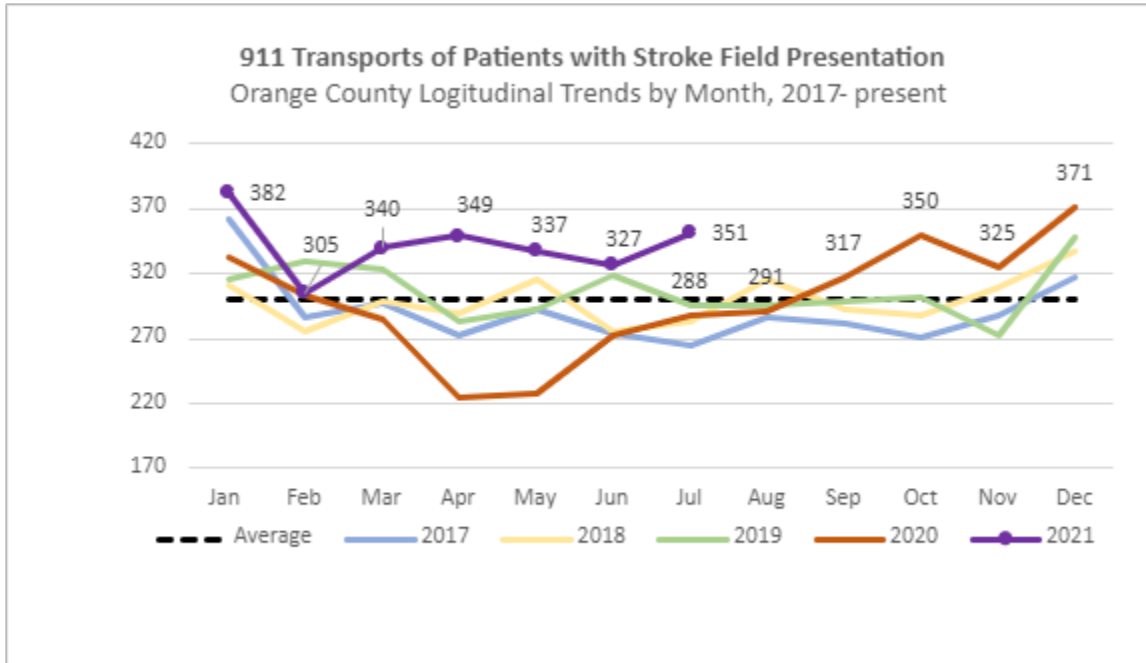
9-1-1 Transports of patients with Cold/Flu/ILI/COVID primary impressions continue to trend lower from a peak reached about three weeks ago. (Updated 9/9/21).

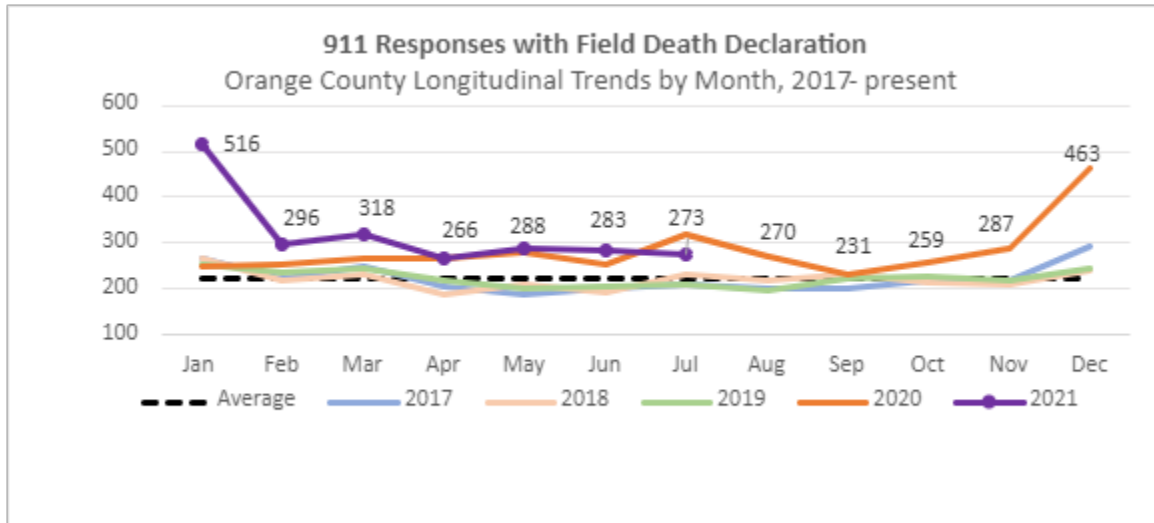
EMS Provider Impressions - Cold/Flu/ILI/COVID-19 Year Over Year Comparison (2019 ■, 2020 ▲, & 2021 ●)



911 EMS SYSTEM MONITORING

*Data Source: Orange County Medical Emergency Data System (OC-MEDS)





Summary Data Table for Chart, “911 Responses with Field Death Declaration”

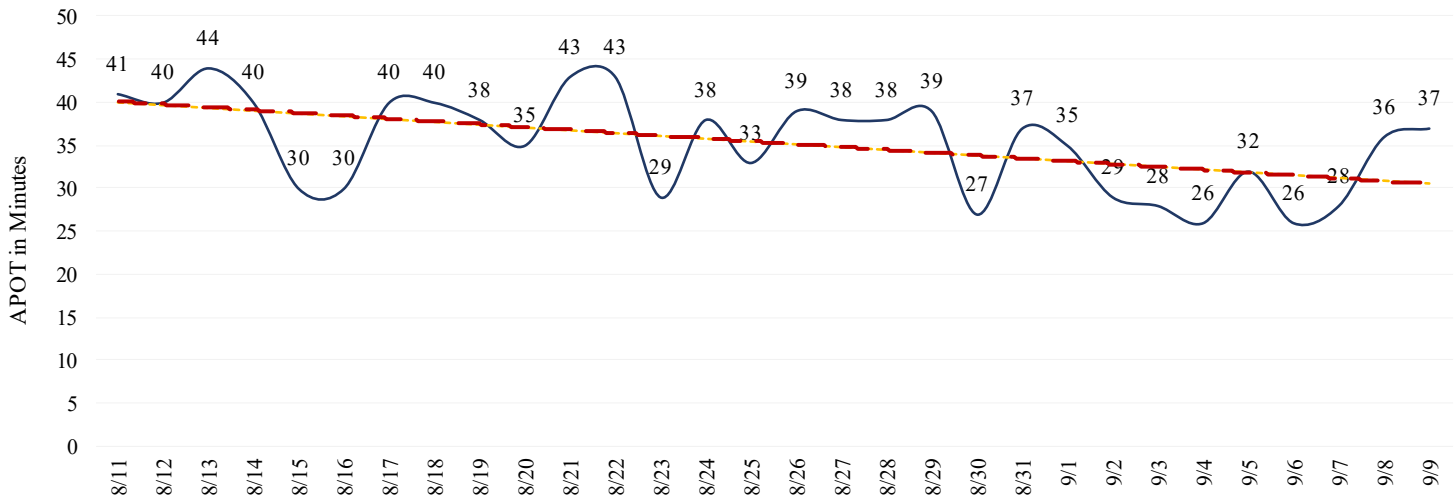
	2017	2018	2019	2020	2021
January	268	267	254	250	516
February	224	216	235	254	296
March	248	233	245	265	318
April	206	186	220	265	266
May	186	210	202	281	288
June	201	190	205	254	283
July	211	233	208	320	273
August	201	218	195	270	
September	199	233	222	231	
October	217	213	227	259	
November	217	211	217	287	
December	294	242	246	463	
Total	2378	2410	2430	3399	

- Ambulance Patient Offload Time (APOT) is defined as the time the ambulance arrives at the receiving destination (wheels stop) to the time that the ambulance crew physically transfers the patient to the ED gurney. Last 24 hours: **Countywide - 37m46s since the report creation time (09/09/21 @ 0744). Countywide APOT continue to gradually decline, but the last two days have been > 30 minutes.**
- Thirteen (13) ERCs had APOT times greater than thirty (30) minutes.
- Five (5) ERCs had APOT times greater than sixty (60) minutes.

The chart below displays a daily trend over the last 30 days.

*Data Source: Orange County Medical Emergency Data System (OC-MEDS) – Updated 9/9/21

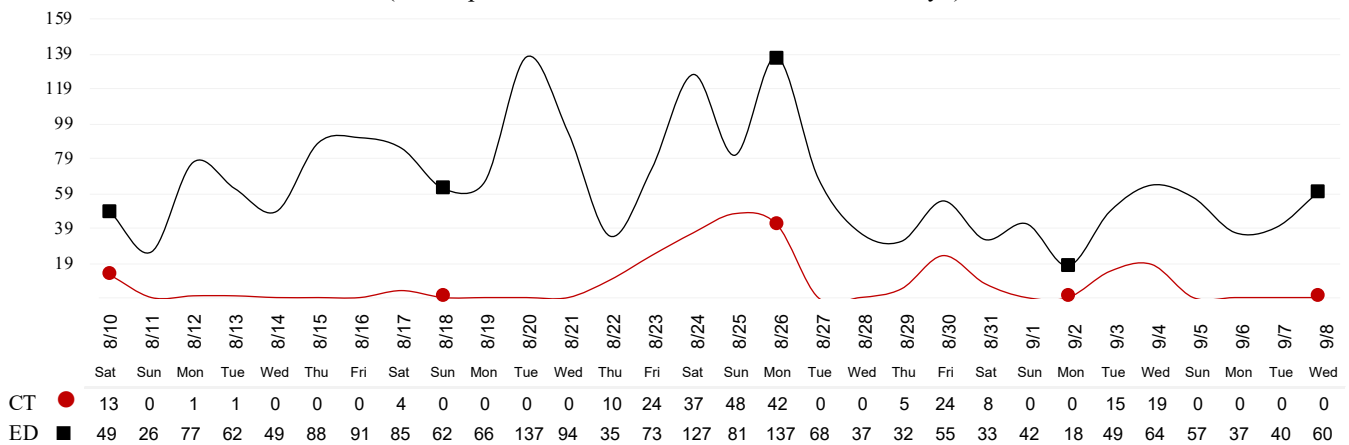
COVID 19 - APOT 90th percentile | Daily Trend



- Emergency Department (ED) Diversion & Computerized Tomography (CT) (ED closed to all ambulance transport due to no ED capacity or no CT available) for the last 30 days.

*Data Source: Orange County Medical Emergency Data System (OC-MEDS) – Updated 9/8/21

Hours of Diversion per 24-Hour Period
 (25 Hospitals, rounded to nearest hour - Last 30 Days)



26): Anaheim Regional, Anaheim Global, Chapman Global, CHOC, CHOC at Mission, Foothill, Fountain Valley, Garden Grove, Hoag-Irvine, Hoag-Newport Beach, Huntington Beach, Kaiser-Anaheim, Kaiser-Irvine, La Palma, Los Alamitos, Mission –Laguna Beach, Mission-Mission Viejo, Orange Coast Memorial, Orange County Global, Placentia Linda, Saddleback Memorial, Saint Jude, South Coast Global, St. Josephs, UCI, West Anaheim

*Data Source: California Department of Public Health (CDPH) – Snowflake server

Current Snowflake Data Dictionary may be found at:

https://www.calhospital.org/sites/main/files/file-attachments/data_dictionary_cha_covid_tracker_4-17-20.pdf

33 HOSPITALS

Date	Census All System	Occupancy % System	COVID+ Hospitalized System	COVID+ Hospitalized ICU Only (Adult & Peds)	% COVID+ hospitalized of ICU Occupied (Adult & Peds)	ICU Occupied (Adult & Peds)**	ICU Available (Adult & Peds)***	% ICU Available (Adult & Peds)****	ICU by Patient Age Group						% Ventilators Available
									Adult Occupied	Adult Available	Adult % Available	Pediatric Occupied	Pediatric Available	Pediatric % Available	
8/26	4049	73%	592	132	28%	480	141	23%	444	116	21%	36	25	41%	69%
8/27	4056	74%	549	121	25%	475	150	24%	438	126	22%	37	24	39%	68%
8/28	3997	73%	545	136	29%	472	144	23%	434	121	22%	38	23	38%	68%
8/29	3896	72%	546	139	30%	462	152	25%	428	125	23%	34	27	44%	67%
8/30	3820	70%	556	150	34%	447	160	26%	413	133	24%	34	27	44%	67%
8/31	3878	74%	534	149	33%	455	153	25%	422	125	23%	33	28	46%	67%
9/1	3887	73%	521	143	31%	467	147	24%	438	115	21%	29	32	52%	67%
9/2	3979	73%	500	138	29%	469	152	24%	445	115	21%	24	37	61%	66%
9/3	3945	73%	483	128	28%	455	150	25%	428	116	21%	27	34	56%	67%
9/4	3829	72%	488	126	29%	435	154	26%	411	117	22%	24	37	61%	67%
9/5	3812	71%	478	128	29%	446	151	25%	419	117	22%	27	34	56%	65%
9/6	3776	70%	466	128	28%	454	147	24%	424	116	21%	30	31	51%	65%
9/7	3638	69%	446	135	30%	455	162	26%	426	130	23%	29	32	52%	64%
9/8	3822	72%	432	132	29%	457	158	26%	424	130	23%	33	28	46%	64%

ICU occupied PREVIOUSLY ICU CDPH OC Occupied – CDPH combines occupied ICU adult beds and occupied ICU pediatric beds as a reporting metric on their COVID-19 Hospital dashboard. *ICU Available PREVIOUSLY ICU CDPH OC Available – CDPH subtracts the sum of occupied ICU adult beds and occupied ICU pediatric beds, from the sum of ICU total adult beds and ICU total pediatric beds to determine ICU available beds on their COVID-19 Hospital dashboard. ****%ICU AVAILABLE PREVIOUSLY % ICU CDPH OC Available – The sum of occupied ICU adult beds and occupied ICU pediatric beds, divided by the sum of ICU total adult beds and ICU total pediatric beds, as a percentage. *****%COVID+ hospitalized of ICU Occupied PREVIOUSLY % ICU Beds System Available – All ICU beds reported as available in Orange County, which includes Adult, PICU, and NICU, and any other ICU bed types.

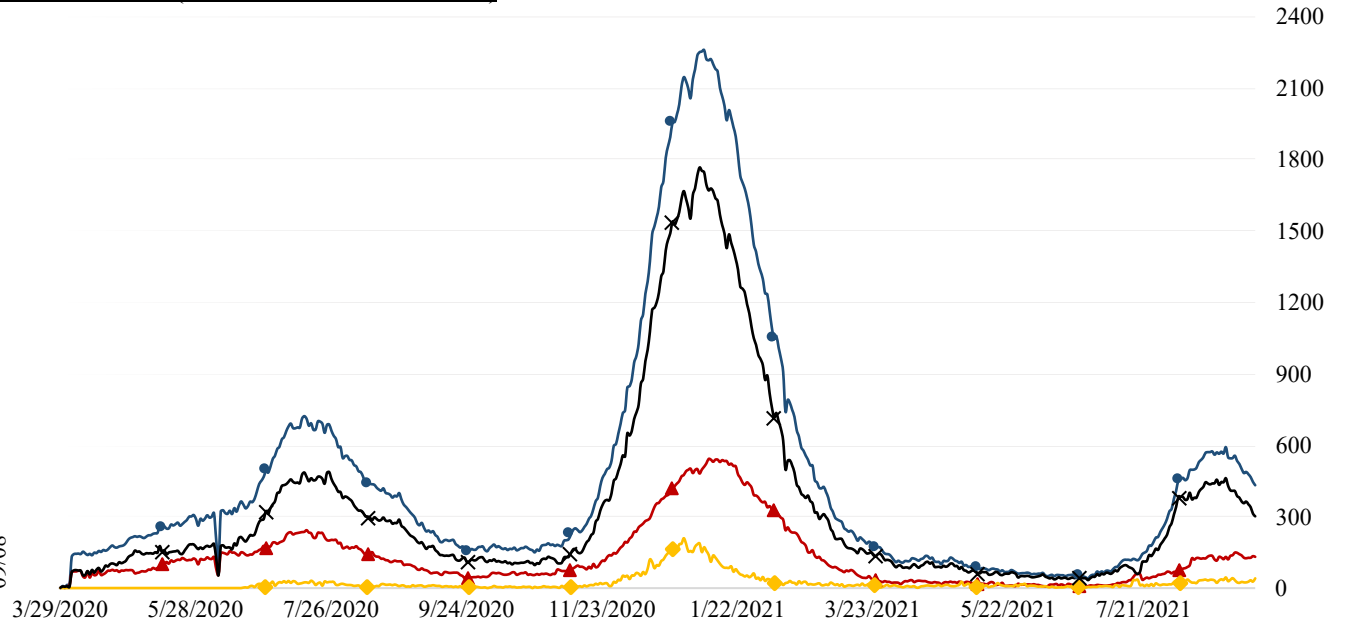
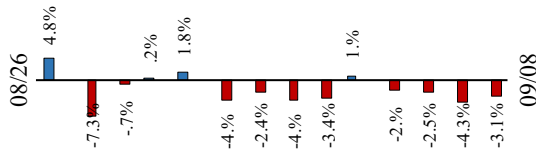
09/09/21

COVID 19 ORANGE COUNTY HOSPITAL SYSTEM DATA (CA SNOWFLAKE SERVER)

COVID+ CENSUS by BED TYPE | 09/08/2021

▲ ICU	132	-3	-2.2%	▼
◆ ED OVERFLOW	41	+14	51.9%	▲
X NON-ICU	300	-11	-3.5%	▼
● SYSTEM	432	-14	-3.1%	▼
3 Day 09-05-21	478	-46	-9.6%	
7 Day 09-01-21	521	-89	-17.1%	

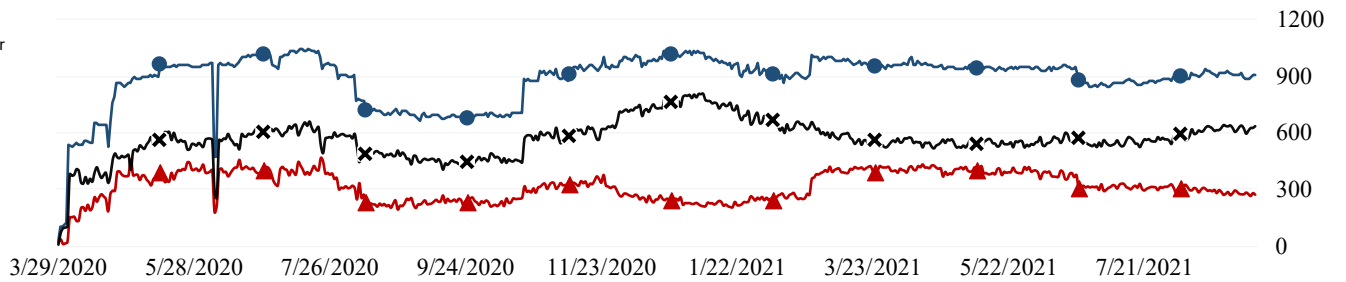
14 Day System COVID+ Change



ICU SYSTEM CENSUS | (09/08/21)

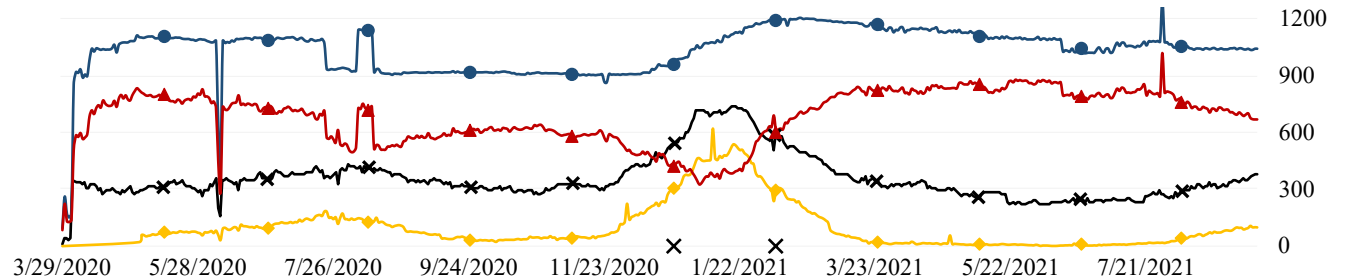
*includes adult, PICU, NICU & other

● SYSTEM - 911	
▲ AVAILABLE - 272 (29.9%)	<div style="width: 29.9%; height: 15px; background-color: red;"></div>
X OCCUPIED - 639 (70.1%)	<div style="width: 70.1%; height: 15px; background-color: black;"></div>



VENTILATORS | (09/08/21)

● SYSTEM - 1040	
▲ AVAILABLE - 666 (64.0%)	<div style="width: 64.0%; height: 15px; background-color: red;"></div>
X OCCUPIED - 374 (36.0%)	<div style="width: 36.0%; height: 15px; background-color: black;"></div>
◆ COVID - 98 (26.2%) *1 FROM ED	



09/09/21

COVID 19 ORANGE COUNTY HOSPITAL SYSTEM DATA (CA SNOWFLAKE SERVER)

7 DAY HISTORY BED OCCUPANCY | 09/08/2021

● **SYSTEM BEDS (INCLUDES SURGE)- 6848**

◆ **INPATIENT INCLUDING SURGE- 3880 (56.7%)**

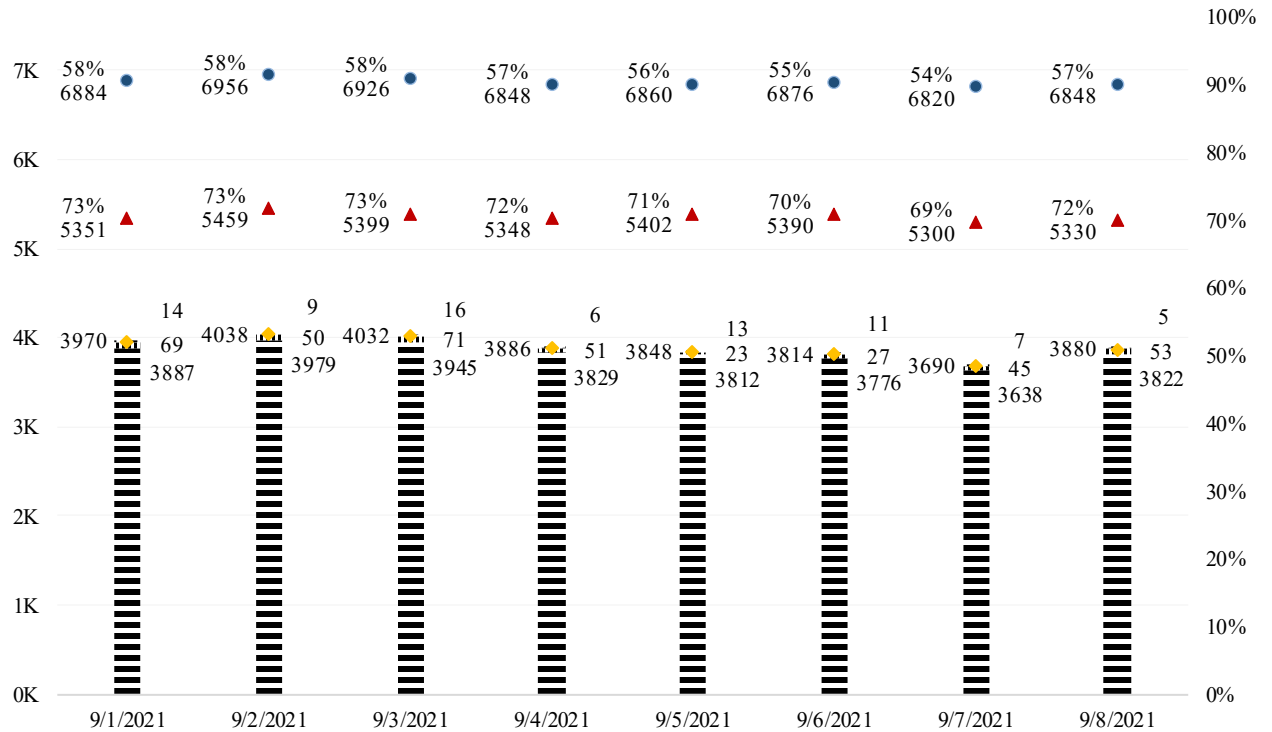


|||| **SURGE NON ICU INPATIENT- 53**

▨ **SURGE ICU INPATIENT- 5**

▲ **NON SURGE INPATIENT BEDS- 5330**

▨ **NON SURGE INPATIENT- 3822 (71.7%)**



SURGE CENSUS | 09/08/2021

● **SURGE BED SYSTEM- 964 (ICU- 87 | NON ICU- 877)**

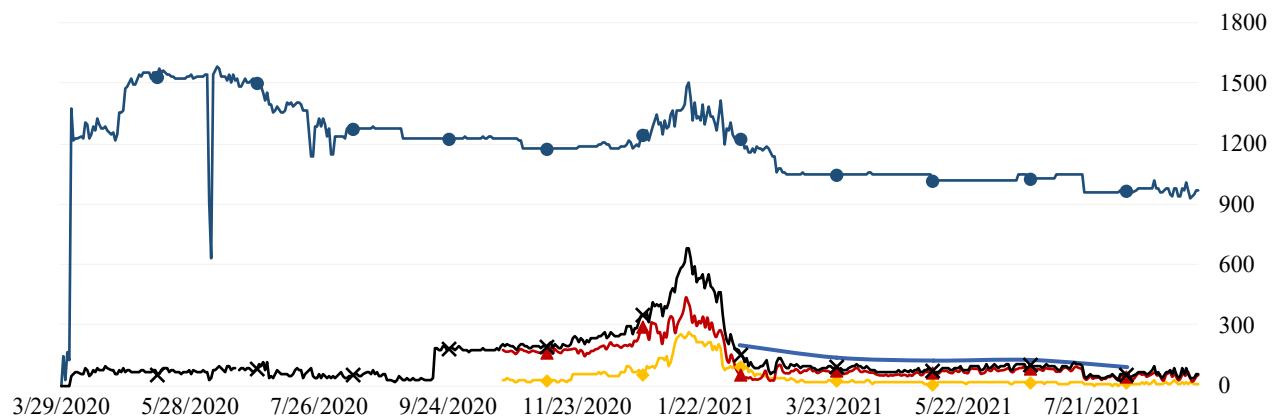
X **SURGE BED PATIENTS SYSTEM- 58 (6.0%)**



▲ **SURGE BED NON ICU PATIENTS- 53 (6.0%)**



◆ **SURGE BED ICU PATIENTS- 5 (5.7%)**



09/09/21

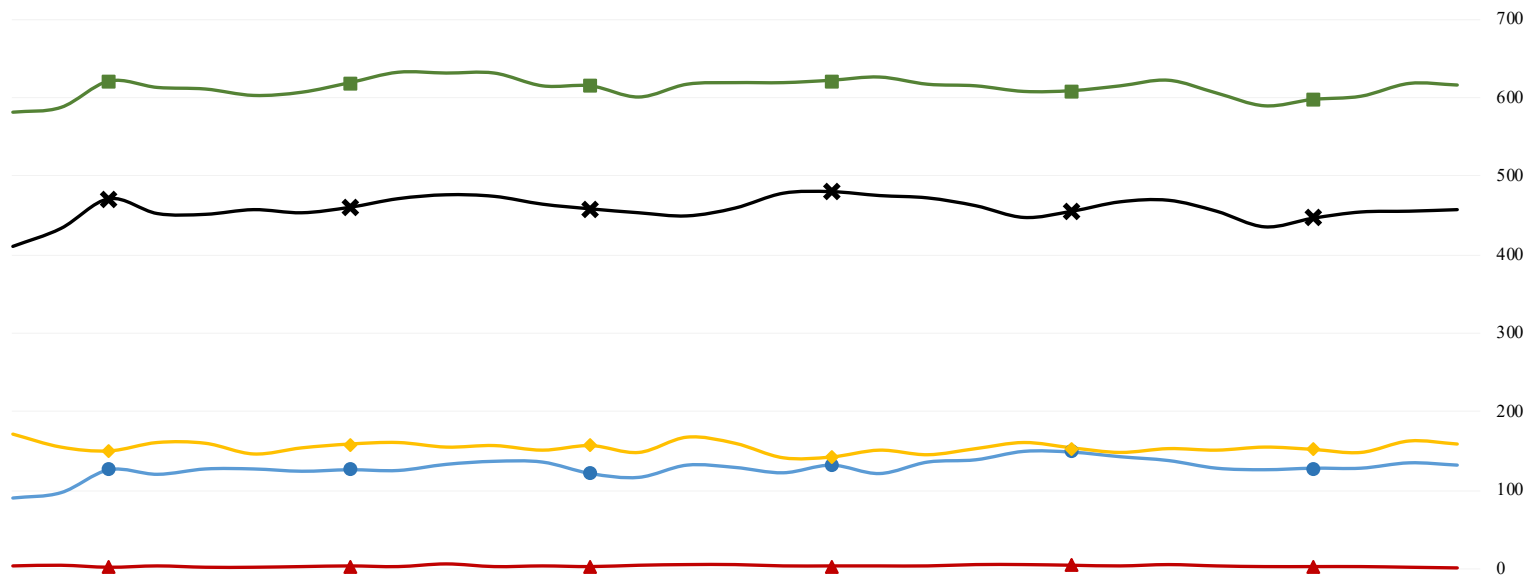
COVID 19 ORANGE COUNTY HOSPITAL SYSTEM DATA (CA SNOWFLAKE SERVER)

NON SURGE ICU BEDS: ADULT & PEDIATRIC COMBINED (08/10/21 - 09/08/21) | 33 ACUTE CARE FACILITIES REPORTING

ICU INSIGHTS

08-10-21 thru 09-08-21:

- Confirmed COVID+ in ICU increased by 37.5%
- ▲ Confirmed suspect in ICU decreased by -100.0%
- ✕ Occupied ICU increased by 5.5%
- ◆ Available ICU increased by 2.6%
- System ICU increased by 4.8%



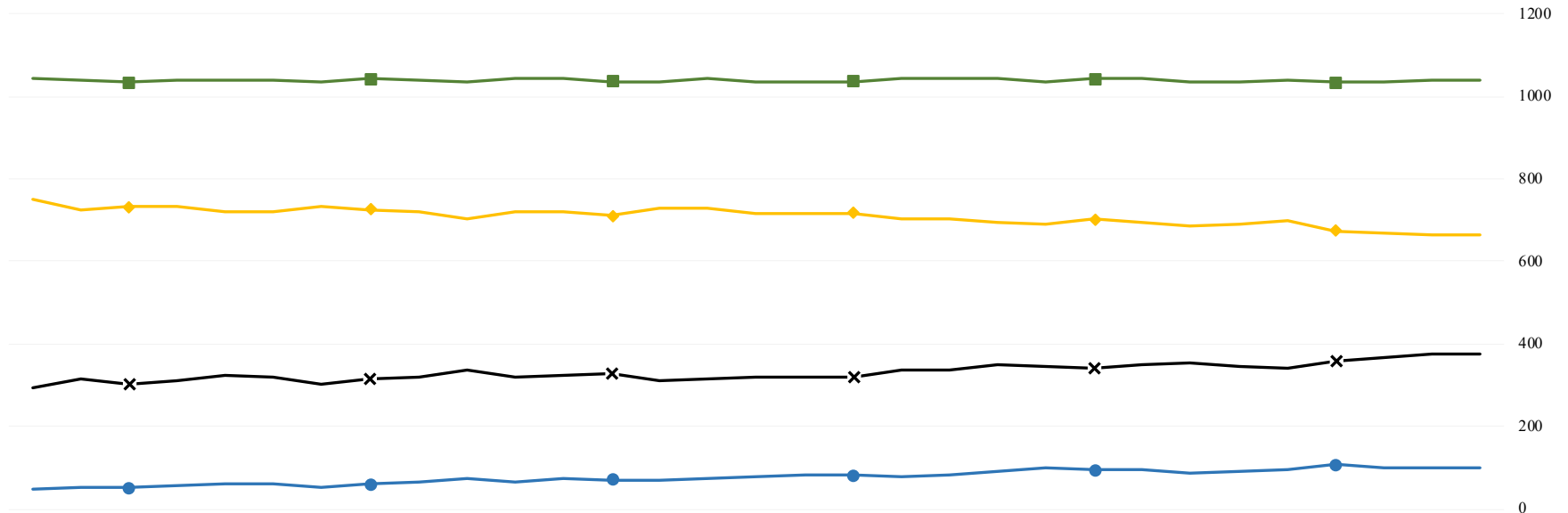
	8-10-21	8-11-21	8-12-21	8-13-21	8-14-21	8-15-21	8-16-21	8-17-21	8-18-21	8-19-21	8-20-21	8-21-21	8-22-21	8-23-21	8-24-21	8-25-21	8-26-21	8-27-21	8-28-21	8-29-21	8-30-21	8-31-21	9-1-21	9-2-21	9-3-21	9-4-21	9-5-21	9-6-21	9-7-21	9-8-21
● CONFIRMED	96	126	120	127	127	124	126	125	133	137	136	121	116	132	129	122	132	121	136	139	150	149	143	138	128	126	128	128	135	132
Adult	91	117	114	122	122	120	122	120	127	132	132	120	115	128	127	117	127	118	133	137	146	142	137	132	123	123	125	125	131	129
Peds	5	9	6	5	5	4	4	5	6	5	4	1	1	4	2	5	5	3	3	2	4	7	6	6	5	3	3	4	3	
▲ SUSPECTED	4	1	3	1	1	2	3	2	6	2	3	2	4	5	5	3	3	3	3	5	5	4	3	5	3	2	2	1	0	
Adult	3	1	3	1	1	1	3	2	6	2	3	2	4	5	5	3	3	3	3	4	5	4	3	5	3	2	2	1	0	
Peds	1	0	0	0	0	1	0	0	0	0	0	0	0	0	0	0	0	0	0	1	0	0	0	0	0	0	0	0	0	
✕ OCCUPIED	433	471	452	451	457	453	460	471	476	474	464	458	453	449	459	478	480	475	472	462	447	455	467	469	455	435	446	454	455	457
Adult	412	446	426	425	430	429	432	441	443	444	431	430	428	423	432	443	444	438	434	428	413	422	438	445	428	411	419	424	426	424
Peds	21	25	26	26	27	24	28	30	33	30	33	28	25	26	27	35	36	37	38	34	34	33	29	24	27	24	27	30	29	33
◆ SYSTEM AVL	154	149	160	159	145	153	158	160	154	156	150	156	147	167	159	140	141	150	144	152	160	153	147	152	150	154	151	147	162	158
Adult	114	113	125	124	111	116	125	129	126	125	122	123	111	132	125	114	116	126	121	125	133	125	115	115	116	117	117	116	130	130
Peds	40	36	35	35	34	37	33	31	28	31	28	33	36	35	34	26	25	24	23	27	27	28	32	37	34	37	34	31	32	28
■ SYSTEM TTL	587	620	612	610	602	606	618	631	630	630	614	614	600	616	618	618	621	625	616	614	607	608	614	621	605	589	597	601	617	615
Adult	526	559	551	549	541	545	557	570	569	569	553	553	539	555	557	557	560	564	555	553	546	547	553	560	544	528	536	540	556	554
Peds	61	61	61	61	61	61	61	61	61	61	61	61	61	61	61	61	61	61	61	61	61	61	61	61	61	61	61	61	61	61

COVID 19 ORANGE COUNTY HOSPITAL SYSTEM DATA (CA SNOWFLAKE SERVER)

VENTILATORS (08/10/21 - 09/08/21) | 33 ACUTE CARE FACILITIES REPORTING

VENTILATOR INSIGHTS
08-10-21 thru 09-08-21:

- Confirmed COVID+ patients on ventilators increased by 88.5%
- X Occupied ventilators increased by 18.7%
- ◆ System available ventilators decreased by -8.3%
- Total system ventilators decreased by -0.1%



	8-10-21	8-11-21	8-12-21	8-13-21	8-14-21	8-15-21	8-16-21	8-17-21	8-18-21	8-19-21	8-20-21	8-21-21	8-22-21	8-23-21	8-24-21	8-25-21	8-26-21	8-27-21	8-28-21	8-29-21	8-30-21	8-31-21	9-1-21	9-2-21	9-3-21	9-4-21	9-5-21	9-6-21	9-7-21	9-8-21
● CONFIRMED*	52	51	56	62	61	53	59	64	72	67	75	71	71	72	78	82	82	80	83	92	98	95	96	87	91	95	106	98	99	98
X OCCUPIED	315	302	309	322	321	303	316	320	335	320	323	326	309	315	321	320	319	338	338	349	346	339	348	353	344	342	360	367	374	374
◆ SYSTEM AVL	726	733	732	719	719	732	726	721	702	722	721	711	728	727	716	717	718	704	704	695	691	703	694	684	692	698	674	667	666	666
■ SYSTEM TTL	1041	1035	1041	1041	1040	1035	1042	1041	1037	1042	1044	1037	1037	1042	1037	1037	1037	1042	1042	1044	1037	1042	1042	1037	1036	1040	1034	1034	1040	1040

*Confirmed includes ED values

*Data Source: California Department of Public Health (CDPH) – Snowflake server

**Current Snowflake Data Dictionary may be found at:

https://www.calhospital.org/sites/main/files/file-attachments/data_dictionary_cha_covid_tracker_4-17-20.pdf

Acute Care Hospital PPE / Ventilator Supplies Days on Hand – (33/33 ACHs reported)

Reporting Date: 9/8/21*	30 days +	15-30 days	7-14 days	4-6 days	0-3 days	Not Reported
Ventilator Supplies**	8	6	17	1	1	0
N95 Masks**	30	3	0	0	0	0
Surgical Masks**	26	5	2	0	0	0
Face Shields**	26	3	2	2	0	0
Gloves**	22	5	6	0	0	0
Gowns**	22	7	4	0	0	0

Hospital Criteria for shifting to Crisis Care Strategies

LEGEND

STATUS

CRITERIA	STATUS		
	Normal Operations	Modified Operations	Modified Operations Assistance Needed
Rate of change in Hospitalized COVID-19 patients (doubling time over last 7 days)	Never to 4 weeks to double	4 weeks to 2 weeks to double	Less than 2 weeks to double
Absolute COVID-19 Census in the hospitals across Orange County	Less than 750	750-1500	>1500
Hospital census as a percentage of staffed capacity	<80%	80% to 90%	>90%
Hospital ICU census as a percentage of staffed ICU capacity	<70%	70% to 85%	>85%

Hospital Criteria for shifting to Crisis Care Strategies

9/8/21

STATUS

CRITERIA	STATUS		
	Normal Operations	Modified Operations Under Control	Modified Operations Assistance Needed
Rate of change in Hospitalized COVID-19 patients (doubling time over last 7 days)	Never to 4 weeks to double		
Absolute COVID-19 Census in the hospitals across Orange County	432		
Hospital census as a percentage of staffed capacity	72%		
Hospital ICU census as a percentage of staffed ICU capacity		74%	

AGENCY OPERATIONS CENTER / LOGISTICS SECTION

- The AOC is activated M-F **from 0900-1600 at Level II**; Warehouse Ops are M-F - 0900-1600.
- SCARCE Resources: Gloves, Syringes, Needles

Inventory Report 5/24/21 - 9/7/21

Logistics Daily Units Distributed 9/4 - 9/7/21

N95 Mask	60
Surgical Mask	0
Gown	0
Gloves	0
PPE-Suit	0
Face Shields/Eye Protection	0
Hand Sanitizer	0
Other	634
Total Units	694

Medical Supply/Equipment Total Units Distributed

N95 Mask	430,300
Surgical Mask	405,610
Gowns	675,110
PPE-Suit	1,000
Gloves	2,264,500
Eye Protection	54,676
Hand Sanitizer	7,675
Other Items	618,726
Total Units	4,457,597

Resource Requests - Updated 9/9/21 at 0700

Received ■ Filled ●

