



**PLACENTIA FIRE & LIFE SAFETY DEPARTMENT  
LYNCH EMERGENCY MEDICAL SERVICES  
FY 2020-21 INAUGURAL REPORT**



## A Message From the Chief

It is with great pride that I present to you, the inaugural Placentia Fire and Life Safety Department and Lynch Emergency Medical Services annual report. Inside, you will find updates across the Department regarding personnel achievements, use of equipment, notable calls, and response times to emergency calls.

Thanks to the guidance and support of the City Council, City Administrator Arrula, and other invested community stakeholders, the Placentia Fire and Life Safety Department is happy to celebrate its milestone achievement as we completed our first year as a Department.

With our partners at Lynch EMS, we have been working seamlessly together to continue to provide quality service to Placentia and its residents.

Throughout our inaugural year, we have had many successes and challenges: a Home Town Hero in Mason Ochoa, a worldwide pandemic, and several devastating community incidents.

Through these challenges, the personnel of the Placentia Fire and Life Safety Department have continued to exude professionalism, compassion, and generosity to the Placentia community.

J. Pono Van Gieson  
Fire Chief

# City Officials



Craig S. Green  
Mayor  
District 2



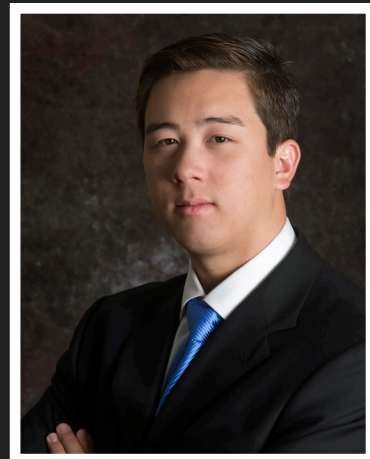
Chad P. Wanke  
Mayor Pro Tem  
District 4



Rhonda Shader  
Councilmember  
District 1



Ward L. Smith  
Councilmember  
District 5



Jeremy B. Yamaguchi  
Councilmember  
District 3

**City Clerk**  
Robert S. McKinnell

**City Treasurer**  
Kevin A. Larson

**City Administrator**  
Damien R. Arrula



# Department Organization



J. Pono Van Gieson  
Fire Chief



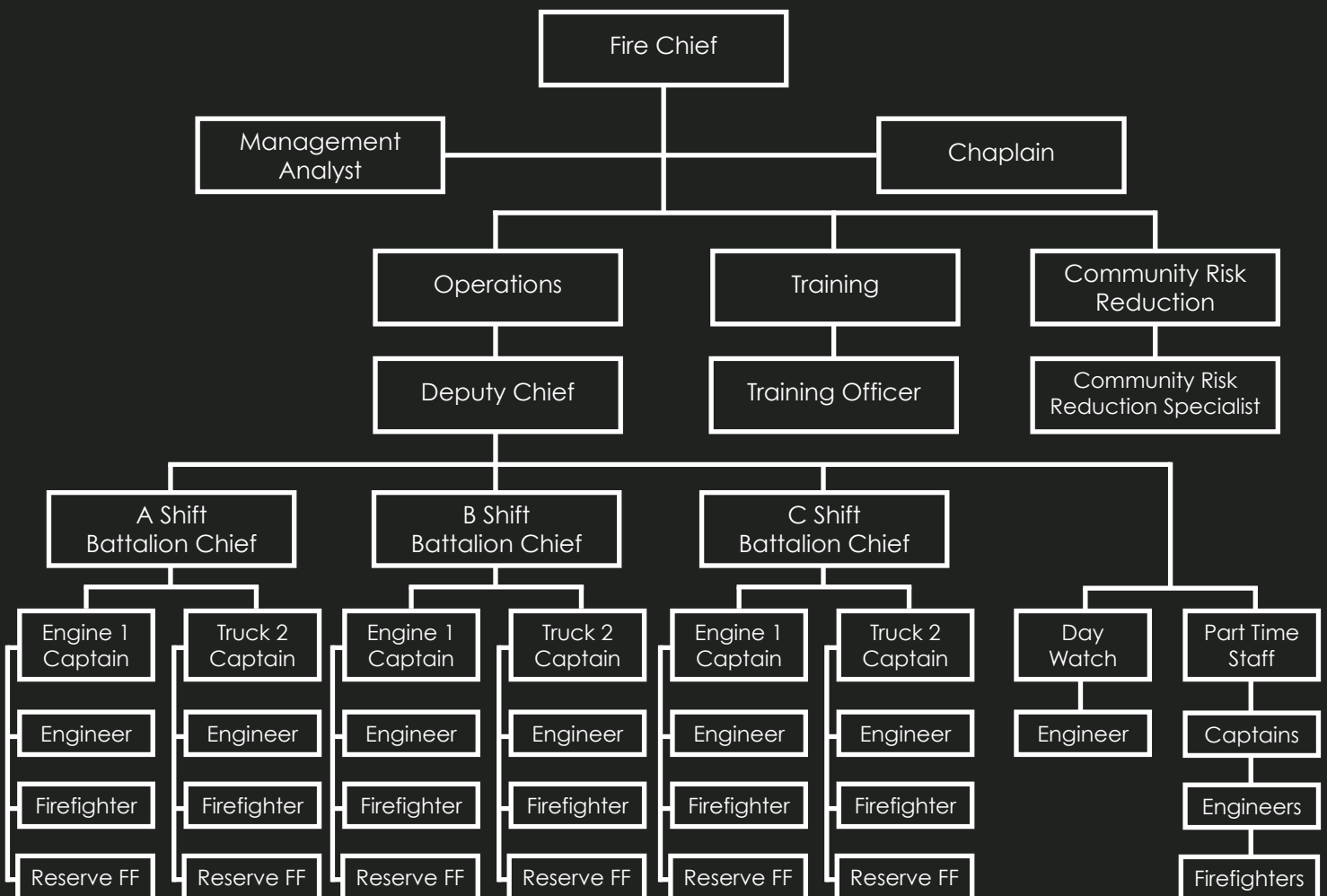
Michael Finnerty  
Battalion Chief  
A Shift



Jon Muir  
Battalion Chief  
B Shift



Jason Dobine  
Battalion Chief  
C Shift





**131**

**Fire Calls**  
Structure, Vegetation, Vehicle, &  
Other Outside



**207**

**Traffic Collisions**



**301**

**Service Calls**  
Smoke Investigation, Odor,  
& Public Assistance



**298**

**Mutual Aid & Police Assist**



**341**

**Other Calls**  
Alarms, Electrical Hazards, Elevator  
Incidents, & Weather Situations

**1,278**  
**Total Calls**

**6 min 8 sec**  
**Average Dispatch**  
**To Arrival Time**

# A Message From Lynch



On behalf of all of us at Lynch EMS, we are proud to join in this inaugural Placentia Fire and Life Safety Department and Lynch EMS Annual Report. We were honored to be selected to partner with the outstanding professionals in the Department and to provide Paramedic EMS services to the citizens of Placentia.

With the outstanding work of the members of the Fire Department, working shoulder to shoulder with our professional team, the dedication of our Paramedics and support staff, the unparalleled support of the City Council, City Administrator, and Staff, we achieved some notable success in our first year in Placentia. This report clearly highlights some of those remarkable achievements.

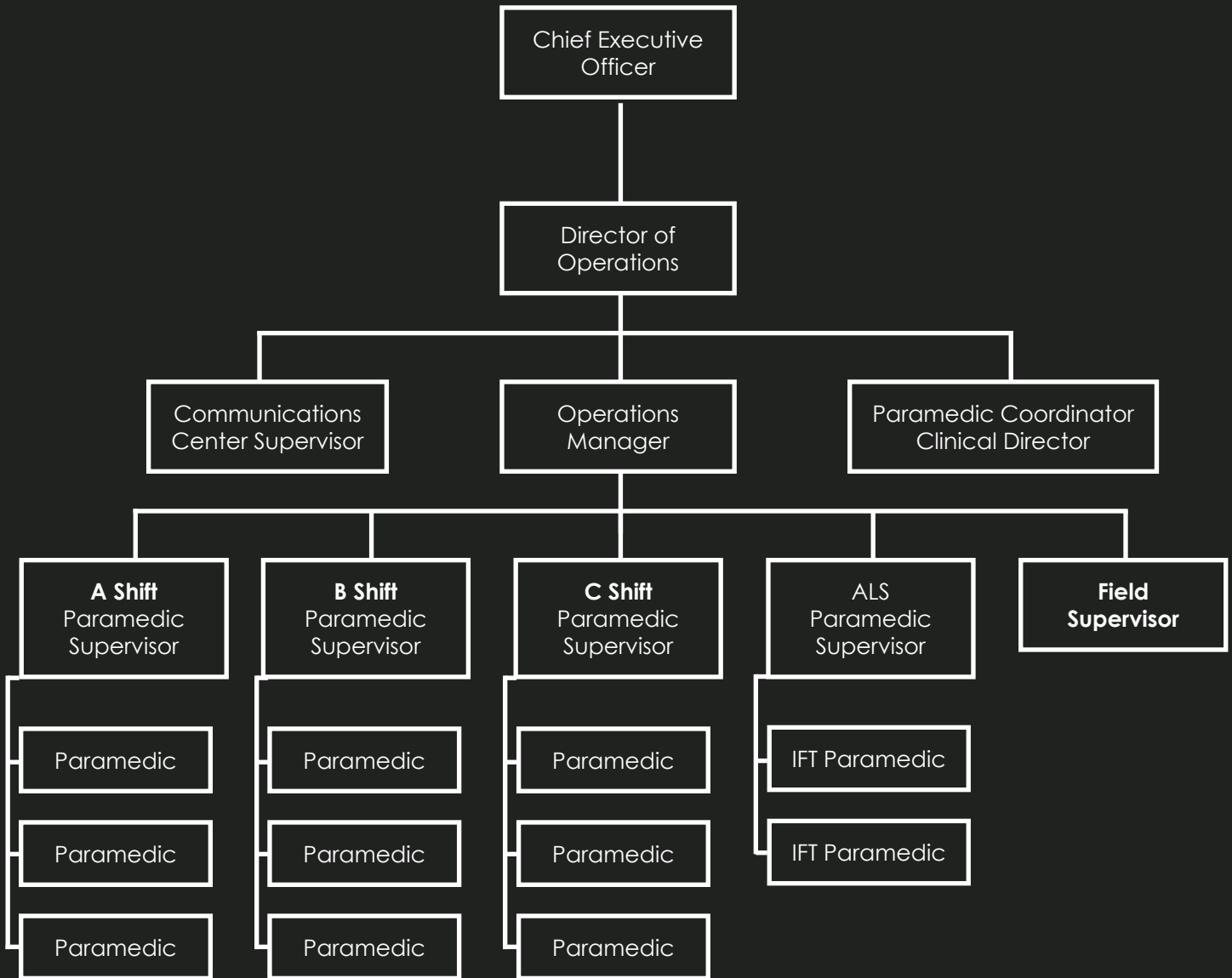
Most importantly, we were able to provide a high level of emergency medical service to a truly special community, while forging bonds along the way.

We look forward to continuing to serve the citizens of the city in partnership with the Placentia Fire and Life Safety Department and achieving measured results that can be a source of great pride for us and for the residents, businesses, and stakeholders in Placentia.

A handwritten signature in black ink, appearing to read "Walt Lynch".

Walt Lynch  
CEO / Lynch EMS

# Lynch EMS Staffing



# EMS Calls



**1,016**  
Breathing & Sick Person



**507**  
Falls



**441**  
Unconscious/Unknown Problem



**147**  
Bleeding/Traumatic Injuries



**263**  
Chest Pain & Cardiac Arrest



**97**  
Stroke



**174**  
Psychiatric, Abnormal  
Behavior, Overdose, & Poisoning



**440**  
Other Calls  
Assault, Choking, Burns, Diabetic  
Problems

**3,085**  
Total Calls

**5 min 29 sec**  
Average Dispatch  
To Arrival Time



# Comparison From Previous Service Provider

During our inaugural year as a Department, we received 4,361 calls for service. Response times and requests for Mutual Aid in to and out of Placentia are included and compared to the calls received in 2019 by our previous EMS and Fire provider.

2019 Previous Service Provider	2020-21 PFLSD & Lynch EMS	Percentage Change
<b>3,669</b> Total Calls	<b>4,363</b> Total Calls	<b>19%</b>
<b>9:30</b> Average Fire Response Times	<b>6:08</b> Average Fire Response Times	<b>-35%</b>
<b>9:30</b> Average EMS Response Times	<b>5:29</b> Average EMS Response Times	<b>-42%</b>
<b>806</b> Mutual Aid into Placentia	<b>128</b> Mutual Aid into Placentia	<b>-84%</b>
<b>457</b> Mutual Aid out of Placentia	<b>104</b> Mutual Aid out of Placentia	<b>-77%</b>

# Training

PFLSD staff received over 23,000 hours of training in the areas of:

- Fire Tactics & Strategy
- Hazardous Materials Response
- Emergency Medical Training
- Fire Hydraulics
- Firefighter Survival
- Urban Search & Rescue
- Leadership
- Wildland with US Forest Services
- Mercy Air



Lynch staff received training in the areas of:

- Incident Command Systems
- Basic Life Support
- Advanced Cardiac Life Support
- Pediatric Advanced Life Support
- Advanced Airway Competency
- IV Pump Training
- OCEMS Policy and Protocol
- Mercy Air
- Cardiac Arrest Science
- Mass Casualty Incidents
- Automobile Extraction
- Prehospital Trauma Life Support



# Accomplishments

## Fire & Life Safety Department

- Station renovations
- Transition and installation of Knox Boxes
- Opticom installed at 30 major intersections
- 1<sup>st</sup> Captains Academy
- Implementation of new software:
  - FIRSTDUE
  - WestNet Dispatch Alerting System
  - Target Solutions



## Lynch EMS

- 47% Cardiac Saves (17% higher than national average)
- 1st Private 911-ALS Provider in Orange County
- Reduction of Mutual Aid Requests into Placentia
- Dramatically improved response times
- Recognized by St. Jude hospital at Regional Emergency Advisory Committee (REAC) for excellent assessment and triage of stroke Patients & rapid transport of patient
- Recognized by CHOC at REAC for recognizing abnormal symptoms in a pediatric patient which was a previously undiagnosed congenital condition
- CAAS accreditation



# Goals & Objectives

## Fire & Life Safety Department

- Hire a Deputy Chief and Training Officer
- Become an accredited Fire Department with Center for Public Safety Excellence
- Move PFLSD Administration to Old City Hall
- Execute in-service agreements with colleges for training
- Explore developing Cadet/Explorer program
- Develop Department Strategic Plan

## Lynch EMS

- Establish Community Paramedicine
- Vial of Life program
- Enhance partnership with Placentia on community CPR and AED training programs
- Enhance partnership with Placentia on CERT and BERT training programs

Nearly 1,500 hours dedicated to COVID-19 response in Orange County by City of Placentia personnel

- Operation Independence Day
- Super POD Vaccination Sites
- Navigation Center Vaccination Event
- EOC Meetings



# Community Outreach

Placentia is not only a pleasant place to live, it's a city that thrives on community connectivity and traditions. This sense of community service truly pushes our Department and our partners at Lynch EMS to provide the utmost care when serving your community.

Participated in over 50 community events:

- Drive-By Celebrations
- Hometown Hero Recognition
- Community Training Opportunities
- LOT 318 Memorial Day Celebration
- L.I.F.E. Files
- Social Media:
  - Facebook, Instagram, & Twitter





# “The People Are The City”





# GET CONNECTED

401 E. Chapman Ave | [placentia.org/fire](http://placentia.org/fire)  
Placentia, CA 92870 | 714-993-8135

