

**Orange County Emergency Medical Services
Medical Health Operational Area Coordination (MHOAC)**

Online at: <http://www.healthdisasteroc.org/ems/archive>

6/12/20

OVERVIEW OF CURRENT SITUATION (6/12/20 0730) Source: Johns Hopkins University & Medicine <https://coronavirus.jhu.edu/map.html>

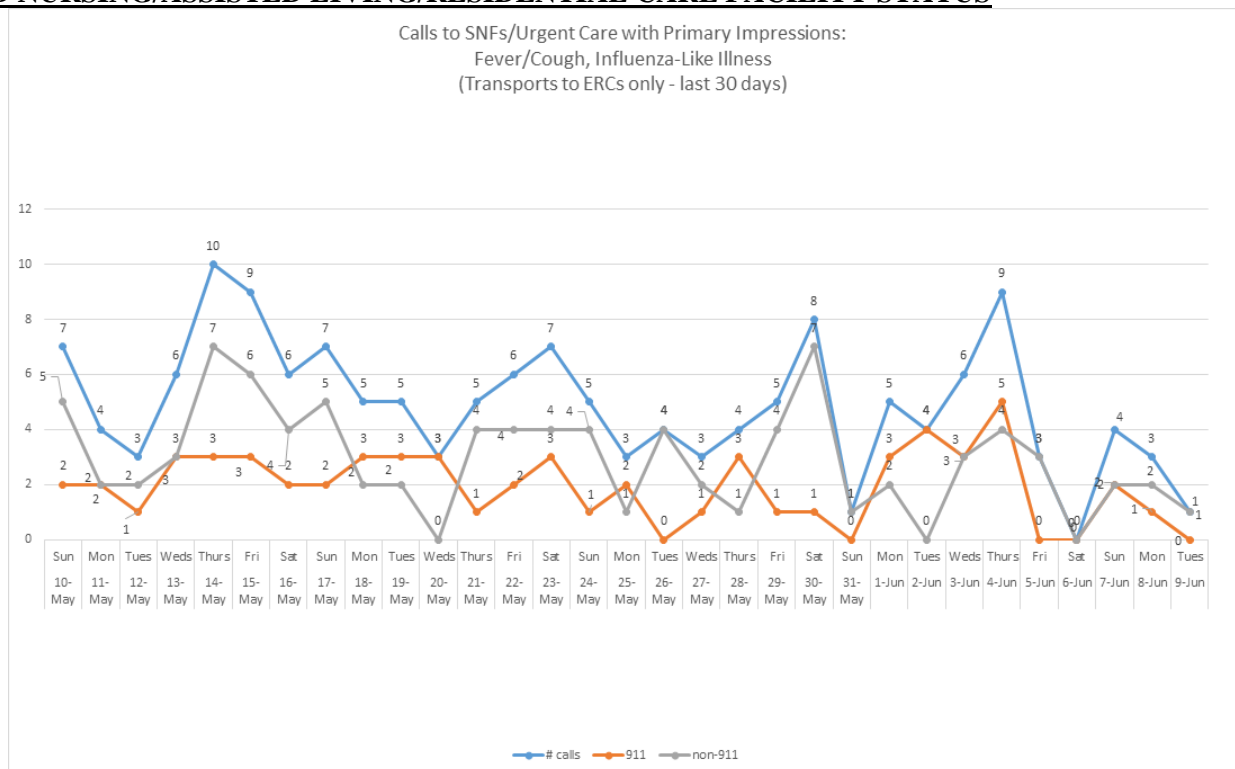
Cases / Deaths
 Worldwide: 7,547,702 / 422,136
 Nationwide: 2,026,073 / 113,883
 California: 143,513 / 4,934

PUBLIC HEALTH (as of 6/12/20 1000)

Orange County COVID-19 Summary* click for full details	Sat 6/6/20	Sun 6/7/20	Mon 6/8/20	Tue 6/9/20	Wed 6/10/20	Thu 6/11/20	Fri 6/12/20
Cases	7,261	7,379	7,490	7,579	7,726	7,986	8,153
Deaths	176	177	177	185	198	202	210
Tests Reported Today	4,394	3,262	2,985	2,576	2,820	3,092	668
Cumulative Tests to Date	158,895	162,157	165,142	167,718	170,538	173,630	174,298

**Data posted is always preliminary & subject to change. More information may become available as individual case investigations are completed.*

SKILLED NURSING/ASSISTED LIVING/RESIDENTIAL CARE FACILITY STATUS



Reporting Date: 6/11/20 (72 SNFs reported)	Skilled Nursing Facility PPE – DAYS ON HAND*			
	0 - 3 days	4 - 7 days	8-14 days	15+ days
N95 Masks	2	9	18	42
Surgical Masks	1	8	16	46
Eye Protection	0	9	18	44
Gowns	0	10	20	41
Gloves	0	10	19	42
Alcohol-Based Hand Sanitizer	4	10	14	43

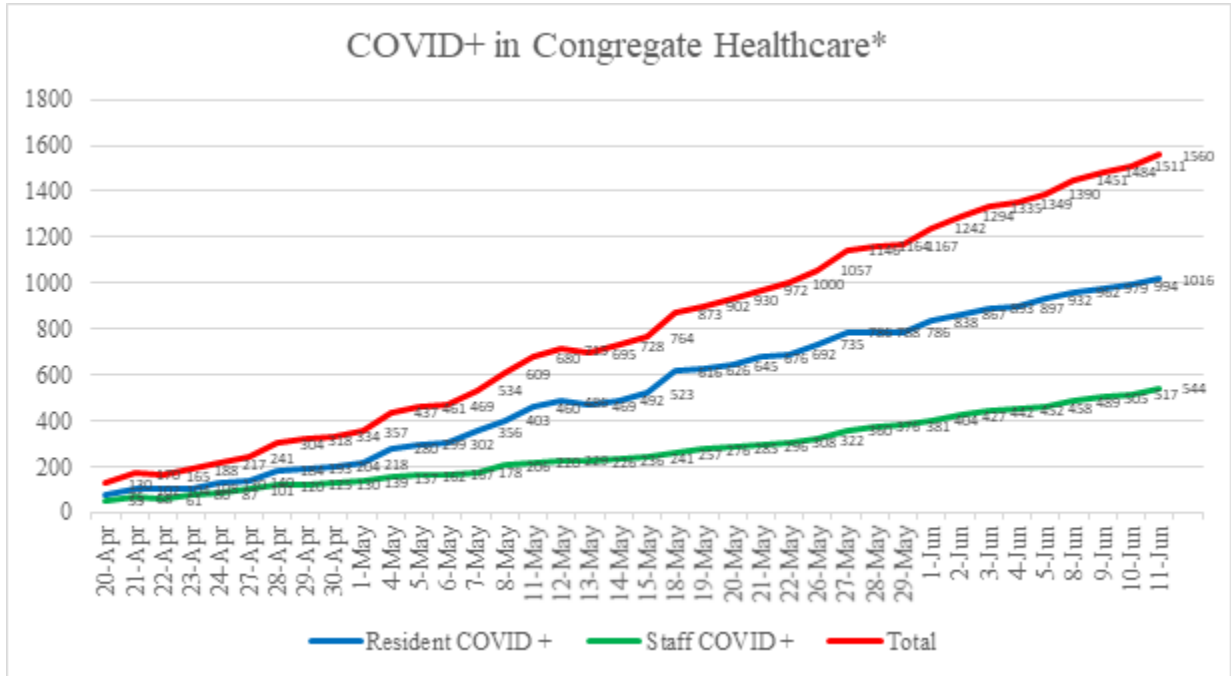
- 75% (57) SNFs have received 14-days of PPE from COUNTY STOCKPILE; Awaiting report on FEMA PPE

**Orange County Emergency Medical Services
Medical Health Operational Area Coordination (MHOAC)**

Online at: <http://www.healthdisasteroc.org/ems/archive>

6/12/20

Local Data Set



*Also includes Outbreak non-health facilities: Assisted Living, Residential Care, Acute Psych

Facility Outbreaks (as of 6/11/20 1700)		
Facility Type	#	An "Outbreak" is two (2) or more confirmed cases of COVID-19 in facility residents occurring within 14 days.
Skilled Nursing	28	Advanced Rehab Center of Tustin, Alamitos West Health & Rehab, Anaheim Healthcare Center, Buena Vista Care Center, Country Villa Plaza, Coventry Court, French Park Care Center, Garden Grove Convalescent Hospital, Garden Park Care Center, Gordon Lane Care Center, Healthcare Center of Orange County, Kindred Brea SAU, Huntington Valley Healthcare Center, Laguna Hills Health & Rehab, Manor Care FV, Leisure Court Nursing Center, Orange Healthcare & Wellness, Orangegrove Rehab Hospital, Pacific Haven Healthcare Center, Palm Terrace, Park Anaheim Healthcare Center, Sea Cliff Healthcare Center, Seal Beach Health & Rehab, South Coast Post Acute, St. Edna Subacute & Rehab, The Hills Post Acute, West Anaheim Extended Care, Windsor Gardens Center of Anaheim
Assisted Living	6	Acacia Villa, ActivCare Yorba Linda, Brookdale Anaheim, Harbor Villa Care Center, Sunflower Garden, The Groves of Tustin
Care Home	2	Cambridge House, Kamstra

CDPH SNF Dataset

- CDPH SNF Dataset is a point-in-time snapshot of the skilled nursing facilities (SNFs) in California that have reported one or more confirmed COVID-19 cases, by either a resident or health care worker (HCW), within the previous 24 hrs

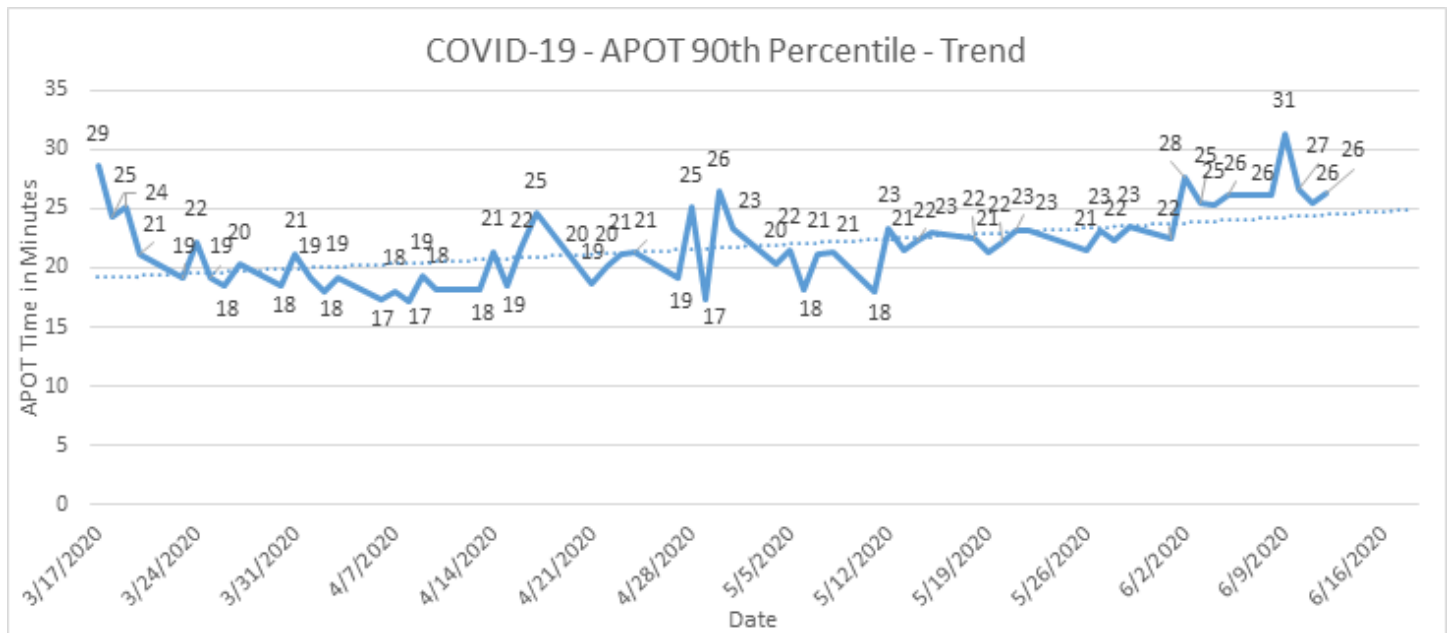
**Orange County Emergency Medical Services
Medical Health Operational Area Coordination (MHOAC)**

Online at: <http://www.healthdisasteroc.org/ems/archive>

6/12/20

Emergency Medical Services Status

- 9-1-1 ambulance transport volume has increased. Over the last week it is about 15% below normal average
- Non-emergency ambulance transports have increased but still remain well below normal at about 40% below average.
- Notable Emergency Department Diversion (ED closed to all ambulance transport due to no ED capacity) noted this past week – 6 ERCs in past few days & Thursday, 3 hospitals reported 3-16 hours of ED diversion reported
- Ambulance Patient Offload Time (APOT) is defined as the time the ambulance arrives at the receiving destination (wheels stop) to the time that the ambulance crew physically transfers the patient to the ED gurney. Last 24 hours: **Current Average APOT is 13m06s / Current 90th Percentile APOT is 26m33s.**
- 6 ERCs had APOT times greater than 30 minutes over the last 24 hours. Countywide APOT (90th) times have been trending higher and are now averaging 26-28 minutes over the last couple of weeks. The chart below displays a daily trend since COVID-19 began.



HOSPITAL STATUS

Hospitals (26): Anaheim Regional, Anaheim Global, Chapman Global, CHOC, CHOC at Mission, Foothill, Fountain Valley, Garden Grove, Hoag-Irvine, Hoag-Newport Beach, Huntington Beach, Kaiser-Anaheim, Kaiser-Irvine, La Palma, Los Alamitos, Mission-Laguna Beach, Mission-Mission Viejo, Orange Coast Memorial, Orange County Global, Placentia Linda, Saddleback Memorial, Saint Jude, South Coast Global, St. Josephs, UCI, West Anaheim

- Hospital occupancy increasing; surgeries/elected procedures up; no unmet PPE needs (except gowns)
- As of 6/8/20 1200, hospitals reported 22 out of county COVID + hospitalized patients.
- Since 5/31/20, Orange County Hospitals have accepted 21 COVID+ interfacility

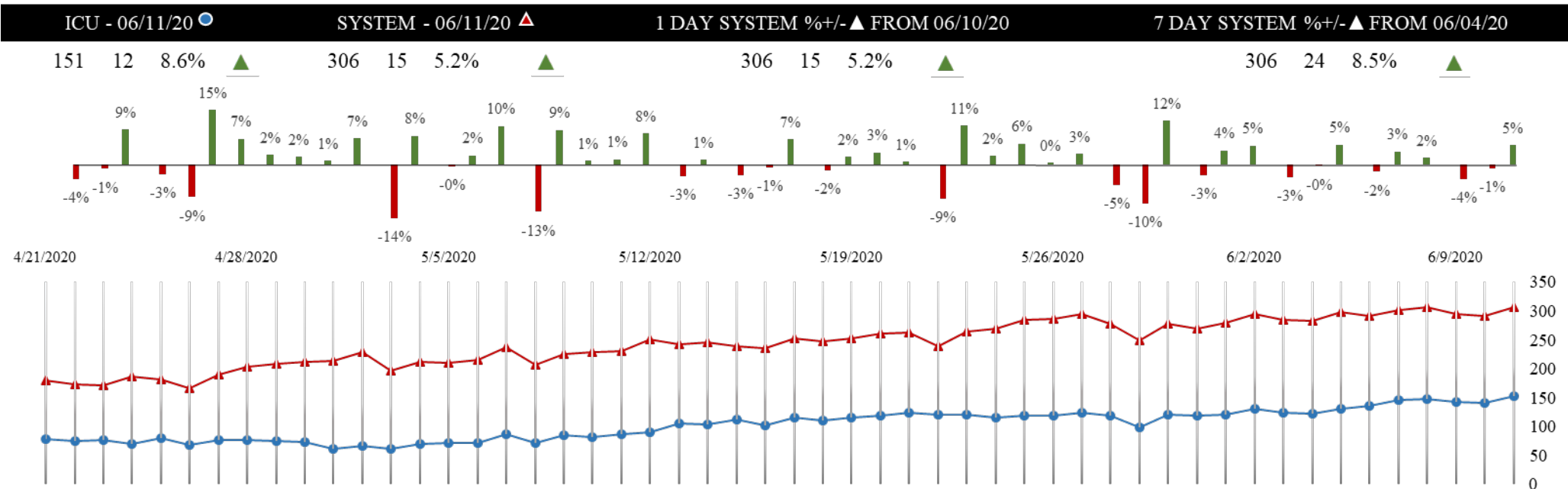
Imperial County Interfacility Decompression – El Centro Regional Medical Center COVID+ Transfers to OC Hospitals 5/31/20 – 6/7/20			
Receiving Facility	4/1/20 – 5/31/20	6/1/20 – 6/7/20	TOTAL ACCEPTED
Hoag Hospital Newport Beach	9	0	9
La Palma Intercommunity Hospital	0	3	3
Mission Hospital Mission Viejo	1	0	1
UC Irvine Medical Center	6	2	8
TOTAL ACCEPTED	16	5	21

Orange County Emergency Medical Services Medical Health Operational Area Coordination (MHOAC)

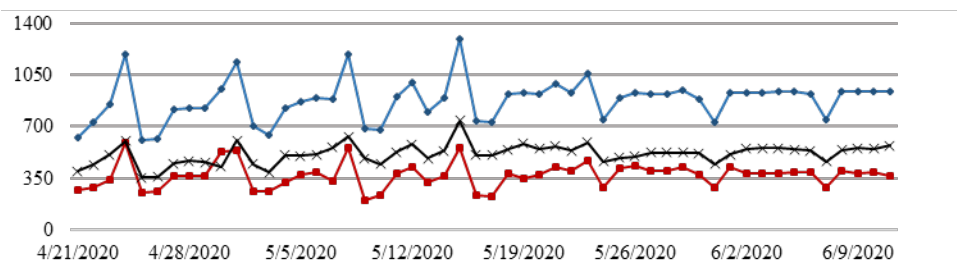
Online at: <http://www.healthdisasteroc.org/ems/archive>

6/12/20

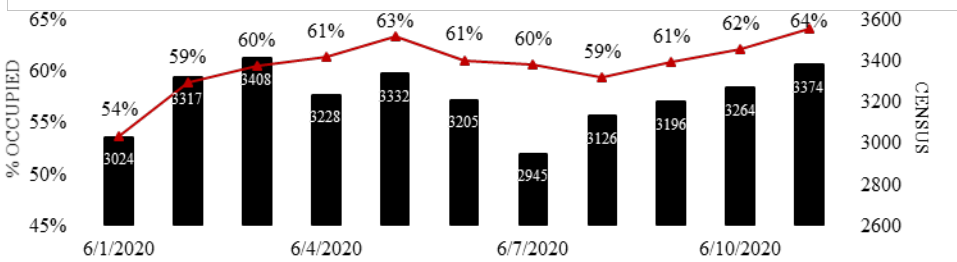
SYSTEM COVID POSITIVE (04/21/20 - 06/11/20) | 26 hospitals reporting



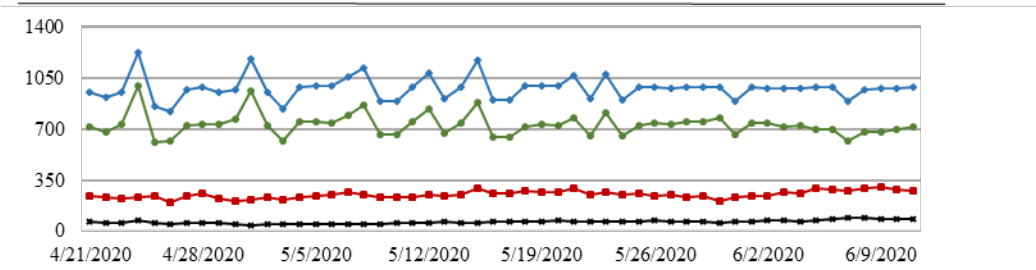
ICU BEDS | SYSTEM - 939 ● | AVAILABLE - 366 ▲ | OCCUPIED - 573 (61.02%) *



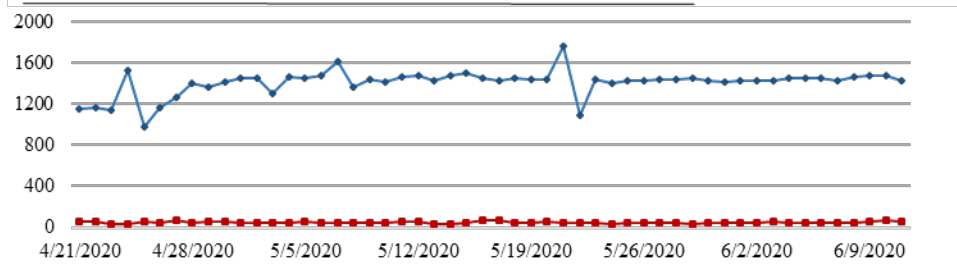
BED OCCUPANCY (06/11/20) | IN-PATIENT BEDS - 3374 (64.05%)



VENTILATORS | SYSTEM - 988 ◆ | AVAILABLE - 715 ● | SYSTEM IN USE - 273 ■ | COVID+ - 81 *



SYSTEM SURGE CAPACITY | SYSTEM - 1430 ◆ | OCCUPIED - 58 ■



**Orange County Emergency Medical Services
Medical Health Operational Area Coordination (MHOAC)**

Online at: <http://www.healthdisasteroc.org/ems/archive>

6/12/20

Reporting Date: 6/11/20 (33/33 ACHs reported)	Acute Care Hospital PPE – DAYS ON HAND			
	0 - 3 days	4 - 14 days	15+ days	Non Reported
N95 Masks	1	9	17	6
Surgical Masks	1	6	19	6
Face Shields	3	6	18	6
PAPR Hoods	7	7	8	11
Eye Protection	2	5	20	6
Gowns	1	9	17	6
Gloves	4	11	12	6

- On a routine basis, the MHOAC tracks daily hospitalizations, census, occupancy and PPE availability as well as reviews epidemiologic data (doubling time).
- The criteria in the table below serve as objective measures to identify the need for hospitals to shift to crisis care strategies (i.e. activate surge plans) & uses the following assumptions:
 - Increased pressure in hospitals & on the EMS system requires a shift to crisis care strategies
 - Low levels of PPE will come earlier than decreased capacity and cause an abrupt change in capacity.
 - Increased hospitalizations and low PPE could have a synergistic effect to reduce capacity.
 - Low levels of PPE is not just a marker of capacity but causes capacity issues.

Hospital Criteria for shifting to Crisis Care Strategies			
LEGEND			
CRITERIA	STATUS		
	Normal Operations	Modified Operations Under Control	Modified Operations Assistance Needed
Rate of change in Hospitalized COVID-19 patients (doubling time over last 7 days)	Never to 4 weeks to double	4 weeks to 2 weeks to double	Less than 2 weeks to double
Absolute COVID-19 Census in the hospital	Less than 500	500-750	>750
Hospital census as a percentage of capacity	<80%	80% to 90%	>90%
Supply of PPE available in the hospitals	>4 weeks	2 to 4 weeks	< 2 weeks

Hospital Criteria for shifting to Crisis Care Strategies			
6/12/20			
CRITERIA	STATUS		
	Normal Operations	Modified Operations Under Control	Modified Operations Assistance Needed
Rate of change in Hospitalized COVID-19 patients (doubling time over last 7 days)	35.1 days		
Absolute COVID-19 Census in the hospital	306		
Hospital census as a percentage of capacity	64%		
Supply of PPE available in the hospitals		2 to 4 weeks	

**Orange County Emergency Medical Services
Medical Health Operational Area Coordination (MHOAC)**

Online at: <http://www.healthdisasteroc.org/ems/archive>

6/12/20

AGENCY OPERATIONS CENTER / LOGISTICS SECTION

- AOC Activated at Level II; Hours of Operation M-W-F 0900-1600; Warehouse Ops M-F 0900-1600
- SCARCE Resources: N95, Gloves, Testing Kits, Wipes
- DEPLETED Resources: Gowns

Total Activity		
INQUIRIES	RR RECEIVED	RR FILLED
12,681	6,240	4,448 (71%)

Logistics Daily Units Distributed 6-10-20	
N95 Mask	2,320
Surgical Mask	15,000
Gown	3,550
Gloves	7,100
Eye Protection	4,900
Hand Sanitizer	785
Other	12,625
Total Units	46,280

Inventory Report February 18 to June 10, 2020	
Medical Supply/Equipment Total Units Distributed	
N95 Mask	1,875,653
Surgical Mask	729,318
Gowns	397,738
PPE-Suit	12,352
Gloves	361,600
Eye Protection	130,204
Hand Sanitizer	190,735
Other Items	132,970
Total Units	3,830,570

ALTERNATE CARE SITES

Fairview (COVID-19 +)		
Patient Census (as of 6/12/2020 12:30)	CURRENT	TOTAL
Orange County	3	15
LA County	3	12
Ventura County	0	1
Total patients CENSUS / TOTAL ACCEPTED	6	28
Patients Discharged		TOTAL
AMA		0
DISCHARGED		22
EXPIRED		0
TRANSFERRED		0