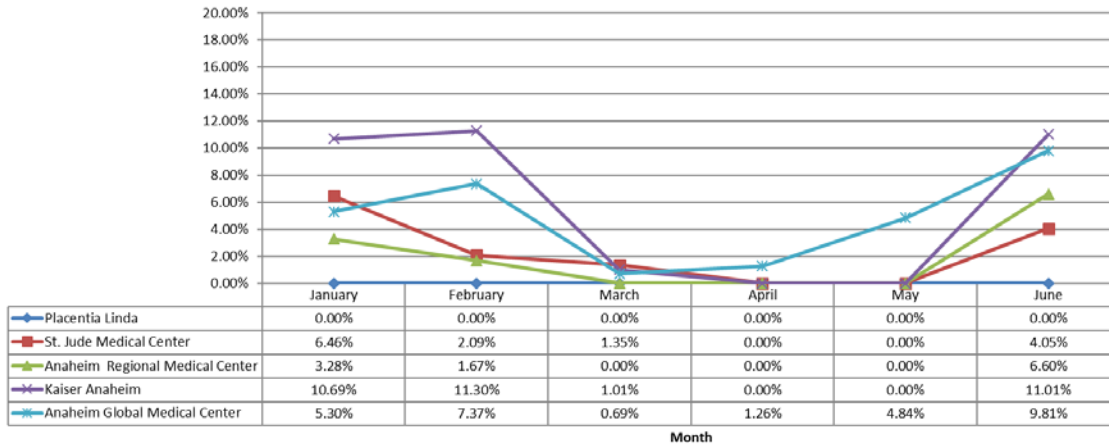




**Orange County
Emergency Medical Services
Diversion Report
January 1 to June 30, 2020**

Emergency Receiving Center Diversion- Percent of Time

North Area- 2020 - ERC Diversion



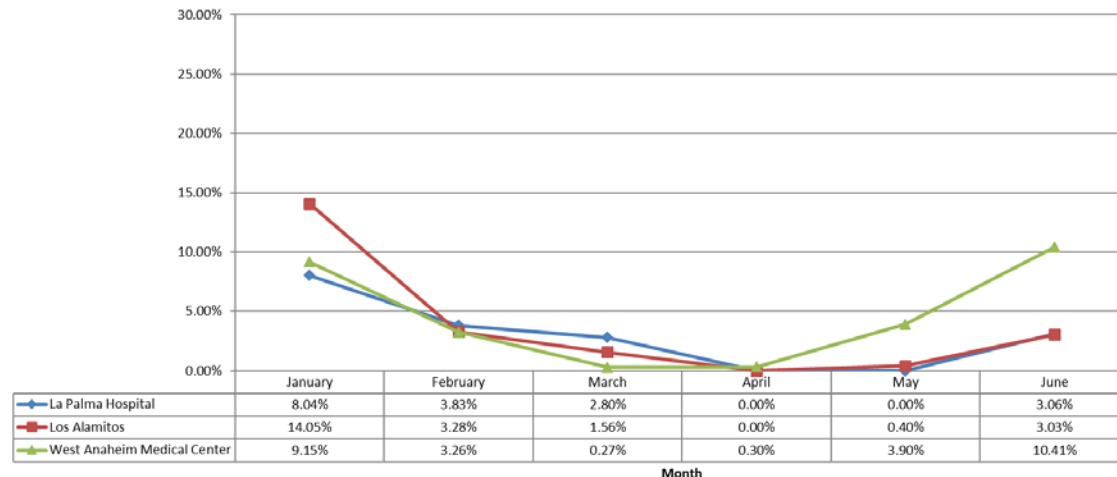
North Area Includes:

- Placentia Linda Hospital
- St. Jude Medical Center
- Anaheim Regional Medical Center
- Kaiser Anaheim
- Anaheim Global Medical Center

West Area Includes:

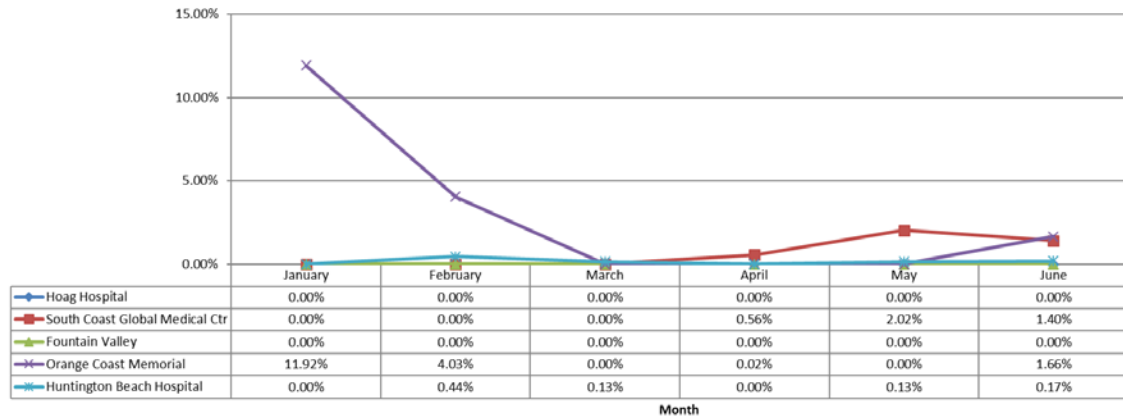
- La Palma Hospital
- Los Alamitos Medical Center
- West Anaheim Medical Center

West Area - 2020 - ERC Diversion



Emergency Receiving Center Diversion- Percent of Time

Coastal Area- 2020 - ERC Diversion



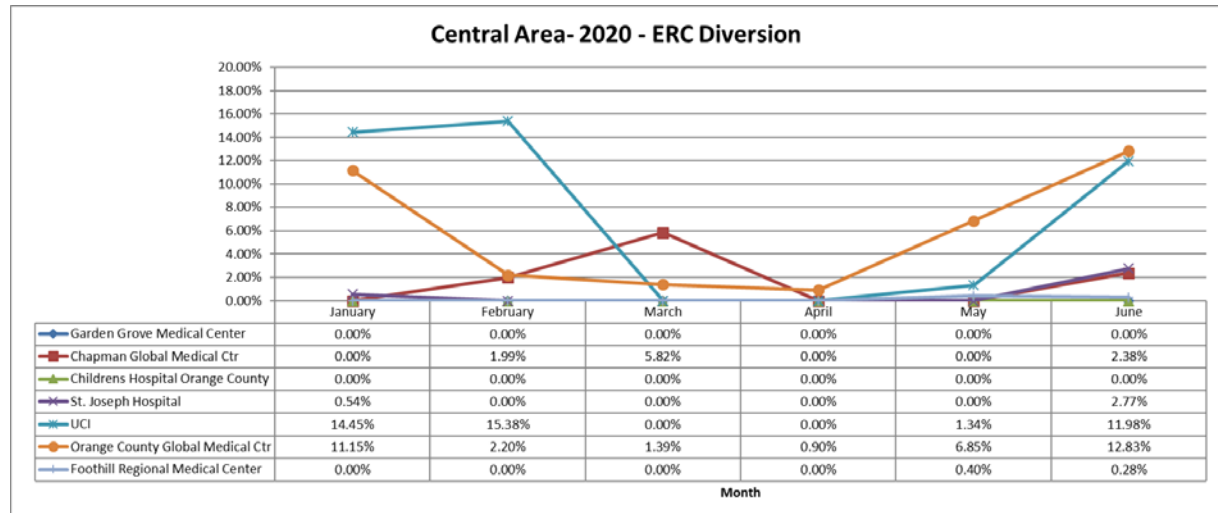
Coastal Area Includes:

- Hoag Hospital Newport Beach
- South Coastal Global Medical Center
- Fountain Valley Hospital
- Orange Coast Memorial Medical Center
- Huntington Beach Hospital

Central Area Includes:

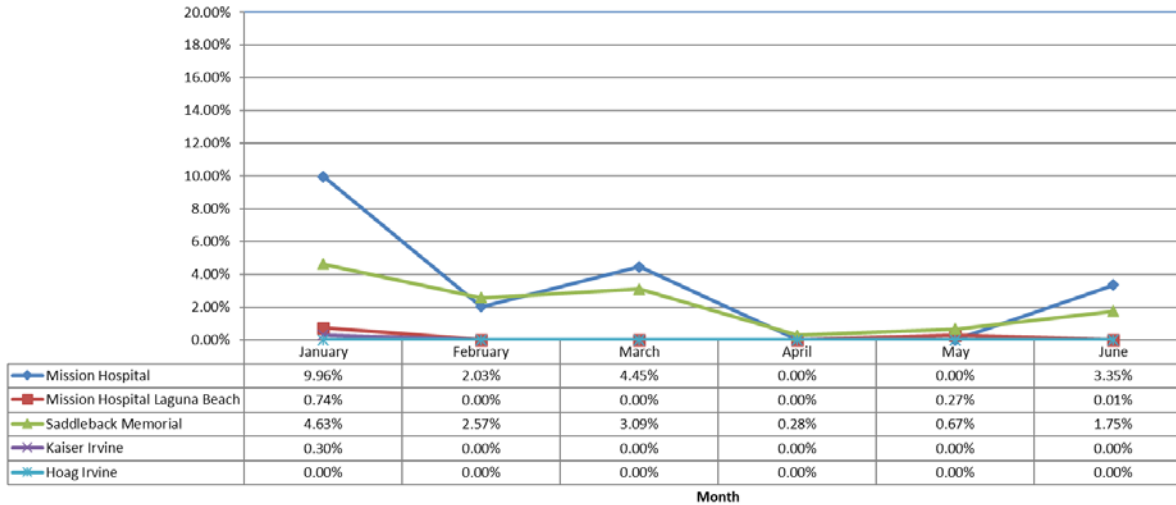
- Garden Grove Medical Center
- Chapman Global Medical Center
- Children's Hospital Orange County
- St. Joseph Hospital
- UCI
- Orange County Global Medical Center
- Foothill Regional Medical Center

Central Area- 2020 - ERC Diversion



Emergency Receiving Center Diversion- Percent of Time

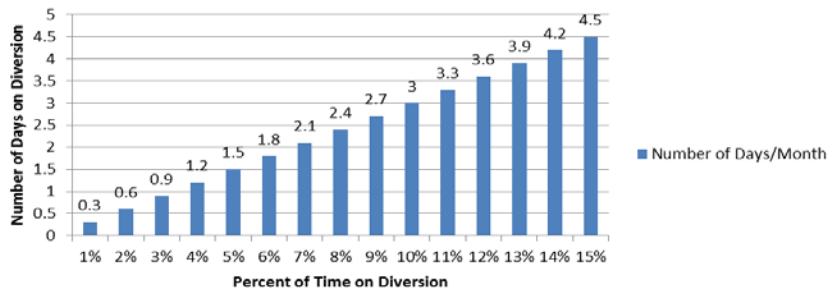
South Area- 2020 - ERC Diversion



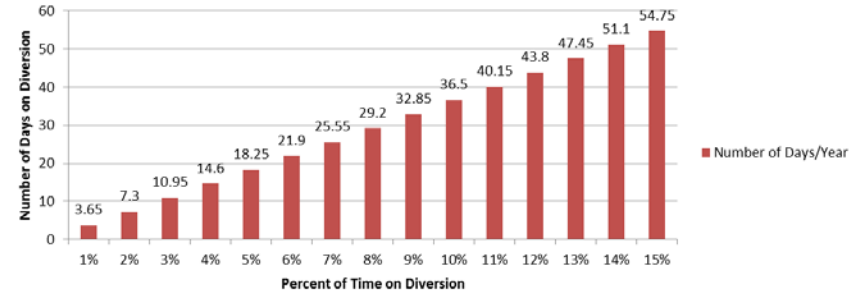
South Area Includes:

- Mission Hospital – Mission Viejo
- Mission Hospital – Laguna Beach
- Saddleback Memorial Medical Center
- Laguna Hills
- Kaiser Hospital – Irvine
- Hoag Hospital - Irvine

Number of Days/Month on Diversion



Number of Days/Year on Diversion



The two charts above demonstrate the monthly and annual impact of diversion represented as a total number of days an ERC would not receive patients given the percent of time of diversion.

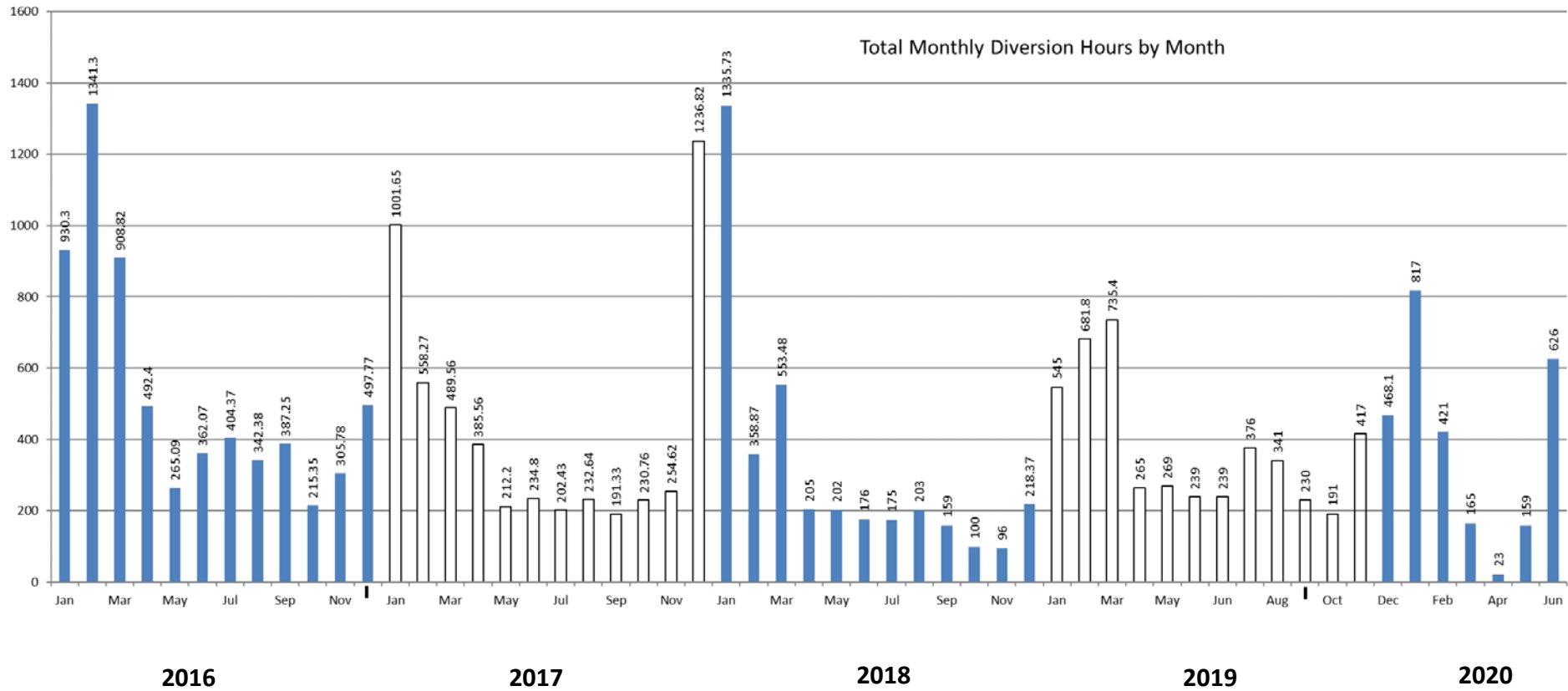
Note: Number of days/month based on 30 days in a month

Emergency Receiving Center Diversion- Total Hours

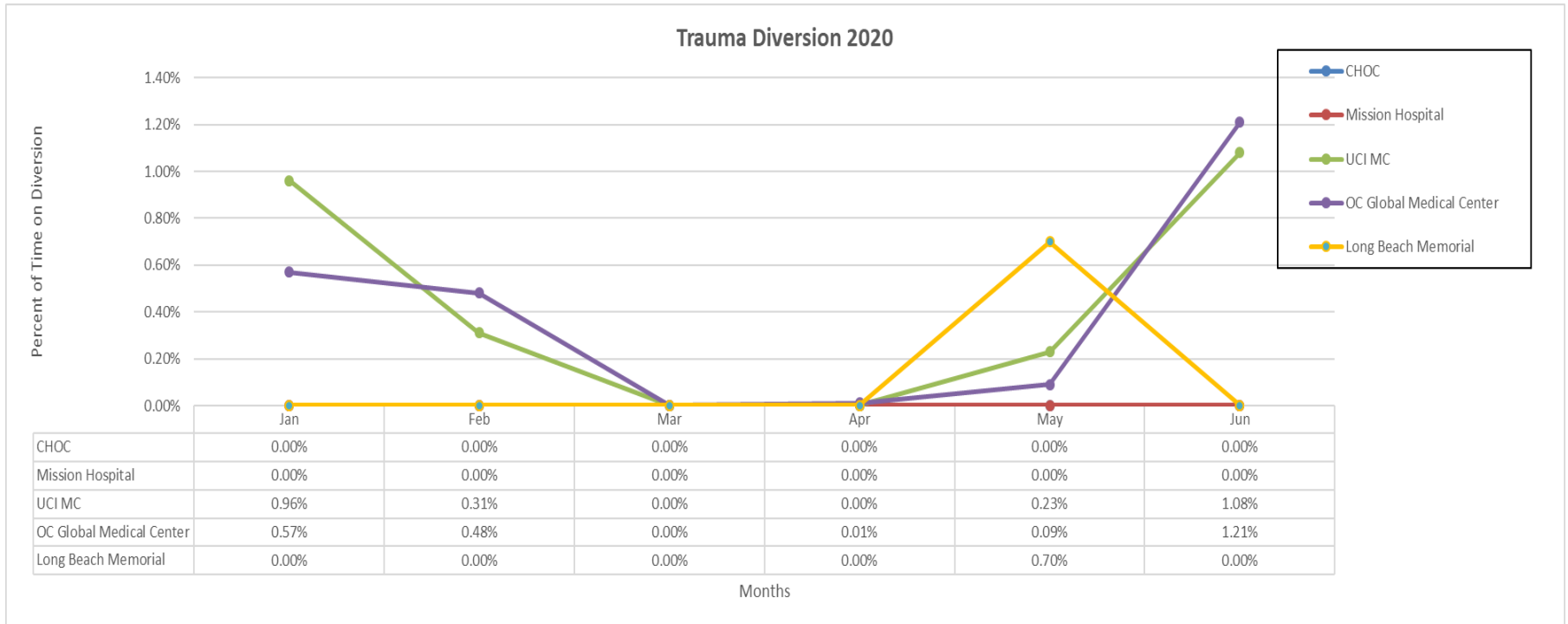
| Emergency Receiving Center Diversion Hours 2020 | | | | | | |
|---|---------------|---------------|---------------|--------------|---------------|---------------|
| | Jan | Feb | Mar | Apr | May | Jun |
| Anaheim Global Medical Ctr | 39.00 | 51.00 | 5.00 | 9.00 | 36.00 | 70.00 |
| Anaheim Regional Med Ctr | 24.00 | 11.00 | 0.00 | 0.00 | 0.00 | 47.00 |
| Chapman Global Medical Ctr | 0.00 | 13.00 | 43.00 | 0.00 | 0.00 | 17.00 |
| CHOC | 0.00 | 0.00 | 0.00 | 0.00 | 0.00 | 0.00 |
| Foothill Regional Medical Ctr | 0.00 | 0.00 | 0.00 | 0.00 | 3.00 | 2.00 |
| Fountain Valley | 0.00 | 0.00 | 0.00 | 0.00 | 0.00 | 0.00 |
| Garden Grove Hospital | 0.00 | 0.00 | 0.00 | 0.00 | 0.00 | 0.00 |
| Hoag Hospital Irvine | 0.00 | 0.00 | 0.00 | 0.00 | 0.00 | 0.00 |
| Hoag Newport | 0.00 | 0.00 | 0.00 | 0.00 | 0.00 | 0.00 |
| Huntington Beach | 0.00 | 3.00 | 0.00 | 0.00 | 1.00 | 1.00 |
| Kaiser Anaheim | 79.00 | 78.00 | 8.00 | 0.00 | 0.00 | 79.00 |
| Kaiser Irvine | 2.00 | 0.00 | 0.00 | 0.00 | 0.00 | 0.00 |
| La Palma Intercommunity | 59.00 | 26.00 | 20.00 | 0.00 | 0.00 | 22.00 |
| Los Alamitos | 104.00 | 22.00 | 11.00 | 0.00 | 3.00 | 21.00 |
| Mission Hospital Laguna | 5.00 | 0.00 | 0.00 | 0.00 | 2.00 | 0.00 |
| Mission Hospital Mission | 74.00 | 14.00 | 33.00 | 0.00 | 0.00 | 24.00 |
| Orange Coast Memorial | 88.00 | 28.00 | 0.00 | 0.00 | 0.00 | 11.00 |
| Orange County Global Med | 82.00 | 15.00 | 10.00 | 6.00 | 51.00 | 92.00 |
| Placentia Linda Hospital | 0.00 | 0.00 | 0.00 | 0.00 | 0.00 | 0.00 |
| Saddleback Memorial | 34.00 | 17.00 | 23.00 | 2.00 | 5.00 | 12.00 |
| South Coast Global | 0.00 | 0.00 | 0.00 | 4.00 | 15.00 | 10.00 |
| St Joseph | 4.00 | 0.00 | 0.00 | 0.00 | 0.00 | 19.00 |
| St. Jude Medical Ctr | 48.00 | 14.00 | 10.00 | 0.00 | 0.00 | 29.00 |
| UCI | 107.00 | 107.00 | 0.00 | 0.00 | 10.00 | 86.00 |
| West Anaheim Medical Ctr | 68.00 | 22.00 | 2.00 | 2.00 | 29.00 | 74.00 |
| Total | 817.00 | 421.00 | 165.00 | 23.00 | 155.00 | 616.00 |



Emergency Receiving Center Diversion 2016 - 2020



Trauma Receiving Center Diversion- Percent of Time



Cardiovascular Receiving Center Diversion- Percent of Time

| CVRC 2020 | | | | | | |
|------------------------------|-------|-------|-------|-------|-------|-------|
| | Jan | Feb | Mar | Apr | May | Jun |
| Anaheim Global Medical Ctr | 0.00% | 1.16% | 1.41% | 0.00% | 0.00% | 0.00% |
| Anaheim Regional Medical Ctr | 0.00% | 0.00% | 0.00% | 0.00% | 0.14% | 0.00% |
| Fountain Valley | 0.00% | 0.00% | 0.00% | 0.00% | 0.00% | 0.00% |
| Hoag Hospital Irvine | 0.00% | 0.00% | 0.00% | 0.00% | 0.00% | 0.00% |
| Hoag Hospital Newport | 0.00% | 0.00% | 0.00% | 0.00% | 0.00% | 0.00% |
| Los Alamitos | 1.38% | 0.31% | 0.00% | 0.00% | 0.00% | 0.00% |
| Orange Coast Memorial Med | 0.00% | 0.00% | 0.00% | 0.01% | 0.00% | 0.00% |
| Orange County Global Med | 0.87% | 1.34% | 0.06% | 0.35% | 0.89% | 1.60% |
| Mission Hospital | 0.00% | 0.00% | 0.00% | 0.00% | 0.00% | 0.00% |
| Saddleback Memorial | 0.00% | 0.00% | 0.00% | 0.00% | 0.00% | 0.00% |
| St Joseph | 0.20% | 0.00% | 0.00% | 0.00% | 0.00% | 0.00% |
| St Jude | 0.00% | 0.00% | 0.00% | 0.00% | 0.00% | 0.00% |
| UCI | 0.00% | 0.00% | 0.00% | 0.00% | 0.00% | 0.00% |
| West Anaheim Medical Ctr | 1.93% | 0.73% | 1.20% | 0.36% | 1.36% | 1.42% |

Highlighted in Red =Diversion Any Amount



Internal Disruption Diversion- Percent of Time

| Internal Disruption 2020 | | | | | | |
|-------------------------------|-------|-------|-------|-------|-------|-------|
| | Jan | Feb | Mar | Apr | May | Jun |
| Anaheim Global Medical Ctr | 0.02% | 0.00% | 0.00% | 0.00% | 0.00% | 0.00% |
| Anaheim Regional Med Ctr | 0.00% | 0.00% | 0.00% | 0.00% | 0.00% | 0.00% |
| Chapman Global Medical Ctr | 0.00% | 0.00% | 0.00% | 0.00% | 0.00% | 0.00% |
| CHOC | 0.00% | 0.00% | 0.00% | 0.00% | 0.06% | 0.00% |
| Foothill Regional Medical Ctr | 0.00% | 1.05% | 0.00% | 0.00% | 0.00% | 0.00% |
| Fountain Valley | 0.00% | 0.00% | 0.00% | 0.00% | 0.00% | 0.00% |
| Garden Grove Hospital | 0.00% | 0.00% | 0.00% | 0.00% | 0.00% | 0.00% |
| Hoag Hospital Irvine | 0.00% | 0.48% | 0.00% | 0.28% | 0.00% | 0.00% |
| Hoag Newport | 0.00% | 0.49% | 0.00% | 0.00% | 0.00% | 0.00% |
| Huntington Beach | 0.00% | 0.00% | 0.00% | 0.00% | 0.00% | 0.00% |
| Kaiser Anaheim | 0.00% | 0.00% | 0.00% | 0.00% | 0.14% | 0.00% |
| Kaiser Irvine | 0.00% | 0.00% | 0.00% | 0.00% | 0.00% | 0.00% |
| La Palma Intercommunity | 0.00% | 0.00% | 0.00% | 0.00% | 0.00% | 0.00% |
| Los Alamitos | 0.35% | 0.00% | 0.00% | 0.00% | 0.00% | 0.00% |
| Mission Hospital Laguna | 0.00% | 0.00% | 0.00% | 0.00% | 0.76% | 0.00% |
| Mission Hospital Mission | 0.00% | 0.00% | 0.00% | 0.22% | 0.00% | 0.00% |
| Orange Coast Memorial | 0.00% | 0.00% | 0.00% | 0.29% | 0.00% | 0.17% |
| Orange County Global Med | 0.00% | 0.00% | 0.00% | 0.00% | 0.00% | 0.00% |
| Placentia Linda Hospital | 0.00% | 0.00% | 0.00% | 0.00% | 0.00% | 0.00% |
| Saddleback Memorial | 0.09% | 0.00% | 0.00% | 0.00% | 0.00% | 0.00% |
| South Coast Global | 0.00% | 0.00% | 0.00% | 0.00% | 0.00% | 0.13% |
| St Joseph | 0.00% | 0.00% | 0.00% | 0.00% | 0.00% | 0.00% |
| St. Jude Medical Ctr | 0.00% | 0.00% | 0.00% | 0.00% | 0.00% | 0.00% |
| UCI | 0.00% | 0.00% | 0.00% | 0.00% | 0.00% | 0.00% |
| West Anaheim Medical Ctr | 0.00% | 0.00% | 0.00% | 0.00% | 0.00% | 0.00% |



Highlighted in Red =Diversion Any Amount

CT Diversion Report- Percent of Time

| CT Diversion 2020 | | | | | | |
|-------------------------------|--------|--------|-------|-------|-------|-------|
| | Jan | Feb | Mar | Apr | May | Jun |
| Anaheim Global Medical Ctr | 0.00% | 0.00% | 1.05% | 4.06% | 0.98% | 3.83% |
| Anaheim Regional Med Ctr | 6.62% | 1.31% | 0.45% | 1.54% | 1.13% | 1.84% |
| Chapman Global Medical Ctr | 1.19% | 1.37% | 3.01% | 0.00% | 0.50% | 6.80% |
| CHOC | 0.00% | 0.00% | 0.00% | 0.00% | 0.00% | 0.00% |
| Foothill Regional Medical Ctr | 0.00% | 7.06% | 0.43% | 0.00% | 0.36% | 7.21% |
| Fountain Valley | 0.00% | 0.00% | 0.00% | 0.00% | 0.00% | 0.00% |
| Garden Grove Hospital | 0.00% | 1.47% | 0.44% | 0.78% | 0.00% | 0.00% |
| Hoag Hospital Irvine | 0.00% | 0.00% | 0.00% | 0.00% | 0.00% | 0.00% |
| Hoag Newport | 0.00% | 0.00% | 0.00% | 0.00% | 0.00% | 0.00% |
| Huntington Beach | 0.00% | 0.00% | 0.00% | 0.00% | 0.00% | 0.00% |
| Kaiser Anaheim | 0.00% | 0.00% | 0.00% | 0.04% | 0.00% | 0.29% |
| Kaiser Irvine | 0.00% | 0.00% | 0.00% | 0.00% | 0.00% | 0.00% |
| La Palma Intercommunity | 0.51% | 0.00% | 2.69% | 2.15% | 7.12% | 8.70% |
| Los Alamitos | 0.99% | 0.31% | 0.00% | 0.00% | 0.00% | 0.00% |
| Mission Hospital Laguna | 0.00% | 0.00% | 6.48% | 0.00% | 0.15% | 0.03% |
| Mission Hospital Mission | 0.00% | 0.00% | 0.00% | 0.00% | 0.00% | 0.00% |
| Orange Coast Memorial | 0.00% | 0.00% | 0.00% | 0.01% | 0.00% | 0.00% |
| Orange County Global Med | 0.06% | 0.40% | 0.00% | 0.00% | 0.00% | 0.00% |
| Placentia Linda Hospital | 0.00% | 0.00% | 0.00% | 0.00% | 0.00% | 0.32% |
| Saddleback Memorial | 0.00% | 0.00% | 0.00% | 0.00% | 0.00% | 0.00% |
| South Coast Global | 17.21% | 12.64% | 0.00% | 0.00% | 0.00% | 1.76% |
| St Joseph | 0.00% | 0.00% | 0.00% | 0.07% | 0.00% | 0.00% |
| St. Jude Medical Ctr | 0.00% | 0.00% | 0.00% | 0.00% | 0.00% | 0.00% |
| UCI | 0.00% | 0.00% | 0.00% | 0.00% | 0.00% | 0.00% |
| West Anaheim Medical Ctr | 0.00% | 0.00% | 0.00% | 0.00% | 0.00% | 0.31% |



Highlighted in Red =Diversion Any Amount