

**Orange County Emergency Medical Services
Medical Health Operational Area Coordination (MHOAC)**
Online at: <http://www.healthdisasteroc.org/ems/archive>
10/07/20

OVERVIEW OF CURRENT SITUATION (10/07/20 0830) Source: Johns Hopkins University & Medicine <https://coronavirus.jhu.edu/map.html>

Cases / Deaths
 Worldwide: 35,906,341 / 1,051,138
 Nationwide: 7,506,743 / 211,108
 California: 838,953 / 16,269
 Orange Co: 55,042 / 1,292 Source: [Orange County COVID-19 Case Counts & Testing Figures](#)

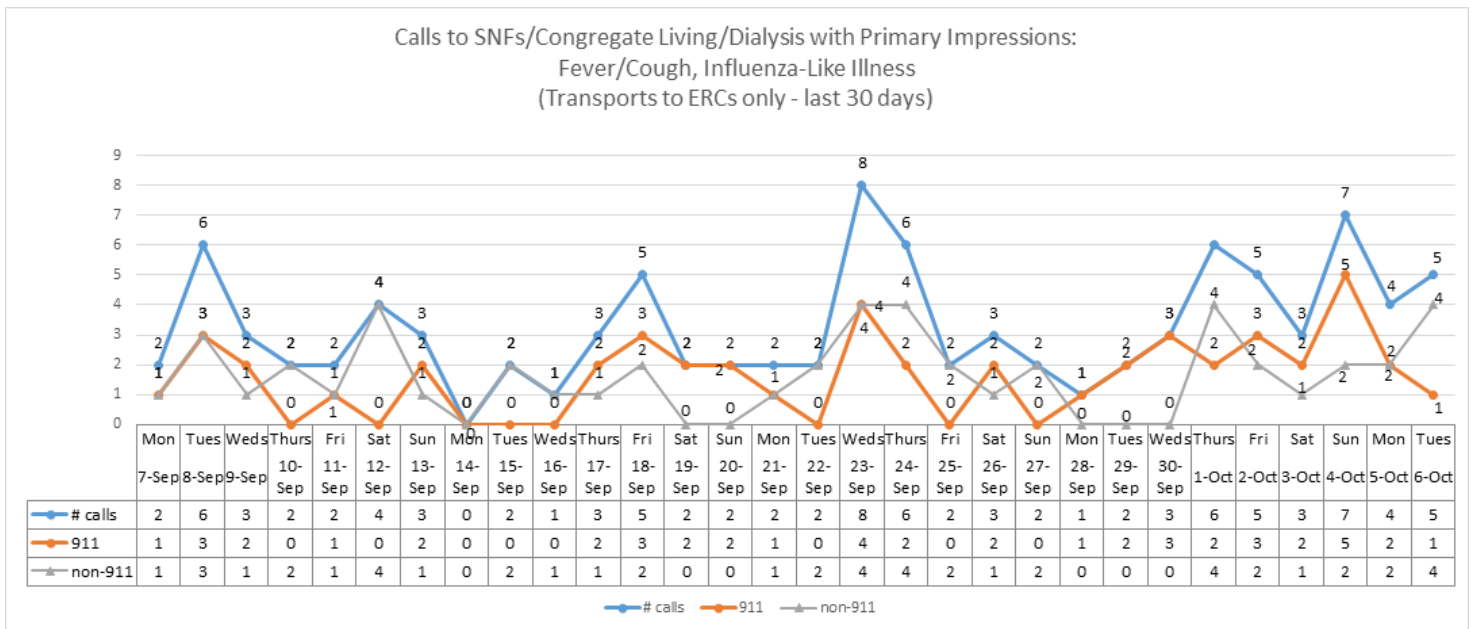
ORANGE COUNTY PUBLIC HEALTH (as of 10/07/20 1000)

Orange County COVID-19 Summary* click for full details	Sat 10/3/20	Sun 10/4/20	Mon 10/5/20	Tue 10/6/20	Wed 10/7/20	Thu 10/8/20	Fri 10/9/20
Cases Reported to Date	54,357	54,640	54,760	54,898	55,042		
Deaths Reported to Date	1,286	1,287	1,287	1,289	1,292		
Tests Reported Today	10,074	5,513	3,393	5,286	6,066		
Cumulative Tests to Date	891,104	896,617	900,010	905,296	911,362		

Data posted is always preliminary & subject to change. More information may become available as individual case investigations are completed. **LOCAL DATA MAY BE DIFFERENT FROM THE STATE WEBSITE DATA*

SKILLED NURSING/ASSISTED LIVING/RESIDENTIAL CARE FACILITY – TRENDS

*Data Source: Orange County Medical Emergency Data System (OC-MEDS)



*Data Source: California Department of Public Health (CDPH)

Reporting Date: 10/06/20 (72/73 SNFs reported)	Skilled Nursing Facility PPE – DAYS ON HAND*			
	0 - 3 days	4 - 7 days	8-14 days	15+ days
N95 Masks	1	3	15	53
Surgical Masks	0	3	12	57
Eye Protection	0	3	13	56
Gowns	0	2	14	56
Gloves	1	4	16	51
Alcohol-Based Hand Sanitizer	0	4	12	56

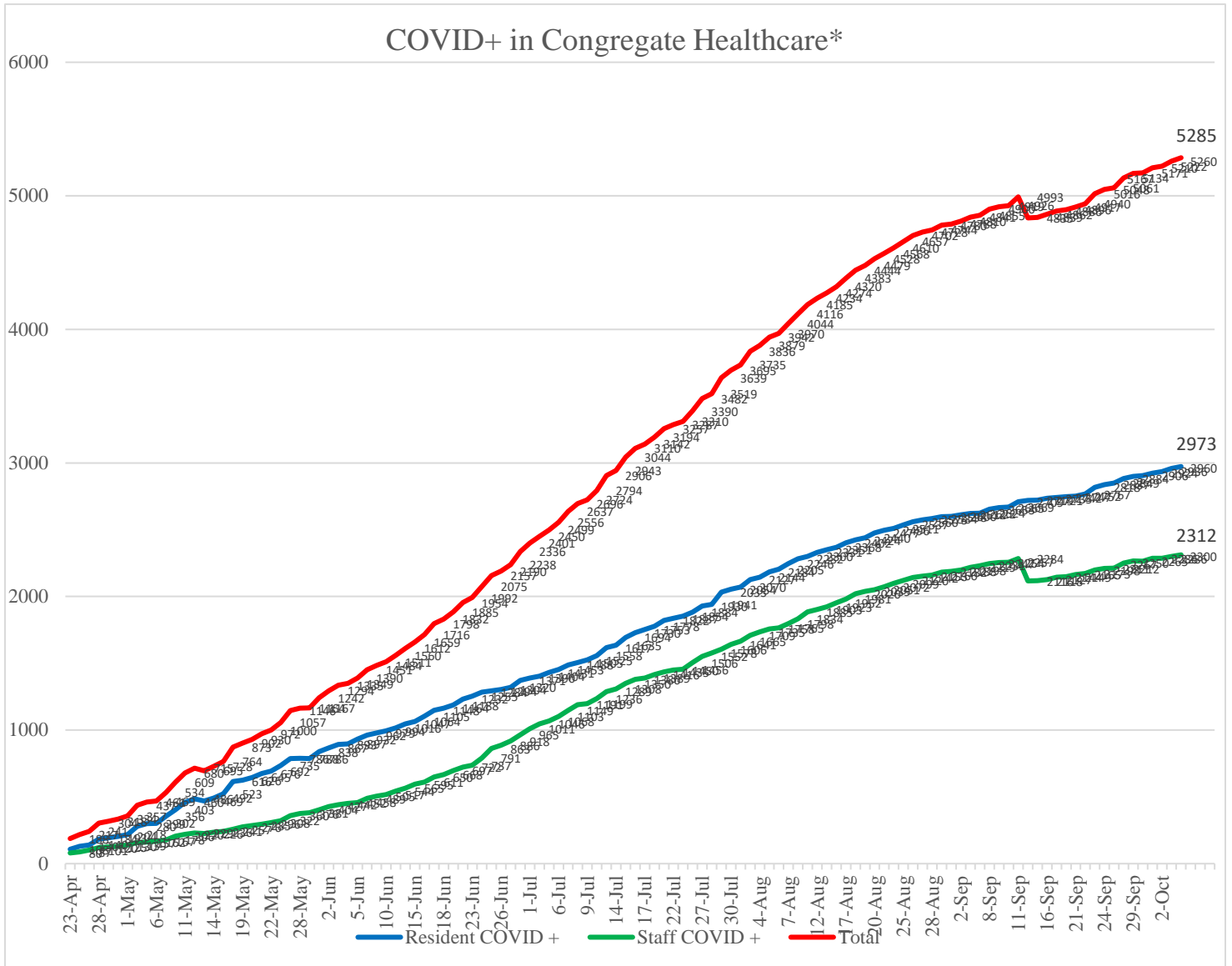
**Orange County Emergency Medical Services
Medical Health Operational Area Coordination (MHOAC)**

Online at: <http://www.healthdisasteroc.org/ems/archive>

10/07/20

*Data Source: Orange County Health Care Agency – Public Health

NOTE: Decrease in the COVID + in staff seen on graph is due to data being cleaned and removing duplicates of those that work in multiple OC facilities or are contract staff and care for residents at multiple facilities.



*Data Source: Orange County Health Care Agency – Public Health

Current Facility Outbreaks (as of 10/07/20 1700)

Facility Type by Licensing Category	#	An "Outbreak" is two (2) or more confirmed cases of COVID-19 in facility occurring within 14 days.
Skilled Nursing Facility	11	Alamitos West Health & Rehabilitation, Anaheim Terrace Care Center, Garden Park Care Center, Gordon Lane Care Center, Greenfield Care Center Of Fullerton, Llc, Palm Terrace Healthcare & Rehabilitation Center, St. Edna Subacute And Rehabilitation Center, St. Elizabeth Healthcare Center, Sun Mar Nursing Center, Terrace View Care Center, The Pavilion At Sunny Hills
Elderly Assisted Living	5	Atria Del Sol, Del Obispo Terrace Senior Living, Katella Senior Living Community, Silverado Brea Llc, Walnut Village

**Orange County Emergency Medical Services
Medical Health Operational Area Coordination (MHOAC)**
Online at: <http://www.healthdisasteroc.org/ems/archive>
10/07/20

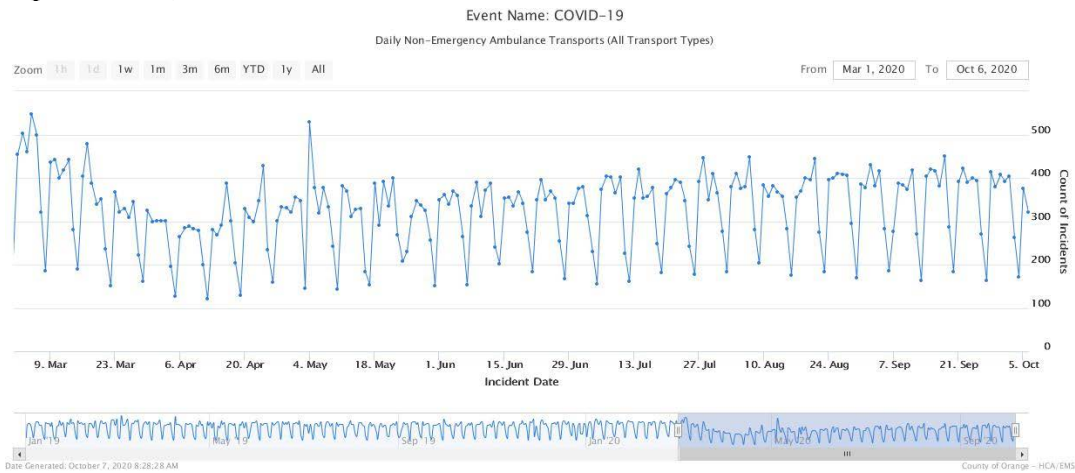
EMERGENCY MEDICAL SERVICES STATUS

*Data Source: Orange County Medical Emergency Data System (OC-MEDS)

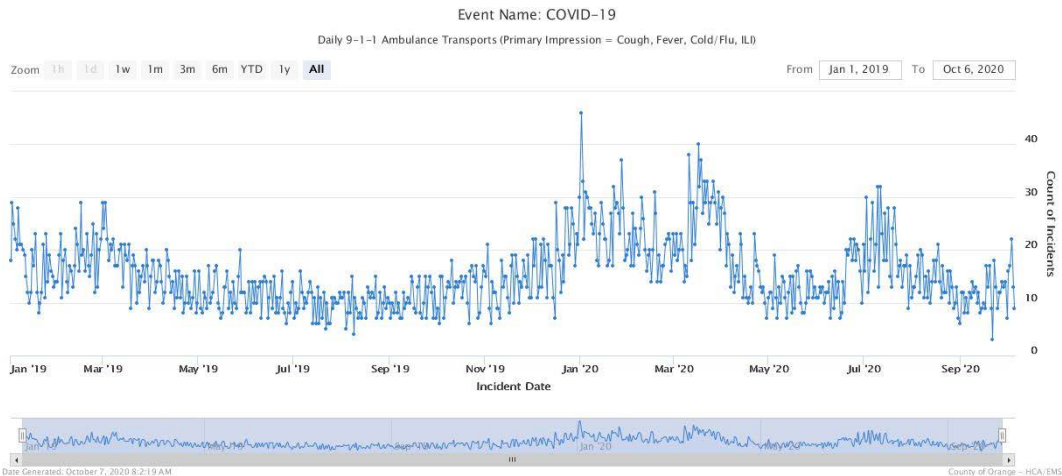
- 9-1-1 ambulance transport volume have been stable and remain about 10% below normal (pre-COVID) levels overall.



- Non-emergency ambulance transports have remained stable and continue to average about 20-25% below normal (pre-COVID) levels.



- Primary Impressions of Cold/Flu/ILI by 9-1-1 EMS providers increased slightly over the last few days.



**Orange County Emergency Medical Services
Medical Health Operational Area Coordination (MHOAC)**

Online at: <http://www.healthdisasteroc.org/ems/archive>

10/07/20

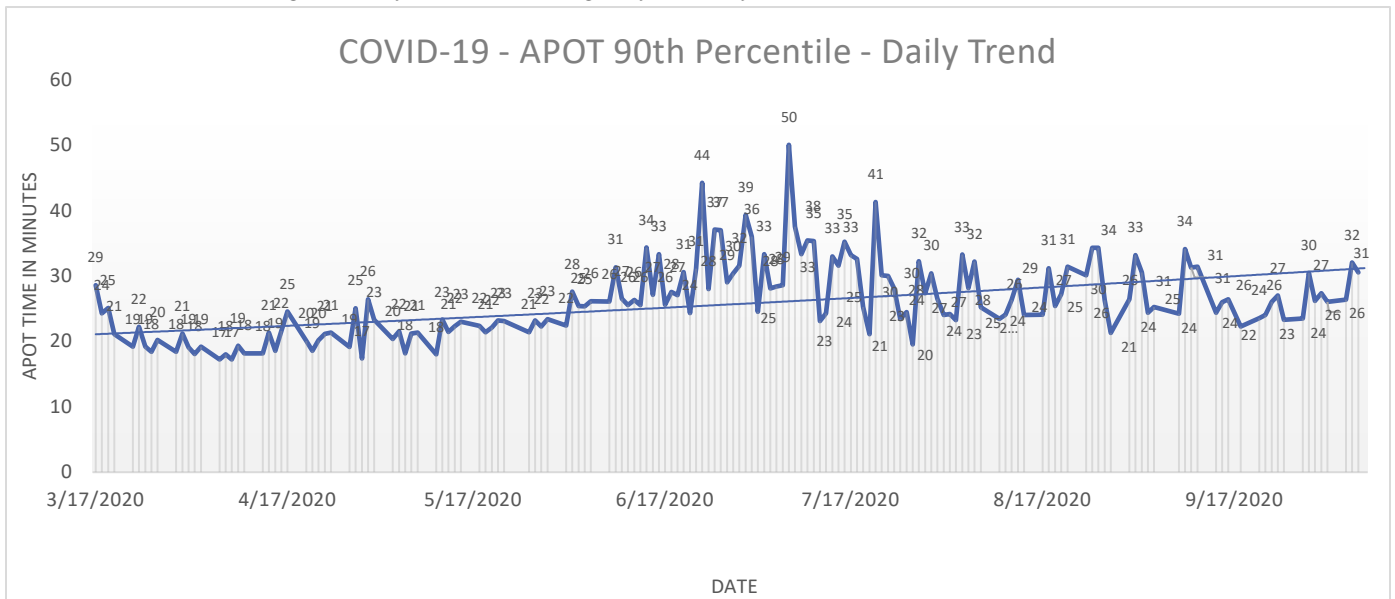
- Ambulance Patient Offload Time (APOT) is defined as the time the ambulance arrives at the receiving destination (wheels stop) to the time that the ambulance crew physically transfers the patient to the ED gurney. Last 24 hours: **Current Average APOT is: 15m25s / Current 90th Percentile APOT is: 30m56s**

The chart below displays a daily trend since the COVID-19 event began.

- Twelve (12) ERCs had APOT times greater than thirty (30) minutes.
- Three (3) ERCs had APOT times greater than sixty (60) minutes.

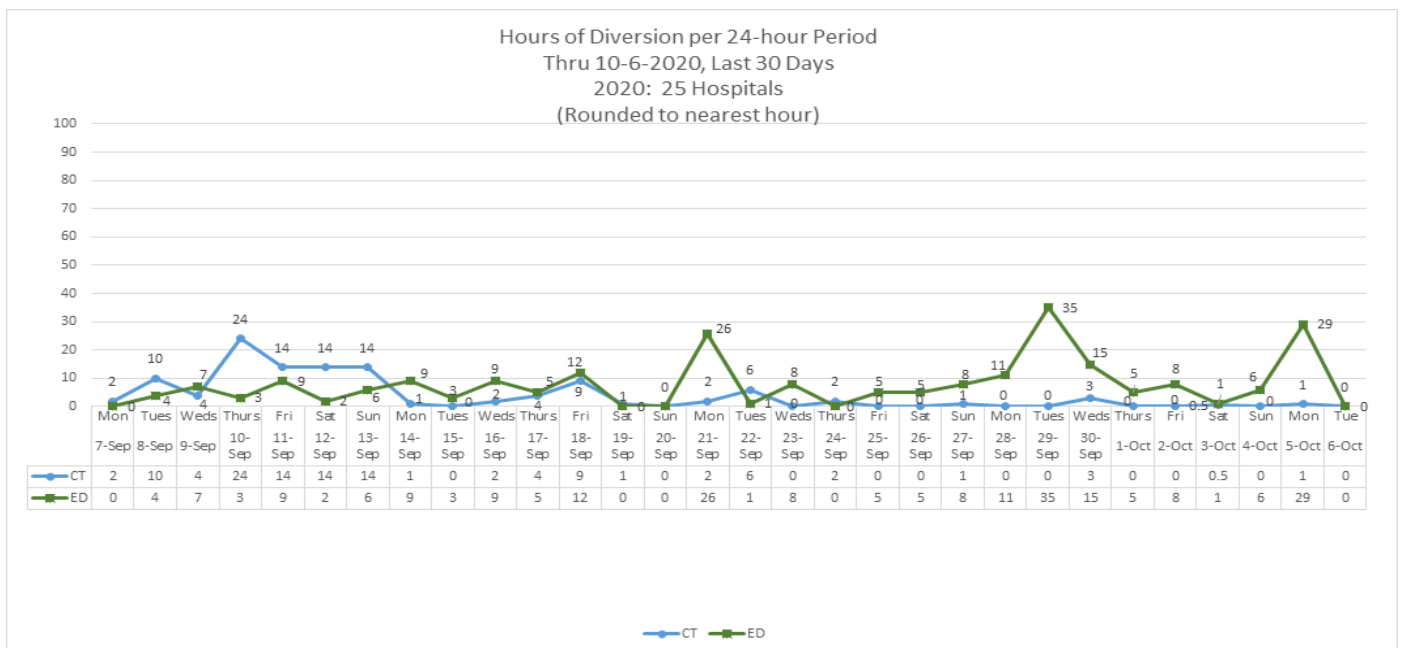
Note: a handful of ERCs were close to the 30 minute threshold, but were not over it.

*Data Source: Orange County Medical Emergency Data System (OC-MEDS)



- **Emergency Department (ED) Diversion & Computerized Tomography (CT) (ED closed to all ambulance transport due to no ED capacity or no CT available) for the last 30 days 9/7/20 – 10/6/20 below.**

*Data Source: ReddiNet



**Orange County Emergency Medical Services
Medical Health Operational Area Coordination (MHOAC)**

Online at: <http://www.healthdisasteroc.org/ems/archive>

10/07/20

(26): Anaheim Regional, Anaheim Global, Chapman Global, CHOC, CHOC at Mission, Foothill, Fountain Valley, Garden Grove, Hoag-Irvine, Hoag-Newport Beach, Huntington Beach, Kaiser-Anaheim, Kaiser-Irvine, La Palma, Los Alamitos, Mission –Laguna Beach, Mission-Mission Viejo, Orange Coast Memorial, Orange County Global, Placentia Linda, Saddleback Memorial, Saint Jude, South Coast Global, St. Josephs, UCI, West Anaheim

DATE	ALL HOSPITALS (33)						EMERGENCY RECEIVING CENTERS					
	Census ALL	Occupancy %	COVID+ Hospitalized	COVID+ ICU	% ICU Beds Available	% ICU Ventilators Available	Census ALL	Occupancy %	COVID+ Hospitalized	COVID+ ICU	% ICU Beds Available	% ICU Ventilators Available
9/16	3543	69%	198	64	37%	64%	3379	68%	198	64	37%	63%
9/17	3544	69%	201	64	35%	67%	3375	69%	201	64	35%	67%
9/18	3664	70%	202	65	34%	66%	3489	69%	202	65	34%	65%
9/19	3319	66%	170	55	36%	65%	3160	65%	170	55	36%	65%
9/20	3458	67%	178	64	34%	65%	3282	67%	178	64	34%	65%
9/21	3361	66%	175	55	36%	64%	3202	66%	175	55	36%	64%
9/22	3588	69%	175	51	35%	65%	3418	69%	175	51	35%	65%
9/23	3563	69%	168	42	32%	66%	3388	69%	168	42	32%	65%
9/24	3521	69%	157	50	35%	65%	3349	68%	157	50	35%	65%
9/25	3528	69%	156	47	34%	66%	3353	69%	156	47	34%	66%
9/26	3416	67%	164	45	37%	67%	3242	66%	164	45	37%	67%
9/27	3321	66%	161	46	38%	67%	3155	65%	161	46	38%	67%
9/28	3331	66%	162	46	35%	67%	3174	66%	162	46	35%	67%
9/29	3547	69%	172	48	33%	65%	3386	68%	172	48	33%	65%
9/30	3543	69%	173	45	31%	66%	3367	68%	173	45	31%	65%
10/1	3540	69%	175	48	34%	67%	3357	69%	175	48	34%	67%
10/2	3617	70%	160	47	33%	67%	3435	69%	160	47	33%	67%
10/3	3520	67%	155	47	34%	68%	3339	67%	155	47	34%	68%
10/4	3408	66%	168	53	34%	68%	3230	65%	168	53	34%	68%
10/5	3337	66%	176	63	30%	67%	3214	66%	176	63	30%	67%
10/6	3653	69%	183	64	30%	66%	3442	69%	183	64	30%	66%

*Data Source: California Department of Public Health (CDPH) – Snowflake server

*HHS significantly changed [reporting requirements](#) for hospitals effective 07/22/20.

Current data is posted on the CDPH website at:

<https://public.tableau.com/views/COVID-19HospitalsDashboard/Hospitals?%3Aembed=y&%3AshowVizHome=no>

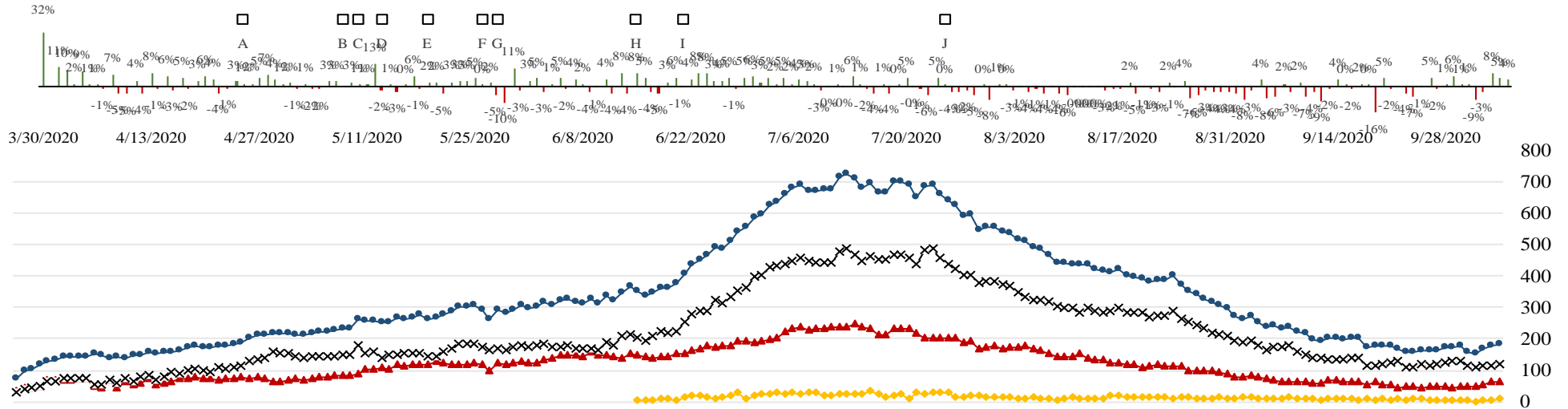
Orange County Emergency Medical Services Medical Health Operational Area Coordination (MHOAC)

Online at: <http://www.healthdisasteroc.org/ems/archive>

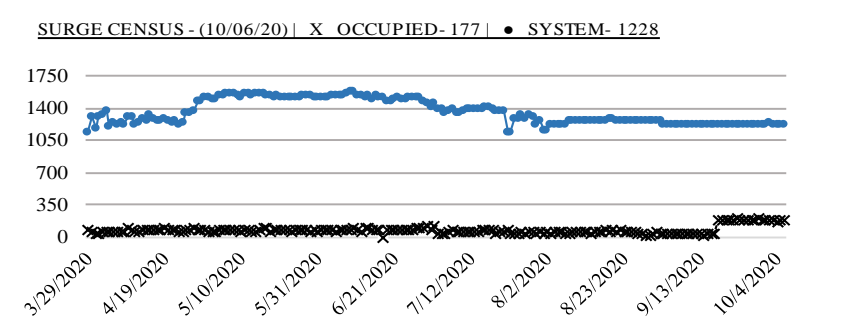
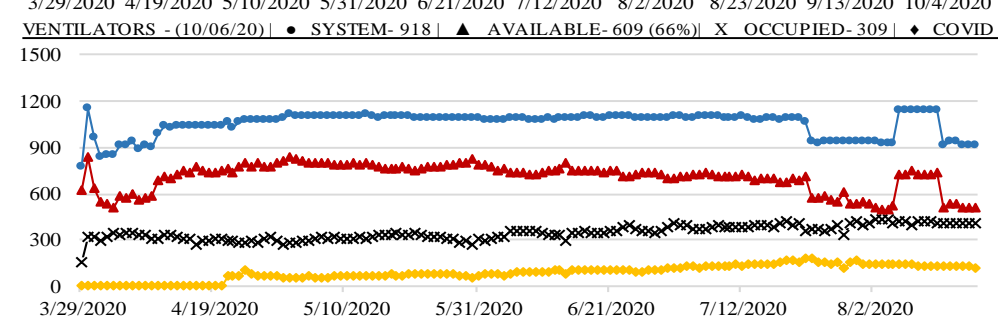
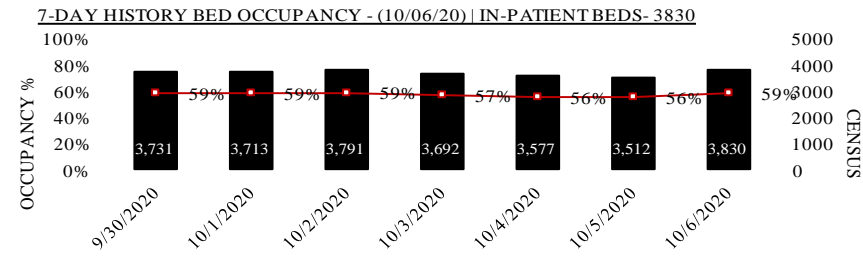
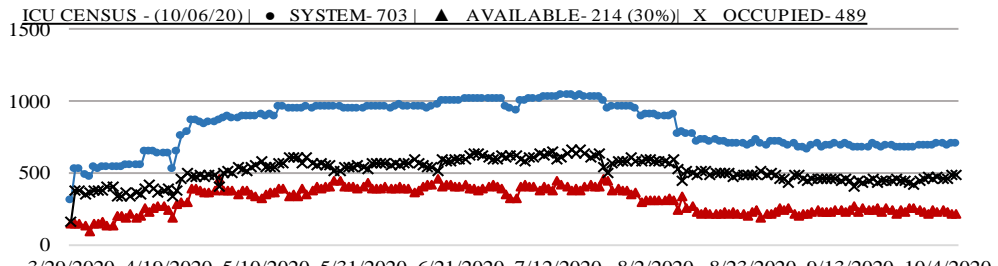
10/07/20

COVID 19 ORANGE COUNTY HOSPITAL SYSTEM DATA (CA SNOWFLAKE SERVER)

NON-ICU - 10/06/20 X			ICU - 10/06/20 ▲			ED OVERFLOW - 10/06/20 ▼			SYSTEM - 10/06/20 ●			1 DAY +/- (10/05/20)			3 DAY +/- (10/04/20)			7 DAY +/- (09/30/20)		
119	6	5.3%	64	1	1.6%	9	5	125.0%	183	7	4.0%	183	7	4.0%	168	15	8.9%	173	10	5.8%
▲			▲			▲			▲			▲			▲					



A. Face Covers Mandatory, B. Cinco de Mayo, C. OC Beaches Open, D. Mom's Day, E. OC Parks Parking Open, F. OC Stage 2 Approved, G. Memorial Day, H. Re-open entertainment, etc., I. CA Gov. Mask Mandate, J. Changes to data collection, Federal

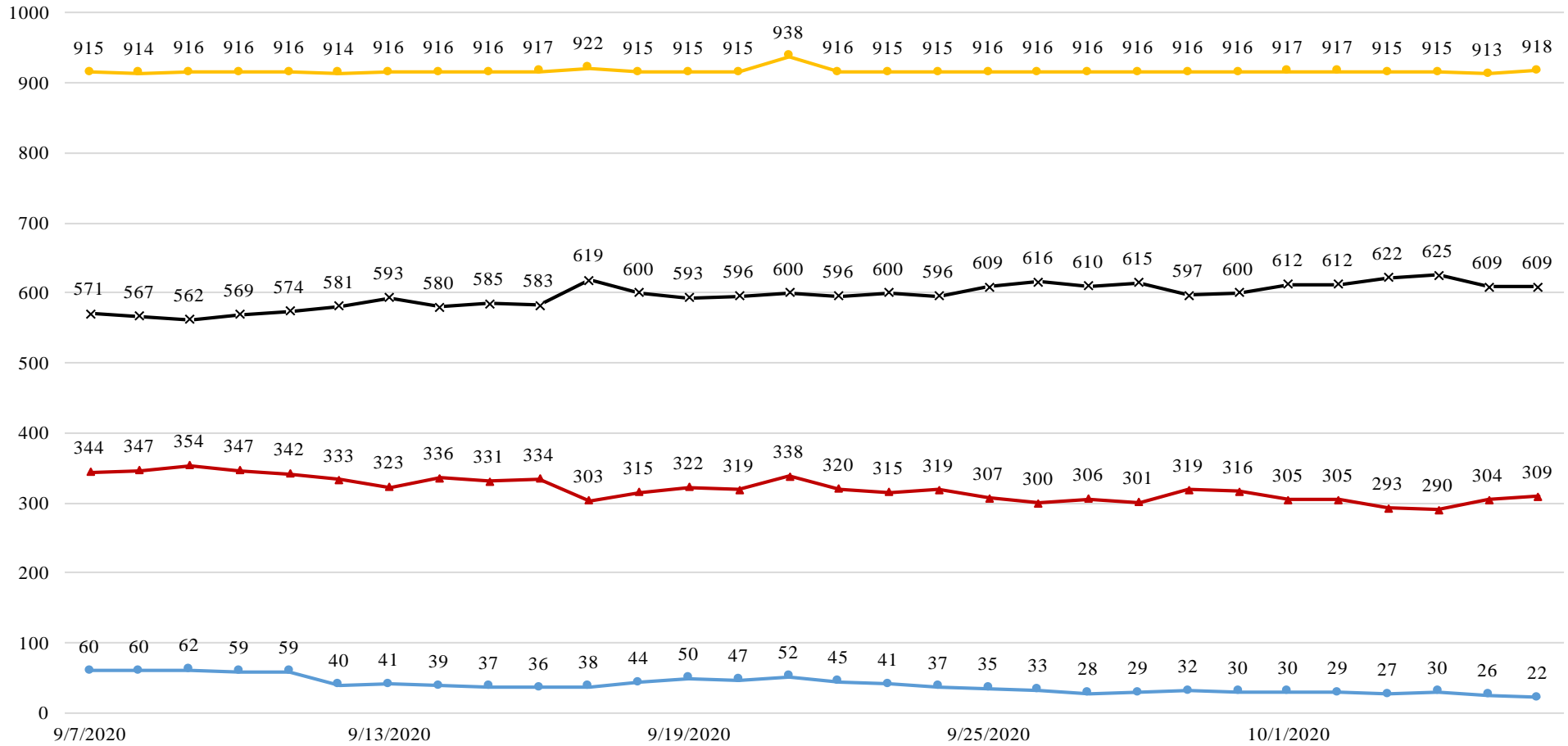


**Orange County Emergency Medical Services
Medical Health Operational Area Coordination (MHOAC)**

Online at: <http://www.healthdisasteroc.org/ems/archive>

10/07/20

COVID 19 ORANGE COUNTY HOSPITAL SYSTEM DATA (CA SNOWFLAKE SERVER) VENTILATORS IN USE (09/07/20 - 10/06/20) | 34 ACUTE CARE FACILITIES REPORTING



DATE	9/7	9/8	9/9	9/10	9/11	9/12	9/13	9/14	9/15	9/16	9/17	9/18	9/19	9/20	9/21	9/22	9/23	9/24	9/25	9/26	9/27	9/28	9/29	9/30	10/1	10/2	10/3	10/4	10/5	10/6	
COVID+	60	60	62	59	59	40	41	39	37	36	38	44	50	47	52	45	41	37	35	33	28	29	32	30	30	29	27	30	26	22	
SYSTEM OCC	344	347	354	347	342	333	323	336	331	334	303	315	322	319	338	320	315	319	307	300	306	301	319	316	305	305	293	290	304	309	
SYSTEM AVL	571	567	562	569	574	581	593	580	585	583	619	600	593	596	600	596	600	596	609	616	610	615	597	600	612	612	622	625	609	609	
SYSTEM TTL	915	914	916	916	916	914	916	916	916	916	917	922	915	915	915	938	916	915	915	916	916	916	916	916	916	917	917	915	915	913	918

COVID+ = CONFIRMED AND SUSPECTED PATIENTS ON A VENTILATOR

*OCC = VENTILATORS IN USE, INCLUDING COVID+ PATIENTS AND OTHER VENT PATIENTS

**AVL = AVAILABLE NON SURGE ICU BEDS

***TTL = TOTAL NON SURGE ICU BEDS

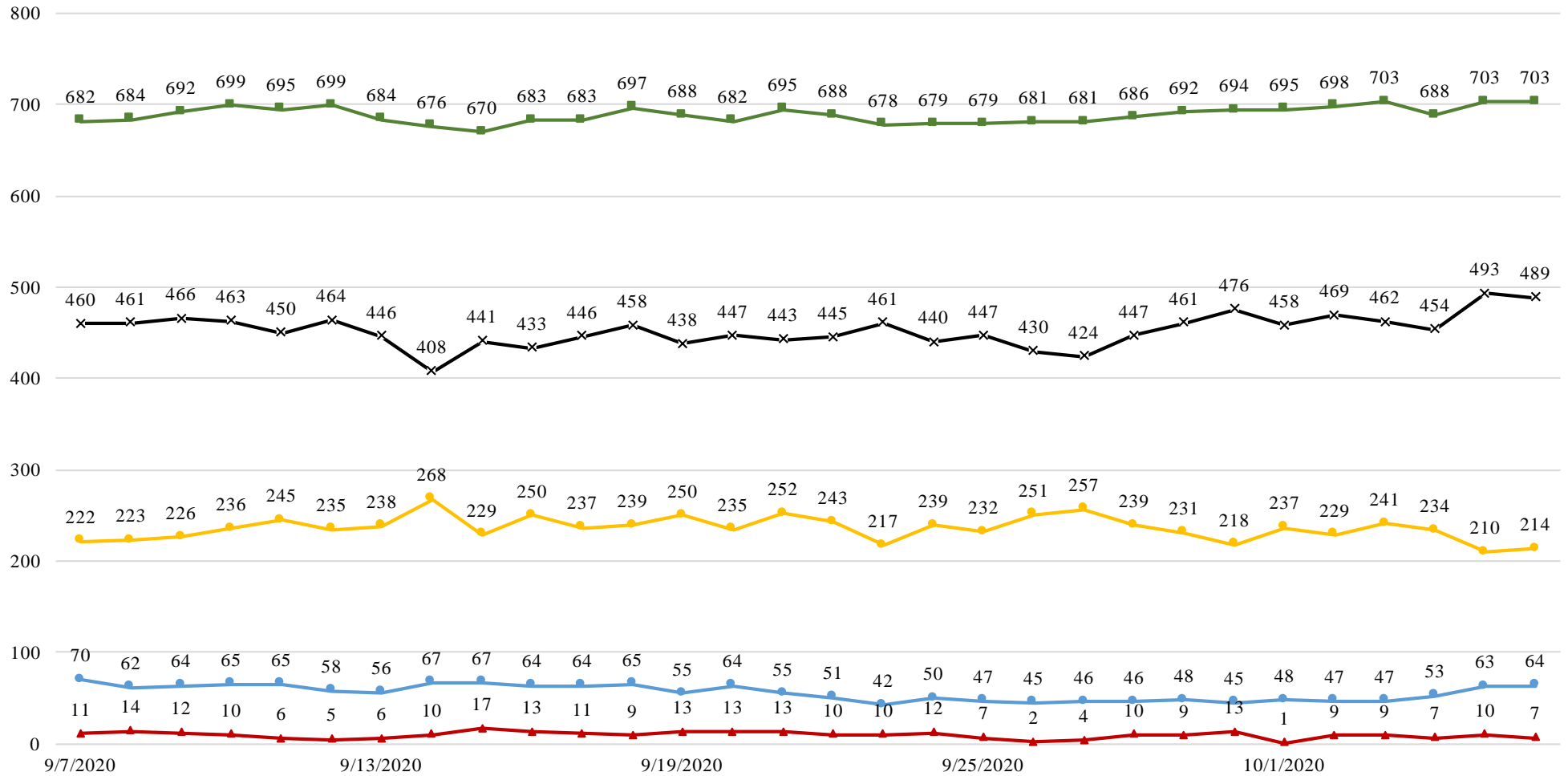
**Orange County Emergency Medical Services
Medical Health Operational Area Coordination (MHOAC)**

Online at: <http://www.healthdisasteroc.org/ems/archive>

10/07/20

COVID 19 ORANGE COUNTY HOSPITAL SYSTEM DATA (CA SNOWFLAKE SERVER)

ICU BEDS (09/07/20 - 10/06/20) | 34 ACUTE CARE FACILITIES REPORTING



DATE	9/7	9/8	9/9	9/10	9/11	9/12	9/13	9/14	9/15	9/16	9/17	9/18	9/19	9/20	9/21	9/22	9/23	9/24	9/25	9/26	9/27	9/28	9/29	9/30	10/1	10/2	10/3	10/4	10/5	10/6	
CONFIRMED	70	62	64	65	65	58	56	67	67	64	64	65	55	64	55	51	42	50	47	45	46	46	48	45	48	47	47	53	63	64	
SUSPECTED	11	14	12	10	6	5	6	10	17	13	11	9	13	13	13	10	10	12	7	2	4	10	9	13	1	9	9	7	10	7	
OCCUPIED	460	461	466	463	450	464	446	408	441	433	446	458	438	447	443	445	461	440	447	430	424	447	461	476	458	469	462	454	493	489	
SYSTEM AVL	222	223	226	236	245	235	238	268	229	250	237	239	250	235	252	243	217	239	232	232	251	257	239	231	218	237	229	241	234	210	214
SYSTEM TTL	682	684	692	699	695	699	684	676	670	683	683	697	688	682	695	688	678	679	679	681	681	686	692	694	695	698	703	688	703	703	

*AVL = AVAILABLE NON SURGE ICU BEDS. PRIOR TO 7/22 DEFINITION DID NOT EXCLUDE NONSURGE.

**TTL = TOTAL NON SURGE ICU BEDS. PRIOR TO 7/22 DEFINITION DID NOT EXCLUDE NONSURGE.

**Orange County Emergency Medical Services
Medical Health Operational Area Coordination (MHOAC)**

Online at: <http://www.healthdisasteroc.org/ems/archive>

10/07/20

- *Data Source: California Department of Public Health (CDPH) – Snowflake server
- *HHS significantly changed [reporting requirements](#) for hospitals effective 07/22/20.
- **CDPH updated how PPE and ventilator supplies are counted on 8/13/20. Count of PAPRs are no longer available. This table has been updated based on data provided by hospitals using the new HHS data standards

Reporting Date: 10/6/20* (33/33 ACHs reported)	Acute Care Hospital PPE / Ventilator Supplies – DAYS ON HAND					
	30 days +	15-30 days	7-14 days	4-6 days	0-3 days	Not Reported
Ventilator Supplies**	2	5	11	2	1	12
N95 Masks**	13	7	3	1	1	8
Surgical Masks**	11	7	6	1	0	8
Face Shields**	13	4	6	0	1	9
Gloves**	7	5	10	2	2	7
Gowns**	8	8	6	1	2	8

*Data Source: ReddiNet

Reported Service Category Status Acute Care Hospitals w/ Emergency Departments (#25) Updated 10/7/20		
Status Item	Yes	%
Command Center Activated	12	48%
Surge Plan Activated	12	48%
Canceled Procedures/Services	4	16%
Supply Issues	2	8%
CDPH Flex	8	32%
Increased Morgue Capacity	14	56%

AGENCY OPERATIONS CENTER / LOGISTICS SECTION

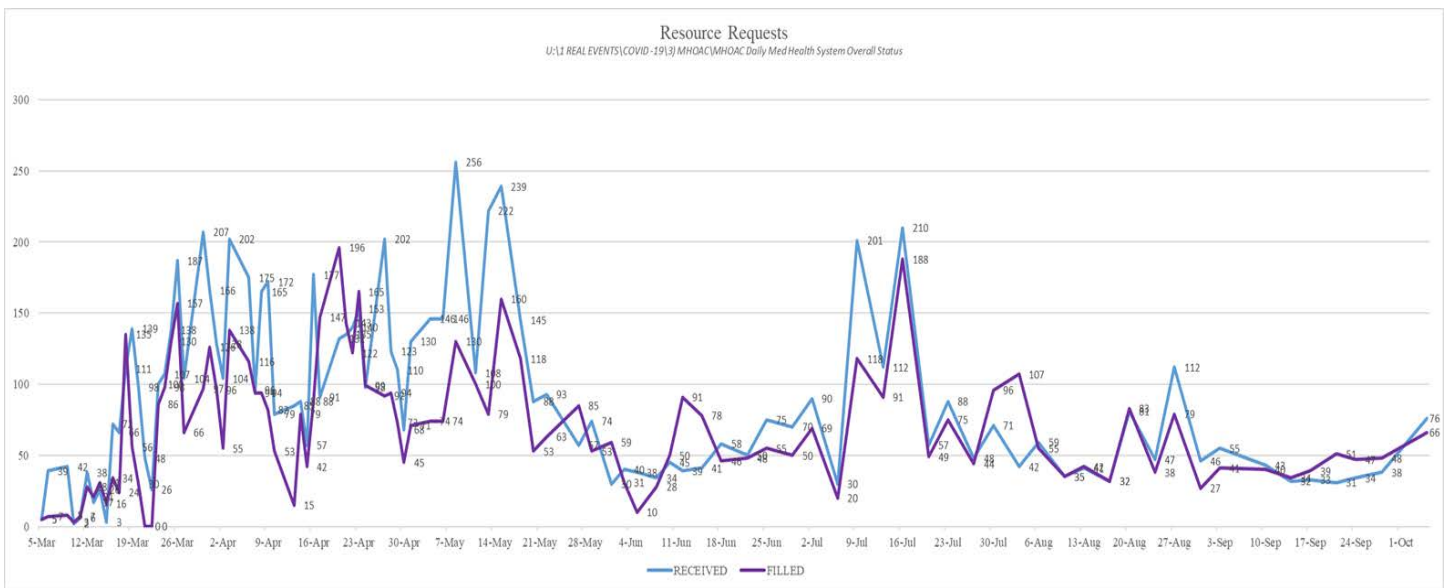
- Beginning the week of Sept. 28, 2020; The AOC will be activated at Level II on Mondays only - 0900-1600; Warehouse Ops will continue M-F - 0900-1600.
- The AOC will not be activated on **Monday, October 12th, 2020** due to a County holiday. Warehouse operations will also be closed and will resume on Tuesday, October 13th, 2020.
- SCARCE Resources: Gloves, Wipes

Total Activity – Updated 10/5/20		
INQUIRIES	RR RECEIVED	RR FILLED
14,752 +98	8,032 +76	6,281 +66
Total Denied Requests: 711 / Total Redacted Requests: 749		

**Orange County Emergency Medical Services
Medical Health Operational Area Coordination (MHOAC)**
Online at: <http://www.healthdisasteroc.org/ems/archive>
10/07/20

Logistics Daily Units Distributed 10-05-20	
N95 Mask	11,600
Surgical Mask	41,750
Gown	6,200
Gloves	106,900
Face Shields/Eye Protection	600
Hand Sanitizer	60
Other	571
Total Units	167,681

Inventory Report February 18 to October 5, 2020	
Medical Supply/Equipment Total Units Distributed	
N95 Mask	4,691,710
Surgical Mask	1,500,255
Gowns	1,664,561
PPE-Suit	17,955
Gloves	2,628,950
Eye Protection	293,847
Hand Sanitizer	305,845
Other Items	972,940
Total Units	12,076,063



ALTERNATE CARE SITE

*Site had a “warm” closure on September 30, 2020. A warm closure allows the ACS to be maintained in a semi-ready state. Appropriate resources will be kept at the ACS to enable the site to reopen within 72 hours if the need should arise.

*Data Source: ReddiNet

Fairview (COVID-19 +)		
Patient Census (as of 9/30/2020 07:30)	CURRENT	TOTAL
Orange County	0	76
Los Angeles County	0	36
San Diego County	0	1
Ventura County	0	2
Total patients CENSUS / TOTAL ACCEPTED	0	115
Patients Discharged		TOTAL
AMA		5
DISCHARGED		110
TRANSFERRED		0