

**Orange County Emergency Medical Services
Medical Health Operational Area Coordination (MHOAC)**
Online at: <http://www.healthdisasteroc.org/ems/archive>
10/28/20

OVERVIEW OF CURRENT SITUATION (10/28/20 1130) Source: Johns Hopkins University & Medicine <https://coronavirus.jhu.edu/map.html>

Cases / Deaths
 Worldwide: 44,304,816 / 1,171,119
 Nationwide: 8,817,851 / 227,320
 California: 916,689 / 17,483
 Orange Co: 59,213 / 1,497 Source: [Orange County COVID-19 Case Counts & Testing Figures](#)

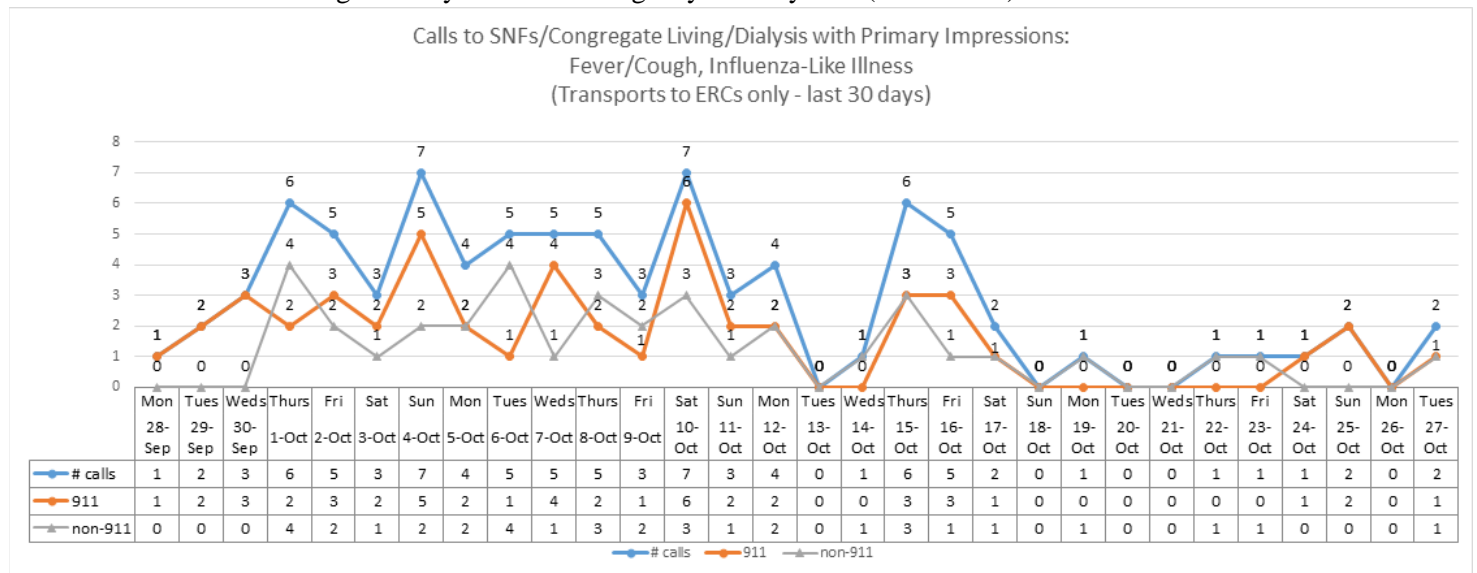
ORANGE COUNTY PUBLIC HEALTH (as of 10/28/20 1000)

Orange County COVID-19 Summary* click for full details	Sat 10/24/20	Sun 10/25/20	Mon 10/26/20	Tue 10/27/20	Wed 10/28/20	Thu 10/29/20	Fri 10/30/20
Cases Reported to Date	58,326	58,573	58,725	58,980	59,213		
Deaths Reported to Date	1,444	1,447	1,447	1,454	1,467		
Tests Reported Today	10,092	6,261	5,498	8,402	7,089		
Cumulative Tests to Date	1,055,089	1,061,350	1,066,848	1,075,250	1,082,339		

Data posted is always preliminary & subject to change. More information may become available as individual case investigations are completed. **LOCAL DATA MAY BE DIFFERENT FROM THE STATE WEBSITE DATA*

SKILLED NURSING/ASSISTED LIVING/RESIDENTIAL CARE FACILITY – TRENDS

*Data Source: Orange County Medical Emergency Data System (OC-MEDS)



*Data Source: California Department of Public Health (CDPH)

Reporting Date: 10/27/20 (72/73 SNFs reported)	Skilled Nursing Facility PPE – DAYS ON HAND*			
	0 - 3 days	4 - 7 days	8-14 days	15+ days
N95 Masks	0	3	13	56
Surgical Masks	0	3	10	59
Eye Protection	0	2	13	57
Gowns	0	2	11	59
Gloves	0	5	15	52
Alcohol-Based Hand Sanitizer	0	4	12	56

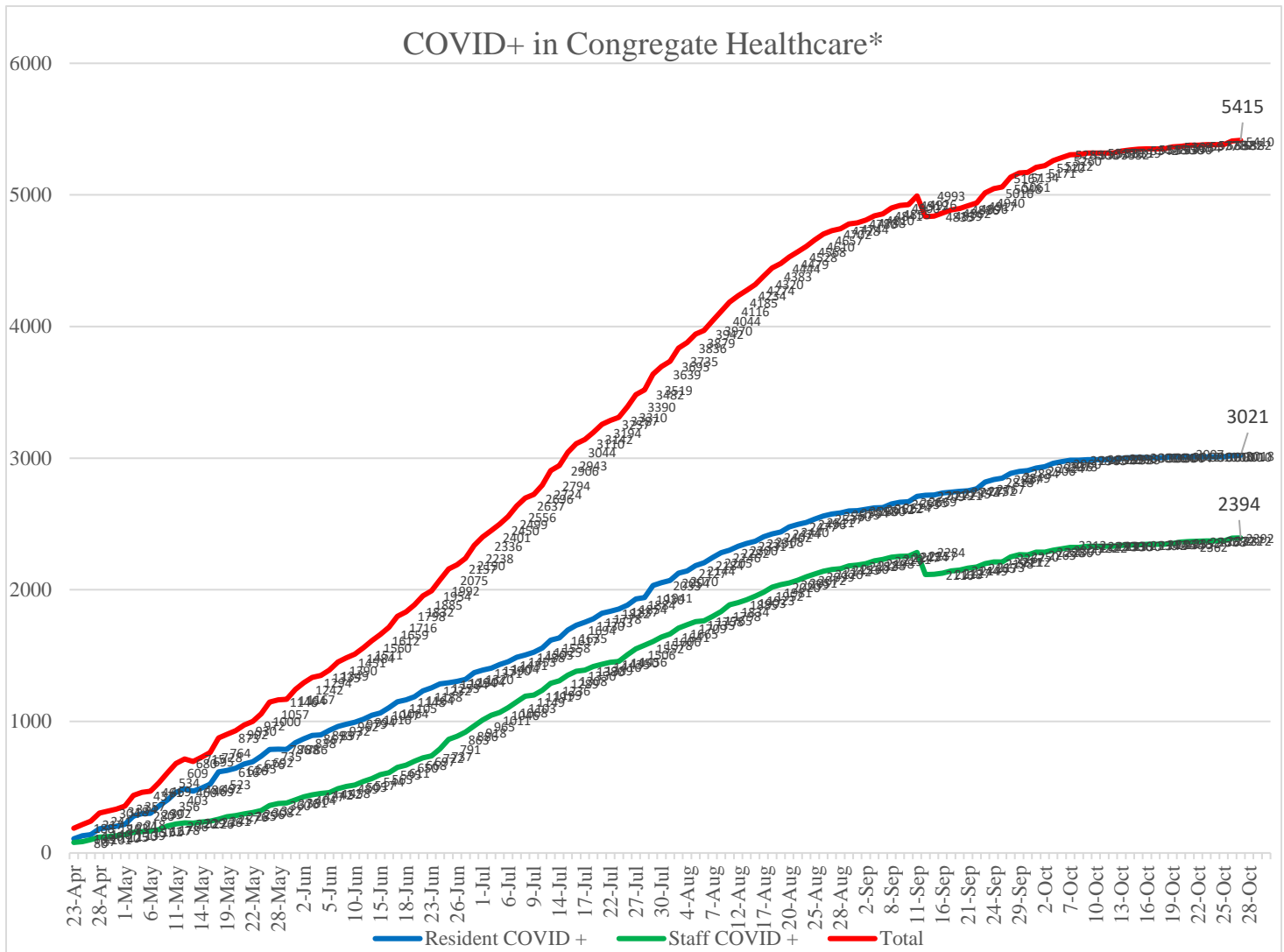
**Orange County Emergency Medical Services
Medical Health Operational Area Coordination (MHOAC)**

Online at: <http://www.healthdisasteroc.org/ems/archive>

10/28/20

*Data Source: Orange County Health Care Agency – Public Health

NOTE: Decrease in the COVID + in staff seen on graph is due to data being cleaned and removing duplicates of those that work in multiple OC facilities or are contract staff and care for residents at multiple facilities.



*Data Source: Orange County Health Care Agency – Public Health

Current Facility Outbreaks (as of 10/27/20 1700)

Facility Type by Licensing Category	#	An "Outbreak" is two (2) or more confirmed cases of COVID-19 in facility occurring within 14 days.
Skilled Nursing Facility	4	Alta Gardens Care Center, Gordon Lane Care Center, Sun Mar Nursing Center, The Pavilion At Sunny Hills
Elderly Assisted Living	11	Atria Del Sol, Brookdale San Juan Capistrano, Cambridge Court, Capriana (Oakmont), Crescendo Senior Living, Katella Senior Living Community Pearl Gardens, Rowntree Gardens, San Clemente Villas By The Sea, Silverado Brea Llc, Sunrise Of Huntington Beach, The Fountains At The Sea Bluffs

**Orange County Emergency Medical Services
Medical Health Operational Area Coordination (MHOAC)**
Online at: <http://www.healthdisasteroc.org/ems/archive>
10/28/20

EMERGENCY MEDICAL SERVICES STATUS

*Data Source: Orange County Medical Emergency Data System (OC-MEDS)

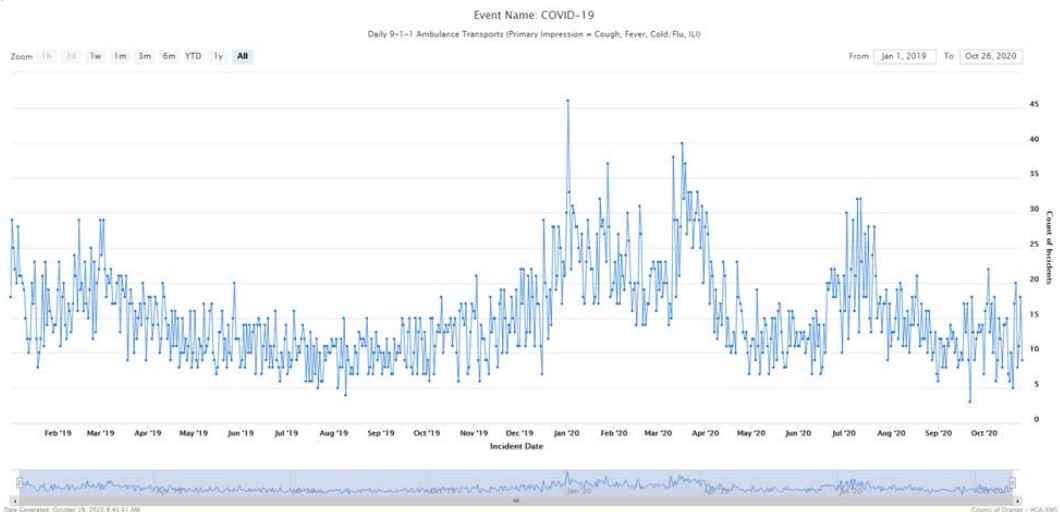
- 9-1-1 ambulance transport volume have been gradually increasing and are about 5-10% below normal (pre-COVID) levels overall.



- Non-emergency ambulance transports have remained stable and continue to average about 15-20% below normal (pre-COVID) levels.



- Primary Impressions of Cold/Flu/ILI by 9-1-1 EMS providers have been at or near baseline for the last several days.



**Orange County Emergency Medical Services
Medical Health Operational Area Coordination (MHOAC)**

Online at: <http://www.healthdisasteroc.org/ems/archive>

10/28/20

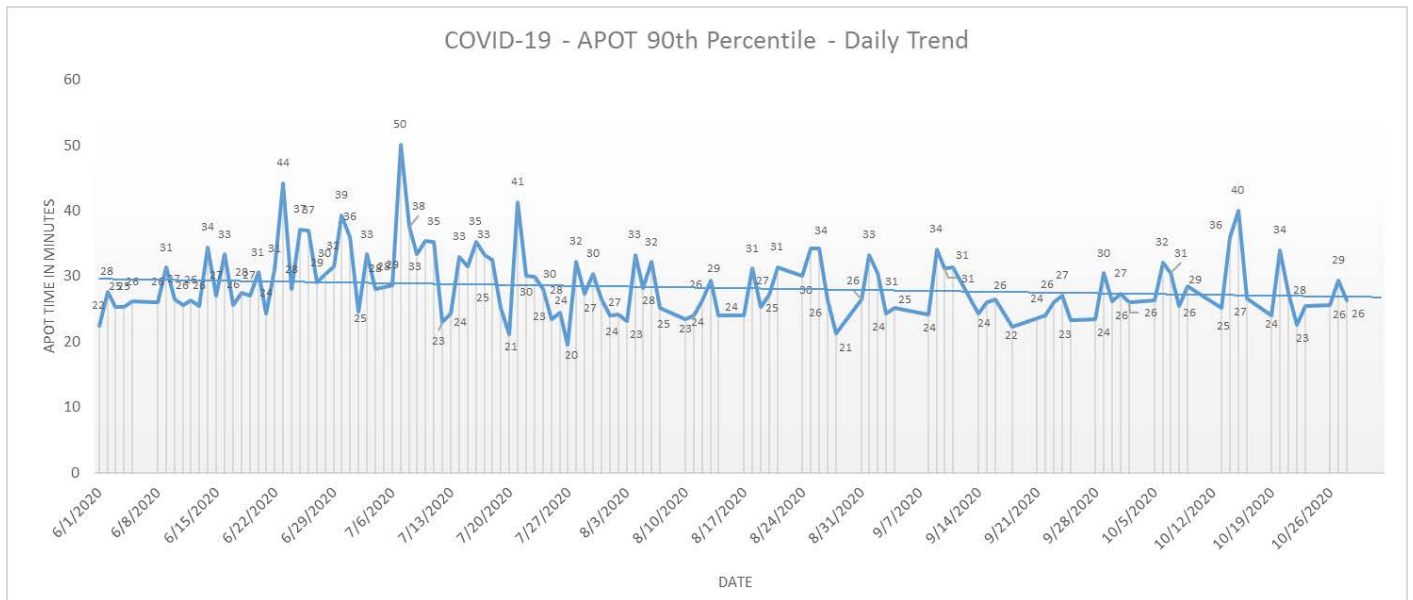
- Ambulance Patient Offload Time (APOT) is defined as the time the ambulance arrives at the receiving destination (wheels stop) to the time that the ambulance crew physically transfers the patient to the ED gurney. Last 24 hours: **Current Average APOT is: 12m59s / Current 90th Percentile APOT is: 26m27s**

The chart below displays a daily trend since June 1, 2020.

- Seven (7) ERCs had APOT times greater than thirty (30) minutes.
- Zero (0) ERCs had APOT times greater than sixty (60) minutes.

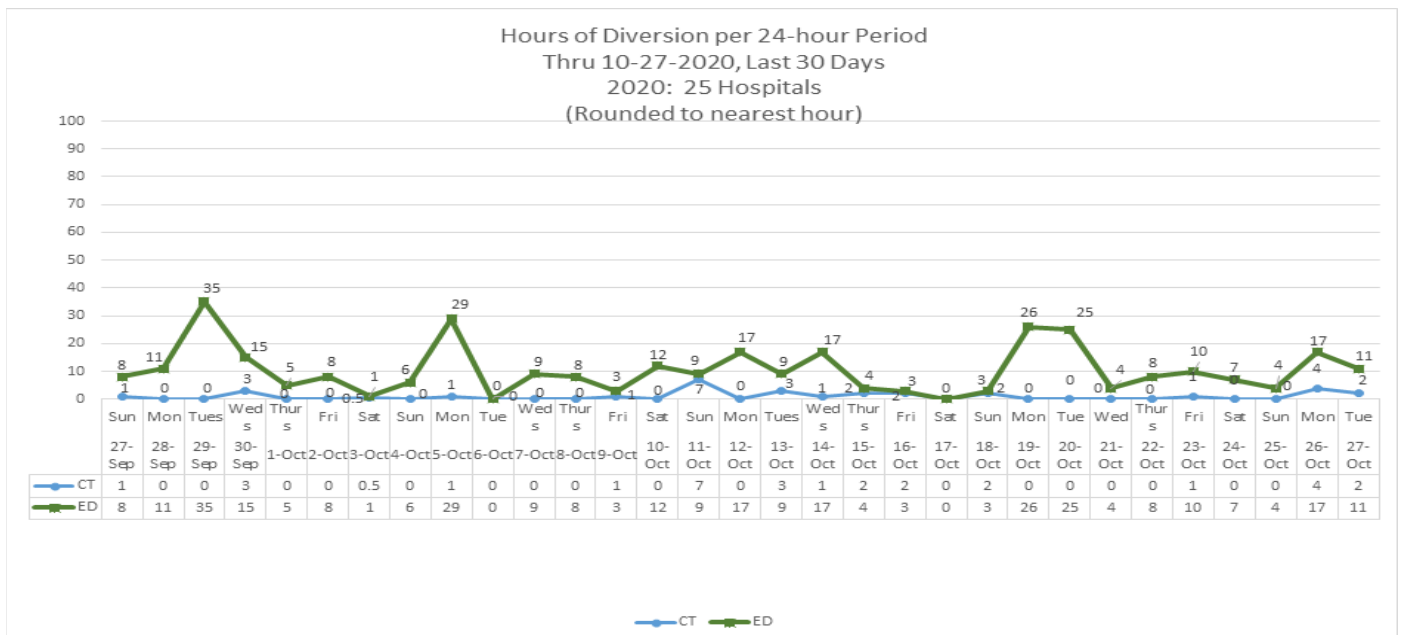
Note: a handful of ERCs were close to the 30 minute threshold, but were not over it.

*Data Source: Orange County Medical Emergency Data System (OC-MEDS)



- **Emergency Department (ED) Diversion & Computerized Tomography (CT) (ED closed to all ambulance transport due to no ED capacity or no CT available) for the last 30 days 9/27/20 – 10/27/20 below.**

*Data Source: ReddiNet



**Orange County Emergency Medical Services
Medical Health Operational Area Coordination (MHOAC)**

Online at: <http://www.healthdisasteroc.org/ems/archive>

10/28/20

(26): Anaheim Regional, Anaheim Global, Chapman Global, CHOC, CHOC at Mission, Foothill, Fountain Valley, Garden Grove, Hoag-Irvine, Hoag-Newport Beach, Huntington Beach, Kaiser-Anaheim, Kaiser-Irvine, La Palma, Los Alamitos, Mission –Laguna Beach, Mission-Mission Viejo, Orange Coast Memorial, Orange County Global, Placentia Linda, Saddleback Memorial, Saint Jude, South Coast Global, St. Josephs, UCI, West Anaheim

DATE	ALL HOSPITALS (33)						EMERGENCY RECEIVING CENTERS					
	Census ALL	Occupancy %	COVID+ Hospitalized	COVID+ ICU	% ICU Beds Available	% ICU Ventilators Available	Census ALL	Occupancy %	COVID+ Hospitalized	COVID+ ICU	% ICU Beds Available	% ICU Ventilators Available
10/7	3477	69%	172	62	31%	67%	3337	68%	172	62	31%	67%
10/8	3565	69%	176	64	31%	66%	3387	69%	176	64	31%	66%
10/9	3572	69%	169	61	32%	68%	3394	68%	169	61	32%	67%
10/10	3464	67%	164	57	35%	67%	3285	66%	164	57	35%	67%
10/11	3377	66%	167	56	31%	67%	3197	65%	167	56	31%	67%
10/12	3241	64%	160	57	36%	66%	3079	63%	160	57	36%	66%
10/13	3508	68%	165	60	33%	67%	3345	67%	165	60	33%	67%
10/14	3499	68%	164	66	34%	70%	3334	68%	164	66	34%	69%
10/15	3532	69%	170	66	36%	68%	3365	68%	170	66	36%	68%
10/16	3570	69%	159	56	35%	68%	3397	68%	159	56	35%	68%
10/17	3430	67%	162	59	35%	68%	3254	66%	162	59	35%	68%
10/18	3353	66%	168	63	36%	68%	3184	65%	168	63	36%	68%
10/19	3263	65%	168	63	36%	69%	3097	64%	168	63	36%	69%
10/20	3468	67%	174	66	36%	68%	3295	66%	174	66	36%	10/20
10/21	3588	70%	168	56	33%	68%	3414	69%	168	56	33%	10/21
10/22	3520	68%	162	58	33%	68%	3349	67%	162	58	33%	10/22
10/23	3446	65%	159	55	33%	70%	3287	65%	159	55	33%	10/23
10/24	3454	67%	150	55	35%	69%	3289	66%	150	55	35%	10/24
10/25	3356	66%	162	59	32%	70%	3199	65%	162	59	32%	10/25
10/26	3348	64%	157	56	35%	70%	3187	63%	157	56	35%	10/26
10/27	3507	66%	177	60	34%	68%	3351	65%	177	60	34%	10/27

*Data Source: California Department of Public Health (CDPH) – Snowflake server

*HHS significantly changed [reporting requirements](#) for hospitals effective 07/22/20.

Current data is posted on the CDPH website at:

<https://public.tableau.com/views/COVID-19HospitalsDashboard/Hospitals?%3Aembed=y&%3AshowVizHome=no>

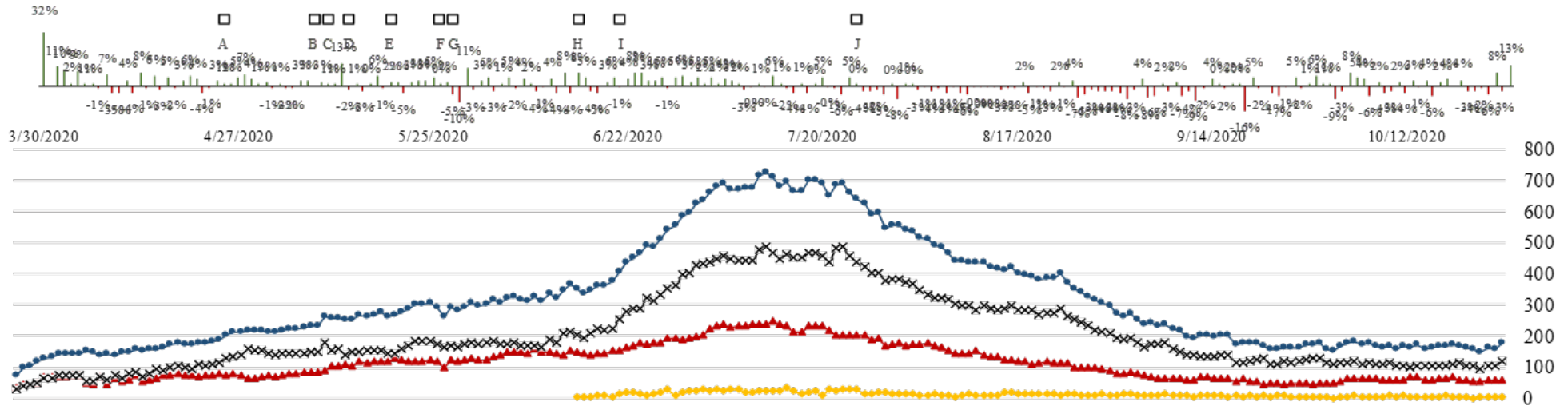
Orange County Emergency Medical Services Medical Health Operational Area Coordination (MHOAC)

Online at: <http://www.healthdisasteroc.org/ems/archive>

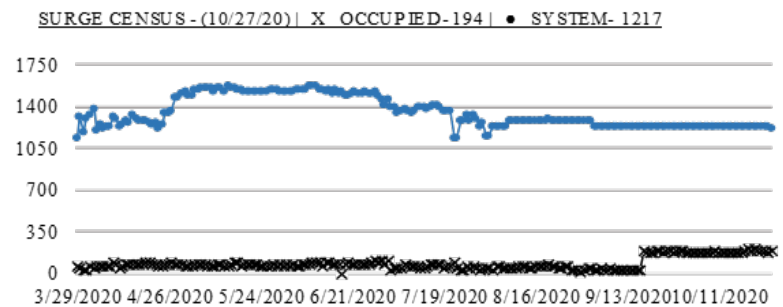
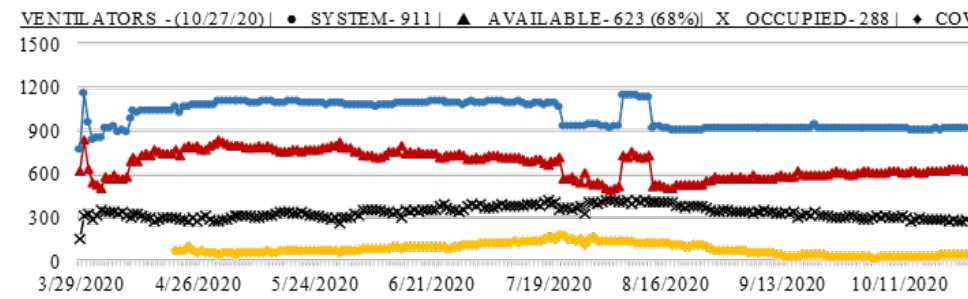
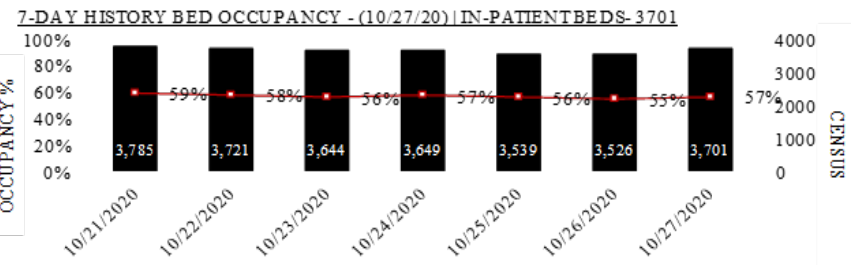
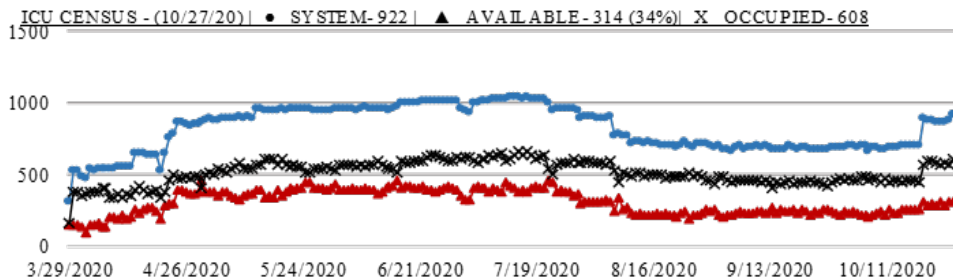
10/28/20

COVID 19 ORANGE COUNTY HOSPITAL SYSTEM DATA (CA SNOWFLAKE SERVER)

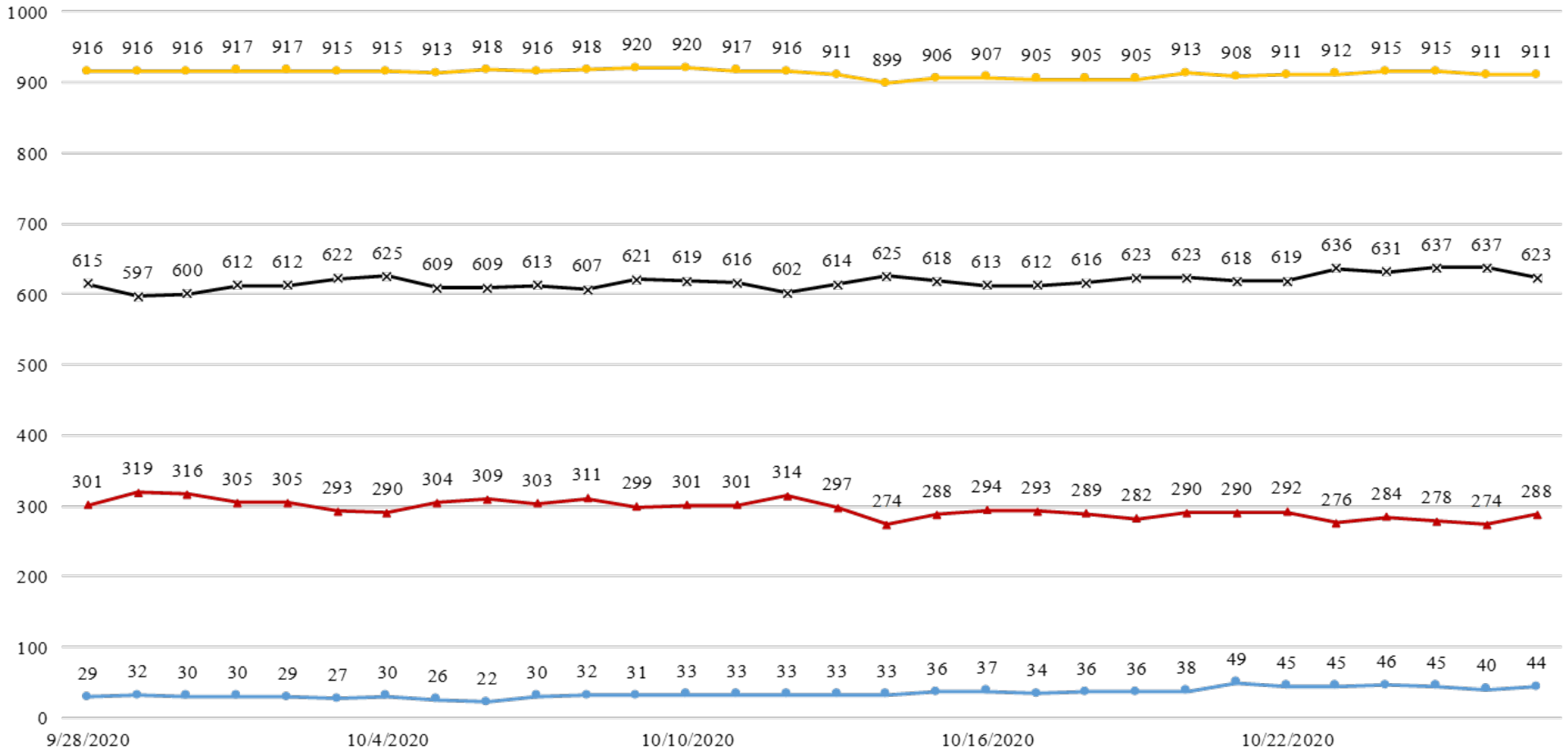
NON-ICU - 10/27/20 X			ICU - 10/27/20 ▲			ED OVERFLOW - 10/27/20 ▼			SYSTEM - 10/27/20 ●			1 DAY +/- (10/26/20) ▲			3 DAY +/- (10/25/20) ▲			7 DAY +/- (10/21/20) ▲		
117	16	15.8%	60	4	7.1%	4	1	33.3%	177	20	12.7%	177	20	12.7%	162	15	9.3%	168	9	5.4%



A. Face Covers Mandatory, B. Cinco de Mayo, C. OC Beaches Open, D. Mom's Day, E. OC Parks Parking Open, F. OC Stage 2 Approved, G. Memorial Day, H. Re-open entertainment, etc., I. CA Gov. Mask Mandate, J. Changes to data collection, Federal



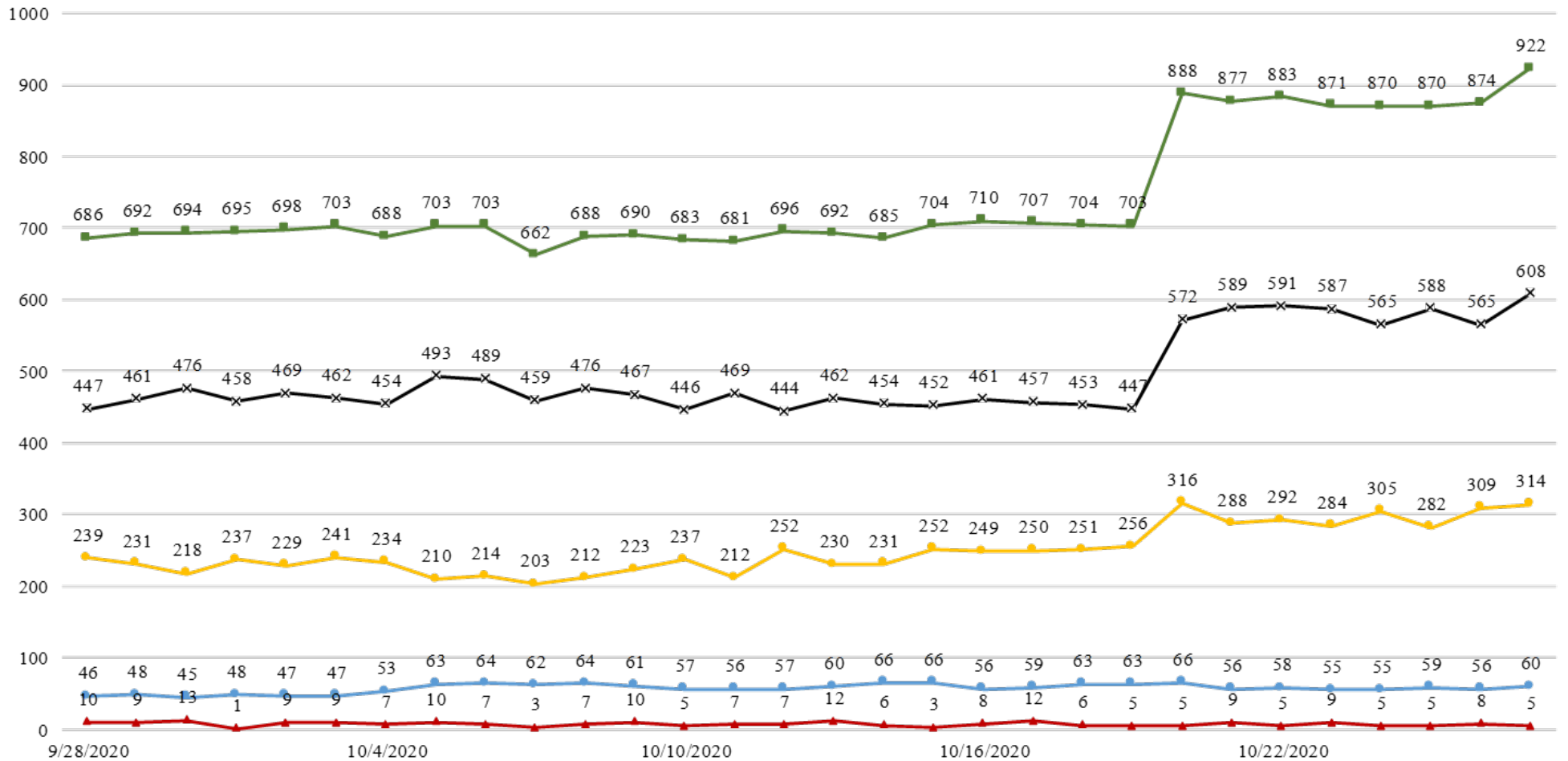
COVID 19 ORANGE COUNTY HOSPITAL SYSTEM DATA (CA SNOWFLAKE SERVER)
VENTILATORS IN USE (09/28/20 - 10/27/20) | 33 ACUTE CARE FACILITIES REPORTING



DATE	9/28	9/29	9/30	10/1	10/2	10/3	10/4	10/5	10/6	10/7	10/8	10/9	10/10	10/11	10/12	10/13	10/14	10/15	10/16	10/17	10/18	10/19	10/20	10/21	10/22	10/23	10/24	10/25	10/26	10/27
COVID+	29	32	30	30	29	27	30	26	22	30	32	31	33	33	33	33	33	36	37	34	36	36	38	49	45	45	46	45	40	44
SYSTEM OCC	301	319	316	305	305	293	290	304	309	303	311	299	301	301	314	297	274	288	294	293	289	282	290	290	292	276	284	278	274	288
SYSTEM AVL	615	597	600	612	612	622	625	609	609	613	607	621	619	616	602	614	625	618	613	612	616	623	623	618	619	636	631	637	637	623
SYSTEM TTL	916	916	916	917	917	915	915	913	918	916	918	920	920	917	916	911	899	906	907	905	905	905	913	908	911	912	915	915	911	911

COVID+ = CONFIRMED AND SUSPECTED PATIENTS ON A VENTILATOR
 *OCC = VENTILATORS IN USE, INCLUDING COVID+ PATIENTS AND OTHER VENT PATIENTS
 **AVL = AVAILABLE NON SURGE ICU BEDS
 ***TTL = TOTAL NON SURGE ICU BEDS

**COVID 19 ORANGE COUNTY HOSPITAL SYSTEM DATA (CA SNOWFLAKE SERVER)
ICU BEDS (09/28/20 - 10/27/20) | 33 ACUTE CARE FACILITIES REPORTING**



DATE	9/28	9/29	9/30	10/1	10/2	10/3	10/4	10/5	10/6	10/7	10/8	10/9	10/10	10/11	10/12	10/13	10/14	10/15	10/16	10/17	10/18	10/19	10/20	10/21	10/22	10/23	10/24	10/25	10/26	10/27
CONFIRMED	46	48	45	48	47	47	53	63	64	62	64	61	57	56	57	60	66	66	56	59	63	63	66	56	58	55	55	59	56	60
SUSPECTED	10	9	13	1	9	9	7	10	7	3	7	10	5	7	7	12	6	3	8	12	6	5	5	9	5	9	5	5	8	5
OCCUPIED	447	461	476	458	469	462	454	493	489	459	476	467	446	469	444	462	454	452	461	457	453	447	572	589	591	587	565	588	565	608
SYSTEM AVL	239	231	218	237	229	241	234	210	214	203	212	223	237	212	252	230	231	252	249	250	251	256	316	288	292	284	305	282	309	314
SYSTEM TTL	686	692	694	695	698	703	688	703	703	662	688	690	683	681	696	692	685	704	710	707	704	703	888	877	883	871	870	870	874	922

*AVL = AVAILABLE NON SURGE ICU BEDS. PRIOR TO 7/22 DEFINITION DID NOT EXCLUDE NONSURGE.
 **TTL = TOTAL NON SURGE ICU BEDS. PRIOR TO 7/22 DEFINITION DID NOT EXCLUDE NONSURGE.
 *** AS OF 10/20/2020 SPIKE IN SYSTEM TTL, OCCUPIED AND AVAILABLE DUE TO CHANGE IN CHOC ORANGE REPORTED VALUES.

**Orange County Emergency Medical Services
Medical Health Operational Area Coordination (MHOAC)**

Online at: <http://www.healthdisasteroc.org/ems/archive>

10/28/20

- *Data Source: California Department of Public Health (CDPH) – Snowflake server
- *HHS significantly changed [reporting requirements](#) for hospitals effective 07/22/20.
- **CDPH updated how PPE and ventilator supplies are counted on 8/13/20. Count of PAPRs are no longer available. This table has been updated based on data provided by hospitals using the new HHS data standards

Reporting Date: 10/26/20* (33/33 ACHs reported)	Acute Care Hospital PPE / Ventilator Supplies – DAYS ON HAND					
	30 days +	15-30 days	7-14 days	4-6 days	0-3 days	Not Reported
Ventilator Supplies**	3	6	15	2	1	6
N95 Masks**	16	8	4	1	0	4
Surgical Masks**	15	6	7	1	0	4
Face Shields**	15	7	5	1	1	4
Gloves**	9	8	10	2	1	3
Gowns**	11	11	5	1	1	4

*Data Source: ReddiNet

Reported Service Category Status Acute Care Hospitals w/ Emergency Departments (#25) Updated 10/28/20		
Status Item	Yes	%
Command Center Activated	15	60%
Surge Plan Activated	13	52%
Canceled Procedures/Services	3	12%
Supply Issues	7	28%
CDPH Flex	10	40%
Increased Morgue Capacity	16	64%

AGENCY OPERATIONS CENTER / LOGISTICS SECTION

- The AOC is activated weekly at Level II on Mondays only - 0900-1600; Warehouse Ops are M-F - 0900-1600.
- SCARCE Resources: Gloves, Wipes

Total Activity – Updated 10/26/20		
INQUIRIES	RR RECEIVED	RR FILLED
14,945 +56	8,225 + 62	6,466 +60
Total Denied Requests: 711 / Total Redacted Requests: 756		

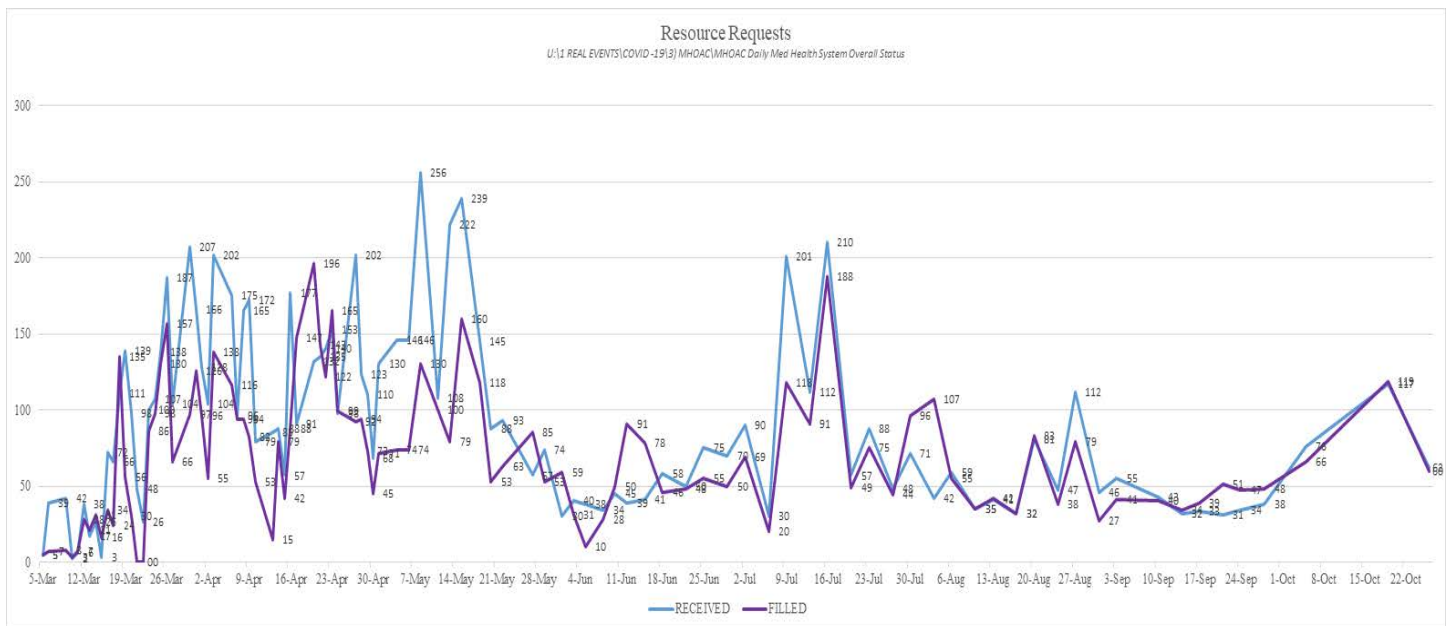
**Orange County Emergency Medical Services
Medical Health Operational Area Coordination (MHOAC)**

Online at: <http://www.healthdisasteroc.org/ems/archive>

10/28/20

Logistics Daily Units Distributed 10-26-20	
N95 Mask	32,760
Surgical Mask	15,800
Gown	3,200
Gloves	31,000
Face Shields/Eye Protection	7,000
Hand Sanitizer	150
Other	28,023
Total Units	117,933

Inventory Report February 18 to October 26, 2020	
Medical Supply/Equipment Total Units Distributed	
N95 Mask	4,760,930
Surgical Mask	1,566,105
Gowns	1,703,611
PPE-Suit	17,955
Gloves	2,860,750
Eye Protection	308,307
Hand Sanitizer	306,110
Other Items	1,040,074
Total Units	12,563,842



ALTERNATE CARE SITE

*Site had a “warm” closure on September 30, 2020. A warm closure allows the ACS to be maintained in a semi-ready state. Appropriate resources will be kept at the ACS to enable the site to reopen within 72 hours if the need should arise.

*Data Source: ReddiNet

Fairview (COVID-19 +)		
Patient Census (as of 9/30/2020 07:30)	CURRENT	TOTAL
Orange County	0	76
Los Angeles County	0	36
San Diego County	0	1
Ventura County	0	2
Total patients CENSUS / TOTAL ACCEPTED	0	115
Patients Discharged		TOTAL
AMA		5
DISCHARGED		110
TRANSFERRED		0