

**OVERVIEW OF CURRENT SITUATION (1/11/21 1122)**

Source: Johns Hopkins University & Medicine <https://coronavirus.jhu.edu/map.html>

Cases / Deaths  
Worldwide: 90,673,898 / 1,940,321  
Nationwide: 22,515,032 / 375,239  
California: 2,721,243 / 30,020  
Orange Co: 191,861 / 2,120 Source: [Orange County COVID-19 Case Counts & Testing Figures](#)

**ORANGE COUNTY PUBLIC HEALTH (as of 1/11/21 1200)**

**Orange County COVID-19 Summary\* click for full details**

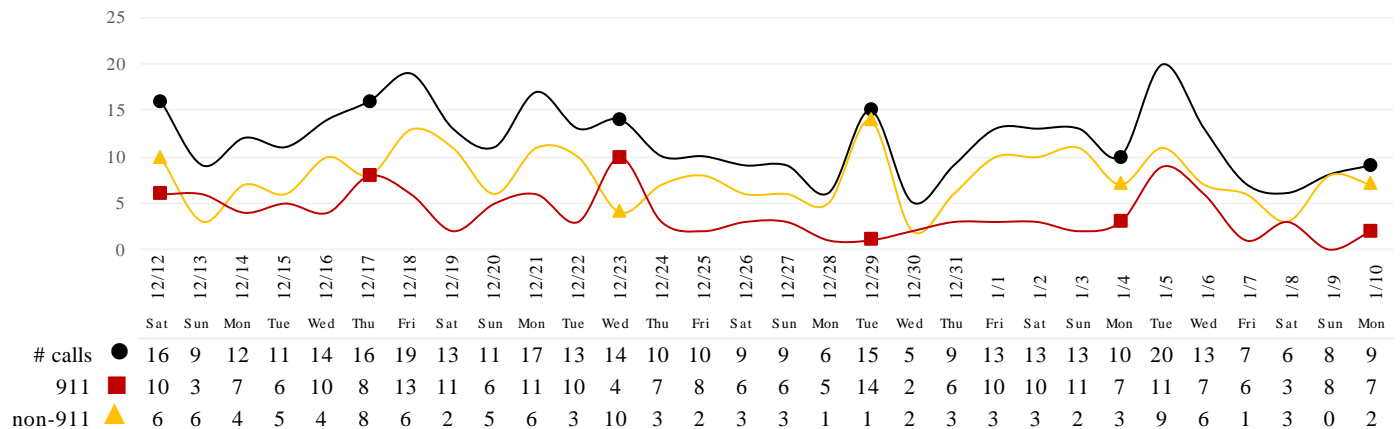
	Sat 1/9/21	Sun 1/10/21	Mon 1/11/21	Tue 1/12/21	Wed 1/13/21	Thu 1/14/21	Fri 1/15/21
Cases Reported to Date	185,481	188,602	191,861				
Deaths Reported to Date	2,041	2,091	2,120				
Tests Reported Today	17,080	33,470	26,231				
Cumulative Tests to Date	2,223,962	2,257,432	2,283,663				

\*Data posted is always preliminary & subject to change. More information may become available as individual case investigations are completed. **LOCAL DATA MAY BE DIFFERENT FROM THE STATE WEBSITE DATA.**

**SKILLED NURSING/ASSISTED LIVING/RESIDENTIAL CARE FACILITY – TRENDS**

\*Data Source: Orange County Medical Emergency Data System (OC-MEDS) – Updated 1/10/21

**Calls to SNFs/Congregate Living with Primary Impressions: Fever/Cough, Influenza-like Illnesses  
(Transports to ERCs Only - Last 30 Days)**



\*Data Source: California Department of Public Health (CDPH)

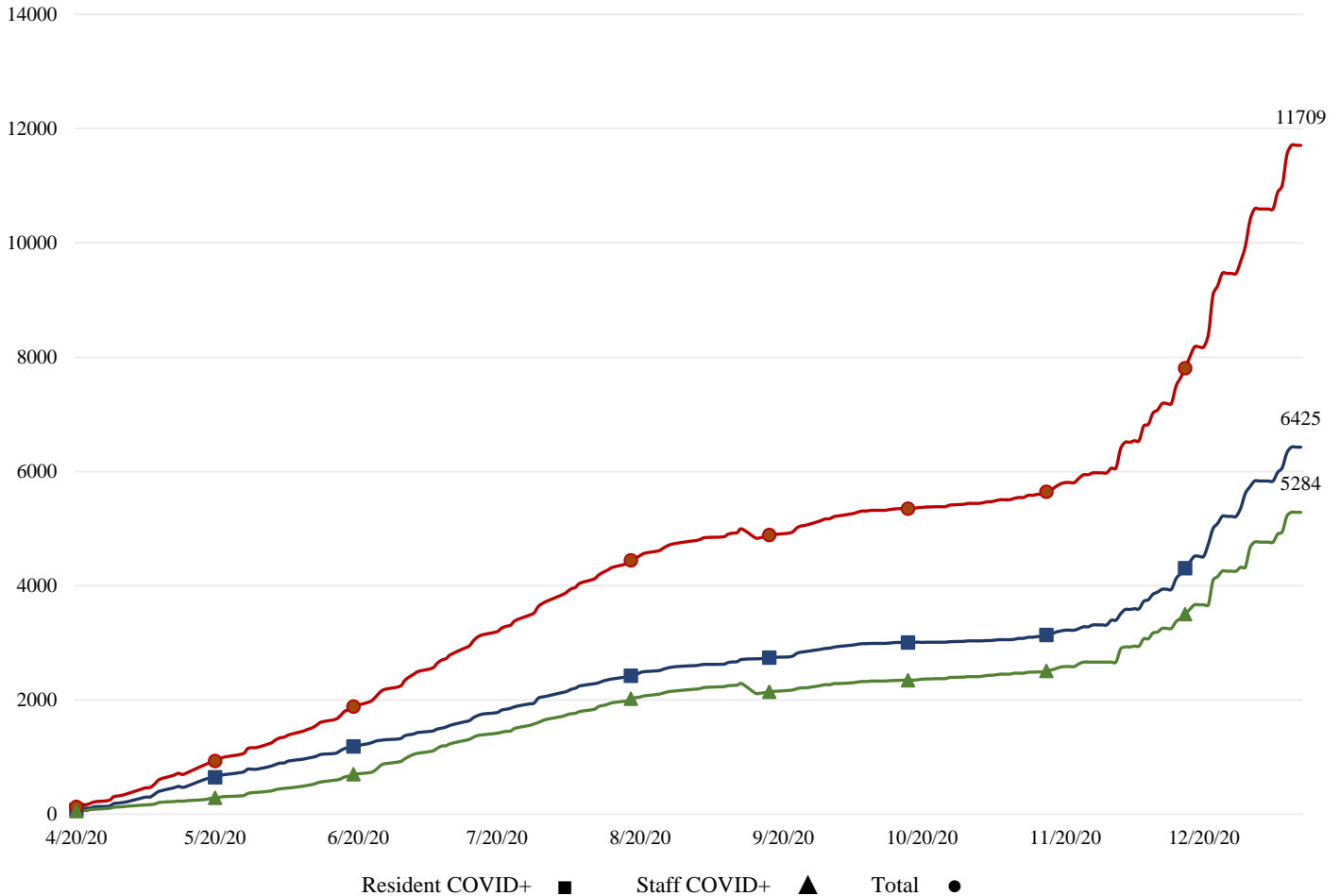
**Skilled Nursing/Assisted Living/Residential Care Facility PPE / Ventilator Supplies Days on Hand  
(66/73 SNFs reported)**

Reporting Date: 1/10/2021	0 - 3 days	4 - 7 days	8-14 days	15+ days
N95 Masks	0	2	11	53
Surgical Masks	0	2	10	54
Eye Protection	0	3	9	54
Gowns	0	3	10	53
Gloves	0	3	10	53
Alcohol-Based Hand Sanitizer	0	3	10	53

\*Data Source: Orange County Health Care Agency – Public Health

\*\*NOTE\*\*: Decrease in the COVID + in staff seen on graph is due to data being cleaned and removing duplicates of those that work in multiple OC facilities or are contract staff and care for residents at multiple facilities.

### COVID+ in Congregate Healthcare\*



\*Data Source: Orange County Health Care Agency – Public Health

### Current Facility Outbreaks (as of 1/11/21 1000)

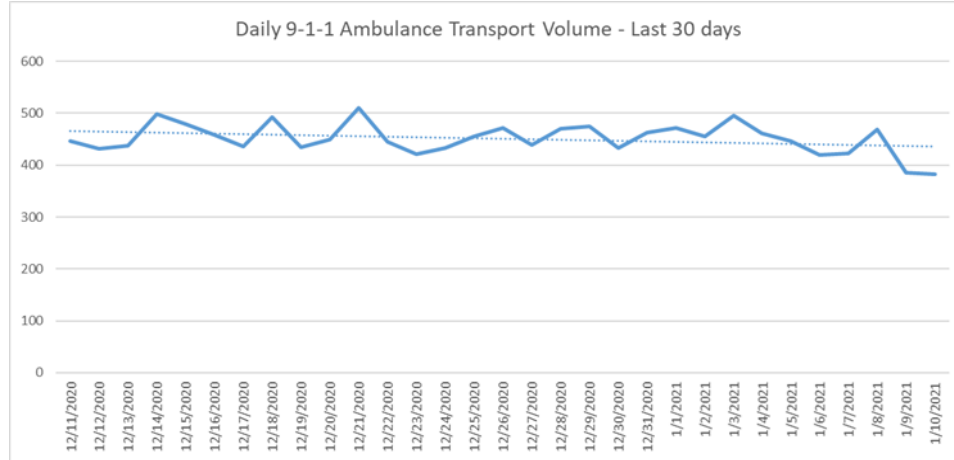
An "Outbreak" is two (2) or more confirmed cases of COVID-19 in facility occurring within 14 days.

Facility Type by Licensing Category, Count		Facility Name Alphabetical
Skilled Nursing Facility	41	Alamitos West Health & Rehabilitation, Alta Gardens Care Center, Anaheim Crest Nursing Center, Anaheim Terrace Care Center, Buena Park Nursing Center, Buena Vista Care Center, Country Villa Plaza Convalescent Center, Coventry Court Health Center, Extended Care Hospital Of Westminster, Flagship Healthcare Center, Freedom Village Healthcare Center, French Park Care Center, Garden Grove Convalescent Hospital, Garden Park Care Center, Gordon Lane Care Center, La Palma Nursing Center, Laguna Hills Health And Rehabilitation Center, Lake Forest Nursing Center, Leisure Court Nursing Center, Mainplace Post Acute, Manorcare Health Services (Fountain Valley), Mission Palms Healthcare Center, New Orange Hills, Newport Subacute Healthcare Center, Park Anaheim Healthcare Center, Park Regency Care Center, Park Vista At Morningside (Snf), Rowntree Gardens Elmwood, Seal Beach Health And Rehabilitation Center, Serento Rosa (Snf), South Coast Post Acute, St. Edna Subacute And Rehabilitation Center, St. Elizabeth Healthcare Center, Stanley Healthcare Center, Sun Mar Nursing Center, The Hills Post Acute, The Pavilion At Sunny Hills, Town And Country Manor, Victoria Healthcare And Rehabilitation Center, West Anaheim Extended Care, Windsor Gardens Convalescent Center Of Anaheim
Elderly Assisted Living	25	Aegis Assisted Living Of Laguna Niguel, Atria Golden Creek, Atria Newport Beach, B&C Anaheim Guest House, Brookdale Valley View, Carmel Village Retirement Community, Freedom Village, Fullerton Villa, Garden Grove Guest Home, Heritage Pointe, Kirkwood Orange, La Vida At Mission Viejo, Oakmont Of Huntington Beach, Palm Retirement Center, Seaside Terrace Retirement Community, Silverado Brea Llc, Silverado Senior Living - Newport Mesa, Silverado Senior Living - San Juan Capistrano, Steadfast (Chopin), Steadfast (Western), Sunflower Gardens, Sunrise Assisted Living Of Fullerton, Sunrise Haven, Sunrise Of Mission Viejo, Woodbridge Terrace Of Irvine

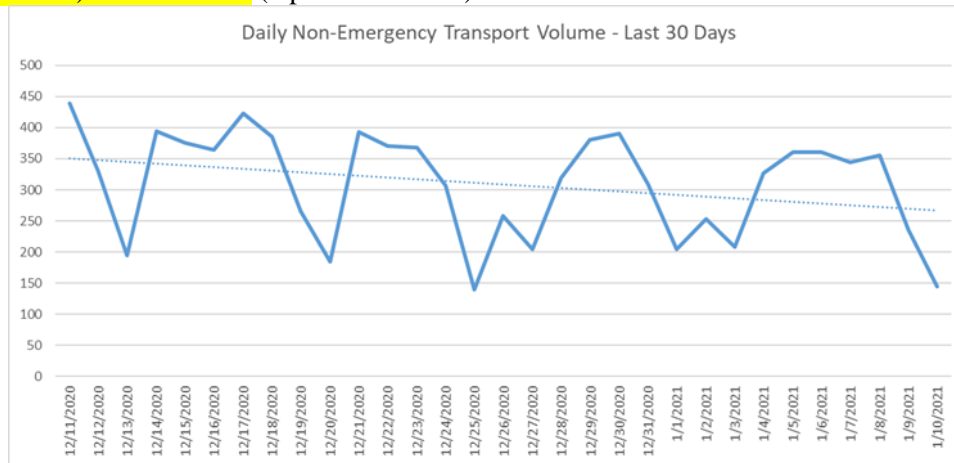
## EMERGENCY MEDICAL SERVICES STATUS

\*Data Source: Orange County Medical Emergency Data System (OC-MEDS)

9-1-1 ambulance transport volume were lower the last couple days. Volume is averaging about 5% below normal (pre-COVID) levels (Updated 1/11/21).

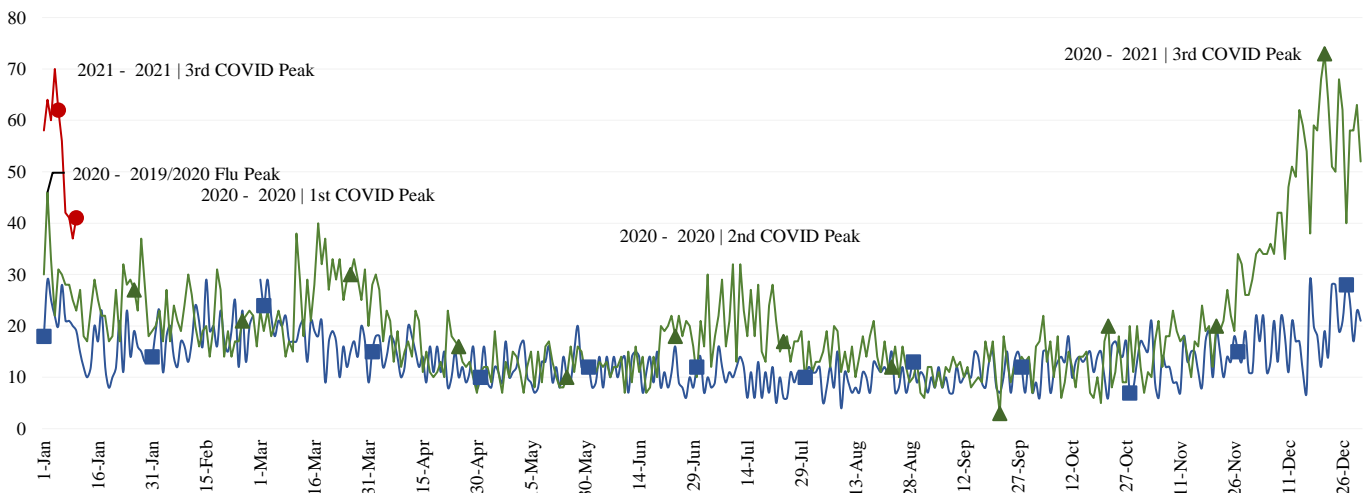


Non-emergency ambulance transports have continued far lower than normal. Transport volume is averaging about 30-35% below normal (pre-COVID) levels overall (Updated 1/11/21).



Primary Impressions of Cold/Flu/ILI by 9-1-1 EMS providers has declined over the last few days. (Updated 1/11/21).

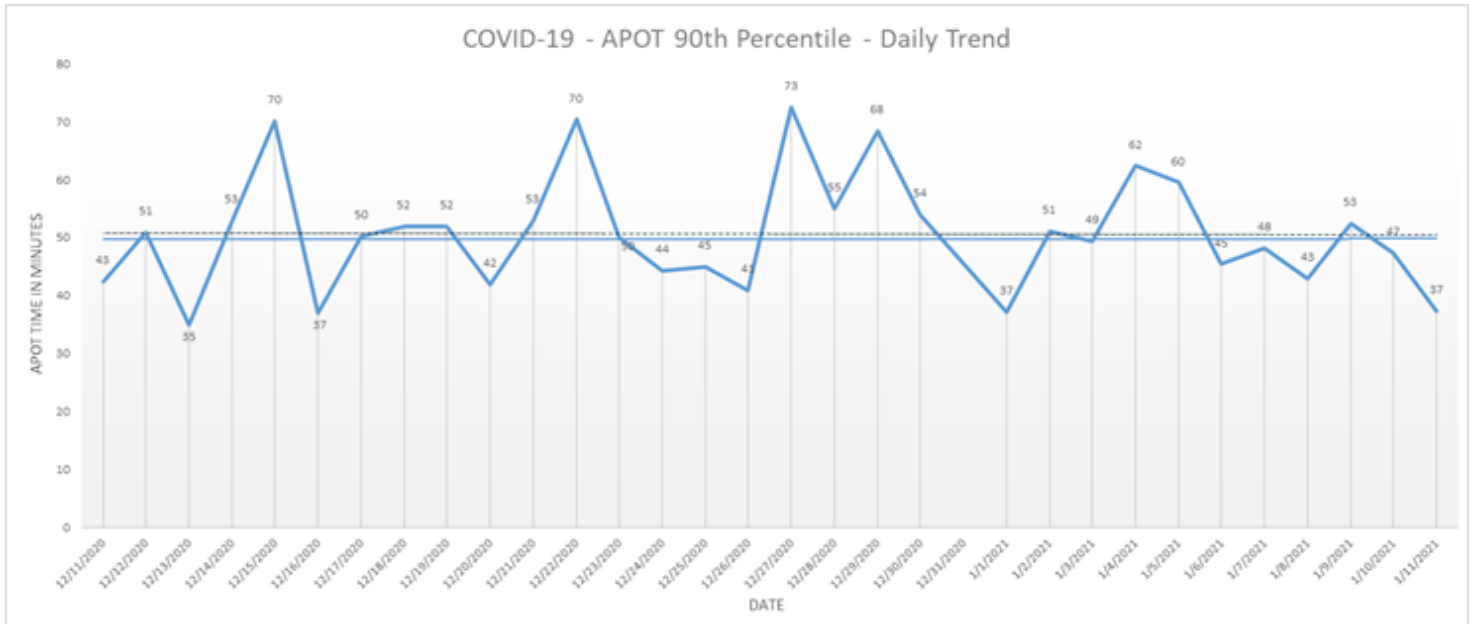
## EMS Provider Impressions - Cold/Flu/ILI/COVID-19 Year Over Year Comparison (2019 ■, 2020 ▲, & 2021 ●)



- Ambulance Patient Offload Time (APOT) is defined as the time the ambulance arrives at the receiving destination (wheels stop) to the time that the ambulance crew physically transfers the patient to the ED gurney. Last 24 hours: **Current Average APOT is: 17m31s / Current 90th Percentile APOT is: 37m44s**

The chart below displays a daily trend over the last 30 days.

- Thirteen (13) ERCs had APOT times greater than thirty (30) minutes.
- Six (6) ERCs had APOT times greater than sixty (60) minutes.



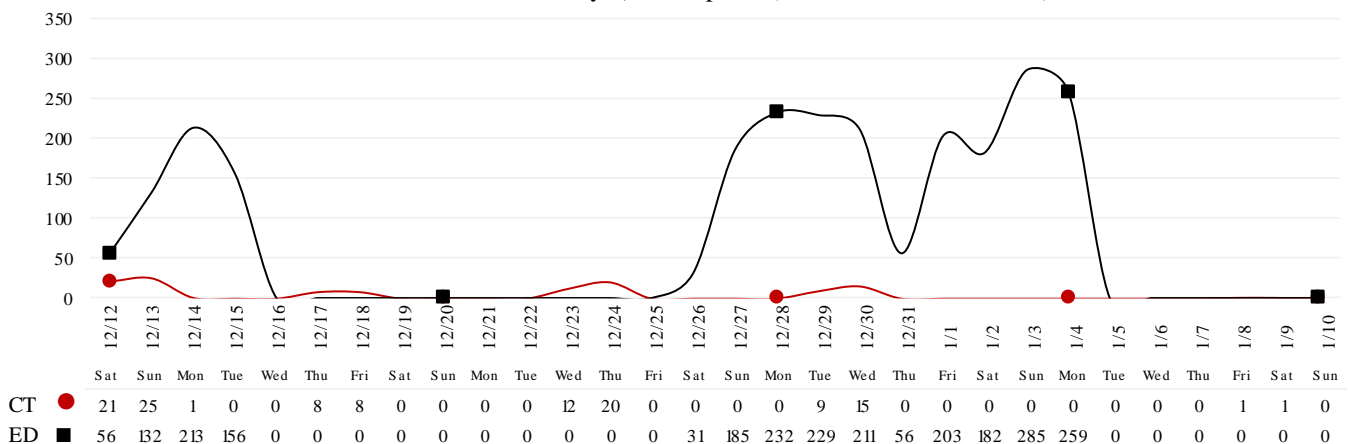
*Note: a handful of ERCs were close to the 30 minute threshold, but were not over it.*

\*Data Source: Orange County Medical Emergency Data System (OC-MEDS)

- Emergency Department (ED) Diversion & Computerized Tomography (CT) (ED closed to all ambulance transport due to no ED capacity or no CT available) for the last 30 days 12/12/20 – 1/10/21 below.
- NOTE: Suspension of Hospital Diversion was reinstated, 1/4/21, @ 1900.**

\*Data Source: ReddiNet

**Hours of Diversion per 24-Hour Period**  
 Thru 01-10-2021, Last 30 Days | 25 Hospitals (Rounded to nearest hour)



1/11/21

**26):** Anaheim Regional, Anaheim Global, Chapman Global, CHOC, CHOC at Mission, Foothill, Fountain Valley, Garden Grove, Hoag-Irvine, Hoag-Newport Beach, Huntington Beach, Kaiser-Anaheim, Kaiser-Irvine, La Palma, Los Alamitos, Mission-Laguna Beach, Mission-Mission Viejo, Orange Coast Memorial, Orange County Global, Placentia Linda, Saddleback Memorial, Saint Jude, South Coast Global, St. Josephs, UCI, West Anaheim

\*Data Source: California Department of Public Health (CDPH) – Snowflake server

Current Snowflake Data Dictionary may be found at:

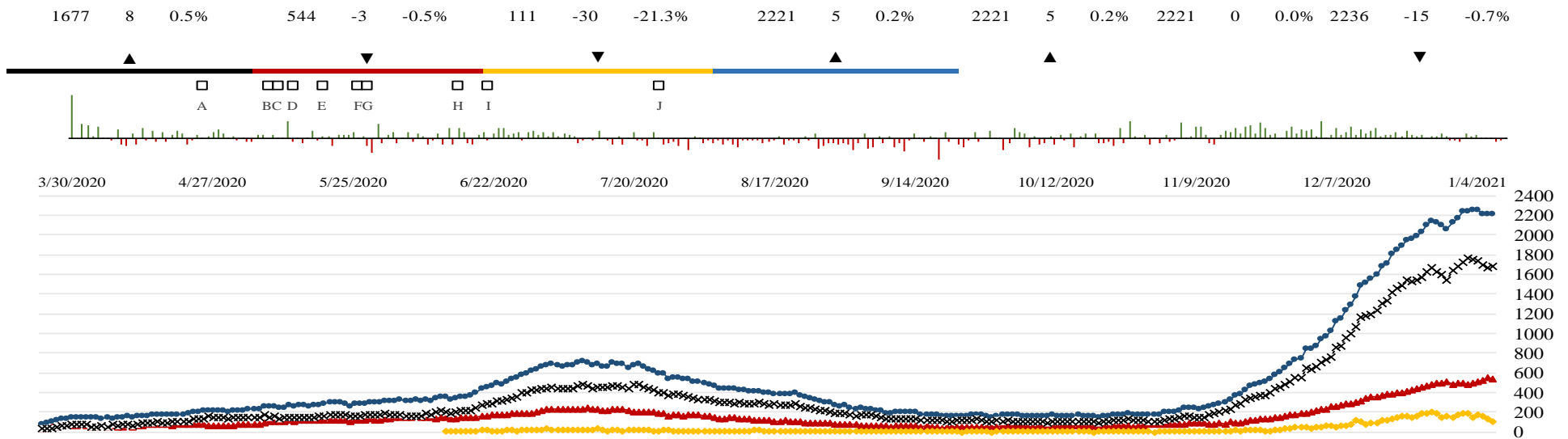
[https://www.calhospital.org/sites/main/files/file-attachments/data\\_dictionary\\_cha\\_covid\\_tracker\\_4-17-20.pdf](https://www.calhospital.org/sites/main/files/file-attachments/data_dictionary_cha_covid_tracker_4-17-20.pdf)

ALL HOSPITALS (33)															
DATE	Census ALL	Occupancy % *****	COVID+ Hospitalized	COVID+ ICU	ICU Occupied Adult	ICU Available Adult	% ICU Beds Adult Available	ICU Occupied Peds	ICU Available Peds	% ICU Beds Peds Available	ICU CDPH OC Occupied **	ICU CDPH OC Available ***	% ICU CDPH OC Available ****	% ICU Beds System Available *****	% Ventilators Available
12/24	4202	76%	1955	417	607	50	8%	24	44	65%	725	94	13%	24%	44%
12/25	4098	75%	1957	432	611	45	7%	20	48	71%	724	93	13%	24%	45%
12/26	4026	75%	1990	443	591	54	8%	23	45	66%	713	99	14%	25%	45%
12/27	4181	77%	2031	453	609	46	7%	22	46	68%	723	92	13%	24%	42%
12/28	4167	76%	2106	473	578	64	10%	25	43	63%	710	107	15%	26%	42%
12/29	4296	77%	2145	479	609	46	7%	44	24	35%	723	70	10%	22%	40%
12/30	4301	78%	2128	495	628	47	7%	31	37	54%	743	84	11%	22%	40%
12/31	4272	77%	2097	501	624	58	9%	30	38	56%	750	96	13%	22%	39%
1/1	4181	75%	2057	506	623	52	8%	34	34	50%	743	86	12%	22%	37%
1/2	4161	75%	2136	487	605	48	7%	33	35	51%	721	83	12%	22%	35%
1/3	4241	76%	2178	500	628	46	7%	30	38	56%	742	84	11%	22%	33%
1/4	4223	76%	2236	504	625	40	6%	20	48	71%	733	88	12%	22%	31%
1/5	4320	77%	2249	485	635	47	7%	30	38	56%	750	85	11%	21%	32%
1/6	4354	78%	2251	502	630	41	6%	29	39	57%	739	80	11%	21%	33%
1/7	4394	78%	2259	514	638	34	5%	27	41	60%	740	75	10%	21%	34%
1/8	4411	80%	2221	528	601	37	6%	27	41	60%	706	78	11%	21%	34%
1/9	4363	79%	2216	547	605	45	7%	18	50	74%	718	95	13%	23%	36%
1/10	4403	80%	2221	544	608	42	6%	26	42	62%	718	84	12%	23%	35%

\*\*ICU CDPH OC Occupied – CDPH combines occupied ICU adult beds and occupied ICU pediatric beds as a reporting metric on their COVID-19 Hospital dashboard. \*\*\*ICU CDPH OC Available – CDPH subtracts the sum of occupied ICU adult beds and occupied ICU pediatric beds, from the sum of ICU total adult beds and ICU total pediatric beds to determine ICU available beds on their COVID-19 Hospital dashboard. \*\*\*\*% ICU CDPH OC Available – The sum of occupied ICU adult beds and occupied ICU pediatric beds, divided by the sum of ICU total adult beds and ICU total pediatric beds, as a percentage. \*\*\*\*\* ICU Beds System Available – All ICU beds reported as available in Orange County, which includes Adult, PICU, and NICU, and any other ICU bed types. \*\*\*\*\* Occupancy % - Census all, divided by system beds total, excluding surge capacity.

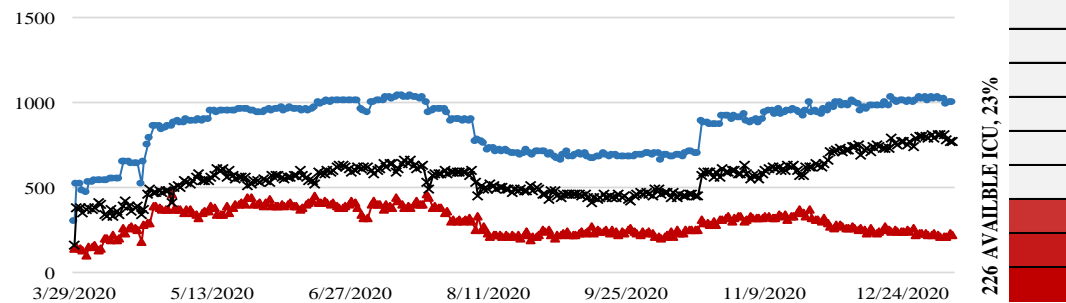
1/11/21

**COVID 19 ORANGE COUNTY HOSPITAL SYSTEM DATA (CA SNOWFLAKE SERVER)**

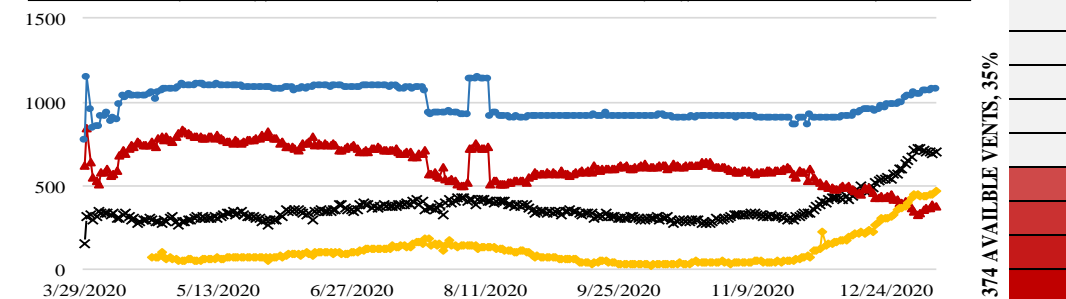


A.Face Covers Mandatory, B. Cinco de Mayo, C. OC Beaches Open, D. Mom's Day, E. OC Parks Parking Open, F. OC Stage 2 Approved, G. Memorial Day, H. Re-open entertainment, etc., I. CA Gov. Mask Mandate, J. Changes to data collection, Federal

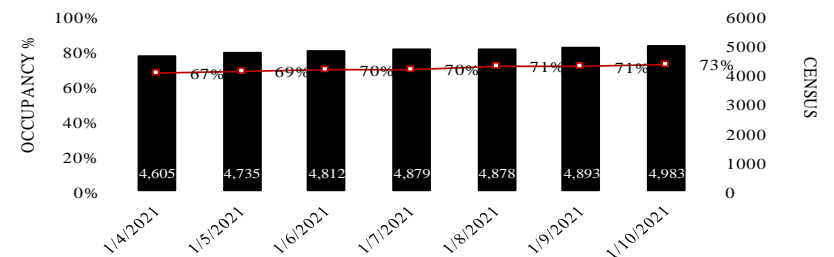
ICU CENSUS - (01/10/21) | ● SYSTEM-998 | ▲ AVAILABLE-226 (23%) | X OCCUPIED-772



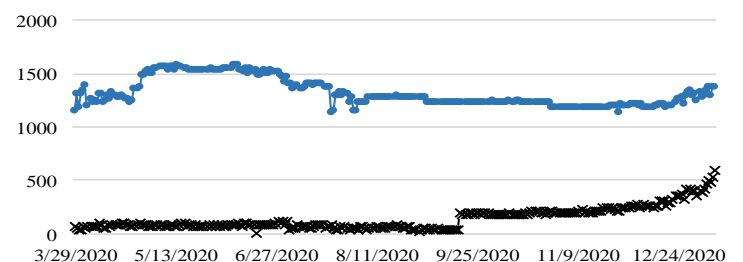
VENTILATORS - (01/10/21) | ● SYSTEM-1073 | ▲ AVAILABLE-374 (35%) | X OCCUPIED-699 | ◆ COVID



7-DAY HISTORY BED OCCUPANCY - (01/10/21) | IN-PATIENT BEDS-4983 (73%)

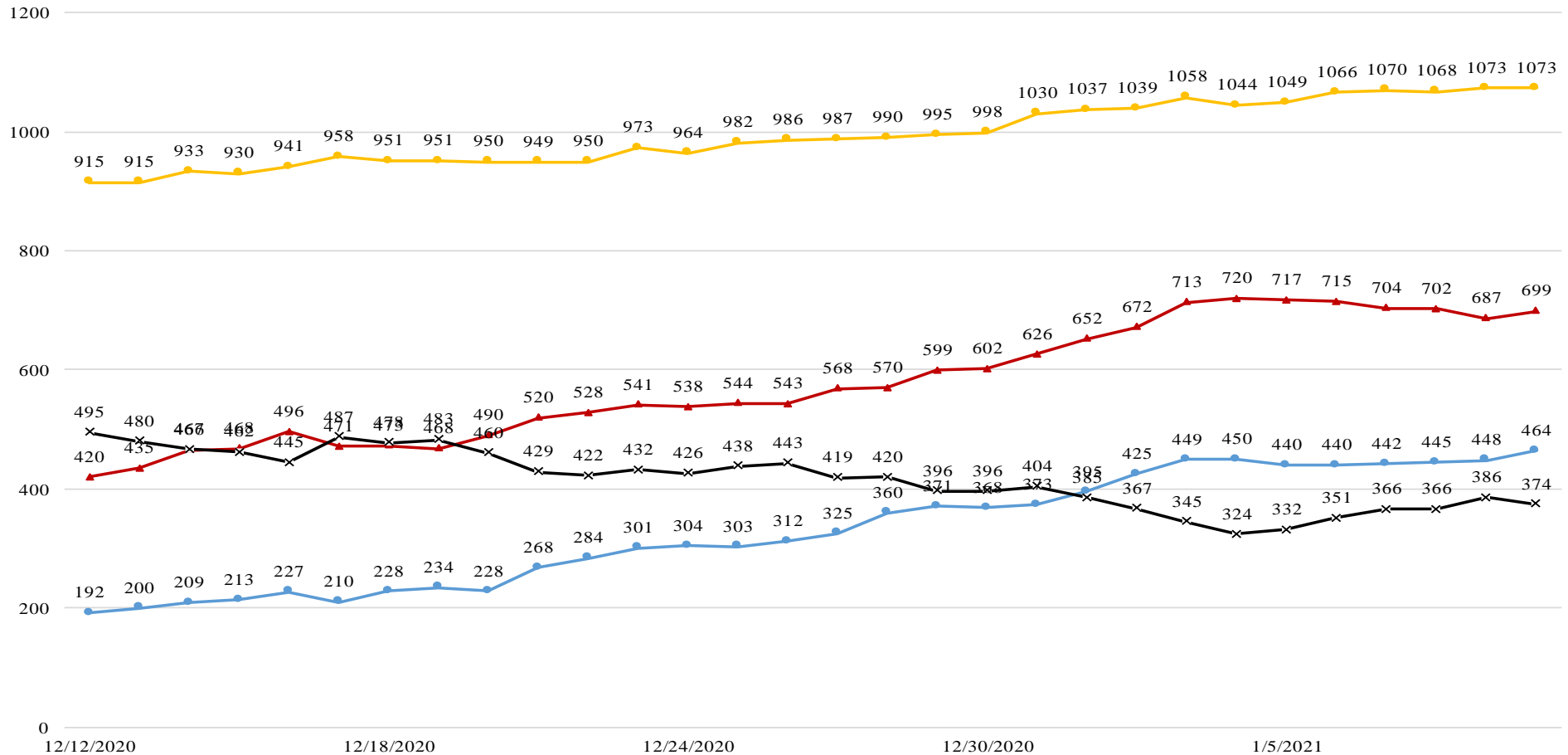


SURGE CENSUS - (01/10/21) | X OCCUPIED-580 | ● SYSTEM-1360



1/11/21

**COVID 19 ORANGE COUNTY HOSPITAL SYSTEM DATA (CA SNOWFLAKE SERVER)**  
**VENTILATORS IN USE (12/12/20 - 01/10/21) | 33 ACUTE CARE FACILITIES REPORTING**



DATE	12/12	12/13	12/14	12/15	12/16	12/17	12/18	12/19	12/20	12/21	12/22	12/23	12/24	12/25	12/26	12/27	12/28	12/29	12/30	12/31	1/1	1/2	1/3	1/4	1/5	1/6	1/7	1/8	1/9	1/10
COVID+ ◆	192	200	209	213	227	210	228	234	228	268	284	301	304	303	312	325	360	371	368	373	395	425	449	450	440	440	442	445	448	464
SYSTEM OCC ▲	420	435	466	468	496	471	473	468	490	520	528	541	538	544	543	568	570	599	602	626	652	672	713	720	717	715	704	702	687	699
SYSTEM AVL ✕	495	480	467	462	445	487	478	483	460	429	422	432	426	438	443	419	420	396	396	404	385	367	345	324	332	351	366	366	386	374
SYSTEM TTL ◆	915	915	933	930	941	958	951	951	950	949	950	973	964	982	986	987	990	995	998	1030	1037	1039	1058	1044	1049	1066	1070	1068	1073	1073

COVID+ = CONFIRMED AND SUSPECTED PATIENTS ON A VENTILATOR

\*OCC = VENTILATORS IN USE, INCLUDING COVID+ PATIENTS AND OTHER VENT PATIENTS

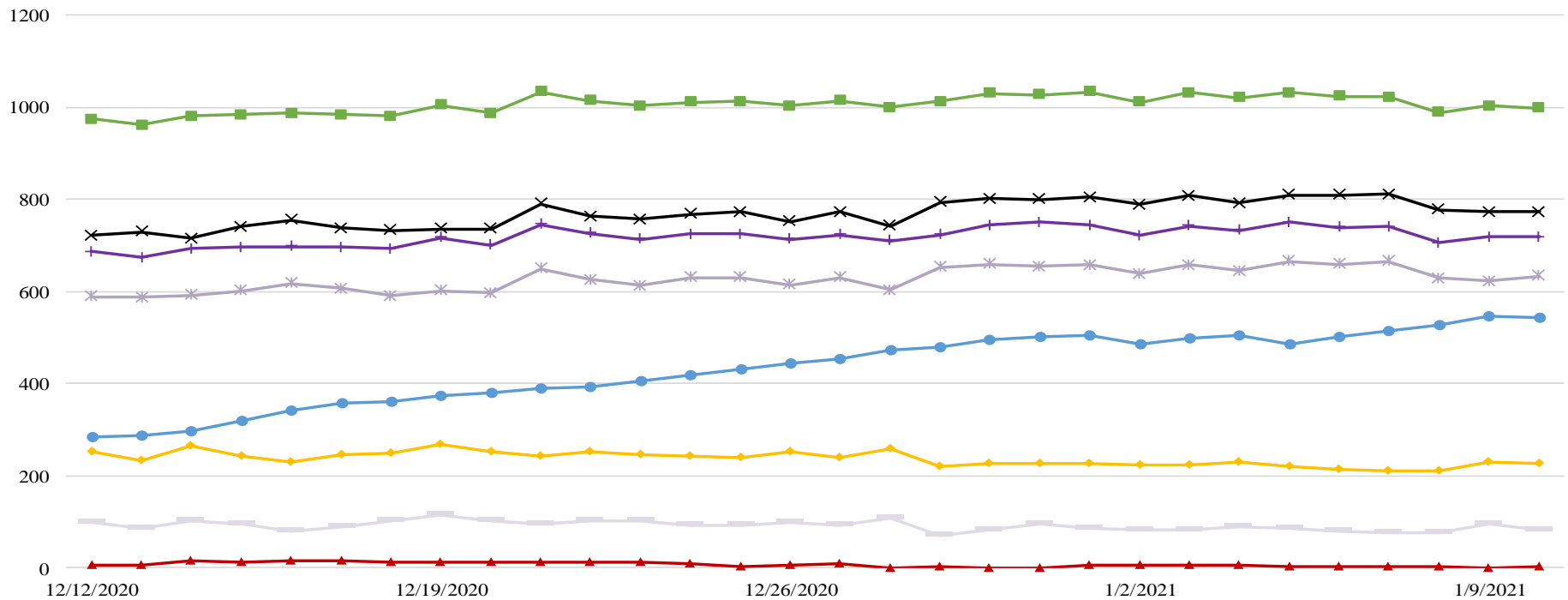
\*\*AVL = AVAILABLE VENTILATORS IN SYSTEM

\*\*\*TTL = TOTAL VENTILATORS IN SYSTEM



1/11/21

**COVID 19 ORANGE COUNTY HOSPITAL SYSTEM DATA (CA SNOWFLAKE SERVER)**  
**ICU BEDS (12/12/20 - 01/10/21) | 33 ACUTE CARE FACILITIES REPORTING**



DATE	12/12	12/13	12/14	12/15	12/16	12/17	12/18	12/19	12/20	12/21	12/22	12/23	12/24	12/25	12/26	12/27	12/28	12/29	12/30	12/31	1/1	1/2	1/3	1/4	1/5	1/6	1/7	1/8	1/9	1/10
CONFIRMED	284	288	296	319	343	358	361	375	380	390	394	405	417	432	443	453	473	479	495	501	506	487	500	504	485	502	514	528	547	544
SUSPECTED	5	5	16	11	15	16	13	11	11	14	11	12	8	4	7	8	1	2	1	0	6	5	6	5	3	4	3	3	0	3
OCCUPIED	721	729	715	740	755	737	733	736	736	790	763	756	768	772	752	773	742	793	802	800	805	788	807	792	810	809	811	778	773	772
SYSTEM AVL	253	232	266	244	231	246	248	268	251	243	251	246	243	241	251	241	258	219	228	227	228	223	224	229	221	214	211	211	230	226
SYSTEM TTL	974	961	981	984	986	983	981	1004	987	1033	1014	1002	1011	1013	1003	1014	1000	1012	1030	1027	1033	1011	1031	1021	1031	1023	1022	989	1003	998
CDPH OC OCC	588	587	592	601	618	606	590	601	597	650	625	613	631	631	614	631	603	653	659	654	657	638	658	645	665	659	665	628	623	634
CDPH OC AVL	98	86	101	95	79	90	103	116	103	96	102	101	94	93	99	92	107	70	84	96	86	83	84	88	85	80	75	78	95	84
CDPH OC TTL	686	673	693	696	697	696	693	717	700	746	727	714	725	724	713	723	710	723	743	750	743	721	742	733	750	739	740	706	718	718

\*AVL = AVAILABLE NON SURGE ICU BEDS. PRIOR TO 7/22 DEFINITION DID NOT EXCLUDE NONSURGE.

\*\*TTL = TOTAL NON SURGE ICU BEDS. PRIOR TO 7/22 DEFINITION DID NOT EXCLUDE NONSURGE.

\*\*\* AS OF 10/20/2020 SPIKE IN SYSTEM TTL, OCCUPIED AND AVAILABLE DUE TO CHANGE IN CHOC ORANGE REPORTED VALUES.

\*\*\*\* CDPH OC OCC = Adult ICU Occupied + Pediatric ICU Occupied

\*\*\*\*\* CDPH OC AVL = (Adult ICU Total Beds + Pediatric ICU Total Beds) - (Adult ICU Occupied + Pediatric ICU Occupied)

\*\*\*\*\* CDPH OC TTL = Adult ICU Total + Pediatric ICU Total



\*Data Source: California Department of Public Health (CDPH) – Snowflake server

\*\*Current Snowflake Data Dictionary may be found at:

[https://www.calhospital.org/sites/main/files/file-attachments/data\\_dictionary\\_cha\\_covid\\_tracker\\_4-17-20.pdf](https://www.calhospital.org/sites/main/files/file-attachments/data_dictionary_cha_covid_tracker_4-17-20.pdf)

**Acute Care Hospital PPE / Ventilator Supplies Days on Hand – (29/33 ACHs reported)**

Reporting Date: 1/10/21*	30 days +	15-30 days	7-14 days	4-6 days	0-3 days	Not Reported
Ventilator Supplies**	6	6	15	2	0	4
N95 Masks**	19	6	3	1	0	4
Surgical Masks**	19	9	1	0	0	4
Face Shields**	19	3	2	4	1	4
Gloves**	14	5	6	2	2	4
Gowns**	13	11	3	2	0	4

\*Data Source: ReddiNet

**Reported Service Category Status (23/25 ACHs w/EDs reported)**

Reporting Date: 1/11/21	Count	% of Total
Command Center Activated	18	72%
Surge Plan Activated	19	76%
Canceled Procedures/Services	25**	100%
Supply Issues	10	40%
CDPH Flex	17	68%
Increased Morgue Capacity	23	92%

**\*\*California Public Health Officer Order regarding Crisis Care Strategies issued on January 5, 2021.**

**Hospital Criteria for shifting to Crisis Care Strategies**

**LEGEND**

CRITERIA	STATUS		
	Normal Operations	Modified Operations	Modified Operations Assistance Needed
Rate of change in Hospitalized COVID-19 patients (doubling time over last 7 days)	Never to 4 weeks to double	4 weeks to 2 weeks to double	Less than 2 weeks to double
Absolute COVID-19 Census in the hospitals across Orange County	Less than 750	750-1500	>1500
Hospital census as a percentage of staffed capacity	<80%	80% to 90%	>90%
Hospital ICU census as a percentage of staffed ICU capacity	<70%	70% to 85%	>85%

**Hospital Criteria for shifting to Crisis Care Strategies**

**1/7/21**

CRITERIA	STATUS		
	Normal Operations	Modified Operations Under Control	Modified Operations Assistance Needed
Rate of change in Hospitalized COVID-19 patients (doubling time over last 7 days)	13.9		
Absolute COVID-19 Census in the hospitals across Orange County			2259
Hospital census as a percentage of staffed capacity	78%		
Hospital ICU census as a percentage of staffed ICU capacity			91%

### AGENCY OPERATIONS CENTER / LOGISTICS SECTION

- The AOC is activated M-F 0900-1600 at Level I; Warehouse Ops are M-F - 0900-1600.
- SCARCE Resources: Gloves, Wipes, Syringes, Needles

#### Total Activity – Updated 1/8/21 at 1530

INQUIRIES	RR RECEIVED	RR FILLED
17,239 <b>+61</b>	9,920 <b>+36</b>	8,080 <b>+34</b>
Total Denied Requests: <b>825</b> / Total Redacted Requests: <b>884</b>		

#### Logistics Daily Units Distributed 1/8/21

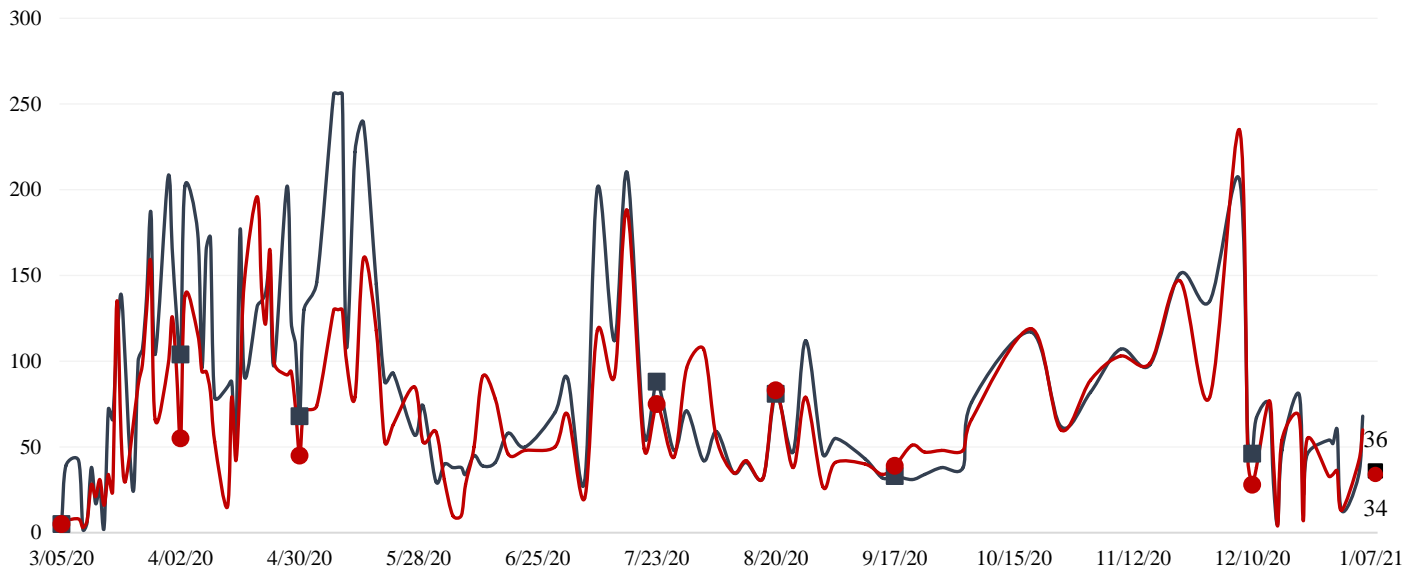
N95 Mask	2,000
Surgical Mask	1,850
Gown	65,100
Gloves	36,000
Face Shields/Eye Protection	0
Hand Sanitizer	0
Other	31,457
<b>Total Units</b>	<b>136,407</b>

#### Inventory Report February 18 to January 08, 2021

Medical Supply/Equipment Total Units Distributed	
N95 Mask	5,023,715
Surgical Mask	1,982,555
Gowns	2,154,211
PPE-Suit	17,965
Gloves	5,085,550
Eye Protection	392,519
Hand Sanitizer	312,213
Other Items	2,054,697
<b>Total Units</b>	<b>17,023,425</b>

#### Resource Requests - Updated 1/7/21 at 1530

Received ■ Filled ●



### ALTERNATE CARE SITE (ACS)

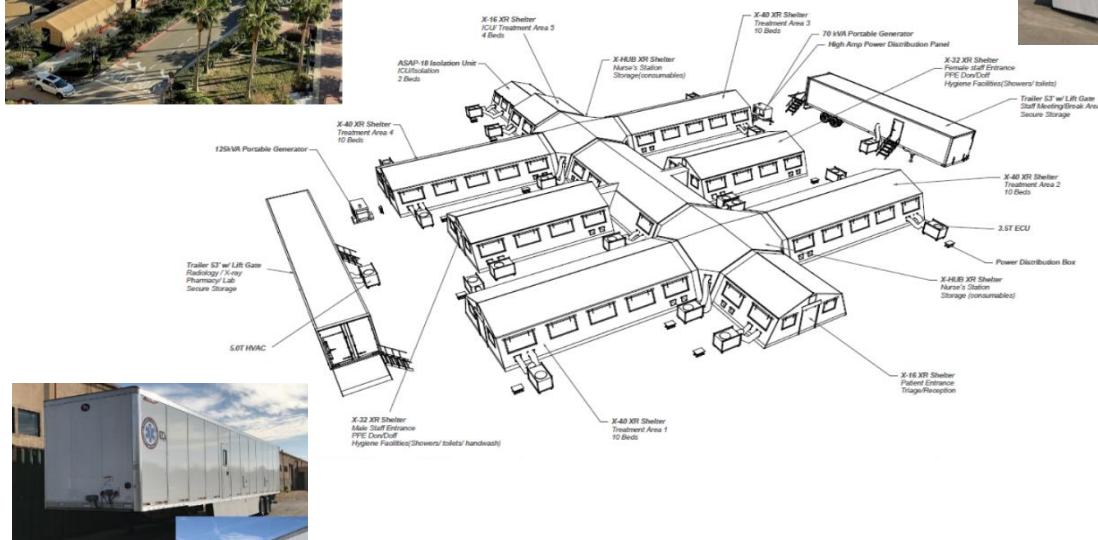
- Fairview Alternate Care Site (FACS) opened for admissions on **TUESDAY, 12/15/20 @ 1800**
- FACS Admissions Guidelines (updated 12.16.20) may be found on the OCEMS website at:  
<https://www.healthdisasteroc.org/civicax/filebank/blobdownload.aspx?BlobID=118724>

Fairview (COVID-19 +)		
Patient Census (as of 1/11/2021 09:00)	CURRENT	TOTAL
Orange County	13	58
LA County	10	38
Riverside	0	2
San Bernadino County	0	2
Total patients CENSUS / TOTAL ACCEPTED	23	100
Patients Discharged	13	58
DISCHARGED		TOTAL
Fairview (COVID-19 +)		77
Memory Care Unit (MCU) Census (as of 1/10/2021 17:00)		
MCU Patient Census	12	20
Patients Discharged from MCU		TOTAL
MCU - DISCHARGED		8

### MOBILE FIELD HOSPITALS

- MFHs are capable of expanding current hospital capacity by adding additional patient beds.
- They are large heavy duty canvas tents with hard flooring and temperature controlled units.
- They can be configured in a myriad of footprints and sizes (i.e. 25-200 bed).
- CDPH is primed and ready to provide hospitals a waiver to allow emergency use of this MFH facility.
- OCEMS is actively deploying multiple MFHs to OC hospitals prepared to receive & operate
  - OCEMS has a total of 8 trailers to support at minimum, 200 patient beds.
  - Hospitals who have self-identified in receiving a MFH include:

- UCI (50 bed) – confirmed
- Fountain Valley (25 bed) – confirmed
- Los Alamitos (25 bed) – confirmed
- Saint Jude (50 bed) – confirmed





## MOBILE FIELD HOSPITALS

