

**OVERVIEW OF CURRENT SITUATION (3/10/21 0926)**

Source: Johns Hopkins University & Medicine <https://coronavirus.jhu.edu/map.html>

Cases / Deaths  
 Worldwide: 117,764,619 / 2,613,747  
 Nationwide: 29,109,695 / 527,991  
 California: 3,607,981 / 54,646  
 Orange Co: 248,078 / 4,346 Source: [Orange County COVID-19 Case Counts & Testing Figures](#)

**ORANGE COUNTY PUBLIC HEALTH (as of 3/10/21 1032)**

**Orange County COVID-19 Summary\* click for full details**

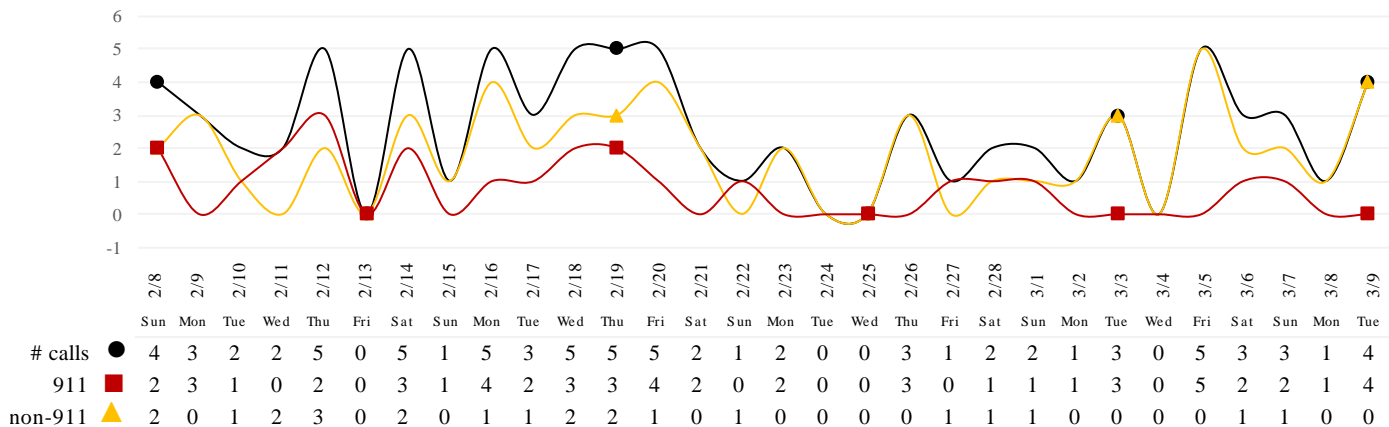
	Thu 3/4/21	Fri 3/5/21	Sat 3/6/21	Sun 3/7/21	Mon 3/8/21	Tues 3/9/21	Wed 3/10/21
Cases Reported to Date	247,140	247,372	247,641	247,751	247,914	248,022	248,078
Deaths Reported to Date	4,013	4,075	4,173	4,226	4,252	4,313	4,346
Tests Reported Today	15,146	13,577	11,188	8,917	5,709	6,052	9,677
Cumulative Tests to Date	3,079,965	3,093,542	3,104,730	3,113,647	3,119,356	3,125,408	3,135,085

\*Data posted is always preliminary & subject to change. More information may become available as individual case investigations are completed. **LOCAL DATA MAY BE DIFFERENT FROM THE STATE WEBSITE DATA.**

**SKILLED NURSING/ASSISTED LIVING/RESIDENTIAL CARE FACILITY – TRENDS**

\*Data Source: Orange County Medical Emergency Data System (OC-MEDS) – Updated 3/9/21

**Calls to SNFs/Congregate Living with Primary Impressions: Fever/Cough, Influenza-like Illnesses**  
 (Transports to ERCs Only - Last 30 Days)



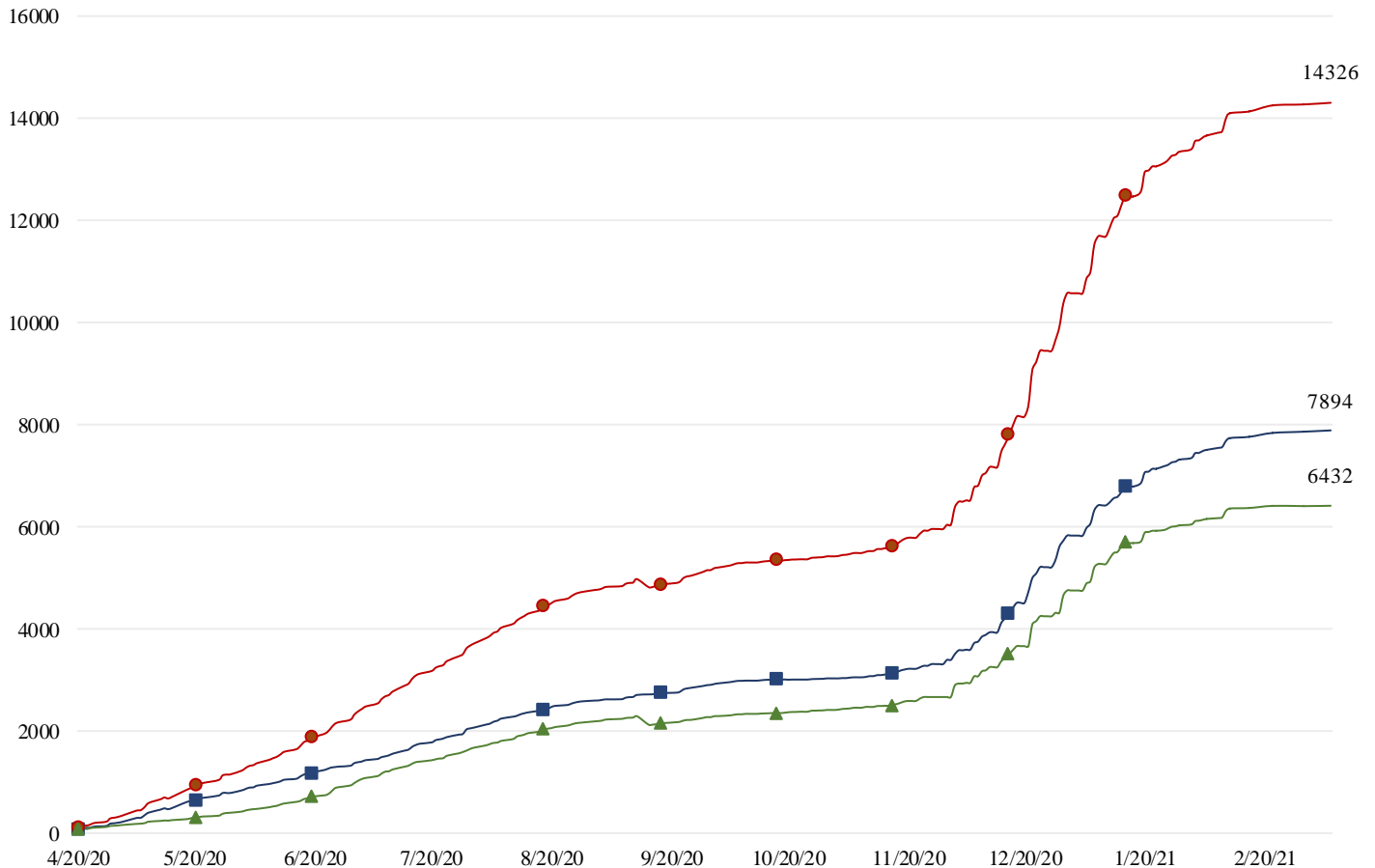
\*Data Source: California Department of Public Health (CDPH)

**Skilled Nursing/Assisted Living/Residential Care Facility PPE / Ventilator Supplies Days on Hand**  
 (69/73 SNFs reported)

Reporting Date: 3/9/2021	0 - 3 days	4 - 7 days	8-14 days	15+ days
N95 Masks	0	2	12	55
Surgical Masks	0	2	10	57
Eye Protection	0	2	11	56
Gowns	0	2	10	57
Gloves	0	3	11	55
Alcohol-Based Hand Sanitizer	0	3	11	55

\*Data Source: Orange County Health Care Agency – Public Health – 3/9/21

**COVID+ in Congregate Healthcare\***



\*\*NOTE\*\*: Decrease in the COVID + in staff seen on graph is due to data being cleaned and removing duplicates of those that work in multiple OC facilities or are contract staff and care for residents at multiple facilities.

Resident COVID+ ■ Staff COVID+ ▲ Total ●

\*Data Source: Orange County Health Care Agency – Public Health

**Current Facility Outbreaks (as of 3/9/21 1000)**

*An "Outbreak" is two (2) or more confirmed cases of COVID-19 in facility occurring within 14 days.*

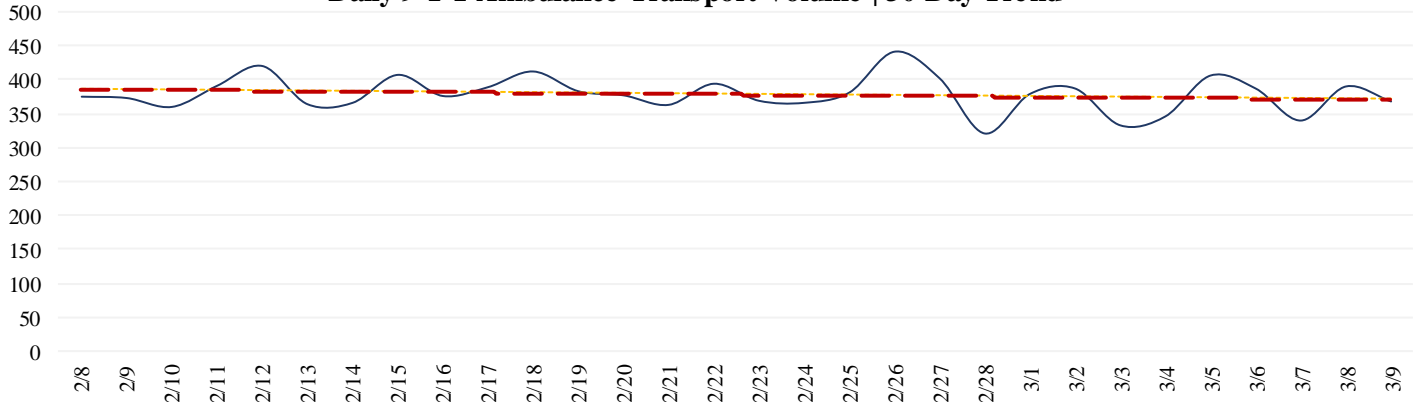
Facility Type by Licensing Category, Count		Facility Name Alphabetical
Skilled Nursing Facility	3	Buena Vista Care Center, Huntington Valley Healthcare Center, The Pavilion At Sunny Hills
Elderly Assisted Living	2	Carmel Village Retirement Community, Moms And Dads

## EMERGENCY MEDICAL SERVICES STATUS

\*Data Source: Orange County Medical Emergency Data System (OC-MEDS)

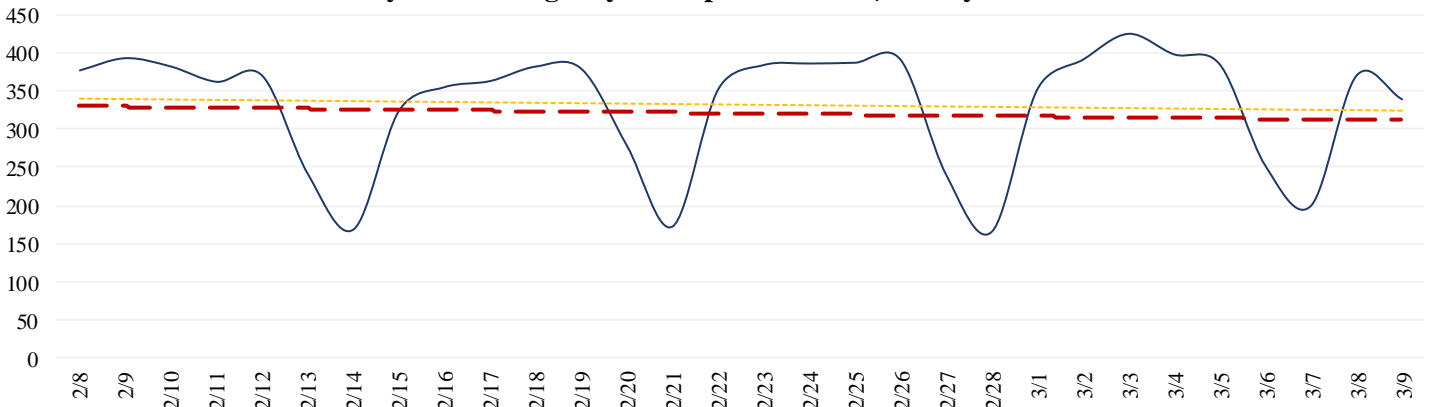
9-1-1 ambulance transport volume **has remained stable** for the last couple weeks. Volume is averaging about **10-15% below normal** (pre-COVID) levels (Updated 03/10/21).

**Daily 9-1-1 Ambulance Transport Volume | 30 Day Trend**

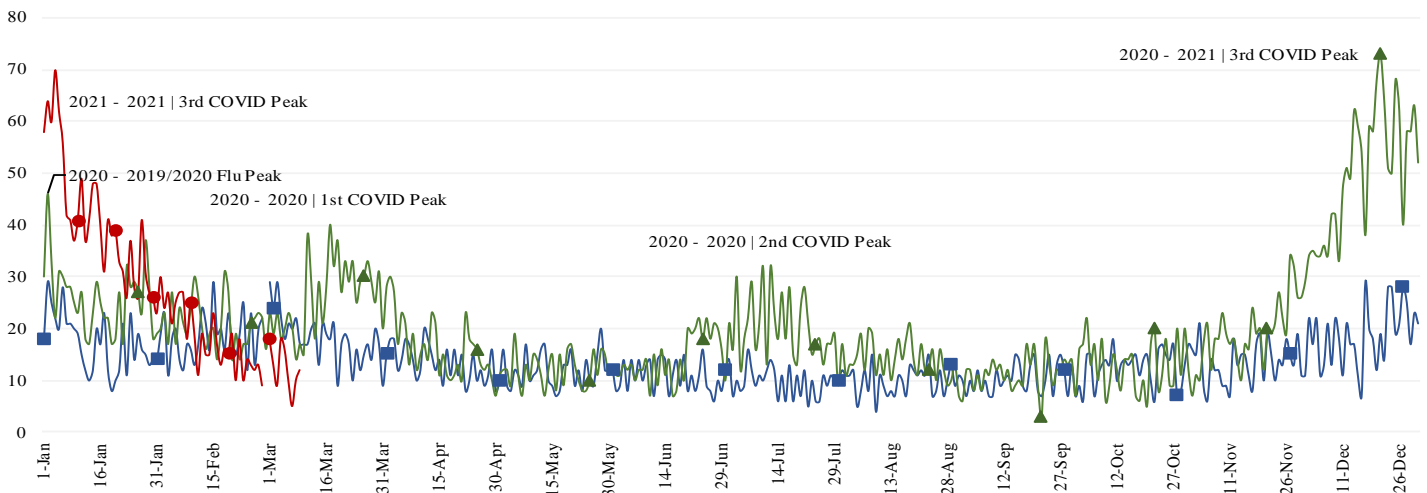


Non-emergency ambulance transports **have remained steady** over the last couple weeks. Transport volume is **averaging about 30-35% below normal** (pre-COVID) levels overall (Updated 03/10/21).

**Daily Non-Emergency Transport Volume | 30 Day Trend**



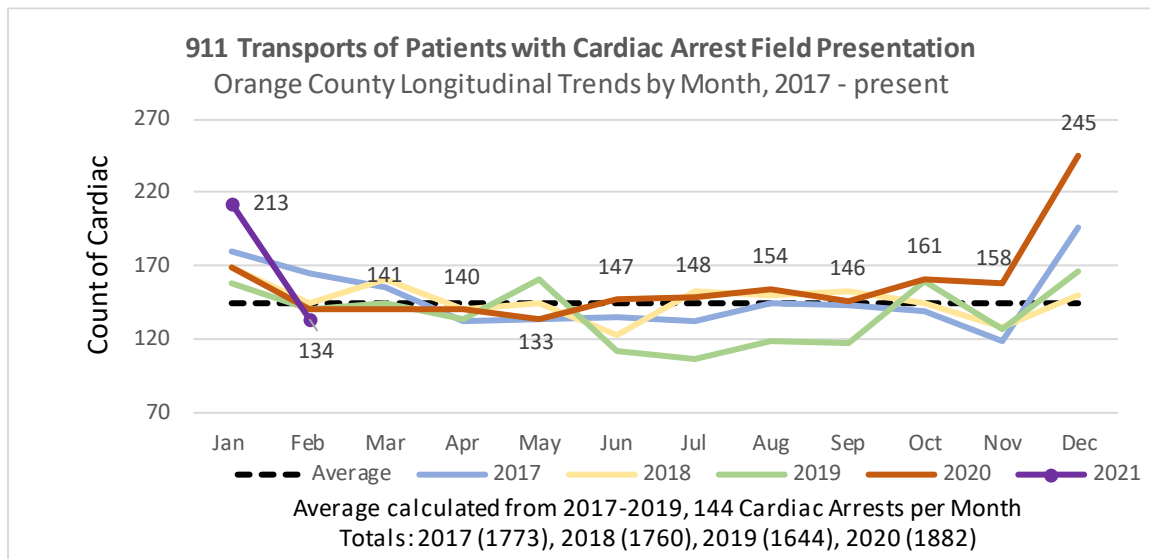
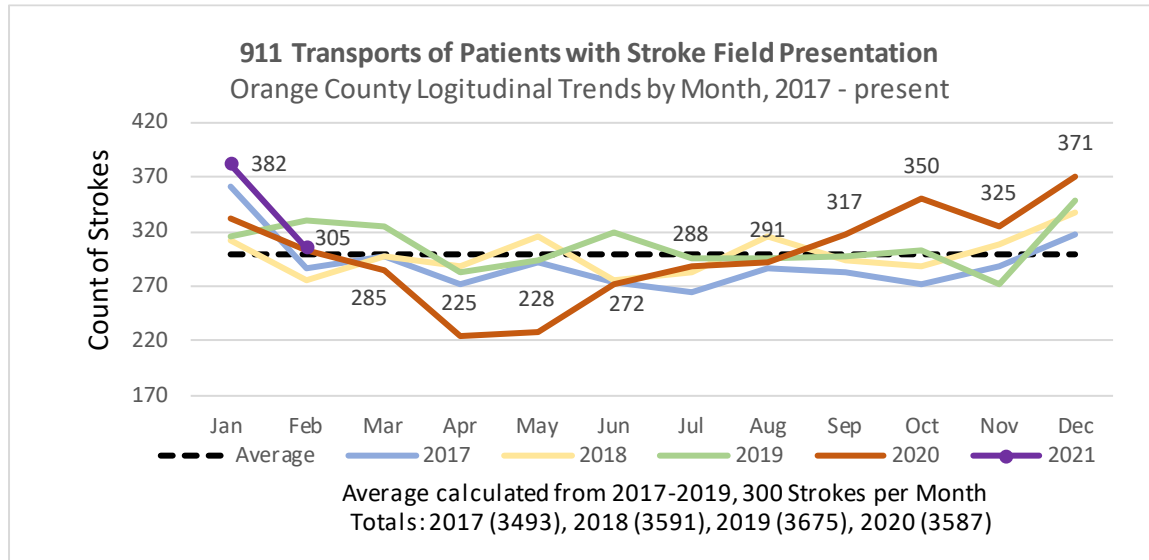
Primary Impressions of Cold/Flu/ILI by 9-1-1 EMS providers **continue to decline and are below baseline levels** for this time of year. (Updated 03/10/21).

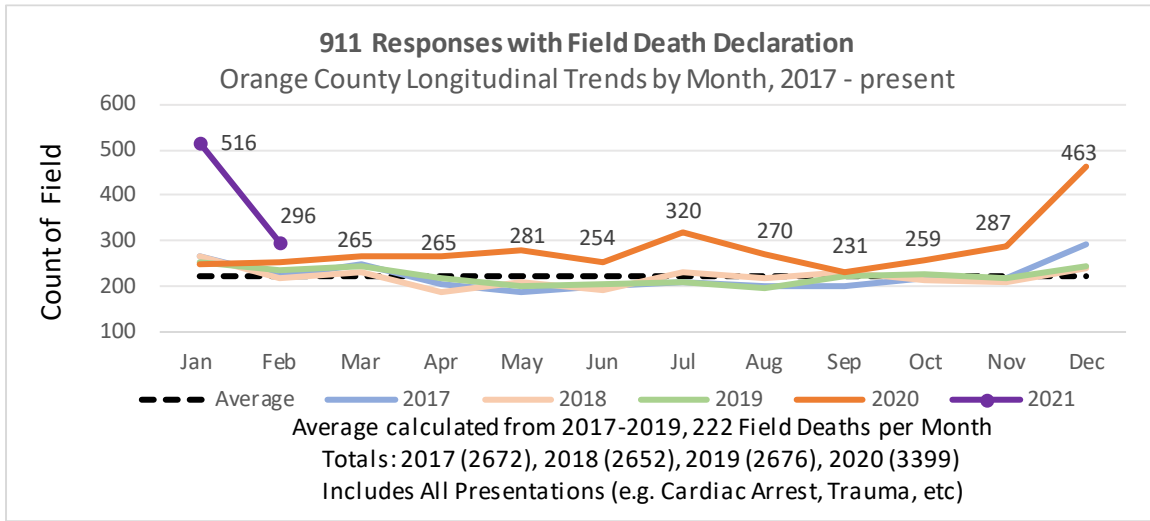


**EMS Provider Impressions - Cold/Flu/ILI/COVID-19 Year Over Year Comparison (2019 ■, 2020 ▲, & 2021 ●)**

## 911 EMS SYSTEM MONITORING

\*Data Source: Orange County Medical Emergency Data System (OC-MEDS)





**Summary Data Table for Chart, “911 Responses with Field Death Declaration”**

	2017	2018	2019	2020	2021
January	268	267	254	250	516
February	224	216	235	254	296
March	248	233	245	265	
April	206	186	220	265	
May	186	210	202	281	
June	201	190	205	254	
July	211	233	208	320	
August	201	218	195	270	
September	199	233	222	231	
October	217	213	227	259	
November	217	211	217	287	
December	294	242	246	463	
<b>Total</b>	<b>2378</b>	<b>2410</b>	<b>2430</b>	<b>3399</b>	

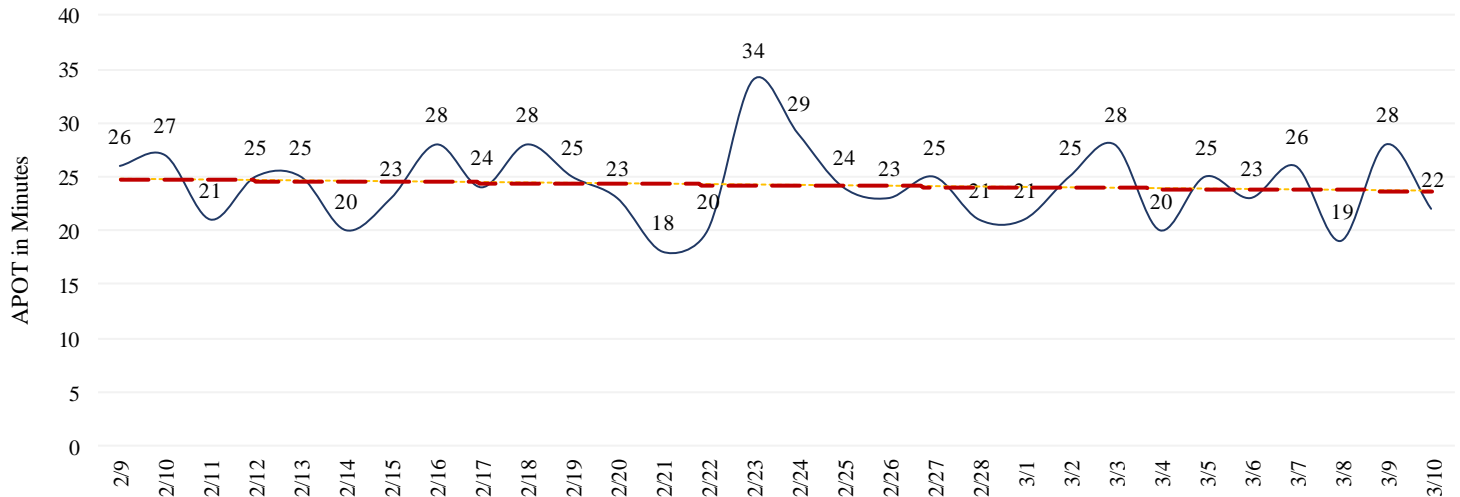
- Ambulance Patient Offload Time (APOT) is defined as the time the ambulance arrives at the receiving destination (wheels stop) to the time that the ambulance crew physically transfers the patient to the ED gurney. Last 24 hours: **Current Average APOT is: 16m16s / Current 90th Percentile APOT is: 22m19s**

The chart below displays a daily trend over the last 30 days.

- Three (3) ERCs had APOT times greater than thirty (30) minutes.
- Zero (0) ERCs had APOT times greater than sixty (60) minutes.

\*Data Source: Orange County Medical Emergency Data System (OC-MEDS) – Updated 3/10/21

### COVID 19 - APOT 90th percentile | Daily Trend

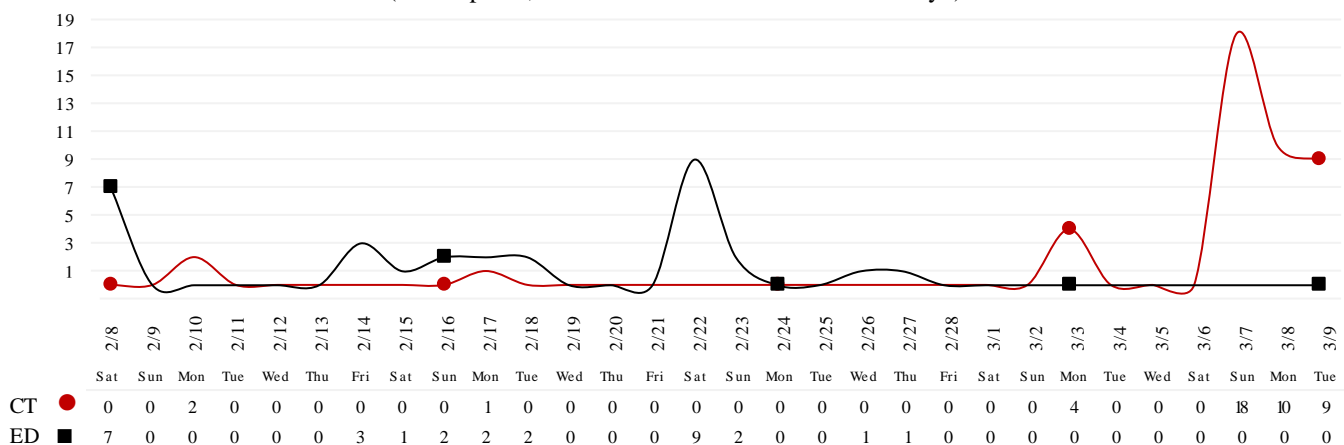


Note: a handful of ERCs were close to the 30 minute threshold, but were not over it.

- Emergency Department (ED) Diversion & Computerized Tomography (CT) (ED closed to all ambulance transport due to no ED capacity or no CT available) for the last 30 days.
- NOTE: Suspension of Hospital Diversion was reinstated, 1/4/21, @ 1900.**
- NOTE: Hospital Diversion was reinstated on 1/25/21 @ 1900.**

\*Data Source: Orange County Medical Emergency Data System (OC-MEDS) – Updated 3/9/21

### Hours of Diversion per 24-Hour Period (25 Hospitals, rounded to nearest hour - Last 30 Days)



**3/10/21**

**26:** Anaheim Regional, Anaheim Global, Chapman Global, CHOC, CHOC at Mission, Foothill, Fountain Valley, Garden Grove, Hoag-Irvine, Hoag-Newport Beach, Huntington Beach, Kaiser-Anaheim, Kaiser-Irvine, La Palma, Los Alamitos, Mission-Laguna Beach, Mission-Mission Viejo, Orange Coast Memorial, Orange County Global, Placentia Linda, Saddleback Memorial, Saint Jude, South Coast Global, St. Josephs, UCI, West Anaheim

\*Data Source: California Department of Public Health (CDPH) – Snowflake server

Current Snowflake Data Dictionary may be found at:

[https://www.calhospital.org/sites/main/files/file-attachments/data\\_dictionary\\_cha\\_covid\\_tracker\\_4-17-20.pdf](https://www.calhospital.org/sites/main/files/file-attachments/data_dictionary_cha_covid_tracker_4-17-20.pdf)

### 33 HOSPITALS

Date	Census All System	Occupancy % System	COVID+ Hospitalized System	COVID+ Hospitalized ICU Only (Adult & Peds)	% COVID+ hospitalized of ICU Occupied (Adult & Peds)	ICU Occupied (Adult & Peds)**	ICU Available (Adult & Peds)***	% ICU Available (Adult & Peds)****	ICU by Patient Age Group						% Ventilators Available
									Adult Occupied	Adult Available	Adult % Available	Pediatric Occupied	Pediatric Available	Pediatric % Available	
2/24	3707	69%	515	160	32%	501	222	31%	476	184	28%	25	38	60%	60%
2/25	3667	69%	453	137	29%	477	234	33%	449	199	31%	28	35	56%	60%
2/26	3632	68%	444	128	28%	459	249	35%	435	210	33%	24	39	62%	61%
2/27	3637	68%	421	132	28%	466	245	34%	442	200	31%	24	45	65%	62%
2/28	3505	66%	419	119	27%	441	251	36%	422	201	32%	19	50	72%	63%
3/1	3509	66%	425	116	26%	451	255	36%	433	204	32%	18	51	74%	64%
3/2	3560	68%	403	107	24%	443	256	37%	430	202	32%	13	54	81%	65%
3/3	3598	68%	379	97	21%	455	249	35%	432	205	32%	23	44	66%	66%
3/4	3576	67%	339	91	21%	429	273	39%	406	229	36%	23	44	66%	66%
3/5	3569	67%	321	87	19%	454	247	35%	427	207	33%	27	40	60%	66%
3/6	3496	66%	296	89	20%	438	254	37%	410	215	34%	28	39	58%	68%
3/7	3343	64%	288	84	20%	427	260	38%	405	215	35%	22	45	67%	68%
3/8	3281	64%	283	77	18%	418	265	39%	394	222	36%	24	43	64%	68%
3/9	3433	66%	277	73	16%	444	243	35%	413	207	33%	31	36	54%	68%

\*\*ICU occupied PREVIOUSLY ICU CDPH OC Occupied – CDPH combines occupied ICU adult beds and occupied ICU pediatric beds as a reporting metric on their COVID-19 Hospital dashboard. \*\*\*ICU Available PREVIOUSLY ICU CDPH OC Available – CDPH subtracts the sum of occupied ICU adult beds and occupied ICU pediatric beds, from the sum of ICU total adult beds and ICU total pediatric beds to determine ICU available beds on their COVID-19 Hospital dashboard. \*\*\*\*% ICU AVAILABLE PREVIOUSLY % ICU CDPH OC Available – The sum of occupied ICU adult beds and occupied ICU pediatric beds, divided by the sum of ICU total adult beds and ICU total pediatric beds, as a percentage. \*\*\*\*\*COVID+ hospitalized of ICU Occupied PREVIOUSLY % ICU Beds System Available – All ICU beds reported as available in Orange County, which includes Adult, PICU, and NICU, and any other ICU bed types.

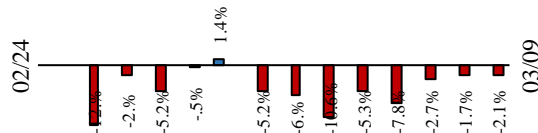
3/10/21

**COVID 19 ORANGE COUNTY HOSPITAL SYSTEM DATA (CA SNOWFLAKE SERVER)**

**COVID+ CENSUS by BED TYPE | 03/09/2021**

▲ ICU	73	-4	-5.2%	▼
◆ ED OVERFLOW	16	+6	60.0%	▲
X NON-ICU	204	-2	-1.0%	▼
● SYSTEM	277	-6	-2.1%	▼
3 Day / 03-06-21	296	-19	-6.4%	
7 Day / 03-02-21	403	-126	-31.3%	

**14 Day System COVID+ Change**



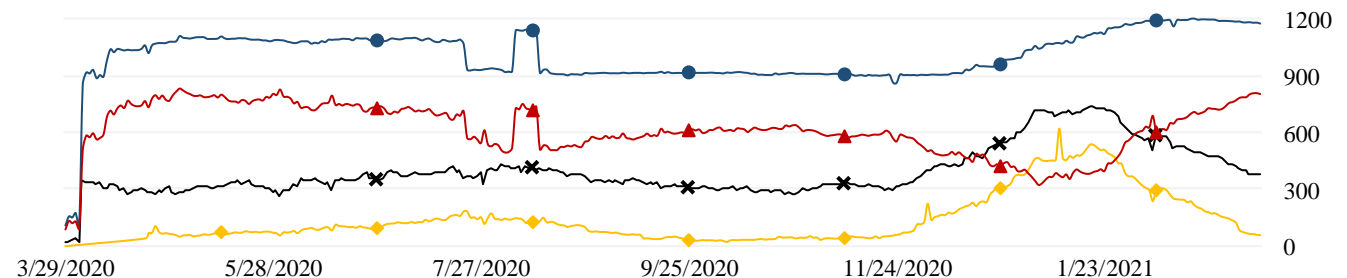
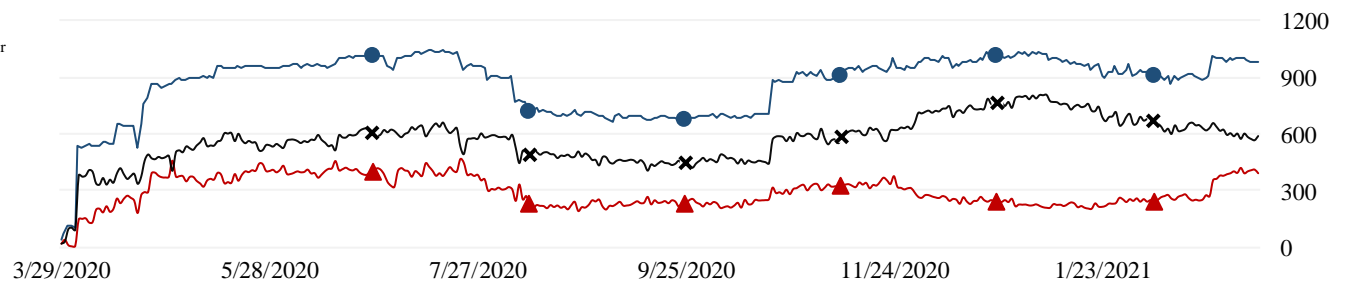
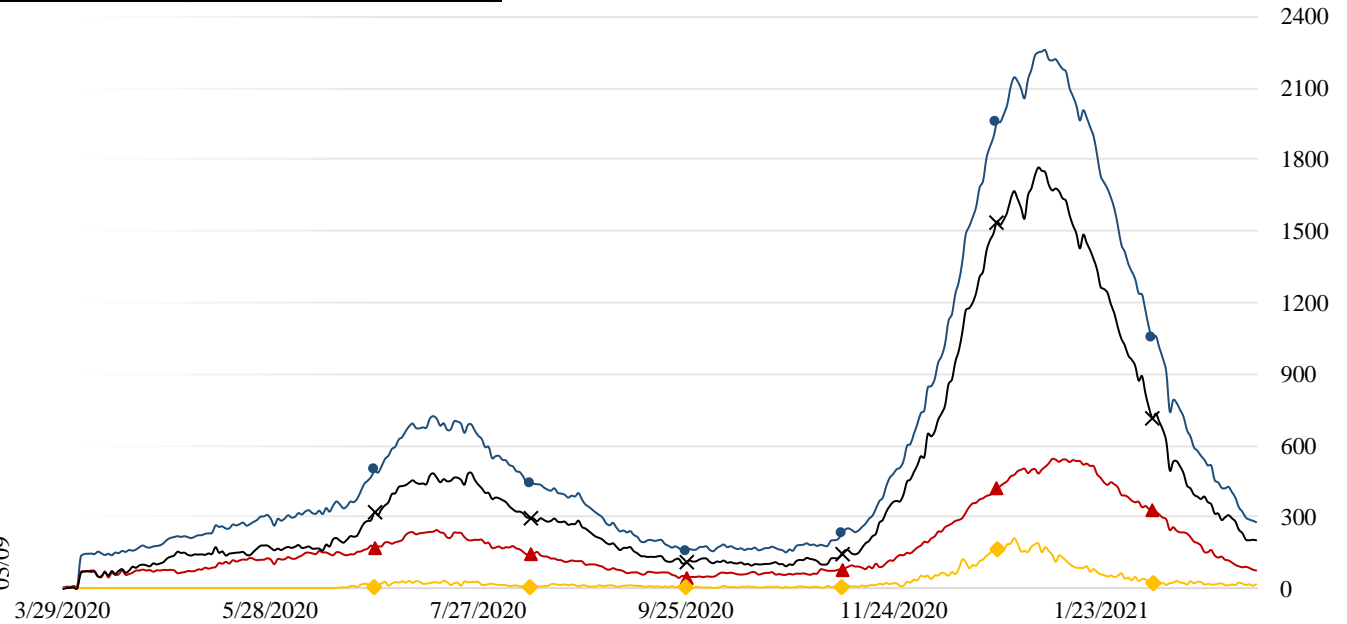
**ICU SYSTEM CENSUS | (03/09/21)**

\*includes adult, PICU, NICU & other

● SYSTEM - 983
▲ AVAILABLE- 391 (39.8%)
X OCCUPIED- 592 (60.2%)

**VENTILATORS | (03/09/21)**

● SYSTEM - 1176
▲ AVAILABLE- 801 (68.1%)
X OCCUPIED- 375 (31.9%)
◆ COVID- 57 (15.2%) *0 FROM ED





3/10/21

**COVID 19 ORANGE COUNTY HOSPITAL SYSTEM DATA (CA SNOWFLAKE SERVER)**

**7 DAY HISTORY BED OCCUPANCY | 03/09/2021**

● SYSTEM BEDS (INCLUDES SURGE)- 6823

◆ INPATIENT INCLUDING SURGE- 3529 (51.7%)

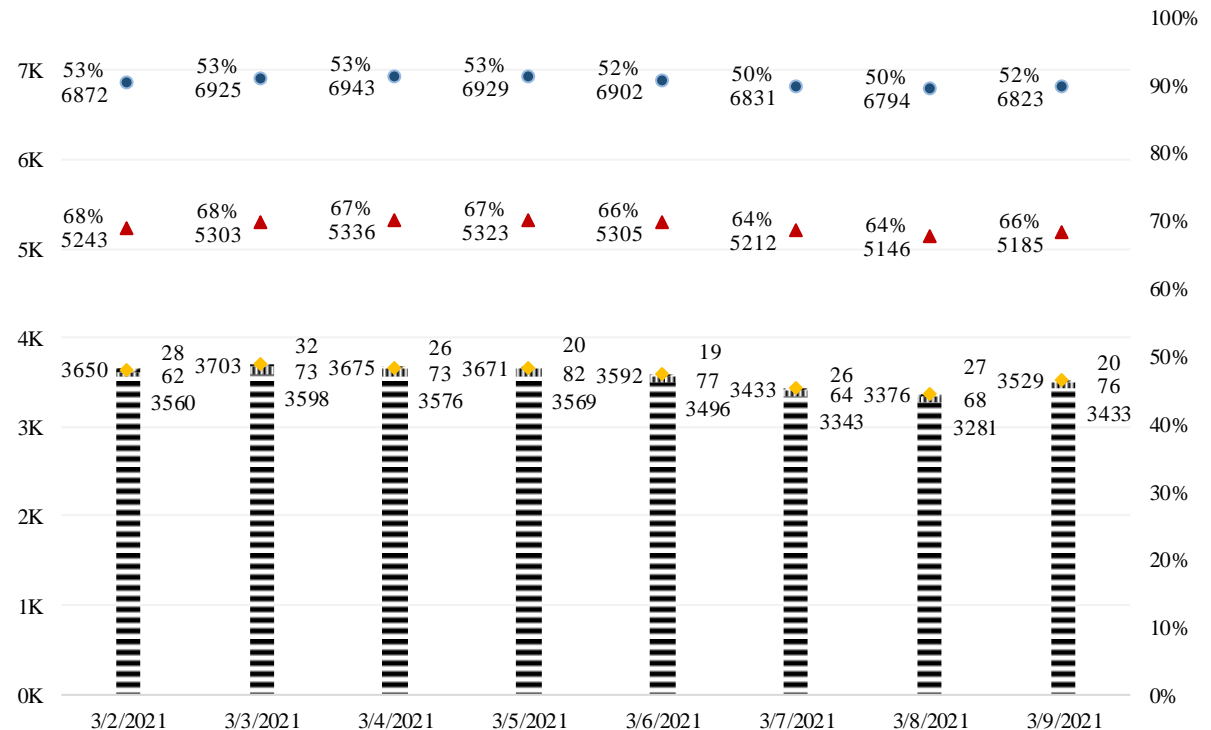
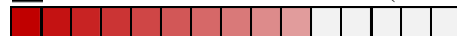


|||| SURGE NON ICU INPATIENT- 76

|||| SURGE ICU INPATIENT- 20

▲ NON SURGE INPATIENT BEDS- 5185

▨ NON SURGE INPATIENT- 3433 (66.2%)



**SURGE CENSUS | 03/09/2021**

● SURGE BED SYSTEM- 1042 (ICU- 123 | NON ICU- 919)

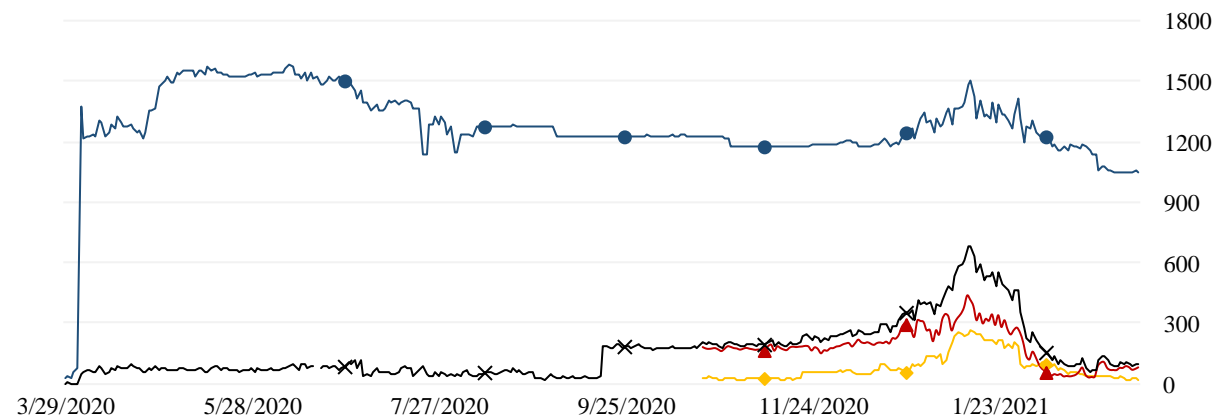
✕ SURGE BED PATIENTS SYSTEM- 96 (9.2%)



▲ SURGE BED NON ICU PATIENTS- 76 (8.3%)



◆ SURGE BED ICU PATIENTS- 20 (16.3%)



3/10/21

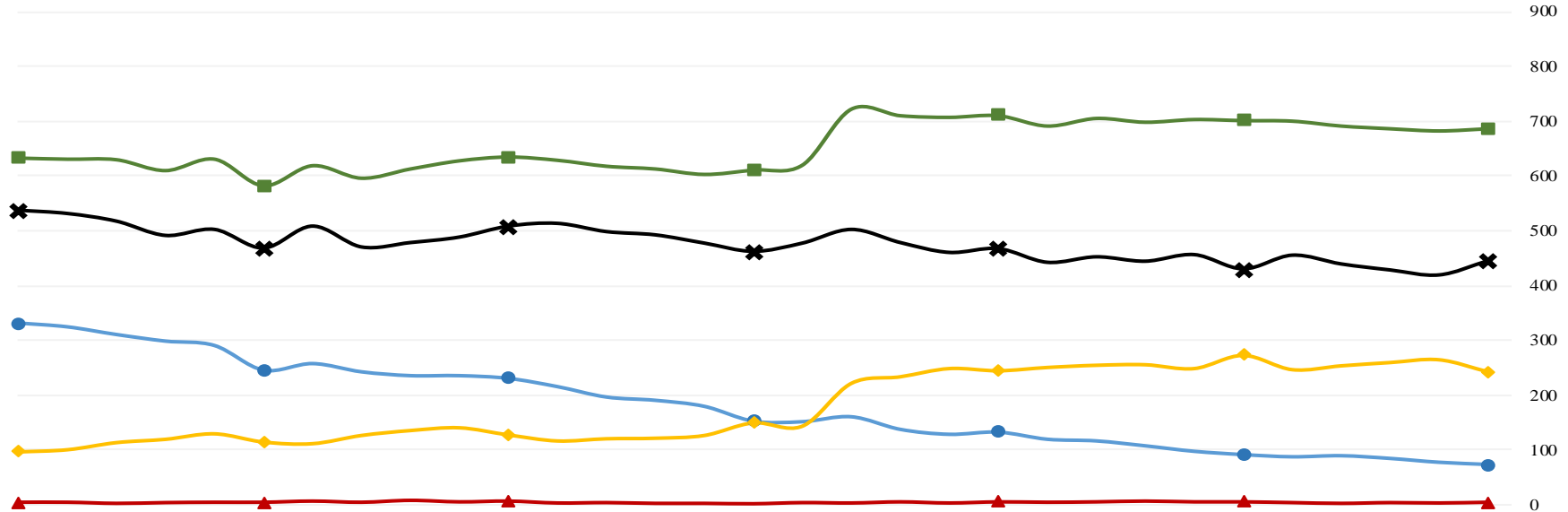
**COVID 19 ORANGE COUNTY HOSPITAL SYSTEM DATA (CA SNOWFLAKE SERVER)**

**NON SURGE ICU BEDS: ADULT & PEDS COMBINED (02/08/21 - 03/09/21) | 33 ACUTE CARE FACILITIES REPORTING**

**ICU INSIGHTS**

02-08-21 thru 03-09-21:

- Confirmed COVID+ in ICU decreased by -77.5%.
- ▲ Confirmed suspect in ICU had no change at 0.0%.
- ✕ Occupied ICU decreased by -16.2%.
- ◆ Available ICU increased by 140.6%.
- System ICU increased by 8.9%.



	2-8-21	2-9-21	2-10-21	2-11-21	2-12-21	2-13-21	2-14-21	2-15-21	2-16-21	2-17-21	2-18-21	2-19-21	2-20-21	2-21-21	2-22-21	2-23-21	2-24-21	2-25-21	2-26-21	2-27-21	2-28-21	3-1-21	3-2-21	3-3-21	3-4-21	3-5-21	3-6-21	3-7-21	3-8-21	3-9-21
● CONFIRMED	324	310	298	290	245	257	242	235	235	230	215	196	190	179	152	151	160	137	128	132	119	116	107	97	91	87	89	84	77	73
Adult	323	310	297	289	245	257	240	233	234	229	215	194	189	177	152	151	160	137	128	132	119	116	107	97	91	87	89	83	76	72
Peds	1	0	1	1	0	0	2	2	1	1	0	2	1	2	0	0	0	0	0	0	0	0	0	0	0	0	0	1	1	1
▲ SUSPECTED	4	1	3	4	4	7	4	9	5	7	2	3	1	1	0	3	2	5	2	5	4	5	7	5	5	3	1	3	2	4
Adult	4	1	2	3	3	5	4	9	5	7	2	3	1	0	0	2	2	5	2	5	4	5	7	5	5	3	1	3	2	4
Peds	0	0	1	1	1	2	0	0	0	0	0	0	0	1	0	1	0	0	0	0	0	0	0	0	0	0	0	0	0	0
✕ OCCUPIED	530	516	490	501	467	507	469	477	487	507	512	497	491	476	461	476	501	477	459	466	441	451	443	455	429	454	438	427	418	444
Adult	507	494	469	484	451	491	452	463	475	484	486	470	464	455	445	464	476	449	435	442	422	433	430	432	406	427	410	405	394	413
Peds	23	22	21	17	16	16	17	14	12	23	26	27	27	21	16	12	25	28	24	24	19	18	13	23	23	27	28	22	24	31
◆ SYSTEM AVL	101	114	120	130	115	112	127	136	141	128	117	121	122	127	150	144	222	234	249	245	251	255	256	249	273	247	254	260	265	243
Adult	69	81	86	92	76	73	89	95	98	96	88	93	94	93	111	101	184	199	210	200	201	204	202	205	229	207	215	215	222	207
Peds	32	33	34	38	39	39	38	41	43	32	29	28	28	34	39	43	38	35	39	45	50	51	54	44	44	40	39	45	43	36
■ SYSTEM TTL	631	630	610	631	582	619	596	613	628	635	629	618	613	603	611	620	723	711	708	711	692	706	699	704	702	701	692	687	683	687
Adult	576	575	555	576	527	564	541	558	573	580	574	563	558	548	556	565	660	648	645	642	623	637	632	637	635	634	625	620	616	620
Peds	55	55	55	55	55	55	55	55	55	55	55	55	55	55	55	55	63	63	63	69	69	69	67	67	67	67	67	67	67	67

3/10/21

# COVID 19 ORANGE COUNTY HOSPITAL SYSTEM DATA (CA SNOWFLAKE SERVER)

## VENTILATORS (02/08/21 - 03/09/21) | 33 ACUTE CARE FACILITIES REPORTING

### VENTILATOR INSIGHTS

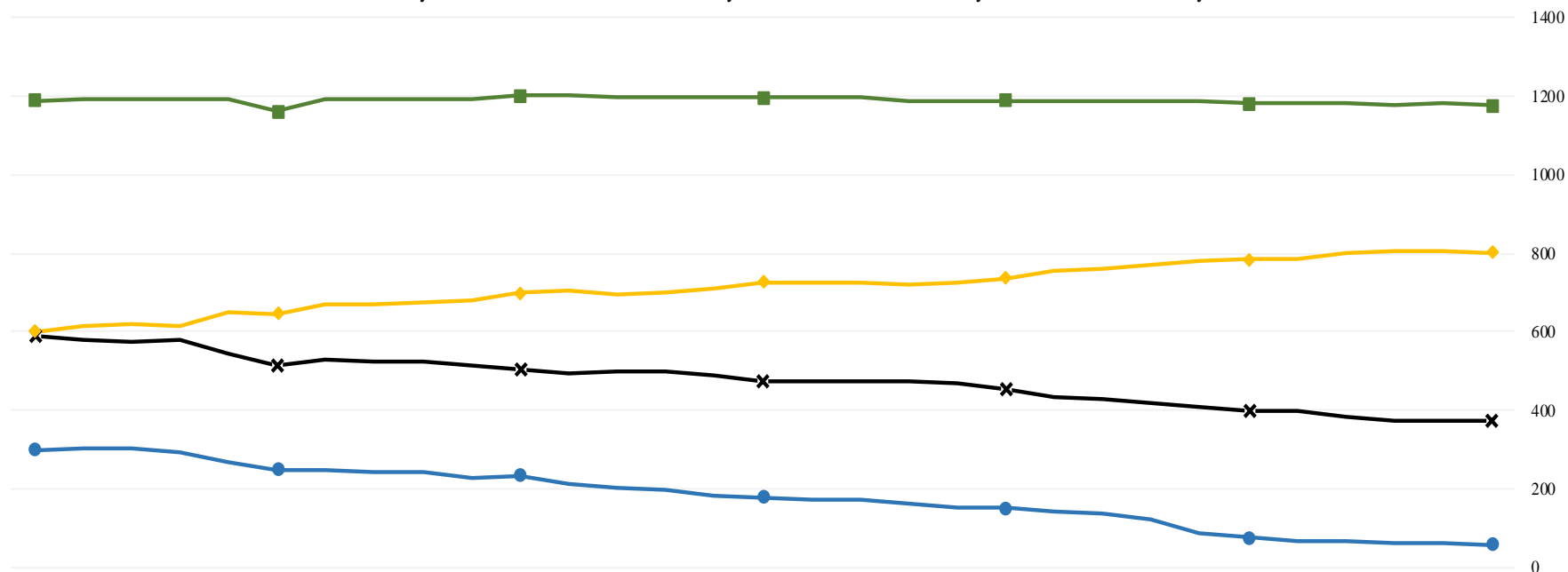
02-08-21 thru 03-09-21:

● Confirmed COVID+ patients on ventilators decreased by -81.3%.

X Occupied ventilators decreased by -35.3%.

◆ System available ventilators increased by 30.7%.

■ Total system ventilators decreased by -1.4%.



● CONFIRMED <sup>3</sup>	304	302	292	268	249	245	243	242	229	234	214	202	196	182	178	170	172	162	153	149	143	134	123	84	74	68	64	63	59	57
X OCCUPIED	580	574	581	545	515	527	524	522	513	503	495	499	496	488	471	473	473	471	467	453	435	429	418	406	398	397	383	375	375	375
◆ SYSTEM AVL	613	618	613	648	646	667	670	673	682	698	707	697	702	710	726	724	723	719	723	737	754	759	768	781	784	785	800	805	806	801
■ SYSTEM TTL	1193	1192	1194	1193	1161	1194	1194	1195	1195	1201	1202	1196	1198	1198	1197	1197	1196	1190	1190	1190	1189	1188	1186	1187	1182	1182	1183	1180	1181	1176

\*Confirmed includes ED values

\*Data Source: California Department of Public Health (CDPH) – Snowflake server

\*\*Current Snowflake Data Dictionary may be found at:

[https://www.calhospital.org/sites/main/files/file-attachments/data\\_dictionary\\_cha\\_covid\\_tracker\\_4-17-20.pdf](https://www.calhospital.org/sites/main/files/file-attachments/data_dictionary_cha_covid_tracker_4-17-20.pdf)

**Acute Care Hospital PPE / Ventilator Supplies Days on Hand – (31/33 ACHs reported)**

Reporting Date: 03/09/21 *	30 days +	15-30 days	7-14 days	4-6 days	0-3 days	Not Reported
Ventilator Supplies**	8	6	14	2	1	2
N95 Masks**	21	6	3	0	0	3
Surgical Masks**	25	4	1	0	0	3
Face Shields**	17	3	6	4	0	3
Gloves**	17	5	8	0	0	3
Gowns**	15	8	6	1	0	3

**Hospital Criteria for shifting to Crisis Care Strategies**

**LEGEND**

CRITERIA	STATUS		
	Normal Operations	Modified Operations	Modified Operations Assistance Needed
Rate of change in Hospitalized COVID-19 patients (doubling time over last 7 days)	Never to 4 weeks to double	4 weeks to 2 weeks to double	Less than 2 weeks to double
Absolute COVID-19 Census in the hospitals across Orange County	Less than 750	750-1500	>1500
Hospital census as a percentage of staffed capacity	<80%	80% to 90%	>90%
Hospital ICU census as a percentage of staffed ICU capacity	<70%	70% to 85%	>85%

**Hospital Criteria for shifting to Crisis Care Strategies**

**03/09/21**

CRITERIA	STATUS		
	Normal Operations	Modified Operations Under Control	Modified Operations Assistance Needed
Rate of change in Hospitalized COVID-19 patients (doubling time over last 7 days)	Declining		
Absolute COVID-19 Census in the hospitals across Orange County	277		
Hospital census as a percentage of staffed capacity	66%		
Hospital ICU census as a percentage of staffed ICU capacity	65%		

### AGENCY OPERATIONS CENTER / LOGISTICS SECTION

- The AOC is activated on **Wednesdays from 0900-1600 at Level II**; Warehouse Ops are M-F - 0900-1600.
- SCARCE Resources: Gloves, Syringes, Needles

#### Total Activity – Updated 3/3/21 at 1530

INQUIRIES	RR RECEIVED	RR FILLED
18,459 <b>+112</b>	10,976 <b>+90</b>	8,942 <b>+59</b>
Total Denied Requests: <b>885</b> / Total Redacted Requests: <b>946</b>		

#### Inventory Report 02/18/20 to 03/3//21

##### Logistics Daily Units Distributed 3/3/21

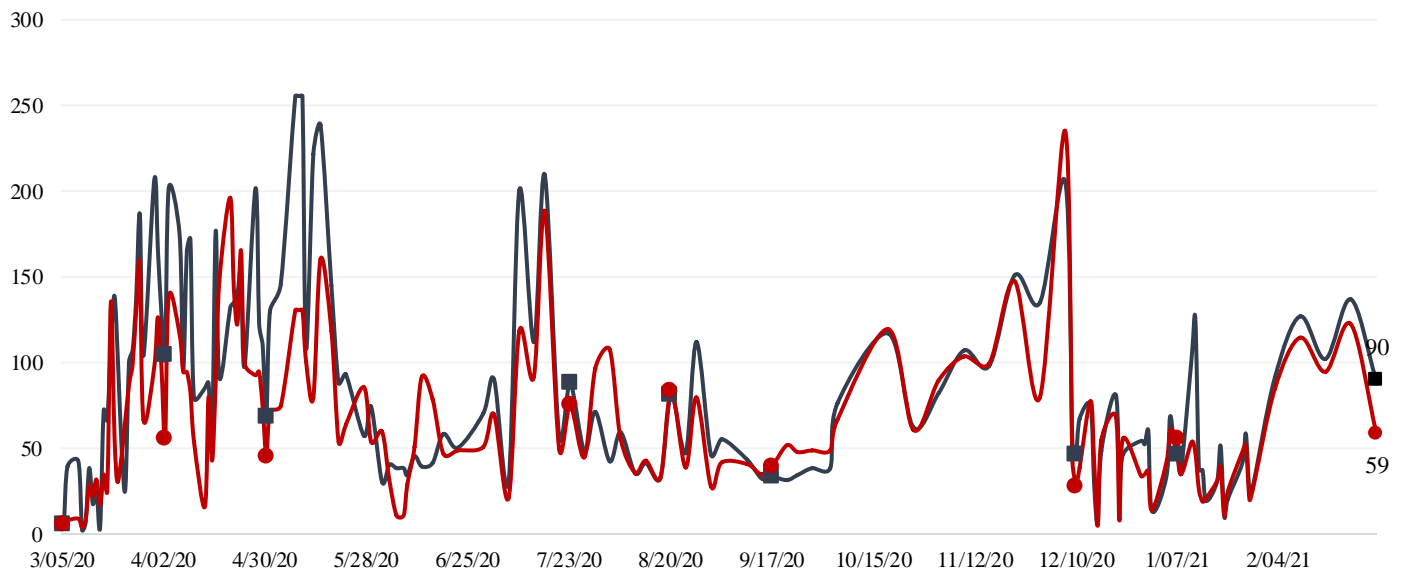
N95 Mask	1,100
Surgical Mask	13,500
Gown	0
Gloves	192,100
Face Shields/Eye Protection	0
Hand Sanitizer	0
Other	39,643
<b>Total Units</b>	<b>246,343</b>

##### Medical Supply/Equipment Total Units Distributed

N95 Mask	5,221,535
Surgical Mask	2,124,405
Gowns	2,905,466
PPE-Suit	17,965
Gloves	7,091,750
Eye Protection	423,084
Hand Sanitizer	317,246
Other Items	2,721,420
<b>Total Units</b>	<b>20,822,871</b>

#### Resource Requests - Updated 3/3/21 at 1530

Received ■ Filled ●



### ALTERNATE CARE SITE (ACS)

- Fairview Alternate Care Site (FACS) opened for admissions on **TUESDAY, 12/15/20 @ 1800**
- FACS will be placed into a “warm close” status on MONDAY, 03/15/2021.** A “warm close” will allow the State of California to maintain the ACS in a semi-ready state and will enable the site to reopen within 72 hours if needed.

Fairview (COVID-19 +)		
Patient Census (as of 3/10/2021 09:00)	CURRENT	TOTAL
Orange County	5	140
LA County	0	71
Riverside	0	6
San Bernardino County	0	4
Ventura County	0	1
Total patients CENSUS / TOTAL ACCEPTED	5	222
Patients Discharged		TOTAL
DISCHARGED		217
Memory Care Unit (MCU) Census (as of 3/2/2021 17:00)		
MCU Patient Census	5	50
Patients Discharged from MCU		TOTAL
MCU - DISCHARGED		45

### MOBILE FIELD HOSPITALS (MFHs)

- MFHs are capable of expanding current hospital capacity by adding additional patient beds.
- They are large heavy duty canvas tents with hard flooring and temperature controlled units.
- They can be configured in a myriad of footprints and sizes (i.e. 25-200 patient bed).
- OCEMS has a total of 8 trailers to support at minimum, 200 patient beds.
- CDPH is primed and ready to provide hospitals a waiver to allow emergency use of these MFHs.
  - Hospitals who have self-identified in receiving a MFH include:

- UCI (50 patient bed) – currently used for patient care activities**
- Fountain Valley (25 patient bed) – converting to community vaccination clinic facility**
- Los Alamitos (25 patient bed) – demobilized**
- Saint Jude (50 patient bed) – planning to demobilize week of March 22.**

