

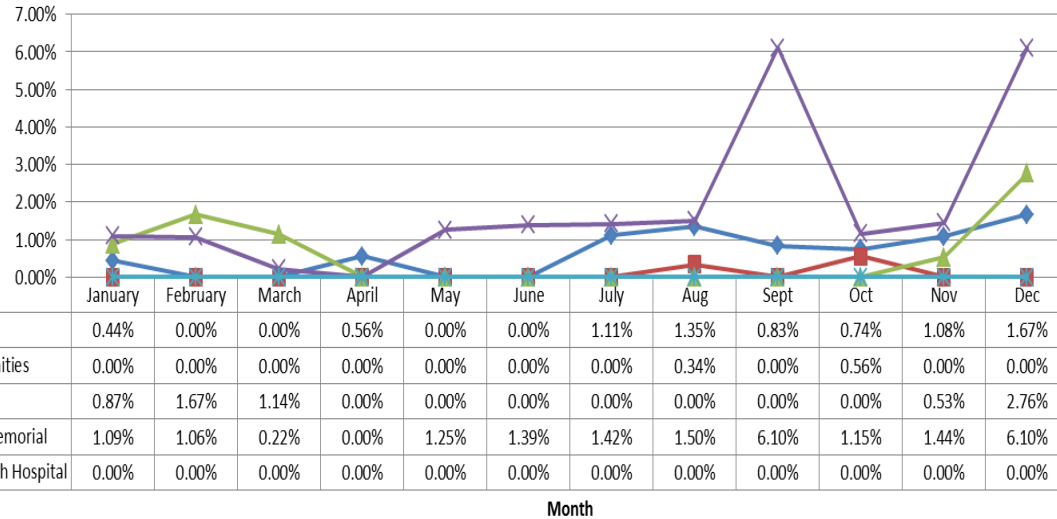




## Orange County Emergency Medical Services Diversion Report – January through December- 2014



### Coastal Area- 2014 ERC Diversion



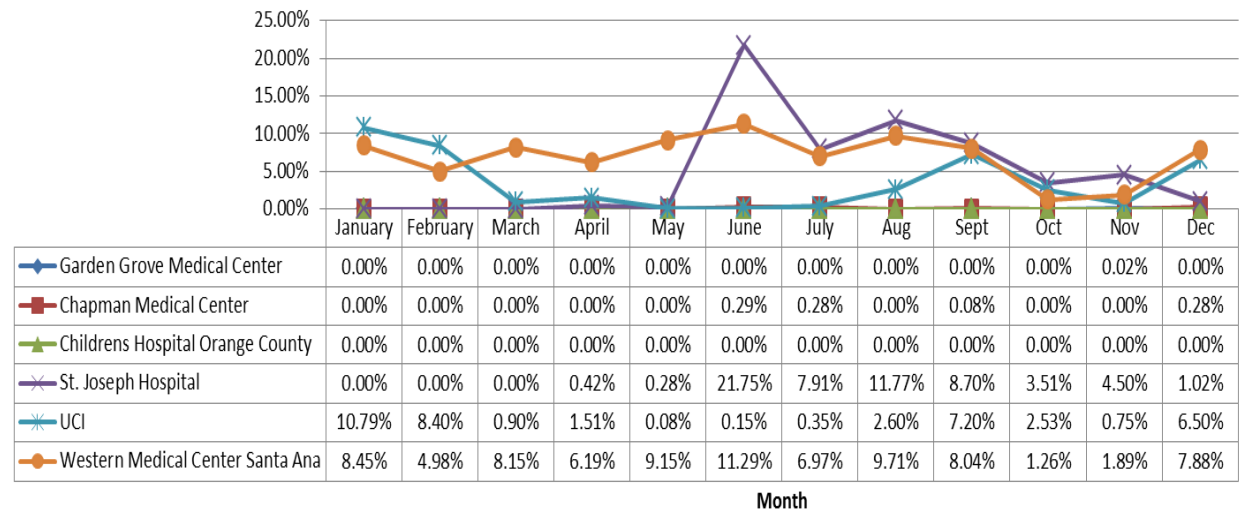
#### Coastal Area Includes:

- Hoag Hospital Newport Beach
- Coastal Communities Hospital
- Fountain Valley Hospital
- Orange Coast Memorial Medical Center
- Huntington Beach Hospital

#### Central Area Includes:

- Garden Grove Medical Center
- Chapman Medical Center
- Children’s Hospital Orange County
- St. Joseph Hospital
- UCI
- Western Medical Center Santa Ana

### Central Area- 2014 ERC Diversion

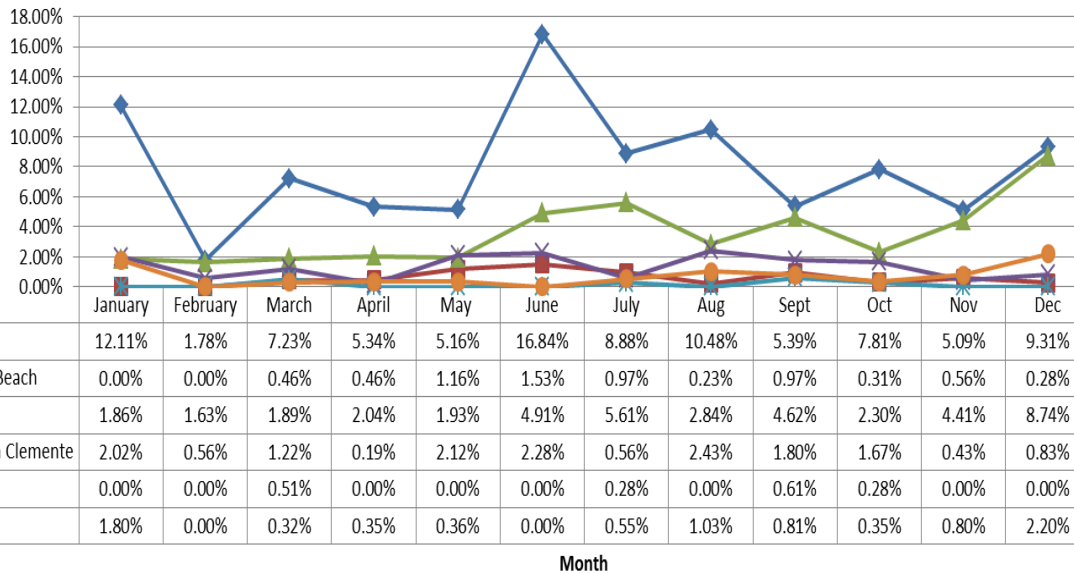




## Orange County Emergency Medical Services Diversion Report – January through December- 2014



### South Area- 2014 ERC Diversion

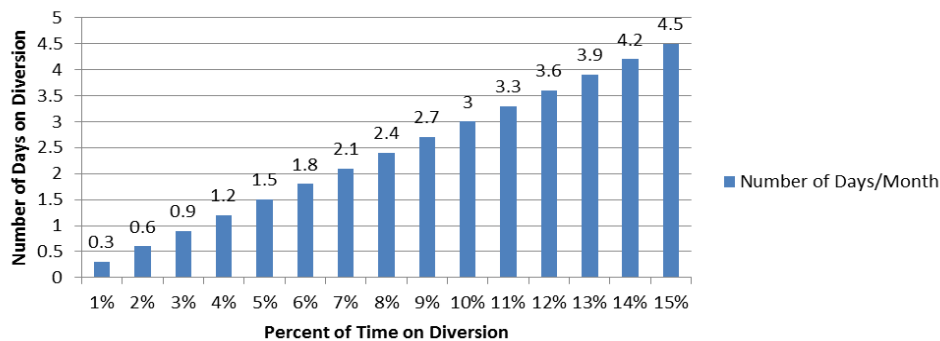


#### South Area Includes:

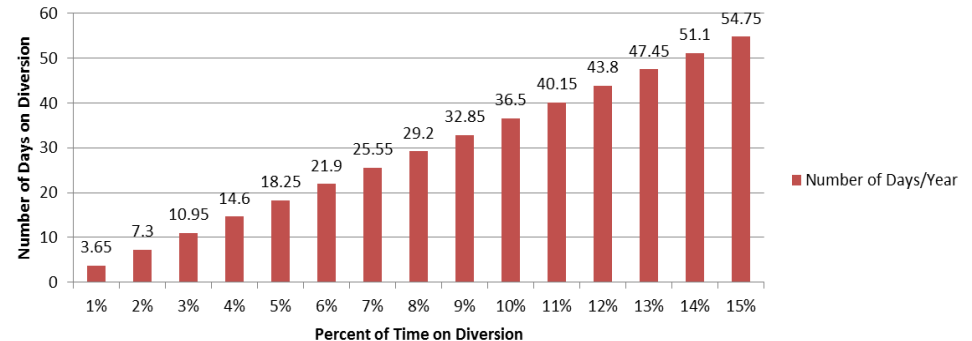
- Mission Hospital – Mission Viejo
- Mission Hospital – Laguna Beach
- Saddleback Memorial Medical Center Laguna Hills
- Saddleback Memorial Medical Center- San Clemente
- Kaiser Hospital – Irvine
- Hoag Hospital - Irvine

The following tables demonstrate the monthly and annual impact of disclosure in the total number of days the ERC would not receive patients.

#### Number of Days/Month on Diversion



#### Number of Days/Year on Diversion



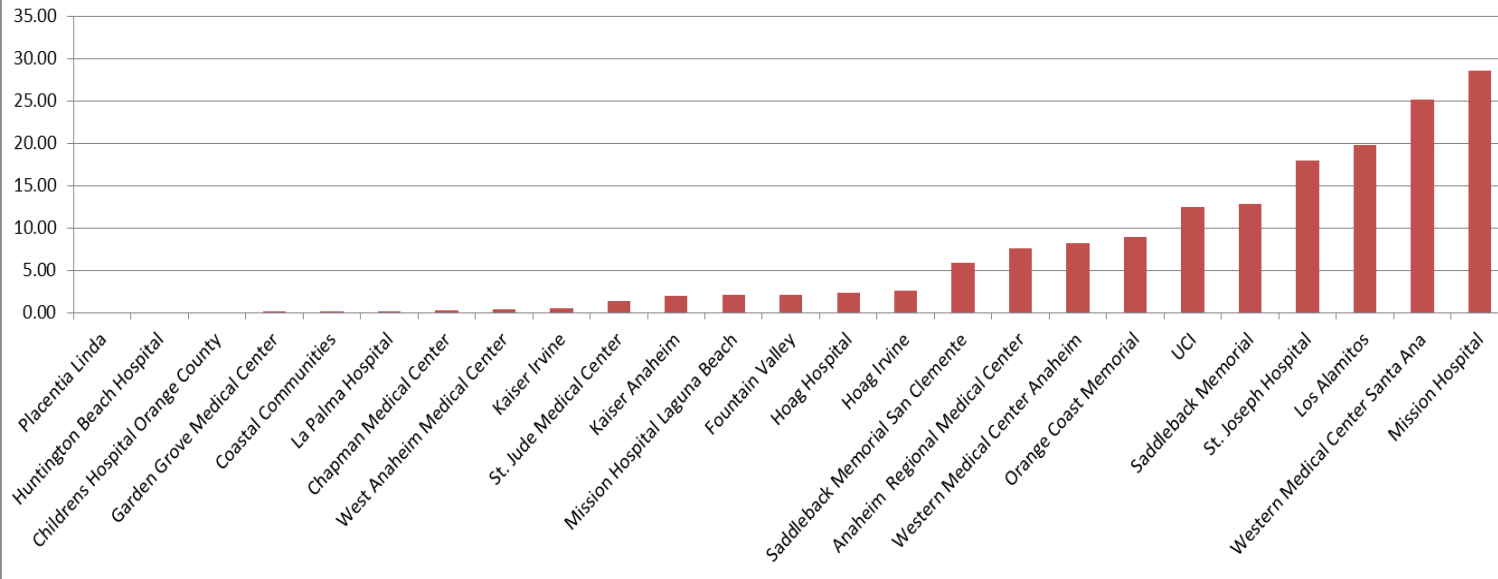
Note: Number of days/month based on 30 days in a month



## Orange County Emergency Medical Services Diversion Report – January through December- 2014



### Total Number of Days ED Was Closed in 2014



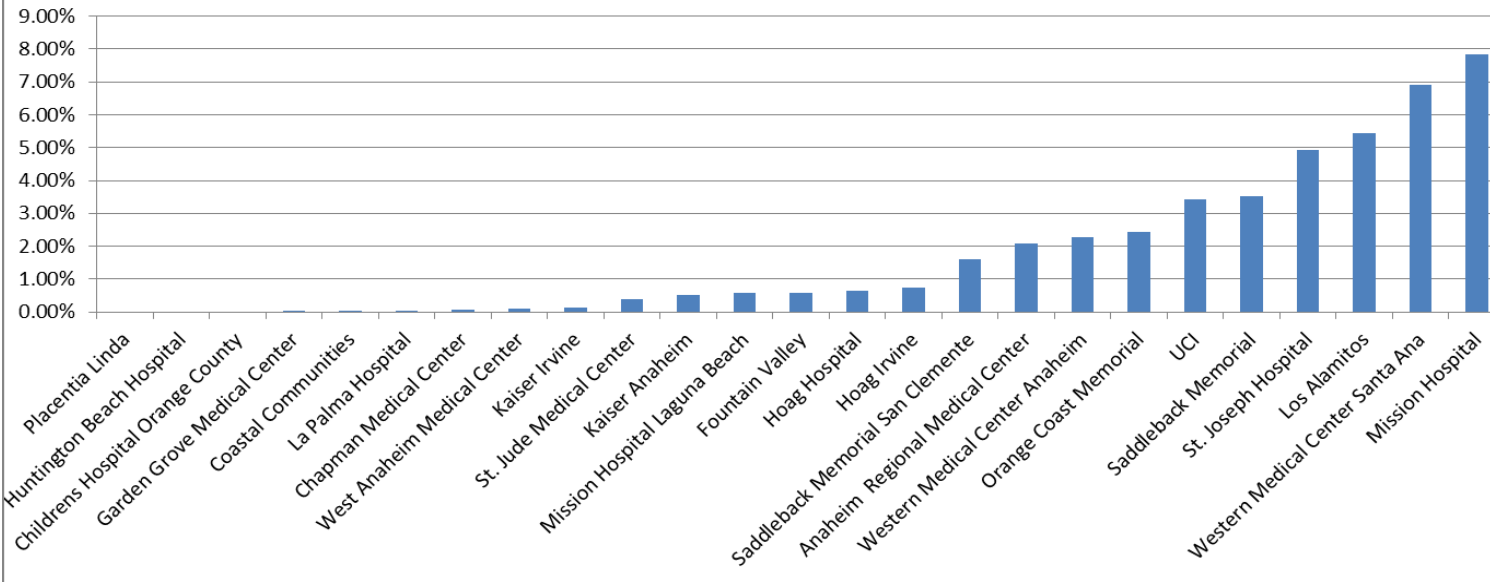
Total Number of Days ED Closed in 2014	
Placentia Linda	0.00
Huntington Beach Hospital	0.00
Childrens Hospital Orange County	0.00
Garden Grove Medical Center	0.00
Coastal Communities	0.03
La Palma Hospital	0.05
Chapman Medical Center	0.28
West Anaheim Medical Center	0.35
Kaiser Irvine	0.50
St. Jude Medical Center	1.42
Kaiser Anaheim	1.94
Mission Hospital Laguna Beach	2.08
Fountain Valley	2.09
Hoag Hospital	2.34
Hoag Irvine	2.66
Saddleback Memorial San Clemente	5.88
Anaheim Regional Medical Center	7.61
Western Medical Center Anaheim	8.27
Orange Coast Memorial	8.90
UCI	12.53
Saddleback Memorial	12.84
St. Joseph Hospital	17.95
Los Alamitos	19.82
Western Medical Center Santa Ana	25.18
Mission Hospital	28.63



**Orange County Emergency Medical Services  
Diversion Report – January through December- 2014**



**Total Percent of Time ED Closed in 2014**



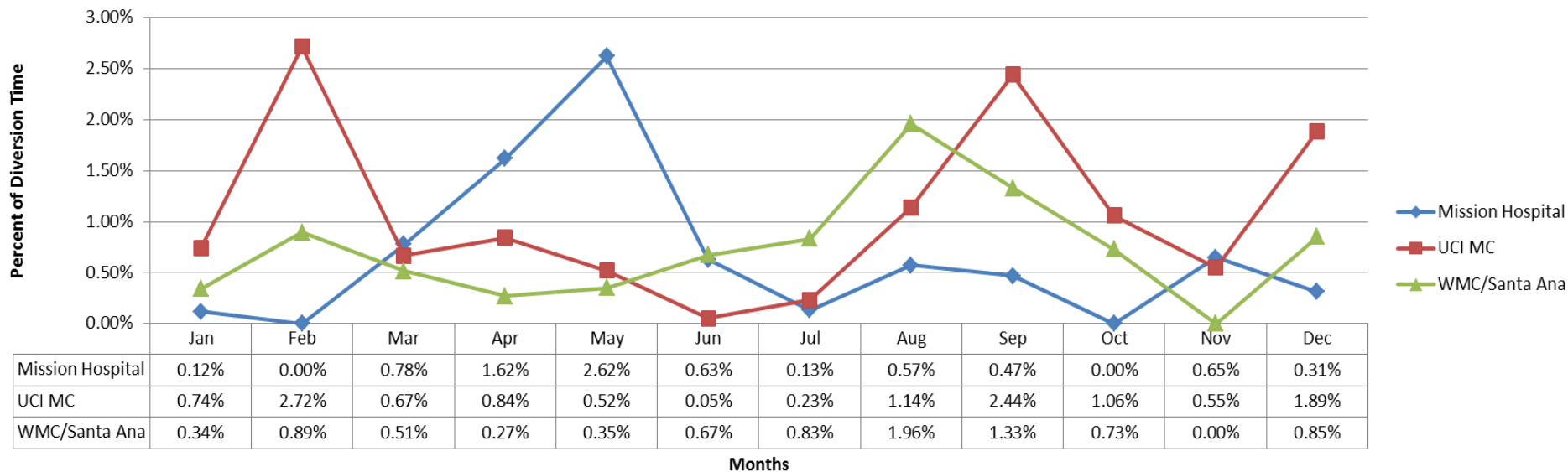
Total Percent of Time ED Closed in 2014	
Placentia Linda	0.00%
Huntington Beach Hospital	0.00%
Childrens Hospital Orange County	0.00%
Garden Grove Medical Center	0.00%
Coastal Communities	0.01%
La Palma Hospital	0.01%
Chapman Medical Center	0.08%
West Anaheim Medical Center	0.09%
Kaiser Irvine	0.14%
St. Jude Medical Center	0.39%
Kaiser Anaheim	0.53%
Mission Hospital Laguna Beach	0.57%
Fountain Valley	0.57%
Hoag Hospital	0.64%
Hoag Irvine	0.73%
Saddleback Memorial San Clemente	1.61%
Anaheim Regional Medical Center	2.08%
Western Medical Center Anaheim	2.27%
Orange Coast Memorial	2.44%
UCI	3.43%
Saddleback Memorial	3.52%
St. Joseph Hospital	4.92%
Los Alamitos	5.43%
Western Medical Center Santa Ana	6.90%
Mission Hospital	7.84%



## Orange County Emergency Medical Services Diversion Report – January through December- 2014



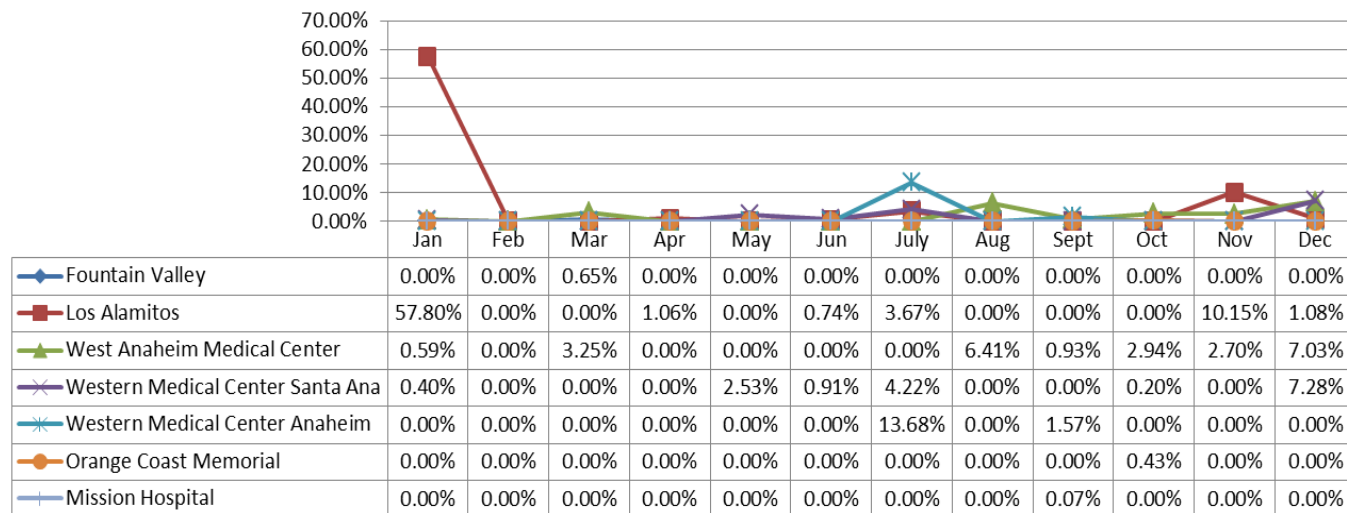
### Trauma Diversion 2014



### CVRC's with No Diversion Jan-Dec 2014

- Anaheim Regional Medical Center
- Hoag Hospital Irvine
- Hoag Hospital Newport Beach
- Saddleback Memorial Medical Center
- St Joseph Hospital
- St Jude Medical Center
- UCI

### CVRC's With Diversion Hours 2014





**Orange County Emergency Medical Services  
Diversion Report – January through December- 2014**



Internal Disruption 2014	Jan	Feb	Mar	Apr	May	Jun	Jul	Aug	Sept	Oct	Nov	Dec
Anaheim Regional Med Ctr							0.15%					
Chapman Med Ctr				0.32%					0.11%		0.01%	0.33%
CHOC									0.19%			
Coastal Comm Hosp				0.31%	0.32%					0.37%		
Fountain Valley		0.04%	0.32%	0.31%								
Garden Grove												
Hoag Irvine							0.71%					
Hoag Newport												
Huntington Beach							0.70%					
Kaiser Irvine							0.04%					
Kaiser Anaheim			0.28%			0.07%						
La Palma												
Los Alamitos												
Mission Hospital									0.07%			
Mission Laguna Beach								1.51%		0.17%		
Orange Coast Memorial						0.21%	0.06%					0.50%
Placentia Linda									0.09%			
Saddleback Laguna Hills						0.21%						
Saddleback San Clemente							0.07%					
St Joseph											0.84%	
St Jude					0.36%						0.38%	
UCI												
West Anaheim												
West Med Ctr -Anaheim										0.08%		
West Med Ctr - Santa Ana												

**Internal Disruption**

Internal Disruption Data for ERCs  
January to December 2014

**CT Diversion**

17 of 25 ERCs on CT Diversion  
January to December 2014

CT Diversion 2014	Jan	Feb	Mar	Apr	May	Jun	Jul	Aug	Sept	Oct	Nov	Dec
Anaheim Regional	0.48%	4.90%			0.30%		1.1%	2.7%	1.9%	0.9%		0.5%
Chapman				0.84%				0.6%	18.5%			
Coastal Communities					9.33%	1.89%	6.1%					2.2%
Fountain Valley			0.01%									
Garden Grove				0.71%	0.54%					0.5%		
Hoag Hospital Irvine	0.33%	0.22%	0.33%	1.56%	0.55%		1.3%	1.0%		0.4%	0.3%	0.5%
Huntington Beach	0.82%	1.59%	2.34%		0.52%		0.2%					0.2%
Kaiser- Anaheim			0.06%							1.2%		
Kaiser- Irvine	0.11%	0.50%	0.73%									
La Palma	1.92%	2.13%	0.36%				2.4%			0.1%		
Los Alamitos		0.20%	0.28%	1.07%			2.5%	0.3%	0.1%			
Mission Hospital									0.1%			
Mission - Laguna Beach	0.49%							0.8%				1.9%
Orange Coast					0.05%							0.3%
Placentia Linda								0.2%				
Saddleback San Clemente								0.1%				
Saddleback Lagunal Hills												0.6%
WMC/Anaheim	0.07%	0.23%	3.38%	1.07%	2.57%	0.57%	0.1%		0.1%	0.6%	1.0%	