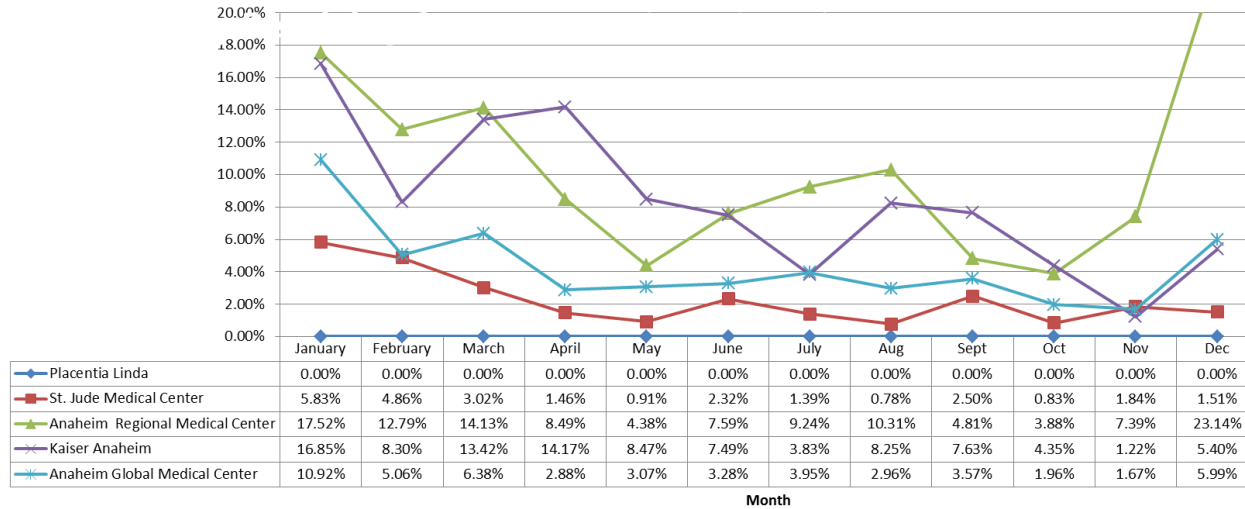




**Orange County
Emergency Medical Services
Diversion Report
January 1 to December 31, 2015**

Emergency Receiving Center Diversion- Percent of Time

North Area- 2015 ERC Diversion



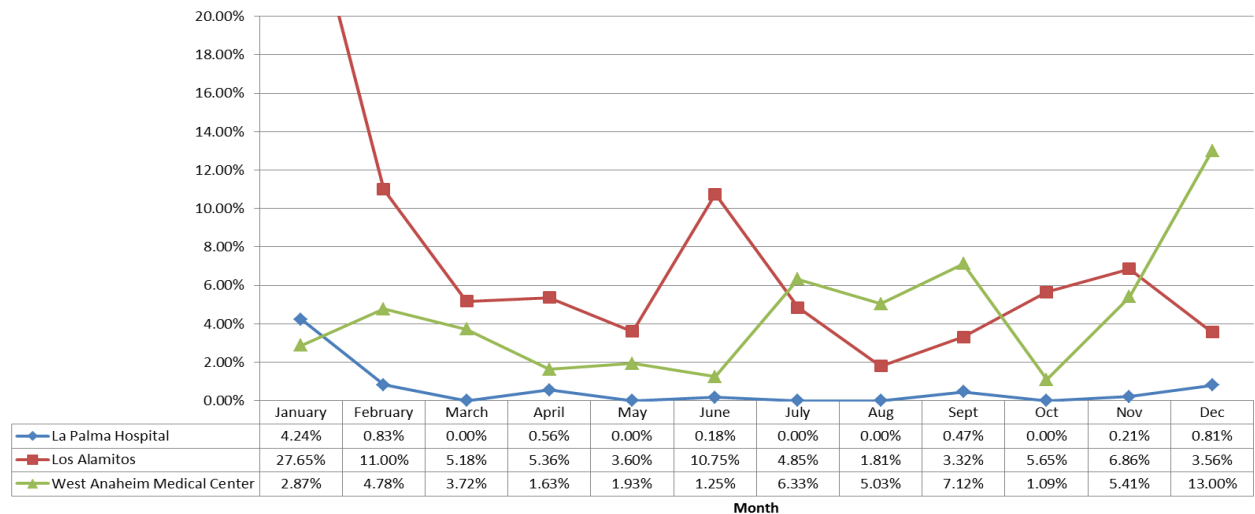
North Area Includes:

- Placentia Linda Hospital
- St. Jude Medical Center
- Anaheim Regional Medical Center
- Kaiser Anaheim
- Anaheim Global Medical Center

West Area Includes:

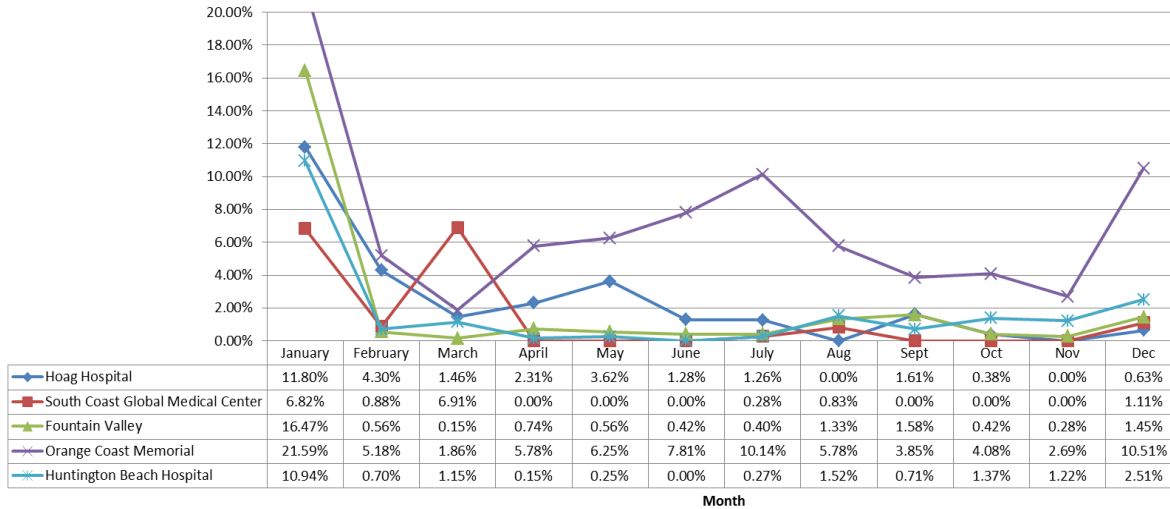
- La Palma Hospital
- Los Alamitos Medical Center
- West Anaheim Medical Center

West Area - 2015 ERC Diversion



Emergency Receiving Center Diversion- Percent of Time

Coastal Area- 2015 ERC Diversion



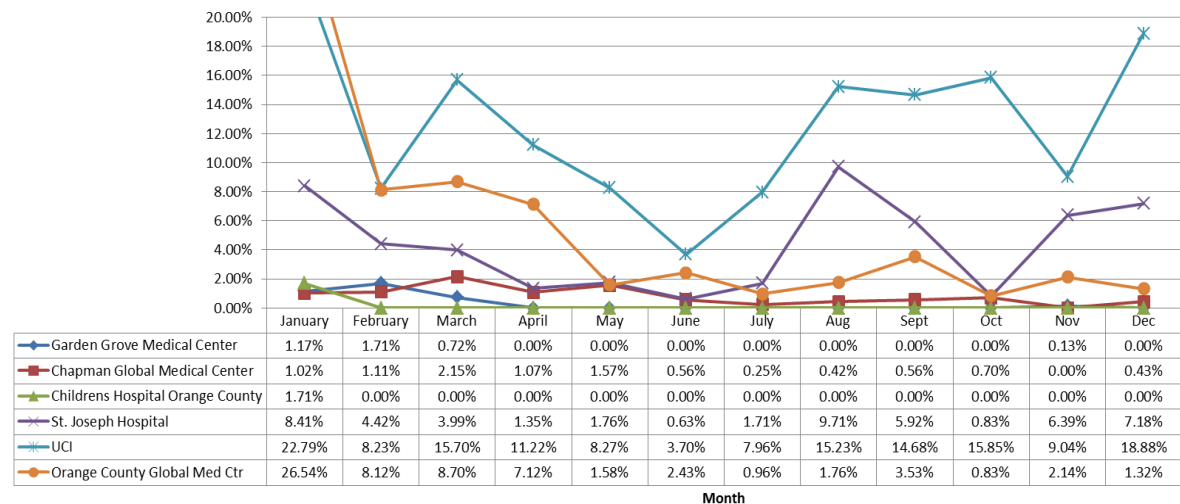
Coastal Area Includes:

- Hoag Hospital Newport Beach
- South Coastal Global Medical Center
- Fountain Valley Hospital
- Orange Coast Memorial Medical Center
- Huntington Beach Hospital

Central Area Includes:

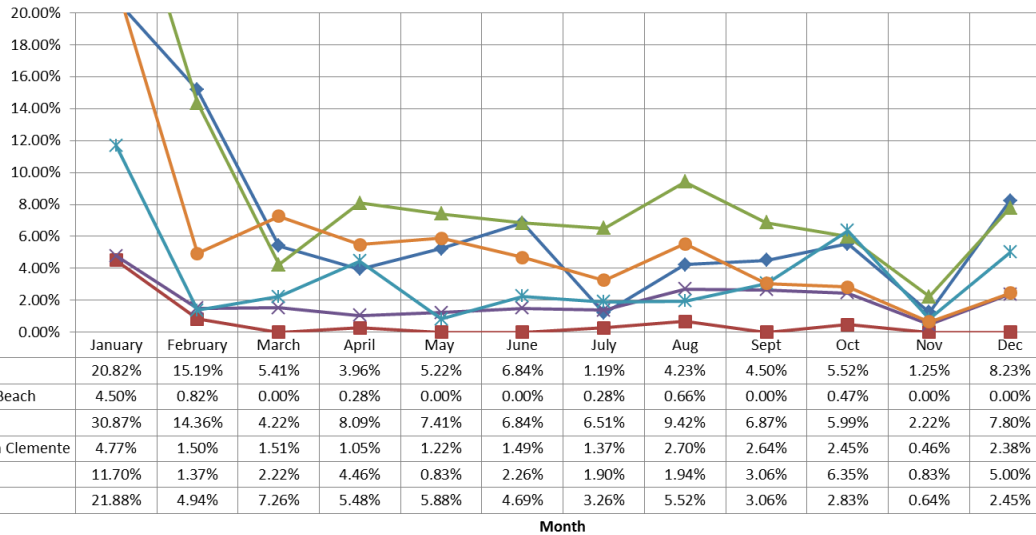
- Garden Grove Medical Center
- Chapman Global Medical Center
- Children's Hospital Orange County
- St. Joseph Hospital
- UCI
- Orange County Global Medical Center

Central Area- 2015 ERC Diversion



Emergency Receiving Center Diversion- Percent of Time

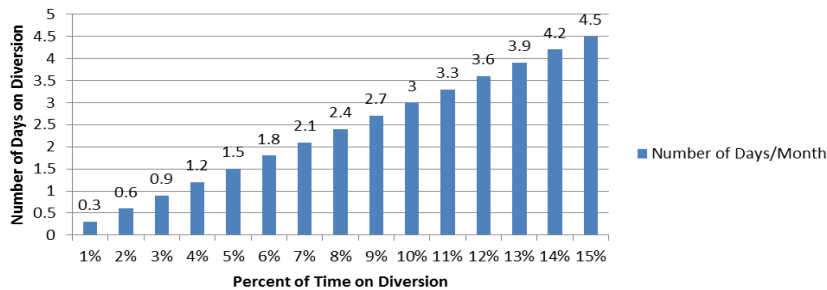
South Area- 2015 ERC Diversion



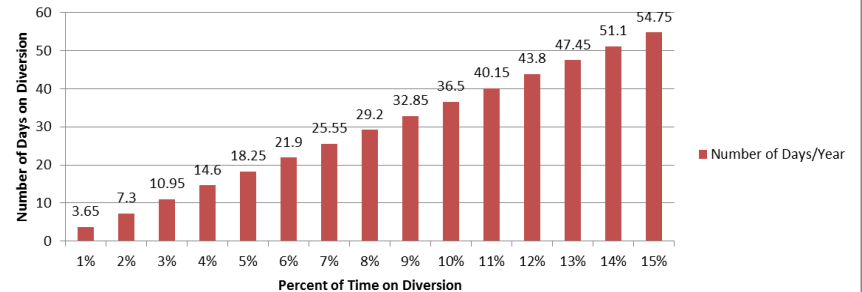
South Area Includes:

- Mission Hospital – Mission Viejo
- Mission Hospital – Laguna Beach
- Saddleback Memorial Medical Center
- Laguna Hills
- Saddleback Memorial Medical Center- San Clemente
- Kaiser Hospital – Irvine
- Hoag Hospital - Irvine

Number of Days/Month on Diversion



Number of Days/Year on Diversion



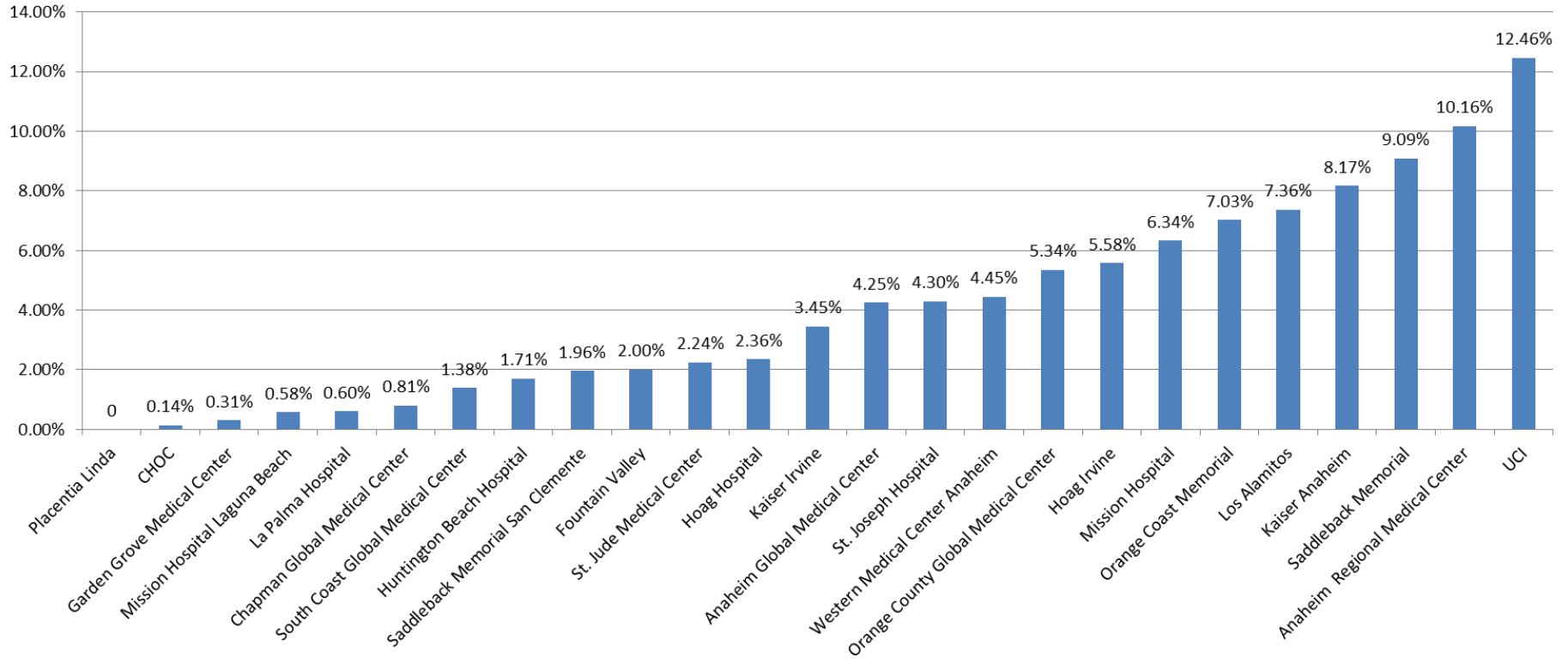
The following tables demonstrate the monthly and annual impact of disclosure in the total number of days the ERC would not receive patients.

Note: Number of days/month based on 30 days in a month

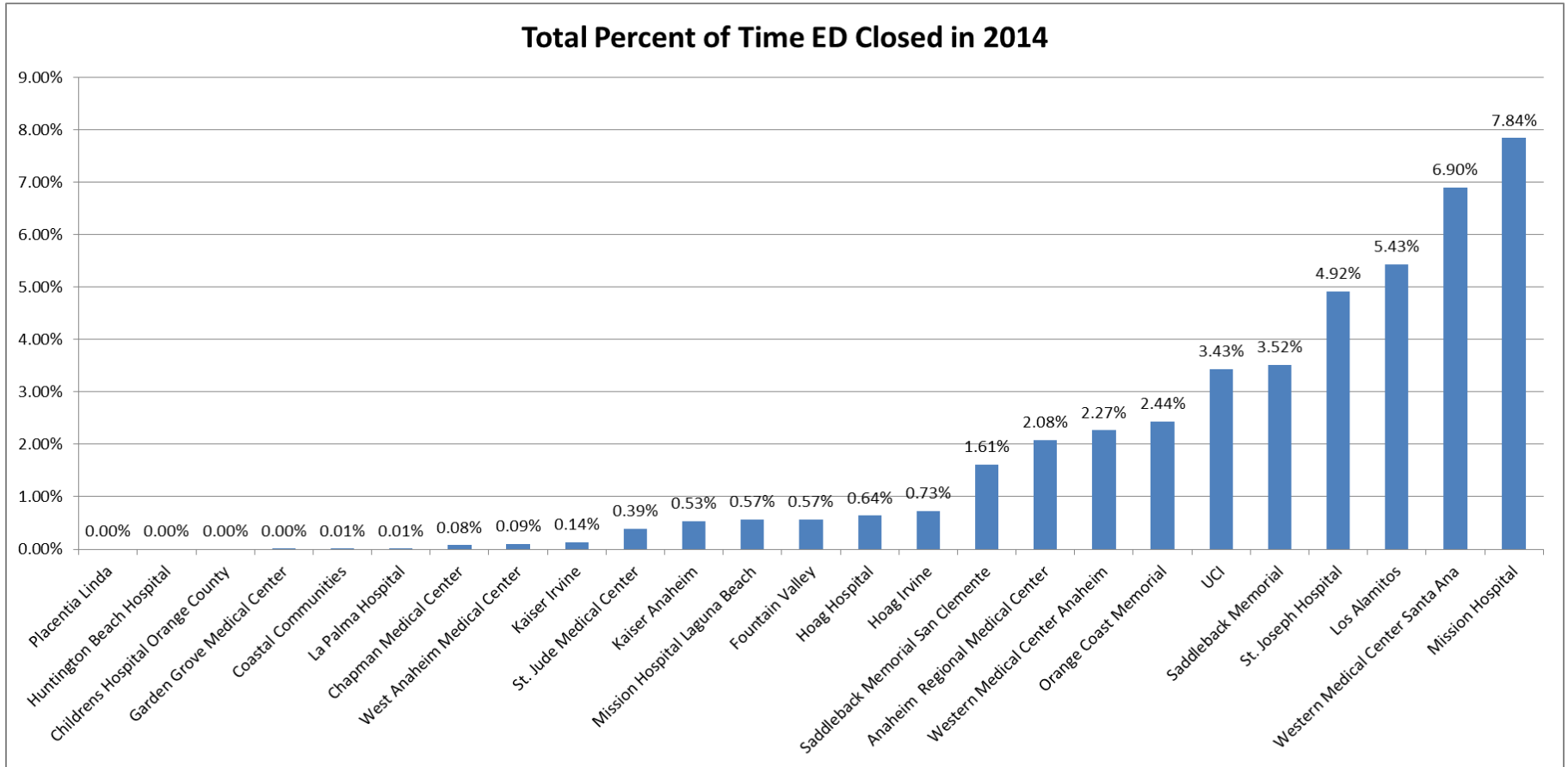


Emergency Receiving Center- Annual Percent of Time on Diversion

Total Percent of Time ED Closed in 2015

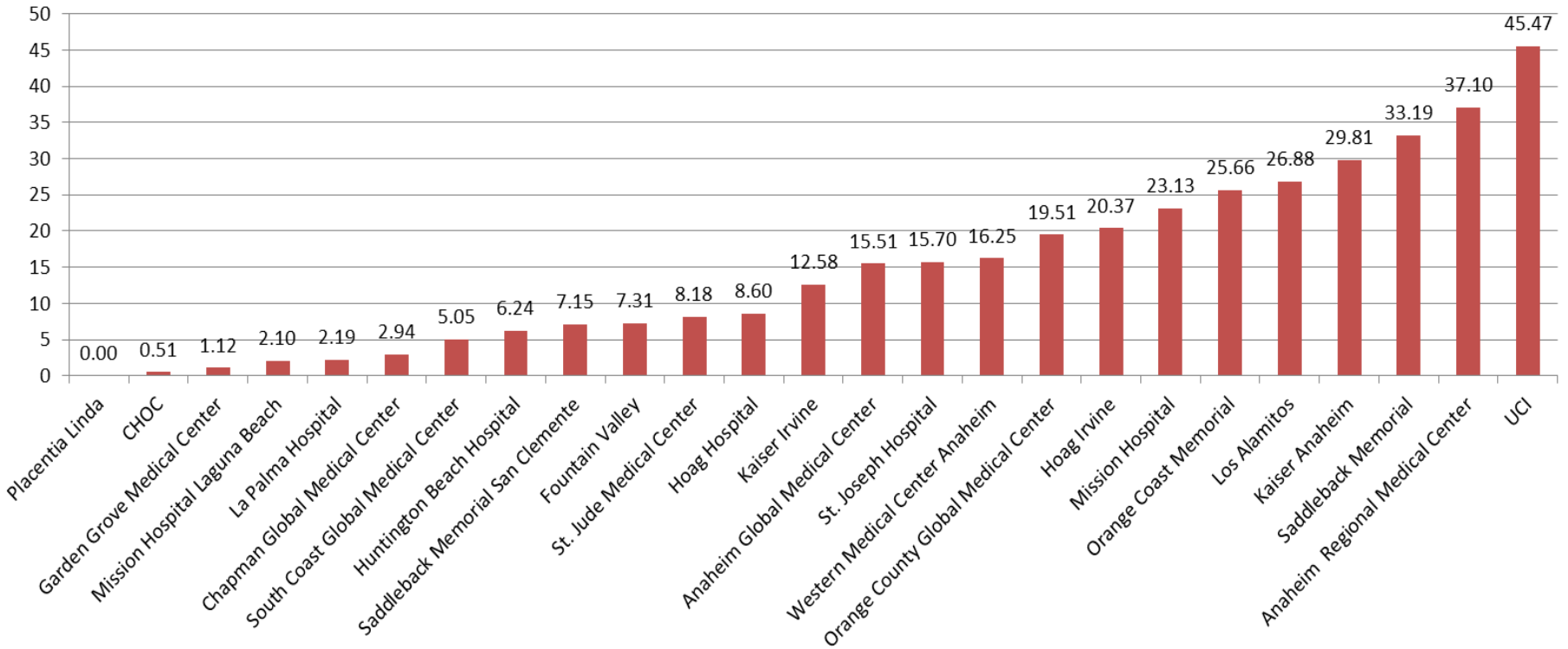


Emergency Receiving Center- Annual Percent of Time on Diversion



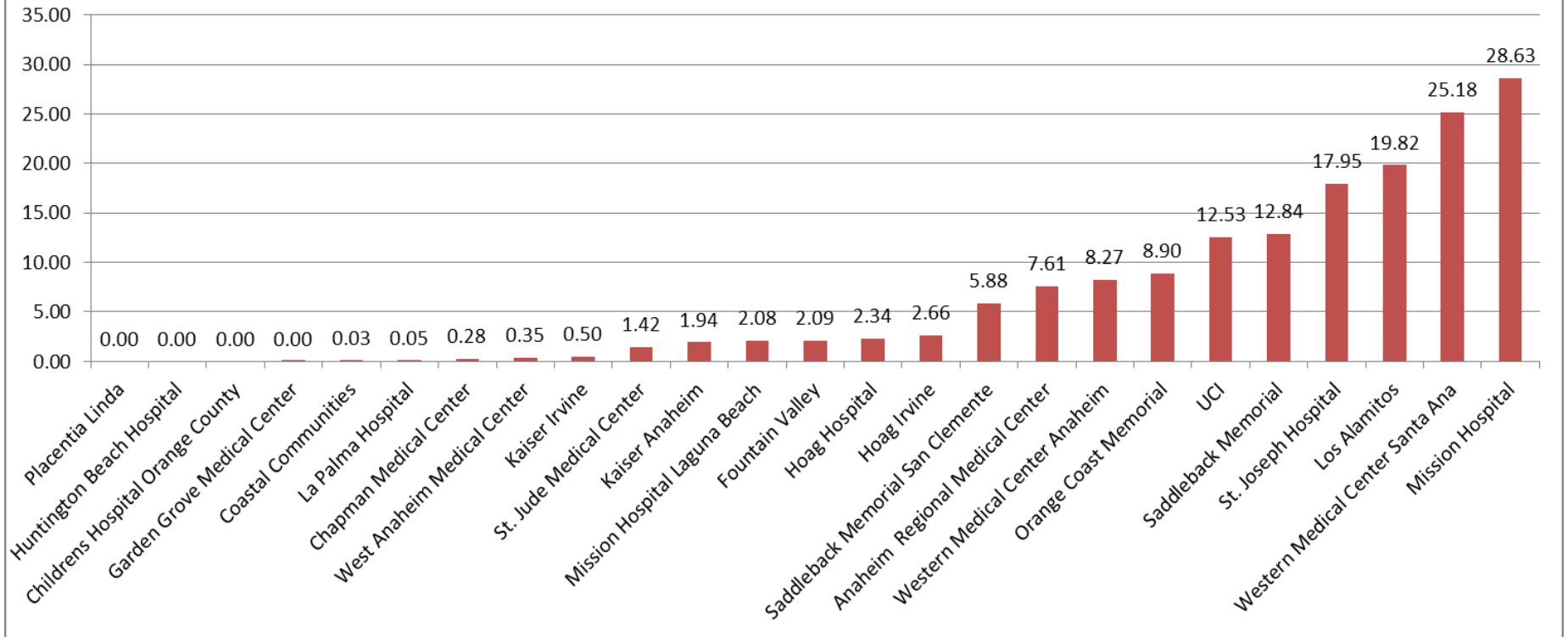
Emergency Receiving Center- Annual Number of Days on Diversion

Total Number of Days ED Closed in 2015



Emergency Receiving Center- Annual Number of Days on Diversion

Total Number of Days ED Closed in 2014



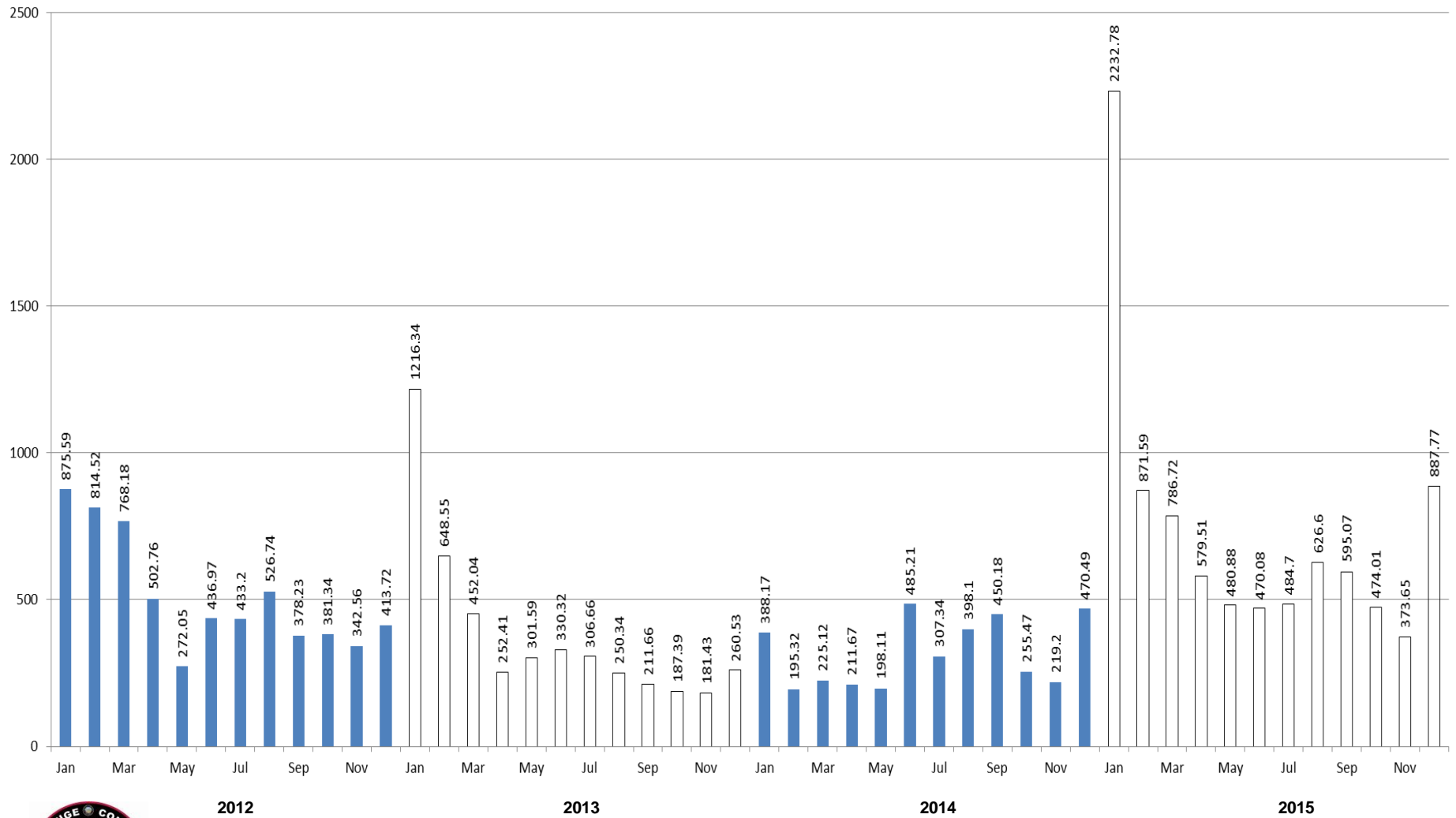
Emergency Receiving Center Diversion- Total Hours

Emergency Receiving Center Diversion Hours 2015												
	Jan	Feb	Mar	Apr	May	Jun	Jul	Aug	Sept	Oct	Nov	Dec
Anaheim Regional Med Ctr	126.12	92.07	101.72	61.1	31.53	54.63	66.55	74.27	34.67	27.93	53.22	166.62
Chapman Global Med Ctr	7.35	8	15.45	7.68	11.3	4	1.77	3	4	5.02	0	3.08
CHOC	12.33	0	0	0	0	0	0	0	0	0	0	0
South Coast Global Medical C	49.13	6.33	49.77	0	0	0	2	0.83	0	0	0	8
Fountain Valley	118.55	4.07	1.1	5.33	4	3.05	2.9	1.33	11.38	3	2	10.45
Garden Grove	8.42	12.28	5.18	0	0	0	0	0	0	0	0.97	0
Hoag Irvine	157.53	35.6	52.28	39.45	42.32	33.78	23.47	39.75	22.02	20.4	4.62	17.67
Hoag Newport	87.98	30.97	10.52	16.65	26.07	9.23	9.05	0	11.58	2.72	0	4.57
Huntington Beach	78.8	5.07	8.27	1.05	1.8	0	1.93	1.52	5.08	9.88	8.78	18.08
Kaiser Irvine	84.25	9.87	16	32.12	6	16.3	13.67	14	22.03	45.7	6	36
Kaiser Anaheim	121.3	59.75	96.63	102.02	60.97	53.95	27.57	59.42	54.95	31.33	8.82	38.85
La Palma	30.53	6	0	4	0	1.28	0	0	3.37	0	1.48	5.82
Los Alamitos	199.07	79.22	37.3	38.6	25.95	77.4	34.92	13.05	23.92	40.7	49.4	25.6
Mission Hospital	149.92	109.33	38.98	28.52	37.57	11.43	8.55	30.43	32.43	39.72	8.97	59.25
Mission Laguna Beach	32.42	5.92	0	2	0	0	2	4.77	0	3.38	0	0
Orange Coast Memorial	155.42	37.32	13.4	41.6	45.03	56.27	73.03	41.6	32.43	29.37	19.4	75.65
Placentia Linda	0	0	0	0	0	0	0	0	0	0	0	0
Saddleback Laguna Hills	222.28	103.45	30.4	58.25	53.37	49.28	46.9	67.83	49.48	43.15	15.98	56.17
Saddleback San Clemente	34.33	10.82	10.9	7.55	8.82	1.49	9.88	19.43	19.02	17.65	3.28	17.15
St Joseph	60.57	31.85	28.72	9.75	12.7	4.53	12.33	69.93	42.65	6	46	51.7
St Jude	41.98	35.05	21.77	10.55	6.55	16.73	10	5.6	18	6	13.22	10.9
UCI	164.1	59.27	113.03	80.82	59.52	26.65	57.28	109.63	105.68	114.13	65.1	135.97
West Anaheim	20.67	34.45	26.78	11.72	13.88	8.98	45.55	36.2	51.28	7.83	38.98	93.62
Anaheim Global MC	78.65	36.47	45.9	20.75	22.12	23.58	28.45	21.33	25.7	14.1	12	43.1
Orange County Global MC	191.08	58.43	62.62	0	11.38	17.52	6.9	12.68	25.4	6	15.43	9.52
Total	2232.78	871.59	786.72	579.51	480.88	470.08	484.7	626.6	595.07	474.01	373.65	887.77

** Highlighted in Red=Diversion >6%

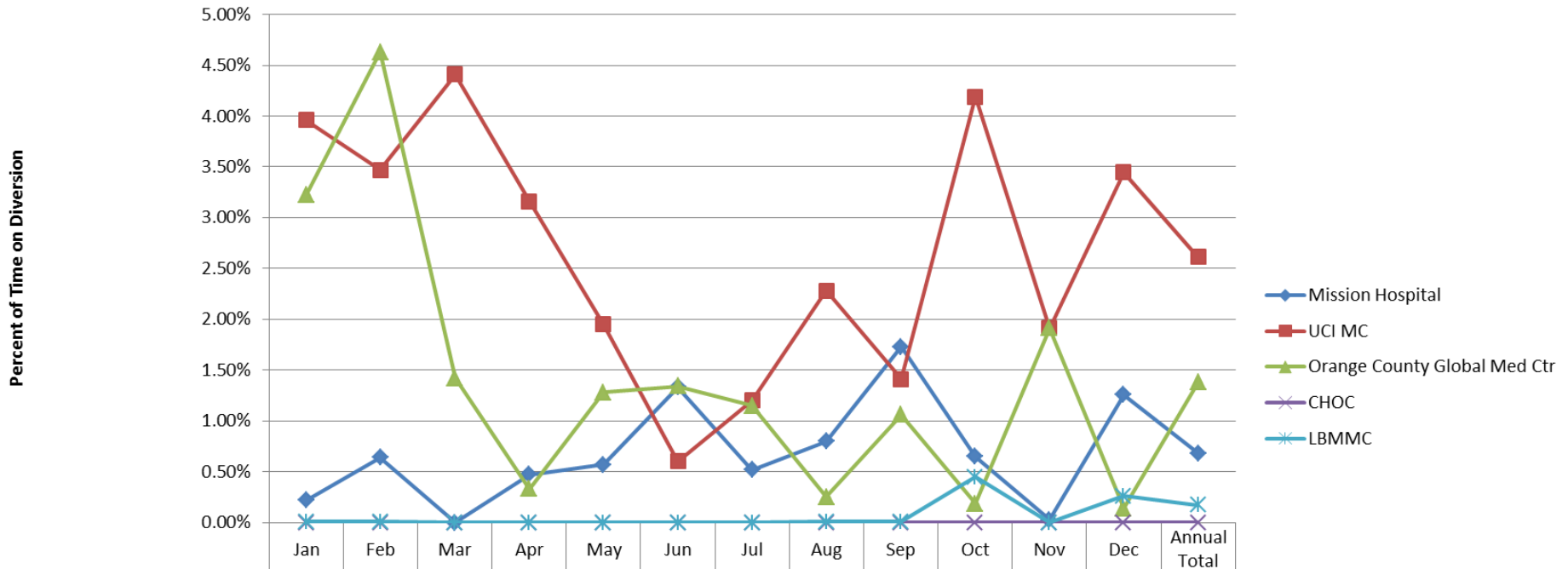


Emergency Receiving Center Diversion- 2012-2015



Trauma Receiving Center Diversion- Percent of Time

Trauma Diversion 2015



Mission Hospital	0.22%	0.64%	0.00%	0.47%	0.57%	1.33%	0.52%	0.80%	1.73%	0.65%	0.03%	1.26%	0.68%
UCI MC	3.96%	3.47%	4.41%	3.16%	1.95%	0.60%	1.20%	2.28%	1.41%	4.19%	1.91%	3.45%	2.61%
Orange County Global Med Ctr	3.22%	4.63%	1.42%	0.33%	1.28%	1.34%	1.15%	0.25%	1.06%	0.19%	1.91%	0.14%	1.38%
CHOC	0.00%	0.00%	0.00%	0.00%	0.00%	0.00%	0.00%	0.00%	0.00%	0.00%	0.00%	0.00%	0.00%
LBMCC	0.01%	0.01%	0.00%	0.00%	0.00%	0.00%	0.00%	0.0%	0.01%	0.45%	0.00%	0.26%	0.17%



Cardiovascular Receiving Center Diversion- Percent of Time

CVRC 2015												
	Jan	Feb	Mar	Apr	May	Jun	Jul	Aug	Sept	Oct	Nov	Dec
Anaheim Regional	0.26%	0.00%	0.00%	0.00%	0.00%	0.00%	0.0%	0.0%	0.0%	0.0%	0.0%	0.0%
Fountain Valley	0.00%	0.00%	0.00%	0.00%	0.00%	0.00%	0.0%	0.0%	0.0%	0.0%	0.0%	0.0%
Hoag Hospital Irvine	0.00%	0.00%	0.54%	0.00%	0.00%	0.00%	0.0%	0.0%	0.0%	0.0%	0.0%	0.0%
Hoag Hospital Newport Beach	0.00%	0.00%	0.00%	0.00%	0.00%	0.00%	0.0%	0.0%	0.0%	0.0%	0.0%	0.0%
Los Alamitos	3.63%	5.18%	0.00%	2.73%	0.00%	1.15%	3.7%	0.0%	0.0%	0.0%	0.0%	0.0%
Orange Coast	0.00%	0.00%	1.04%	0.00%	0.00%	0.00%	3.2%	0.0%	0.3%	0.0%	0.0%	0.0%
Mission Hospital	0.00%	0.00%	0.00%	0.00%	0.00%	0.06%	0.0%	0.0%	0.0%	0.0%	0.0%	0.0%
Saddleback Lagunal Hills	0.00%	0.00%	0.00%	0.00%	0.00%	0.00%	0.0%	0.0%	0.0%	0.0%	0.0%	0.4%
St Joseph	0.00%	0.00%	0.00%	0.00%	0.00%	0.00%	0.0%	0.0%	0.0%	0.0%	0.0%	0.0%
St. Jude	0.00%	0.00%	0.00%	0.00%	0.00%	0.00%	0.0%	0.0%	0.0%	0.0%	0.0%	0.0%
UCI	0.00%	0.00%	0.30%	0.00%	0.00%	0.00%	0.0%	0.0%	0.0%	0.0%	0.0%	0.0%
WAMC	0.56%	6.48%	4.31%	3.58%	0.61%	1.44%	4.2%	1.1%	1.6%	1.3%	1.0%	1.8%
Anaheim Global Medical Ctr	14.21%	1.00%	1.22%	0.28%	0.47%	1.20%	19.7%	17.8%	0.0%	0.7%	0.1%	3.6%
Orang County Global Med Ctr	26.65%	10.62%	4.42%	10.78%	3.03%	4.90%	6.1%	4.5%	12.0%	7.7%	5.3%	5.6%

Highlighted in Red = Diversion Any Amount



Internal Disruption Diversion- Percent of Time

Internal Disruption 2015												
	Jan	Feb	Mar	Apr	May	Jun	Jul	Aug	Sept	Oct	Nov	Dec
Anaheim Regional Med Ctr	0.00%	0.00%	0.00%	0.00%	0.00%	0.00%	0.00%	0.00%	0.00%	0.00%	0.00%	0.00%
Chapman Global Med Ctr	0.00%	0.55%	0.00%	0.00%	0.00%	0.00%	0.00%	0.00%	0.00%	0.00%	0.46%	0.00%
CHOC	0.00%	0.00%	0.00%	0.00%	0.00%	0.00%	0.00%	0.00%	0.00%	0.00%	0.00%	0.00%
South Coast Global Med Ctr	0.00%	1.38%	0.00%	0.00%	0.00%	0.00%	0.00%	1.62%	0.00%	1.88%	0.00%	0.00%
Fountain Valley	0.00%	0.00%	0.00%	0.00%	0.00%	0.00%	0.00%	0.00%	0.00%	0.00%	0.00%	0.00%
Garden Grove	0.00%	0.00%	0.00%	0.00%	0.00%	0.00%	0.00%	0.00%	0.00%	0.00%	0.00%	0.00%
Hoag Irvine	0.55%	0.00%	0.57%	0.00%	0.24%	0.00%	0.11%	0.00%	0.00%	0.00%	0.00%	0.00%
Hoag Newport	0.00%	0.00%	0.09%	0.00%	0.00%	0.00%	0.01%	0.00%	0.00%	0.00%	0.00%	0.00%
Huntington Beach	0.33%	0.95%	0.00%	0.00%	0.00%	0.00%	0.00%	0.00%	0.00%	0.00%	0.00%	0.40%
Kaiser Irvine	0.00%	0.00%	0.00%	0.16%	0.00%	0.00%	0.05%	0.00%	0.00%	0.00%	0.00%	0.00%
Kaiser Anaheim	0.00%	0.00%	0.00%	0.46%	0.00%	0.00%	0.15%	0.00%	0.00%	0.00%	0.00%	0.00%
La Palma	0.00%	0.01%	0.00%	0.00%	0.00%	0.00%	0.00%	0.00%	1.72%	0.00%	0.00%	0.00%
Los Alamitos	0.00%	0.00%	0.00%	0.00%	0.00%	0.00%	0.00%	0.00%	0.00%	0.00%	0.00%	0.00%
Mission Hospital	0.00%	0.11%	0.00%	0.00%	0.00%	0.06%	0.00%	0.01%	0.00%	0.00%	0.00%	0.00%
Mission Laguna Beach	0.00%	2.78%	0.00%	0.81%	0.00%	0.00%	0.00%	0.00%	0.00%	0.00%	0.00%	0.00%
Orange Coast Memorial	0.00%	0.11%	1.08%	0.04%	0.04%	0.00%	0.63%	0.00%	0.00%	0.00%	0.70%	0.00%
Placentia Linda	0.00%	0.00%	0.00%	0.00%	0.00%	0.00%	0.00%	0.00%	0.00%	0.00%	0.00%	0.00%
Saddleback Laguna Hills	0.00%	0.00%	0.00%	0.00%	0.00%	0.00%	0.00%	0.00%	0.00%	0.00%	0.00%	0.00%
Saddleback San Clemente	0.00%	0.00%	0.00%	0.37%	0.00%	0.00%	0.00%	0.00%	0.00%	0.00%	0.00%	0.00%
St Joseph	0.00%	0.00%	0.00%	0.14%	0.00%	0.00%	0.19%	0.00%	0.00%	0.00%	0.00%	0.00%
St Jude	0.00%	0.00%	0.00%	0.00%	0.12%	0.00%	0.00%	0.00%	0.00%	0.00%	0.00%	0.00%
UCI	0.00%	0.00%	0.32%	0.00%	0.00%	0.00%	0.00%	0.00%	0.00%	0.00%	0.00%	0.00%
West Anaheim	0.00%	0.00%	0.00%	0.00%	0.00%	0.00%	0.00%	0.00%	0.02%	0.00%	0.00%	0.00%
Anaheim Global Med Ctr	0.00%	0.00%	0.00%	0.00%	0.00%	0.00%	0.00%	0.00%	0.00%	0.00%	0.00%	0.00%
Orange County Global Med Ctr	0.00%	0.12%	0.28%	0.07%	0.00%	0.00%	0.00%	0.00%	0.00%	0.00%	0.00%	0.10%

Highlighted in Red = Diversion Any Amount



CT Diversion Report- Percent of Time

CT Diversion 2015												
	Jan	Feb	Mar	Apr	May	Jun	Jul	Aug	Sept	Oct	Nov	Dec
Anaheim Regional Med Ctr	2.38%	1.64%	2.39%	1.21%	0.84%	1.60%	2.49%	1.40%	0.62%	2.77%	0.01%	0.32%
Chapman Global Med Ctr	0.00%	0.00%	0.00%	0.17%	0.00%	0.00%	0.00%	0.00%	0.00%	0.84%	0.46%	0.00%
CHOC	0.00%	0.00%	0.00%	0.00%	0.00%	0.00%	0.00%	0.00%	0.00%	0.00%	0.00%	0.00%
South Coast Global Med Ctr	1.13%	0.00%	0.69%	0.00%	0.11%	0.00%	1.88%	1.62%	0.00%	0.00%	18.95%	16.05%
Fountain Valley	0.00%	0.04%	0.00%	0.00%	0.00%	0.00%	0.00%	0.00%	0.00%	0.00%	0.00%	0.00%
Garden Grove	0.00%	0.59%	0.31%	2.24%	0.00%	0.00%	0.40%	0.00%	1.12%	2.15%	1.09%	4.03%
Hoag Irvine	0.70%	1.34%	0.54%	3.38%	0.47%	0.59%	0.61%	0.00%	0.00%	5.44%	0.69%	0.00%
Hoag Newport	0.00%	0.00%	0.04%	0.00%	0.00%	0.00%	0.00%	0.00%	0.00%	0.00%	0.00%	0.00%
Huntington Beach	2.78%	0.35%	0.40%	0.22%	0.34%	0.19%	0.00%	0.00%	0.39%	0.05%	0.00%	2.33%
Kaiser Irvine	0.00%	0.00%	0.00%	0.00%	0.00%	0.00%	0.00%	0.00%	1.25%	0.00%	0.00%	0.00%
Kaiser Anaheim	0.00%	0.00%	0.00%	0.25%	0.00%	0.14%	0.13%	0.00%	0.56%	0.15%	0.00%	0.30%
La Palma	0.00%	0.00%	0.00%	0.00%	0.00%	0.34%	0.00%	0.00%	0.86%	0.00%	0.66%	0.00%
Los Alamitos	0.00%	0.38%	0.00%	0.00%	0.00%	0.12%	0.00%	0.00%	0.00%	0.00%	0.00%	0.00%
Mission Hospital	0.00%	0.00%	0.00%	0.00%	0.00%	0.06%	0.06%	0.00%	0.00%	0.00%	0.00%	0.00%
Mission Laguna Beach	0.43%	0.70%	0.00%	0.00%	0.00%	0.64%	0.00%	0.00%	0.00%	0.00%	0.00%	0.49%
Orange Coast Memorial	0.00%	0.00%	0.00%	0.00%	0.09%	0.00%	0.00%	0.00%	0.00%	0.00%	0.00%	0.00%
Placentia Linda	0.00%	0.00%	0.00%	0.00%	0.00%	0.00%	0.00%	0.00%	0.00%	0.00%	0.00%	0.00%
Saddleback Laguna Hills	0.00%	0.00%	0.00%	0.43%	0.00%	0.00%	0.00%	0.00%	0.00%	0.00%	0.00%	0.00%
Saddleback San Clemente	0.00%	0.00%	0.00%	0.00%	0.00%	0.00%	0.00%	0.00%	0.00%	0.00%	0.00%	0.00%
St Joseph	0.01%	0.00%	0.00%	0.00%	0.00%	0.00%	0.00%	0.00%	0.00%	0.00%	0.00%	0.00%
St Jude	0.00%	0.00%	0.00%	0.00%	0.00%	0.00%	0.00%	0.00%	0.00%	0.00%	0.00%	0.00%
UCI	0.00%	0.00%	0.00%	0.00%	0.00%	0.00%	0.00%	0.00%	0.00%	0.00%	0.00%	0.00%
West Anaheim	0.00%	0.00%	0.00%	0.00%	0.00%	0.00%	0.00%	0.00%	0.38%	0.00%	0.00%	0.00%
Anaheim Global Med Ctr	0.31%	0.00%	0.10%	0.00%	0.00%	0.00%	0.13%	0.12%	0.62%	1.52%	0.78%	0.00%
Orange County Global Med Ctr	0.00%	0.08%	0.47%	0.00%	0.48%	0.24%	0.00%	0.00%	0.47%	0.00%	0.00%	0.00%

Highlighted in Red =Diversion Any Amount

