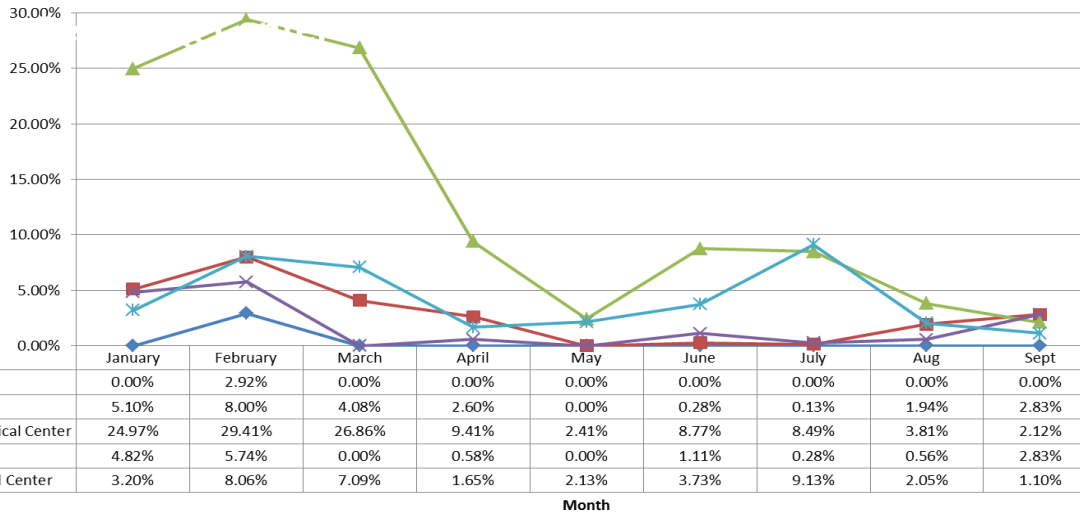




**Orange County
Emergency Medical Services
Diversion Report
January 1 to September 30, 2016**

Emergency Receiving Center Diversion- Percent of Time

North Area- 2016 ERC Diversion



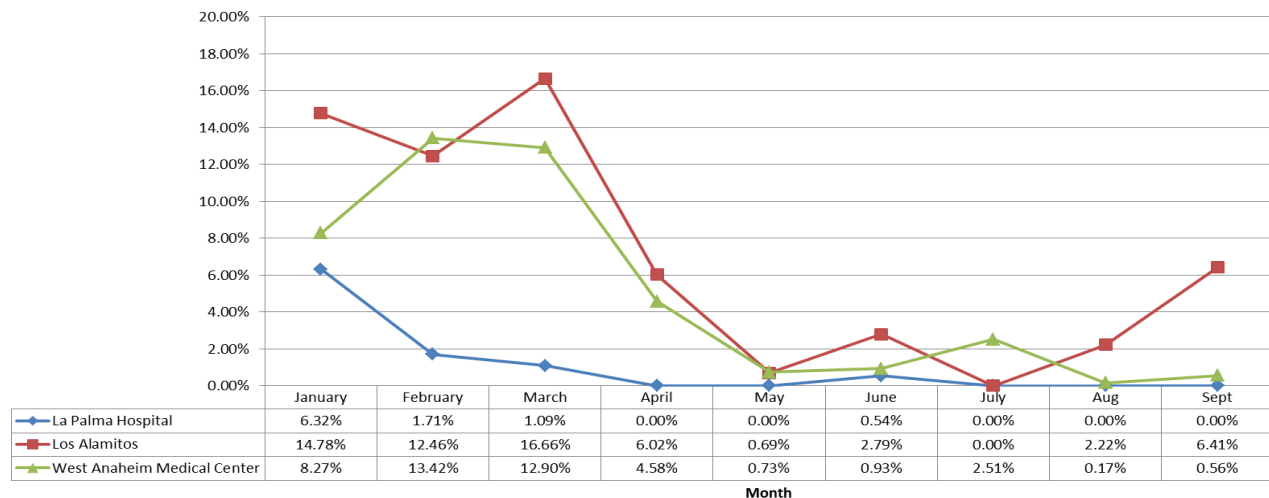
North Area Includes:

- Placentia Linda Hospital
- St. Jude Medical Center
- Anaheim Regional Medical Center
- Kaiser Anaheim
- Anaheim Global Medical Center

West Area Includes:

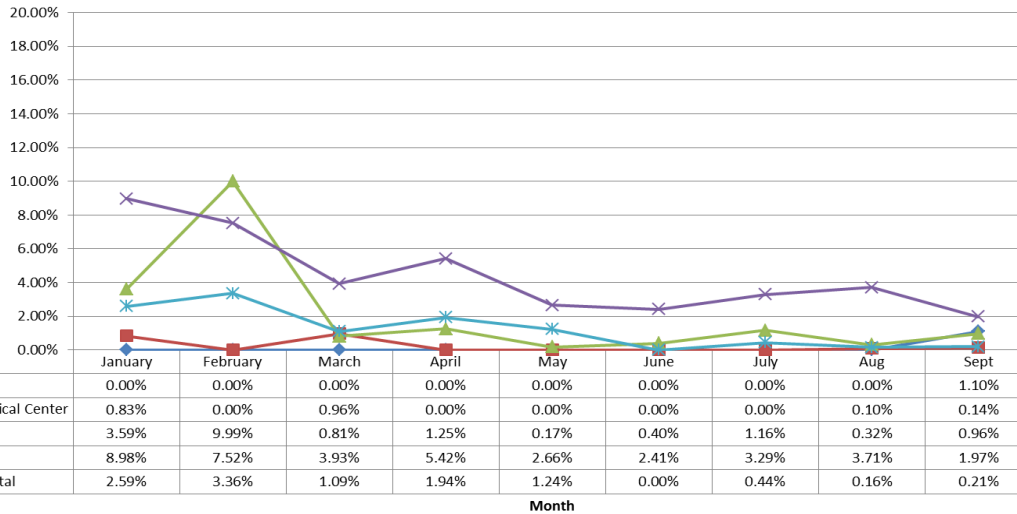
- La Palma Hospital
- Los Alamitos Medical Center
- West Anaheim Medical Center

West Area - 2016 ERC Diversion



Emergency Receiving Center Diversion- Percent of Time

Coastal Area- 2016 ERC Diversion



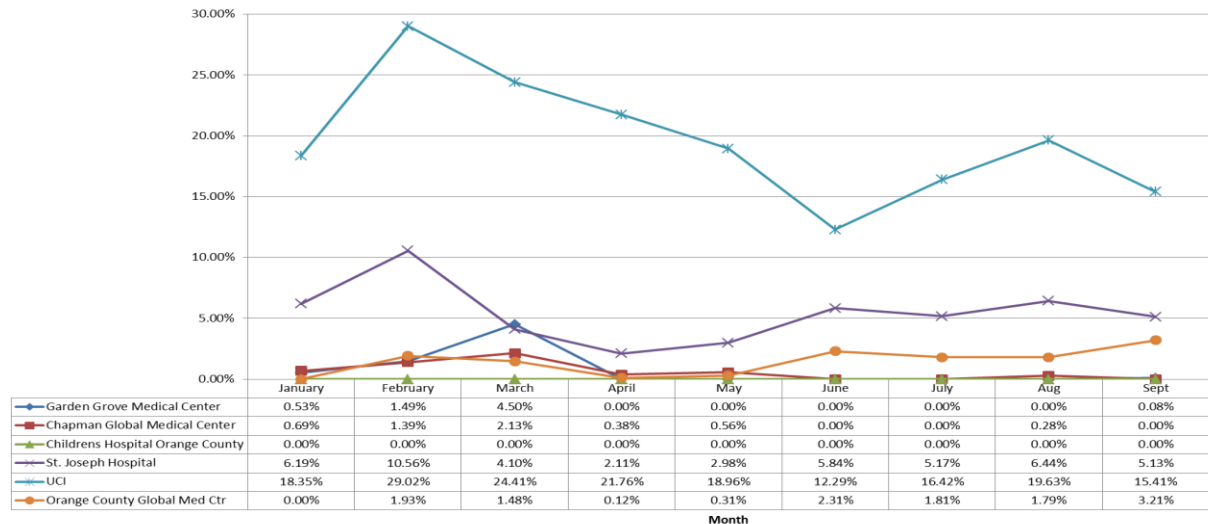
Coastal Area Includes:

- Hoag Hospital Newport Beach
- South Coastal Global Medical Center
- Fountain Valley Hospital
- Orange Coast Memorial Medical Center
- Huntington Beach Hospital

Central Area Includes:

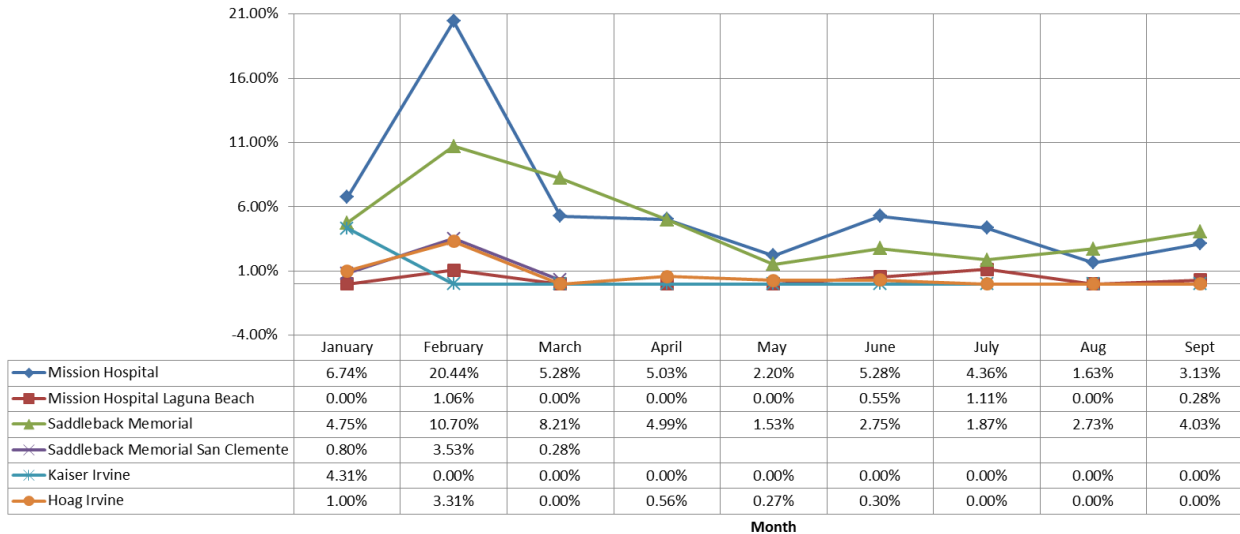
- Garden Grove Medical Center
- Chapman Global Medical Center
- Children's Hospital Orange County
- St. Joseph Hospital
- UCI
- Orange County Global Medical Center

Central Area- 2016 ERC Diversion



Emergency Receiving Center Diversion- Percent of Time

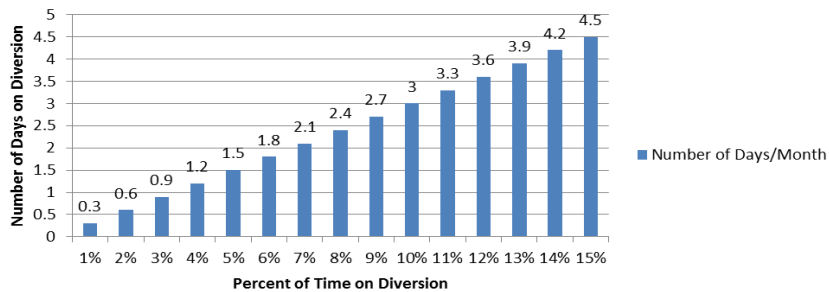
South Area- 2016 ERC Diversion



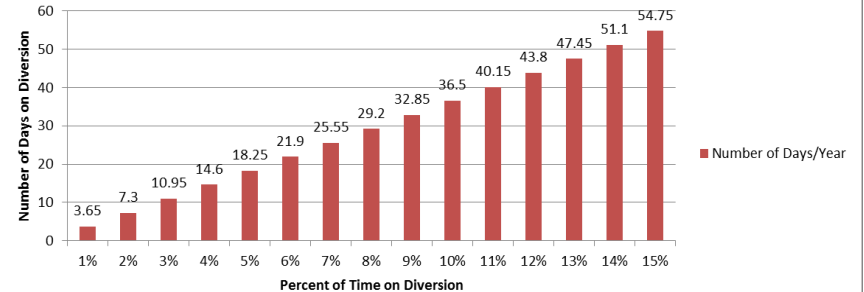
South Area Includes:

- Mission Hospital – Mission Viejo
- Mission Hospital – Laguna Beach
- Saddleback Memorial Medical Center
- Laguna Hills
- Kaiser Hospital – Irvine
- Hoag Hospital - Irvine

Number of Days/Month on Diversion



Number of Days/Year on Diversion



The two charts above demonstrate the monthly and annual impact of diversion represented as a total number of days an ERC would not receive patients given the percent of time of diversion.

Note: Number of days/month based on 30 days in a month



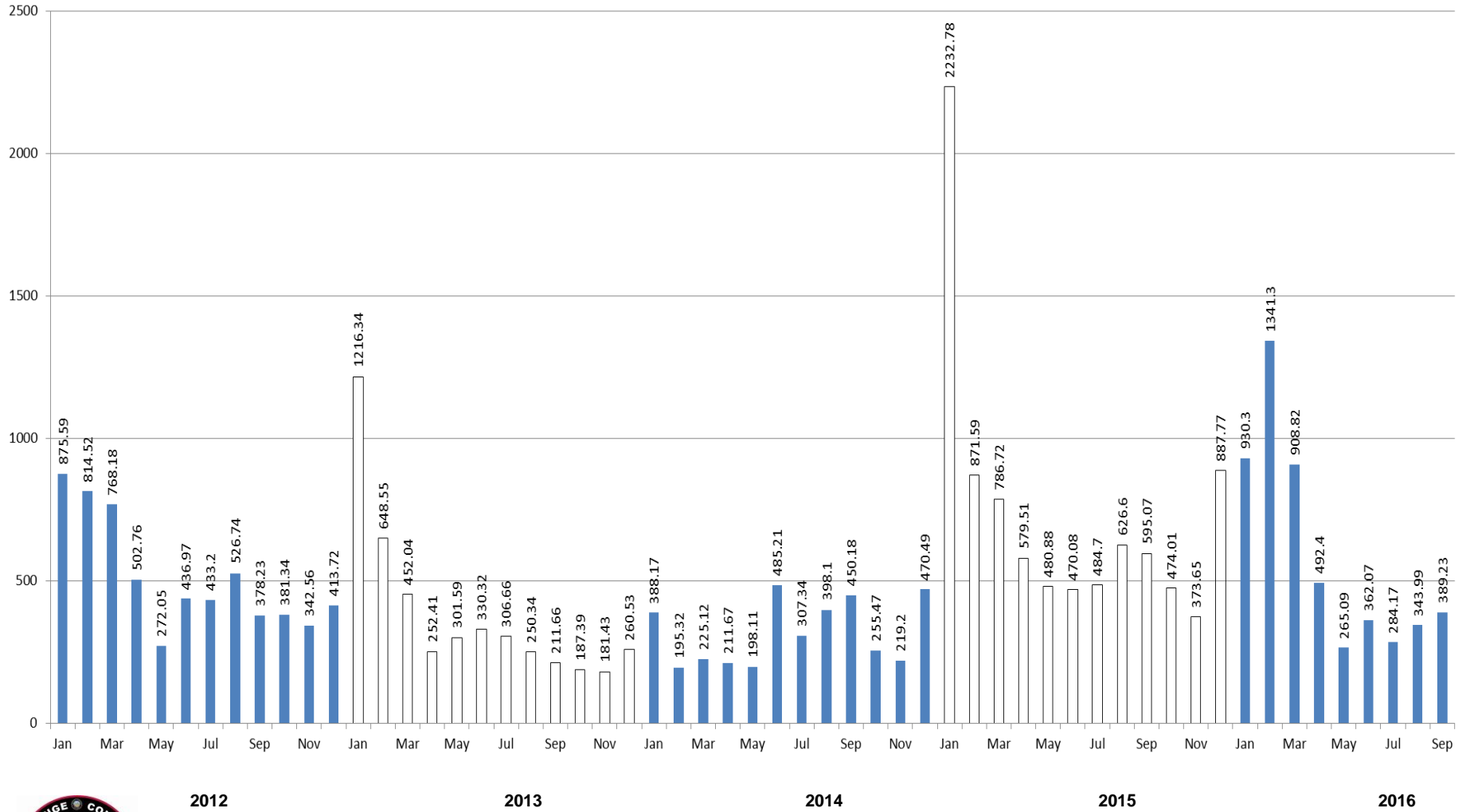
Emergency Receiving Center Diversion- Total Hours

Emergency Receiving Center Diversion Hours 2016												
	Jan	Feb	Mar	Apr	May	Jun	Jul	Aug	Sept	Oct	Nov	Dec
Anaheim Regional Med Ctr	179.78	211.73	193.9	67.72	17.32	63.15	61.12	27.4	15.27			
Chapman Global Med Ctr	3.42	10	15.32	2.77	4	0	0	2	0			
CHOC	0	0	0	0	0	0	0	0	0			
South Coast Global Medical C	5.95	0	6.87	0	0	0	0	0.75	1.02			
Fountain Valley	25.88	71.95	5.82	9	1.2	2.87	5.38	4	6.93			
Garden Grove	0.85	10.7	32.38	0	0	0	0	0	0.58			
Hoag Irvine	7.23	23.85	0	4	1.93	2.18	0	0.07	0			
Hoag Newport	0	0	0	0	0	0	0	0	7.92			
Huntington Beach	18.67	24.2	7.8	13.97	8.9	0	3.15	1.18	1.5			
Kaiser Irvine	31.05	0	0	0	0	0	0	0	0			
Kaiser Anaheim	34.07	41.3	0	4.18	0	8	2	4	20.35			
La Palma	45.53	12.32	7.87	0	0	3.88	0	0	0			
Los Alamitos	106.43	91.72	119.95	43.33	4.97	20.12	0	15.93	46.18			
Mission Hospital	48.53	147.18	38.03	36.2	15.85	38.02	32.42	11.72	22.51			
Mission Laguna Beach	0	7.62	0	0	0	3.97	8	0	2			
Orange Coast Memorial	64.63	54.12	28.3	39.02	19.13	17.33	23.68	26.73	14.15			
Placentia Linda	0	21.05	0	0	0	0	0	0	0			
Saddleback Laguna Hills	34.17	77.03	59.13	35.9	10.98	19.83	13.43	19.67	29.03			
Saddleback San Clemente	5.77	25.43	2									
St Joseph	44.28	76.03	29.5	15.22	21.47	42.03	37.22	46.35	53.43			
St Jude	36.73	57.6	30.1	18.73	0	2	0.93	13.93	20.37			
UCI	152.78	208.92	176.48	156.67	136.48	88.52	118.20	141.37	112.93			
West Anaheim	59.53	96.63	92.84	32.95	5.27	6.72	18.07	1.23	4.03			
Anaheim Global MC	25.02	58.05	51.78	11.87	15.32	26.82	65.7	14.78	7.9			
Orange County Global MC	0	13.87	10.62	0.87	2.27	16.63	13.07	12.88	23.13			
Total	930.3	1341.3	908.82	492.4	265.09	362.07	284.17	343.99	389.23			

** Highlighted in Red=Diversion >6%

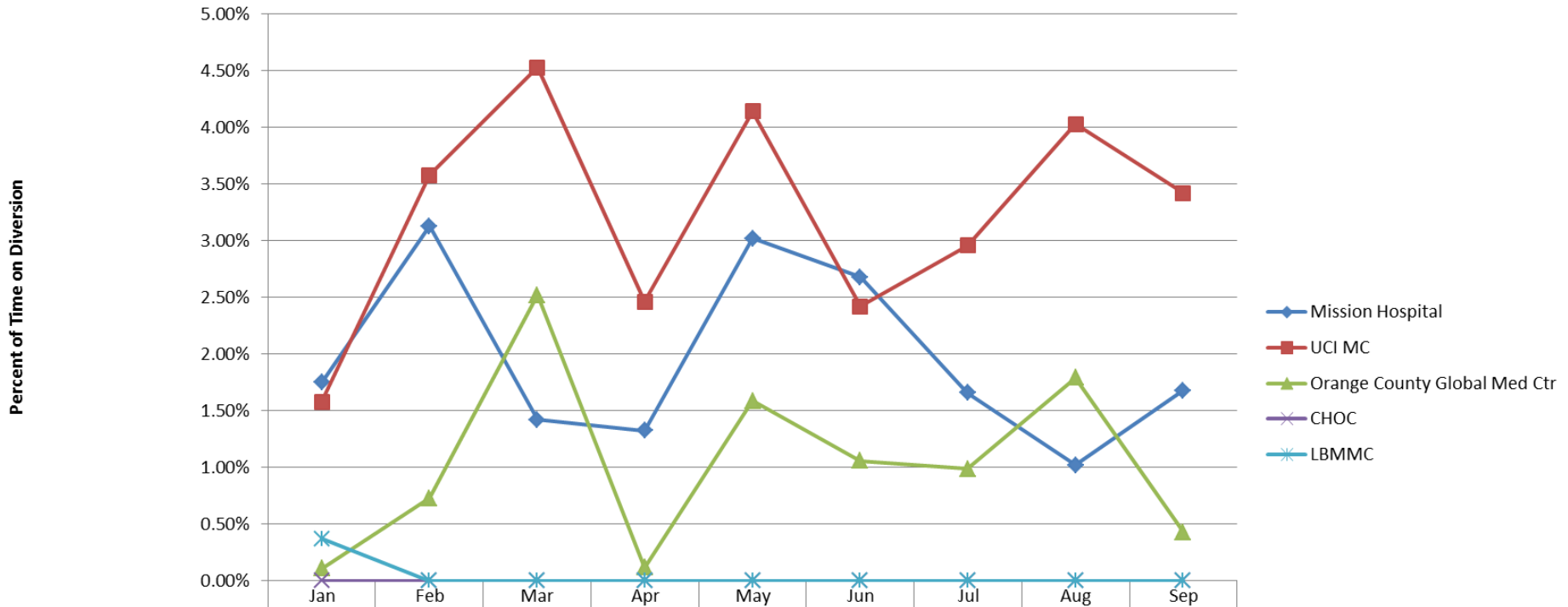


Emergency Receiving Center Diversion- 2012-2016



Trauma Receiving Center Diversion- Percent of Time

Trauma Diversion 2016



	Jan	Feb	Mar	Apr	May	Jun	Jul	Aug	Sep
Mission Hospital	1.75%	3.13%	1.42%	1.32%	3.02%	2.68%	1.66%	1.02%	1.68%
UCI MC	1.58%	3.58%	4.53%	2.46%	4.14%	2.42%	2.96%	4.03%	3.42%
Orange County Global Med Ctr	0.11%	0.73%	2.52%	0.12%	1.59%	1.06%	0.99%	1.79%	0.43%
CHOC	0.00%	0.00%	0.00%	0.00%	0.00%	0.00%	0.00%	0.00%	0.00%
LBMMC	0.37%	0.00%	0.00%	0.00%	0.00%	0.00%	0.00%	0.0%	0.00%



Cardiovascular Receiving Center Diversion- Percent of Time

CVRC 2016												
	Jan	Feb	Mar	Apr	May	Jun	Jul	Aug	Sept	Oct	Nov	Dec
Anaheim Regional	0.00%	0.00%	0.00%	0.00%	0.00%	0.00%	0.00%	0.00%	0.00%			
Fountain Valley	0.00%	0.00%	0.00%	0.00%	0.00%	0.00%	0.00%	0.00%	0.34%			
Hoag Hospital Irvine	0.00%	0.00%	3.02%	0.00%	0.10%	0.00%	0.00%	0.00%	0.00%			
Hoag Hospital Newport Beach	0.00%	0.00%	3.02%	0.00%	0.00%	0.00%	0.00%	0.00%	0.41%			
Los Alamitos	0.77%	0.56%	0.53%	0.00%	0.00%	0.00%	0.00%	0.00%	0.00%			
Orange Coast	2.47%	0.00%	0.38%	0.01%	0.34%	0.00%	0.00%	0.85%	0.62%			
Mission Hospital	0.00%	0.00%	0.00%	0.00%	0.00%	0.00%	0.00%	0.00%	0.00%			
Saddleback Lagunal Hills	0.00%	3.11%	0.00%	0.00%	0.00%	0.00%	0.00%	0.00%	0.00%			
St Joseph	0.00%	0.00%	0.00%	0.00%	0.00%	0.00%	0.89%	0.00%	0.01%			
St. Jude	0.00%	0.00%	0.00%	0.00%	0.00%	0.32%	0.00%	0.00%	0.00%			
UCI	0.00%	0.00%	0.00%	0.00%	0.00%	0.00%	0.00%	0.00%	0.00%			
WAMC	1.56%	1.63%	11.88%	5.60%	0.00%	1.32%	3.71%	15.60%	0.16%			
Anaheim Global Medical Ctr	0.00%	3.33%	0.00%	6.70%	0.00%	0.00%	0.00%	0.00%	0.33%			
Orang County Global Med Ctr	4.12%	0.00%	6.57%	1.22%	0.22%	1.78%	0.78%	4.83%	0.66%			

Highlighted in Red = Diversion Any Amount



Internal Disruption Diversion- Percent of Time

Internal Disruption 2016												
	Jan	Feb	Mar	Apr	May	Jun	Jul	Aug	Sept	Oct	Nov	Dec
Anaheim Regional Med Ctr	0.00%	0.00%	0.00%	0.00%	0.00%	0.00%	0.00%	0.00%	0.00%			
Chapman Global Med Ctr	0.00%	0.00%	0.00%	0.00%	0.00%	0.00%	0.00%	0.00%	0.00%			
CHOC	0.00%	0.00%	0.00%	0.00%	0.00%	0.00%	0.00%	0.00%	0.00%			
South Coast Global Med Ctr	0.22%	0.00%	0.00%	0.00%	0.00%	0.00%	0.00%	0.00%	0.00%			
Fountain Valley	0.00%	0.00%	0.00%	0.00%	0.00%	0.00%	0.49%	0.00%	0.34%			
Garden Grove	0.00%	0.00%	0.87%	0.00%	0.00%	0.00%	0.00%	0.00%	0.00%			
Hoag Irvine	0.00%	0.21%	0.26%	0.00%	0.11%	0.51%	0.00%	0.10%	0.00%			
Hoag Newport	0.00%	0.00%	0.00%	0.00%	0.02%	0.00%	0.00%	0.00%	0.41%			
Huntington Beach	0.00%	0.03%	0.73%	0.00%	0.00%	0.00%	0.00%	0.00%	0.00%			
Kaiser Irvine	0.00%	0.00%	0.00%	0.00%	0.00%	0.00%	0.00%	0.00%	0.00%			
Kaiser Anaheim	0.00%	0.00%	0.00%	0.04%	0.00%	0.00%	0.00%	0.84%	0.00%			
La Palma	0.00%	0.00%	0.80%	0.00%	0.00%	0.00%	0.00%	0.00%	0.00%			
Los Alamitos	0.00%	0.00%	0.06%	0.00%	0.00%	0.00%	0.00%	0.00%	0.00%			
Mission Hospital	0.00%	0.00%	0.00%	0.00%	0.00%	0.00%	0.00%	0.54%	0.00%			
Mission Laguna Beach	0.00%	0.20%	0.00%	0.00%	0.00%	0.00%	0.00%	0.00%	0.00%			
Orange Coast Memorial	0.00%	0.00%	0.12%	0.14%	0.00%	0.00%	1.20%	0.10%	0.00%			
Placentia Linda	0.00%	0.00%	0.00%	0.00%	0.00%	0.00%	0.00%	0.00%	0.00%			
Saddleback Laguna Hills	0.00%	0.00%	0.00%	0.00%	0.00%	0.00%	0.00%	0.00%	0.00%			
Saddleback San Clemente	0.00%	0.00%	0.00%	0.00%	0.00%	0.00%	0.00%	0.00%	0.00%			
St Joseph	0.00%	0.00%	0.00%	0.00%	0.00%	0.00%	0.00%	0.00%	0.01%			
St Jude	0.00%	0.00%	0.00%	0.00%	0.00%	0.00%	0.00%	0.00%	0.00%			
UCI	0.00%	0.00%	0.00%	0.16%	0.00%	0.00%	0.00%	1.24%	0.00%			
West Anaheim	0.00%	0.00%	1.74%	0.06%	0.00%	0.00%	0.00%	0.00%	0.00%			
Anaheim Global Med Ctr	0.79%	0.00%	0.00%	0.00%	0.00%	0.00%	0.00%	0.00%	0.26%			
Orange County Global Med Ct	0.00%	0.12%	0.07%	0.00%	0.00%	0.00%	1.13%	0.00%	0.00%			

Highlighted in Red =Diversion Any Amount



CT Diversion Report- Percent of Time

CT Diversion 2016												
	Jan	Feb	Mar	Apr	May	Jun	Jul	Aug	Sept	Oct	Nov	Dec
Anaheim Regional Med Ctr	0.52%	0.60%	16.19%	0.70%	1.22%	4.94%	1.51%	2.67%	1.99%			
Chapman Global Med Ctr	0.99%	1.29%	0.00%	0.00%	0.00%	0.14%	0.00%	0.00%	1.83%			
CHOC	0.00%	0.00%	0.00%	0.00%	0.00%	0.00%	0.00%	0.00%	0.00%			
South Coast Global Med Ctr	0.00%	0.19%	3.32%	0.80%	0.32%	0.00%	0.00%	0.32%	0.00%			
Fountain Valley	0.00%	0.00%	0.00%	0.00%	0.00%	0.00%	0.00%	0.00%	0.34%			
Garden Grove	1.96%	1.95%	5.13%	1.26%	0.00%	0.00%	0.00%	0.00%	0.00%			
Hoag Irvine	0.00%	0.00%	0.03%	0.00%	0.00%	0.00%	0.00%	0.00%	0.00%			
Hoag Newport	0.00%	0.00%	0.00%	0.00%	0.00%	0.00%	0.00%	0.00%	0.41%			
Huntington Beach	0.71%	0.00%	6.91%	5.94%	0.73%	0.00%	0.00%	0.10%	0.00%			
Kaiser Irvine	0.00%	0.00%	0.00%	0.00%	0.00%	0.00%	0.00%	0.00%	0.00%			
Kaiser Anaheim	0.69%	0.16%	0.26%	0.13%	0.13%	0.12%	0.43%	1.00%	0.18%			
La Palma	0.00%	0.06%	4.29%	0.02%	0.00%	0.00%	0.00%	1.05%	0.84%			
Los Alamitos	0.10%	0.00%	0.00%	0.00%	0.00%	0.21%	0.00%	0.00%	0.00%			
Mission Hospital	0.00%	0.00%	0.00%	0.00%	0.00%	0.00%	0.00%	0.00%	0.00%			
Mission Laguna Beach	0.45%	0.53%	0.13%	0.20%	0.06%	0.00%	0.42%	0.70%	0.79%			
Orange Coast Memorial	0.00%	0.33%	0.00%	0.00%	0.00%	0.00%	0.15%	0.10%	0.00%			
Placentia Linda	0.00%	0.00%	0.00%	0.00%	0.00%	0.00%	0.00%	0.00%	0.00%			
Saddleback Laguna Hills	0.00%	0.00%	0.00%	0.00%	0.00%	0.00%	0.00%	0.00%	0.00%			
Saddleback San Clemente	0.00%	0.00%	0.00%	0.00%	0.00%	0.00%	0.00%	0.00%	0.00%			
St Joseph	0.00%	0.00%	0.00%	0.00%	0.00%	0.00%	0.00%	0.00%	0.01%			
St Jude	0.00%	0.00%	0.00%	0.00%	0.00%	0.00%	0.00%	0.00%	0.00%			
UCI	0.00%	0.00%	0.00%	0.00%	0.00%	0.00%	0.00%	0.00%	0.00%			
West Anaheim	0.00%	0.96%	3.63%	0.12%	0.00%	0.00%	0.00%	0.00%	0.00%			
Anaheim Global Med Ctr	0.00%	0.02%	0.37%	0.00%	0.00%	0.58%	0.00%	0.26%	0.34%			
Orange County Global Med Ct	0.15%	0.00%	0.00%	0.00%	0.00%	0.17%	0.00%	0.00%	0.00%			

Highlighted in Red =Diversion Any Amount

