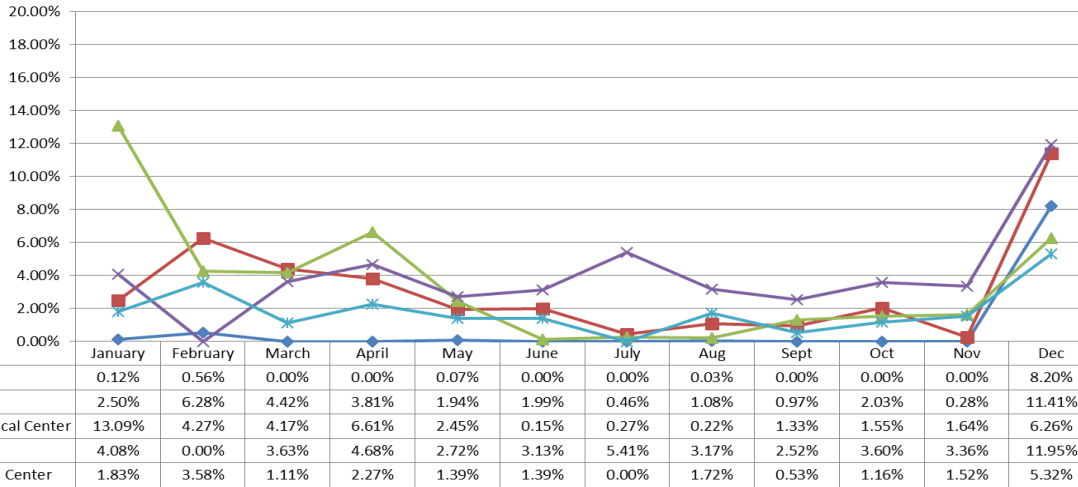




**Orange County
Emergency Medical Services
Diversion Report
January 1 to December 31, 2017**

Emergency Receiving Center Diversion- Percent of Time

North Area- 2017 ERC Diversion



North Area Includes:

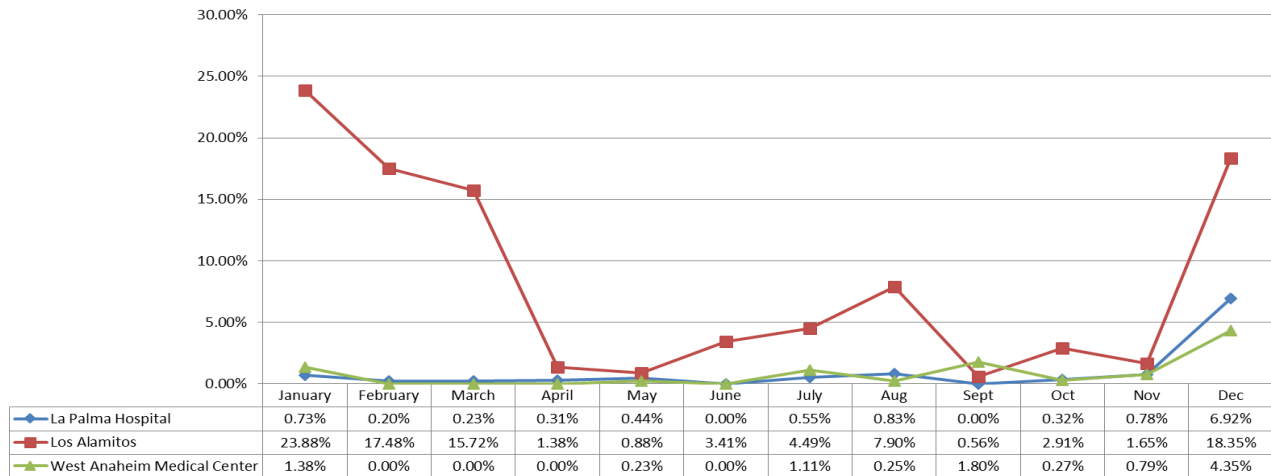
- Placentia Linda Hospital
- St. Jude Medical Center
- Anaheim Regional Medical Center
- Kaiser Anaheim
- Anaheim Global Medical Center

Month

West Area Includes:

- La Palma Hospital
- Los Alamitos Medical Center
- West Anaheim Medical Center

West Area - 2017 ERC Diversion

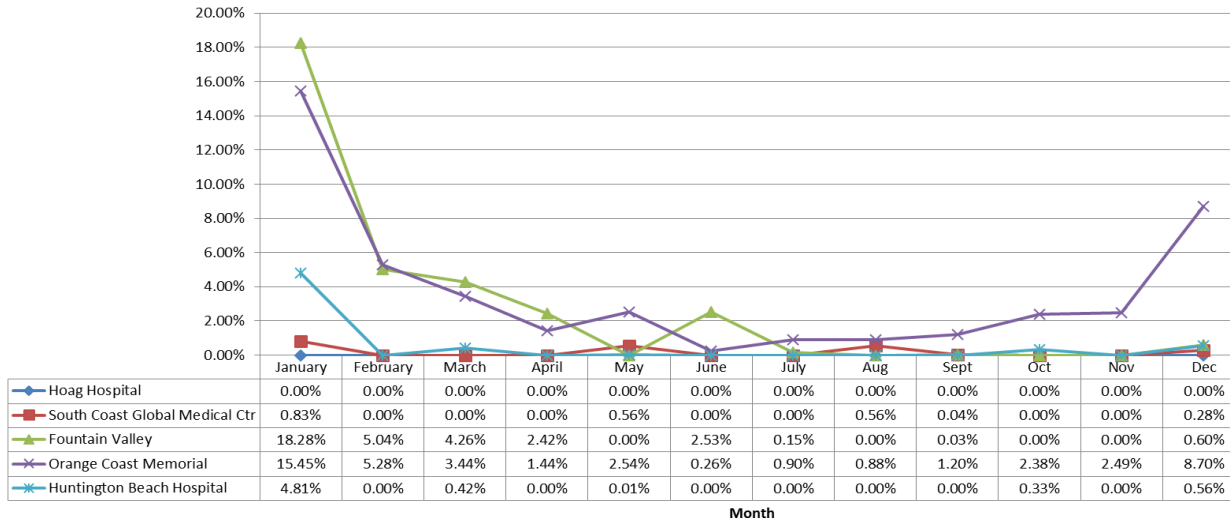


Month



Emergency Receiving Center Diversion- Percent of Time

Coastal Area- 2017 ERC Diversion



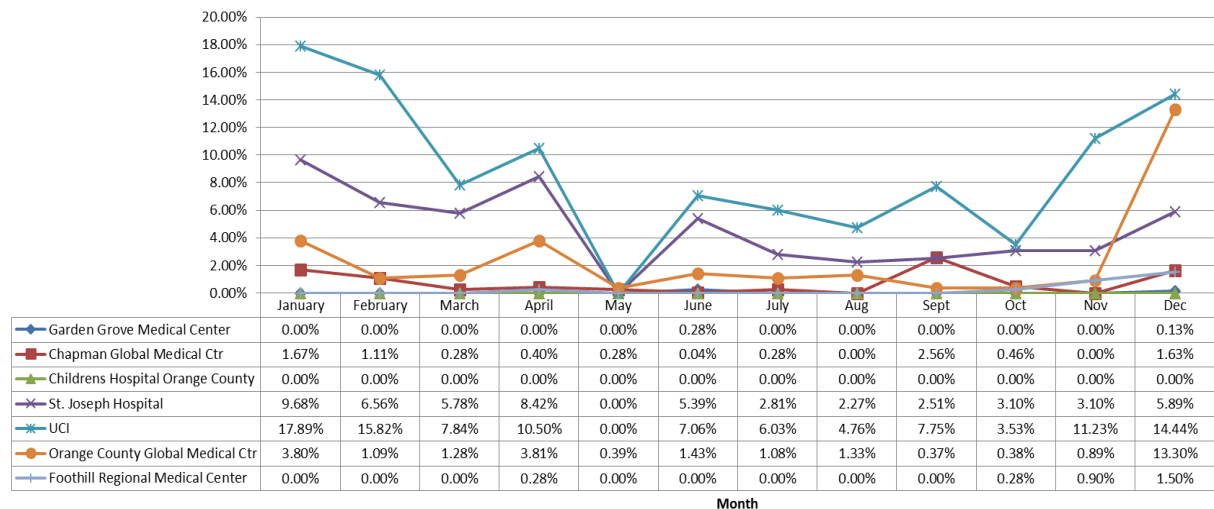
Coastal Area Includes:

- Hoag Hospital Newport Beach
- South Coastal Global Medical Center
- Fountain Valley Hospital
- Orange Coast Memorial Medical Center
- Huntington Beach Hospital

Central Area Includes:

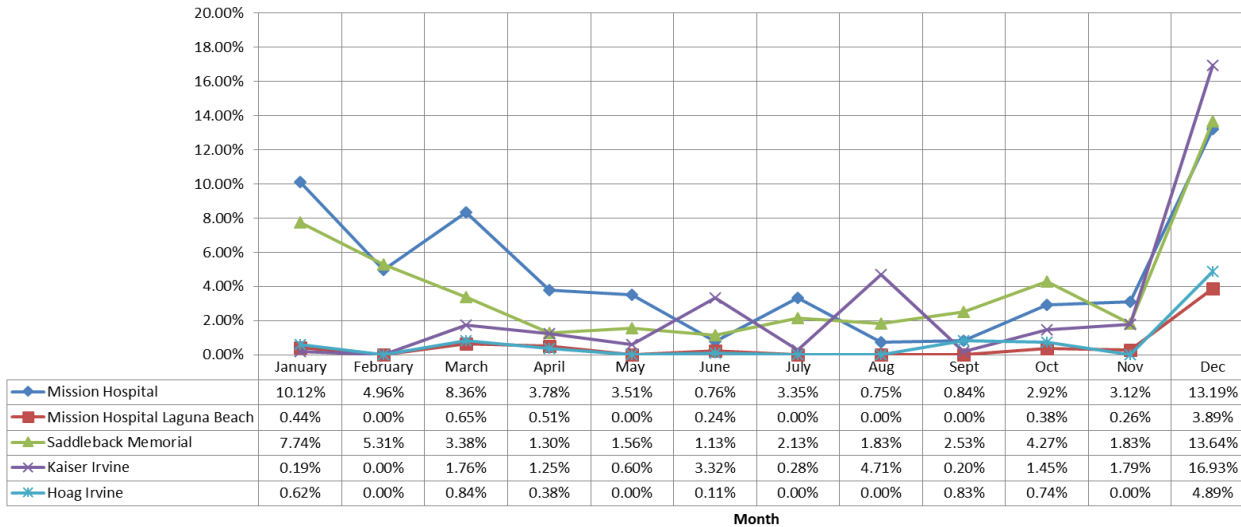
- Garden Grove Medical Center
- Chapman Global Medical Center
- Children's Hospital Orange County
- St. Joseph Hospital
- UCI
- Orange County Global Medical Center
- Foothill Regional Medical Center

Central Area- 2017 ERC Diversion



Emergency Receiving Center Diversion- Percent of Time

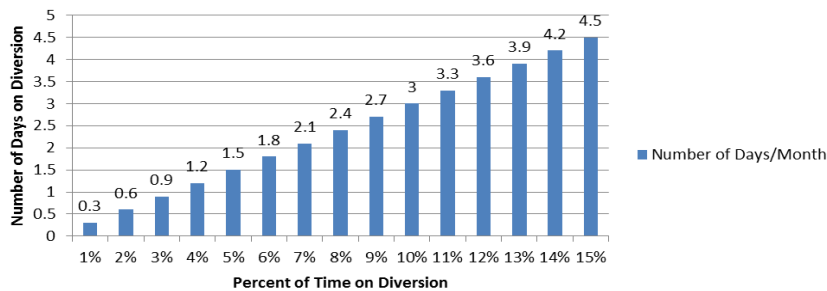
South Area- 2017 ERC Diversion



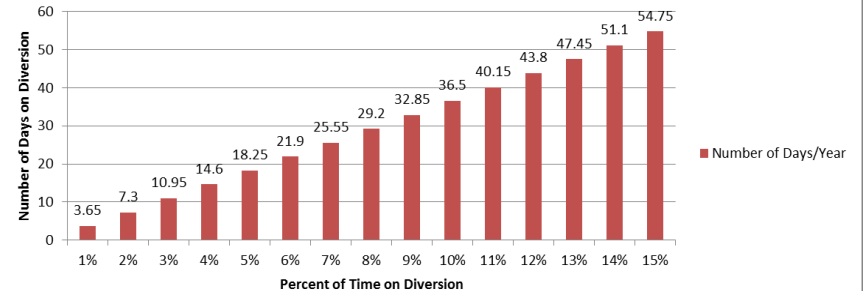
South Area Includes:

- Mission Hospital – Mission Viejo
- Mission Hospital – Laguna Beach
- Saddleback Memorial Medical Center
- Laguna Hills
- Kaiser Hospital – Irvine
- Hoag Hospital - Irvine

Number of Days/Month on Diversion



Number of Days/Year on Diversion



The two charts above demonstrate the monthly and annual impact of diversion represented as a total number of days an ERC would not receive patients given the percent of time of diversion.

Note: Number of days/month based on 30 days in a month

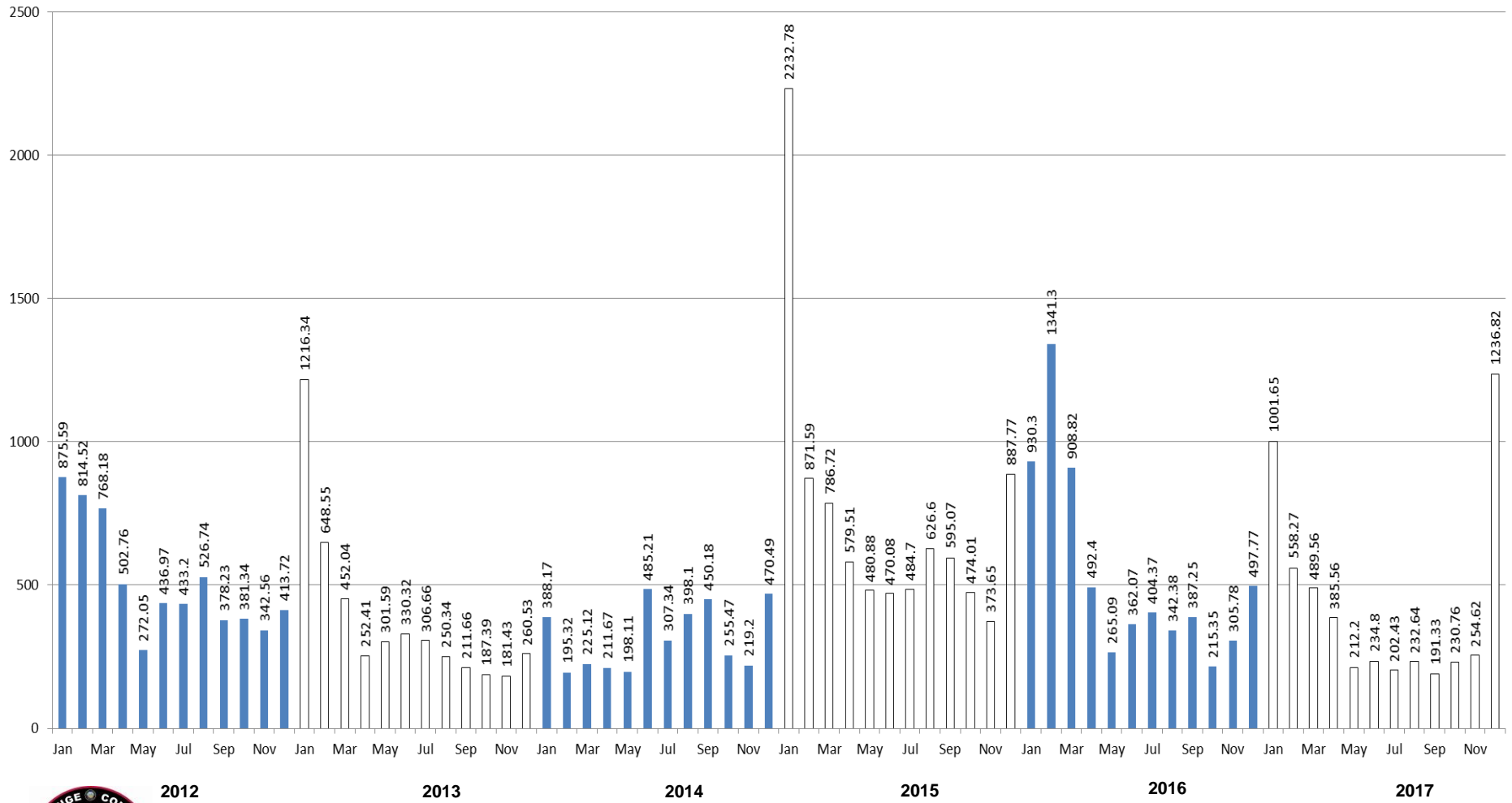
Emergency Receiving Center Diversion- Total Hours

Emergency Receiving Center Diversion Hours 2017												
	Jan	Feb	Mar	Apr	May	Jun	Jul	Aug	Sept	Oct	Nov	Dec
Anaheim Global Medical Ctr	13.17	25.78	8	16.37	10	10	8	12.4	3.8	8.35	10.93	38.32
Anaheim Regional Med Ctr	94.27	30.73	30	47.58	17.63	1.1	1.97	1.62	9.55	11.18	11.8	45.07
Chapman Global Medical Ctr	12	8	2	2.88	2.03	0.28	0	4	18.5	3.32	0	11.77
CHOC	0	0	0	0	0	0	0	0	0	0	0	0
Foothill Regional Medical Ctr	0	0	0	2	0	0	0	0	0	2	0.62	10.82
Fountain Valley	131.58	36.28	30.65	17.42	34.17	18.23	1.07	0	0.23	0	0	4.32
Garden Grove Hospital	0	0	0	0	0	2	0	0	0	0	0	0.95
Hoag Hospital Irvine	4.47	0	6.05	2.73	0	0.78	0	0	6	5.35	0	35.22
Hoag Newport	0	0	0	0	0	0	0	0	0	0	0	0
Huntington Beach	34.6	0	3.02	0	0.12	0	0	0	0	2.37	4	0
Kaiser Anaheim	29.38	0	26.12	33.68	19.55	22.52	38.98	22.82	18.13	25.95	24.17	86.05
Kaiser Irvine	1.4	0	12.65	9	4.35	23.92	2	33.93	1.42	10.45	12.92	121.87
La Palma Intercommunity	5.28	1.43	1.63	2.27	3.2	0	3.93	6	0	2.27	5.6	49.85
Los Alamitos	171.93	125.88	113.18	9.92	6.32	24.55	32.35	56.88	4	20.95	11.88	132.15
Mission Hospital Laguna	3.18	0	4.68	3.67	0	1.71	0	0	0	2.7	1.87	28
Mission Hospital Mission	72.87	35.68	60.2	27.18	25.25	5.48	24.13	5.42	6.07	21.02	22.48	94.93
Orange Coast Memorial	111.23	38.05	27.8	10.37	18.32	1.85	6.47	6.33	8.65	17.13	17.95	62.67
Orange County Global Med	27.35	7.86	9.23	27.45	2.8	10.27	7.75	9.55	2.65	2.72	6.38	95.73
Placentia Linda Hospital	0.85	4	0	0	0.5	0	0	0.23	0	0	0	59.02
Saddleback Memorial	55.73	38.27	24.37	9.33	11.23	8.12	20.22	13.18	18.23	30.73	13.17	98.2
South Coast Global	6	0	0	0	4	0	2	0	0.28	0	0	2
St Joseph	69.7	47.2	41.65	60.63	37.13	38.83	0	16.37	18.05	22.32	22.25	42.4
St. Jude Medical Ctr	17.95	45.23	31.85	27.45	13.97	14.33	3.28	7.8	6.97	14.63	2	82.15
UCI	128.78	113.88	56.48	75.63	0	50.83	43.4	34.28	55.82	25.4	80.88	104
West Anaheim Medical Ctr	9.93	0	0	0	1.63	0	6.88	1.83	12.98	1.92	5.72	31.33
Total	1001.65	558.27	489.56	385.56	212.2	234.8	202.43	232.64	191.33	230.76	254.62	1236.82

** Highlighted in Red=Diversion >6%

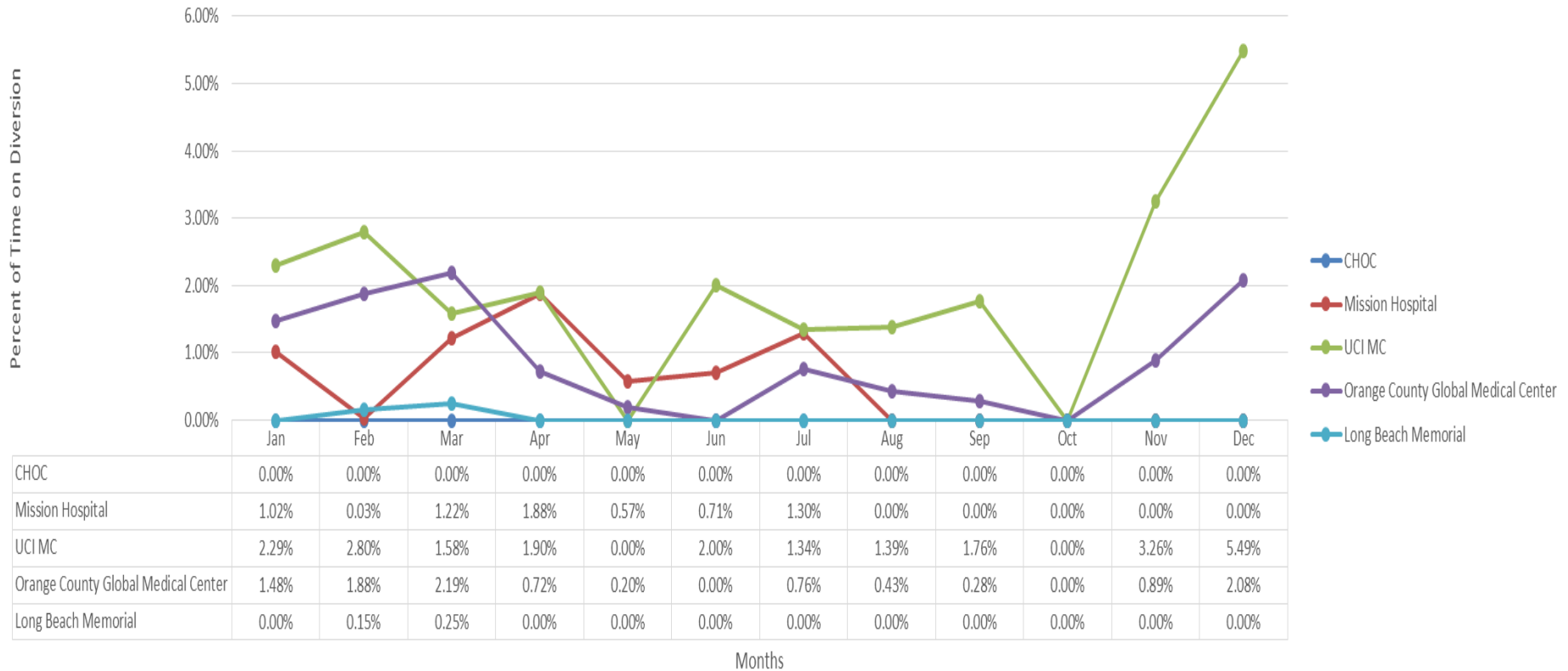


Emergency Receiving Center Diversion- 2012-2017



Trauma Receiving Center Diversion- Percent of Time

Trauma Diversion 2017



Cardiovascular Receiving Center Diversion- Percent of Time

CVRC 2017

	Jan	Feb	Mar	Apr	May	Jun	Jul	Aug	Sept	Oct	Nov	Dec
Anaheim Global Medical Ctr	0.31%	0.40%	0.75%	8.37%	0.00%	1.04%	0.0%	0.0%	3.7%	6.7%	1.4%	16.1%
Anaheim Regional Medical Ctr	1.41%	0.31%	0.00%	1.86%	0.00%	0.00%	0.0%	0.0%	0.5%	0.0%	0.0%	0.3%
Fountain Valley	0.44%	0.00%	0.00%	0.00%	0.00%	3.63%	0.0%	0.0%	0.0%	0.0%	0.0%	0.0%
Hoag Hospital Irvine	0.00%	0.00%	0.00%	0.44%	0.00%	0.11%	0.0%	0.0%	0.6%	2.6%	0.6%	1.4%
Hoag Hospital Newport	0.00%	0.00%	0.00%	0.00%	0.00%	0.00%	0.0%	0.0%	0.0%	0.0%	0.0%	0.0%
Los Alamitos	0.00%	0.00%	0.00%	0.24%	0.00%	0.00%	0.0%	1.0%	0.0%	0.1%	0.3%	2.3%
Orange Coast Memorial Med	4.16%	4.23%	0.00%	0.00%	2.04%	0.00%	0.0%	3.2%	0.6%	0.4%	0.0%	0.0%
Orange County Global Med	7.27%	3.30%	7.21%	9.68%	0.42%	3.07%	3.3%	9.8%	0.6%	1.6%	1.9%	8.7%
Mission Hospital	0.23%	0.00%	0.00%	0.61%	0.00%	0.00%	0.0%	0.0%	0.0%	0.1%	0.0%	0.0%
Saddleback Memorial	0.00%	0.00%	0.00%	0.00%	0.00%	0.00%	0.0%	0.0%	0.0%	0.0%	0.0%	0.0%
St Joseph	0.00%	0.00%	0.00%	0.00%	0.00%	0.00%	0.2%	0.0%	0.0%	0.0%	0.0%	0.0%
St Jude	0.00%	0.00%	0.00%	0.00%	0.00%	0.00%	0.0%	0.0%	0.0%	0.0%	0.0%	0.0%
UCI	0.25%	0.00%	0.38%	0.00%	0.00%	0.00%	0.0%	0.0%	0.0%	0.0%	0.0%	0.0%
West Anaheim Medical Ctr	0.00%	2.31%	0.86%	0.70%	1.93%	1.21%	0.5%	1.1%	1.1%	0.5%	1.0%	28.3%

Highlighted in Red = Diversion Any Amount



Internal Disruption Diversion- Percent of Time

Internal Disruption 2017												
	Jan	Feb	Mar	Apr	May	Jun	Jul	Aug	Sept	Oct	Nov	Dec
Anaheim Global Medical Ctr	0.00%	0.00%	0.00%	1.70%	0.00%	0.00%	0.00%	0.00%	0.25%	0.00%	0.83%	0.00%
Anaheim Regional Med Ctr	0.00%	0.00%	0.00%	0.00%	0.00%	0.00%	0.00%	0.00%	0.00%	0.00%	0.00%	0.00%
Chapman Global Medical Ctr	0.00%	0.00%	0.00%	0.00%	0.60%	0.00%	0.00%	0.00%	0.00%	0.07%	0.00%	0.00%
CHOC	0.00%	0.00%	0.00%	0.00%	0.00%	0.00%	0.00%	0.00%	0.00%	0.00%	0.00%	0.00%
Foothill Regional Medical Ctr	0.00%	0.00%	0.00%	0.00%	0.00%	0.00%	0.00%	0.00%	0.00%	1.20%	0.00%	0.00%
Fountain Valley	0.44%	0.00%	0.00%	0.00%	0.00%	3.63%	0.00%	0.00%	0.00%	0.00%	0.00%	0.00%
Garden Grove Hospital	0.00%	0.00%	0.00%	0.00%	0.00%	0.00%	0.00%	0.00%	0.00%	0.00%	0.00%	0.00%
Hoag Hospital Irvine	0.00%	0.00%	0.00%	0.00%	0.00%	0.11%	0.00%	0.00%	0.58%	2.60%	0.00%	0.00%
Hoag Newport	0.00%	0.00%	0.00%	0.00%	0.00%	0.00%	0.00%	0.00%	0.00%	0.00%	0.00%	0.00%
Huntington Beach	0.03%	0.00%	0.00%	0.00%	0.00%	0.00%	0.00%	0.00%	0.00%	0.00%	0.00%	0.00%
Kaiser Anaheim	0.00%	0.00%	0.00%	0.00%	0.00%	0.00%	0.00%	0.00%	0.00%	0.00%	0.00%	0.00%
Kaiser Irvine	0.00%	0.00%	0.22%	0.00%	0.00%	0.65%	0.00%	0.00%	0.00%	0.00%	0.00%	0.00%
La Palma Intercommunity	0.00%	0.00%	0.00%	0.00%	0.00%	0.00%	0.00%	0.00%	0.00%	0.00%	0.00%	0.00%
Los Alamitos	0.00%	0.00%	0.00%	0.00%	0.00%	0.00%	0.00%	0.00%	0.00%	0.00%	0.00%	0.00%
Mission Hospital Laguna	0.04%	0.00%	0.00%	0.00%	0.00%	0.00%	0.00%	0.00%	0.00%	0.00%	0.00%	0.00%
Mission Hospital Mission	0.00%	0.00%	0.00%	0.00%	0.00%	0.00%	0.00%	0.00%	0.00%	0.12%	0.00%	0.00%
Orange Coast Memorial	0.19%	0.00%	0.00%	0.00%	0.00%	0.00%	0.00%	0.21%	0.17%	0.00%	0.00%	0.00%
Orange County Global Med	0.00%	0.00%	0.00%	0.00%	0.00%	0.00%	0.00%	0.00%	0.00%	0.00%	0.00%	0.00%
Placentia Linda Hospital	0.11%	2.40%	0.00%	0.00%	0.07%	0.00%	0.00%	0.03%	0.00%	0.00%	0.00%	0.72%
Saddleback Memorial	0.00%	0.00%	0.00%	0.00%	0.00%	0.00%	0.00%	0.00%	0.00%	0.00%	0.00%	0.00%
South Coast Global	0.00%	0.00%	0.00%	0.00%	1.01%	0.00%	0.00%	0.00%	0.00%	0.00%	0.00%	0.44%
St Joseph	0.00%	0.00%	0.00%	0.00%	0.00%	0.00%	0.19%	0.02%	0.00%	0.00%	0.00%	0.00%
St. Jude Medical Ctr	0.00%	0.00%	0.00%	0.00%	0.00%	0.00%	0.00%	0.00%	0.00%	0.00%	0.00%	0.00%
UCI	0.25%	0.00%	0.38%	0.00%	0.00%	0.00%	0.00%	0.00%	0.00%	0.00%	0.00%	0.00%
West Anaheim Medical Ctr	0.00%	0.00%	0.00%	0.00%	0.00%	0.00%	0.00%	0.00%	0.17%	0.00%	0.00%	0.00%

Highlighted in Red =Diversion Any Amount



CT Diversion Report- Percent of Time

CT Diversion 2017

	Jan	Feb	Mar	Apr	May	Jun	Jul	Aug	Sept	Oct	Nov	Dec
Anaheim Global Medical Ctr	3.95%	3.92%	0.00%	1.70%	0.00%	0.54%	2.85%	0.00%	6.81%	0.13%	0.83%	0.39%
Anaheim Regional Med Ctr	0.26%	0.70%	0.58%	0.00%	0.10%	0.53%	0.56%	0.25%	7.14%	0.93%	1.72%	0.54%
Chapman Global Medical Ctr	0.00%	0.00%	0.00%	0.00%	0.60%	0.00%	0.00%	0.00%	0.00%	0.07%	0.00%	0.00%
CHOC	0.00%	0.00%	0.00%	0.00%	0.00%	0.00%	0.00%	0.00%	0.00%	0.00%	0.00%	0.00%
Foothill Regional Medical Ctr	0.00%	0.00%	0.00%	0.00%	0.00%	0.00%	0.00%	0.00%	0.00%	1.84%	0.34%	0.00%
Fountain Valley	0.44%	0.00%	1.03%	0.05%	0.00%	3.63%	0.00%	0.00%	0.00%	0.00%	0.00%	0.00%
Garden Grove Hospital	1.55%	0.39%	0.00%	2.04%	1.36%	0.18%	4.40%	5.88%	0.00%	0.00%	0.45%	0.19%
Hoag Hospital Irvine	0.66%	1.21%	0.00%	0.40%	1.17%	6.86%	0.55%	0.67%	0.58%	5.31%	0.00%	0.00%
Hoag Newport	0.00%	0.00%	0.00%	0.00%	0.02%	0.00%	0.00%	0.00%	0.00%	0.00%	0.00%	0.00%
Huntington Beach	0.03%	1.35%	0.00%	5.23%	0.54%	0.67%	1.49%	0.23%	15.43%	0.30%	0.24%	15.89%
Kaiser Anaheim	0.36%	0.22%	0.89%	0.46%	0.15%	0.34%	0.17%	0.00%	0.35%	0.21%	0.00%	0.25%
Kaiser Irvine	0.00%	0.00%	0.22%	0.00%	0.00%	0.65%	0.00%	0.00%	0.00%	0.00%	0.00%	0.00%
La Palma Intercommunity	0.00%	0.48%	0.00%	0.00%	0.00%	0.00%	0.00%	0.00%	0.00%	0.00%	0.00%	0.00%
Los Alamitos	0.00%	0.00%	0.00%	0.00%	0.00%	0.00%	0.00%	4.79%	0.00%	0.00%	0.00%	0.00%
Mission Hospital Laguna	0.34%	0.16%	4.14%	0.26%	0.25%	9.25%	3.80%	0.51%	0.73%	0.00%	0.21%	0.00%
Mission Hospital Mission	0.00%	0.00%	0.00%	0.00%	0.00%	0.00%	0.00%	0.00%	0.00%	0.12%	0.00%	0.00%
Orange Coast Memorial	0.19%	0.00%	0.00%	0.00%	0.00%	0.00%	0.00%	0.21%	0.26%	0.00%	0.00%	0.00%
Orange County Global Med	0.00%	0.00%	0.00%	0.00%	0.00%	0.00%	0.00%	0.21%	0.00%	0.00%	0.69%	0.00%
Placentia Linda Hospital	0.11%	2.40%	0.00%	0.00%	0.07%	0.00%	0.00%	0.03%	0.00%	0.00%	0.00%	0.72%
Saddleback Memorial	0.00%	0.00%	0.00%	0.00%	0.00%	0.00%	0.00%	0.00%	0.00%	0.00%	0.00%	0.00%
South Coast Global	4.09%	0.00%	0.00%	15.27%	19.94%	1.09%	0.00%	1.19%	0.46%	0.78%	2.63%	2.10%
St Joseph	0.00%	0.00%	0.00%	0.00%	0.00%	0.00%	0.19%	0.02%	0.00%	0.00%	0.00%	0.00%
St. Jude Medical Ctr	0.00%	0.00%	0.00%	0.00%	0.00%	0.00%	0.00%	0.00%	0.00%	0.00%	0.00%	0.00%
UCI	0.25%	0.00%	0.38%	0.00%	0.00%	0.00%	0.00%	0.00%	0.00%	0.00%	0.00%	0.00%
West Anaheim Medical Ctr	0.00%	0.00%	0.02%	0.39%	0.00%	0.00%	0.09%	0.00%	0.17%	0.00%	0.00%	0.00%

Highlighted in Red =Diversion Any Amount

