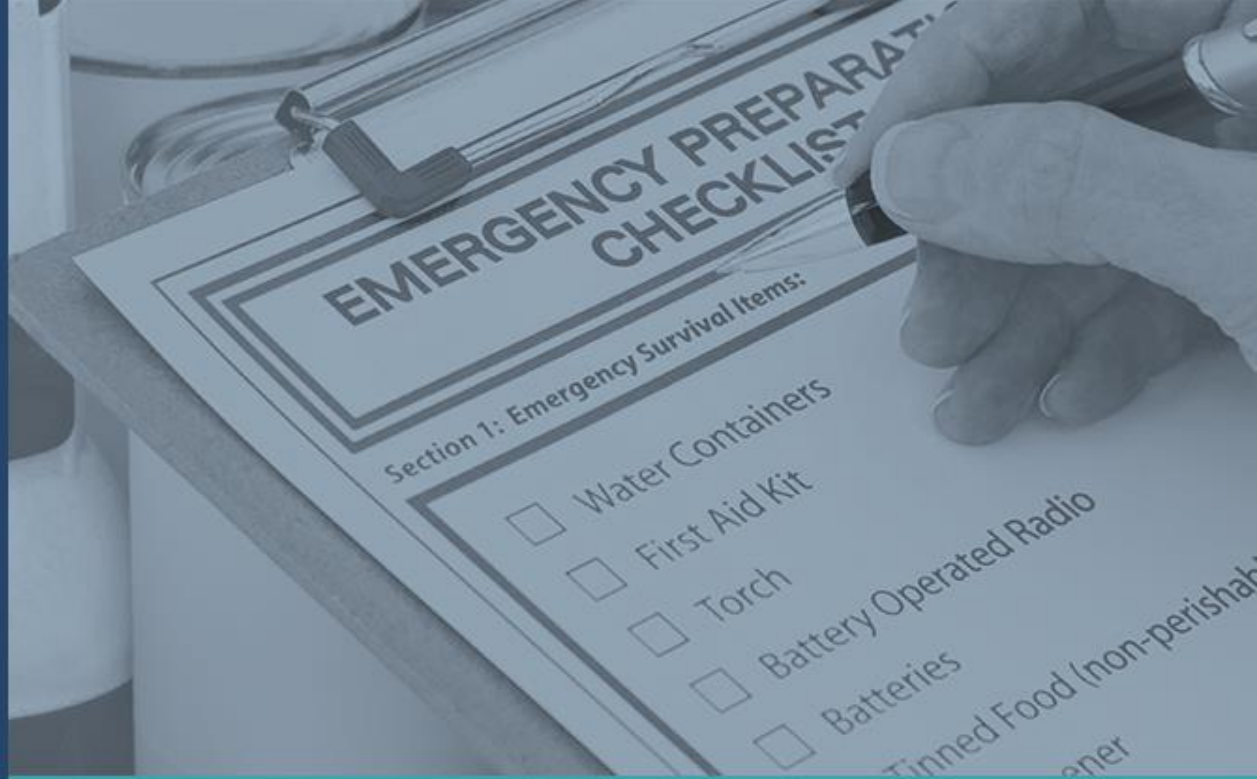




2018 Multi-City Point of Dispensing Exercise

Initial Planning Conference



Introductions



Goals for Today

- Review/Approve Exercise Objectives
- Review/Approve Exercise Timelines
- Discuss
 - Safety
 - Documentation
 - Evaluation Elements
 - POD plan information
 - Logistical Requirements
 - Identify Key Staff
 - Draft flyer Review- Maps



POD Exercise Purpose

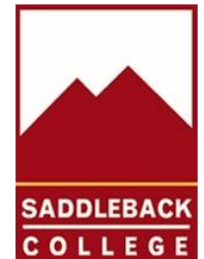
Designed to strengthen the ability to respond to a public health emergency by validating operational plans, policies and procedures; and identifying areas for improvement.



Exercise Overview

- Thursday, October 18, 2018
 - 2.0 hour operational period
 - 4:00pm – 6:00pm
- 1 Exercising Site
 - Irvine Great Park
- 6 Supporting Cities
 - Aliso Viejo, Laguna Beach, Laguna Niguel, Lake Forest, Mission Viejo, and San Clemente

Current Partners



Exercise Core Capabilities

- POD Exercise Core Capability Based Objectives
 - Emergency Operations Coordination
 - Information Sharing
 - Medical Countermeasure Dispensing
 - Medical Materiel Management and Distribution
 - Responder Health and Safety
 - Volunteer Management

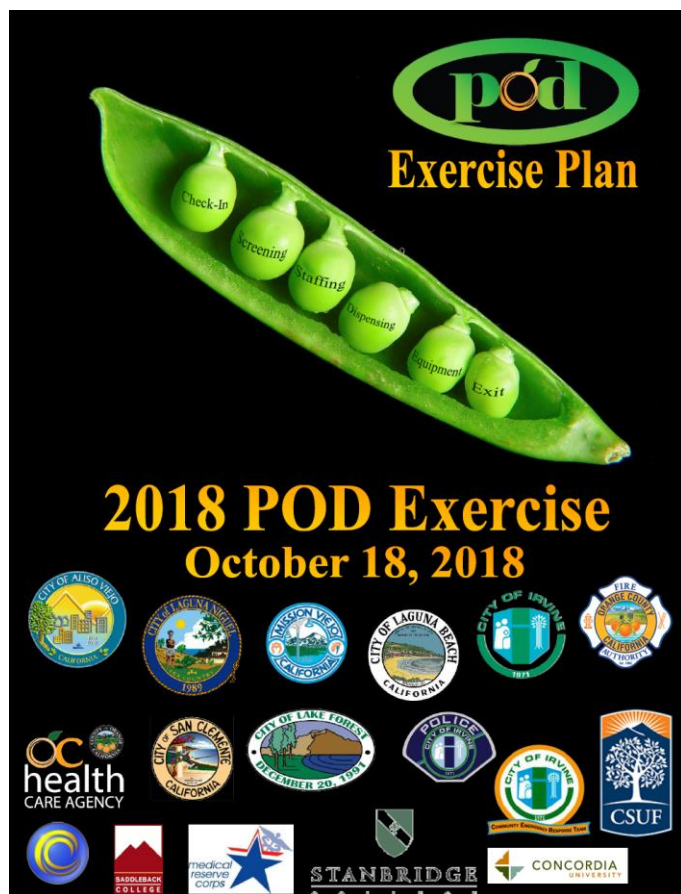


Abbreviated Exercise Timeline

Thursday, October 18, 2018

- 1100 - 1200 All Staff Registration Begins
- 1130 - 1200 POD Staff & C/Es arrive
- 1215 - 1315 General Staff Briefing, Swear In & Lunch
- 1315 - 1330 Section Briefings
- 1330 - 1530 Complete Set-up
- **1600** **Event Starts**
- **1800** **Event Ends**
- 1800 - 1830 Demobilization/Player Debrief (Hotwash)
- 1830 Check Out & Player Evaluations

ExPlan Elements



- Comments/Suggestions
- Approve – additions
 - Artificialities
 - Unique to this ex. Egress, Alert OC, site specific items and FR/Students
 - Simulators/SimCell
 - Information Sharing
 - PIO/JIC/JIS
 - Volunteer Management & Operations Coordination/ Communications – MRC

Logistical Requirements

- **Health Care Agency**
 - Medical Supplies Delivery Oct. 10, 2018
 - Emergency preparedness items
 - Dispensing Form – Multi-language
 - Exercise signage
 - Exercise - October 18, 2018
 - Food
 - Portable Toilets
- **Cities & POD Site**
 - Staff Roster
 - POD Equipment Case
 - Site Specific Signage
 - Communication Devices
 - Weather Provisions
 - VIP Coordinator & Tours



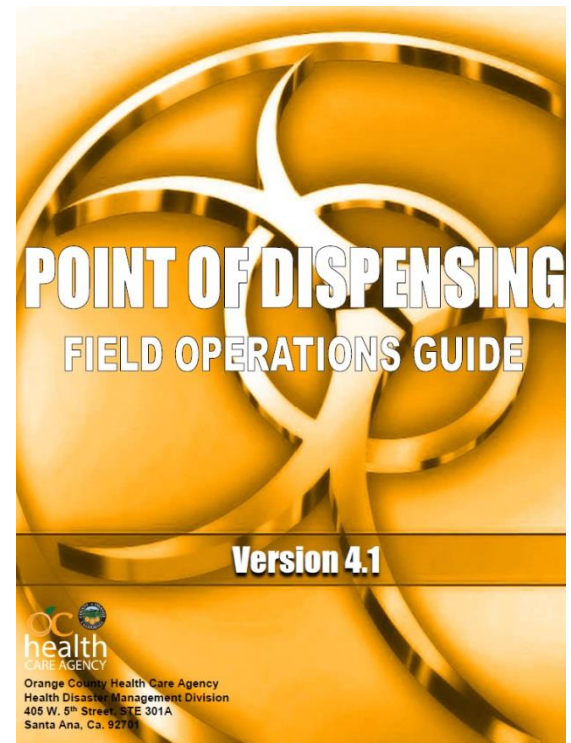
Exercise Safety

- Safety Plan and Message
 - Safety Officer/Command
- Medical Plan
 - Paramedic Unit
 - Emergency Medical Services
- Disaster Service Workers
- Exercise Control
 - Safety/Control Staff - HCA



Exercise Documentation

- Exercise Plan
- Controller/Evaluator Handbook
- Player Handbooks
- Mass Dispensing
 - POD FOG Version 4.1
 - POD IAP
 - Position Checklists
- After Action Report
 - Corrective Actions
 - Improvement Plan



2018 Exercise Specifics

- **Multi-City POD Just in time training**
- **Pill Dispensing Model**
- **PIO/JIC**
 - injects
- **Incident Command Post** – technology utilization
- **First Responder Prophylaxis** - Walk through only



2018 Exercise Specifics

- **Incentives**
 - Pumpkin - Halloween
 - City Specific emergency preparedness information on-thumb-drives
 - Multi-City POD logo tote bag
 - Other
- **Joint Information Center/System - pre-event promotion**
 - Flyers
 - PSA
 - Press release
 - Social media messaging

Local Nursing Schools Participation First Responders

- Arrive at 1430
- Instructor Registration
 - Instructor school/name(s) and list of students
- Walk Through Only



Local Nursing Schools Participation First Responders

- Instructor will identify the school and number of students at the check in (with student list) “we are first responder form _____ nursing school
- **Chain of Command**
 - Check in staff will notify Check in group supervisor →who will notify clinic branch director →who will notify Operations Chief/Health Medical →who will direct the First Responders to the Medical Consultation Group Supervisor →who will provide the Medical Consultation staff with the appropriate directions



Local Nursing Schools Participation First Responders

- First Responders will receive their “prophylaxis” in the Medical Consult area
 - Each First Responder will receive a “Quick Series” Health/Disaster Preparedness book
 - First Responder will be instructed to extend all courtesies to the general public



Evaluation Methodology

- Player Evaluations Forms
- Time Study Evaluation
- Command & General Staff Debrief
- Controller & Evaluator Feedback
 - Exercise Evaluation Guides
 - Controller & Evaluator Debrief



Best Practices

- **Staff Registration Process**
 - POD Planning check list
 - Complete registration packets/process in advance
- **Thorough/Detailed Briefings**
 - Review of safety policies
- **Site Specific Signage**
 - Create additional signage in threshold languages to meet the needs of the community
 - Create additional signage to assist with vehicular and foot traffic flow/safety
- **Observers/VIP Coordination**
 - Separate registration area, near staff registration
- **Communications Plan**
 - Identify device/channel on the organizational chart
 - Have a separate radio check out station
 - JIT training
 - Radio Check in
- **Utilize Public Information Channels**
 - Medial Tool Kit - Local TV, radio, newspaper, neighborhood mailing/event
- **Internal Processes**
 - Familiarize City/Site Leadership with ICS 213 & 214 (Unit & Message Log)
 - Coordinate/conduct internal planning meetings

2017 Exercise Improvements

- Provision of communication devices to appropriate staff
- Incomplete incident action plan – Communication Plan
- Changes to the incident action plan were not properly communicated
- Potential safety issues identified due to lack of signage
- Customize signage as needed – Font size
- Drive through area needed an additional lane to divert traffic



2016 Exercise Improvements

- Ensure perimeter signage to:
 - encourage walk by/drive by attendance,
 - secure perimeter and
 - define vehicular and foot traffic
- Provide appropriately trained traffic personnel
- Adjust site plans as needed
- Create site specific signage in threshold languages



<http://healthdisasteroc.org/prepare/pod>

- **Training Materials**
 - Web-based Training
 - Video Training
 - Training Presentations
- **Planning & Response Documents**
 - POD Field Operations Guide & Planning Documents
- **2018 POD Exercise Documentation**
 - POD Exercise Documents – ExPlan & Player Handbook
 - Dispensing form in threshold languages
 - Supply Unit Documents – Supply Tracking Forms & Vest Inserts
 - Media Toolkit – Sample Press Releases, Social Media Messaging, etc.
 - Planning Conference Documents – Agendas & Presentations
 - Controller and Evaluator Documents – Evaluation Tools



Important Dates- All Sites

- **August 21, 2018 – 09:00 to 11:00**
 - Midterm Planning Conference
 - Great Park Visitors Center
- **September 12, 2018 – 9:00 to 11:00**
 - Final Planning Conference
 - Great Park Visitors Center





Important Dates- Site Specific

- Thursday, October 11th ~ 1:30-3:30 & 3:30-5:00pm
 - Field Operations Packet Review & Site
 - Irvine Great Park– Room/location TBD
- “Medical Supply”/ Emergency Preparedness item Management and Distribution
 - Wednesday, October 10, 2018 - 09:00 - 11:00
 - Irvine Great Park – Contact information TBD
 - Arrival point TBD

Next Steps

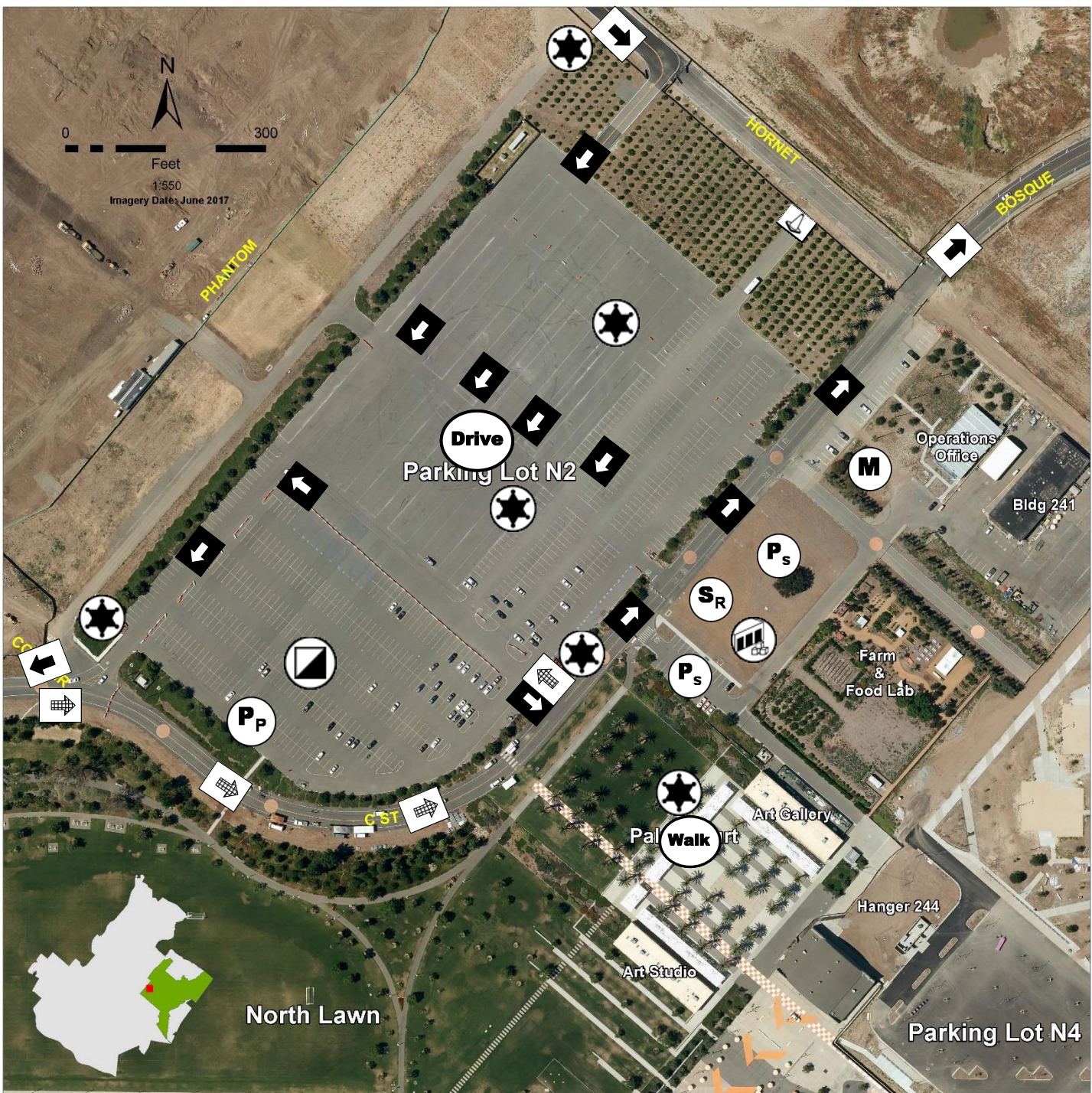
- Planning Agreement - **Cities**
- Finalize Exercise Plan – **HCA/Cities**
- POD Exercise Website Updates – **HCA**
- Nursing Student Names/Workers Comp Information – **HCA**
- Staffing Assignments - **Cities**
 - Key supervisory positions & others as identified (IPC Unit Log)
- POD Site Exercise Map Locations - **Cities**
 - General briefing/Hotwash location
 - Registration location
 - Joint Information Center
 - Medical Consult Area
- Contact Information - **Cities**
 - Deliveries



Planning Activity Log

- **Suggested Organization Chart (ICS 207)**
- **POD Exercise Locations**
 - Briefing & Hotwash Area(s)
 - Observers/VIP Check-in Area(s)
- **Equipment Number and/or Needs**
 - Portable Toilets
 - Radios
- **POD Site/Plan Review**
 - Map adjustments





0 300
Feet
1:550
Imagery Date: June 2017

PHANTOM

HORNET

BOSQUE

Drive
Parking Lot N2

Operations Office

Bldg 241

Farm & Food Lab

Art Gallery

Pal Walk Art

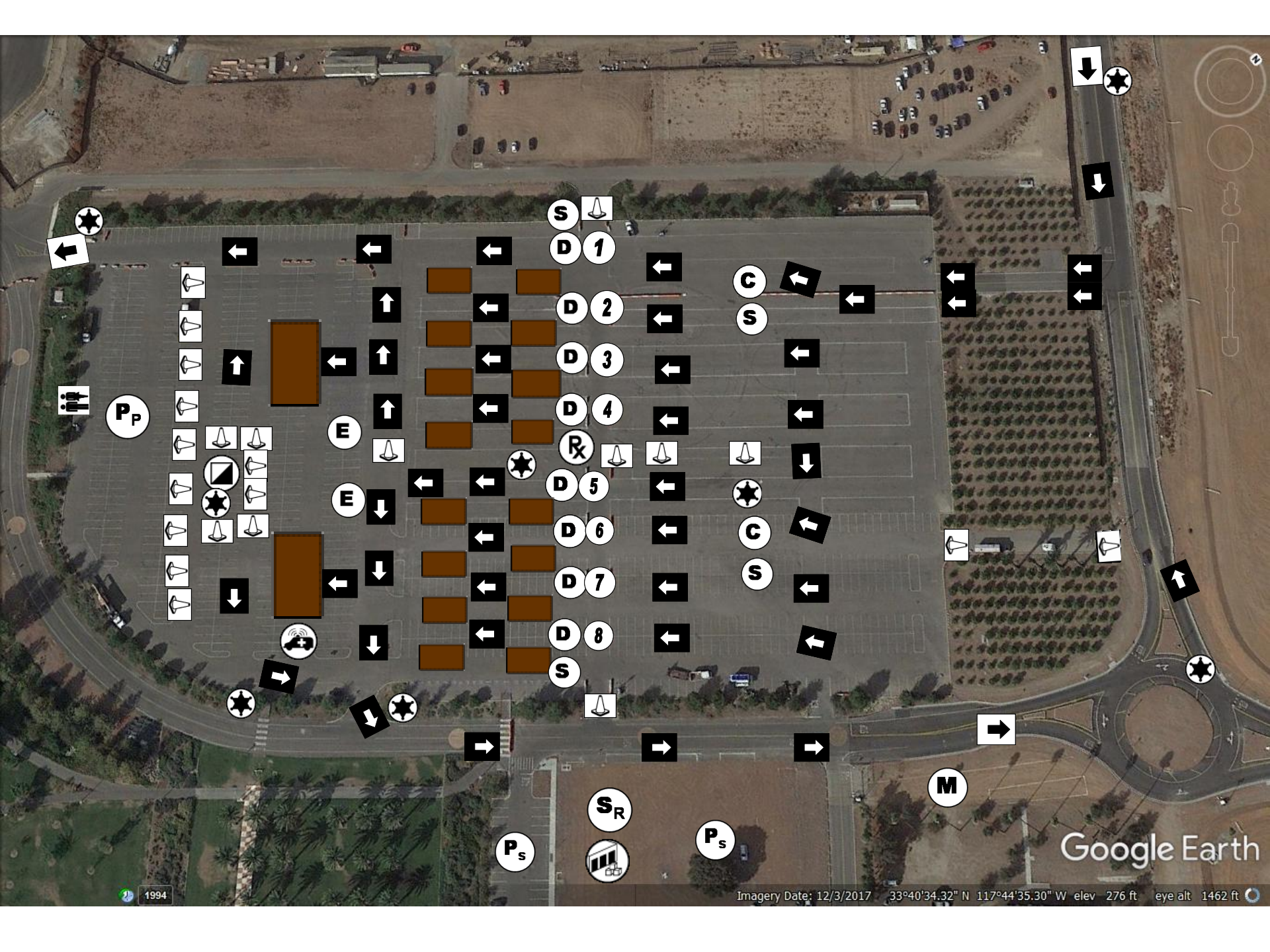
Art Studio

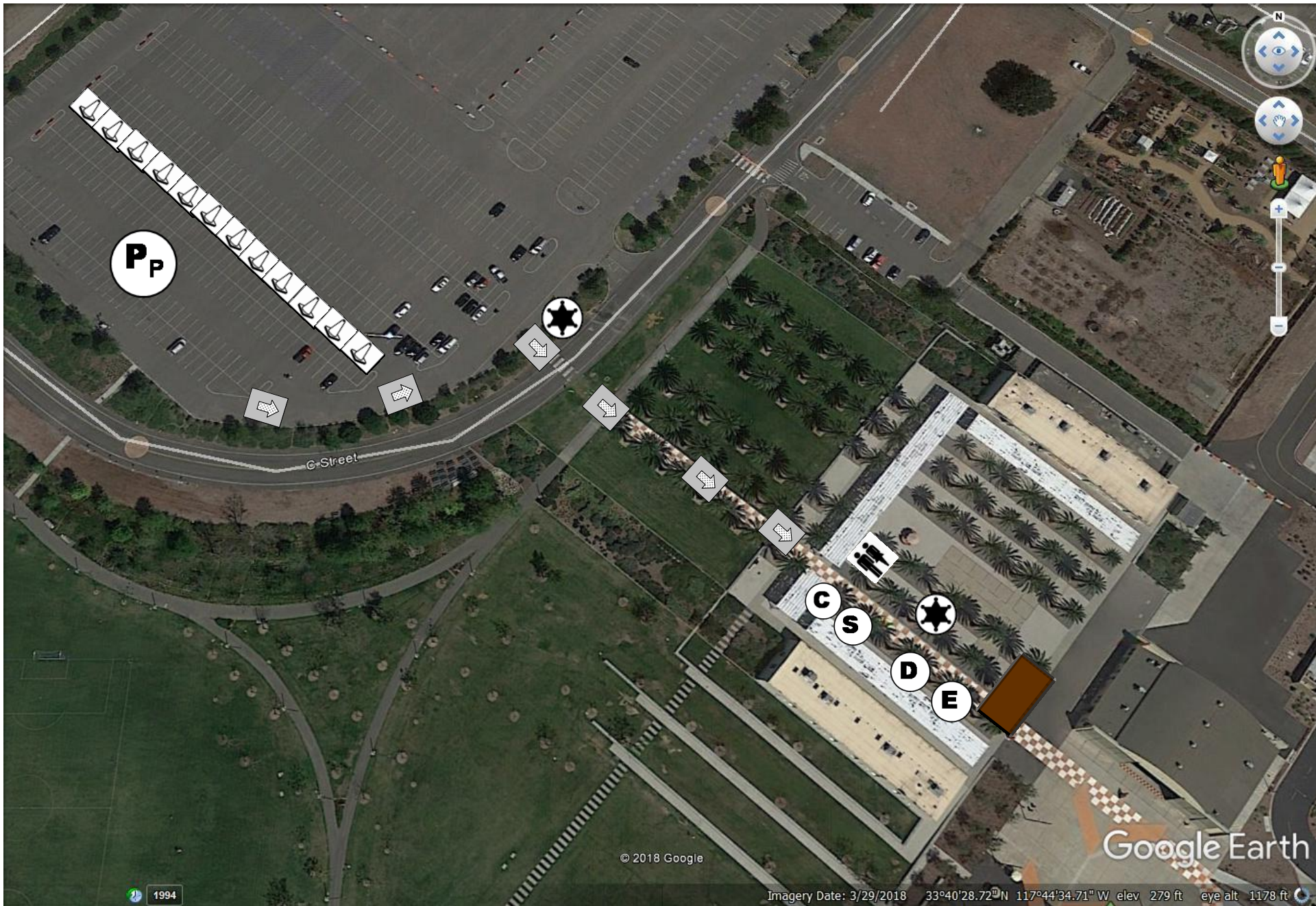
Hanger 244

Parking Lot N4

North Lawn







Pp

C-Street

C

S

D

E

© 2018 Google

Google Earth

1994

Imagery Date: 3/29/2018 33°40'28.72"N 117°44'34.71" W elev 279 ft eye alt 1178 ft

Questions?



Thank You!