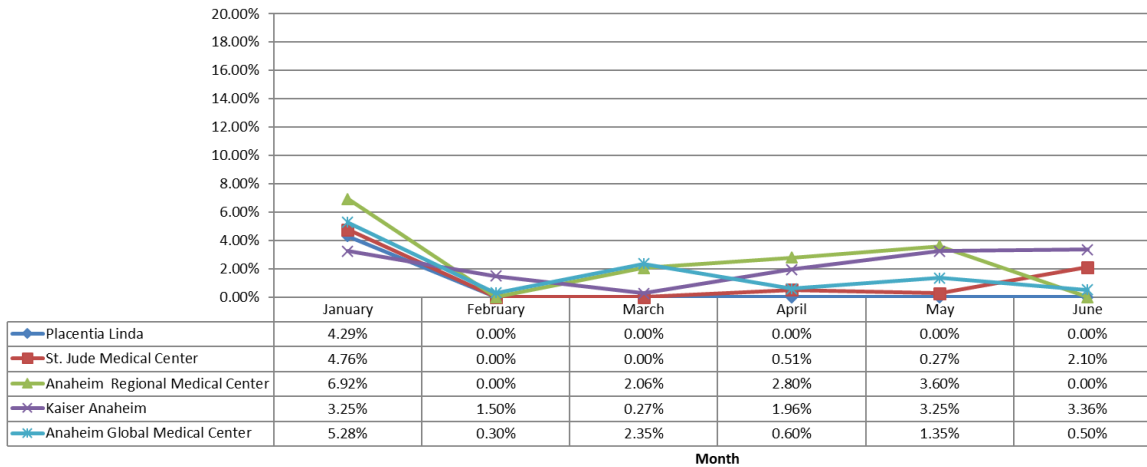




**Orange County
Emergency Medical Services
Diversion Report
January 1 to June 31, 2021**

Emergency Receiving Center Diversion- Percent of Time

North Area- 2021 - ERC Diversion



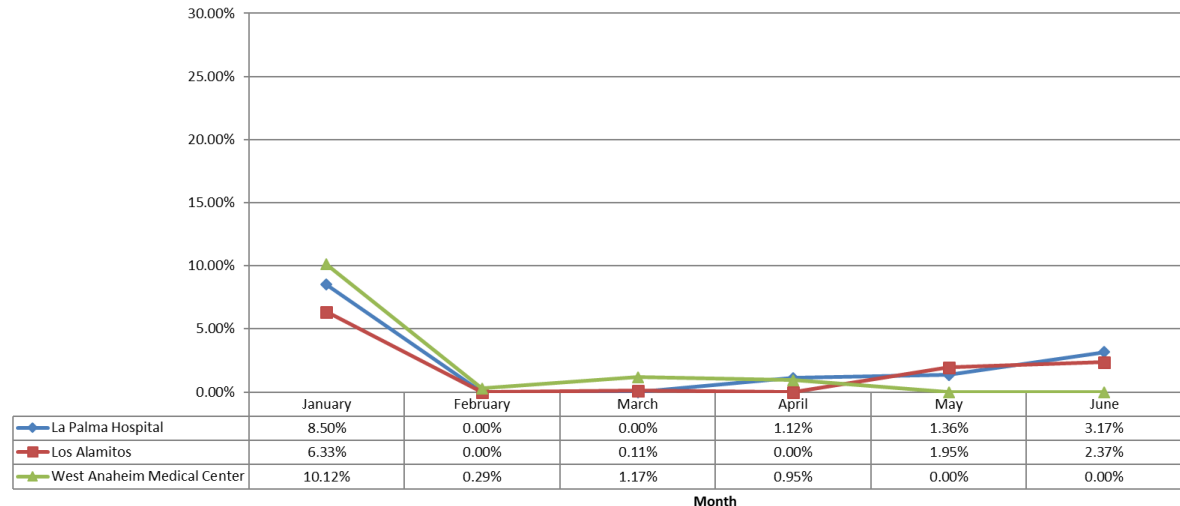
North Area Includes:

- Placentia Linda Hospital
- St. Jude Medical Center
- Anaheim Regional Medical Center
- Kaiser Anaheim
- Anaheim Global Medical Center

West Area Includes:

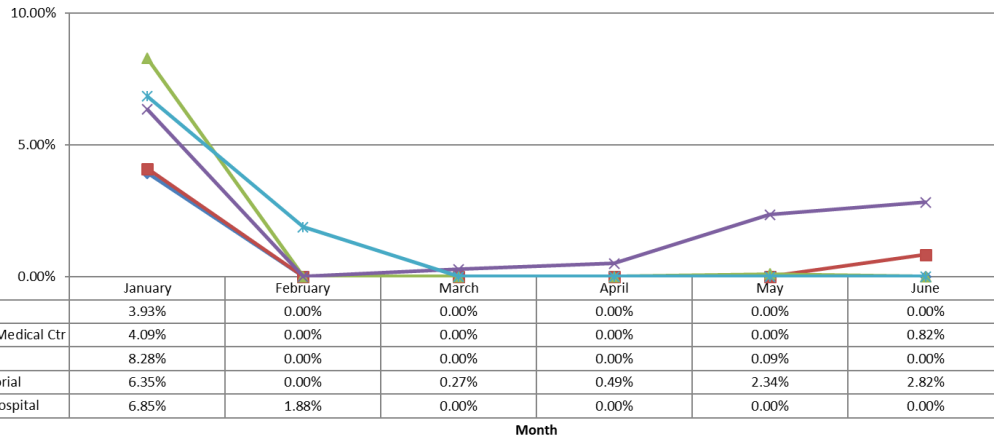
- La Palma Hospital
- Los Alamitos Medical Center
- West Anaheim Medical Center

West Area - 2021 - ERC Diversion



Emergency Receiving Center Diversion- Percent of Time

Coastal Area- 2021 - ERC Diversion



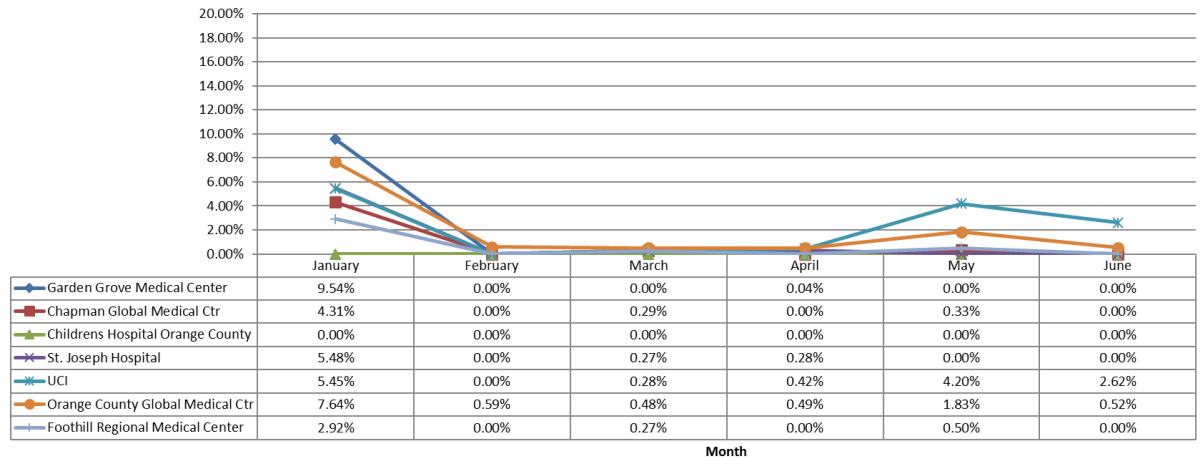
Coastal Area Includes:

- Hoag Hospital Newport Beach
- South Coastal Global Medical Center
- Fountain Valley Hospital
- Orange Coast Memorial Medical Center
- Huntington Beach Hospital

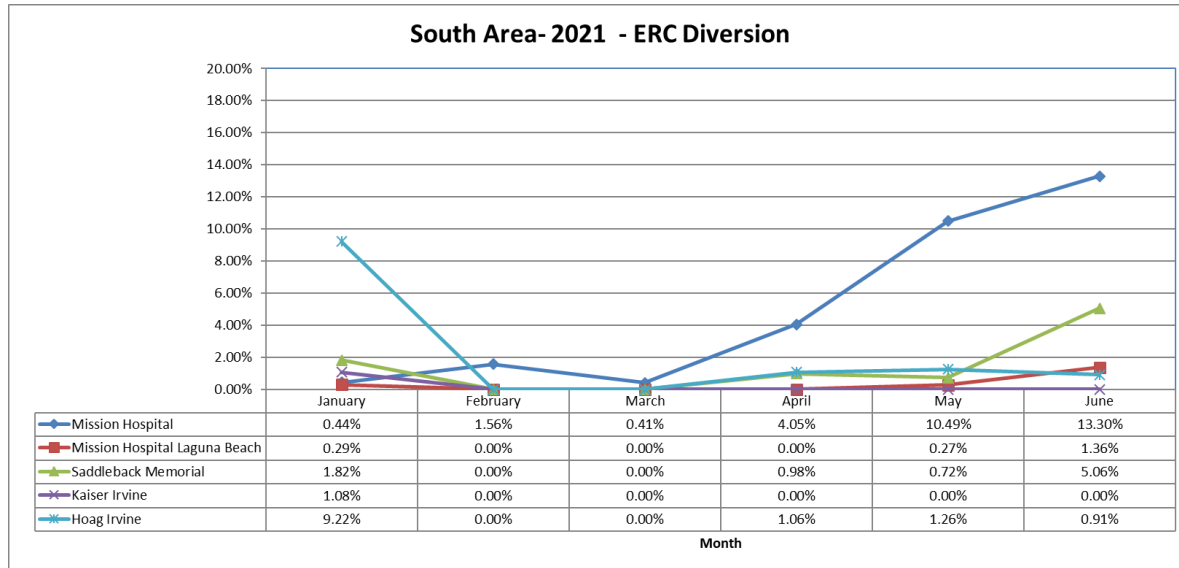
Central Area Includes:

- Garden Grove Medical Center
- Chapman Global Medical Center
- Children's Hospital Orange County
- St. Joseph Hospital
- UCI
- Orange County Global Medical Center
- Foothill Regional Medical Center

Central Area- 2021 - ERC Diversion

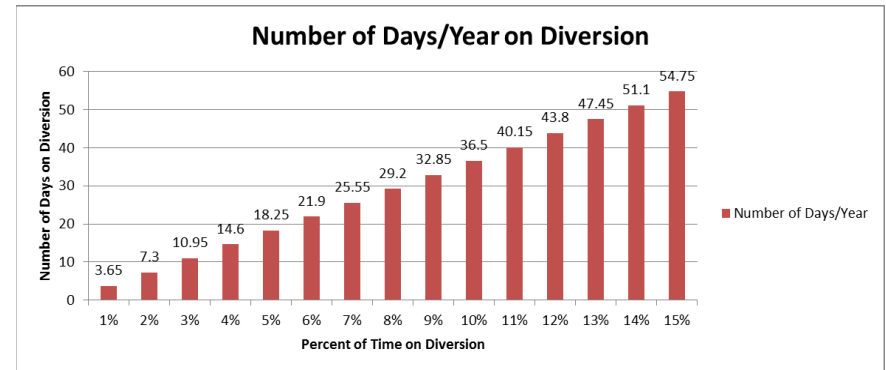
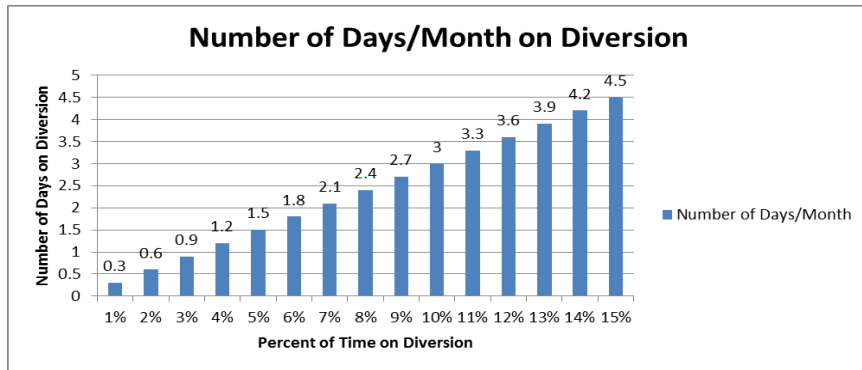


Emergency Receiving Center Diversion- Percent of Time



South Area Includes:

- Mission Hospital – Mission Viejo
- Mission Hospital – Laguna Beach
- Saddleback Memorial Medical Center
- Laguna Hills
- Kaiser Hospital – Irvine
- Hoag Hospital - Irvine



The two charts above demonstrate the monthly and annual impact of diversion represented as a total number of days an ERC would not receive patients given the percent of time of diversion.

Note: Number of days/month based on 30 days in a month

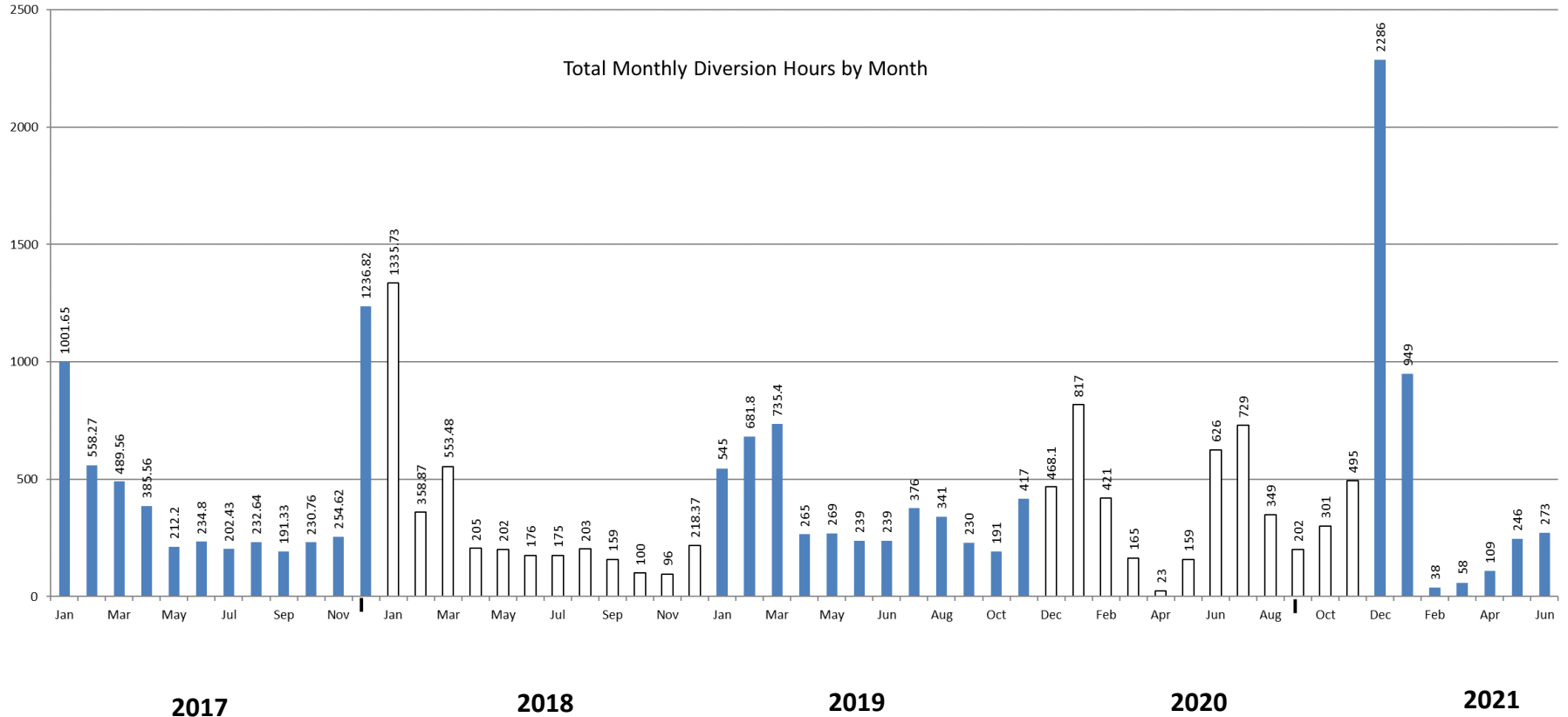
Emergency Receiving Center Diversion- Total Hours

| Emergency Receiving Center Diversion Hours 2021 | | | | | | |
|---|---------------|--------------|--------------|---------------|---------------|---------------|
| | Jan | Feb | Mar | Apr | May | Jun |
| Anaheim Global Medical Ctr | 39.00 | 2.00 | 17.00 | 4.00 | 10.00 | 3.00 |
| Anaheim Regional Med Ctr | 51.00 | 0.00 | 15.00 | 20.00 | 26.00 | 0.00 |
| Chapman Global Medical Ctr | 32.00 | 0.00 | 2.00 | 0.00 | 2.00 | 0.00 |
| CHOC | 0.00 | 0.00 | 0.00 | 0.00 | 0.00 | 0.00 |
| Foothill Regional Medical Ctr | 21.00 | 0.00 | 2.00 | 0.00 | 3.00 | 0.00 |
| Fountain Valley | 61.00 | 0.00 | 0.00 | 0.00 | 0.00 | 0.00 |
| Garden Grove Hospital | 71.00 | 0.00 | 0.00 | 0.00 | 0.00 | 0.00 |
| Hoag Hospital Irvine | 68.00 | 0.00 | 0.00 | 7.00 | 9.00 | 6.00 |
| Hoag Newport | 29.00 | 0.00 | 0.00 | 0.00 | 0.00 | 0.00 |
| Huntington Beach | 50.00 | 12.00 | 0.00 | 0.00 | 0.00 | 0.00 |
| Kaiser Anaheim | 24.00 | 10.00 | 2.00 | 14.00 | 24.00 | 24.00 |
| Kaiser Irvine | 8.00 | 0.00 | 0.00 | 0.00 | 0.00 | 0.00 |
| La Palma Intercommunity | 63.00 | 0.00 | 0.00 | 8.00 | 10.00 | 22.00 |
| Los Alamitos | 47.00 | 0.00 | 0.00 | 0.00 | 14.00 | 17.00 |
| Mission Hospital Laguna | 2.00 | 0.00 | 0.00 | 0.00 | 2.00 | 9.00 |
| Mission Hospital Mission | 3.00 | 10.00 | 3.00 | 29.00 | 78.00 | 95.00 |
| Orange Coast Memorial | 47.00 | 0.00 | 2.00 | 3.00 | 17.00 | 20.00 |
| Orange County Global Med | 56.00 | 3.00 | 3.00 | 3.00 | 13.00 | 3.00 |
| Placentia Linda Hospital | 31.00 | 0.00 | 0.00 | 0.00 | 0.00 | 0.00 |
| Saddleback Memorial | 13.00 | 0.00 | 0.00 | 7.00 | 5.00 | 36.00 |
| South Coast Global | 30.00 | 0.00 | 0.00 | 0.00 | 0.00 | 5.00 |
| St Joseph | 40.00 | 0.00 | 2.00 | 2.00 | 0.00 | 0.00 |
| St. Jude Medical Ctr | 35.00 | 0.00 | 0.00 | 3.00 | 2.00 | 15.00 |
| UCI | 40.00 | 0.00 | 2.00 | 3.00 | 31.00 | 18.00 |
| West Anaheim Medical Ctr | 75.00 | 1.00 | 8.00 | 6.00 | 0.00 | 0.00 |
| Total | 936.00 | 38.00 | 58.00 | 109.00 | 246.00 | 273.00 |

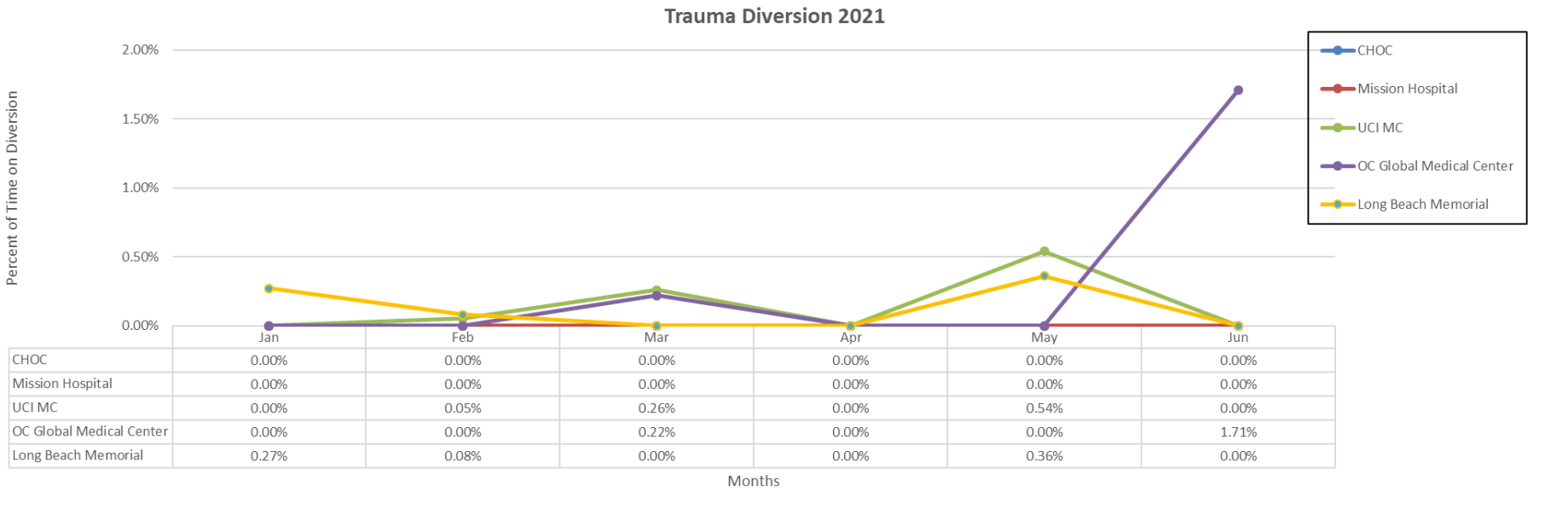


** Highlighted in Red=Diversion >6%

Emergency Receiving Center Diversion 2017 - 2021



Trauma Receiving Center Diversion- Percent of Time



Cardiovascular Receiving Center Diversion- Percent of Time

| CVRC 2021 | | | | | | |
|------------------------------|-------|-------|-------|-------|--------|-------|
| | Jan | Feb | Mar | Apr | May | Jun |
| Anaheim Global Medical Ctr | 0.00% | 0.00% | 0.00% | 0.58% | 1.79% | 1.47% |
| Anaheim Regional Medical Ctr | 0.00% | 0.00% | 0.00% | 0.00% | 0.00% | 0.00% |
| Fountain Valley | 0.00% | 0.00% | 0.00% | 0.00% | 0.00% | 0.00% |
| Hoag Hospital Irvine | 0.00% | 0.00% | 0.00% | 0.00% | 0.00% | 0.00% |
| Hoag Hospital Newport | 0.00% | 0.00% | 0.00% | 0.00% | 0.00% | 0.00% |
| Los Alamitos | 0.00% | 0.00% | 0.00% | 0.00% | 0.00% | 0.00% |
| Orange Coast Memorial Med | 0.00% | 0.00% | 0.00% | 0.93% | 0.20% | 0.00% |
| Orange County Global Med | 0.14% | 0.08% | 0.00% | 0.00% | 0.00% | 0.00% |
| Mission Hospital | 0.00% | 0.00% | 0.00% | 0.00% | 0.00% | 0.00% |
| Saddleback Memorial | 0.00% | 0.00% | 0.00% | 0.00% | 0.04% | 0.00% |
| St Joseph | 0.00% | 0.00% | 0.00% | 0.00% | 0.00% | 0.00% |
| St Jude | 0.00% | 0.00% | 0.00% | 0.00% | 0.00% | 0.00% |
| UCI | 0.00% | 0.00% | 0.00% | 0.00% | 0.00% | 0.00% |
| West Anaheim Medical Ctr | 0.55% | 5.91% | 3.16% | 2.66% | 17.91% | 3.88% |

Highlighted in Red =Diversion Any Amount



Internal Disruption Diversion- Percent of Time

| INTERNAL DISRUPTION 2021 | | | | | | |
|-------------------------------|-------|-------|-------|-------|-------|-------|
| | Jan | Feb | Mar | Apr | May | Jun |
| Anaheim Global Medical Ctr | 0.00% | 0.00% | 0.00% | 0.00% | 0.19% | 0.00% |
| Anaheim Regional Med Ctr | 0.00% | 0.00% | 0.00% | 0.00% | 0.00% | 0.00% |
| Chapman Global Medical Ctr | 0.00% | 0.00% | 0.00% | 0.00% | 1.90% | 0.00% |
| CHOC | 0.00% | 0.00% | 0.00% | 0.00% | 0.00% | 0.00% |
| Foothill Regional Medical Ctr | 0.00% | 0.00% | 0.00% | 0.00% | 0.00% | 0.00% |
| Fountain Valley | 0.00% | 0.00% | 0.00% | 0.00% | 0.00% | 0.00% |
| Garden Grove Hospital | 0.00% | 0.00% | 0.00% | 0.00% | 0.00% | 0.00% |
| Hoag Hospital Irvine | 0.00% | 0.00% | 0.00% | 0.00% | 0.00% | 0.00% |
| Hoag Newport | 0.00% | 0.00% | 0.00% | 0.00% | 0.00% | 0.28% |
| Huntington Beach | 0.00% | 0.00% | 0.00% | 0.00% | 0.00% | 0.00% |
| Kaiser Anaheim | 0.00% | 0.00% | 0.00% | 0.00% | 0.00% | 0.00% |
| Kaiser Irvine | 0.00% | 0.00% | 0.00% | 0.00% | 0.00% | 0.00% |
| La Palma Intercommunity | 0.00% | 0.00% | 0.00% | 0.00% | 0.00% | 0.00% |
| Los Alamitos | 0.19% | 0.00% | 0.00% | 0.00% | 0.00% | 0.00% |
| Mission Hospital Laguna | 0.31% | 0.00% | 0.68% | 0.00% | 0.00% | 0.00% |
| Mission Hospital Mission | 0.00% | 0.00% | 0.00% | 0.00% | 0.00% | 0.00% |
| Orange Coast Memorial | 0.00% | 0.00% | 0.00% | 0.00% | 0.00% | 0.00% |
| Orange County Global Med | 0.00% | 0.00% | 0.00% | 0.00% | 0.00% | 0.30% |
| Placentia Linda Hospital | 0.00% | 0.00% | 0.00% | 0.00% | 0.00% | 0.00% |
| Saddleback Memorial | 0.00% | 0.00% | 0.00% | 0.00% | 0.00% | 0.00% |
| South Coast Global | 0.00% | 0.00% | 0.00% | 0.00% | 0.00% | 0.00% |
| St Joseph | 0.00% | 0.00% | 0.00% | 0.00% | 0.00% | 0.00% |
| St. Jude Medical Ctr | 0.00% | 0.00% | 0.00% | 0.00% | 0.00% | 0.00% |
| UCI | 0.00% | 0.00% | 0.00% | 0.00% | 0.00% | 0.00% |
| West Anaheim Medical Ctr | 0.00% | 0.00% | 0.00% | 0.00% | 0.00% | 0.00% |



Highlighted in Red = Diversion Any Amount

CT Diversion Report- Percent of Time

| CT Diversion 2021 | | | | | | |
|-------------------------------|-------|-------|-------|-------|--------|--------|
| | Jan | Feb | Mar | Apr | May | Jun |
| Anaheim Global Medical Ctr | 0.00% | 0.37% | 3.90% | 2.62% | 12.33% | 0.00% |
| Anaheim Regional Med Ctr | 0.54% | 0.00% | 1.19% | 0.33% | 2.94% | 2.11% |
| Chapman Global Medical Ctr | 0.00% | 0.00% | 0.00% | 0.69% | 0.00% | 0.00% |
| CHOC | 0.00% | 0.00% | 0.00% | 0.00% | 0.00% | 0.00% |
| Foothill Regional Medical Ctr | 0.00% | 0.00% | 0.00% | 1.37% | 0.00% | 0.29% |
| Fountain Valley | 0.00% | 0.00% | 0.00% | 0.00% | 0.00% | 0.00% |
| Garden Grove Hospital | 0.00% | 0.00% | 0.00% | 0.00% | 0.00% | 0.00% |
| Hoag Hospital Irvine | 0.00% | 0.00% | 0.00% | 0.23% | 0.00% | 0.00% |
| Hoag Newport | 0.00% | 0.00% | 0.00% | 0.00% | 0.00% | 0.00% |
| Huntington Beach | 0.00% | 0.00% | 0.52% | 0.00% | 0.00% | 0.01% |
| Kaiser Anaheim | 0.00% | 0.00% | 0.00% | 0.00% | 0.30% | 0.00% |
| Kaiser Irvine | 0.00% | 0.00% | 0.00% | 0.00% | 0.00% | 0.00% |
| La Palma Intercommunity | 0.00% | 0.00% | 0.00% | 0.00% | 0.00% | 1.16% |
| Los Alamitos | 0.00% | 0.00% | 0.00% | 0.00% | 0.50% | 0.19% |
| Mission Hospital Laguna | 0.30% | 0.00% | 0.00% | 0.00% | 0.00% | 0.00% |
| Mission Hospital Mission | 0.00% | 0.00% | 0.00% | 0.00% | 0.00% | 0.00% |
| Orange Coast Memorial | 0.00% | 0.00% | 0.00% | 0.00% | 0.14% | 0.00% |
| Orange County Global Med | 0.05% | 0.00% | 0.00% | 0.00% | 0.00% | 0.93% |
| Placentia Linda Hospital | 0.00% | 0.00% | 0.00% | 0.00% | 0.00% | 0.00% |
| Saddleback Memorial | 0.00% | 0.00% | 0.00% | 0.12% | 0.04% | 0.00% |
| South Coast Global | 0.00% | 0.00% | 1.45% | 0.24% | 0.00% | 12.36% |
| St Joseph | 0.00% | 0.00% | 1.09% | 0.00% | 0.00% | 0.00% |
| St. Jude Medical Ctr | 0.00% | 0.00% | 0.00% | 0.00% | 0.00% | 0.00% |
| UCI | 0.00% | 0.00% | 0.00% | 0.00% | 0.00% | 0.00% |
| West Anaheim Medical Ctr | 0.85% | 0.38% | 0.00% | 0.00% | 0.00% | 0.10% |



Highlighted in Red =Diversion Any Amount

Neuro Diversion Report- Percent of Time

| Neuro Diversion 2021 | | | | | | |
|-------------------------------|-------|-------|-------|-------|-------|-------|
| | Jan | Feb | Mar | Apr | May | Jun |
| Anaheim Global Medical Ctr | 0.00% | 0.00% | 0.00% | 0.00% | 0.00% | 0.00% |
| Anaheim Regional Med Ctr | 0.00% | 0.00% | 0.00% | 0.00% | 0.00% | 0.00% |
| Chapman Global Medical Ctr | 0.00% | 0.00% | 0.00% | 0.00% | 0.00% | 0.00% |
| CHOC | 0.00% | 0.00% | 0.00% | 0.00% | 0.00% | 0.00% |
| Foothill Regional Medical Ctr | 0.00% | 0.00% | 0.00% | 0.00% | 0.00% | 0.00% |
| Fountain Valley | 0.00% | 0.00% | 0.00% | 0.00% | 0.00% | 0.06% |
| Garden Grove Hospital | 0.00% | 0.00% | 0.00% | 0.00% | 0.00% | 0.00% |
| Hoag Hospital Irvine | 0.00% | 0.00% | 0.00% | 0.00% | 0.00% | 0.00% |
| Hoag Newport | 0.00% | 0.00% | 0.00% | 0.00% | 0.00% | 0.00% |
| Huntington Beach | 0.00% | 0.00% | 0.00% | 0.00% | 0.00% | 0.00% |
| Kaiser Anaheim | 0.00% | 0.00% | 0.00% | 0.00% | 0.00% | 0.00% |
| Kaiser Irvine | 0.00% | 0.00% | 0.00% | 0.00% | 0.00% | 0.00% |
| La Palma Intercommunity | 0.00% | 0.00% | 0.00% | 0.00% | 0.00% | 0.00% |
| Los Alamitos | 0.00% | 0.00% | 0.00% | 0.00% | 0.36% | 0.59% |
| Mission Hospital Laguna | 0.00% | 0.00% | 0.00% | 0.00% | 0.00% | 0.00% |
| Mission Hospital Mission | 0.00% | 0.00% | 0.00% | 0.00% | 1.59% | 0.90% |
| Orange Coast Memorial | 0.00% | 0.00% | 0.00% | 0.00% | 0.00% | 0.00% |
| Orange County Global Med | 0.00% | 0.00% | 0.00% | 0.00% | 0.00% | 0.17% |
| Placentia Linda Hospital | 0.00% | 0.00% | 0.00% | 0.00% | 0.00% | 0.00% |
| Saddleback Memorial | 0.00% | 0.00% | 0.00% | 0.00% | 3.36% | 0.97% |
| South Coast Global | 0.00% | 0.00% | 0.00% | 0.00% | 0.00% | 0.00% |
| St Joseph | 0.00% | 0.00% | 0.00% | 0.00% | 0.00% | 0.00% |
| St. Jude Medical Ctr | 0.00% | 0.00% | 0.00% | 0.00% | 0.00% | 0.00% |
| UCI | 0.00% | 0.00% | 0.00% | 0.00% | 0.00% | 0.00% |
| West Anaheim Medical Ctr | 0.00% | 0.00% | 0.00% | 0.00% | 0.00% | 0.00% |



Highlighted in Red =Diversion Any Amount