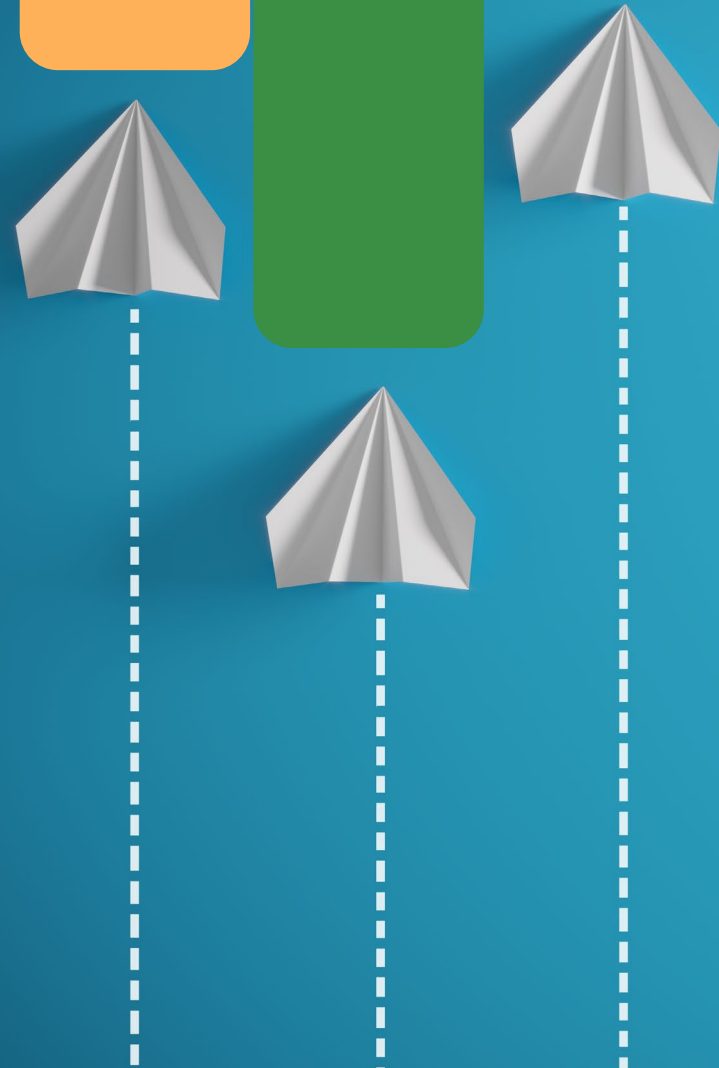


Program Improvements for Valued Outpatient Treatment (PIVOT)



PIVOT Innovation Project Description

Primary Problem

- Behavioral Health Transformation initiatives, including BHSA, will require changes in behavioral health operations and programs.
- Several areas within the system of care require administrative and/or program changes to improve access to and quality of services.

Response to Need

Create an overarching proposal that:

- Identifies successful strategies and administrative changes needed to prepare for the transition to BHSA and share lessons learned.
- Proposes innovative strategies to address local areas of need identified through stakeholder feedback.
- Offers counties with similar challenges the opportunity to participate in PIVOT components that best align with their local needs.

PIVOT

1

Full-Service Partnership Reboot

Establish the local administrative processes and data infrastructure needed to prepare the county for changes to FSP programs under BHSA.

2

Integrated Complex Care Management for Older Adults

Develop a system of care for older adults living with co-occurring mental health and neurocognitive conditions, who may also be homeless or at risk of homelessness.

3

Developing Capacity for Specialty MH Plan Services with Diverse Communities

Identify the minimum capacity of a community-based organization to be able to become a specialty mental health plan/DMC-ODS contracted provider.

4

Innovative Countywide Workforce Initiatives

Explore an alternative strategy to build a culturally competent and well-trained behavioral health workforce of professionals and paraprofessionals.

5

Innovative Approaches to Delivery of Care

Identify a more culturally responsive, inclusive and efficient delivery of care, utilizing a User Experience model to gather input from consumers and their family members.

Older Adult Component Overview



Primary Problem

Older adults are the fastest growing population in OC. Long-term stable housing, treatment and services are often inaccessible, inadequate, or unavailable to older adults who are homeless or at risk of homelessness and living with dual mental health conditions and dementia.

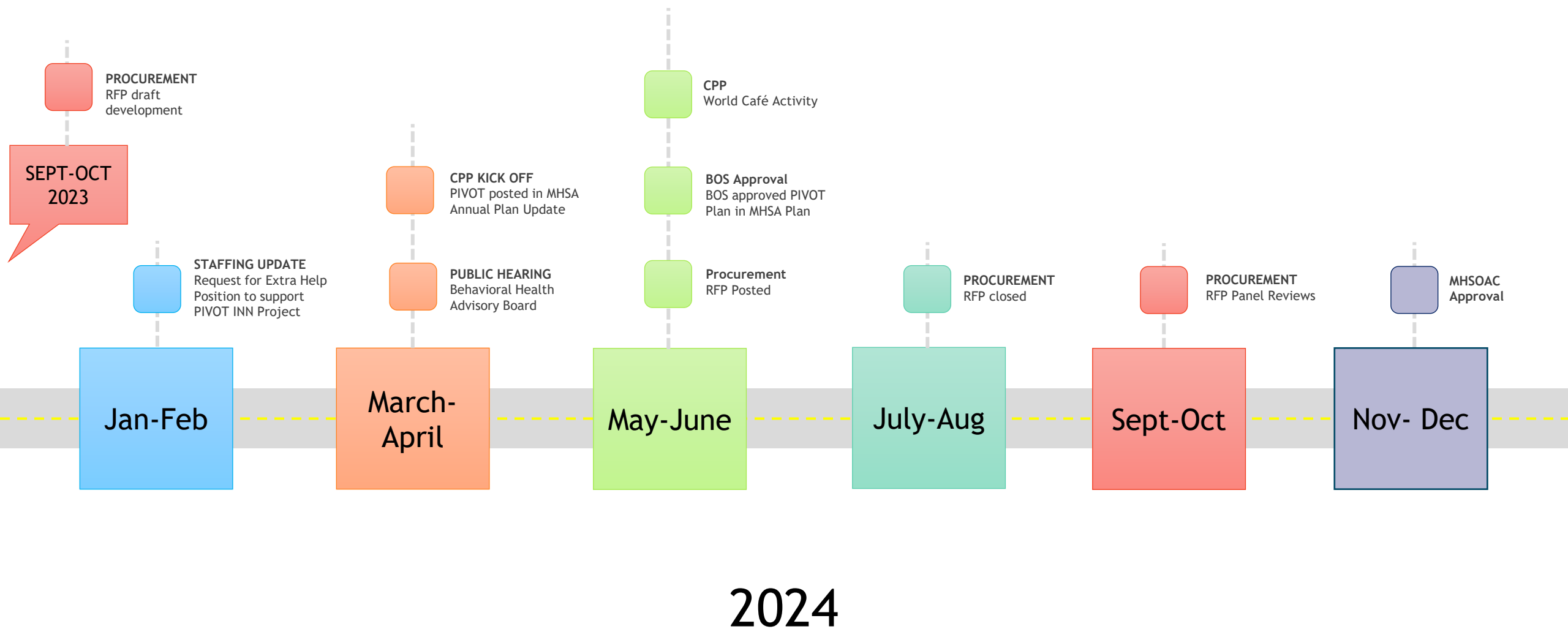
Innovative Component

Plan for a system of care that can serve this specific group of older adults, utilizing an integrated and collaborative approach.

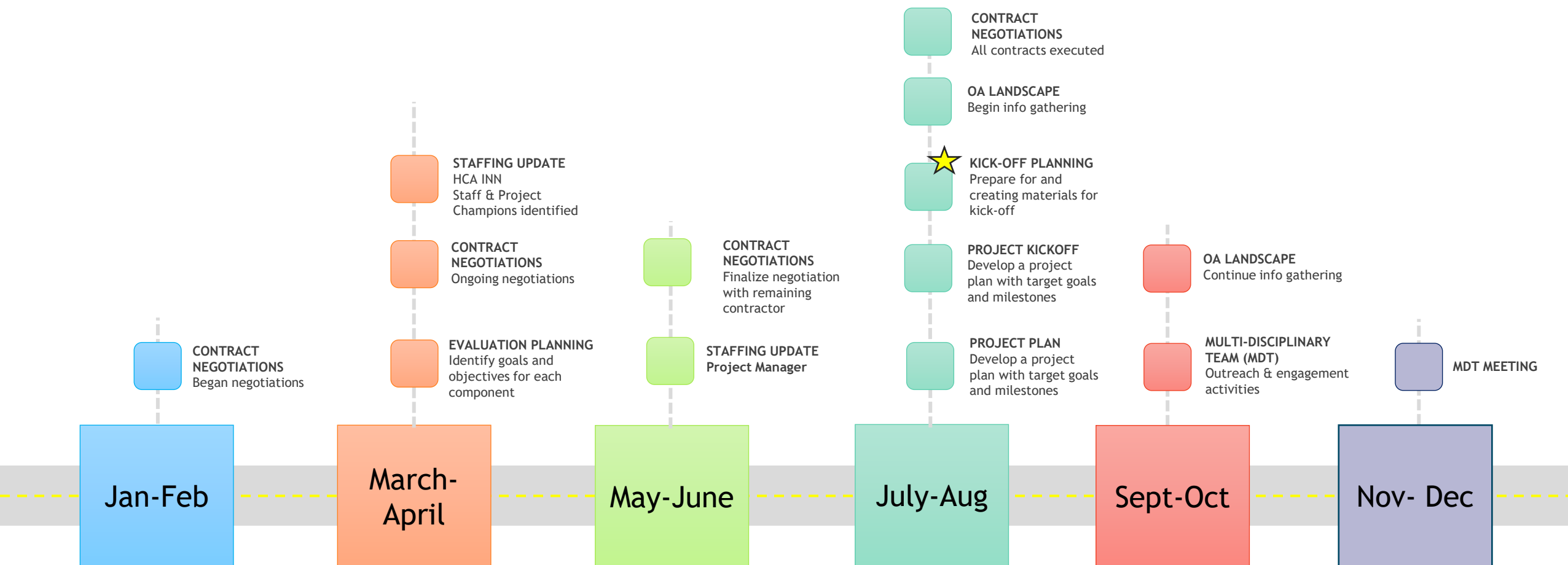
Proposed Activities

- **Identify and engage a multidisciplinary team of experts** who serve older adults across the continuum of care to inform the development of a holistic and comprehensive system of care for this target population
- **Create a process for identifying target population**, considering the challenges and barriers reaching and engaging this unserved/underserved population
- **Inform and educate providers** on best practices in serving older adults living with co-occurring mental health conditions and neurocognitive disorders
- Engage experts in the field to **identify a model for assessment** that is recognized across the various systems.
- Identify a **multi-disciplinary complex care/navigation** approach, exploring blended funding and housing options

Timeline: Start-up Activities

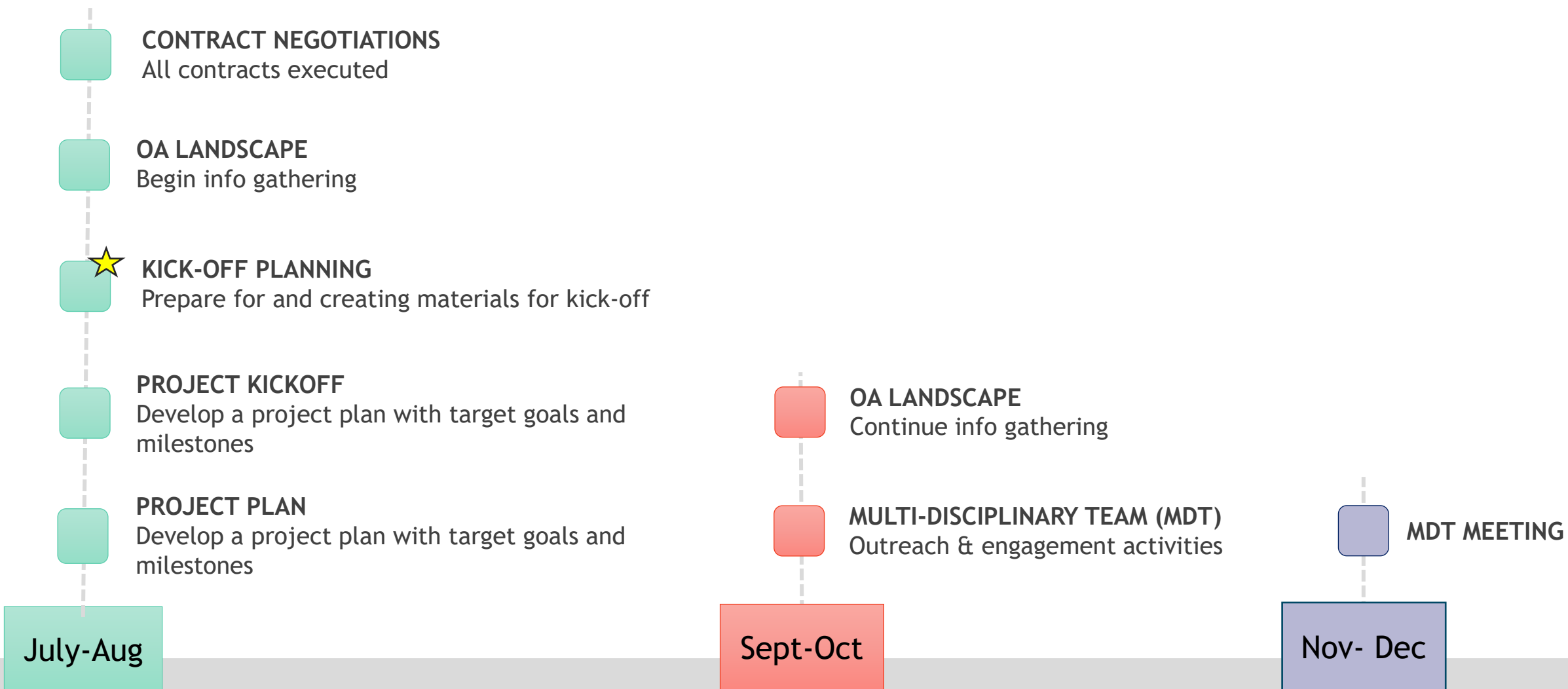


Timeline: Current Status & Next Steps



2025

Timeline: Current Status & Next Steps



2025

Questions?